



## **Australian Rail Track Corporation**

### **Maitland to Minimbah Third Track Project**

#### **Submissions Report including Preferred Project Report**

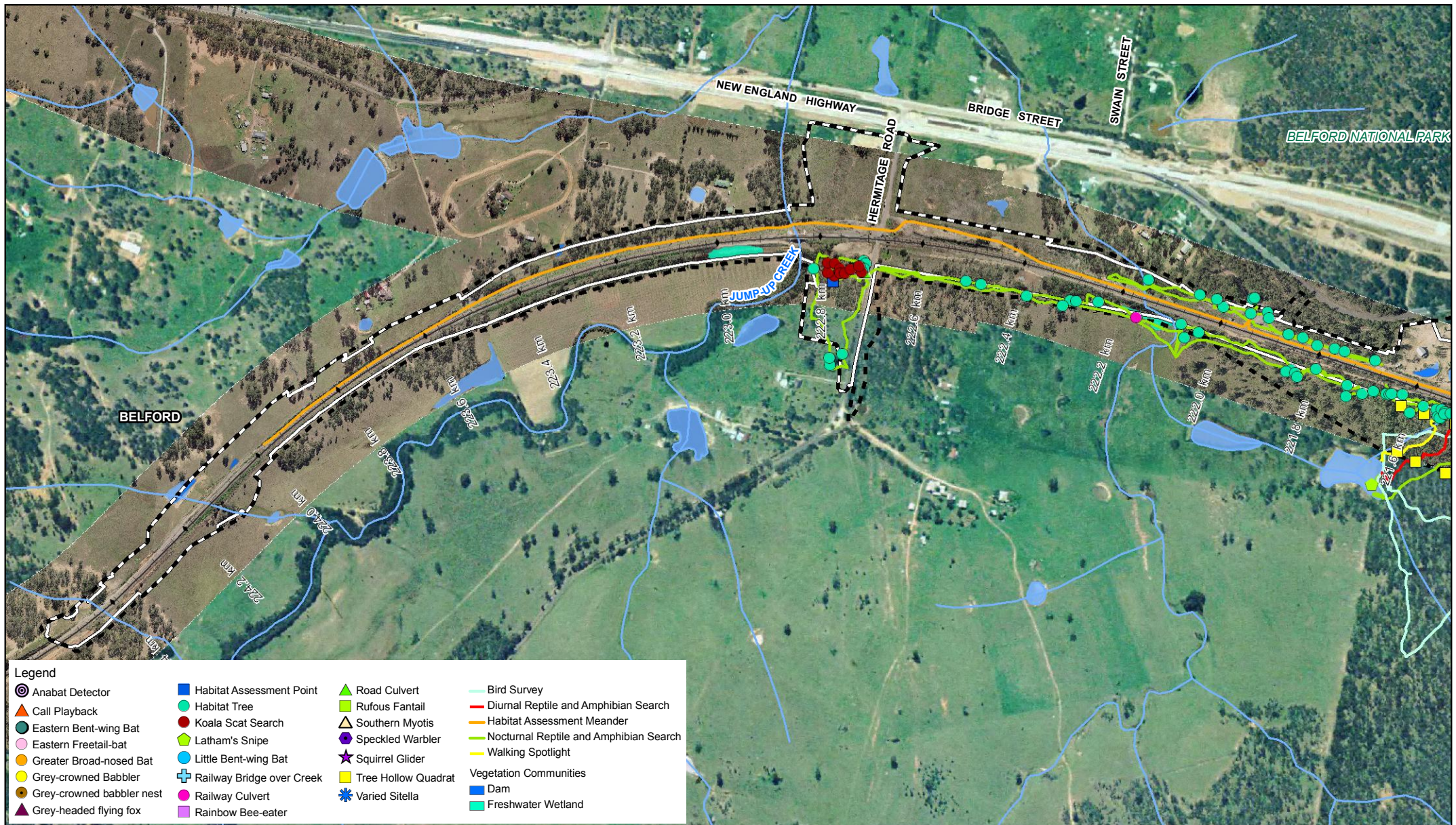
September 2010

H8R-REP-S2G-ENV-0019-0

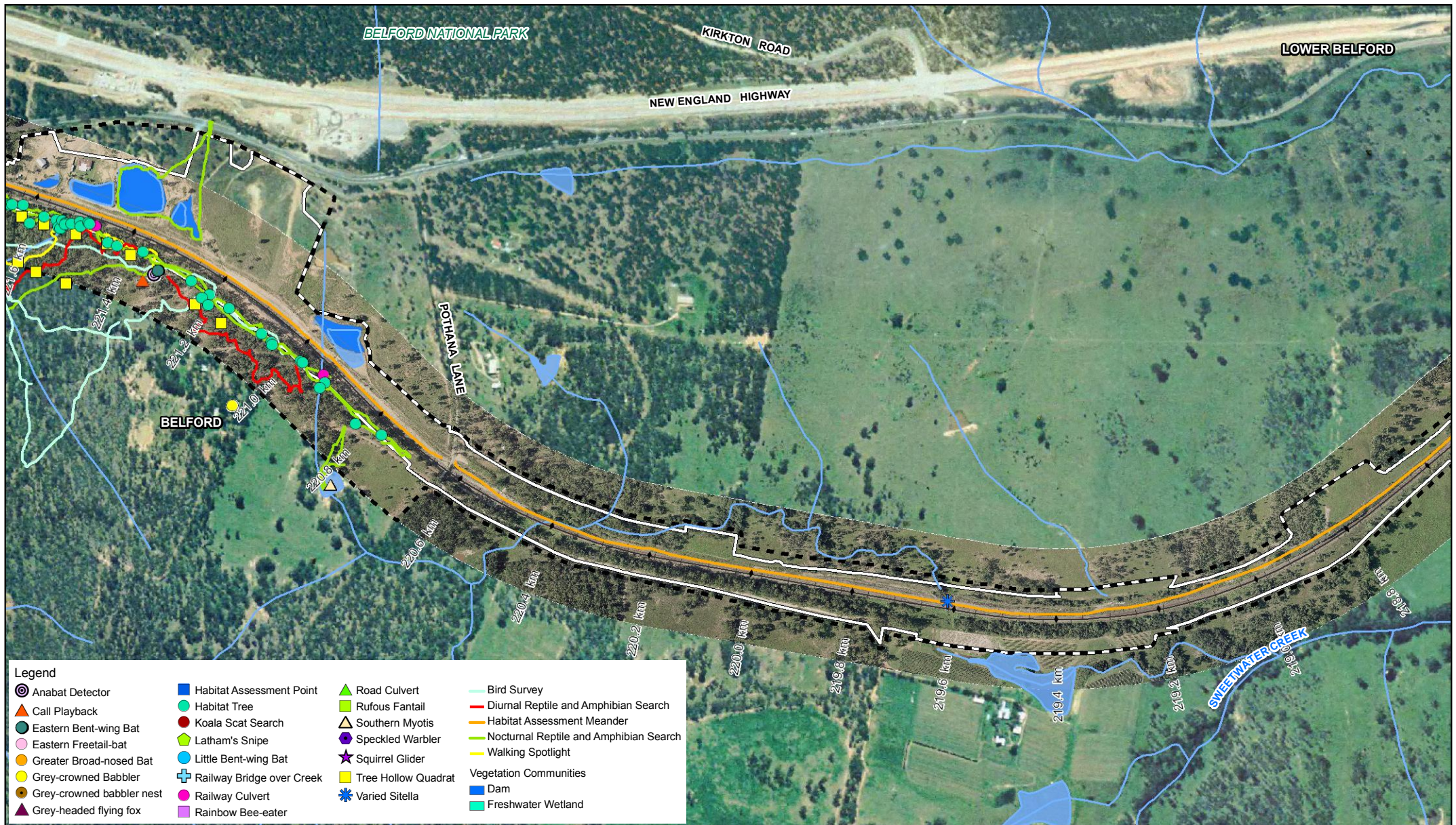


## Part C Preferred Project

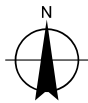




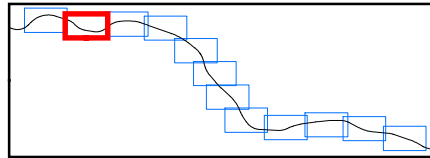




1:10,000 (at A4)  
0 35 70 140 210 280  
Metres  
Map Projection: Transverse Mercator  
Horizontal Datum: Australian Geodetic Datum 1966  
Grid: Integrated Survey Grid, Zone 56-1



**LEGEND**  
 ■ Revised Investigation Area  
 + Existing Railway  
 ■ Revised Construction  
 ■ Impact Zone  
 — Watercourse  
 ■ Watercourse Area



Maitland to Minimbah Third Track  
Submissions Report

Job Number | 22-14471  
Revision | A  
Date | August 2010

Survey Effort and  
Threatened Species Location

Figure 6.2b

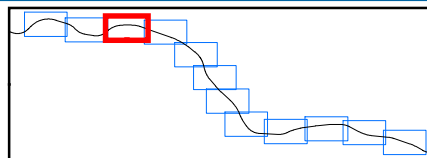
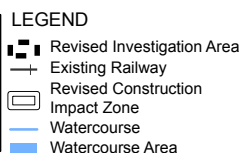
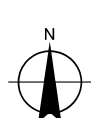
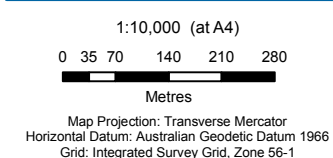
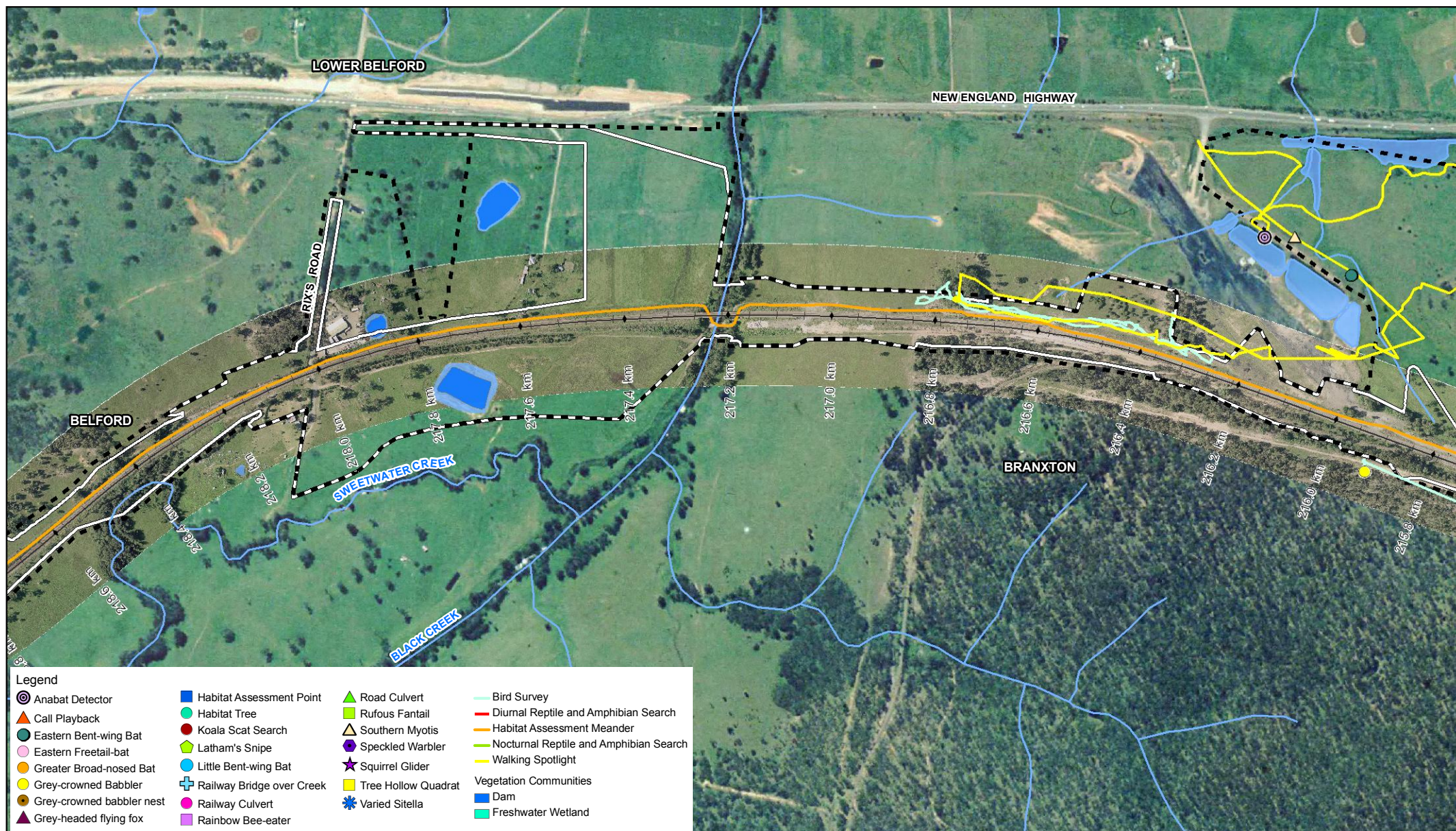
G:\22\14471\GIS\Maps\Deliverables\PPR\PPR\_Fauna\_Threat\_Species\_20100712.mxd

© 2009. While GHD has taken care to ensure the accuracy of this product, GHD and DEPARTMENT OF LANDS, FUGRO, ECOTONE ECOLOGICAL CONSULTANTS PTY LTD make no representations or warranties about its accuracy, completeness or suitability for any particular purpose. GHD and DEPARTMENT OF LANDS, FUGRO, ECOTONE ECOLOGICAL CONSULTANTS PTY LTD cannot accept liability of any kind (whether in contract, tort or otherwise) for any expenses, losses, damages and/or costs (including indirect or consequential damage) which are or may be incurred as a result of the product being inaccurate, incomplete or unsuitable in any way and for any reason.

Data Source: Department of Lands: Aerial - 2005; Fugro: Aerial - 2008; Ecotone Ecological Consultants Pty Ltd: Fauna Mapping Data - 2009. Created by: fmackay, tmorton

Level 3, GHD Tower, 24 Honeysuckle Drive, Newcastle NSW 2300 T 61 2 4979 9999 F 61 2 4979 9988 E [entlmail@ghd.com.au](mailto:entlmail@ghd.com.au) W [www.ghd.com.au](http://www.ghd.com.au)





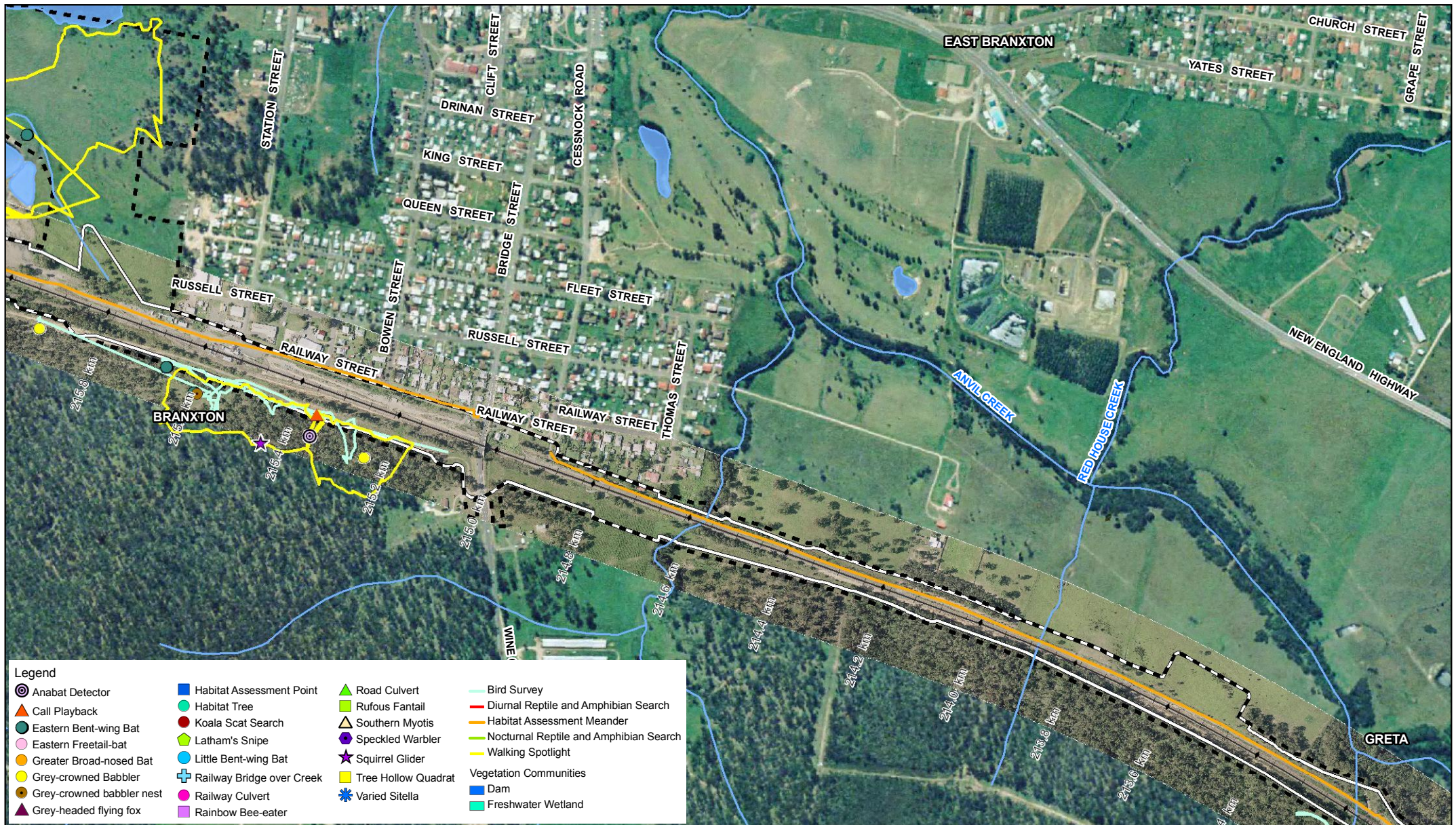
Maitland to Minimbah Third Track  
Submissions Report

Job Number 22-14471  
Revision A  
Date August 2010

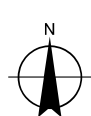
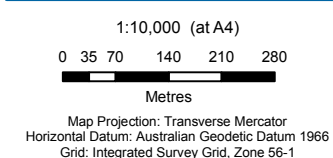
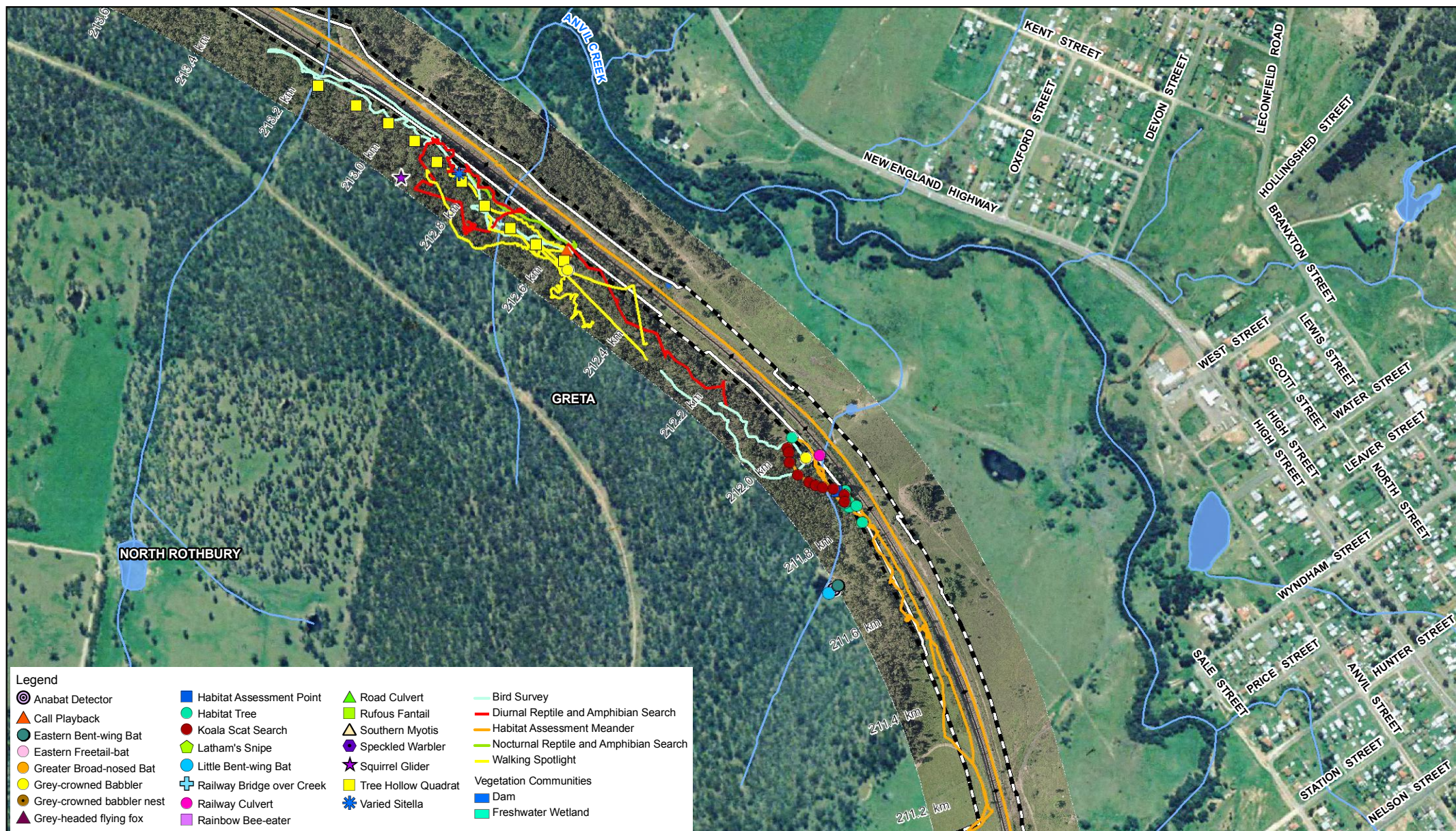
Survey Effort and  
Threatened Species Location

Figure 6.2c



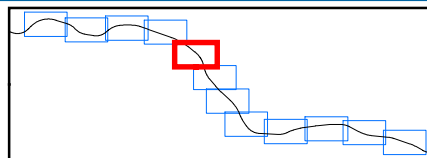






#### LEGEND

- Revised Investigation Area
- Existing Railway
- Revised Construction
- Impact Zone
- Watercourse
- Watercourse Area



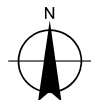
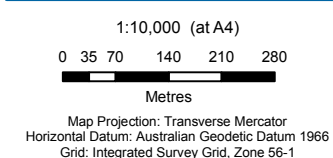
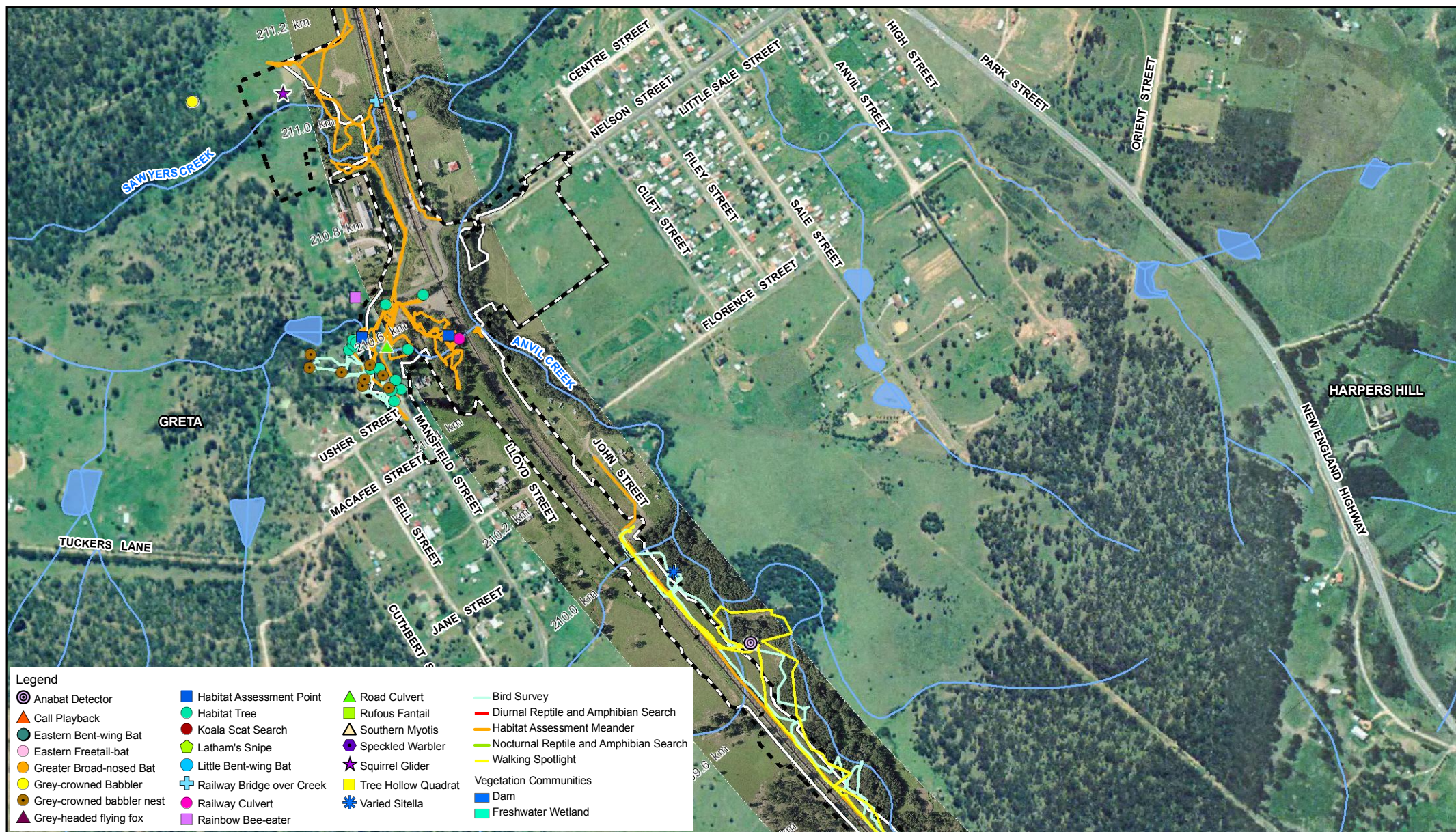
Maitland to Minimbah Third Track  
Submissions Report

Job Number 22-14471  
Revision A  
Date August 2010

Survey Effort and  
Threatened Species Location

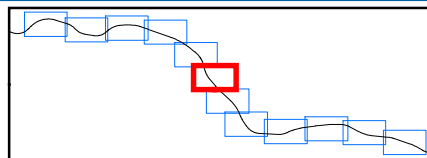
Figure 6.2e





#### LEGEND

- Revised Investigation Area
- Existing Railway
- Revised Construction Impact Zone
- Watercourse
- Watercourse Area



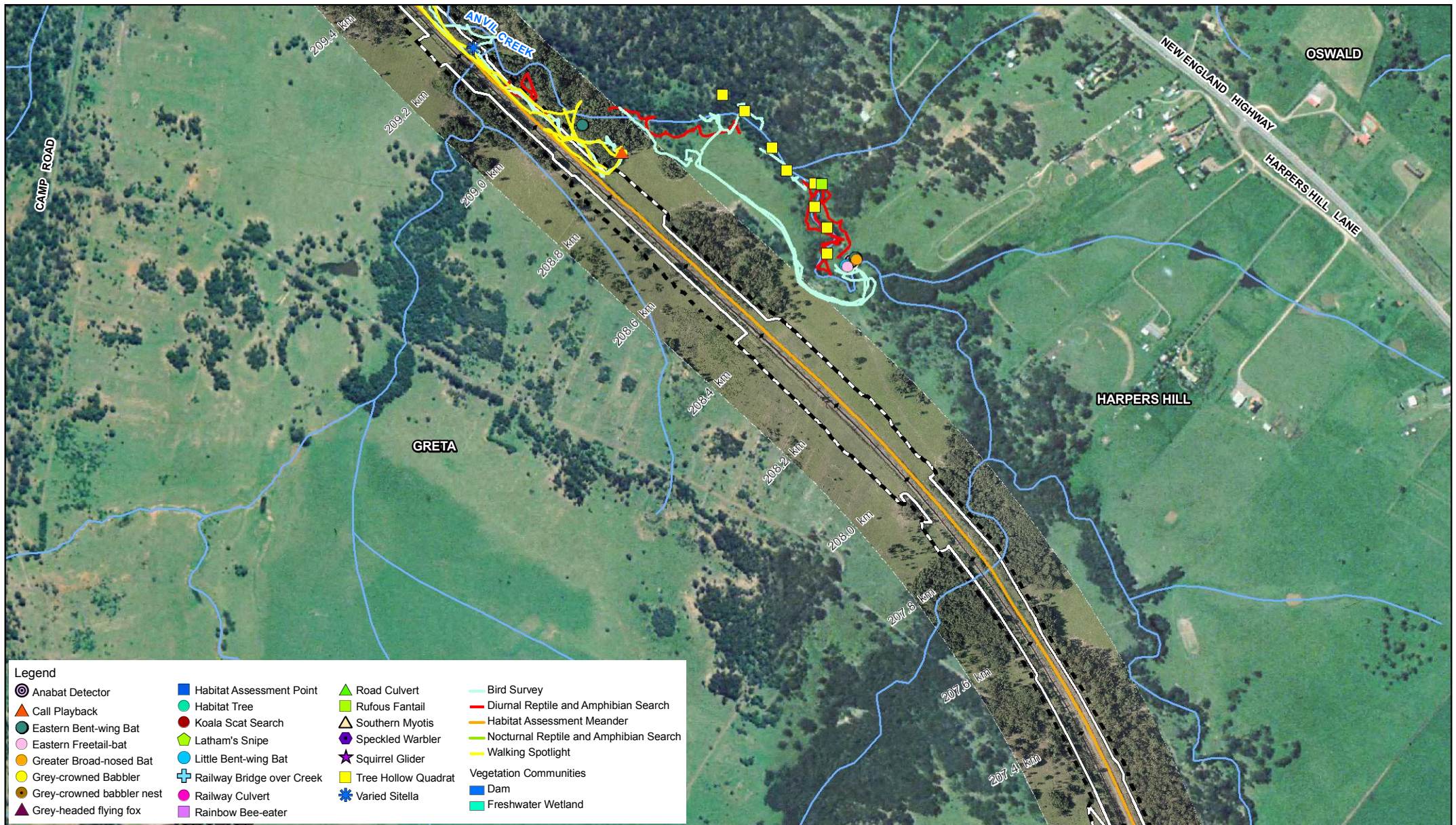
Maitland to Minimbah Third Track  
Submissions Report

Job Number 22-14471  
Revision A  
Date August 2010

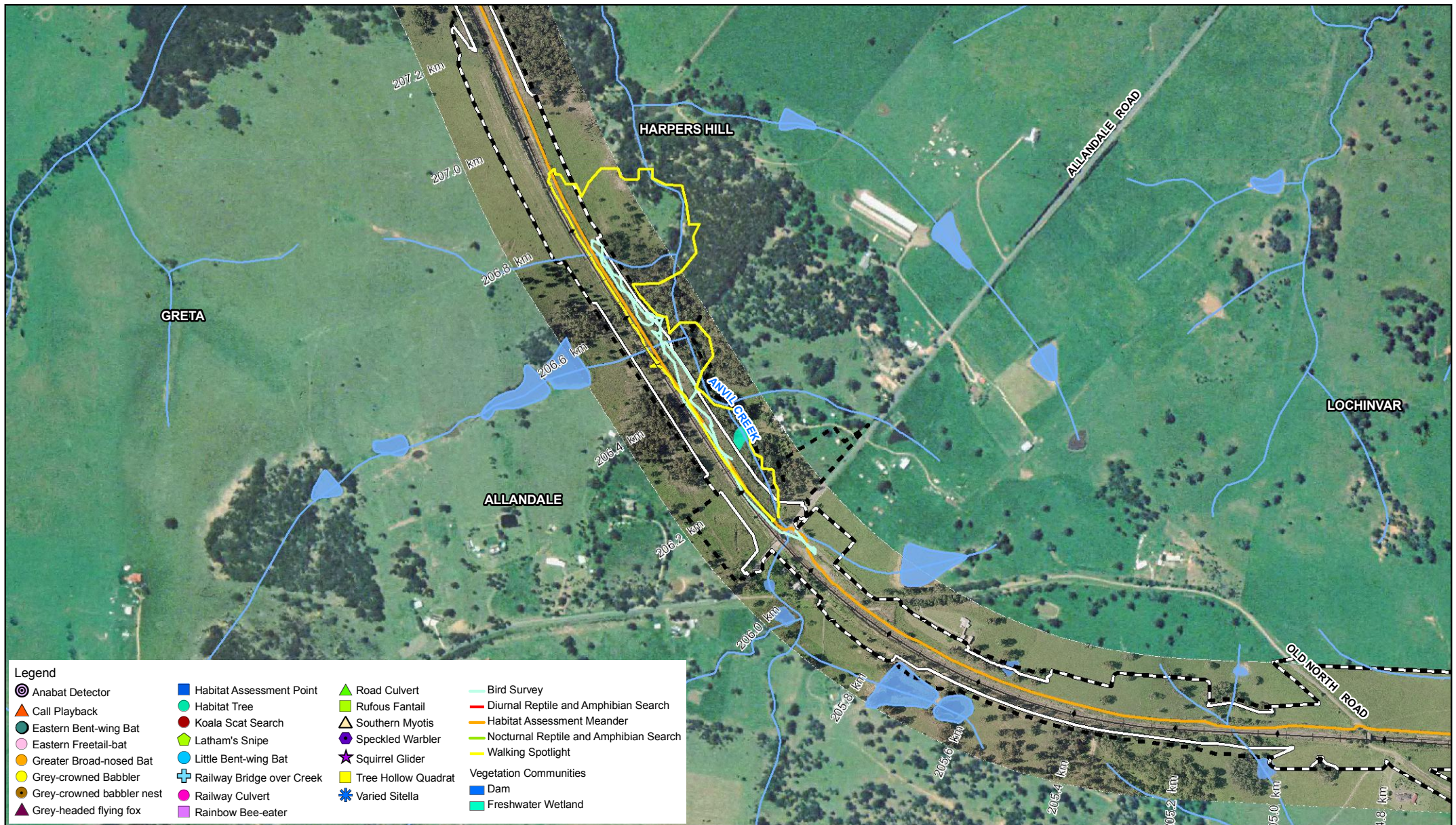
Survey Effort and  
Threatened Species Location

Figure 6.2f

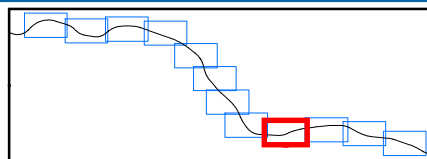
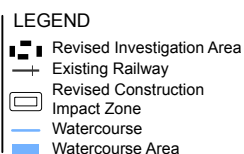
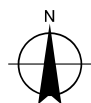
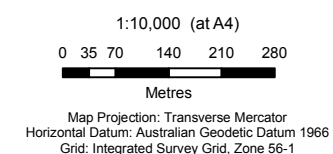
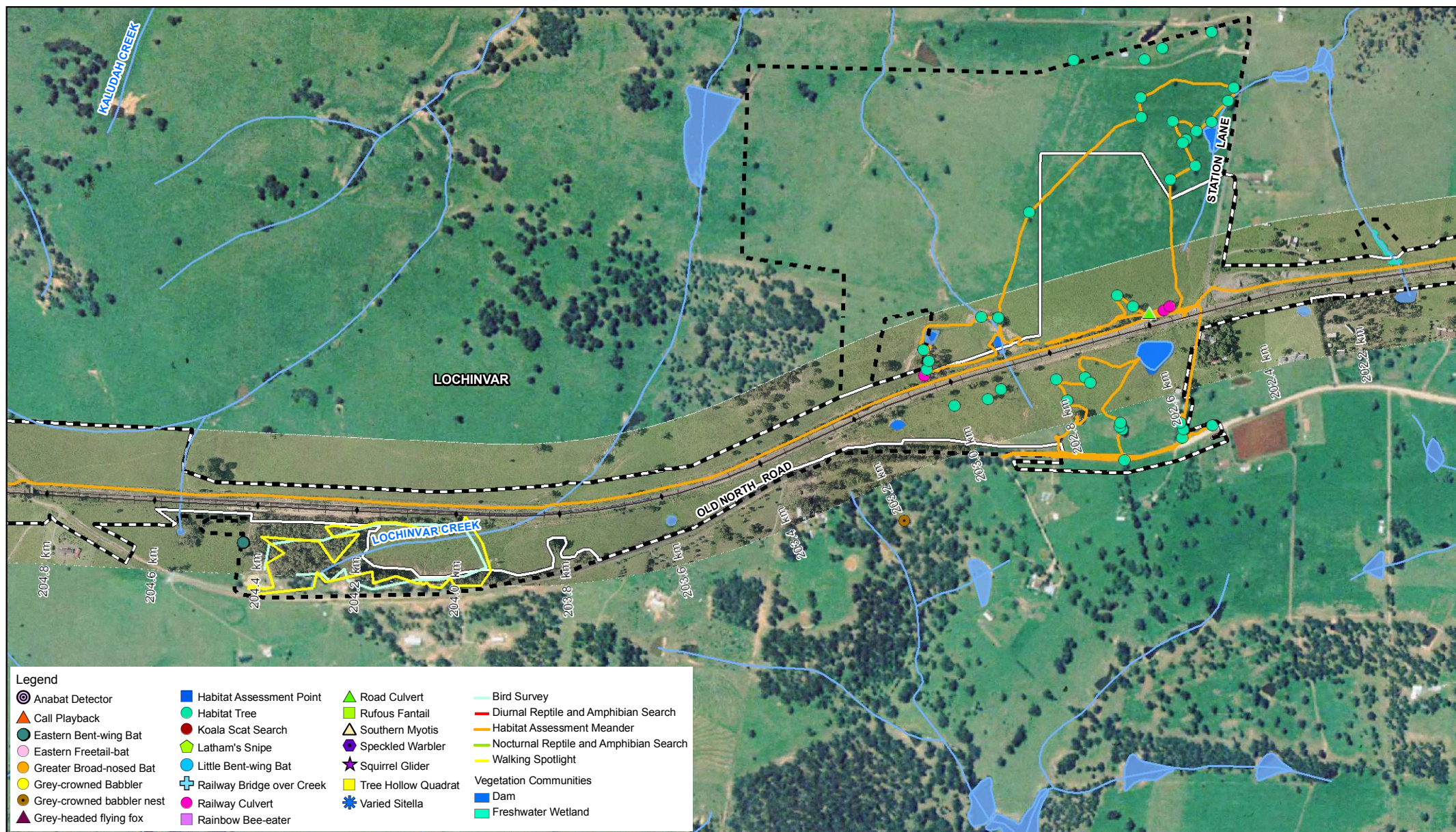












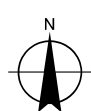
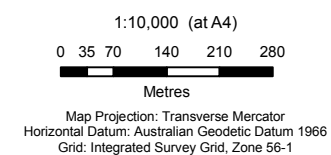
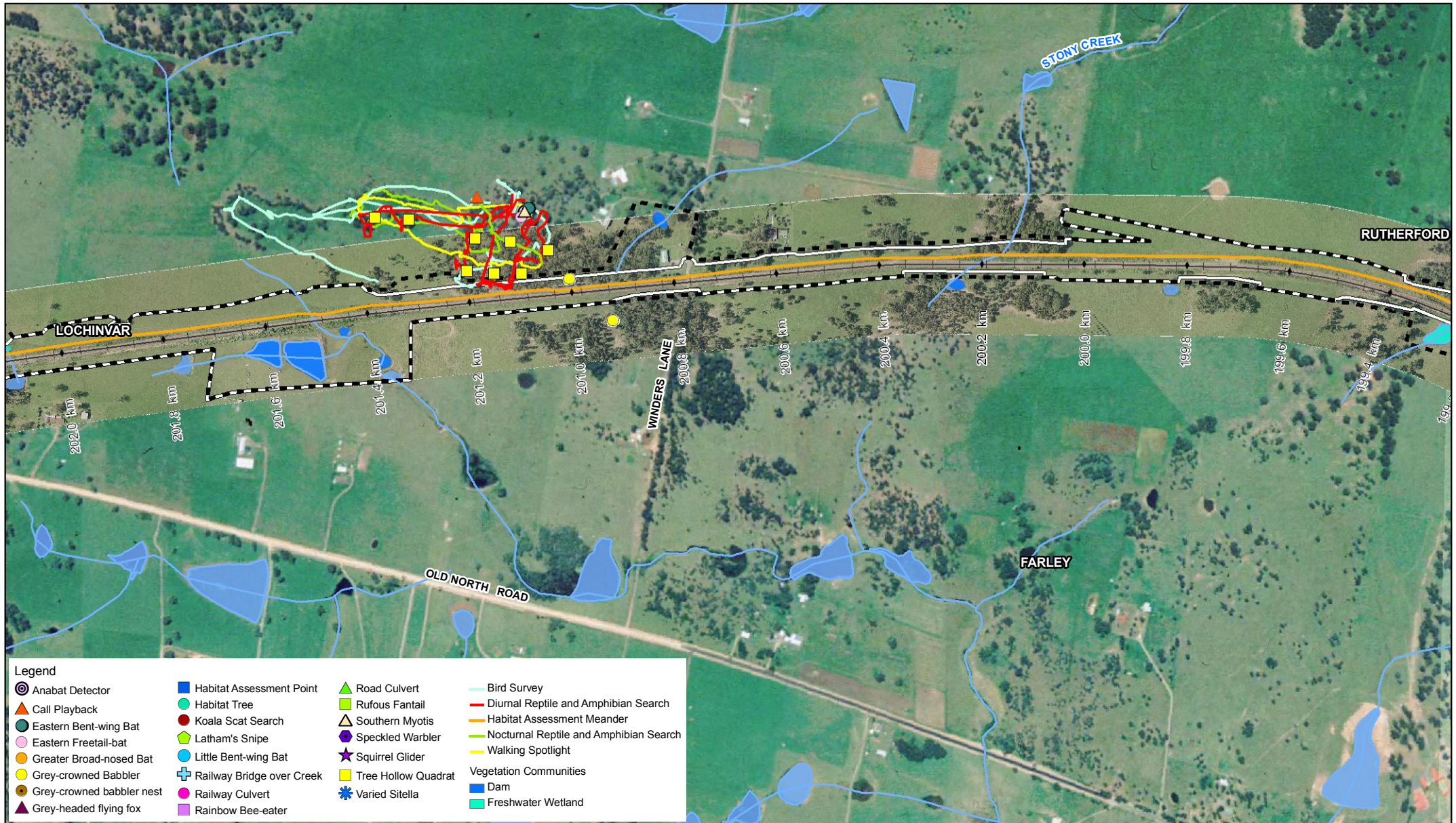
Maitland to Minimbah Third Track  
Submissions Report

Job Number 22-14471  
Revision A  
Date August 2010

Survey Effort and  
Threatened Species Location

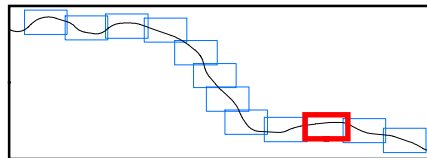
Figure 6.2i





**LEGEND**

- Revised Investigation Area
- Existing Railway
- Revised Construction Impact Zone
- Watercourse
- Watercourse Area



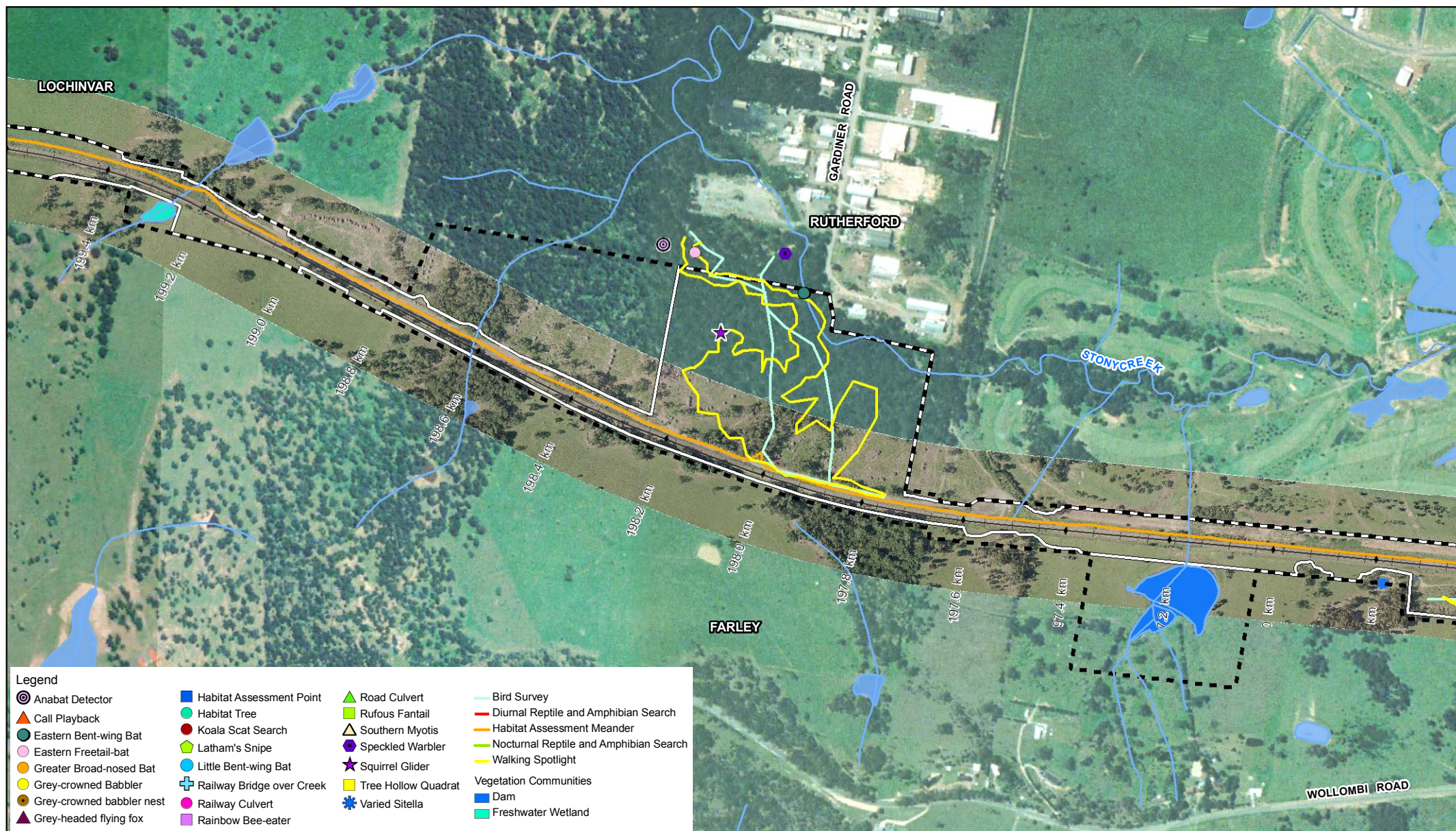
Maitland to Minimbah Third Track  
Submissions Report

Job Number 22-14471  
Revision A  
Date August 2010

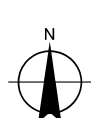
Survey Effort and  
Threatened Species Location

Figure 6.2j

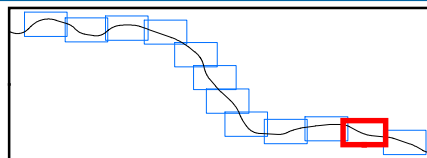




1:10,000 (at A4)  
0 35 70 140 210 280  
Metres  
Map Projection: Transverse Mercator  
Horizontal Datum: Australian Geodetic Datum 1966  
Grid: Integrated Survey Grid, Zone 56-1



**LEGEND**  
 ■ Revised Investigation Area  
 + Existing Railway  
 □ Revised Construction Impact Zone  
 — Watercourse  
 ■ Watercourse Area



Maitland to Minimbah Third Track  
Submissions Report

Job Number 22-14471  
Revision A  
Date August 2010

Survey Effort and  
Threatened Species Location

Figure 6.2k

G:\22\14471\GIS\Maps\Deliverables\PPR\PPR\_Fauna\_Threat\_Species\_20100712.mxd

© 2009. While GHD has taken care to ensure the accuracy of this product, GHD and DEPARTMENT OF LANDS, FUGRO, ECOTONE ECOLOGICAL CONSULTANTS PTY LTD make no representations or warranties about its accuracy, completeness or suitability for any particular purpose. GHD and DEPARTMENT OF LANDS, FUGRO, ECOTONE ECOLOGICAL CONSULTANTS PTY LTD cannot accept liability of any kind (whether in contract, tort or otherwise) for any expenses, losses, damages and/or costs (including indirect or consequential damage) which are or may be incurred as a result of the product being inaccurate, incomplete or unsuitable in any way and for any reason.

Data Source: Department of Lands: Aerial - 2005; Fugro: Aerial - 2008; Ecotone Ecological Consultants Pty Ltd: Fauna Mapping Data - 2009. Created by: fmackay, tmorton

Level 3, GHD Tower, 24 Honeysuckle Drive, Newcastle NSW 2300 T 61 2 4979 9999 F 61 2 4979 9988 E ntmail@ghd.com.au W www.ghd.com.au



