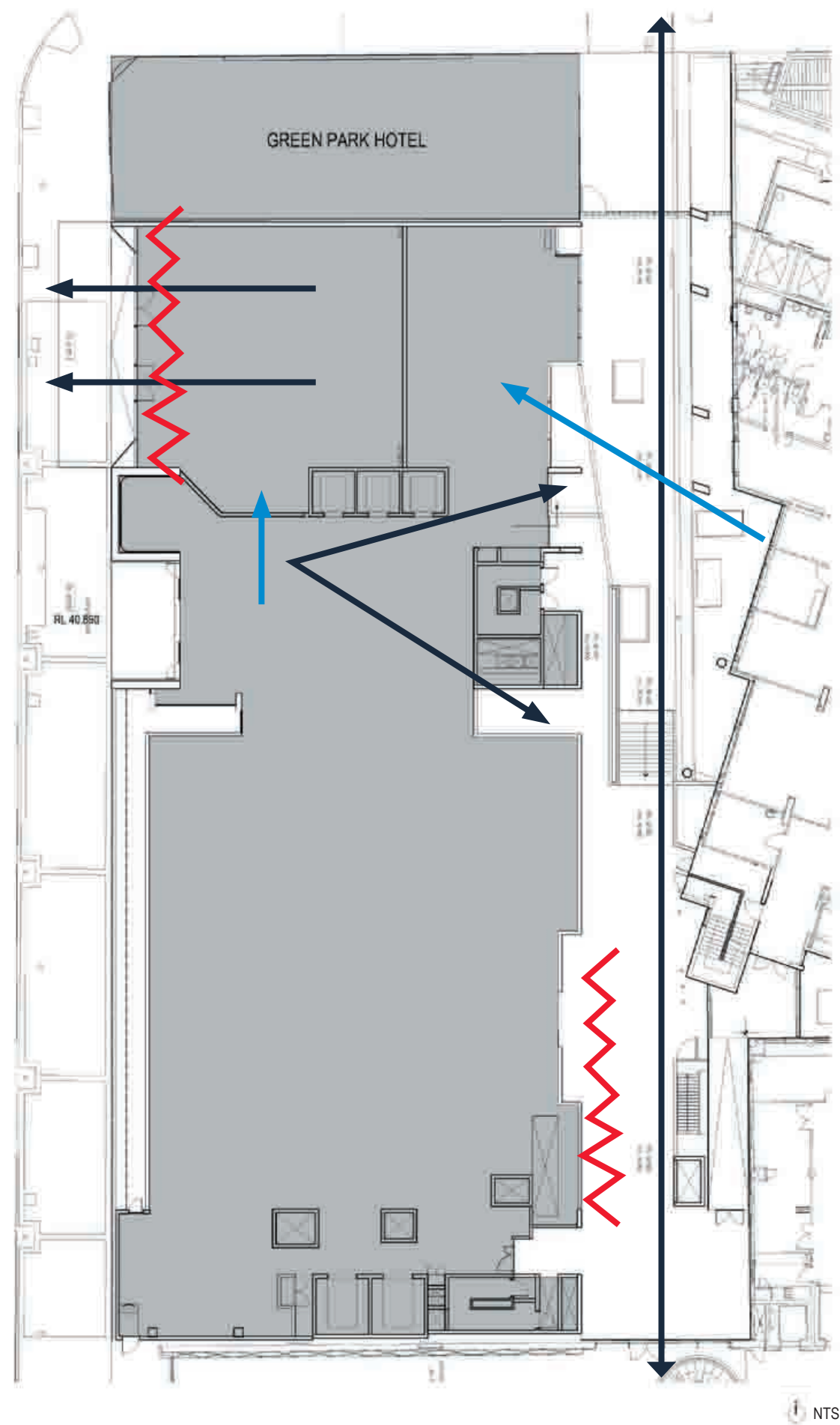
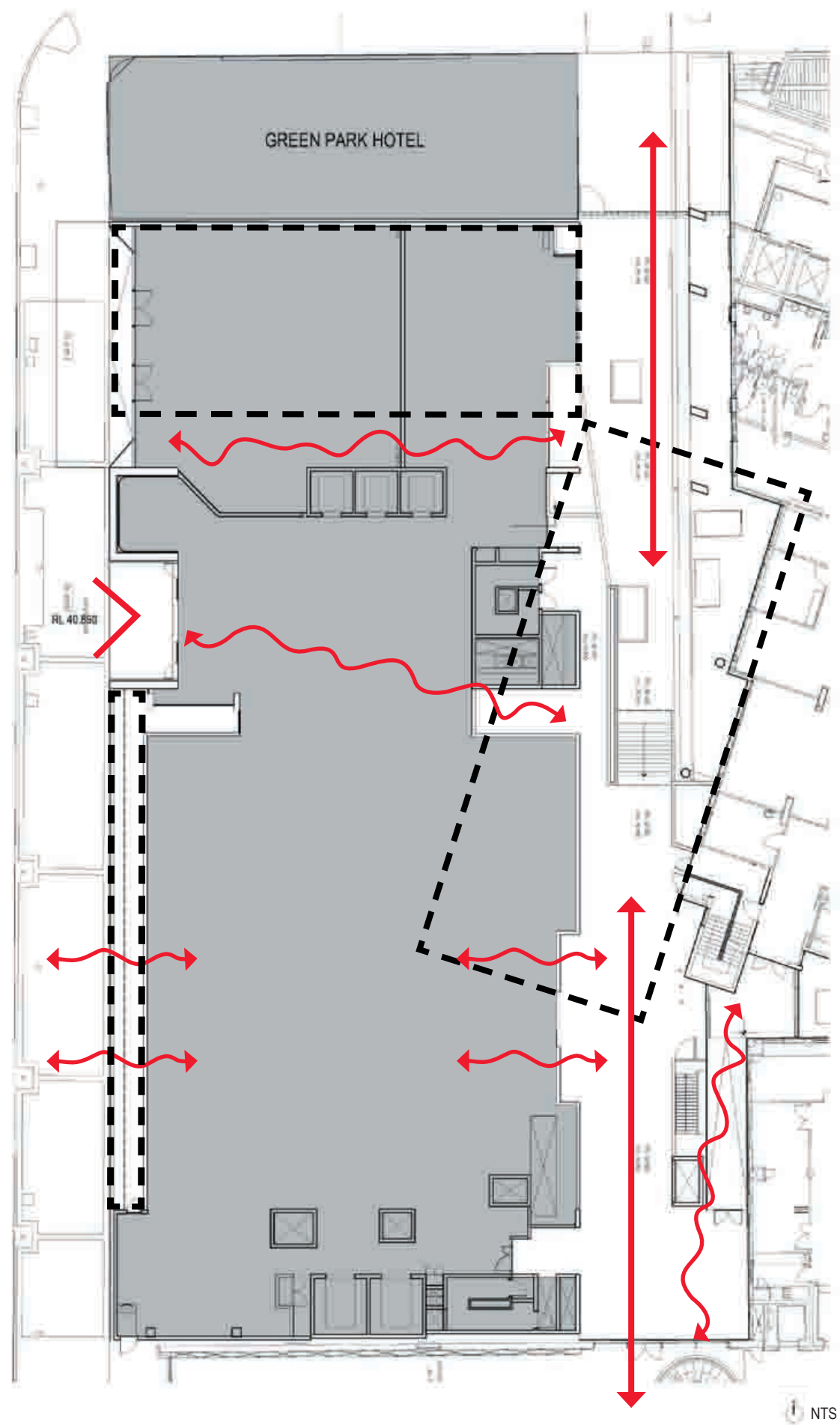




Landscape Concept

9th October 2009



- LEGEND**
- > Main Arrival
 - Key Landscape Areas
 - Chaplin Lane Arrival
 - ~ Circulation
 - ~ Active Edge
 - Views from Above
 - Key Views

SITE ANALYSIS PLAN

Level 5, 68-72 Wentworth Avenue, Surry Hills NSW 2010 p' +612 9212 2204 f' +612 9212 2256 @ www.360.net.au



The landscape of the new Garvan and St Vincents Cancer Centre will

- provide inspiration, respite, amenity, functionality and privacy, as appropriate to each landscape space, (ie. *Streetscape & Entry*, *Chaplin Lane* and the *Rooftop Landscapes*)
- provide landscape continuity for the site, its adjacent buildings and the wider context
- maximise accessibility and ease of movement
- contribute positively to the Victoria Street and Liverpool streetscapes, including Chaplin Lane
- provide varied amenity for patients, staff and visitors
- complement the architecture
- demonstrate design excellence by the use and fine detailing of a restrained material palette, including quality concrete paving for walls and seating, timber and steel

STREETSCAPE & ENTRY

To the Victoria Street facade, a filigree of mixed ornamental climbers is proposed (comprising *Parthenocissus*, *Jasmine* and *Bougainvillea*) to create a dynamic and vibrant frontage with seasonal interest, colour and scent. The planting will climb a mesh screen that extends throughout the recessed void between the southern boundary and the lobby entry. The planting design intends to add a layer to the character of the streetscape, in complement to the existing street trees (*Platanus* spp). The climbers will also provide privacy to the offices and consultation rooms from levels 3-7. The species selection is intended to maximise winter solar access and to mitigate the summer western sun. The architectural glazing at the boundary provides a maintenance edge to the public domain. At ground level, additional screening and amenity are provided by character understorey planting, including *Cordyline*, *Colocasia*, and *Asplenium* spp.

The planting extends into atrium gardens in the Arrival Foyer. The species selection here include *Cordyline*, *Colocasia*, and hardy shade tolerant underplantings of *Pellaea* spp, *Davallia* and *Peperomia*, providing legible and highly visible landscape continuity that extends through to Chaplin Lane. The Rooftop Landscape is also visible from the Entry foyer.

CHAPLIN LANE

Chaplin Lane is a split-level shared zone providing access and egress, for pedestrians and service vehicles (at the lower level), as well as a private breakout space for HOAC patients at the upper level. A steel portal frame over the egress stairs provides clarity for access and interest in the space, particularly when lit at night. The design for the lane incorporates elements to ensure security, including passive surveillance via clear sight lines to and from buildings and Liverpool Street, lighting, and rationalised elements (for example bench seats) and spaces that might encourage undesirable activity.

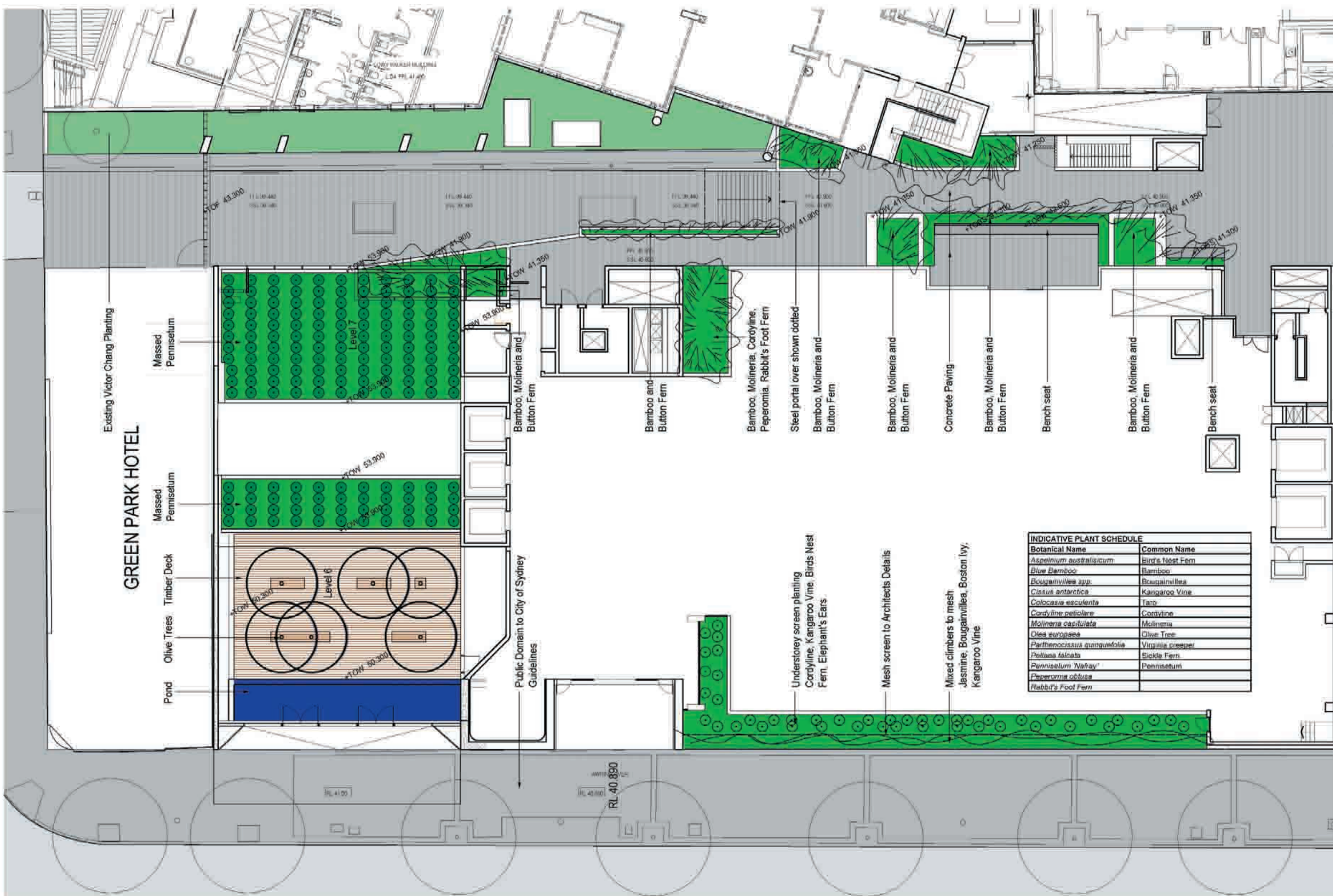
The existing planting to the western edge of the Lowy Packer Building will be retained and protected. The species utilised there have been incorporated into the proposed planting palette for the Garvan and St Vincents Cancer Centre, for example, *Cissus*, *Asplenium* and *Bamboo*, to enhance a sense of landscape continuity and cohesion. The design seeks to maximise planted areas with a selection of robust, shade tolerant planting that will enliven the space and mitigate the scale of the surrounding built forms.

LEVELS 6 & 7 ROOFTOP LANDSCAPES

To Level 6, is a functional, low-maintenance, low-water-use landscape comprising a grove of olive trees in recycled hardwood timber decking. The olive grove is viewable from the entry foyer, and its distinctive variation in character from the ground-level landscapes, provides diversity and interest that befits the proposed use of the space for staff breakout and functions. A masonry wall screens the Green Park Hotel roof to the north, creating an intimate courtyard space. A raised water feature to the western edge acts as the balustrade. The water body is passive and reflective, with a gentle spill over its front face to add movement and noise abatement for the courtyard.

Olives are selected for their character, appropriate scale, manageability, evenness of solar access through the seasons, (ie providing a good balance of light in winter and shade in summer) and resilience to exposed rooftop conditions. On the Level 7 rooftop is a massed planting of hardy, low-maintenance, drought-tolerant native grasses, ie *Pennisetum 'Nafray'*.

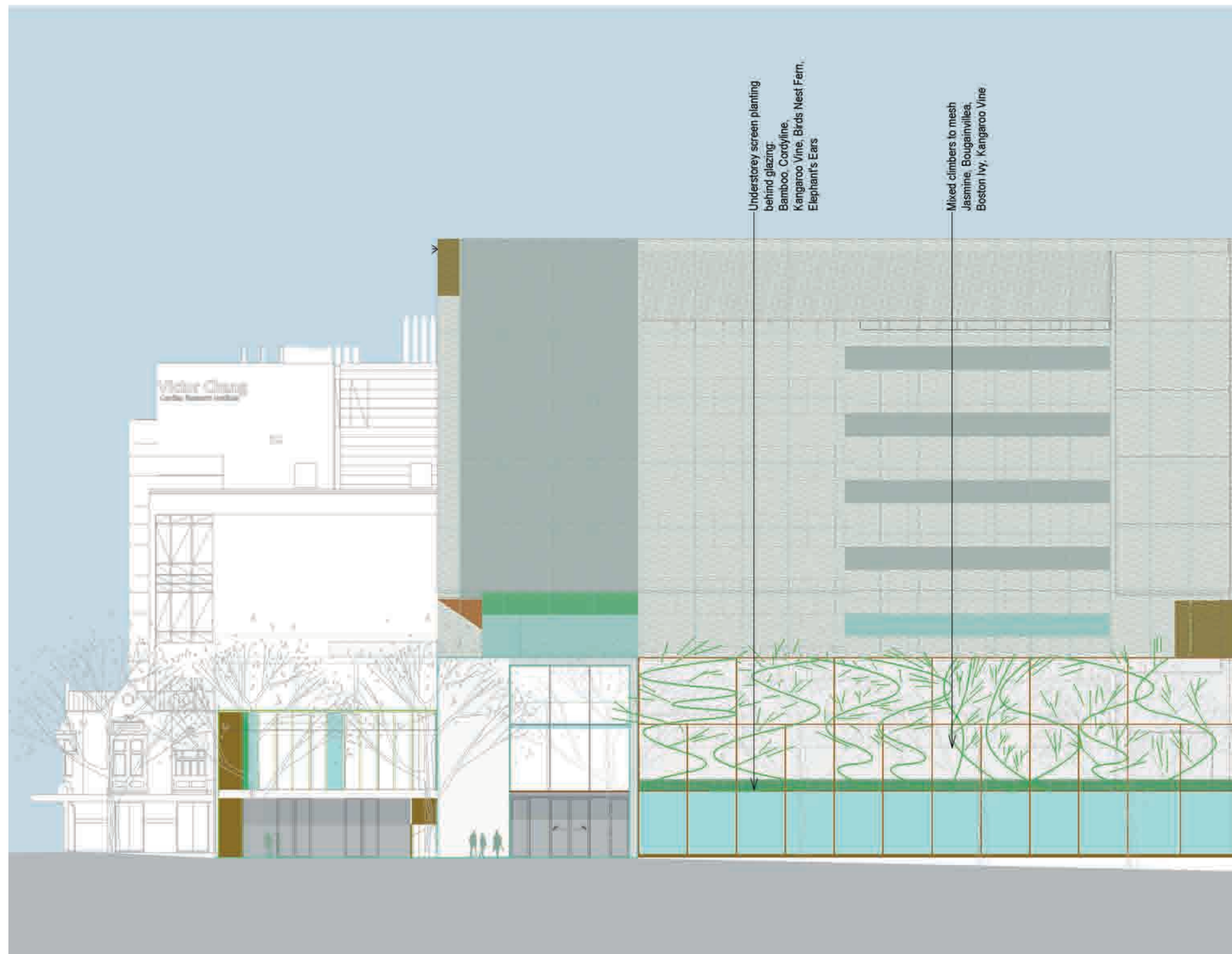
LANDSCAPE DESIGN INTENT



LANDSCAPE CONCEPT PLAN

Level 5, 68-72 Wentworth Avenue, Surry Hills NSW 2010 p' +612 9212 2204 f' +612 9212 2256 @ www.360.net.au



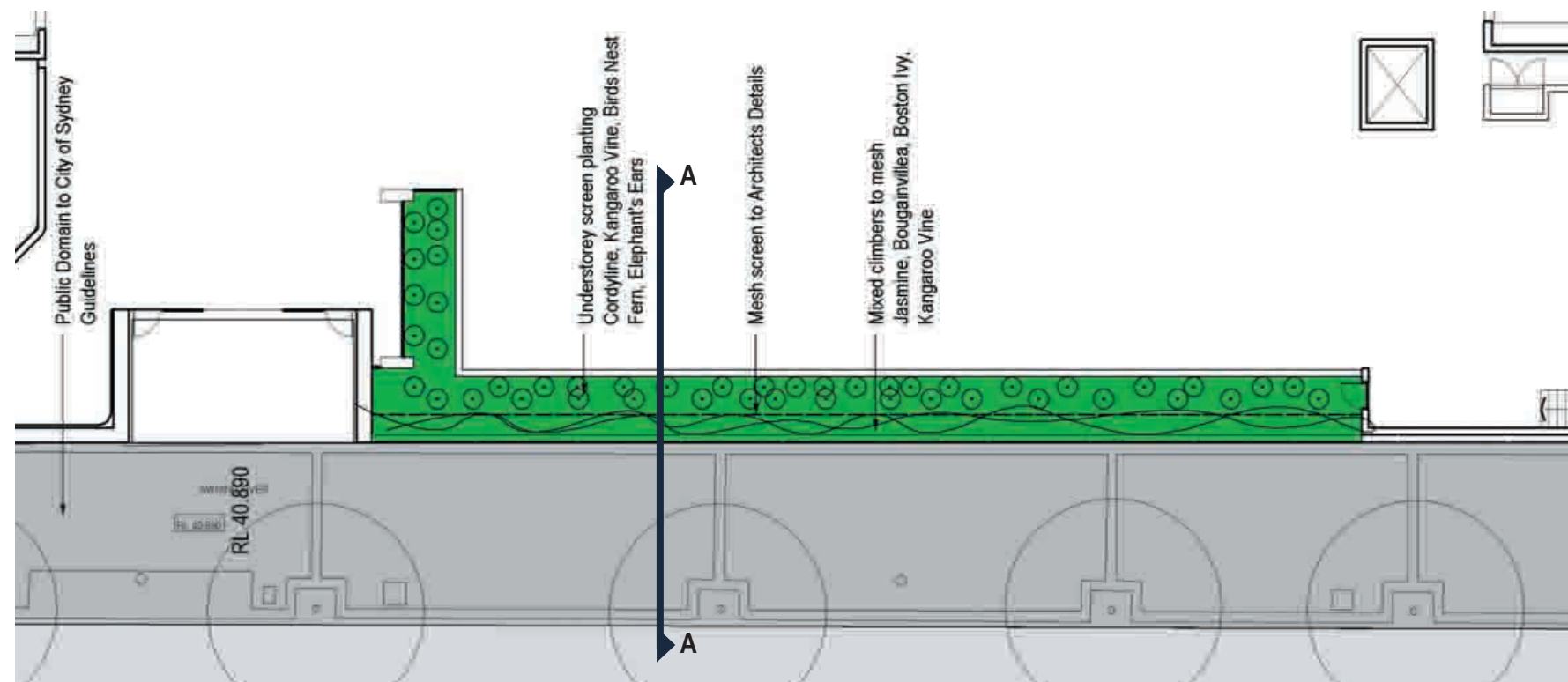


ELEVATION

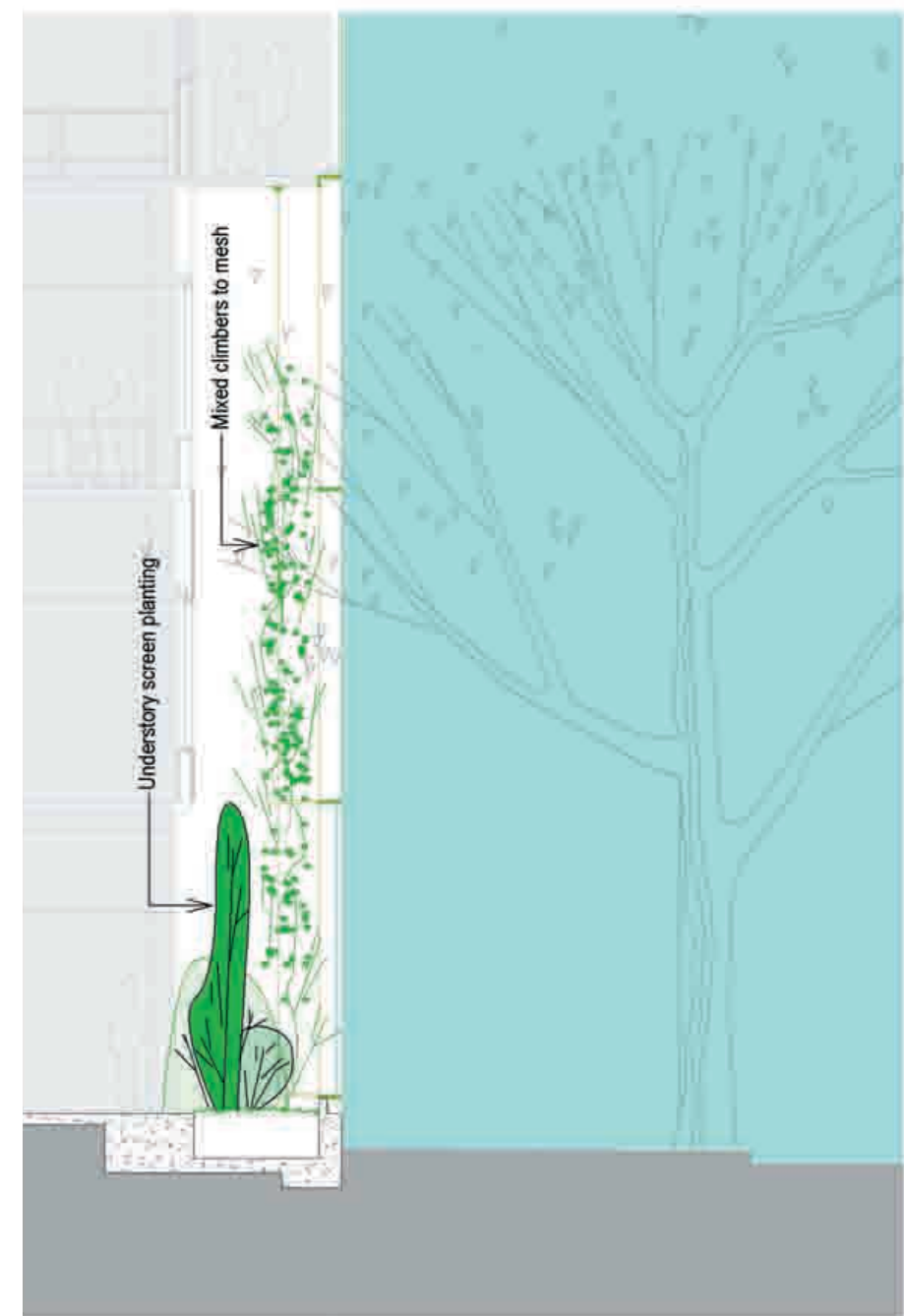
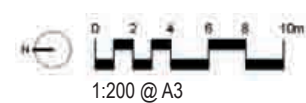
0 2 4 6
1:250 @ A3

VICTORIA STREET AND RECEPTION GARDEN

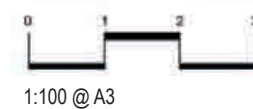
Level 5, 68-72 Wentworth Avenue, Surry Hills NSW 2010 p' +612 9212 2204 f' +612 9212 2256 @ www.360.net.au



PLAN



SECTION AA



VICTORIA STREET AND RECEPTION GARDEN

Level 5, 68-72 Wentworth Avenue, Surry Hills NSW 2010 p' +612 9212 2204 f' +612 9212 2256 @ www.360.net.au



Deciduous climbers



Mixed climbers



Kangaroo vine



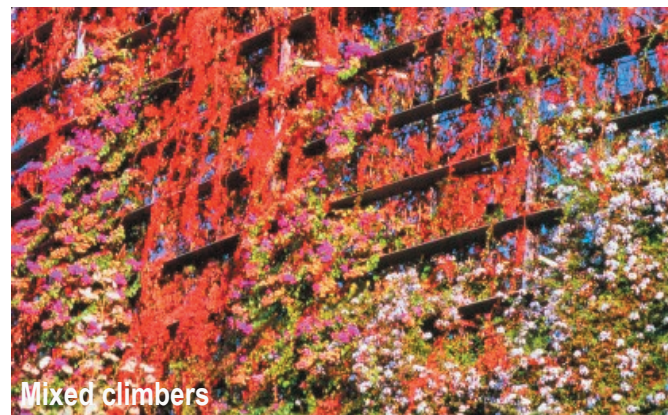
Elephants Ears



Button Fern



Deciduous climbers



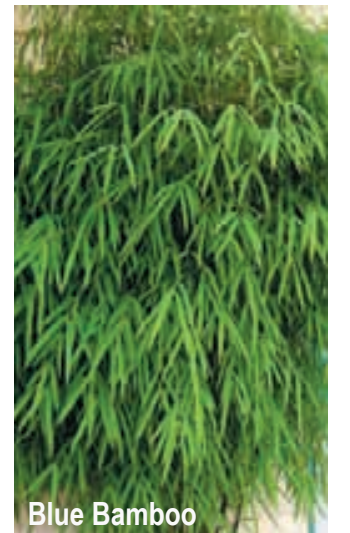
Mixed climbers



Molineria



Cordyline



Blue Bamboo



Jasmine



Boston Ivy



Rabbits foot fern



Peperomia

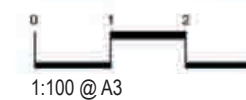


Bird's Nest Fern

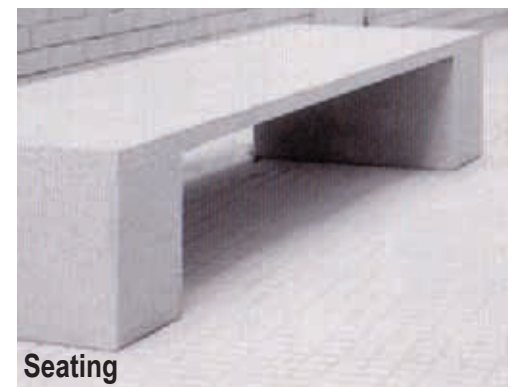
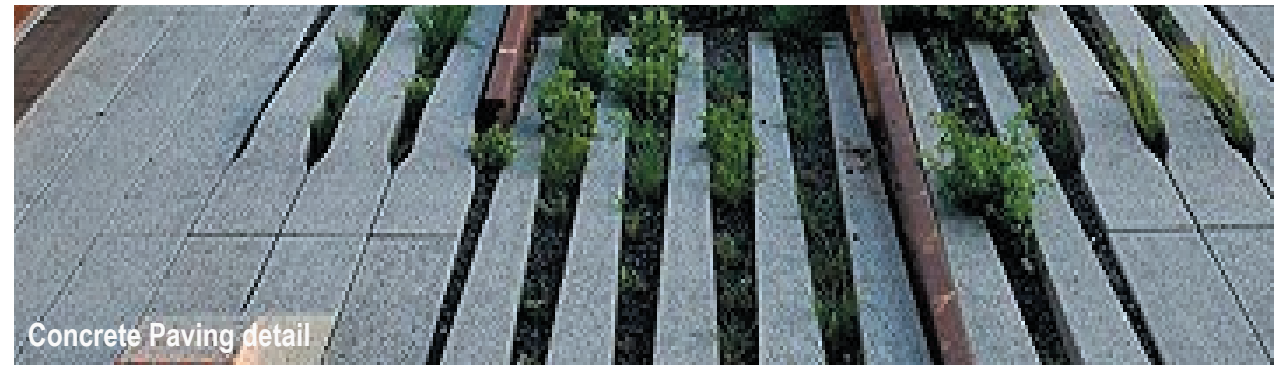
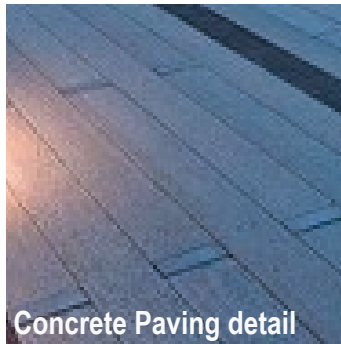
Understorey planting

Mixed Climbers

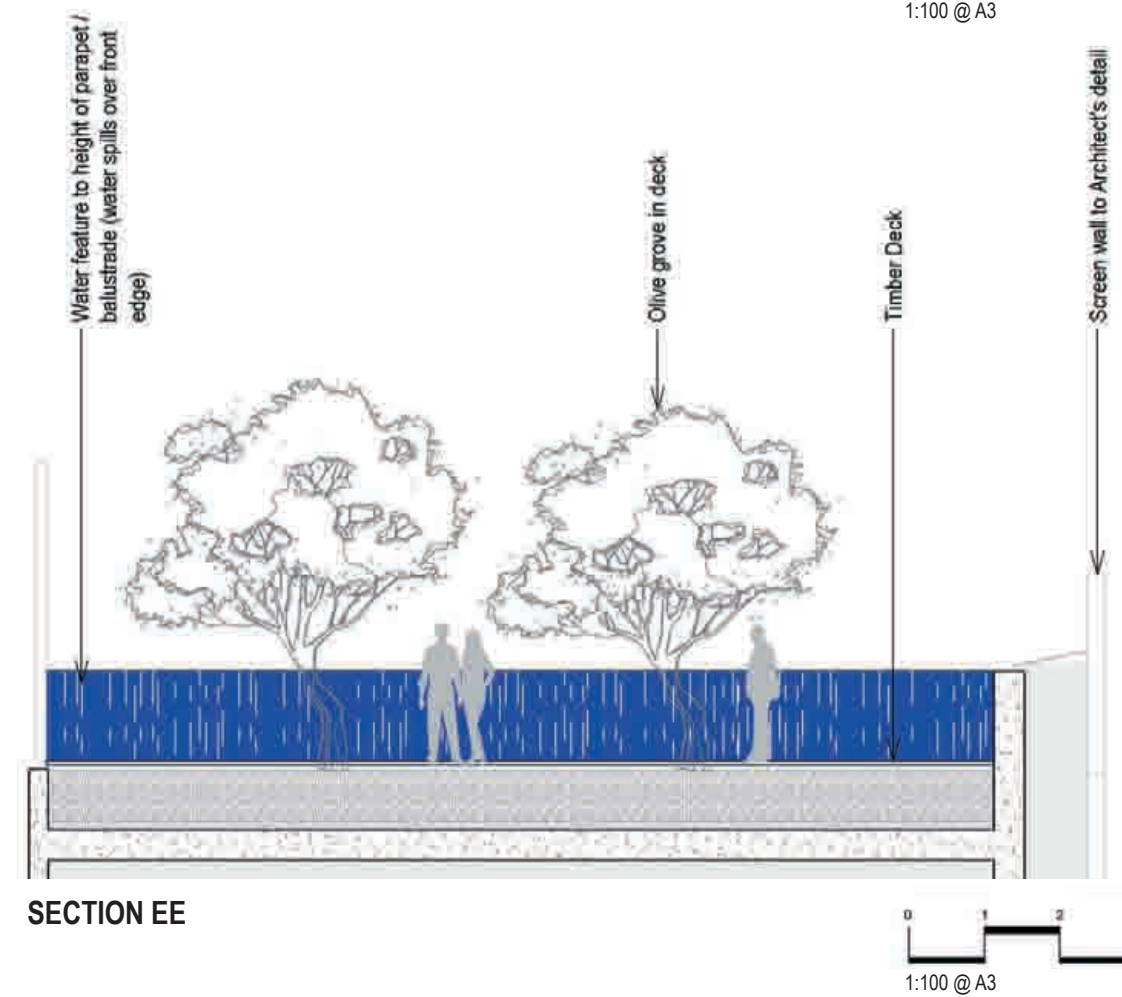
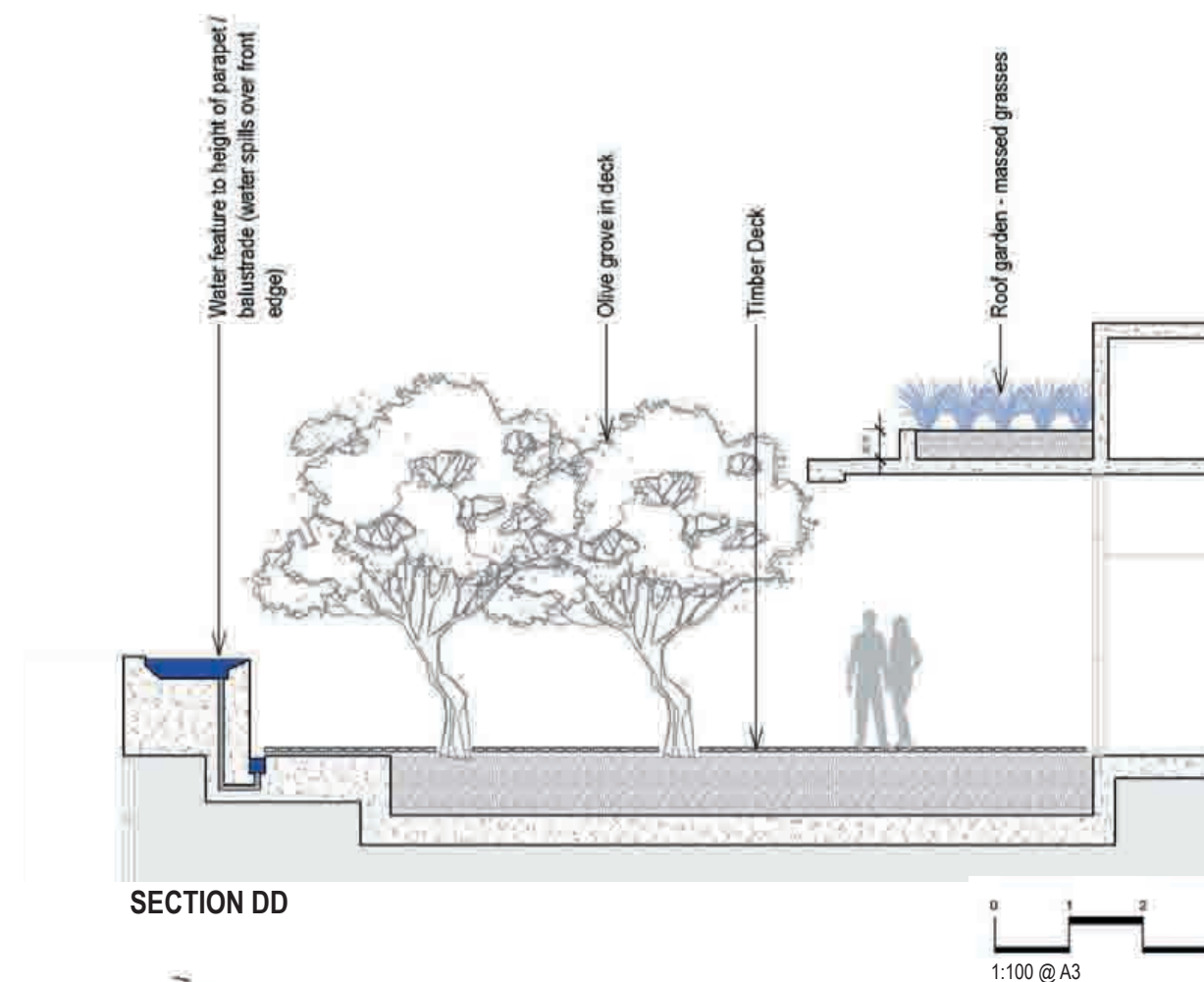
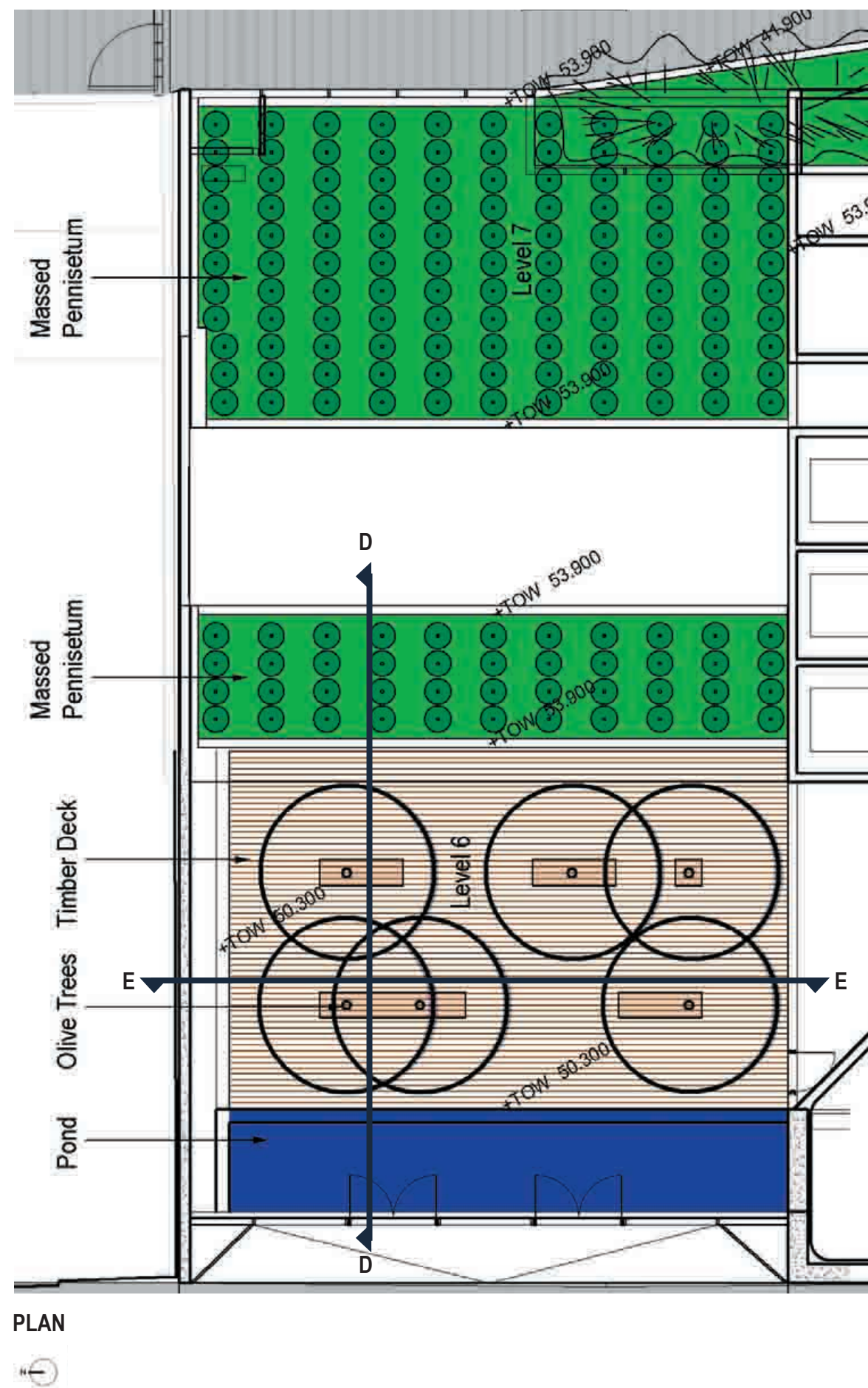
Victoria Street and Reception Garden - Character



LANEWAY LANDSCAPE



Laneway Landscape - Character



LEVEL 6 & 7 ROOF GARDENS

Level 5, 68-72 Wentworth Avenue, Surry Hills NSW 2010 p' +612 9212 2204 f' +612 9212 2256 @ www.360.net.au



Olive grove in deck



Tree grove in deck with underplanting



Uplighting in deck



Olive



Water feature detail



Water feature detail



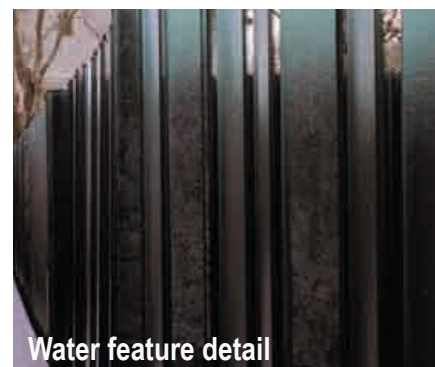
Pennisetum



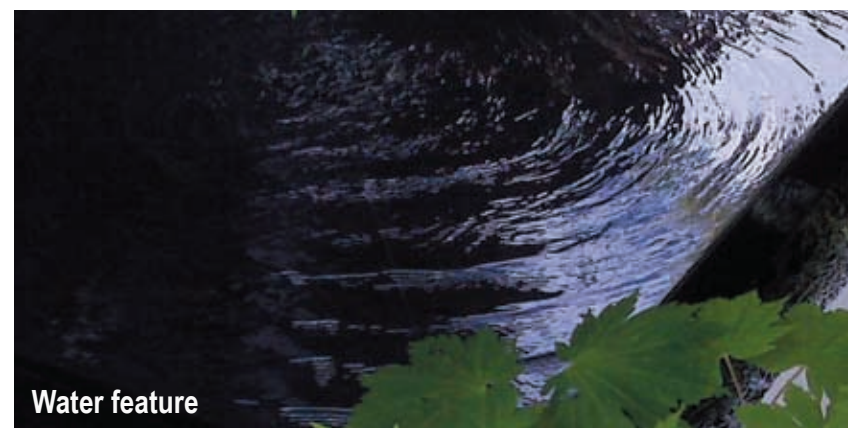
Tree grove and grasses



Tree grove in deck



Water feature detail



Water feature

Levels 6 & 7 Roof Gardens - Character

Level 5, 68-72 Wentworth Avenue, Surry Hills NSW 2010 p' +612 9212 2204 f' +612 9212 2256 @ www.360.net.au