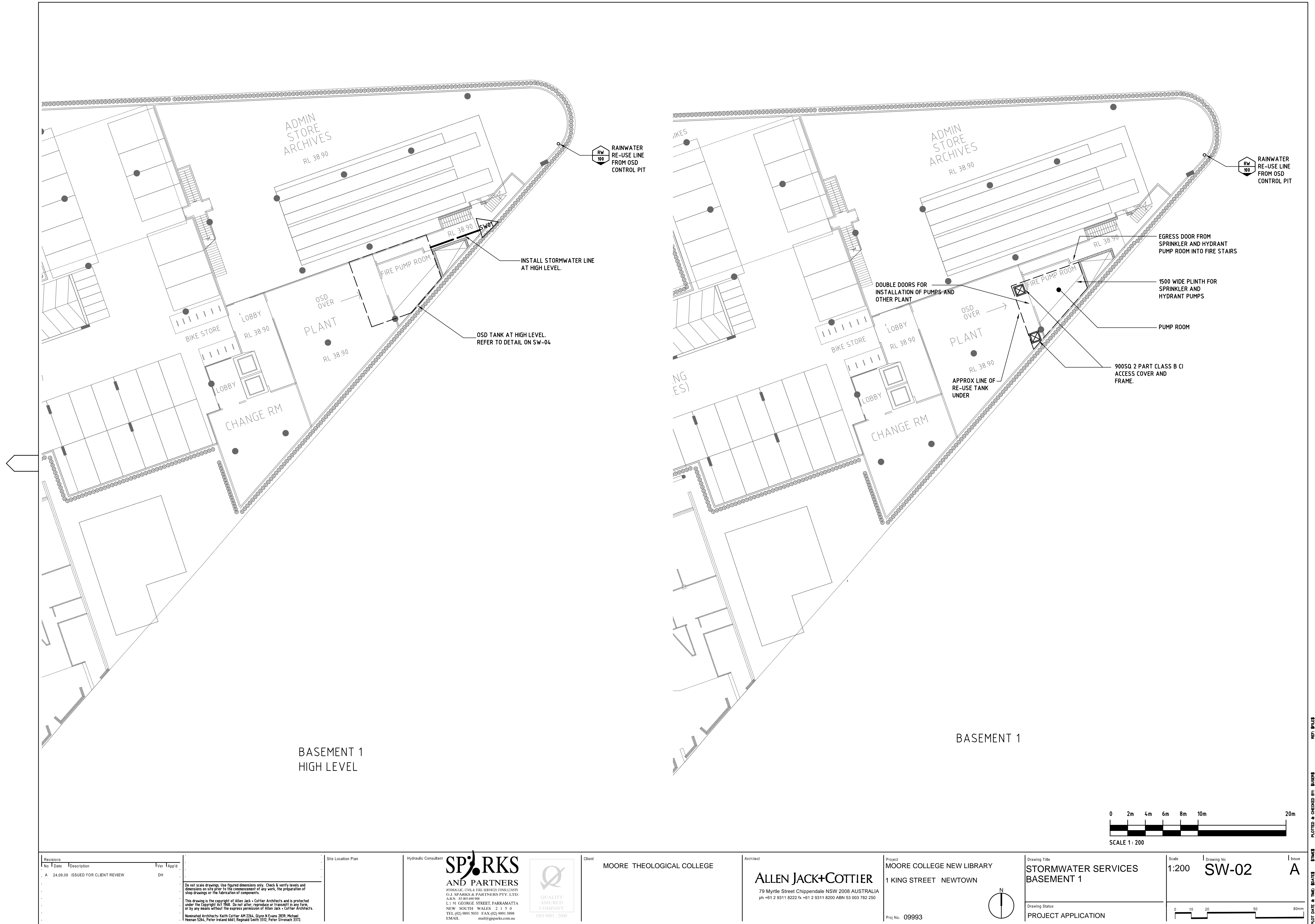


S:\work\09993\stormwater\09993-SW02.dwg, 2/10/2009 2:47:38 PM, DWG To PDF.pc3



Revisions			
No	Date	Description	Ver App'd
A	24.09.09	ISSUED FOR CLIENT REVIEW	DH

Do not scale drawings. Use figured dimensions only. Check & verify levels and dimensions on site prior to the commencement of any work, the preparation of shop drawings or the fabrication of components.

This drawing is the copyright of Allen Jack + Cottier Architects and is protected under the Copyright Act 1968. Do not alter, reproduce or transmit in any form, or by any means without the express permission of Allen Jack + Cottier Architects.

Nominated Architects: Keith Cottier AM 2264, Glynn W Evans 2839, Michael Newman 5264, Peter Ireland 6661, Reginald Smith 3372, Peter Stronach 3372.

Site Location Plan

Hydraulic Consultant:

**SPARKS**  
AND PARTNERS

HYDRAULIC, CIVIL & FIRE SERVICES CONSULTANTS  
C.J. SPARKS & PARTNERS PTY. LTD.  
A.B.N. 51 00 699 906  
L1 91 GEORGE STREET, PARRAMATTA  
NEW SOUTH WALES 2150  
TEL (02) 9691 5033 FAX (02) 9691 3098  
EMAIL: mail@sparkspartners.com.au



Client

MOORE THEOLOGICAL COLLEGE

Architect

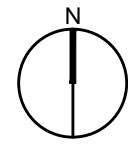
**ALLEN JACK+COTTIER**

79 Myrtle Street Chippendale NSW 2008 AUSTRALIA  
ph +61 2 9311 8222 fx +61 2 9311 8200 A.B.N. 53 003 782 250

Project

MOORE COLLEGE NEW LIBRARY  
1 KING STREET NEWTOWN

Proj No. 09993



Drawing Title

STORMWATER SERVICES  
BASEMENT 1

Drawing Status

PROJECT APPLICATION

Scale

1:200

Drawing No

SW-02

Issue

A

0 10 20 30 40 50 60 70 80m

9/25/2009 10:00:00 AM PLOTTED & CHECKED BY: BUDGARD