



KEY

- College Green
- Residential Courtyard Gardens
- Private Terraces
- Streetscape

- Concept site boundary
- Pedestrian Entry Point
- Vehicular Entry Point

LANDSCAPE SPATIAL ANALYSIS

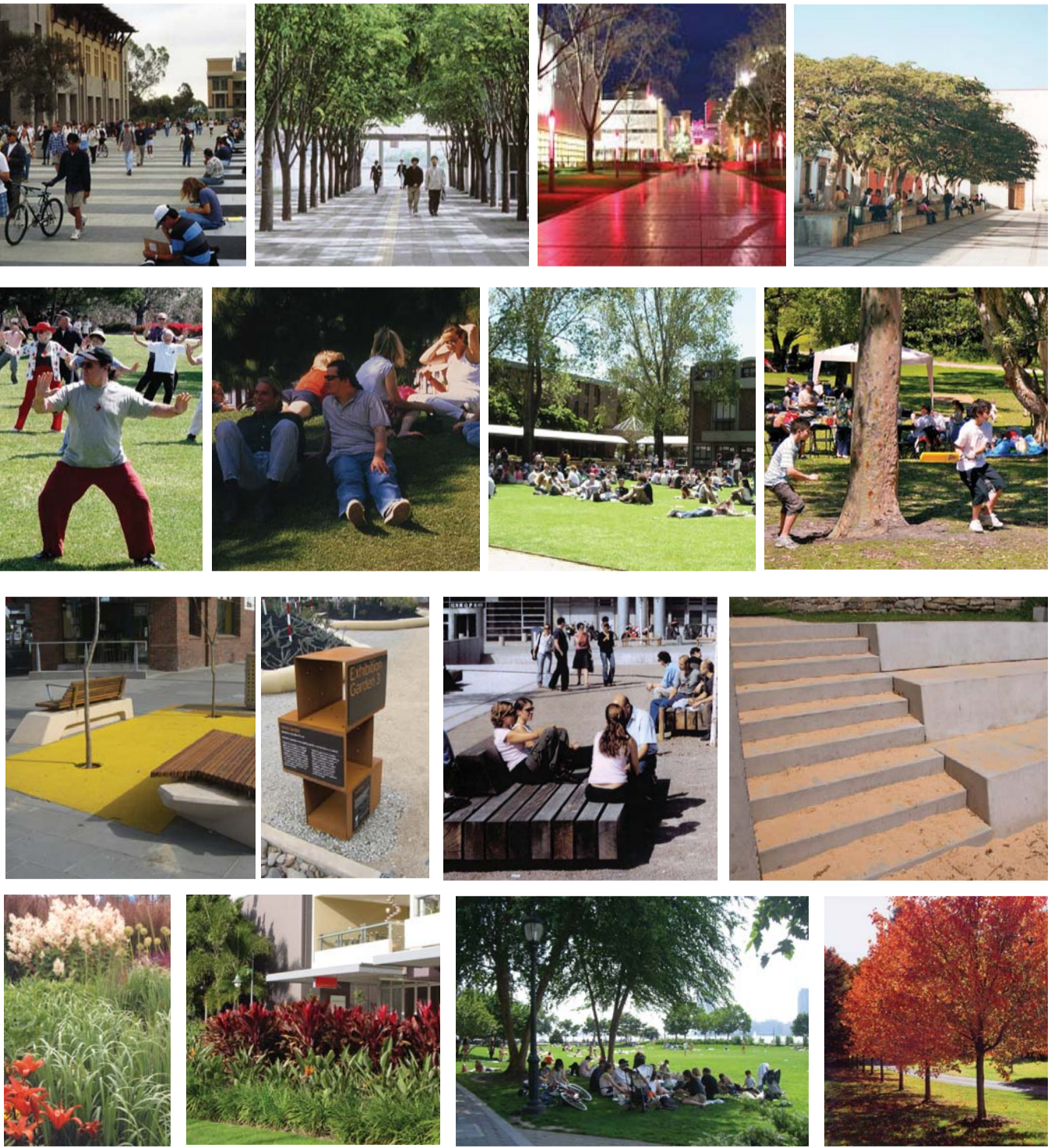
SITE B - RESIDENTIAL COURTYARD GARDENS

- Children's play**
  - Provision of small children's play areas 'pods' within college gardens for use by children living on campus
  - Play spaces can include a sand pit, balancing beams, a small climbing net and timber decks / seating for supervising adults
- Planting**
  - Detailed planting designs within the college gardens playing on colour texture and seasonality to create year long visual interest
  - Planting to provide privacy buffer between ground floor units and private open spaces
  - Planting to create a private oasis for residents of the college
- Communal / Gathering Space**
  - Variety of seating types to cater for different uses
  - Seating to be of a generous scale and include day beds and lounges to encourage use and outdoor relaxation within the college gardens
- Passive Recreation**
  - Provision of smaller, more intimate spaces in western courtyard for passive recreation and small gatherings
  - Water used as cooling and calming device to evoke the perception of a private oasis
  - Variety of seating to be set within highly detailed planted areas to provide privacy
  - Deciduous trees used to provide summer shade and allow for winter sun



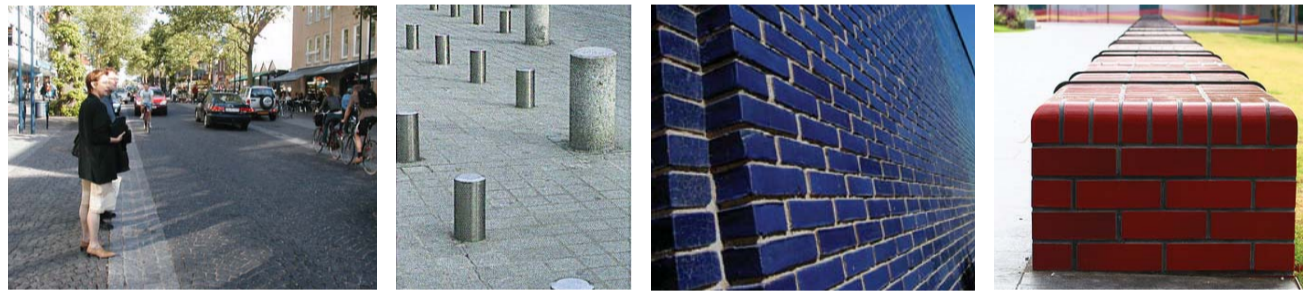
SITE B - COLLEGE GREEN

- Pedestrian Access**
  - Wide paved pedestrian mall providing major connection between college housing and learning / dining buildings
  - Internal spine that forms the main address / entry point from which major buildings and open spaces are hinged
  - Trees, lighting and seating create habitable spaces at the edge of the spine
- College Green**
  - Flexible open turf area for formal events, casual gatherings and lunch time use
  - Provides opportunities for small informal games / activities and children's play
  - Casual study space
- Passive Recreation Areas**
  - Provision of smaller, more intimate spaces in for passive recreation and small gatherings
  - Variety of seating to accommodate different user groups within planted areas to provide privacy
  - Seating steps providing informal seating at edges
- Buffer Planting + Trees**
  - Planting of varying heights, colours and textures used to provide a green buffer between public spaces and private terrace houses to the west
  - Provision of evergreen canopy trees that provide year long shade and screening
  - Provision of deciduous feature trees to provide summer shade, winter sun and seasonal variation



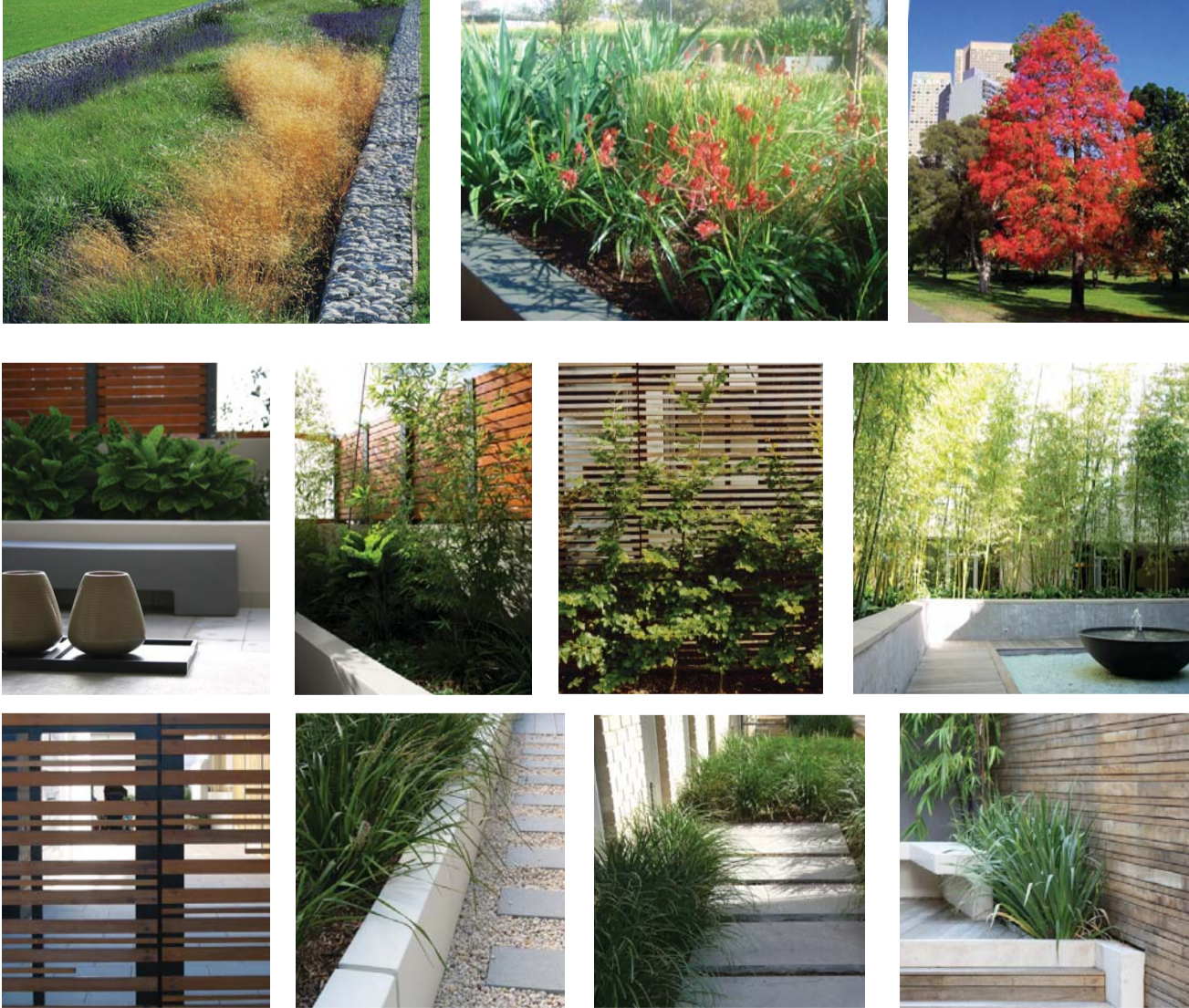
STREETSCAPE

- Hardworks**
  - High quality unit paving provided to highlight entry points
  - Tiles feature walls to provide element of public art, signifying entry points and accommodating wayfinding signage
  - Vehicular entries treated as shared zone to allow for pedestrian use of space
- Planting**
  - Bands of planting providing a green buffer between building and footpaths
  - Planting of different colour, texture and flowers used to animate the streetscape experience
  - Small flowering trees used to highlight the main entry point on King Street



PRIVATE TERRACES

- Private terraces**
  - Paved private landscaped zone for ground floor apartments
  - Private terraces to include areas for planting and low palisade fences at periphery for security and privacy.



Moore Theological College | Newtown