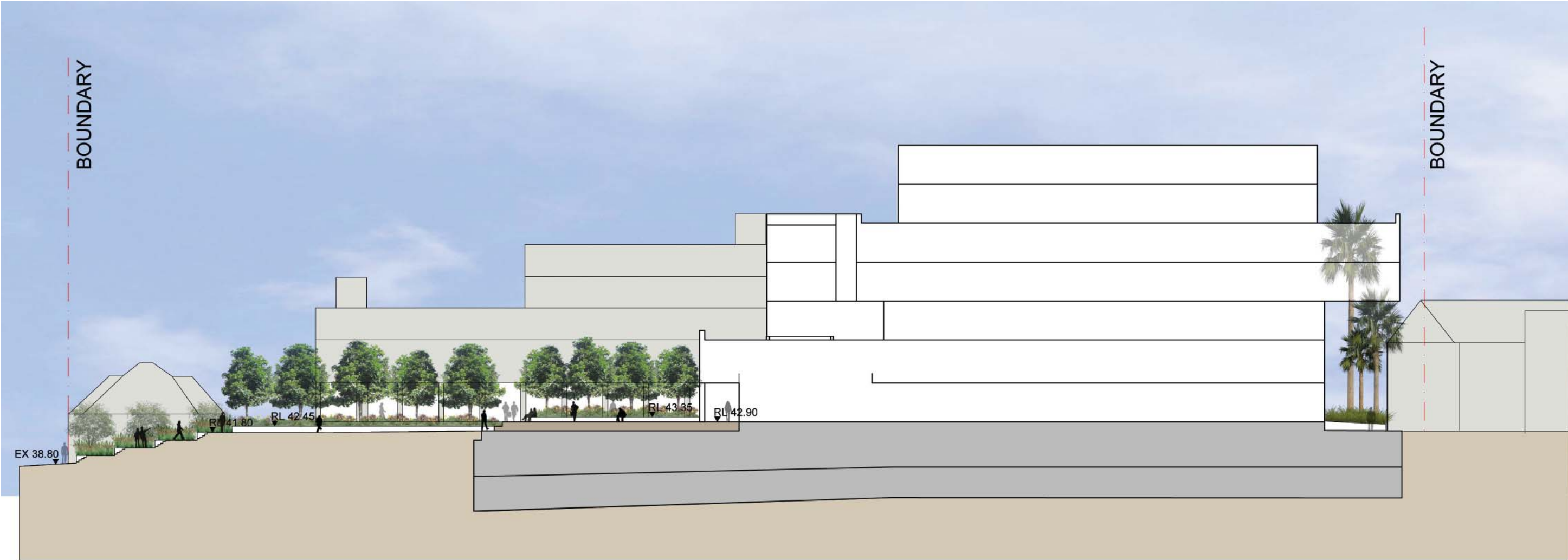
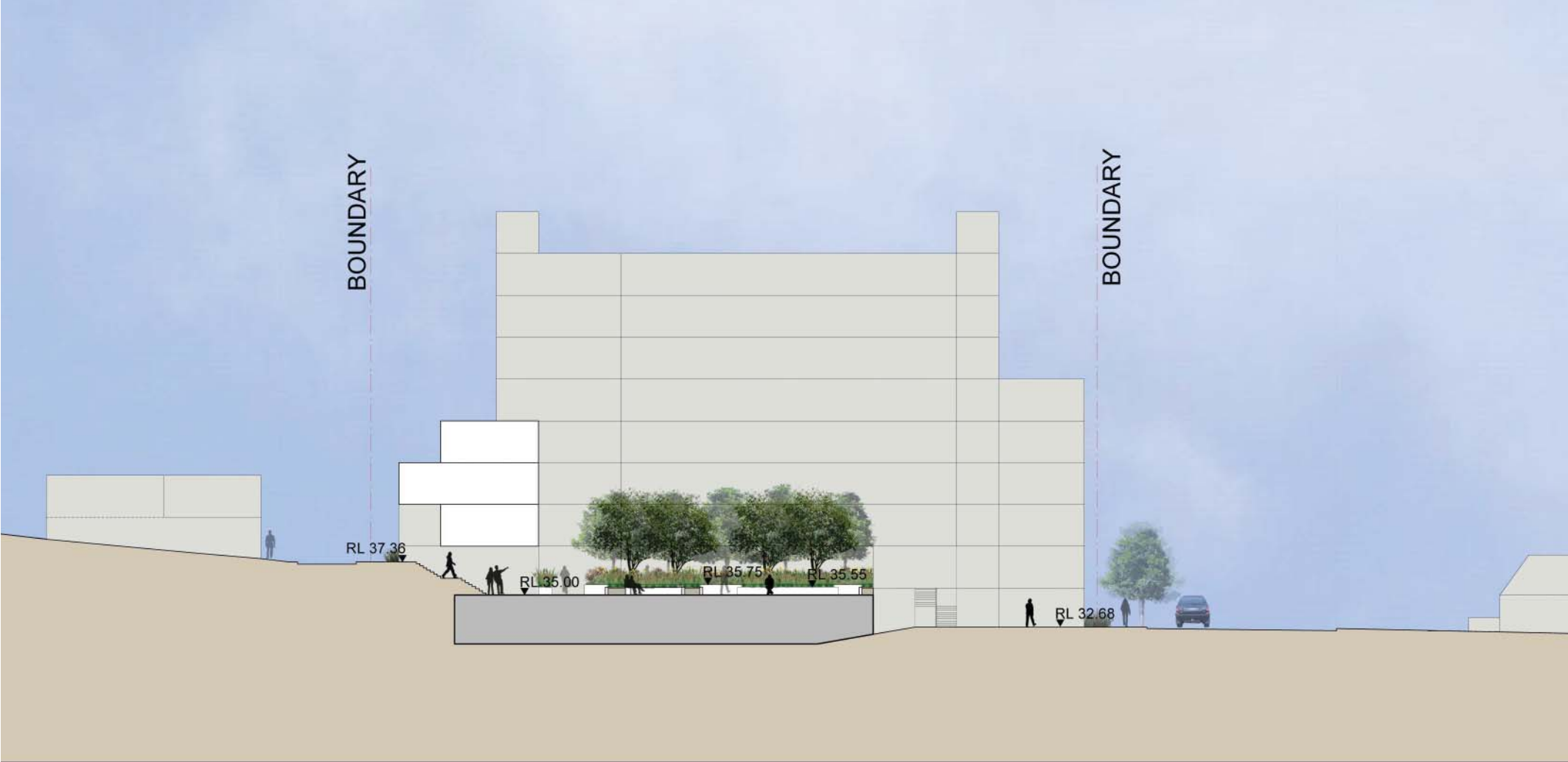




CONCEPT MASTER PLAN



SECTION A-A



SECTION B-B

- KEY**
- STREETSCAPE - Carillon Ave**
- Unit paving to entry fore courts
 - Unit paving across driveway entry to basement carpark creating a shared zone. Vehicular path of travel to be delineated using bollards
 - Proposed tree plantings - *Lophostemon confertus*
 - Existing street trees retained in turf verge
 - Proposed street trees in turf verge
 - In situ concrete footpath - Carillon Ave
 - Proposed planting beds along street frontage with bands of native grasses, ground covers and shrubs including *Westringia fruticosa*, *Anigozanthus 'Regal Velvet'*, *Myoporum parvifolium*, *Acacia cognata 'Limelight'*
 - Proposed tiled feature walls at entry points with possible wayfinding signage
 - Existing concrete driveway crossover
 - Proposed concrete driveway crossover
 - Paved tilted plane with relocated palms - *Washingtonia* Sp.
- STREETSCAPE - King Street**
- Unit paving to entry fore courts
 - Planting beds to periphery of retained terrace houses containing hardy native grasses and groundcovers such as *Anigozanthus 'Ruby Velvet'*, *Phormium cookianum* and *Dianella caerulea 'Breeze'*
 - Proposed tree planting - *Brachychiton acerifolius*
 - Proposed Street tree planting in accordance with City of Sydney Street Tree Master Plan 2004 - *Platanus X hybrida*
 - Asphalt footpath - King Street
 - Existing bus stop
- SITE A - College Green**
- Paved stair access from Little Queen Street
 - Raised terraced planters with understorey planting containing *Beschorneria yuccoides*, *Phormium tenax*, *Doryanthes palmerii* and *Myoporum parvifolium*
 - Paved colonnade with direct access to surrounding buildings.
 - Raised concrete planters containing evergreen trees and flowering understorey planting such as *Anthropodium climatum*, *Ajuga reptans*, *Catlin's Giant* and *Dianella 'Silver Streak'*. Informal concrete seating provided at planter edges.
 - Decomposed granite spill out zone for large gatherings with evergreen shade canopy trees.
 - Timber bench seating to accommodate a variety of used ie: informal study areas and opportunities for baby changing.
 - Lawn for informal active games
 - Access stairs to lawn
 - 450mm high seating stairs at periphery of lawn.
 - Wide concrete steps / daybeds with strips of understorey planting
 - Raised planter (+RL 42.90) with large deciduous feature tree and understorey planting including *Phormium tenax*, *Anigozanthus 'Ruby Velvet'* and *Banksia spinulosa 'Birthday candles'*
 - Decomposed granite path
 - Screen planting of bamboo around periphery of private terraces
 - Evergreen screening trees to western boundary edge of lawn with understorey planting including *Lomandra longifolia 'Tanika'*, *Asplenium australasicum* and *Viola hederacea*
 - Lift access from basement carpark below
- SITE B - Residential Courtyard**
- Paved circulation paths
 - Raised planting beds some with wide seating edges
 - Lawn / children's play
 - Children's play space with timber balance beams and play elements with native grasses
 - Communal gathering space with raised timber deck with seating and BBQ facilities
 - Timber deck / spillout zone from adjacent community room
 - Evergreen screening trees
 - Large evergreen feature tree
 - Gated access from surrounding streets
 - Decomposed granite circulation space
 - Waterfeature
 - Private terraces
 - Access path from fire stairs
- SITE C - Residential Terraces**
- Existing outdoor terrace spaces associated with each individual home
 - Existing communal green space to be retained
 - Access path from street
- BUILDINGS**
- Proposed Buildings
 - Existing Buildings to be retained
- TREES**
- Existing trees to be removed
 - Proposed Trees
 - Existing trees retained

Moore Theological College | Newtown