



PROJECT ID S70118  
CREATED BY TO  
LAST MODIFIED TO 23 04 2010

**AECOM**  
www.aecom.com



AECOM does not warrant the accuracy or completeness of information displayed in this map and any person using it does so at their own risk. AECOM shall bear no responsibility or liability for any errors, faults, defects, or omissions in the information.

- M2 Motorway alignment
- 100m Buffer area
- AHIMS site search boundary (1km)
- NPWS Estate
- River/Creekline
- Main Road
- M2 Motorway lease boundary
- Cleared area
- Sediment basin works
- Temporary clearing
- General AHIMS site location

- Axe Grinding Grooves
- Isolated Find
- Open Camp Site
- PAD
- Rock Engravings
- Shelter with Art
- Shelter with Deposit
- Shelter with Midden
- Unknown

## M2 Motorway Aboriginal Heritage Constraints Mapping - Eastern Section

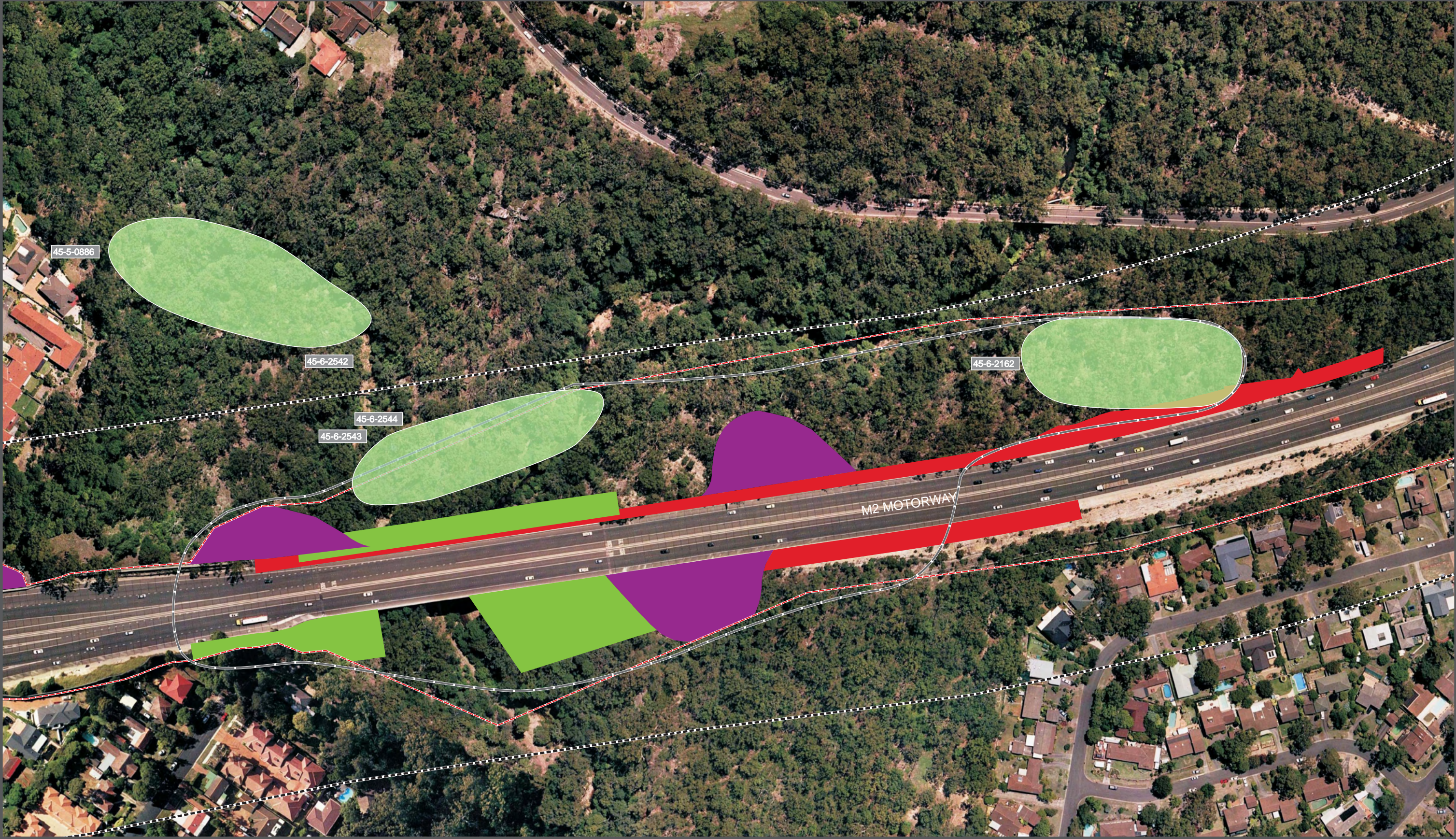
NSW Roads and Traffic Authority  
Preliminary Heritage Assessment:  
M2 Upgrade Project  
Lane Cove Road to Windsor Road  
Sydney, NSW

Figure  
**F6**



*"This page has been left blank intentionally"*





PROJECT ID 60143257  
CREATED BY TO  
LAST MODIFIED TO 23 04 2010

**AECOM**  
www.aecom.com



- 100m Buffer area
- Area 1 Boundary
- ... M2 Motorway lease boundary
- Cleared area
- Sediment basin works
- Temporary clearing
- General AHIMS site location

AECOM does not warrant the accuracy or completeness of information displayed in this map and any person using it does so at their own risk. AECOM shall bear no responsibility or liability for any errors, faults, defects, or omissions in the information.

**Recorrected AHIMS Site Locations**  
**45-6-2543, 45-6-2544 and 45-6-2162**

**NSW Roads and Traffic Authority**  
*Preliminary Heritage Assessment:*  
*M2 Upgrade Project*  
Lane Cove Road to Windsor Road  
Sydney, NSW

**Figure**  
**F7**



*"This page has been left blank intentionally"*