

Appendix B

Vegetation Mapping



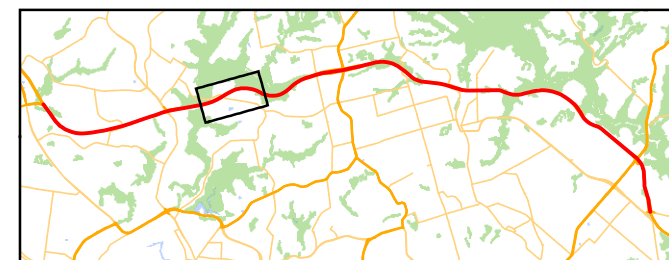
Predictive Vegetation Mapping (from datasets) and Impact Extents
Map 1 of 10



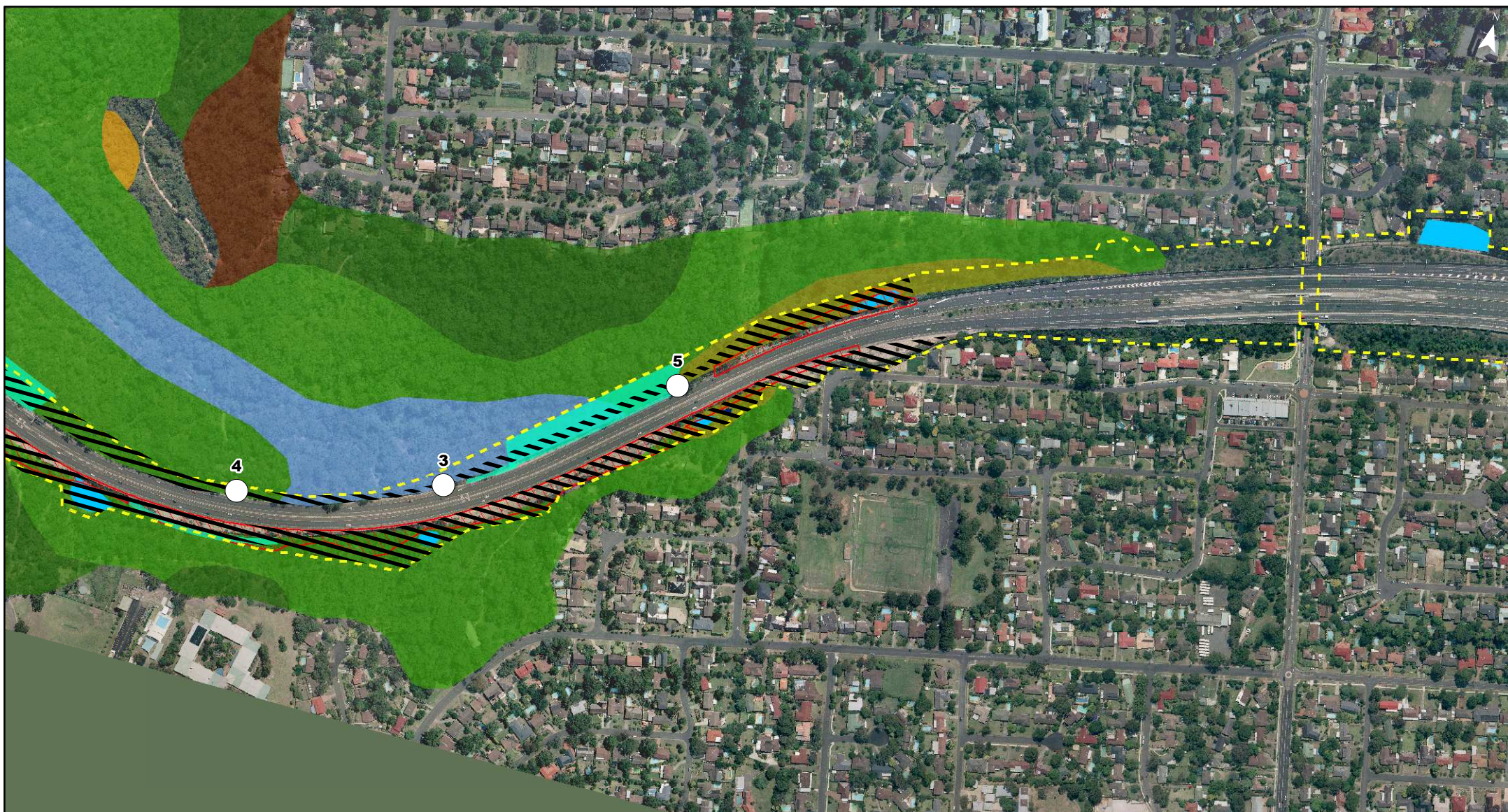
Source: RTA (2009). Based on raw data from Tozer et al (2006). Boundaries may differ slightly from original data.



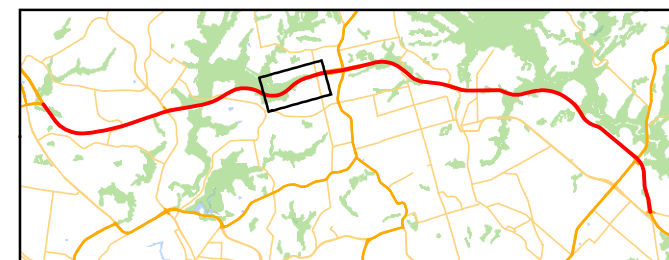
Predictive Vegetation Mapping (from datasets) and Impact Extents
Map 2 of 10



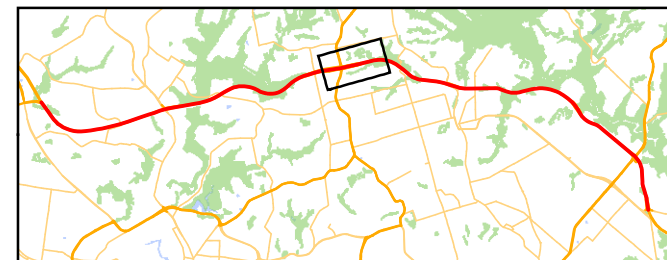
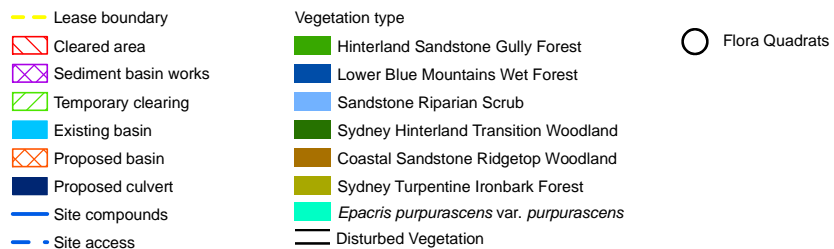
Source: RTA (2009). Based on raw data from Tozer et al (2006). Boundaries may differ slightly from original data.



Predictive Vegetation Mapping (from datasets) and Impact Extents
Map 3 of 10



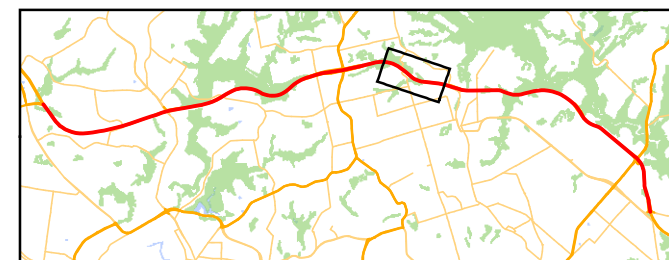
Source: RTA (2009). Based on raw data from Tozer et al (2006). Boundaries may differ slightly from original data.



Source: RTA (2009). Based on raw data from Tozer et al (2006). Boundaries may differ slightly from original data.



Predictive Vegetation Mapping (from datasets) and Impact Extents
Map 5 of 10



Source: RTA (2009). Based on raw data from Tozer et al (2006). Boundaries may differ slightly from original data.