

## **MUSHROOM SUBSTRATE PLANT, MULGRAVE APPLICATION TO MODIFY APPROVALS FOR PROJECT AND CONCEPT PLAN (08\_0255 MOD 1) MODIFIED DIAGRAMS**

Two figures contained in the environmental assessment have been modified. The modified versions of Figure 2 – *Existing and Approved Development*, and Figure 6 – *Revised Staging Plan* are attached.

The changes to the figures are as follows:

### **Figure 2**

1. Identify the existing bale wetting area (requested by DoPE)

### **Figure 6**

1. Show the location of all external conveyors (requested by DoPE)
2. Indicate the new use of the current pre-wet shed (requested by DoPE)
3. Advance the raw materials enclosure to Stage 2A (for emissions control)
4. Advance construction of some Phase 2/3 tunnels to Stages 2A or 2B (amended by Elf Farm Supplies)

The sequence of construction of Phase 2/3 tunnels has been amended by Elf Farm Supplies for the following reasons:

- the benefits of having a longer residence time for the product in Phase 2 and 3 processing as described in the EA will be achieved at an earlier point in time;
- completing some of the tunnels of the No 2 building allows part of the No 1 building to be taken off line for internal refurbishment including additional emission control equipment;
- The additional tunnels will be needed by the time production reaches the currently approved limit of 1600 tonnes per week.
- This work is far enough removed from the biofilter and plantroom installation that both projects can proceed simultaneously without significant interaction. The area will become busier when the pre-wet tunnels are under construction;

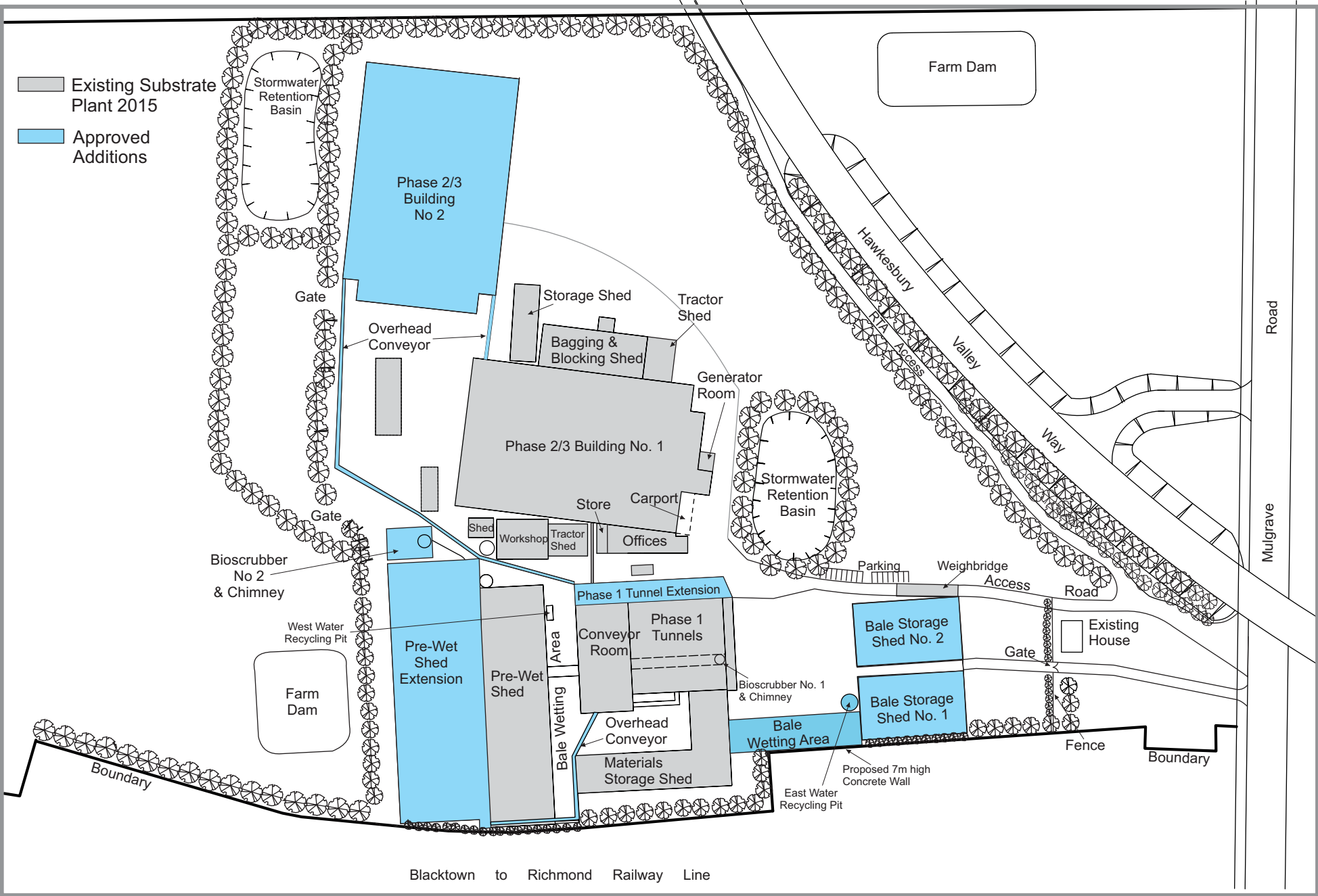


FIGURE 2 Existing and Approved Development



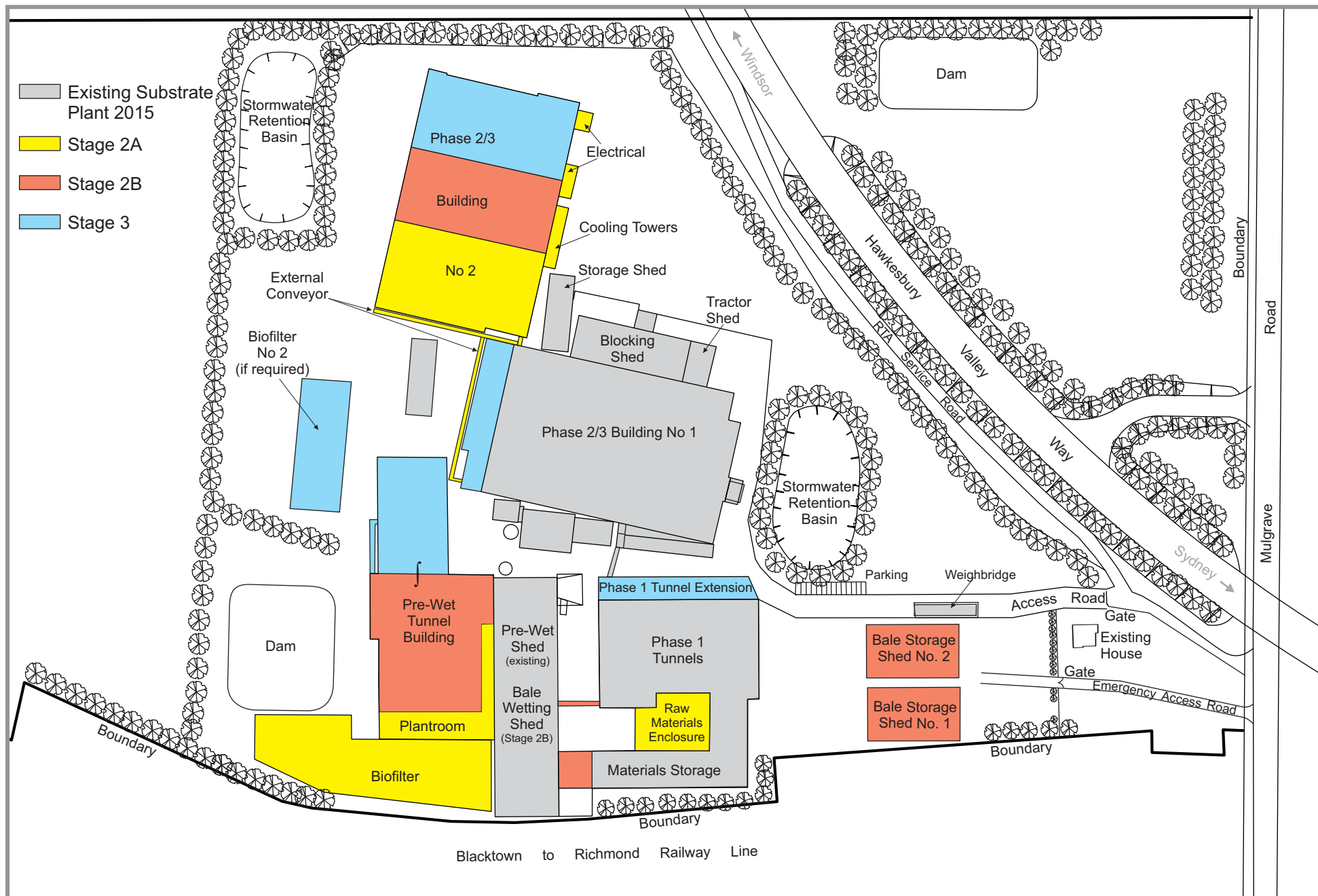


FIGURE 6 Revised Staging Plan