

Appendix F

Power Line Photographs

Appendix F: Power Line Photographs

Figure F1: Location of Photographs

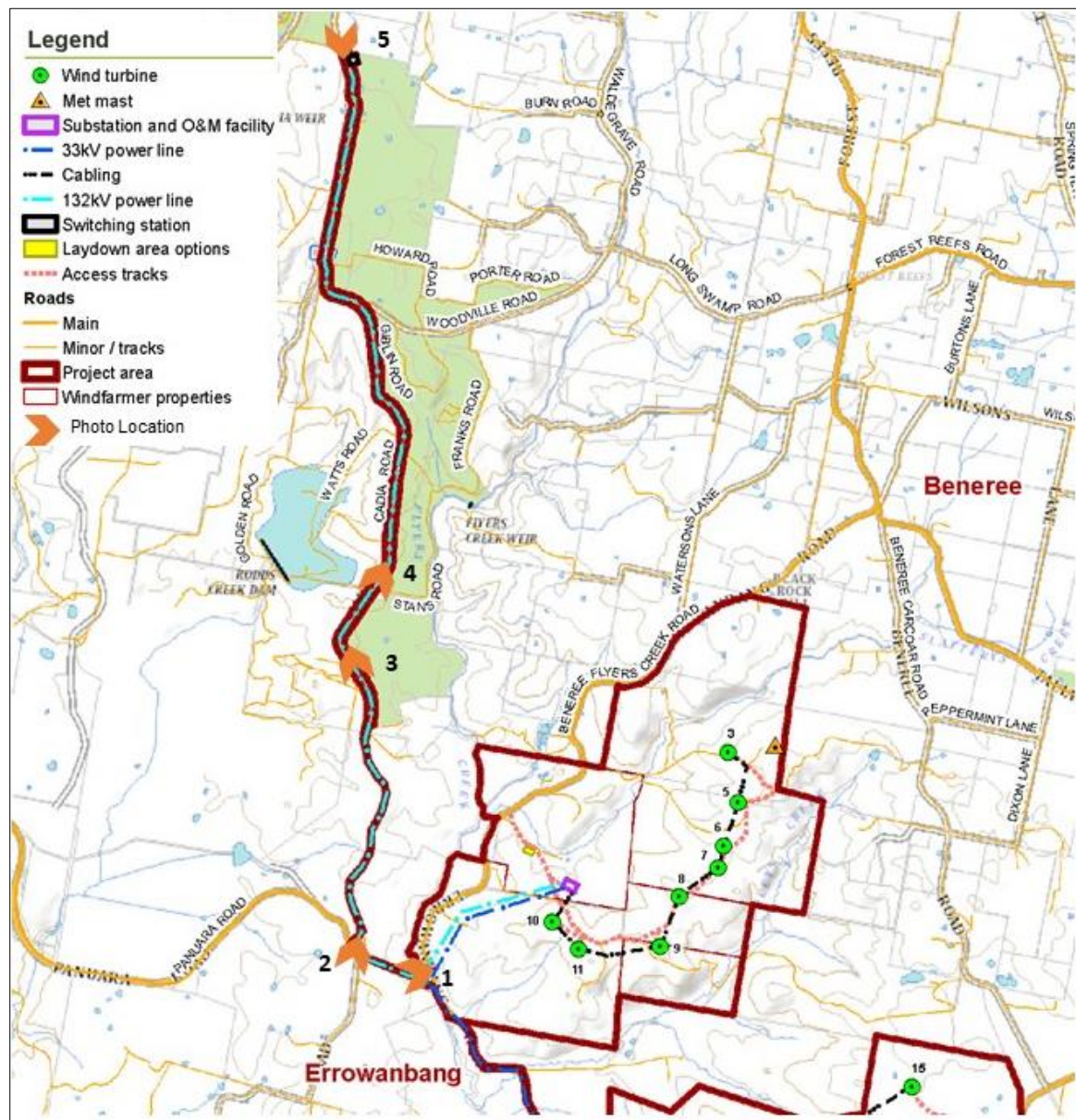


Photo F1: View from Panuara Road looking east across Flyers Creek towards Errowanbang Road. Power line would be located on higher ground and travel between 2 clumps of trees towards the Errowanbang Road then travel across the creek.



Photo F2: View from Panuara Road looking north east up Cadia Road. Power line would be located on northern side of Panuara Road and eastern side of Cadia Road on this corner.



Photo F3: View from Cadia Road looking north east at Forestry plantation on eastern side of Cadia Road. Power line would be located in forestry plantation on eastern side of road.



Photo F4: View from Cadia Road looking north east. Power line would be located in forestry plantation on eastern side of road.



Photo F5: View from Cadia Road looking south at existing Orange North to Cadia Power Line. The switching station would be located in the forestry plantation on the eastern side of Cadia Road (left hand side of the road in this photograph).



Please also refer to Appendix D, Biodiversity Development Assessment Reports for additional photographs of the power line corridor.