

HMRI ARCHITECTURAL DESIGN STATEMENT

THE HUNTER MEDICAL RESEARCH INSTITUTE
NEWCASTLE NSW

ISSUE

15/09/09



PREPARED BY
S2F PTY LTD
DENTON CORKER MARSHALL PTY LTD
Architects in Association

REVISION HISTORY

Revision	Date	Author	Checked	Reason for Issue
Draft 1	15July2009	AC	WP	Site Planning and Design Philosophy issued to Urban Design Consolidations Group.
Draft 2	24 July2009	AC	JS, WP	
Draft 3	30 July2009	AC	WP	EAR Report
Final	24 Aug2009	AC	WP	EAR Report
Final	25 Aug2009	AC	WP	EAR Report
Final	15Sept2009	AC	WP	Page 28 revised

S2F Pty Ltd
 ABN 68 685 634 275
 Level 1, Building 1
 21-31 Goodwood Street
 PO Box 89
 Richmond VIC 3121
 Australia
 T +61 3 8456 4800
 F +61 3 8456 4899
 E melb@s2f.com.au
 www.s2f.com.au

Denton Corker Marshall
 ABN 846 150 19443
 49 Exhibition Street
 Melbourne VIC 3000
 Australia

T +61 3 9012 3600
 F +61 3 9012 3601
 E melb@dentoncorkermarshall.com.au
 www.dentoncorkermarshall.com.au

TABLE OF CONTENTS

1	INTRODUCTION.....	4
2	SITE ANALYSIS AND PLANNING	5
3	DESIGN PHILOSOPHY / APPROACH.....	18
4	FLOOR SPACE CALCULATIONS.....	22
5	REGULATORY APPROACH	23
6	ESD INITIATIVES	24
7	EXTERNAL MATERIALS AND FINISHES	25
8	URBAN DESIGN	27
9	VIEW ANALYSIS AND PHOTOMONTAGES.....	29
10	SHADOW DIAGRAMS	31

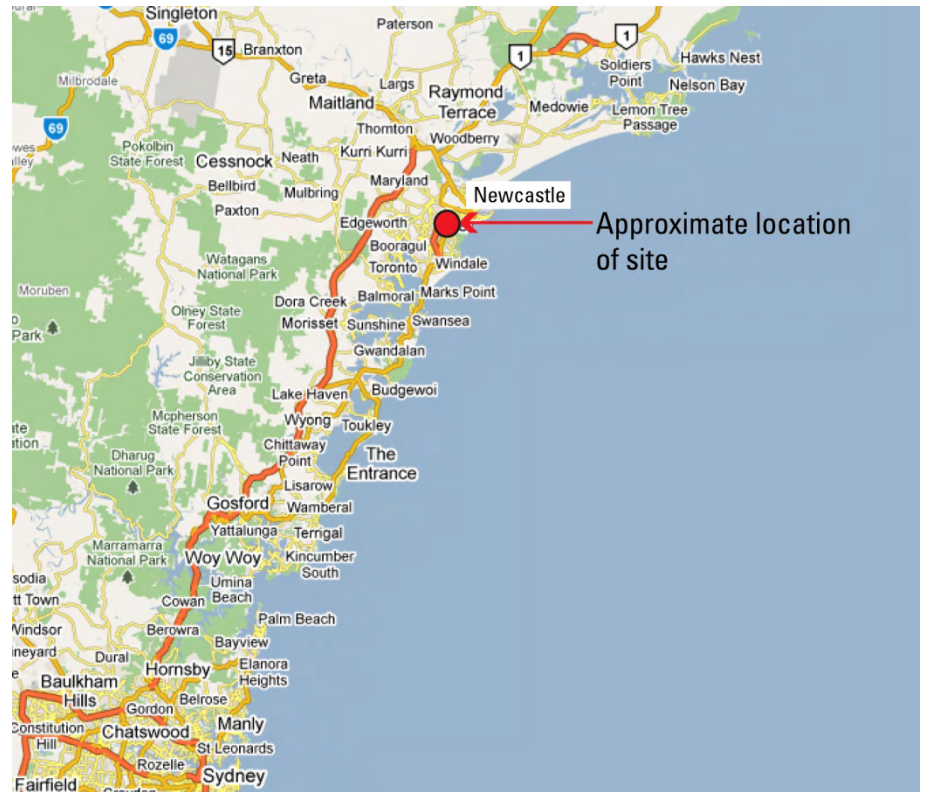
1.1 Introduction

This Architectural Design Statement reflects the outcome of the continued engagement between the Hunter Medical Research Institute (HMRI) and the Design Team, in the design of a new HMRI facility on the Rankin Park Campus in Newcastle, NSW.

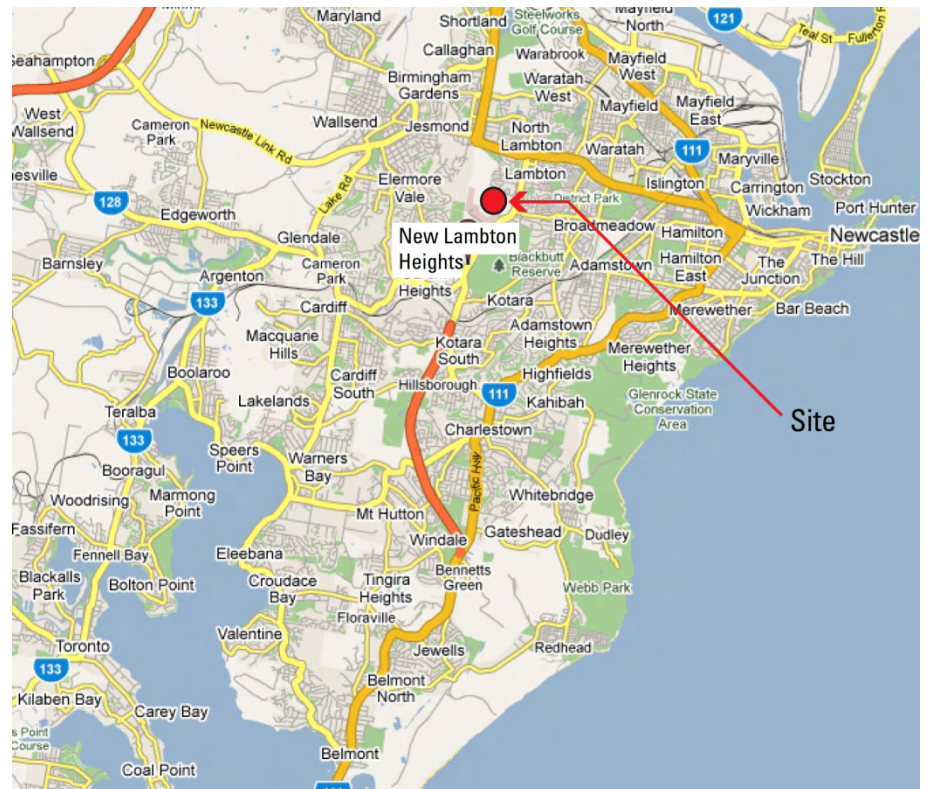
HMRI is a multi-campus institute that fosters and enables research collaboration between multidisciplinary teams across institutions and geographic sites, coordinates research activity and resource distribution for the Hunter region with close links to the local community.

The construction of this new Research Facility is part of the vision of HMRI to consolidate health and medical research in the greater Newcastle area onto three major campuses – Rankin Park (John Hunter Hospital / Royal Newcastle Centre), Waratah (Calvary Mater Newcastle) and Callaghan (University of Newcastle).

2.1 The Site



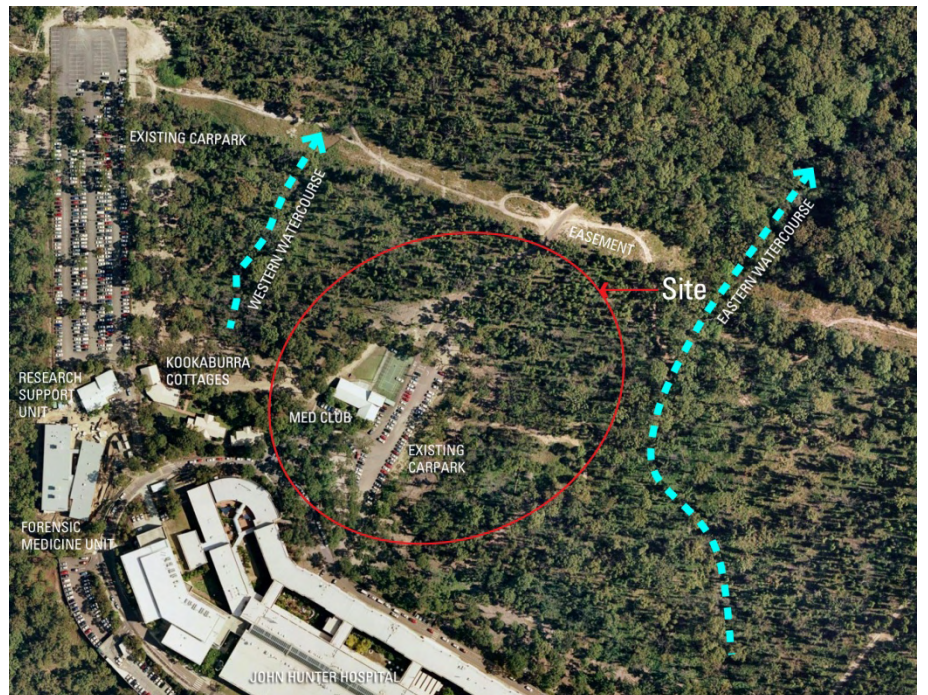
Locality Plan – Regional Context



Locality Plan – Newcastle Context



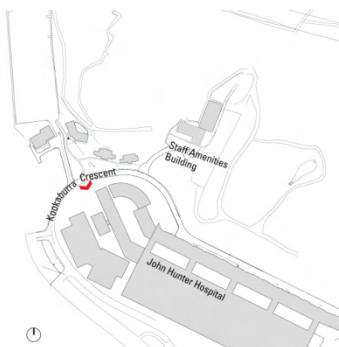
Aerial View – Proposed HMRI Building Site



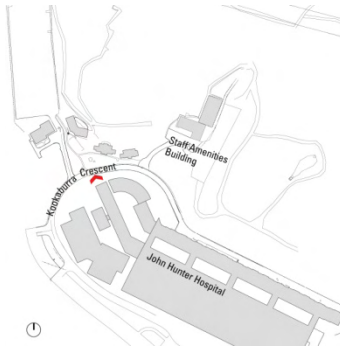
Aerial View – Proposed HMRI Building Site – Existing Site Context



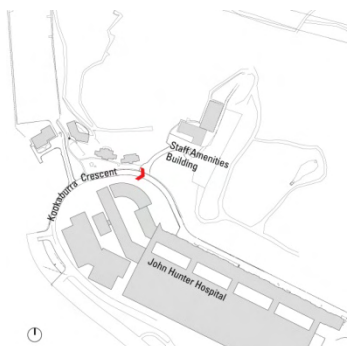
Photograph 1: View of John Hunter Hospital from Kookaburra Circuit.



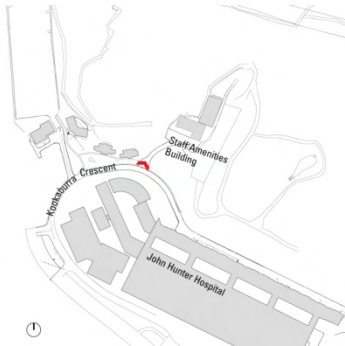
Photograph 2: View of pedestrian ramp in front of John Hunter Hospital from Kookaburra Circuit.



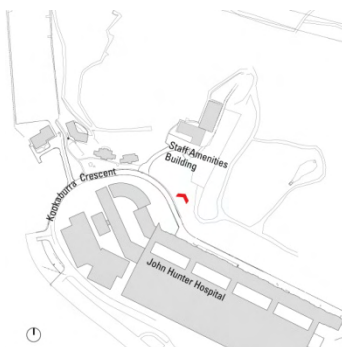
Photograph 3: View of Yallarwah and Kookaburra Cottages from Kookaburra Circuit.



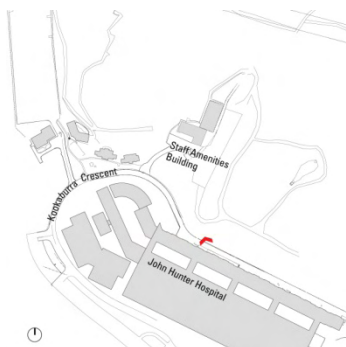
Photograph 4: View of John Hunter Hospital and existing car park entry from Kookaburra Circuit.



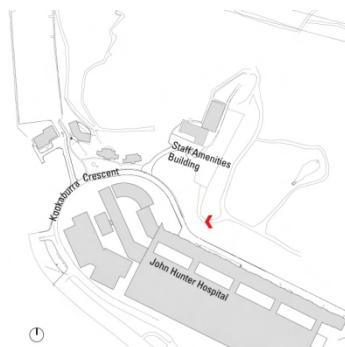
Photograph 5: View of car park entry to the Staff Amenities Building from Kookaburra Circuit.



Photograph 6: Closer view of the Staff Amenities Building (Club Med) and car park.



Photograph 7: View towards proposed HMRI building site from Kookaburra Circuit



Photograph 8: View of John Hunter Hospital from proposed HMRI car park.