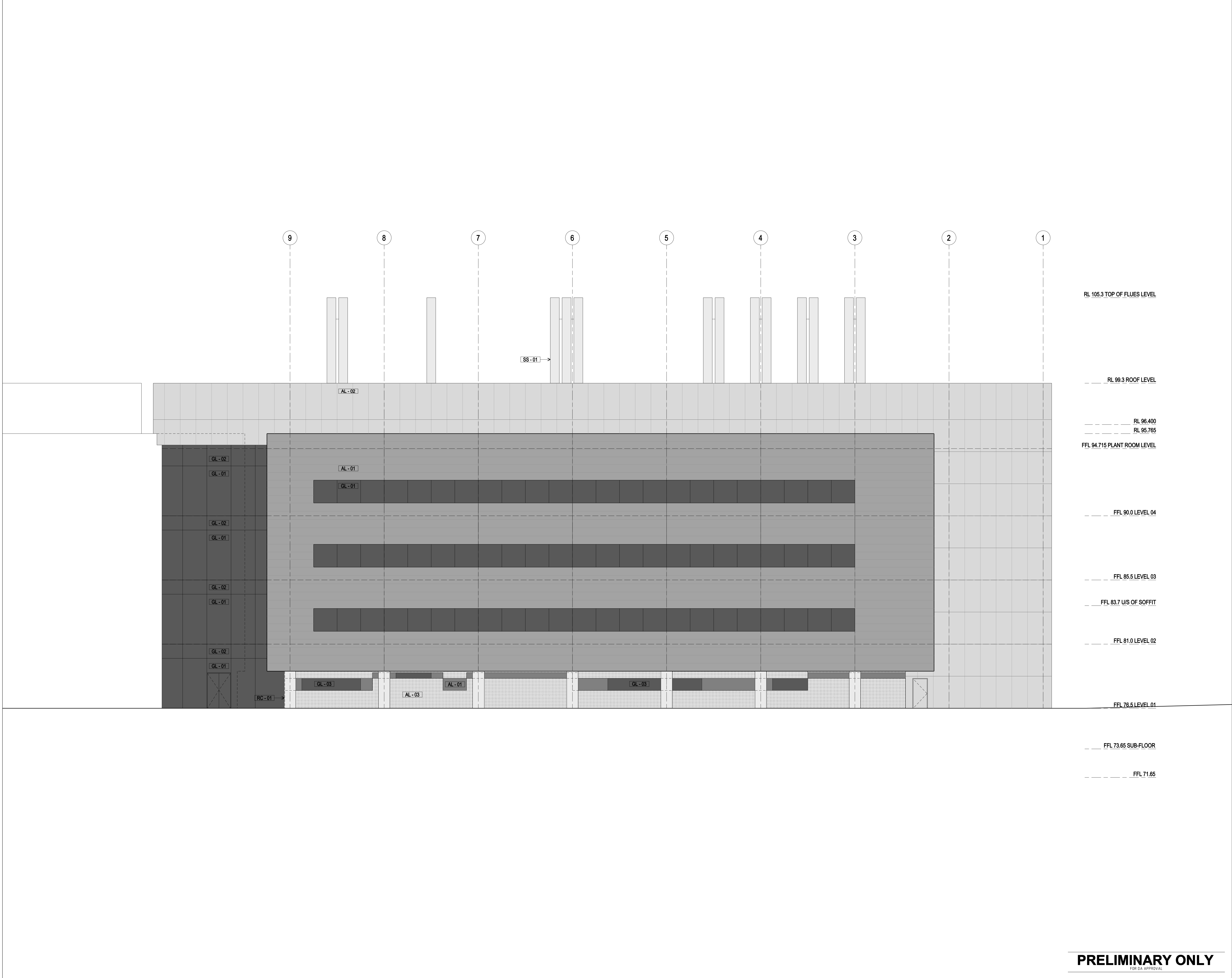


THIS DRAWING IS COPYRIGHT AND THE PROPERTY OF THE CONSULTANT AND MUST NOT BE RETAINED, COPIED OR USED WITHOUT THE PERMISSION OF THE AUTHOR. ALL DIMENSIONS MUST BE CHECKED ON SITE BEFORE COMMENCEMENT OF ANY WORK AND DISCREPANCIES IMMEDIATELY REPORTED TO THE CONSULTANT FOR INTERPRETATION. THIS DRAWING IS TO BE READ IN CONJUNCTION WITH THE OTHER DRAWINGS IN THIS SET AND WITH THE PROJECT SPECIFICATIONS. DO NOT SCALE FROM DRAWINGS. REFER TO GIVEN DIMENSIONS. VARIATIONS TO WORK SHOWN MUST BE CLAIMED AND APPROVED IN WRITING BEFORE PROCEEDING.

MATERIAL CODE	
GL - 01	DOUBLE GLAZED VISION PANEL
GL - 02	SINGLE GALZED SPANDREL PANEL
GL - 03	DOUBLE GLASS ASSEMBLY
AL - 01	ALUMINIUM COMPOSITE PANEL
AL - 02	PERFORATED SOLID ALUMINIUM PANEL
AL - 03	PERFORATED ALUMINIUM PROFILE
AL - 04	ROLLER SHUTTER
RC - 01	REINFORCED FAIR FACED CONCRETE (PIGMENTED)
CR - 01	CEMENT RENDER (PIGMENTED) OVER BLOCK WORK
SS - 01	STAINLESS STEEL



2	06.08.09	ISSUED FOR INFORMATION	SY	WP	
1	06.08.09	ISSUED FOR INFORMATION	SY	WP	
REV	DATE	DESCRIPTION	BY	APP	

DRAWN	DESIGNED	CHECKED
SY		DM

KEY PLAN



CONSULTANTS

Architecture
Engineering
Planning
Project Management
S2F Pty Ltd
ACN 055 430 988
Level 1, Building 1
21-31 Goodwood Street
PO Box 99
Richmond 3121 Victoria
T +61 3 9468 4800
F +61 3 9468 4880
E melb@s2f.com.au

Denton Corker Marshall
architecture and urban design

QUANTITY SURVEYOR

DAVIS LANGDON
Level 5
101 Pacific Highway
North Sydney NSW 2060
Tel 02 9550 8822
Fax 02 9550 8848

Davis Langdon

PROJECT DIRECTOR & PROJECT MANAGER

APP CORPORATION PTY LIMITED
1/4, 8 Newcomen St
Newcastle NSW 2300
Tel 02 4928 7900

APP

CLIENT

HUNTER MEDICAL RESEARCH INSTITUTE



PROJECT

HUNTER MEDICAL RESEARCH INSTITUTE

JOHN HUNTER HOSPITAL
RANKIN PARK CAMPUS
NEWCASTLE NSW

DRAWING TITLE
**WEST WING
REFERENCE PLAN
NORTH ELEVATION**

PATH NAME	WW_A_ELNN	FILED	7347	REVISION	
DRAWING No	730111	SCALE @ B1	1:100 @ B1	DATE	7/08/2009
					2

THIS DRAWING IS COPYRIGHT AND THE PROPERTY OF THE CONSULTANT AND MUST NOT BE RETAINED, COPIED OR USED WITHOUT THE PERMISSION OF THE AUTHOR. ALL DIMENSIONS MUST BE CHECKED ON SITE BEFORE COMMENCEMENT OF ANY WORK AND DISCREPANCIES IMMEDIATELY REPORTED TO THE CONSULTANT FOR INTERPRETATION. THIS DRAWING IS TO BE READ IN CONJUNCTION WITH THE OTHER DRAWINGS IN THIS SET AND WITH THE PROJECT SPECIFICATIONS. DO NOT SCALE FROM DRAWINGS. REFER TO GIVEN DIMENSIONS. VARIATIONS TO WORK SHOWN MUST BE CLAIMED AND APPROVED IN WRITING BEFORE PROCEEDING.

MATERIAL CODE	
GL - 01	DOUBLE GLAZED VISION PANEL
GL - 02	SINGLE GALZED SPANDREL PANEL
GL - 03	DOUBLE GLASS ASSEMBLY
AL - 01	ALUMINIUM COMPOSITE PANEL
AL - 02	PERFORATED SOLID ALUMINIUM PANEL
AL - 03	PERFORATED ALUMINIUM PROFILE
AL - 04	ROLLER SHUTTER
RC - 01	REINFORCED FAIR FACED CONCRETE (PIGMENTED)
CR - 01	CEMENT RENDER (PIGMENTED) OVER BLOCK WORK
SS - 01	STAINLESS STEEL

2	07.08.09	ISSUED FOR INFORMATION	MP	W/P	
1	25.06.09	ISSUED FOR INFORMATION	SY	W/P	
REV	DATE	DESCRIPTION	BY	APP	

DRAWN	DESIGNED	CHECKED
SY		DM

KEY PLAN



CONSULTANTS

Architecture
Engineering
Planning
Project Management

S2F Pty Ltd
ACN 055 430 388
Level 1, Building 1
21-31 Goodwood Street
PO Box 99
Richmond 3121 Victoria
T +61 3 9469 4800
F +61 3 9469 4899
E info@s2f.com.au

Denton Corker Marshall
architecture and urban design

QUANTITY SURVEYOR

DAVIS LANGDON
Level 5
100 Pacific Highway
North Sydney NSW 2060
Tel 02 9559 8822
Fax 02 9559 8848

PROJECT DIRECTOR & PROJECT MANAGER

APP CORPORATION PTY LIMITED
U4, 8 Newcomen St
Newcastle NSW 2300
Tel 02 4928 7000

CLIENT

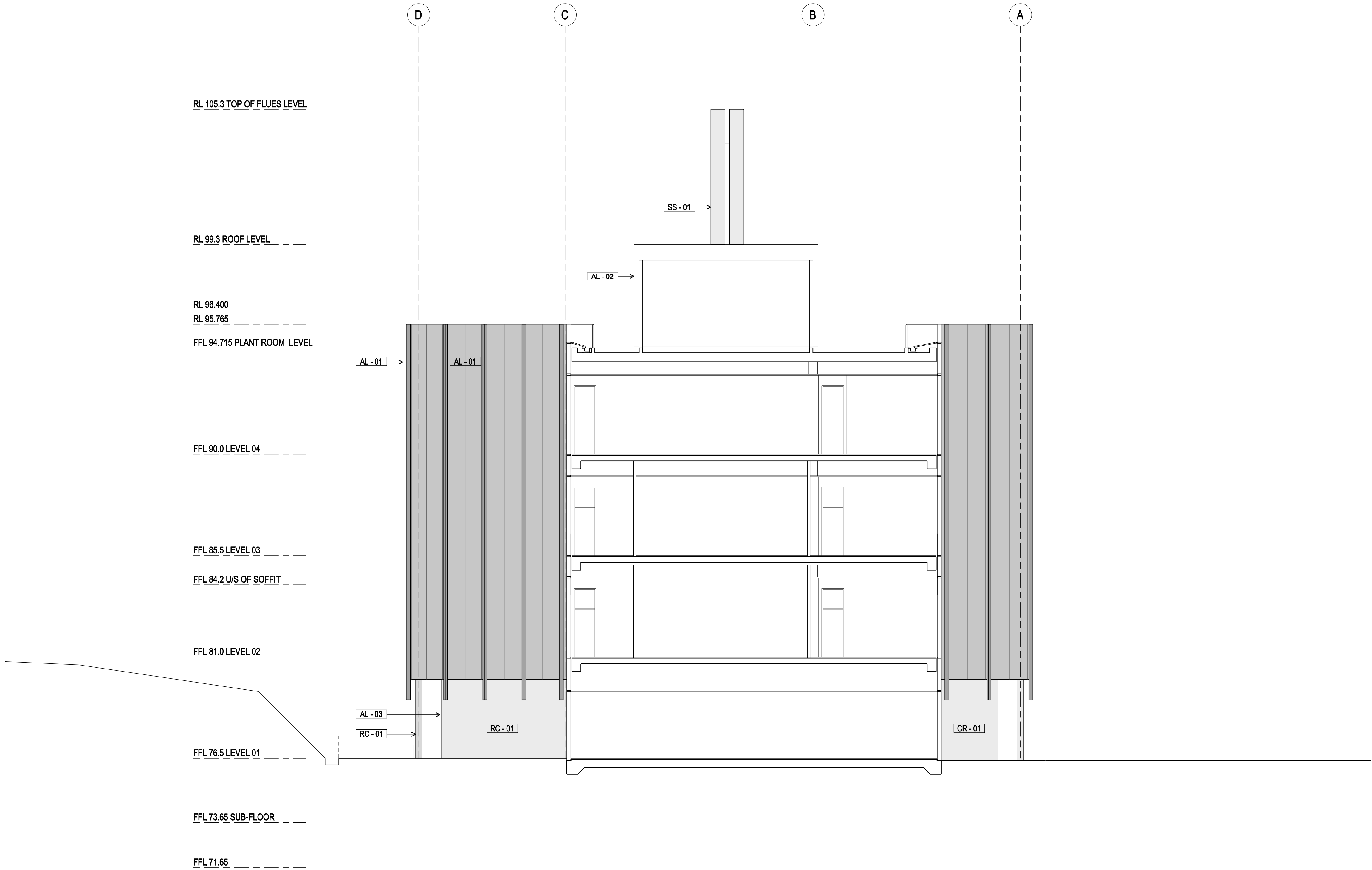
HUNTER MEDICAL RESEARCH INSTITUTE

PROJECT

HUNTER MEDICAL RESEARCH INSTITUTE

JOHN HUNTER HOSPITAL
RANKIN PARK CAMPUS
NEWCASTLE NSW

DRAWING TITLE		
WEST WING		
EAST ELEVATION		
PATH NAME	WW_A_ELEE	REVISION
DRAWING No	T5012	FILED 7347
SCALE @ B1	1:100 @ B1	DATE 7/08/2009
		2



PRELIMINARY ONLY

FOR DA APPROVAL

THIS DRAWING IS COPYRIGHT AND THE PROPERTY OF THE CONSULTANT AND MUST NOT BE RETAINED, COPIED OR USED WITHOUT THE PERMISSION OF THE AUTHOR. ALL DIMENSIONS MUST BE CHECKED ON SITE BEFORE COMMENCEMENT OF ANY WORK AND DISCREPANCIES IMMEDIATELY REPORTED TO THE CONSULTANT FOR INTERPRETATION.

THIS DRAWING IS TO BE READ IN CONJUNCTION WITH THE OTHER DRAWINGS IN THIS SET AND WITH THE PROJECT SPECIFICATIONS. DO NOT SCALE FROM DRAWINGS. REFER TO GIVEN DIMENSIONS.

VARIATIONS TO WORK SHOWN MUST BE CLAIMED AND APPROVED IN WRITING BEFORE PROCEEDING.

MATERIAL CODE	
GL - 01	DOUBLE GLAZED VISION PANEL
GL - 02	SINGLE GALZED SPANDREL PANEL
GL - 03	DOUBLE GLASS ASSEMBLY
AL - 01	ALUMINIUM COMPOSITE PANEL
AL - 02	PERFORATED SOLID ALUMINIUM PANEL
AL - 03	PERFORATED ALUMINIUM PROFILE
AL - 04	ROLLER SHUTTER
RC - 01	REINFORCED FAIR FACED CONCRETE (PIGMENTED)
CR - 01	CEMENT RENDER (PIGMENTED) OVER BLOCK WORK
SS - 01	STAINLESS STEEL

2	07.08.09	ISSUED FOR INFORMATION	MP	W/P	
1	25.06.09	ISSUED FOR INFORMATION	SY	W/P	
REV	DATE	DESCRIPTION	BY	APP	

DRAWN	DESIGNED	CHECKED
SY		DM

KEY PLAN



CONSULTANTS

Architecture
Engineering
Planning
Project Management

S2F Pty Ltd
ACN 055 430 388
Level 1, Building 1
21-31 Goodwood Street
PO Box 99
Richmond 3121 Victoria
T +61 3 9469 4800
F +61 3 9469 4860
E melb@s2f.com.au

Denton Corker Marshall
architecture and urban design

QUANTITY SURVEYOR

DAVIS LANGDON
Level 5
100 Pacific Highway
North Sydney NSW 2060
Tel 02 9550 8522
Fax 02 9550 8548

PROJECT DIRECTOR & PROJECT MANAGER

APP CORPORATION PTY LIMITED
L4, 8 Newcomen St
Newcastle NSW 2300
Tel 02 4928 7000

CLIENT

HUNTER MEDICAL RESEARCH INSTITUTE



PROJECT

HUNTER MEDICAL RESEARCH INSTITUTE

JOHN HUNTER HOSPITAL
RANKIN PARK CAMPUS
NEWCASTLE NSW

DRAWING TITLE

WEST WING

SOUTH ELEVATION

PATH NAME	WW_A_ELSS	FILED	7347	REVISION	
DRAWING No.	T5013	DATE	7/08/2009		2
SCALE @ B1	1:100 @ B1				

PRELIMINARY ONLY

FOR DA APPROVAL

THIS DRAWING IS COPYRIGHT AND THE PROPERTY OF THE CONSULTANT AND MUST NOT BE RETAINED, COPIED OR USED WITHOUT THE PERMISSION OF THE AUTHOR. ALL DIMENSIONS MUST BE CHECKED ON SITE BEFORE COMMENCEMENT OF ANY WORK AND DISCREPANCIES IMMEDIATELY REPORTED TO THE CONSULTANT FOR INTERPRETATION.

THIS DRAWING IS TO BE READ IN CONJUNCTION WITH THE OTHER DRAWINGS IN THIS SET AND WITH THE PROJECT SPECIFICATIONS. DO NOT SCALE FROM DRAWINGS, REFER TO GIVEN DIMENSIONS.

VARIATIONS TO WORK SHOWN MUST BE CLAIMED AND APPROVED IN WRITING BEFORE PROCEEDING.

MATERIAL CODE	
GL - 01	DOUBLE GLAZED VISION PANEL
GL - 02	SINGLE GALZED SPANDREL PANEL
GL - 03	DOUBLE GLASS ASSEMBLY
AL - 01	ALUMINIUM COMPOSITE PANEL
AL - 02	PERFORATED SOLID ALUMINIUM PANEL
AL - 03	PERFORATED ALUMINIUM PROFILE
AL - 04	ROLLER SHUTTER
RC - 01	REINFORCED FAIR FACED CONCRETE (PIGMENTED)
CR - 01	CEMENT RENDER (PIGMENTED) OVER BLOCK WORK
SS - 01	STAINLESS STEEL

2	07.08.09	ISSUED FOR INFORMATION	MP	W/P	
1	25.06.09	ISSUED FOR INFORMATION	SY	W/P	
REV	DATE	DESCRIPTION	BY	APP	

DRAWN	DESIGNED	CHECKED
SY		DM

KEY PLAN



CONSULTANTS

Architecture
Engineering
Planning
Project Management

S2F Pty Ltd
ACN 055 430 388
Level 1, Building 1
21-31 Goodwood Street
PO Box 99
Richmond 3121 Victoria
T +61 3 9469 4800
F +61 3 9469 4899
E info@s2f.com.au

Denton Corker Marshall
architecture and urban design

QUANTITY SURVEYOR

DAVIS LANGDON
Level 5
100 Pacific Highway
North Sydney NSW 2060
Tel 02 9559 8822
Fax 02 9559 8848

PROJECT DIRECTOR & PROJECT MANAGER

APP CORPORATION PTY LIMITED
1/4, 8 Newcomen St
Newcastle NSW 2300
Tel 02 4928 7000

CLIENT

HUNTER MEDICAL RESEARCH INSTITUTE

PROJECT

HUNTER MEDICAL RESEARCH INSTITUTE

JOHN HUNTER HOSPITAL
RANKIN PARK CAMPUS
NEWCASTLE NSW

DRAWING TITLE				REVISION
WEST WING				
WEST ELEVATION				
PATH NAME	WW_A_ELWW	FILED	7347	2
DRAWING No	T5014	DATE	7/08/2009	
SCALE @ B1	1:100 @ B1			

PRELIMINARY ONLY

FOR DA APPROVAL

THIS DRAWING IS COPYRIGHT AND THE PROPERTY OF THE CONSULTANT AND MUST NOT BE RETAINED, COPIED OR USED WITHOUT THE PERMISSION OF THE AUTHOR. ALL DIMENSIONS MUST BE CHECKED ON SITE BEFORE COMMENCEMENT OF ANY WORK AND DISCREPANCIES IMMEDIATELY REPORTED TO THE CONSULTANT FOR INTERPRETATION.

THIS DRAWING IS TO BE READ IN CONJUNCTION WITH THE OTHER DRAWINGS IN THIS SET AND WITH THE PROJECT SPECIFICATIONS. DO NOT SCALE FROM DRAWINGS, REFER TO GIVEN DIMENSIONS.

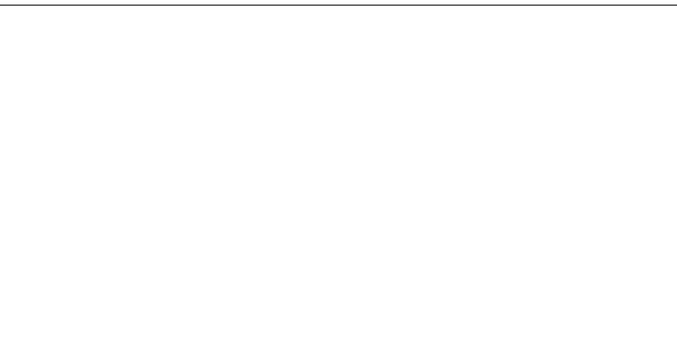
VARIATIONS TO WORK SHOWN MUST BE CLAIMED AND APPROVED IN WRITING BEFORE PROCEEDING.

MATERIAL CODE	
GL - 01	DOUBLE GLAZED VISION PANEL
GL - 02	SINGLE GALZED SPANDREL PANEL
GL - 03	DOUBLE GLASS ASSEMBLY
AL - 01	ALUMINIUM COMPOSITE PANEL
AL - 02	PERFORATED SOLID ALUMINIUM PANEL
AL - 03	PERFORATED ALUMINIUM PROFILE
AL - 04	ROLLER SHUTTER
RC - 01	REINFORCED FAIR FACED CONCRETE (PIGMENTED)
CR - 01	CEMENT RENDER (PIGMENTED) OVER BLOCK WORK
SS - 01	STAINLESS STEEL

2	07.08.09	ISSUED FOR INFORMATION	MP	W/P	
1	25.06.09	ISSUED FOR INFORMATION	SY	W/P	
REV	DATE	DESCRIPTION	BY	APP	

DRAWN	DESIGNED	CHECKED
SY		DM

KEY PLAN



CONSULTANTS

Architecture
Engineering
Planning
Project Management

S2F Pty Ltd
ACN 055 430 388
Level 1, Building 1
21-31 Goodwood Street
PO Box 99
Richmond 3121 Victoria
T +61 3 9469 4800
F +61 3 9469 4899
E melb@s2f.com.au

Denton Corker Marshall
architecture and urban design

QUANTITY SURVEYOR

DAVIS LANGDON
Level 5
100 Pacific Highway
North Sydney NSW 2060
Tel 02 9550 8022
Fax 02 9550 8848

PROJECT DIRECTOR & PROJECT MANAGER

APP CORPORATION PTY LIMITED
L4, 8 Newcomen St
Newcastle NSW 2300
Tel 02 4928 7000

CLIENT

HUNTER MEDICAL RESEARCH INSTITUTE

PROJECT

HUNTER MEDICAL RESEARCH INSTITUTE

JOHN HUNTER HOSPITAL
RANKIN PARK CAMPUS
NEWCASTLE NSW

DRAWING TITLE			
EAST WING			
NORTH ELEVATION			
PATH NAME	EW_A_ELN	FILED	7347
DRAWING No	T5021	DATE	7/08/2009
SCALE @ B1	1:100 @ B1	REVISION	2

PRELIMINARY ONLY

FOR DA APPROVAL

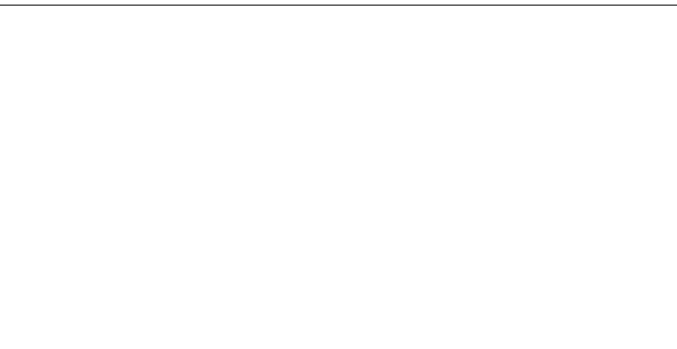
THIS DRAWING IS COPYRIGHT AND THE PROPERTY OF THE CONSULTANT AND MUST NOT BE RETAINED, COPIED OR USED WITHOUT THE PERMISSION OF THE AUTHOR. ALL DIMENSIONS MUST BE CHECKED ON SITE BEFORE COMMENCEMENT OF ANY WORK AND DISCREPANCIES IMMEDIATELY REPORTED TO THE CONSULTANT FOR INTERPRETATION. THIS DRAWING IS TO BE READ IN CONJUNCTION WITH THE OTHER DRAWINGS IN THIS SET AND WITH THE PROJECT SPECIFICATIONS. DO NOT SCALE FROM DRAWINGS. REFER TO GIVEN DIMENSIONS. VARIATIONS TO WORK SHOWN MUST BE CLAIMED AND APPROVED IN WRITING BEFORE PROCEEDING.

MATERIAL CODE	
GL - 01	DOUBLE GLAZED VISION PANEL
GL - 02	SINGLE GALZED SPANDREL PANEL
GL - 03	DOUBLE GLASS ASSEMBLY
AL - 01	ALUMINIUM COMPOSITE PANEL
AL - 02	PERFORATED SOLID ALUMINIUM PANEL
AL - 03	PERFORATED ALUMINIUM PROFILE
AL - 04	ROLLER SHUTTER
RC - 01	REINFORCED FAIR FACED CONCRETE (PIGMENTED)
CR - 01	CEMENT RENDER (PIGMENTED) OVER BLOCK WORK
SS - 01	STAINLESS STEEL

2	07.08.09	ISSUED FOR INFORMATION	MP	W/P	
1	25.06.09	ISSUED FOR INFORMATION	SY	W/P	
REV	DATE	DESCRIPTION	BY	APP	

DRAWN	DESIGNED	CHECKED
SY		DM

KEY PLAN



CONSULTANTS

Architecture
Engineering
Planning
Project Management

S2F Pty Ltd
ACN 085 430 388
Level 1, Building 1
21-31 Goodwood Street
PO Box 99
Richmond 3121 Victoria
T +61 3 9469 4800
F +61 3 9469 4899
E melb@s2f.com.au

Denton Corker Marshall
architecture and urban design

QUANTITY SURVEYOR

DAVIS LANGDON
Level 5
100 Pacific Highway
North Sydney NSW 2060
Tel 02 9559 8822
Fax 02 9559 8848

PROJECT DIRECTOR & PROJECT MANAGER

APP CORPORATION PTY LIMITED
1/4, 8 Newcomen St
Newcastle NSW 2300
Tel 02 4928 7000

CLIENT

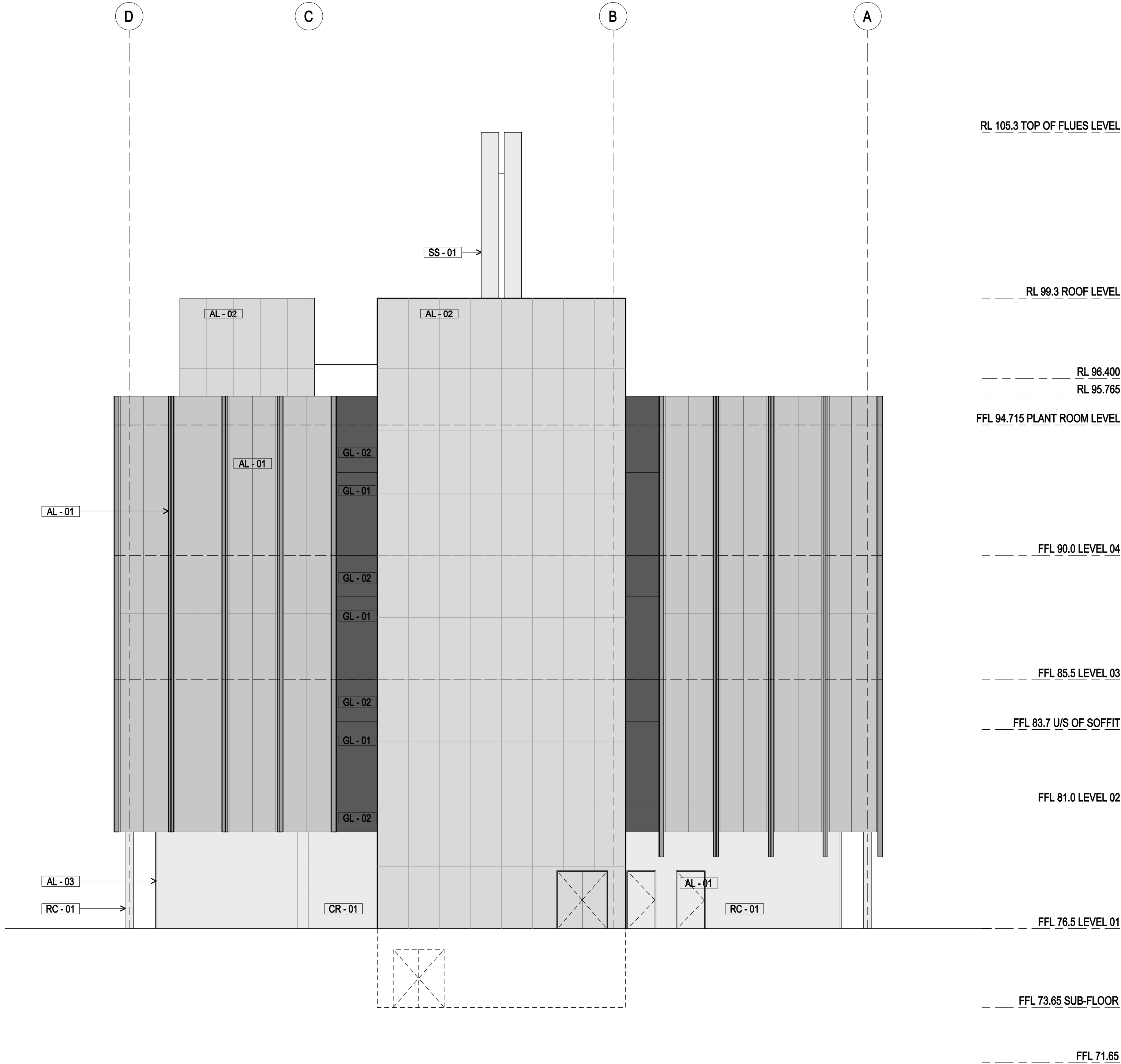
HUNTER MEDICAL RESEARCH INSTITUTE

PROJECT

HUNTER MEDICAL RESEARCH INSTITUTE

JOHN HUNTER HOSPITAL
RANKIN PARK CAMPUS
NEWCASTLE NSW

DRAWING TITLE			
EAST WING			
EAST ELEVATION			
PATH NAME	EW_A_ELEE	REVISION	
DRAWING No	T5022	FILED	7347
SCALE @ B1	1:100 @ B1	DATE	7/08/2009
			2

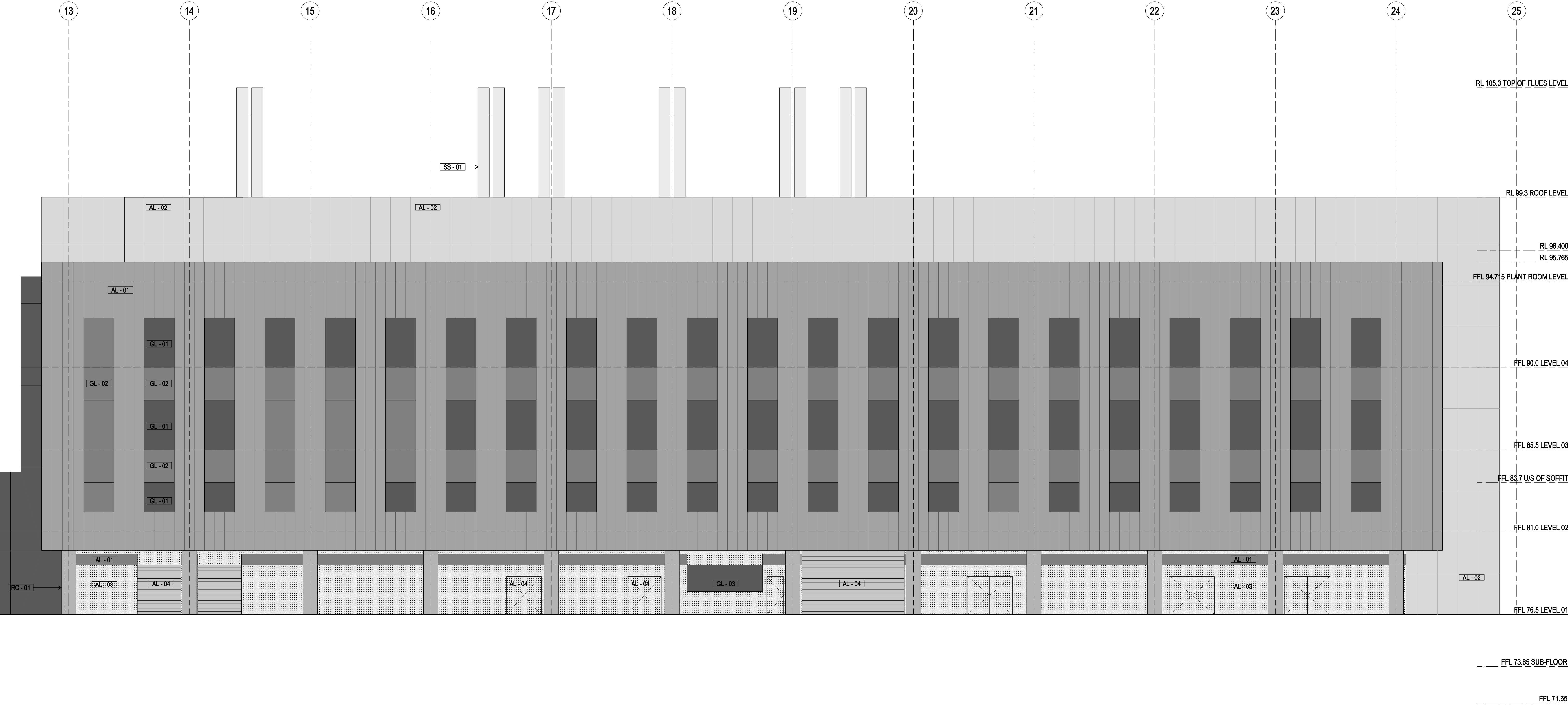


PRELIMINARY ONLY

THIS DRAWING IS COPYRIGHT AND THE PROPERTY OF THE CONSULTANT AND MUST NOT BE RETAINED, COPIED OR USED WITHOUT THE PERMISSION OF THE AUTHOR. ALL DIMENSIONS MUST BE CHECKED ON SITE BEFORE COMMENCEMENT OF ANY WORK AND DISCREPANCIES IMMEDIATELY REPORTED TO THE CONSULTANT FOR INTERPRETATION.

THIS DRAWING IS TO BE READ IN CONJUNCTION WITH THE OTHER DRAWINGS IN THIS SET AND WITH THE PROJECT SPECIFICATIONS. DO NOT SCALE FROM DRAWINGS, REFER TO GIVEN DIMENSIONS.

VARIATIONS TO WORK SHOWN MUST BE CLAIMED AND APPROVED IN WRITING BEFORE PROCEEDING.



MATERIAL CODE	
GL - 01	DOUBLE GLAZED VISION PANEL
GL - 02	SINGLE GALZED SPANDREL PANEL
GL - 03	DOUBLE GLASS ASSEMBLY
AL - 01	ALUMINIUM COMPOSITE PANEL
AL - 02	PERFORATED SOLID ALUMINIUM PANEL
AL - 03	PERFORATED ALUMINIUM PROFILE
AL - 04	ROLLER SHUTTER
RC - 01	REINFORCED FAIR FACED CONCRETE (PIGMENTED)
CR - 01	CEMENT RENDER (PIGMENTED) OVER BLOCK WORK
SS - 01	STAINLESS STEEL

REV	DATE	DESCRIPTION	BY	APP
2	07.08.09	ISSUED FOR INFORMATION	MP	W/P
1	25.06.09	ISSUED FOR INFORMATION	SY	W/P

DRAWN	DESIGNED	CHECKED
SY		DM

KEY PLAN

CONSULTANTS

Architecture
Engineering
Planning
Project Management
S2F Pty Ltd
ACN 055 430 388
Level 1, Building 1
21-31 Goodwood Street
PO Box 99
Richmond 3121 Victoria
T +61 3 9469 4800
F +61 3 9469 4899
E melb@s2f.com.au

S2F
Denton Corker Marshall
architecture and urban design

QUANTITY SURVEYOR

DAVIS LANGDON
Level 5
100 Pacific Highway
North Sydney NSW 2060
Tel 02 9559 8022
Fax 02 9559 8848

Davis Langdon

PROJECT DIRECTOR & PROJECT MANAGER

APP CORPORATION PTY LIMITED
UA, 8 Newcomen St
Newcastle NSW 2300
Tel 02 4928 7000

APP

CLIENT

HUNTER MEDICAL RESEARCH INSTITUTE

HMRI
Hunter Medical Research Institute

PROJECT

HUNTER MEDICAL RESEARCH INSTITUTE

**JOHN HUNTER HOSPITAL
RANKIN PARK CAMPUS
NEWCASTLE NSW**

DRAWING TITLE

EAST WING

SOUTH ELEVATION

PATH NAME	EW_A_ELSS	REVISION
DRAWING No.	T5023	FILED 7347
SCALE @ B1	1:100 @ B1	DATE 7/08/2009
		2

PRELIMINARY ONLY
FOR D.A. APPROVAL

THIS DRAWING IS COPYRIGHT AND THE PROPERTY OF THE CONSULTANT AND MUST NOT BE RETAINED, COPIED OR USED WITHOUT THE PERMISSION OF THE AUTHOR. ALL DIMENSIONS MUST BE CHECKED ON SITE BEFORE COMMENCEMENT OF ANY WORK AND DISCREPANCIES IMMEDIATELY REPORTED TO THE CONSULTANT FOR INTERPRETATION.

THIS DRAWING IS TO BE READ IN CONJUNCTION WITH THE OTHER DRAWINGS IN THIS SET AND WITH THE PROJECT SPECIFICATIONS. DO NOT SCALE FROM DRAWINGS, REFER TO GIVEN DIMENSIONS.

VARIATIONS TO WORK SHOWN MUST BE CLAIMED AND APPROVED IN WRITING BEFORE PROCEEDING.

MATERIAL CODE	
GL - 01	DOUBLE GLAZED VISION PANEL
GL - 02	SINGLE GALZED SPANDREL PANEL
GL - 03	DOUBLE GLASS ASSEMBLY
AL - 01	ALUMINIUM COMPOSITE PANEL
AL - 02	PERFORATED SOLID ALUMINIUM PANEL
AL - 03	PERFORATED ALUMINIUM PROFILE
AL - 04	ROLLER SHUTTER
RC - 01	REINFORCED FAIR FACED CONCRETE (PIGMENTED)
CR - 01	CEMENT RENDER (PIGMENTED) OVER BLOCK WORK
SS - 01	STAINLESS STEEL

2	07.08.09	ISSUED FOR INFORMATION	MP	W/P	
1	25.06.09	ISSUED FOR INFORMATION	SY	W/P	
REV	DATE	DESCRIPTION	BY	APP	

DRAWN	DESIGNED	CHECKED
SY		DM

KEY PLAN



CONSULTANTS

Architecture
Engineering
Planning
Project Management

S2F Pty Ltd
ACN 055 430 388
Level 1, Building 1
21-31 Goodwood Street
PO Box 99
Richmond 3121 Victoria
T +61 3 9469 4800
F +61 3 9469 4899
E info@s2f.com.au

Denton Corker Marshall
architecture and urban design

QUANTITY SURVEYOR

DAVIS LANGDON
Level 5
100 Pacific Highway
North Sydney NSW 2060
Tel 02 9559 8822
Fax 02 9559 8848

PROJECT DIRECTOR & PROJECT MANAGER

APP CORPORATION PTY LIMITED
1/4, 8 Newcomen St
Newcastle NSW 2300
Tel 02 4928 7900

CLIENT

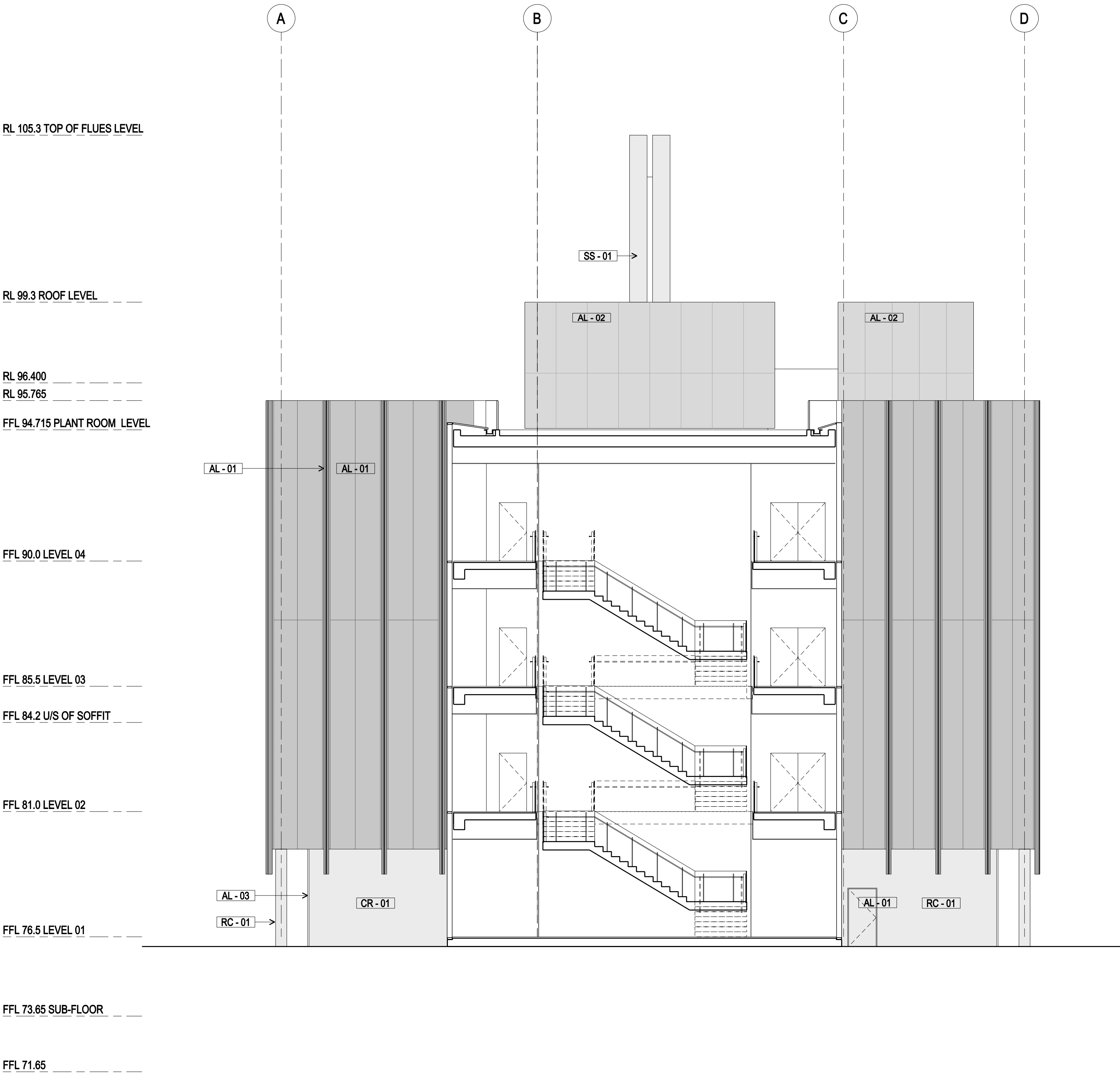
HUNTER MEDICAL RESEARCH INSTITUTE

PROJECT

HUNTER MEDICAL RESEARCH INSTITUTE

JOHN HUNTER HOSPITAL
RANKIN PARK CAMPUS
NEWCASTLE NSW

DRAWING TITLE			REVISION
EAST WING			
WEST ELEVATION			
PATH NAME	EW_A_ELWW	FILED	7347
DRAWING No	T5024	DATE	7/08/2009
SCALE @ B1	1:100 @ B1		2



PRELIMINARY ONLY

FOR DA APPROVAL

THIS DRAWING IS COPYRIGHT AND THE PROPERTY OF THE CONSULTANT AND MUST NOT BE REPRODUCED, COPIED OR USED WITHOUT THE PERMISSION OF THE AUTHOR. ALL DIMENSIONS MUST BE CHECKED ON SITE BEFORE COMMENCEMENT OF ANY WORK AND DISCREPANCIES IMMEDIATELY REPORTED TO THE CONSULTANT FOR INTERPRETATION.

THIS DRAWING IS TO BE READ IN CONJUNCTION WITH THE OTHER DRAWINGS IN THIS SET AND WITH THE PROJECT SPECIFICATIONS. DO NOT SCALE FROM DRAWINGS. REFER TO GIVEN DIMENSIONS.

VARIATIONS TO WORK SHOWN MUST BE CLAIMED AND APPROVED IN WRITING BEFORE PROCEEDING.

MATERIAL CODE

- GL - 01

VISION GLAZING
- GL - 02

SPANDREL GLAZING
- GL - 03

DOUBLE GLASS ASSEMBLY
- AL - 01

ALUMINIUM COMPOSITE PANEL
- AL - 02

PERFORATED SOLID ALUMINIUM PANEL
- AL - 03

PERFORATED ALUMINIUM PROFILE
- AL - 04

ROLLER SHUTTER
- RC - 01

REINFORCED FAIR FACED CONCRETE (PIGMENTED)
- CR - 01

CEMENT RENDER (PIGMENTED) OVER BLOCK WORK
- SS - 01

STAINLESS STEEL

RL 99.3 ROOF LEVEL

RL 96.400
RL 95.765

FFL 94.715 PLANT ROOM LEVEL

FFL 90.0 LEVEL 04

FFL 85.5 LEVEL 03

FFL 83.7 U/S OF SOFFIT

FFL 81.0 LEVEL 02

FFL 76.5 LEVEL 01

G

F

E

AL - 01

GL - 02

GL - 01

RC - 01

1	25.06.09	ISSUED FOR INFORMATION	SY	WP
REV	DATE	DESCRIPTION	BY	APP

DRAWN	DESIGNED	CHECKED
SY		DM

KEY PLAN

CONSULTANTS

Architecture
Engineering
Planning
Project Management
S2F Pty Ltd
ACN 066 420 388
Level 1, Building 1
21-31 Goodwood Street
PO Box 89
Richmond 3121 Victoria
T +61 3 9456 4800
F +61 3 9456 4899
E meba@s2f.com.au



CLIENT

HUNTER MEDICAL RESEARCH
INSTITUTE

PROJECT

HUNTER MEDICAL RESEARCH
INSTITUTE

JOHN HUNTER HOSPITAL
RANKIN PARK CAMPUS
NEWCASTLE NSW

DRAWING TITLE

POD

EAST ELEVATION

PATH NAME	PD_A_ELEE	FILED	7347	REVISION
DRAWING NO	T5032	DATE	25/06/2009	1
SCALE @	1:100 @ B1			

PRELIMINARY

THIS DRAWING IS COPYRIGHT AND THE PROPERTY OF THE CONSULTANT AND MUST NOT BE REPRODUCED, COPIED OR USED WITHOUT THE PERMISSION OF THE AUTHOR. ALL DIMENSIONS MUST BE CHECKED ON SITE BEFORE COMMENCEMENT OF ANY WORK AND DISCREPANCIES IMMEDIATELY REPORTED TO THE CONSULTANT FOR INTERPRETATION.

THIS DRAWING IS TO BE READ IN CONJUNCTION WITH THE OTHER DRAWINGS IN THIS SET AND WITH THE PROJECT SPECIFICATIONS. DO NOT SCALE FROM DRAWINGS. REFER TO GIVEN DIMENSIONS.

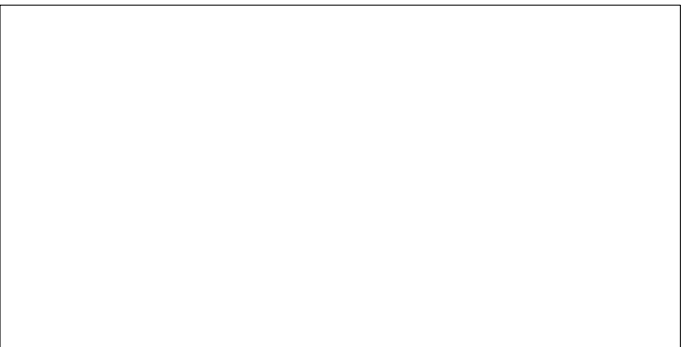
VARIATIONS TO WORK SHOWN MUST BE CLAIMED AND APPROVED IN WRITING BEFORE PROCEEDING.

MATERIAL CODE	
GL - 01	VISION GLAZING
GL - 02	SPANDREL GLAZING
GL - 03	DOUBLE GLASS ASSEMBLY
AL - 01	ALUMINIUM COMPOSITE PANEL
AL - 02	PERFORATED SOLID ALUMINIUM PANEL
AL - 03	PERFORATED ALUMINIUM PROFILE
AL - 04	ROLLER SHUTTER
RC - 01	REINFORCED FAIR FACED CONCRETE (PIGMENTED)
CR - 01	CEMENT RENDER (PIGMENTED) OVER BLOCK WORK
SS - 01	STAINLESS STEEL

1	25.06.09	ISSUED FOR INFORMATION	SY	WP	
REV	DATE	DESCRIPTION	BY	APP	

DRAWN	DESIGNED	CHECKED
		DM

KEY PLAN



CONSULTANTS

Architecture
Engineering
Planning
Project Management

S2F Pty Ltd
ACN 066 420 388
Level 1, Building 1
21-31 Goodwood Street
PO Box 89
Richmond VIC 3121
T +61 3 9406 4800
F +61 3 9406 4899
E me@sf.com.au

CLIENT

HUNTER MEDICAL RESEARCH INSTITUTE

PROJECT

HUNTER MEDICAL RESEARCH INSTITUTE

JOHN HUNTER HOSPITAL
RANKIN PARK CAMPUS
NEWCASTLE NSW

DRAWING TITLE		
POD		
SOUTH ELEVATION		
PATH NAME	PD_A_ELSS	REVISION
DRAWING No	T5033	FILED 7347
SCALE @	1:100 @ B1	DATE 25/06/2009
		1

PRELIMINARY