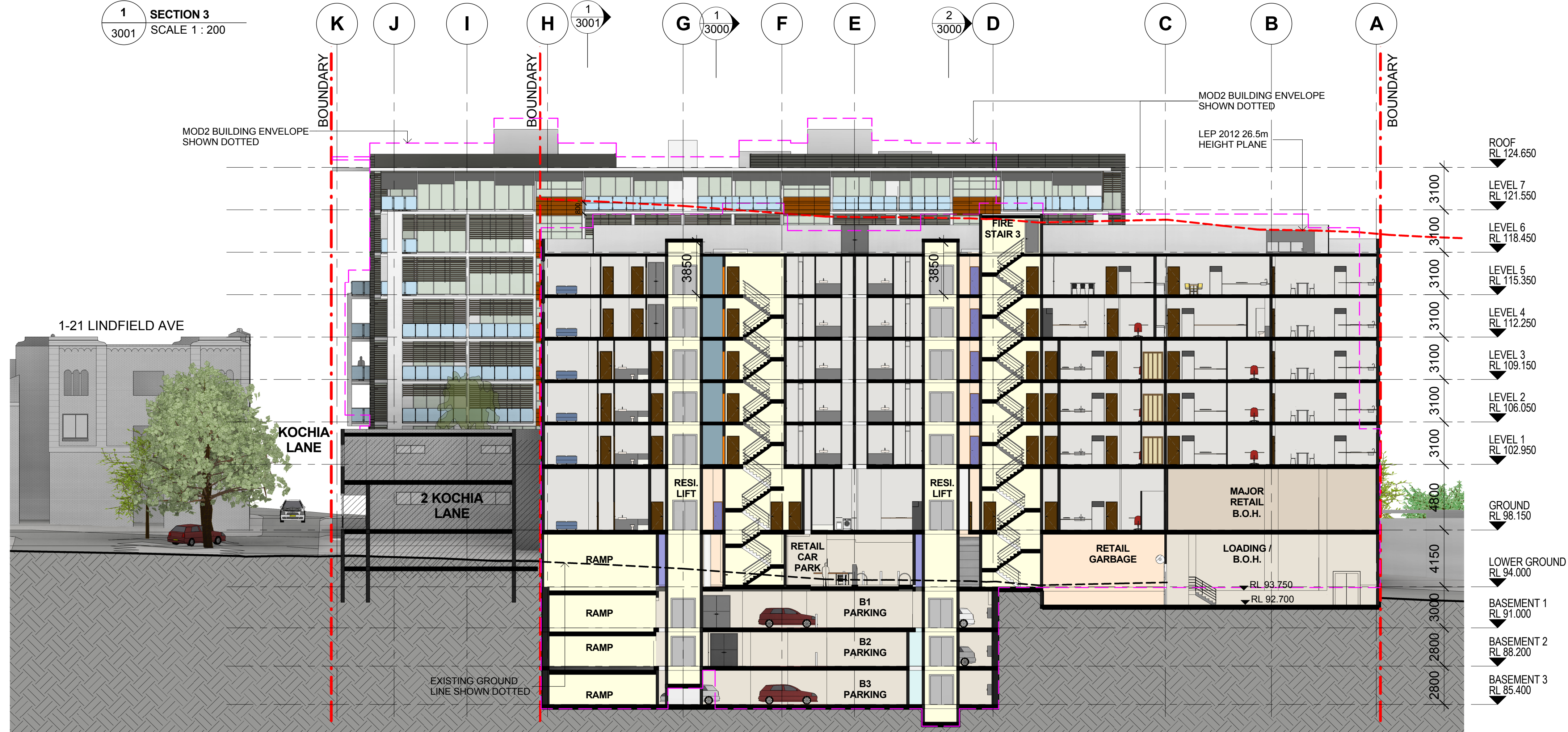


1 SECTION 3
SCALE 1 : 200



2 SECTION 4
SCALE 1 : 200

S75W SUBMISSION - MOD 3

Notes

All dimensions and setbacks to be verified prior to commencement, omissions or discrepancies to be notified to the architect.

Copyright

The copyright of this drawing together with any other documents prepared by crone partners architecture studios, pty ltd (cp) remains the property of cp. crone partners grants licence for the use of this document for the purpose for which they are intended. The licence is not transferable without the permission of cp.

Quality Assurance System

Authorised By: _____ Date: _____

| Rev | DESCRIPTION | By | Date |
|-----|--|----|------------|
| A | ISSUED FOR SECTION 75W SUBMISSION | MQ | 20/11/2012 |
| B | ISSUED FOR PREFERRED PROJECT REPORT SUBMISSION | MQ | 20/05/2013 |
| C | ISSUED FOR SECTION 75W SUBMISSION | MQ | 31/10/2014 |
| D | ISSUED FOR CONSULTANTS COORDINATION | MQ | 19/12/2014 |
| E | ISSUED FOR CONSULTANTS COORDINATION | MQ | 23/12/2014 |
| F | ISSUED FOR INFORMATION | MQ | 11/02/2015 |
| G | ISSUED FOR SECTION 75W MODIFICATION 3 SUBMISSION | MQ | 20/02/2015 |
| H | ISSUED FOR SECTION 75W MODIFICATION 3 SUBMISSION | MQ | 24/02/2015 |

Builder

Client
AQUALAND
LEVEL 32
225 George Street
SYDNEY NSW 2000
Ph: +61 2 9252 3347
Fax: +61 2 9241 1754

Structural Engineer
AECOM
Level 21, 420 George St. Sydney NSW 2000
Ph: 02 8934 0000 Fax: 02 8934 0001

Mechanical Engineer
WOOD & GRIEVE ENGINEERS
Level 3, 454 - 456 Pacific Highway,
St. Leonards, NSW 2000
Ph: 02 9484 7000 Fax: 02 9484 7100

Electrical Engineer
WOOD & GRIEVE ENGINEERS
Level 3, 454 - 456 Pacific Highway,
St. Leonards, NSW 2000
Ph: 02 9484 7000 Fax: 02 9484 7100

Hydraulic Engineer
INSYNC SERVICES
Suite 8, Level 2, 56 Church Ave.
Mascot, NSW 2015
Ph: 02 9669 4311 Fax: 02 9669 4322

Landscape Architect
Land Live Arch
3 Sublime Point Ave
Tascott, NSW 2250
Ph: 0401 271 241

KEY

Scale 1 : 200 @A1

cronepartners
Cronepartners
level 2, 364 kent street,
sydney, nsw 2000, australia
Ph: +61 2 8295 5300
Fax: +61 2 8295 5301

Project
LINDFIELD MIXED-USE DEVELOPMENT
23-41 LINDFIELD AVE & 7,11 HAVILAH LA
LINDFIELD NSW 2070

| | | |
|-----------|-------------|------------------|
| Drawn: MQ | Checked: VD | Date: 24/02/2015 |
|-----------|-------------|------------------|

Drawing Title
SECTIONS

SHEET 2 OF 3
S75W(MOD3) SUBMISSION

| | | | |
|----------------|----------------|-------------|----------|
| CA 2924 | ADAZ | 3001 | H |
| Project no. | Drawing Phase. | Drawing No. | Rev |