

Notes
All dimensions and setbacks to be verified prior to commencement, omissions or discrepancies to be notified to the architect.

Copyright
The copyright of this drawing together with any other documents prepared by crone partners architecture studios. ply ltd (cp) remains the property of cp. crone partners grants licence for the use of this document for the purpose for which they are intended. The licence is not transferable without the permission of cp.

Quality Assurance System

Authorised By: _____ Date: _____

Rev	DESCRIPTION	By	Date
A	ISSUED FOR SECTION 75W SUBMISSION	MQ	20/11/2012
B	ISSUED FOR PREFERRED PROJECT REPORT SUBMISSION	MQ	20/05/2013
C	END UNITS & NORTH & SOUTH ELEVATIONS REVISED	BM	09/08/2013
D	ISSUED FOR SECTION 75W SUBMISSION	MQ	31/10/2014
E	ISSUED FOR INFORMATION	MQ	17/12/2014
F	ISSUED FOR CONSULTANTS COORDINATION	MQ	19/12/2014
G	ISSUED FOR CONSULTANTS COORDINATION	MQ	23/12/2014
H	ISSUED FOR CONSULTANTS COORDINATION	MQ	03/02/2015
I	ISSUED FOR INFORMATION	MQ	11/02/2015
J	ISSUED FOR SECTION 75W MODIFICATION 3 SUBMISSION	MQ	20/02/2015
K	ISSUED FOR SECTION 75W MODIFICATION 3 SUBMISSION	MQ	24/02/2015
L	ISSUED FOR SECTION 75W MODIFICATION 3 SUBMISSION	MQ	24/02/2015

Energy Rating

Certificate Number: 16540023

single-dwelling rating: 6.5 stars

multi-unit development (attach listing of ratings): heating 26.7 MJ/m², cooling 18.0 MJ/m²

Recessed downlights confirmation: ☐ Rated with, ☒ Rated without

Assessor Name/Number: Tom Beckerling VIC/BDV/14/1654

Assessor Signature: _____ Date: 26/02/2015

Builder

Client
AQUALAND
LEVEL 32
225 George Street
SYDNEY NSW 2000
Ph: +61 2 9252 3347
Fax: +61 2 9241 1754

Structural Engineer
AECOM
Level 21, 420 George St. Sydney NSW 2000
Ph: 02 8934 0000 Fax: 02 8934 0001

Mechanical Engineer
WOOD & GRIEVE ENGINEERS
Level 3, 454 - 456 Pacific Highway,
St. Leonards, NSW 2000
Ph: 02 9484 7000 Fax: 02 8484 7100

Electrical Engineer
WOOD & GRIEVE ENGINEERS
Level 3, 454 - 456 Pacific Highway,
St. Leonards, NSW 2000
Ph: 02 9484 7000 Fax: 02 8484 7100

Hydraulic Engineer
INSYNC SERVICES
Suite 8, Level 2, 56 Church Ave.
Mascot, NSW 2015
Ph: 02 9669 4311 Fax: 02 9669 4322

Landscape Architect
Land Live Arch
3 Sublime Point Ave
Tascott, NSW 2250
Ph: 0401 271 241

KEY

Scale 1 : 200 @A1

cronepartners
Cronepartners
level 2, 364 kent street,
sydney, nsw 2000, australia
Ph: +61 2 8295 5300
Fax: +61 2 8295 5301

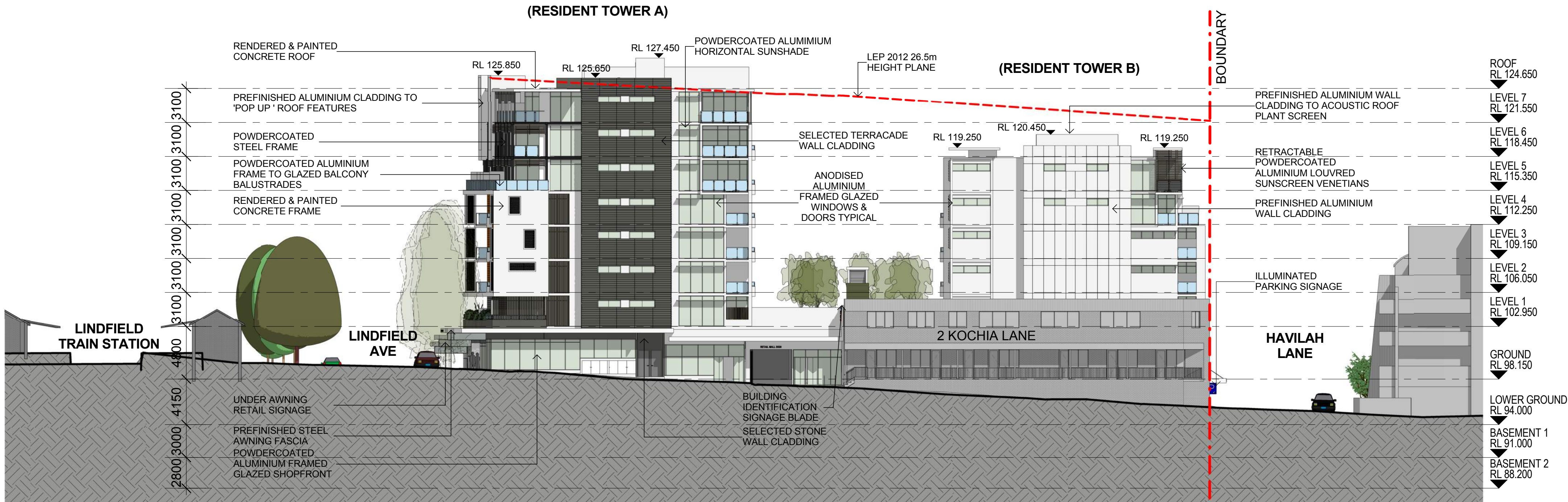
Project
LINDFIELD MIXED-USE DEVELOPMENT
23-41 LINDFIELD AVE & 7,11 HAVILAH LA
LINDFIELD NSW 2070

Drawn: MQ	Checked: VD	Date: 24/02/2015
-----------	-------------	------------------

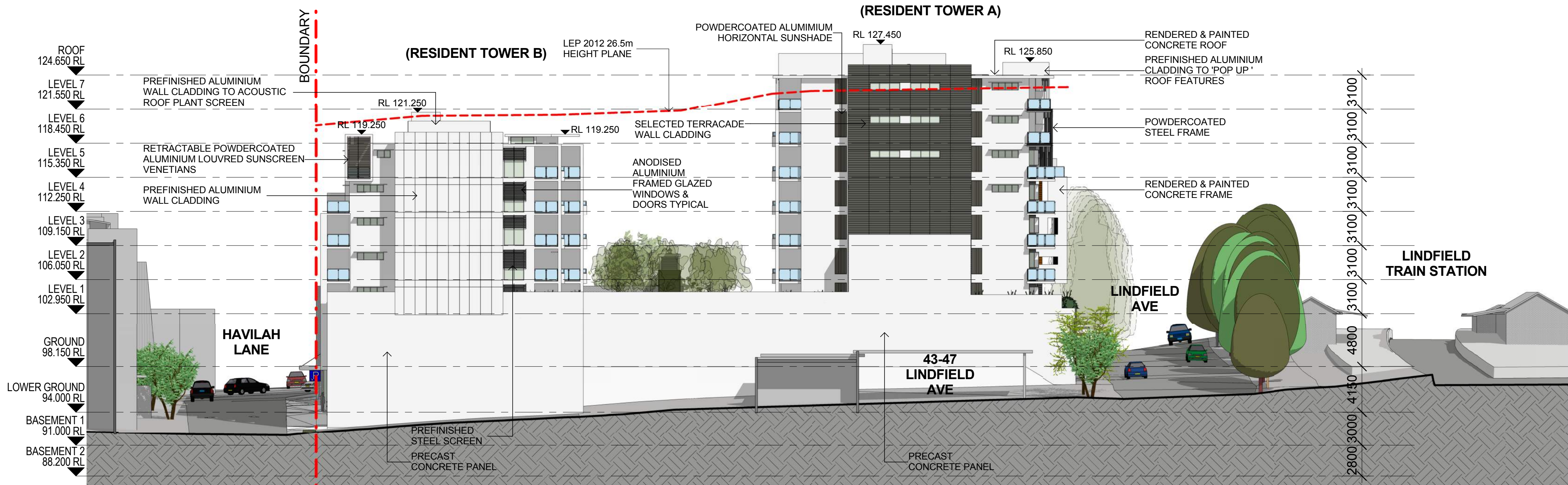
Drawing Title
ROOF PLAN

S75W(MOD3) SUBMISSION

CA 2924	ADAZ	1012	L
Project no.	Drawing Phase.	Drawing No.	Rev



1 KOCHIA LA ELEVATION
SCALE 1 : 250



2 NORTH-WEST ELEVATION
SCALE 1 : 250

Notes

All dimensions and setbacks to be verified prior to commencement, omissions or discrepancies to be notified to the architect.

Copyright

The copyright of this drawing together with any other documents prepared by crone partners architecture studios. ply ltd (cp) remains the property of cp. crone partners grants licence for the use of this document for the purpose for which they are intended. The licence is not transferable without the permission of cp.

Quality Assurance System

Authorised By:

Date:

Rev	DESCRIPTION	By	Date
A	ISSUED FOR SECTION 75W SUBMISSION	MQ	20/11/2012
B	ISSUED FOR PREFERRED PROJECT REPORT SUBMISSION	MQ	20/05/2013
C	END UNITS & NORTH & SOUTH ELEVATIONS REVISED	BM	09/08/2013
D	ISSUED FOR SECTION 75W SUBMISSION	MQ	31/10/2014
E	ISSUED FOR CONSULTANTS COORDINATION	MQ	23/12/2014
F	ISSUED FOR INFORMATION	MQ	11/02/2015
G	ISSUED FOR SECTION 75W MODIFICATION 3 SUBMISSION	MQ	20/02/2015
H	ISSUED FOR SECTION 75W MODIFICATION 3 SUBMISSION	MQ	24/02/2015

Energy Rating

Certificate Number: 16540023

☐ single-dwelling rating

6.5 stars

☒ multi-unit development (attach listing of ratings)

heating 26.7 MJ/m²

cooling 18.0 MJ/m²

Recessed downlights confirmation: ☐ Rated with ☒ Rated without

Assessor Name/Number: Tom Beckerling VIC/BDV/14/1654

Assessor Signature: [Signature] Date: 26/02/2015

Builder

Client

AQUALAND
LEVEL 32
225 George Street
SYDNEY NSW 2000
Ph: +61 2 9252 3347
Fax: +61 2 9241 1754

Structural Engineer

AECOM
Level 21, 420 George St. Sydney NSW 2000
Ph: 02 8934 0000 Fax: 02 8934 0001

Mechanical Engineer

WOOD & GRIEVE ENGINEERS
Level 3, 454 - 456 Pacific Highway,
St. Leonards, NSW 2000
Ph: 02 8484 7000 Fax: 02 8484 7100

Electrical Engineer

WOOD & GRIEVE ENGINEERS
Level 3, 454 - 456 Pacific Highway,
St. Leonards, NSW 2000
Ph: 02 8484 7000 Fax: 02 8484 7100

Hydraulic Engineer

INSYNC SERVICES
Suite 8, Level 2, 56 Church Ave.
Mascot, NSW 2015
Ph: 02 9669 4311 Fax: 02 9669 4322

Landscape Architect

Land Live Arch
3 Sublime Point Ave
Tascott, NSW 2250
Ph: 0401 271 241

KEY

Scale 1 : 250 @A1

cronepartners

Cronepartners
level 2, 364 kent street,
sydney, nsw 2000, australia
Ph: +61 2 8295 5300
Fax: +61 2 8295 5301

Project

LINDFIELD MIXED-USE DEVELOPMENT
23-41 LINDFIELD AVE & 7,11 HAVILAH LA
LINDFIELD NSW 2070

Drawn: MQ

Checked: VD

Date: 24/02/2015

Drawing Title

ELEVATIONS

SHEET 1 OF 2

S75W(MOD3) SUBMISSION

CA 2924

ADAZ

2000

H

Project no.

Drawing Phase.

Drawing No.

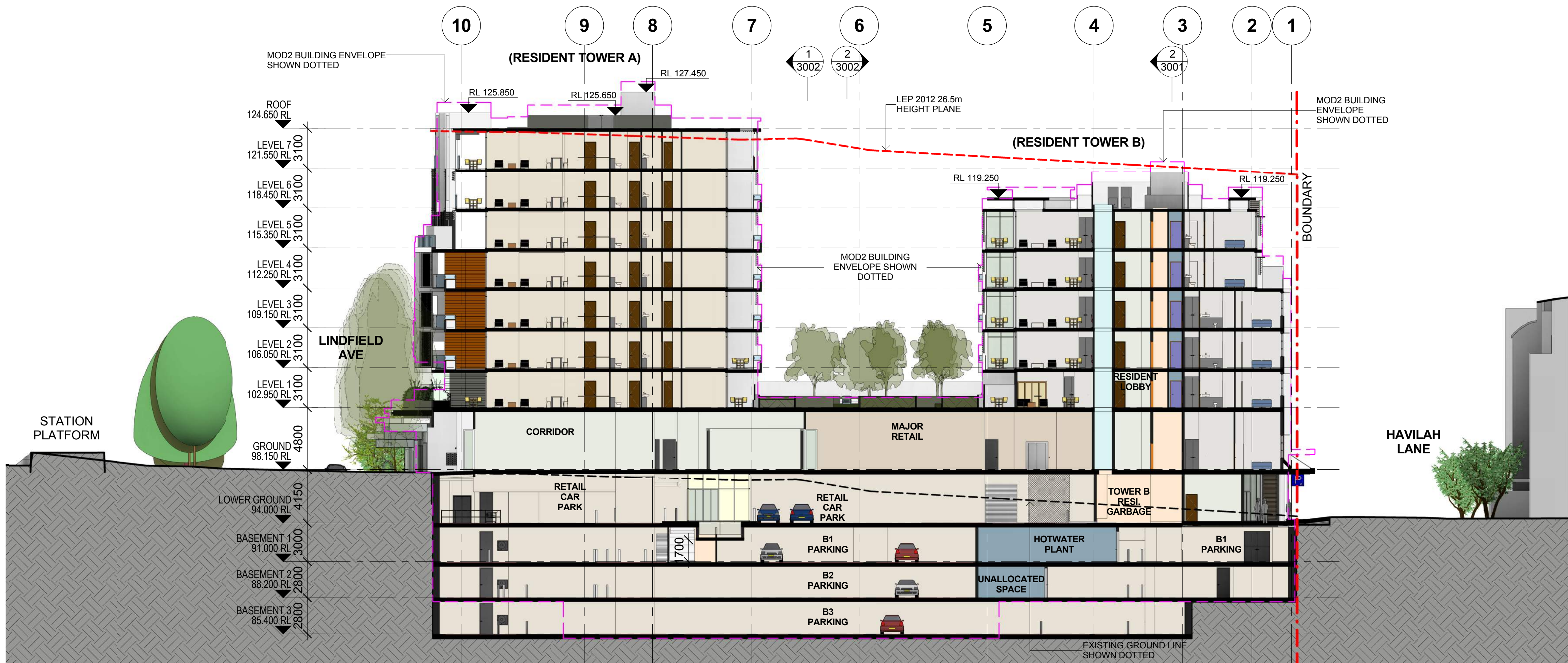
Rev

S75W SUBMISSION - MOD 3

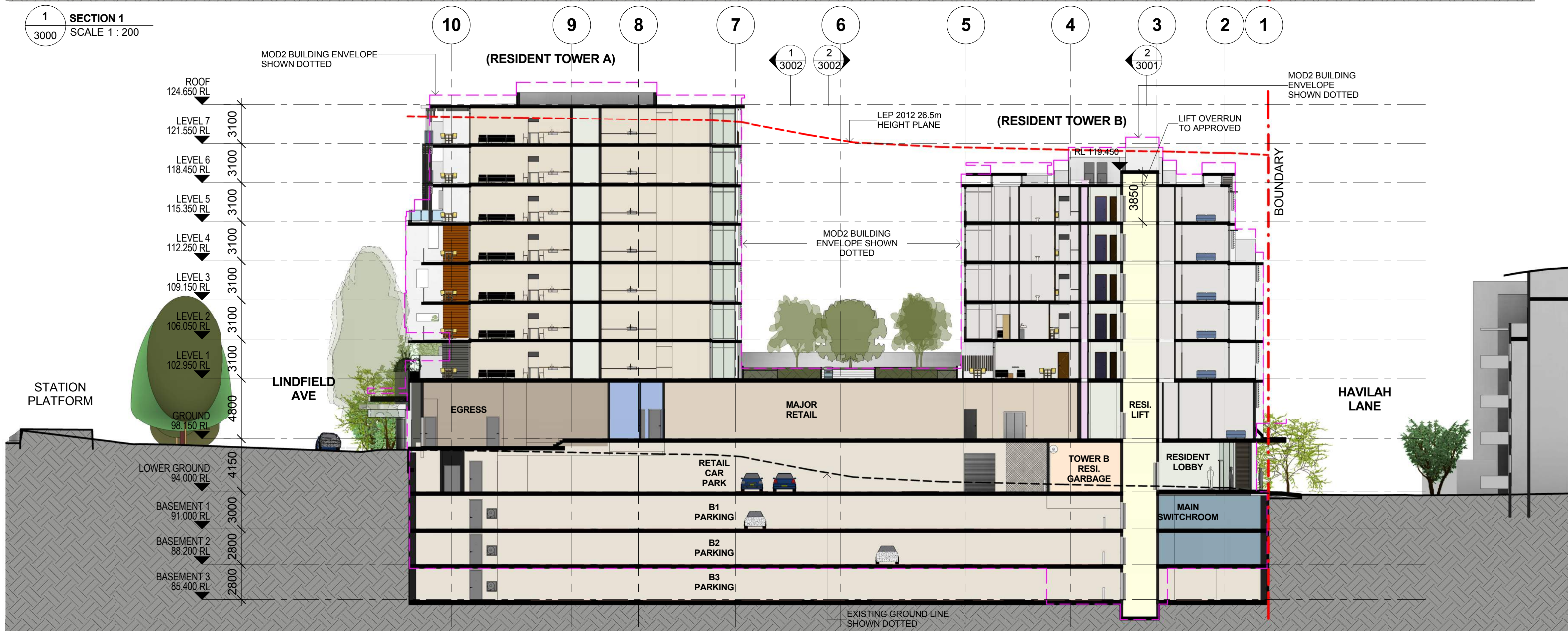
Cad File No: C:\Users\michaelq\Documents\CA-2924-Z-M3-AR-Main_Model-Central-S75W_R15_michaelq.rvt 24/02/2015 10:23:57 AM Plot Date:



S75W SUBMISSION - MOD 3



1 SECTION 1
SCALE 1 : 200



2 SECTION 2
SCALE 1 : 200

COLOR FILL LEGEND

AMENITY	GARBAGE	MECH. RISER	RESIDENT(A)	SERVICE ZONE
CIRCULATION	HORIZONTAL TRANSPORTATION	PARKING	RESIDENT(B)	TANKS
ELECTRICAL RISER	HYD/FIRE RISER	PUBLIC AREA	RETAIL	VERTICAL TRANSPORTATION

S75W SUBMISSION - MOD 3

Notes
All dimensions and setbacks to be verified prior to commencement, omissions or discrepancies to be notified to the architect.

Copyright
The copyright of this drawing together with any other documents prepared by crone partners architecture studios. ply ltd (cp) remains the property of cp. crone partners grants licence for the use of this document for the purpose for which they are intended. The licence is not transferable without the permission of cp.

Quality Assurance System

Authorised By: _____ Date: _____

Rev	DESCRIPTION	By	Date
A	ISSUED FOR SECTION 75W SUBMISSION	MQ	20/11/2012
B	ISSUED FOR PREFERRED PROJECT REPORT SUBMISSION	MQ	20/05/2013
C	ISSUED FOR SECTION 75W SUBMISSION	MQ	31/10/2014
D	ISSUED FOR CONSULTANTS COORDINATION	MQ	19/12/2014
E	ISSUED FOR CONSULTANTS COORDINATION	MQ	23/12/2014
F	ISSUED FOR INFORMATION	MQ	11/02/2015
G	ISSUED FOR SECTION 75W MODIFICATION 3 SUBMISSION	MQ	20/02/2015
H	ISSUED FOR SECTION 75W MODIFICATION 3 SUBMISSION	MQ	24/02/2015

Builder

Client
AQUALAND
LEVEL 32
225 George Street
SYDNEY NSW 2000
Ph: +61 2 9252 3347
Fax: +61 2 9241 1754

Structural Engineer
AECOM
Level 21, 420 George St. Sydney NSW 2000
Ph: 02 8934 0000 Fax: 02 8934 0001

Mechanical Engineer
WOOD & GRIEVE ENGINEERS
Level 3, 454 - 456 Pacific Highway,
St. Leonards, NSW 2000
Ph: 02 8484 7000 Fax: 02 8484 7100

Electrical Engineer
WOOD & GRIEVE ENGINEERS
Level 3, 454 - 456 Pacific Highway,
St. Leonards, NSW 2000
Ph: 02 8484 7000 Fax: 02 8484 7100

Hydraulic Engineer
INSYNC SERVICES
Suite 8, Level 2, 56 Church Ave.
Mascot, NSW 2015
Ph: 02 9669 4311 Fax: 02 9669 4322

Landscape Architect
Land Live Arch
3 Sublime Point Ave
Tascott, NSW 2250
Ph: 0401 271 241

KEY

Scale 1 : 200 @A1

cronepartners
Cronepartners
level 2, 364 Kent street,
sydney, nsw 2000, australia
Ph: +61 2 8295 5300
Fax: +61 2 8295 5301

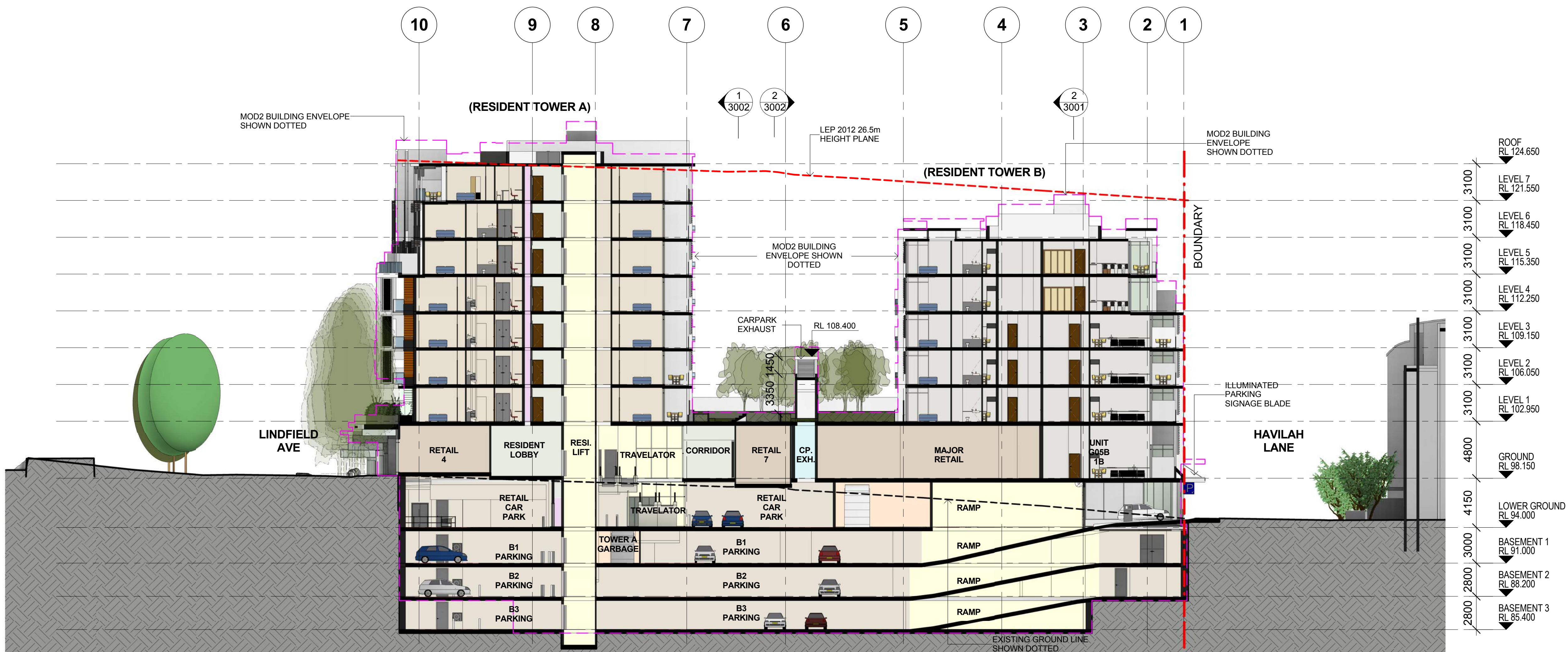
Project
LINDFIELD MIXED-USE DEVELOPMENT
23-41 LINDFIELD AVE & 7,11 HAVILAH LA
LINDFIELD NSW 2070

Drawn: MQ	Checked: VD	Date: 24/02/2015
-----------	-------------	------------------

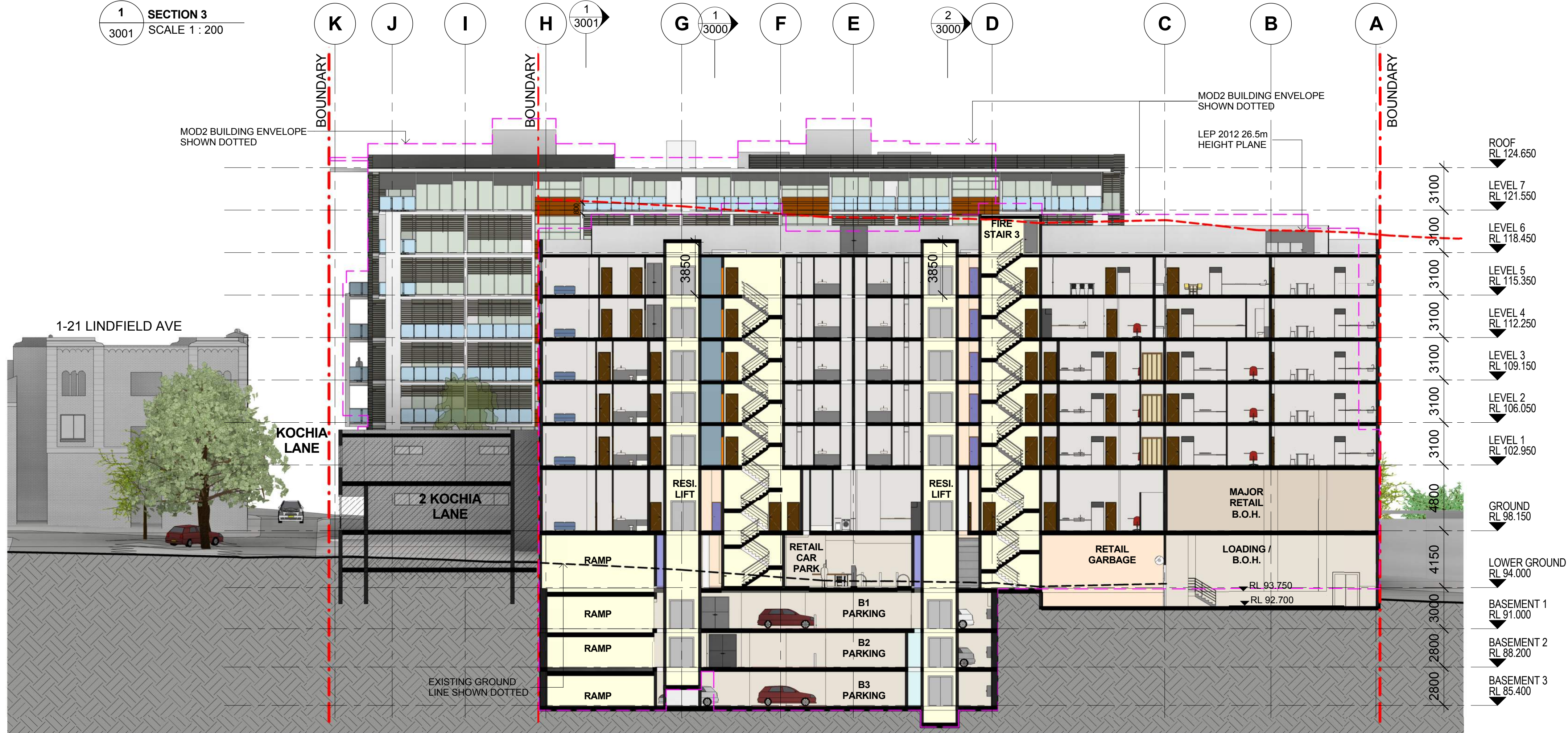
Drawing Title
SECTIONS

SHEET 1 OF 3
S75W(MOD3) SUBMISSION

CA 2924	ADAZ	3000	H
Project no.	Drawing Phase.	Drawing No.	Rev



1 SECTION 3
SCALE 1 : 200



2 SECTION 4
SCALE 1 : 200

Notes
All dimensions and setbacks to be verified prior to commencement, omissions or discrepancies to be notified to the architect.

Copyright
The copyright of this drawing together with any other documents prepared by crone partners architecture studios, ply ltd (cp) remains the property of cp. crone partners grants licence for the use of this document for the purpose for which they are intended. The licence is not transferable without the permission of cp.

Quality Assurance System

Authorised By: _____ Date: _____

Rev	DESCRIPTION	By	Date
A	ISSUED FOR SECTION 75W SUBMISSION	MQ	20/11/2012
B	ISSUED FOR PREFERRED PROJECT REPORT SUBMISSION	MQ	20/05/2013
C	ISSUED FOR SECTION 75W SUBMISSION	MQ	31/10/2014
D	ISSUED FOR CONSULTANTS COORDINATION	MQ	19/12/2014
E	ISSUED FOR CONSULTANTS COORDINATION	MQ	23/12/2014
F	ISSUED FOR INFORMATION	MQ	11/02/2015
G	ISSUED FOR SECTION 75W MODIFICATION 3 SUBMISSION	MQ	20/02/2015
H	ISSUED FOR SECTION 75W MODIFICATION 3 SUBMISSION	MQ	24/02/2015

Energy Rating Certificate Number: 16540023

☐ single-dwelling rating 6.5 stars

☒ multi-unit development (attach listing of ratings) heating 26.7 MJ/m²

Recessed downlights confirmation: ☐ Rated with ☒ Rated without cooling 18.0 MJ/m²

Assessor Name/Number: Tom Beckerling VIC/BDV/14/1654

Assessor Signature: _____ Date: 26/02/2015

Builder

Client
AQUALAND
LEVEL 32
225 George Street
SYDNEY NSW 2000
Ph: +61 2 9252 3347
Fax: +61 2 9241 1754

Structural Engineer
AECOM
Level 21, 420 George St. Sydney NSW 2000
Ph: 02 8934 0000 Fax: 02 8934 0001

Mechanical Engineer
WOOD & GRIEVE ENGINEERS
Level 3, 454 - 456 Pacific Highway,
St. Leonards, NSW 2000
Ph: 02 9484 7000 Fax: 02 9484 7100

Electrical Engineer
WOOD & GRIEVE ENGINEERS
Level 3, 454 - 456 Pacific Highway,
St. Leonards, NSW 2000
Ph: 02 9484 7000 Fax: 02 9484 7100

Hydraulic Engineer
INSYNC SERVICES
Suite 8, Level 2, 56 Church Ave.
Mascot, NSW 2015
Ph: 02 9669 4311 Fax: 02 9669 4322

Landscape Architect
Land Live Arch
3 Sublime Point Ave
Tascott, NSW 2250
Ph: 0401 271 241

KEY

Scale 1 : 200 @A1

cronepartners
Cronepartners
level 2, 364 kent street,
sydney, nsw 2000, australia
Ph: +61 2 8295 5300
Fax: +61 2 8295 5301

Project
LINDFIELD MIXED-USE DEVELOPMENT
23-41 LINDFIELD AVE & 7,11 HAVILAH LA
LINDFIELD NSW 2070

Drawn: MQ Checked: VD Date: 24/02/2015

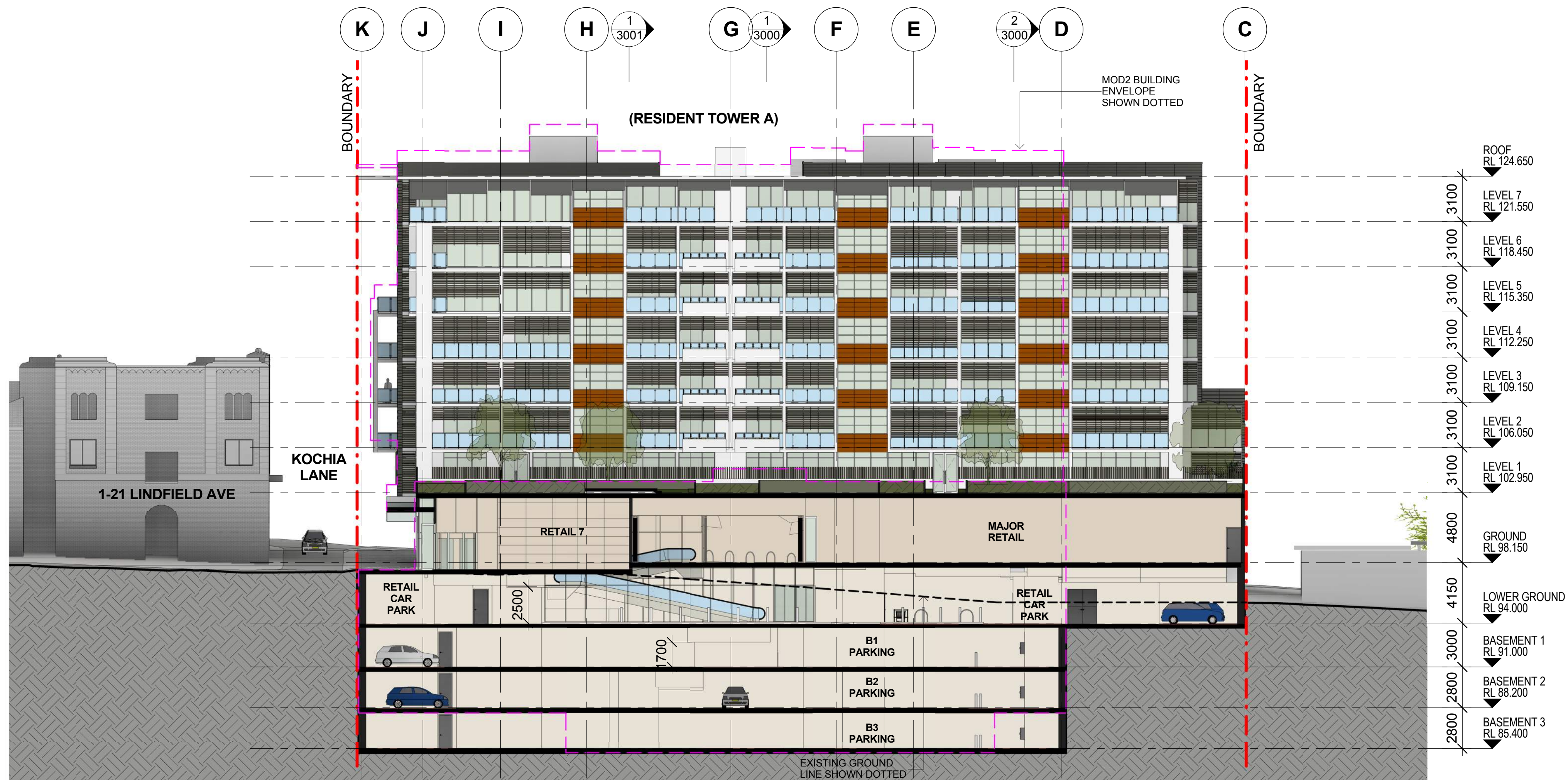
Drawing Title
SECTIONS

SHEET 2 OF 3
S75W(MOD3) SUBMISSION

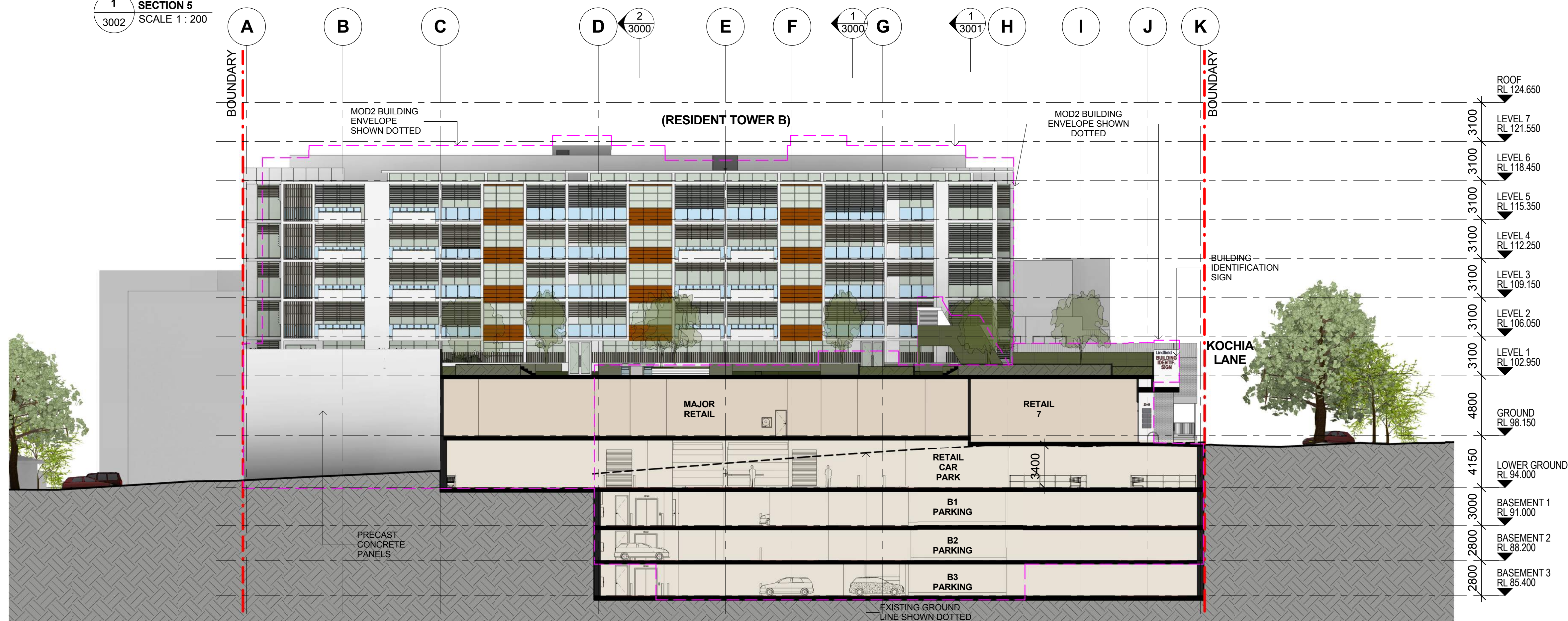
CA 2924	ADAZ	3001	H
Project no.	Drawing Phase.	Drawing No.	Rev

S75W SUBMISSION - MOD 3

Cad File No: C:\Users\michaelq\Documents\CA-2924-Z-M3-AR-Main_Model-Central-S75W_R15_michaelq.rvt Plot Date: 23/02/2015 6:29:35 PM



1 SECTION 5
3002 SCALE 1 : 200



2 SECTION 6
3002 SCALE 1 : 200

Notes
All dimensions and setbacks to be verified prior to commencement, omissions or discrepancies to be notified to the architect.

Copyright
The copyright of this drawing together with any other documents prepared by crone partners architecture studios. ply ltd (cp) remains the property of cp. crone partners grants licence for the use of this document for the purpose for which they are intended. The licence is not transferable without the permission of cp.

Quality Assurance System

Authorised By: **Date:**

Rev	DESCRIPTION	By	Date
A	ISSUED FOR SECTION 75W SUBMISSION	MQ	20/11/2012
B	ISSUED FOR PREFERRED PROJECT REPORT SUBMISSION	MQ	20/05/2013
C	END UNITS & NORTH & SOUTH ELEVATIONS REVISED	BM	09/08/2013
D	ISSUED FOR SECTION 75W SUBMISSION	MQ	31/10/2014
E	ISSUED FOR CONSULTANTS COORDINATION	MQ	19/12/2014
F	ISSUED FOR CONSULTANTS COORDINATION	MQ	23/12/2014
G	ISSUED FOR INFORMATION	MQ	11/02/2015
H	ISSUED FOR SECTION 75W MODIFICATION 3 SUBMISSION	MQ	20/02/2015
I	ISSUED FOR SECTION 75W MODIFICATION 3 SUBMISSION	MQ	24/02/2015

Energy Rating Certificate Number: 165400223

☐ single-dwelling rating 6.5 stars

☒ multi-unit development (attach listing of ratings) heating 26.7 MJ/m² cooling 18.0 MJ/m²

Recessed downlights confirmation: ☐ Rated with ☒ Rated without

Assessor Name/Number: Tom Beckerling VIC/BDAY/14/1654

Assessor Signature: [Signature] Date: 26/02/2015

Builder

Client
AQUALAND
LEVEL 32
225 George Street
SYDNEY NSW 2000
Ph: +61 2 9252 3347
Fax: +61 2 9241 1754

Structural Engineer
AECOM
Level 21, 420 George St. Sydney NSW 2000
Ph: 02 8934 0000 Fax: 02 8934 0001

Mechanical Engineer
WOOD & GRIEVE ENGINEERS
Level 3, 454 - 456 Pacific Highway,
St. Leonards, NSW 2000
Ph: 02 8484 7000 Fax: 02 8484 7100

Electrical Engineer
WOOD & GRIEVE ENGINEERS
Level 3, 454 - 456 Pacific Highway,
St. Leonards, NSW 2000
Ph: 02 8484 7000 Fax: 02 8484 7100

Hydraulic Engineer
INSYNC SERVICES
Suite 8, Level 2, 56 Church Ave.
Mascot, NSW 2015
Ph: 02 9669 4311 Fax: 02 9669 4322

Landscape Architect
Land Live Arch
3 Sublime Point Ave
Tascott, NSW 2250
Ph: 0401 271 241

KEY

Scale 1 : 200 @A1

cronepartners
Cronepartners
level 2, 364 kent street,
sydney, nsw 2000, australia
Ph: +61 2 8295 5300
Fax: +61 2 8295 5301

Project
LINDFIELD MIXED-USE DEVELOPMENT
23-41 LINDFIELD AVE & 7,11 HAVILAH LA
LINDFIELD NSW 2070

Drawn: MQ	Checked: VD	Date: 24/02/2015
-----------	-------------	------------------

Drawing Title
SECTIONS

SHEET 3 OF 3
S75W(MOD3) SUBMISSION

CA 2924	ADAZ	3002	I
Project no.	Drawing Phase.	Drawing No.	Rev

S75W SUBMISSION - MOD 3