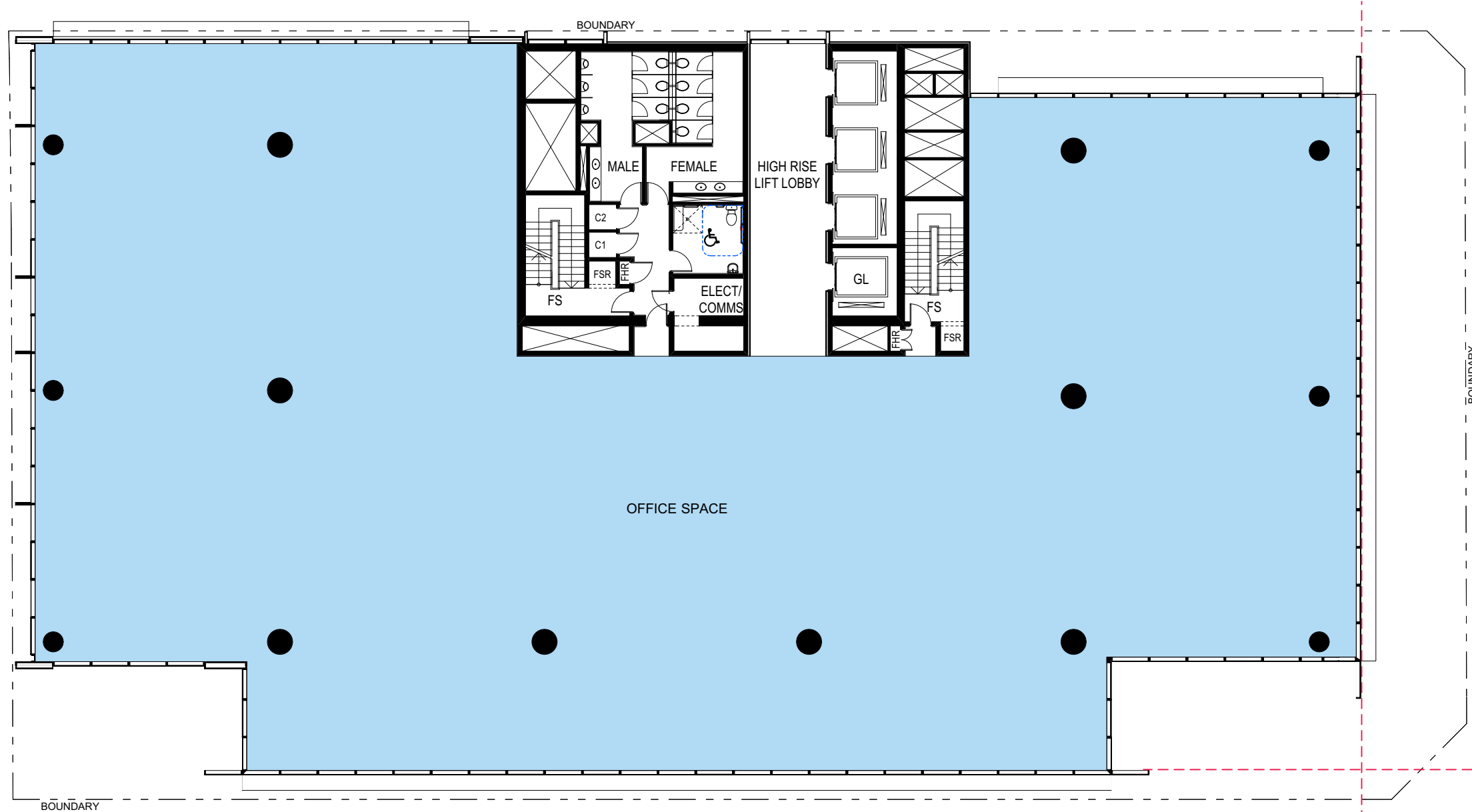
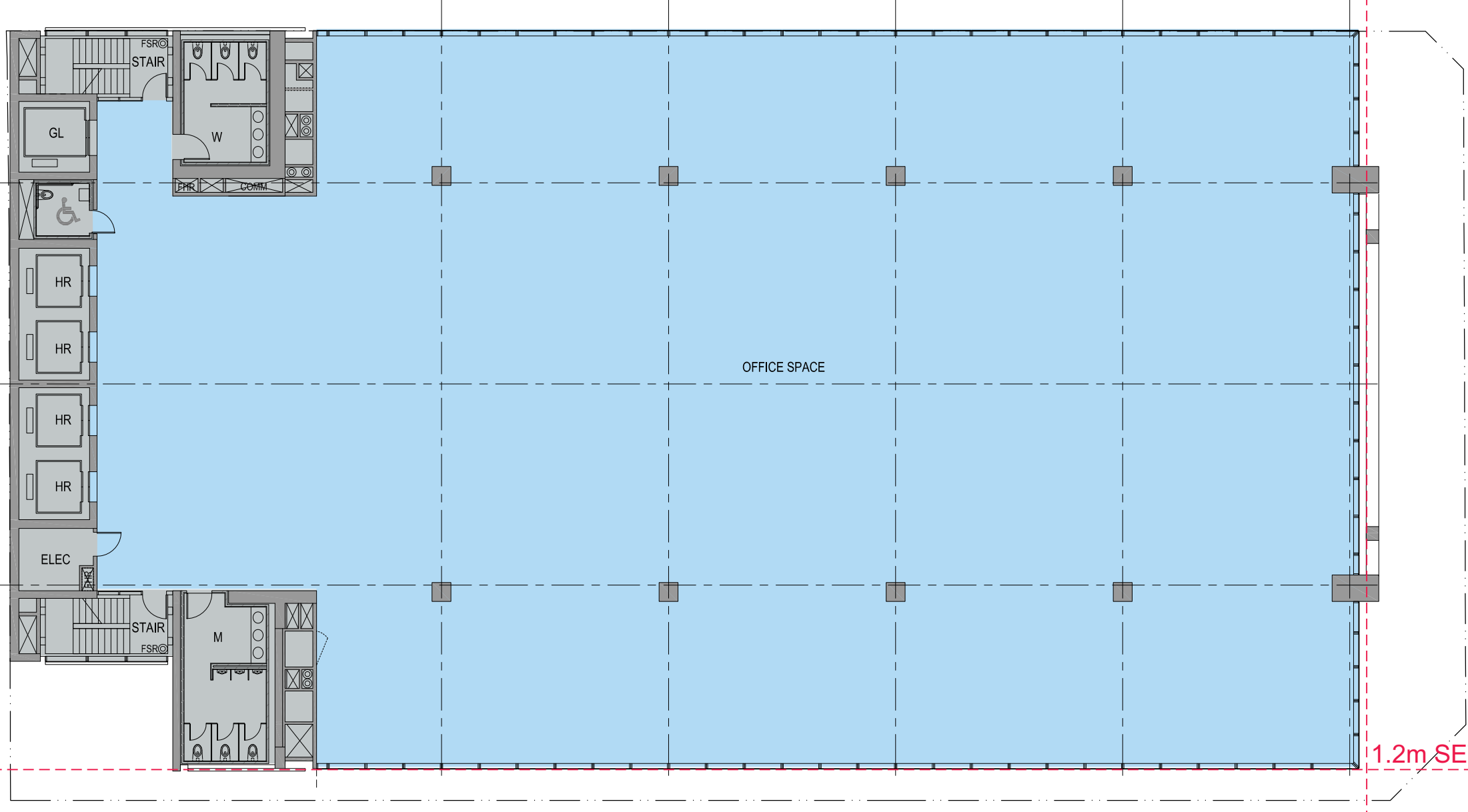


Do not scale drawings. Verify all dimensions on site

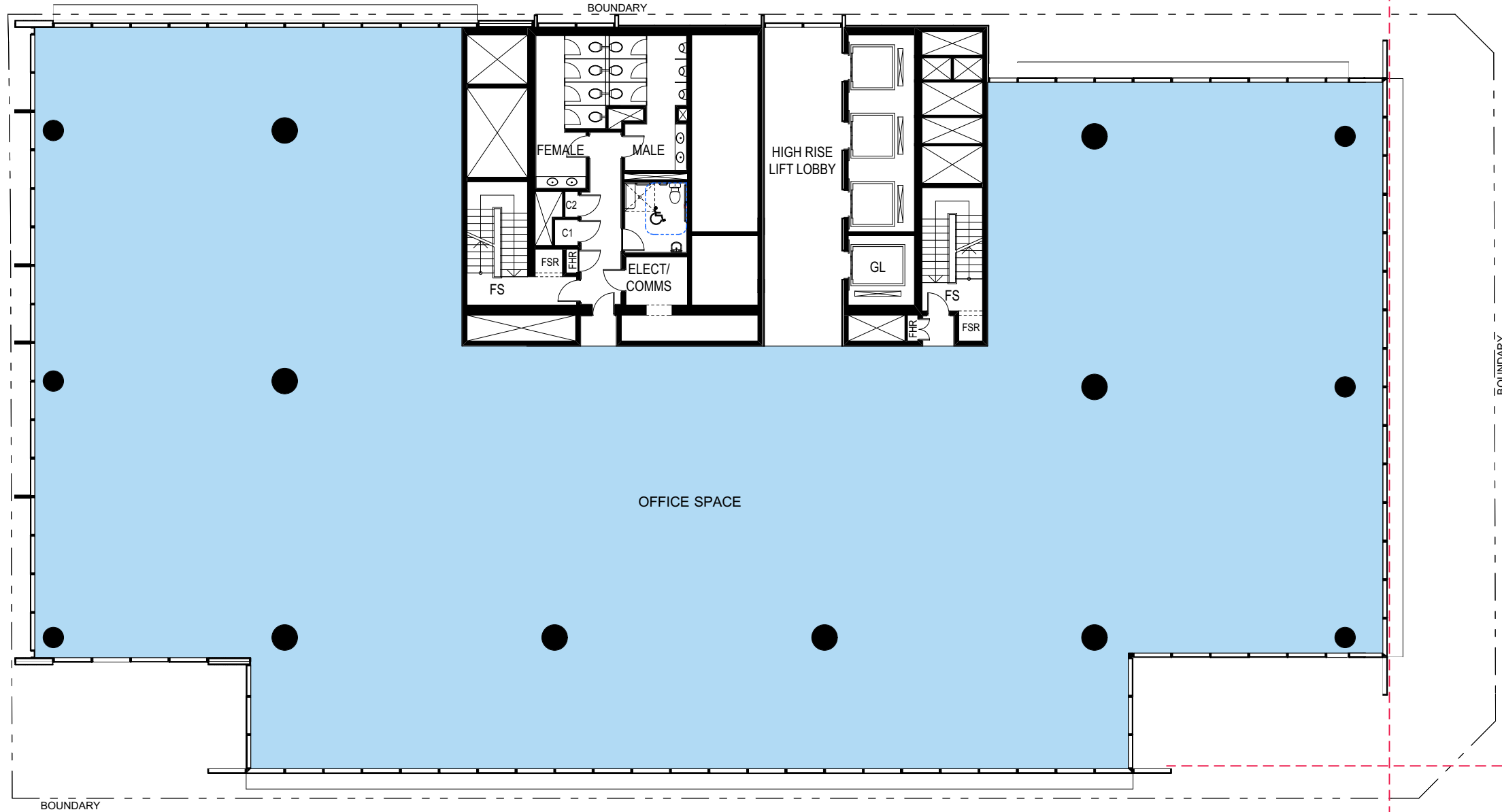
issue	amendment	date
A	SECTION 75W APPLICATION	31.08.11



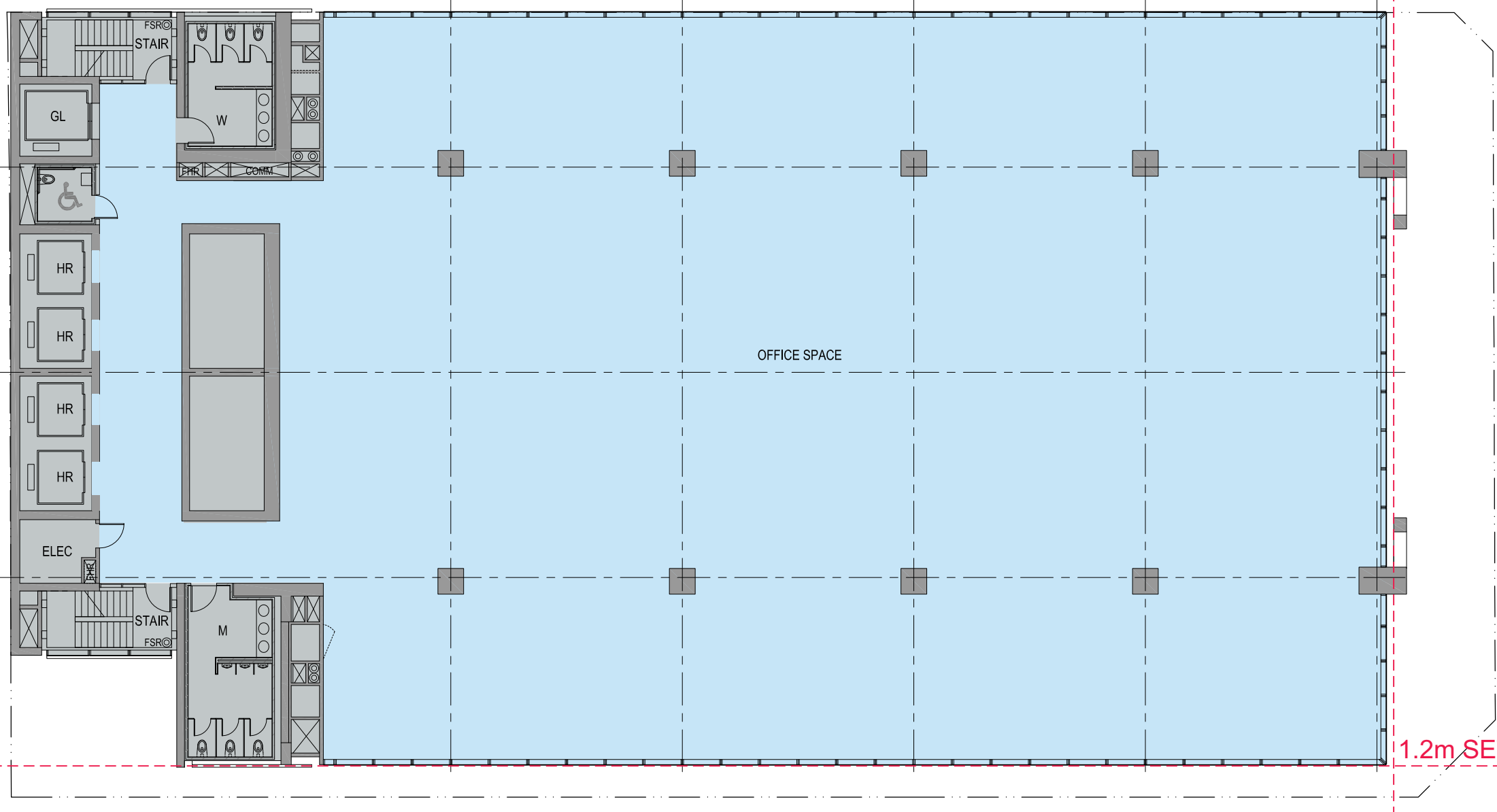
Approved: Level 34-41 - High Rise Levels
L34 FFL: 160.10
8 Floor @ 3.70m
GFA: 1314 m²
GBA: 1400 m²



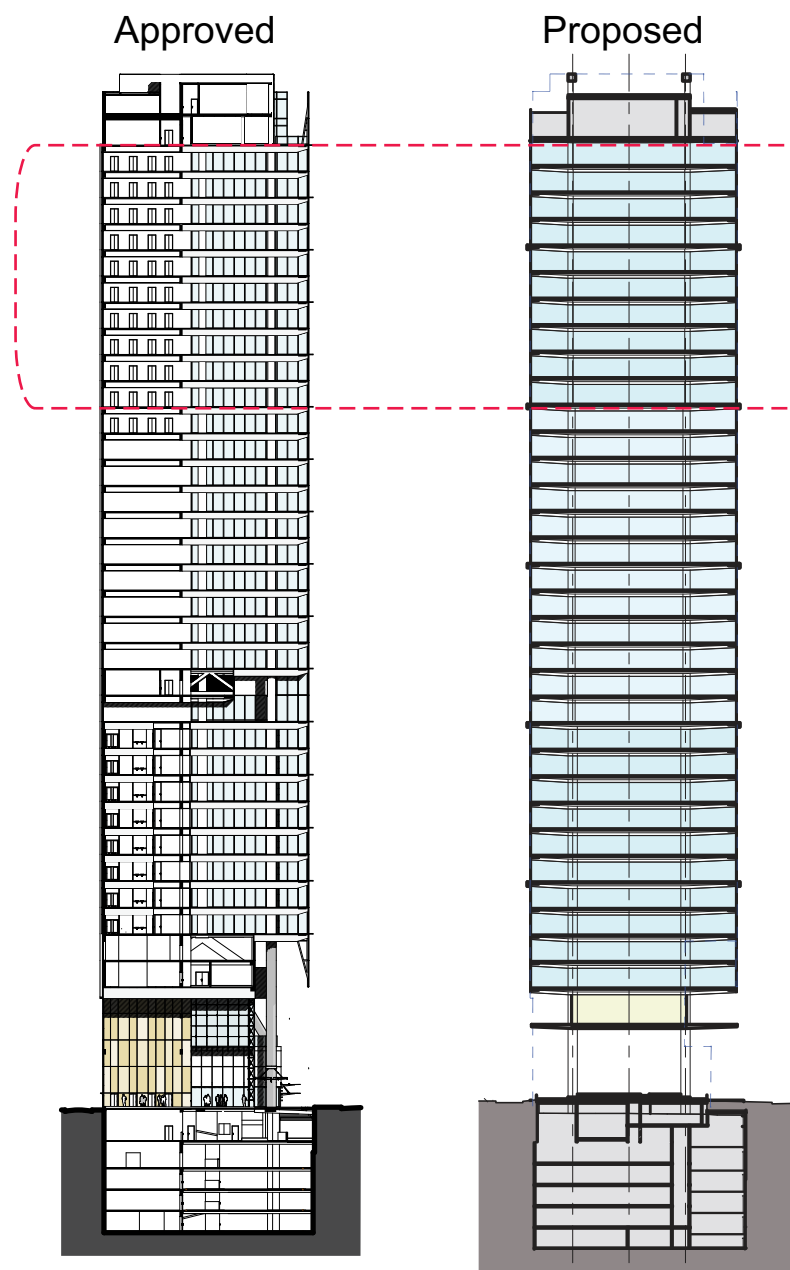
Proposed: Level 26-33 - High Rise Levels
L26 FFL: 160.50
8 Floor @ 3.75m
GFA: 1399 m²
GBA: 1499 m²



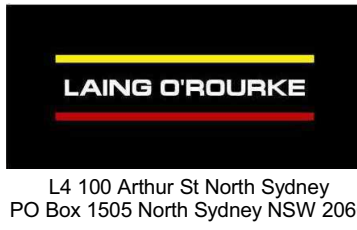
Approved: Level 32-33 - High Rise Levels (LOR/LMR)
L32 FFL: 152.70
L33 FFL: 156.40
GFA: 1278 m²
GBA: 1400 m²



Proposed: Level 24-25 - High Rise Levels (LOR/LMR)
L24 FFL: 153.00
L25 FFL: 156.75
GFA: 1368 m²
GBA: 1469 m²



client



architectus™

Architectus Sydney
Level 3 341 George Street
Sydney NSW 2000
T (61 2) 8252 8400
F (61 2) 8252 8600
sydney@architectus.com.au
ABN 11 098 489 448

project

100 Mount Street, North Sydney

drawing

Comparison with Approved Scheme -
Level 24-25 + Level 26-33

scale	1:400 @ A3, 1:200 @ A1	drawing no.	DA146
drawn	-	issue	A
checked	MC	project no	110059