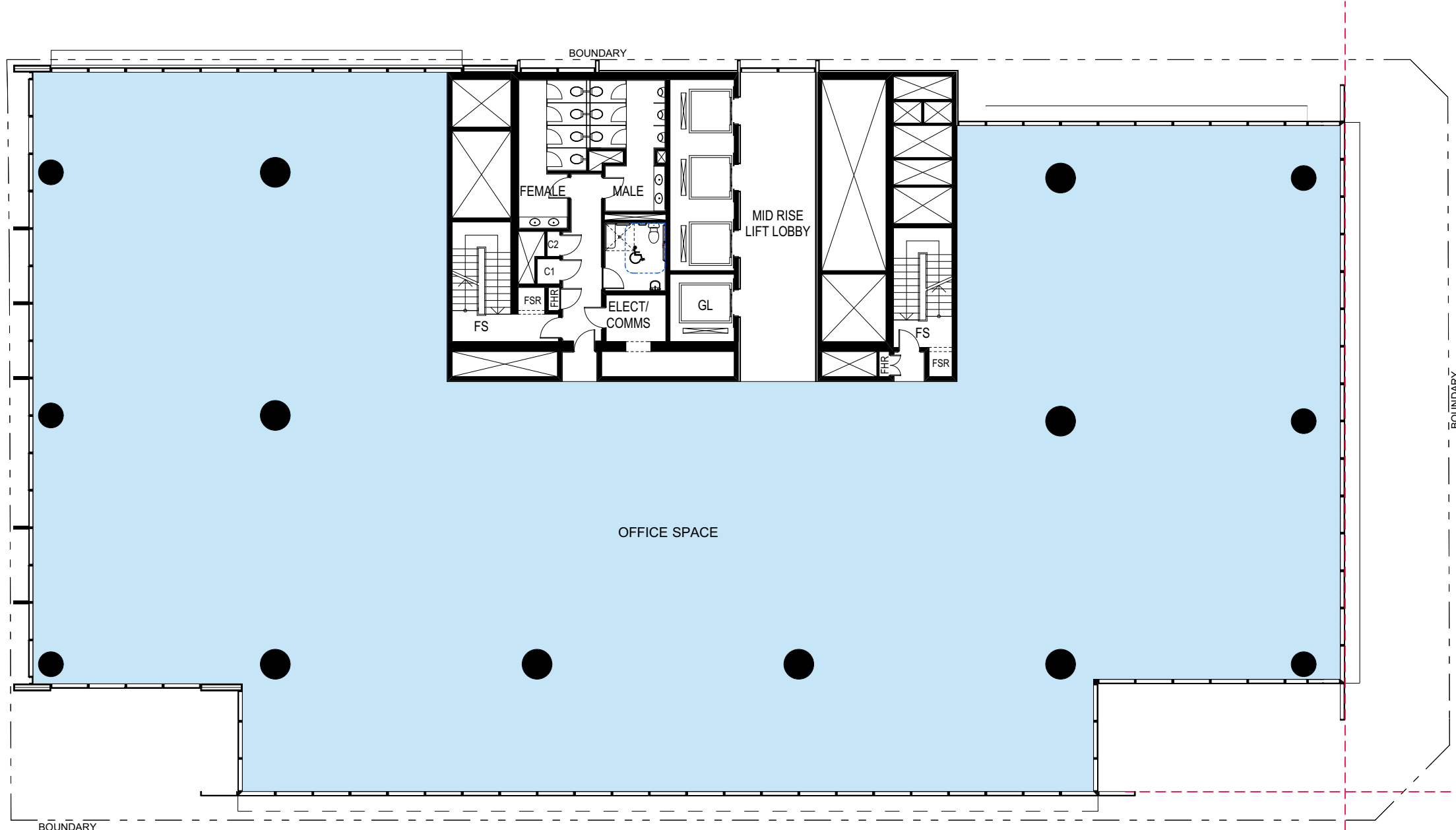
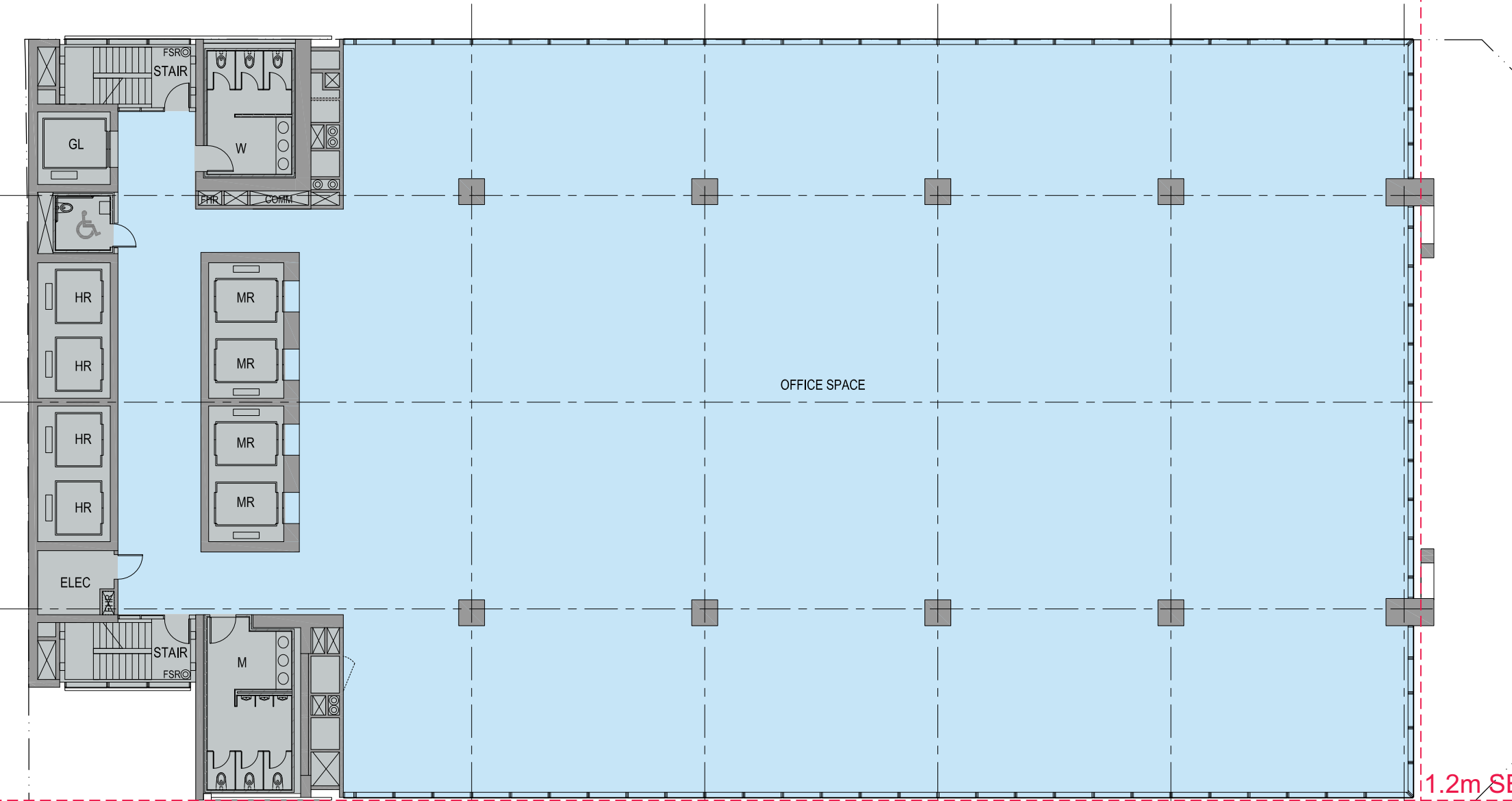


Do not scale drawings. Verify all dimensions on site

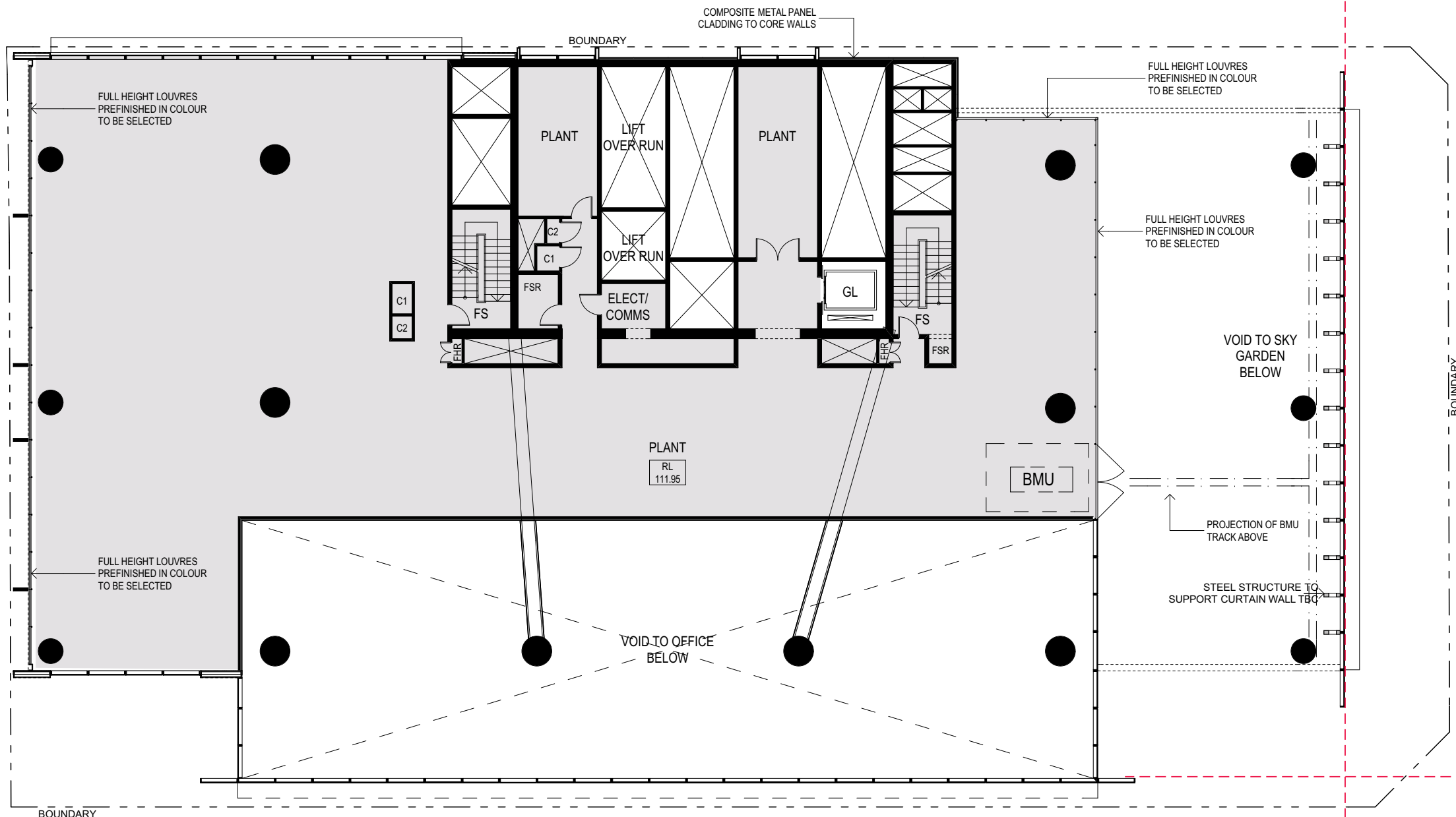
issue	amendment	date
A	SECTION 7SW APPLICATION	31.08.11



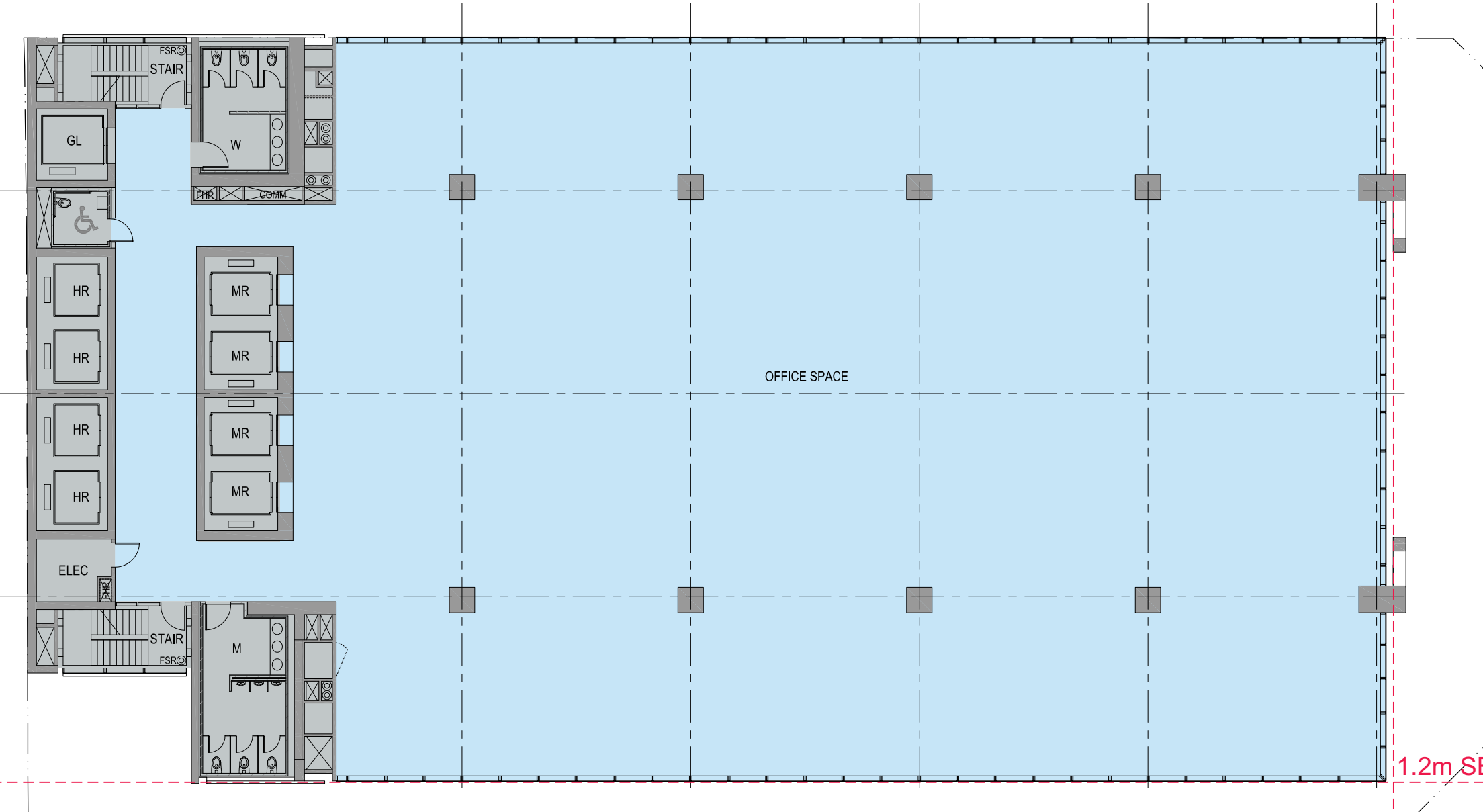
Approved: Level 22-30 - Mid Rise Levels  
Level 31 - Mid Rise/Transfer Level (Plan Similar)  
L22 FFL: 115.70  
10 Floor @ 3.70m  
GFA: 1278 m<sup>2</sup>  
GBA: 1400 m



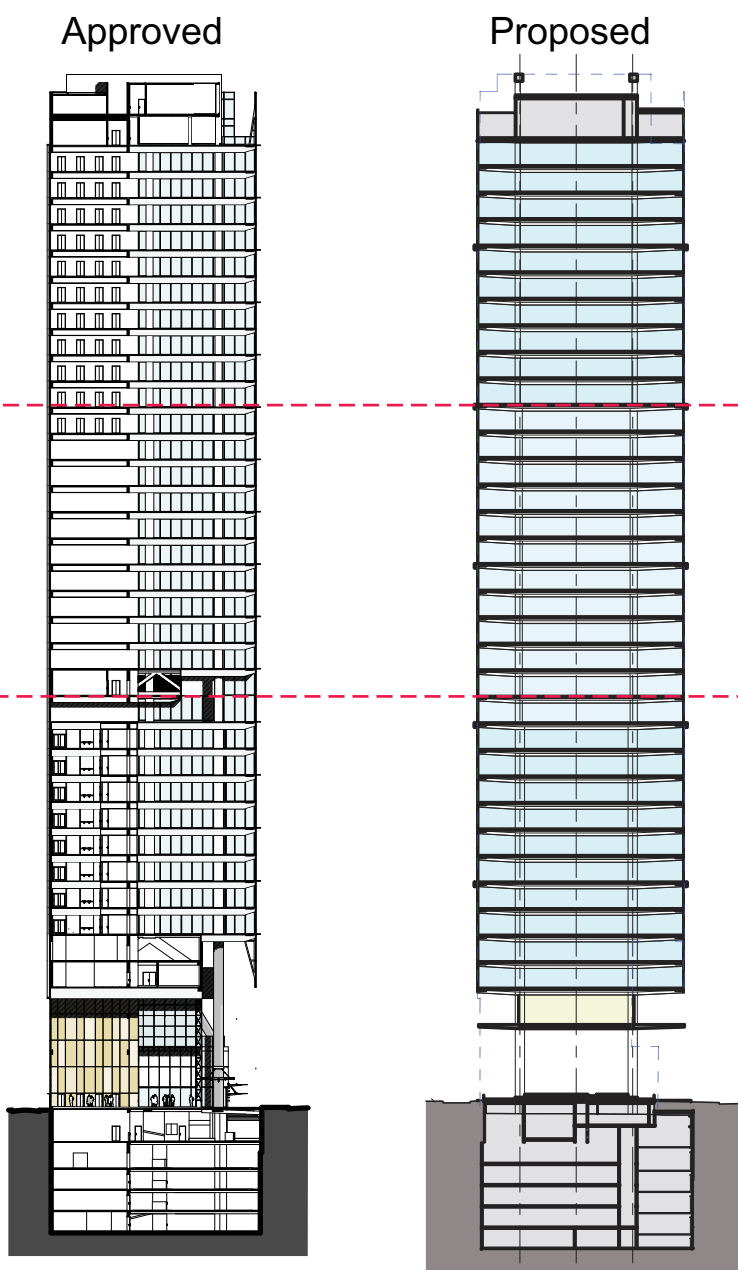
Proposed: Level 14-22 - Mid Rise Levels  
Level 23 - Mid Rise/Transfer Level (Plan Similar)  
L14 FFL: 115.500  
10 Floor @ 3.75m  
GFA: 1368 m<sup>2</sup>  
GBA: 1469 m



Approved: Level 21 - Mid Plant/Lift Overrun  
FFL: 111.950  
GBA: 840 m<sup>2</sup>



Proposed: Level 13 - Mid Rise Level  
FFL: 111.750  
GFA: 1368 m<sup>2</sup>  
GBA: 1469 m<sup>2</sup>



client

LAING O'ROURKE  
L4 100 Arthur St North Sydney  
PO Box 1505 North Sydney NSW 2060

SOM  
Skidmore, Owings & Merrill LLP  
224 South Michigan Avenue, Suite 1000  
Chicago, Illinois 60604

architectus™

Architectus Sydney  
Level 3 341 George Street  
Sydney NSW 2000  
T (61 2) 8232 8400  
F (61 2) 8232 8600  
sydney@architectus.com.au  
ABN 11 098 489 448

project

100 Mount Street, North Sydney

drawing

Comparison with Approved Scheme -  
Level 13 + Level 14-23

scale	1:400 @ A3, 1:200 @ A1	drawing no.	
drawn			DA145
checked	MC	issue	
project no	110059		A