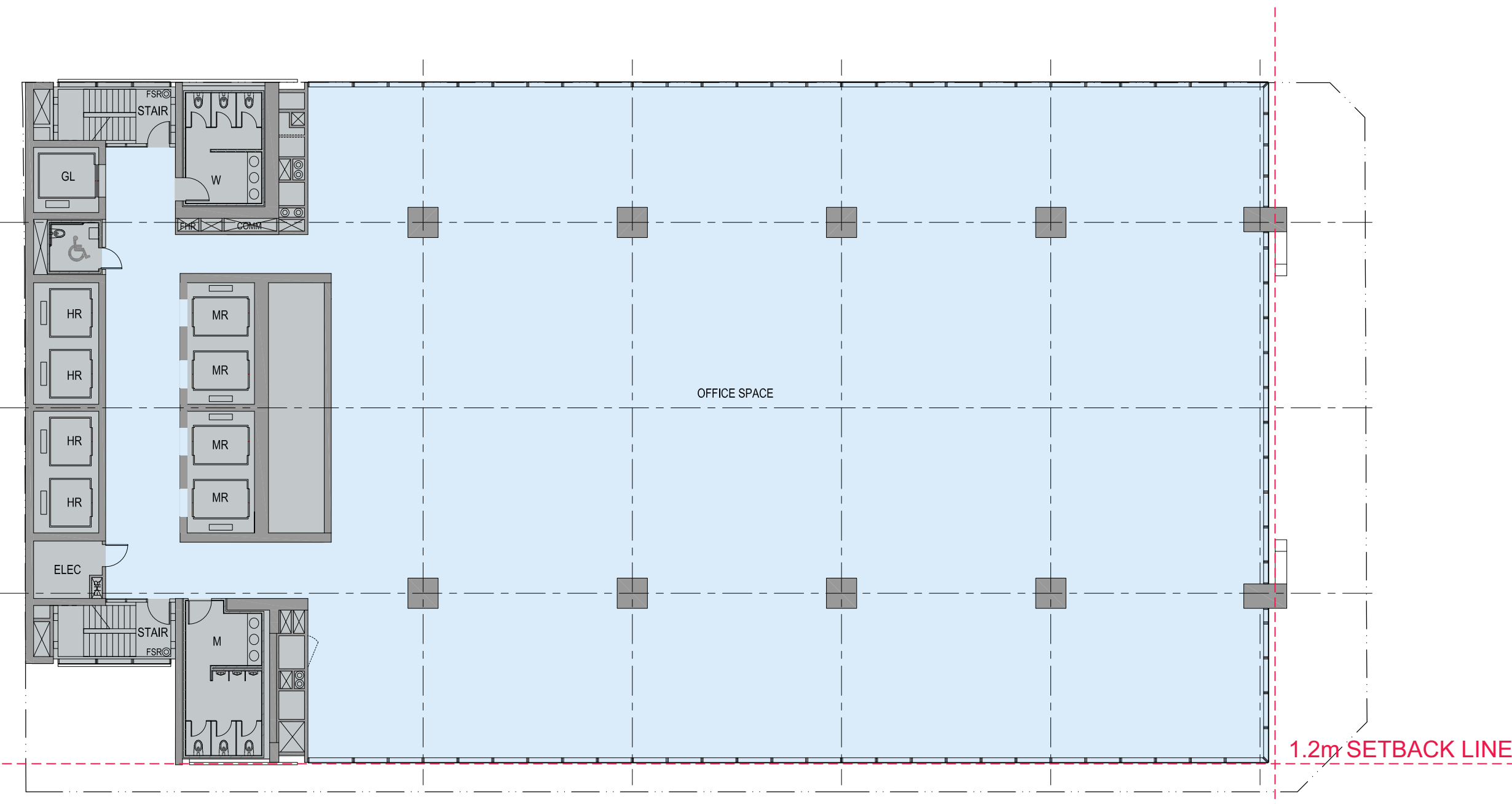


Do not scale drawings. Verify all dimensions on site

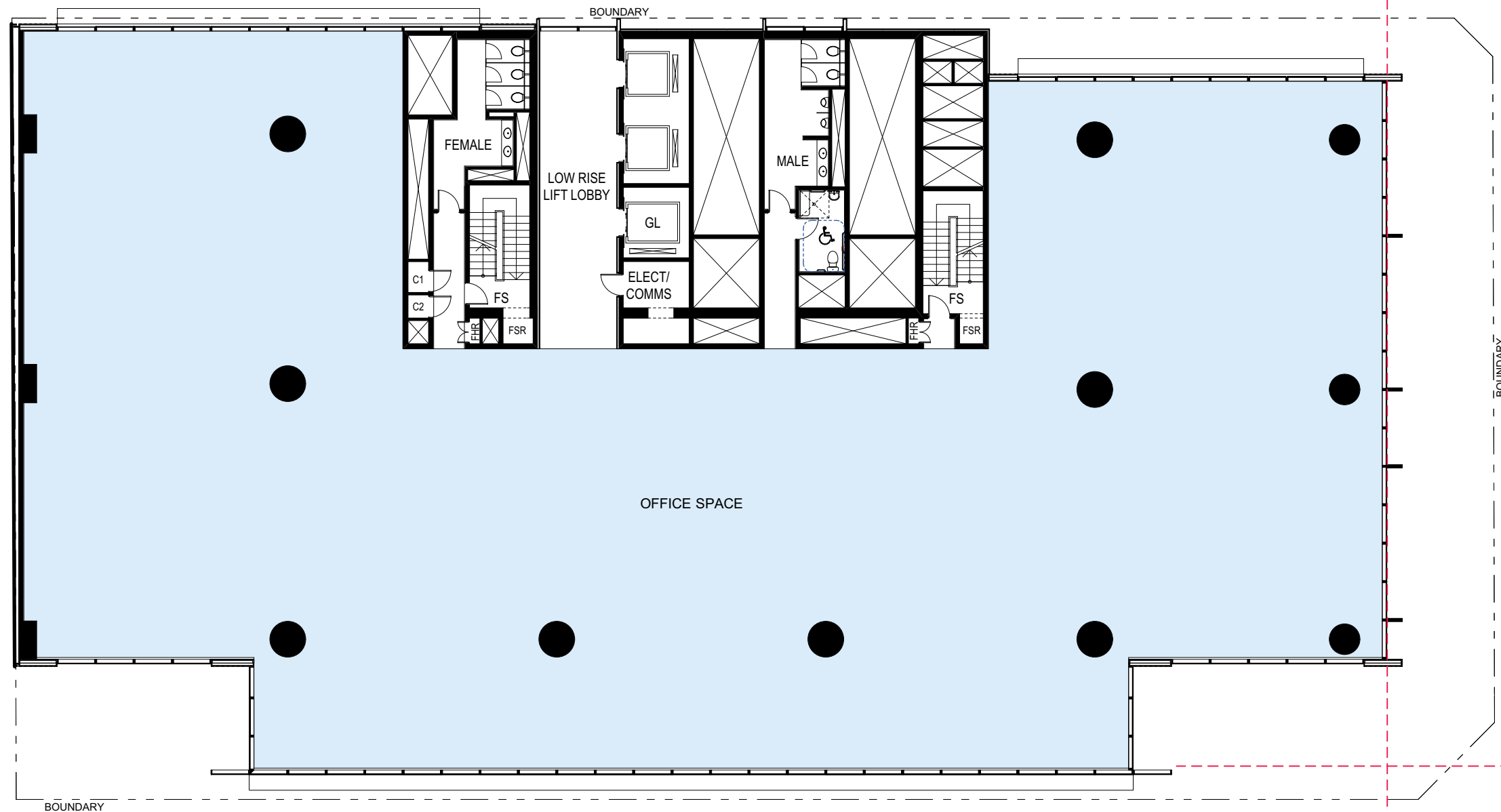
issue	amendment	date
A	SECTION 7SW APPLICATION	31.08.11



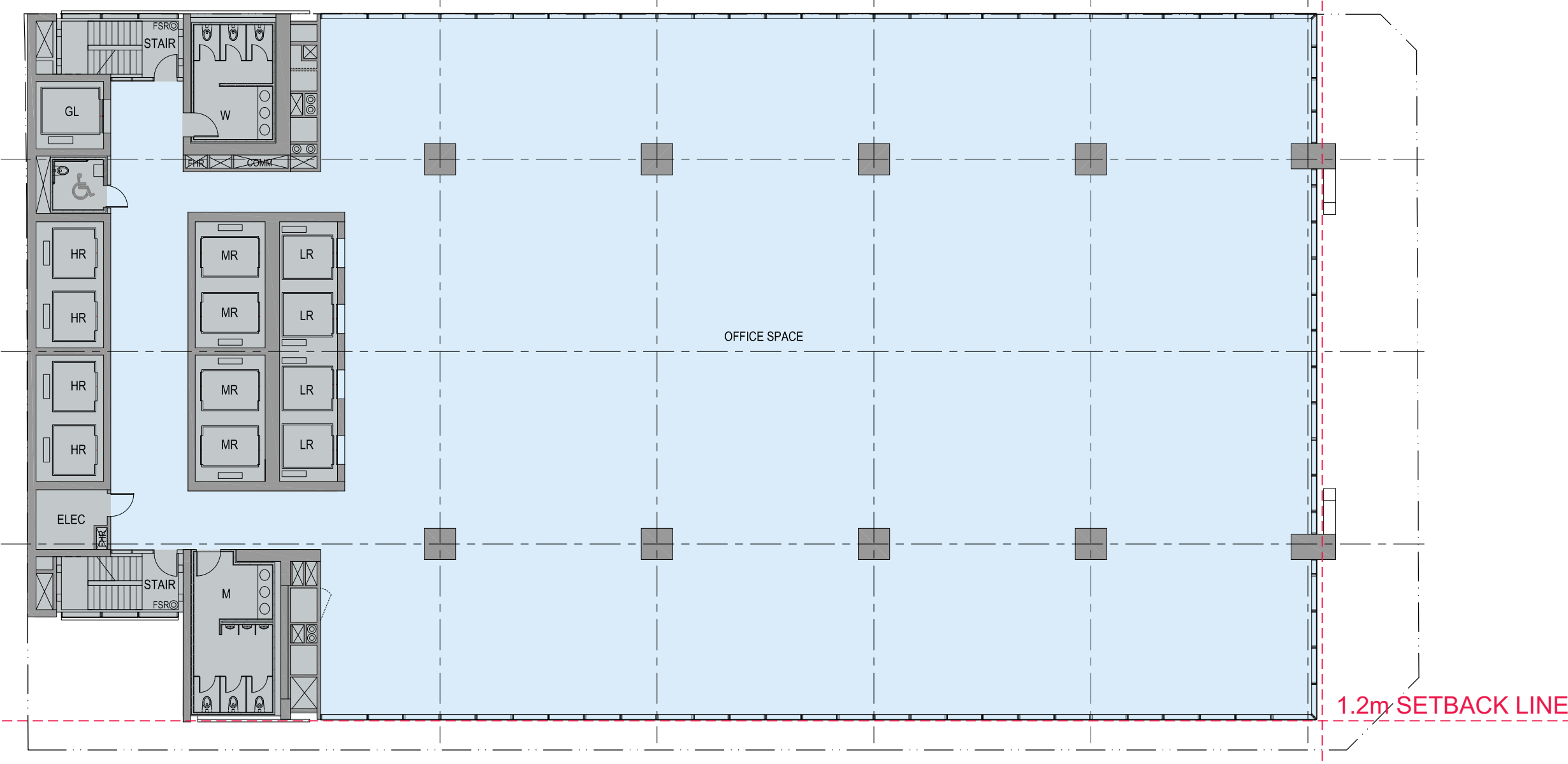
Approved: Level 20 - Low Rise Transfer Level
FFL: 108.20
GFA: 1036 m²
GBA: 1198 m²



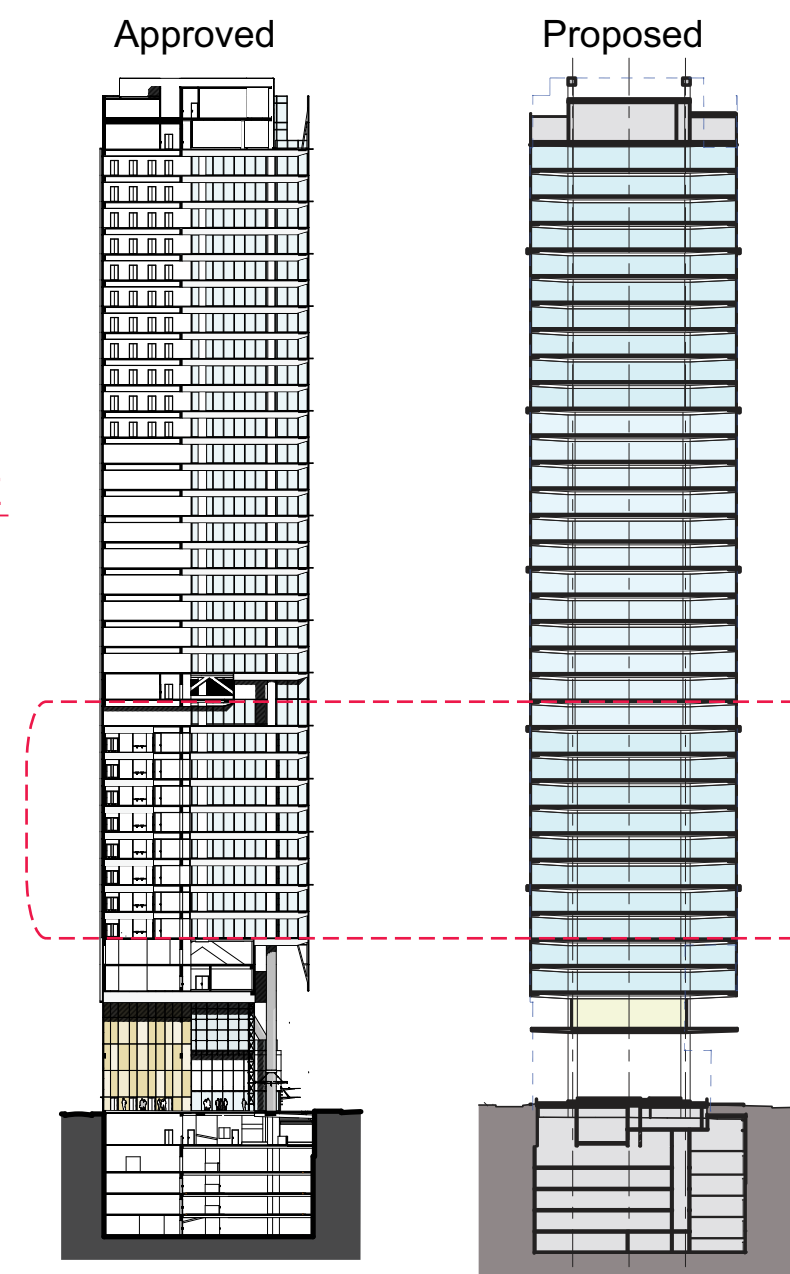
Proposed: Level 12 - Mid Rise/Lift Overrun
FFL: 108.00
GFA: 1342 m²
GBA: 1443 m²



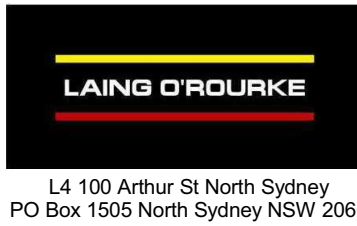
Approved: Level 12-19 - Low Rise Levels
L12 FFL: 78.20
8 Floor @ 3.75m
GFA: 1275 m²
GBA: 1414 m²



Proposed: Level 4-10 - Low Rise Levels
Level 11 - Low Rise Transfer Level (Plan Similar)
L4 FFL: 78.00
8 Floor @ 3.75m
GFA: 1342 m²
GBA: 1443 m²



client



architectus™

Architectus Sydney
Level 3 341 George Street
Sydney NSW 2000
T (61 2) 8252 8400
F (61 2) 8252 8600
sydney@architectus.com.au
ABN 11 098 489 448

project

100 Mount Street, North Sydney

drawing

Comparison with Approved Scheme -
Level 4-11 + Level 12

scale	1:400 @ A3, 1:200 @ A1	drawing no.	DA144
drawn	-	issue	A
checked	MC	project no	110059