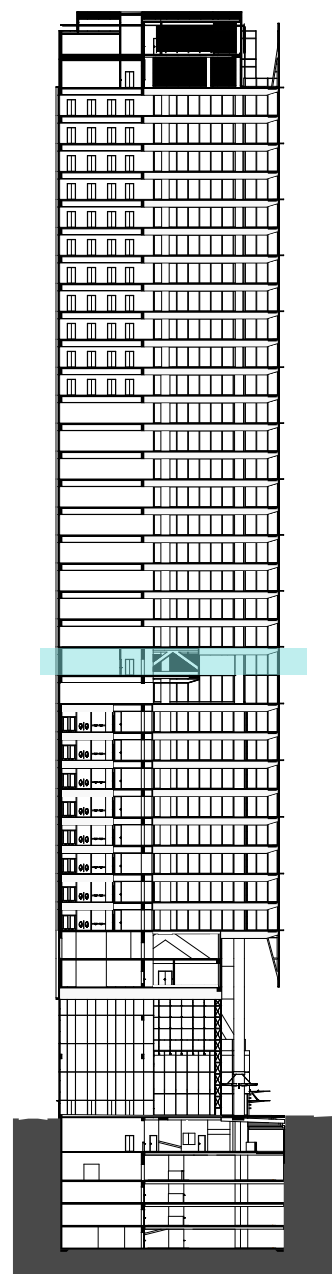
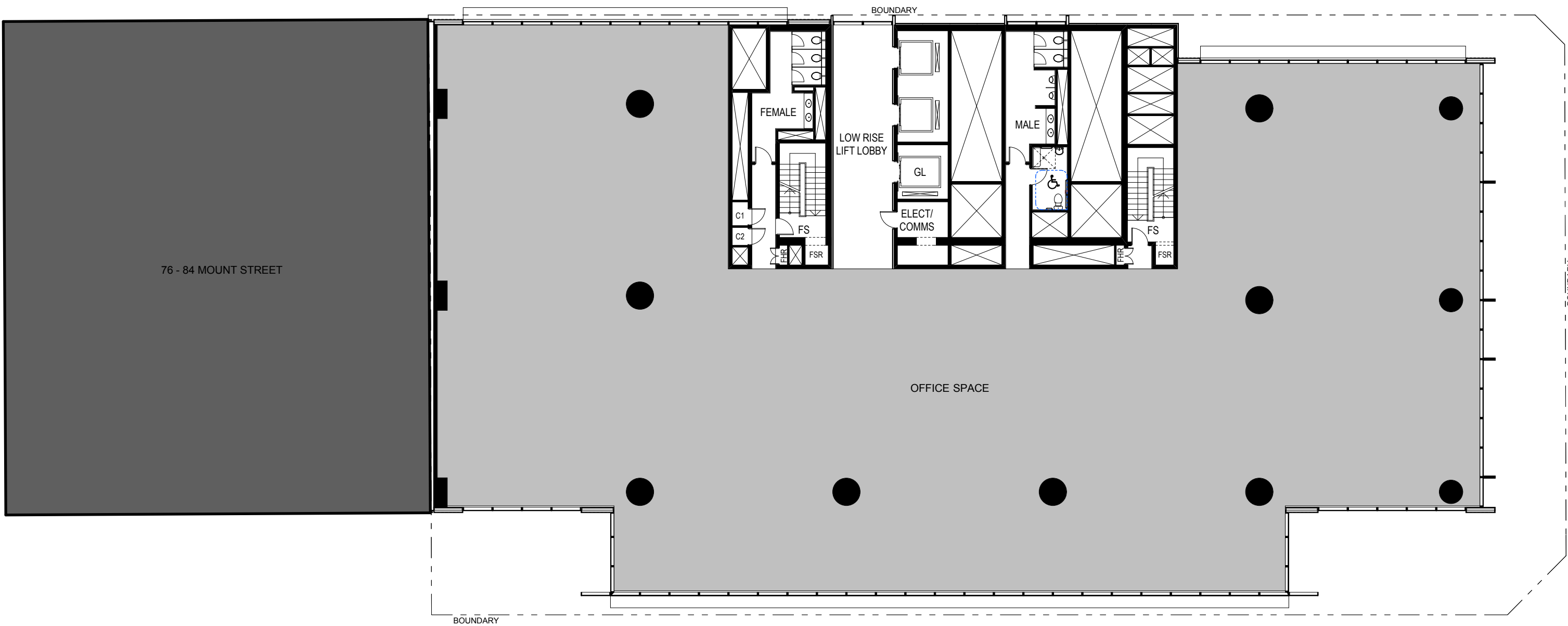
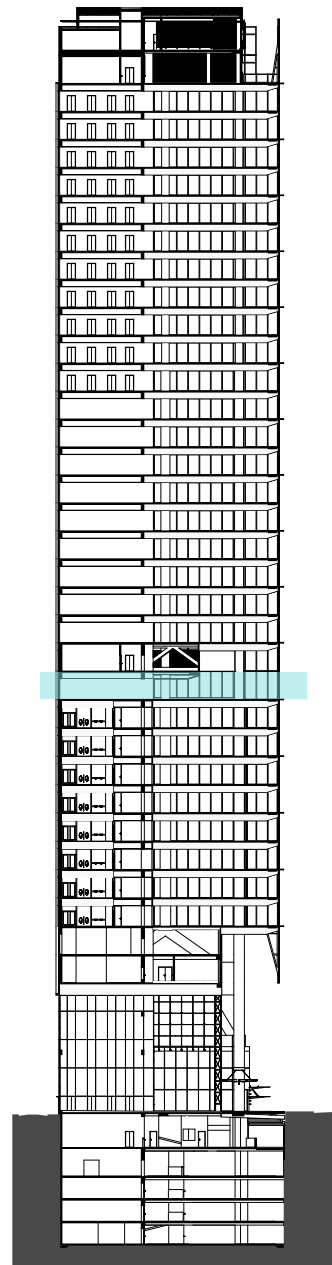


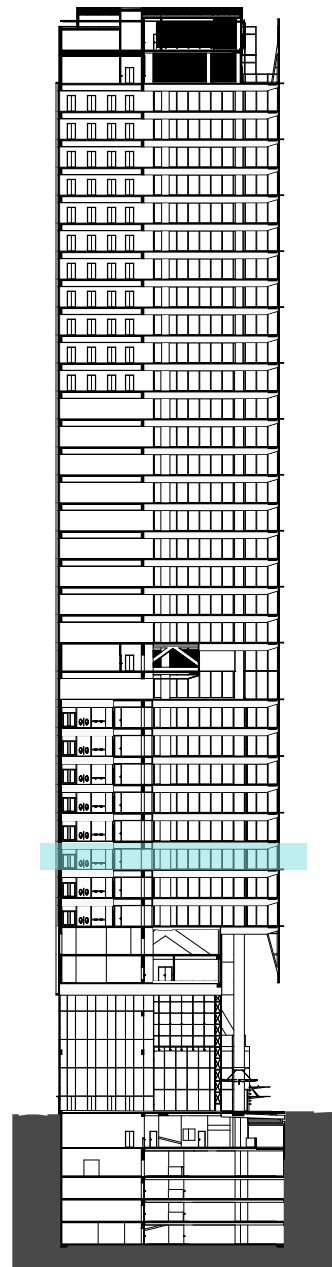
LEVEL 21 - MID PLANT



LEVEL 20 - LOW RISE TRANSFER FLOOR / SKY GARDEN



LEVEL 14 - TYPICAL LOW RISE



B A	15/12/09 15/05/09	PPR PART 3A SUBMISSION		CLIENT LAING O'ROURKE the property, the people, the vision LEVEL 4, 100 ARTHUR STREET NORTH SYDNEY, NSW 2060 P: 02 9903 0300 F: 02 9903 0333 W: www.laingorourke.com.au	ARCHITECTS RICE DAUBNEY ANALYSING CREATING AND IMPLEMENTING ARCHITECTURE 110 WALKER STREET NORTH SYDNEY 2060 T: 02 9556 2666 F: 02 9559 3015 rd@ricedaubney.com.au www.ricedaubney.com.au the rice daubney group (nsw) Pty Ltd - abn: 77 001 350 769 rice daubney trading trust - abn: 56 980 304 993	PROJECT 100 MOUNT ST DEVELOPMENT North Sydney NSW 2060	DRAWING TITLE LEVELS 14, 20 & 21 Low Rise and Mid Plant Floor Plans	SCALE: 1:200 @ A1 PROJECT NUMBER: 08001	DATE: MARCH 09 DRAWING NUMBER: DA 17	CHECKED: SMA REVISION: B