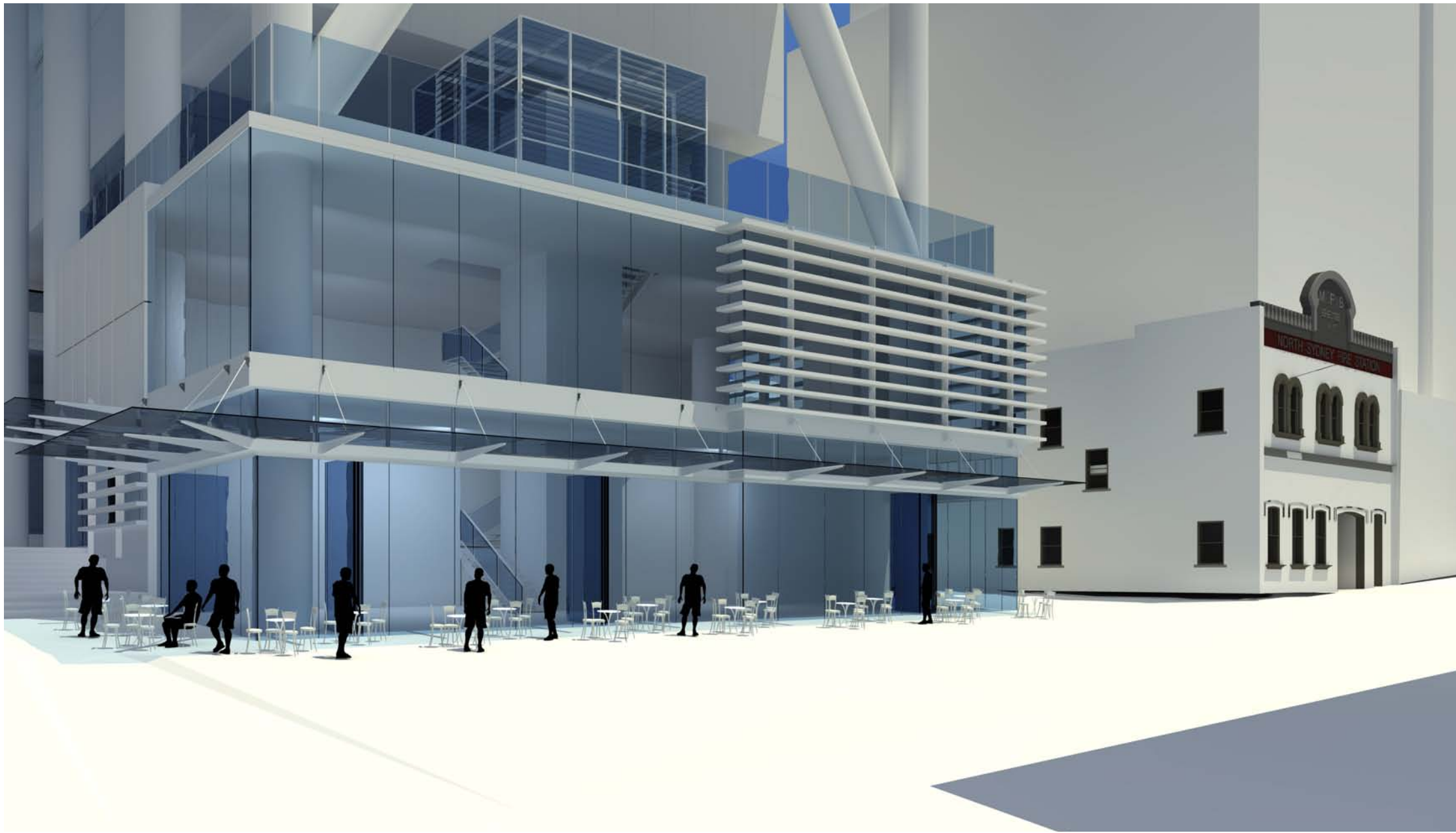




Photomontage - Corner of Walker and Spring Street



Perspective - corner Walker and Mount Street, relation with the Firehouse Hotel



Perspective - Walker Street, relation with the Firehouse Hotel

CLIENT			ARCHITECTS			PROJECT			DRAWING TITLE			SCALE			DATE			CHECKED		
LAING O'ROURKE			RICE DAUBNEY			100 MOUNT ST DEVELOPMENT			PHOTOMONTAGE AND PERSPECTIVES			N/A			MARCH 09			SMA		
LEVEL 4, 100 ARTHUR STREET NORTH SYDNEY NSW 2060 P: 02 9953 0300 F: 02 9953 0333 W: www.laingorourke.com.au			LEVEL 5, 90 MOUNT STREET NORTH SYDNEY NSW 2060 P: 02 9953 0300 F: 02 9953 0333 W: www.delmeghe.com.au			110 WALKER STREET   NORTH SYDNEY 2060 T: 02 9956 2066   F: 02 9959 3015 info@rice-daubney.com.au   www.rice-daubney.com.au the rice daubney group (nsw) Pty Ltd - abn: 77 001 350 769 rice daubney trading trust - abn: 56 880 304 993			PROJECT NUMBER: 08001			DRAWING NUMBER: DA 06			REVISION: A			THIS DOCUMENT IS THE COPYRIGHT OF RICE DAUBNEY (NSW) Pty Ltd. ALL INFORMATION ILLUSTRATED ON THIS DOCUMENT IS TO BE CHECKED AND VERIFIED ON SITE. IN THE EVENT OF DISCREPANCIES REFER TO ARCHITECT PRIOR TO COMMENCEMENT OF THE WORK. DO NOT SCALE DRAWINGS MANUALLY OR ELECTRONICALLY.		
No.	DATE	REVISION / ISSUE DETAILS																		