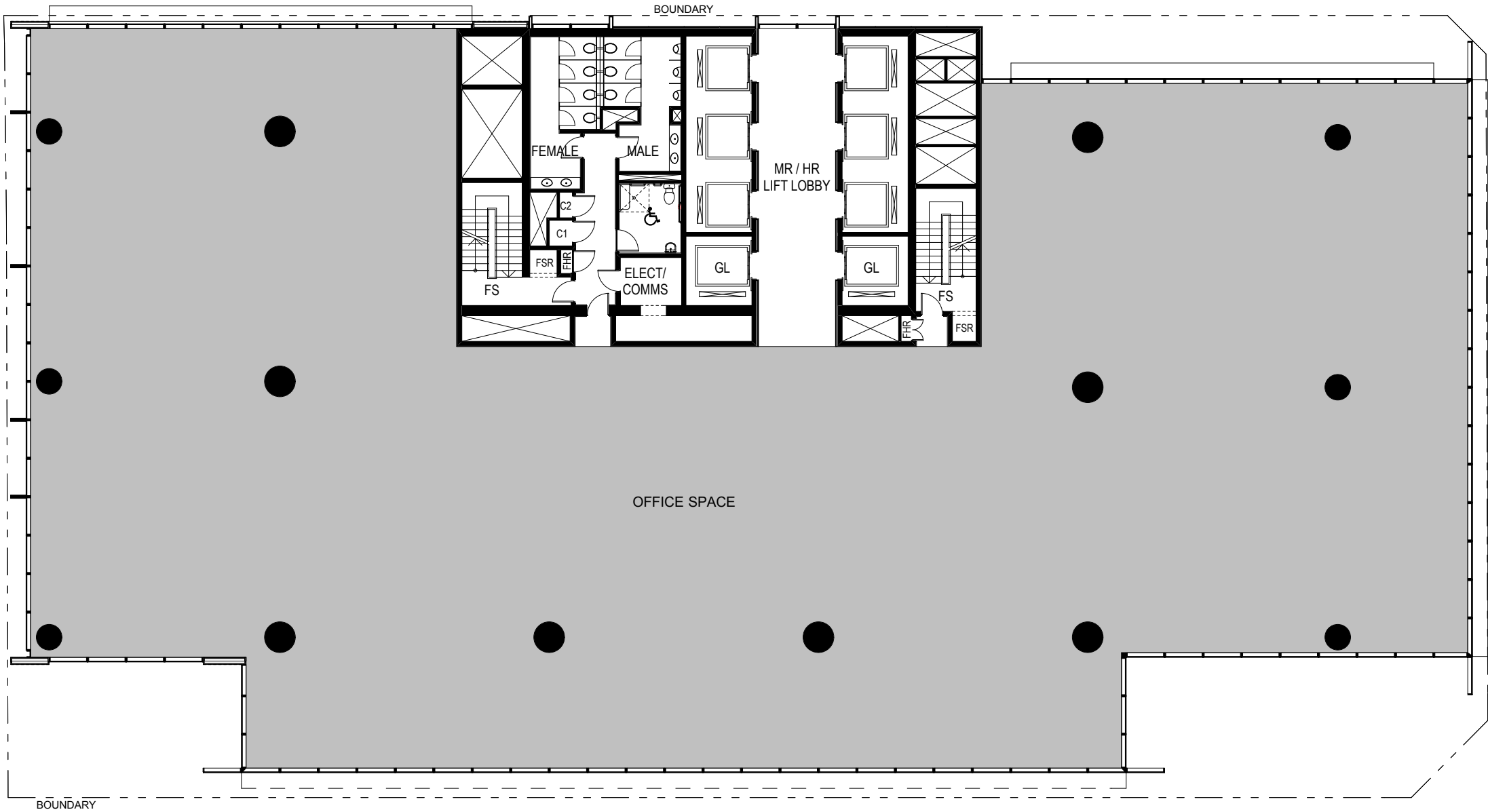
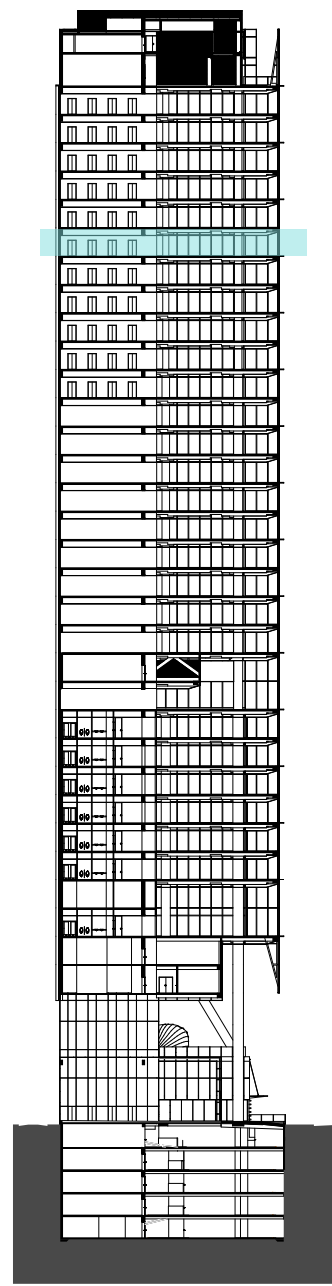
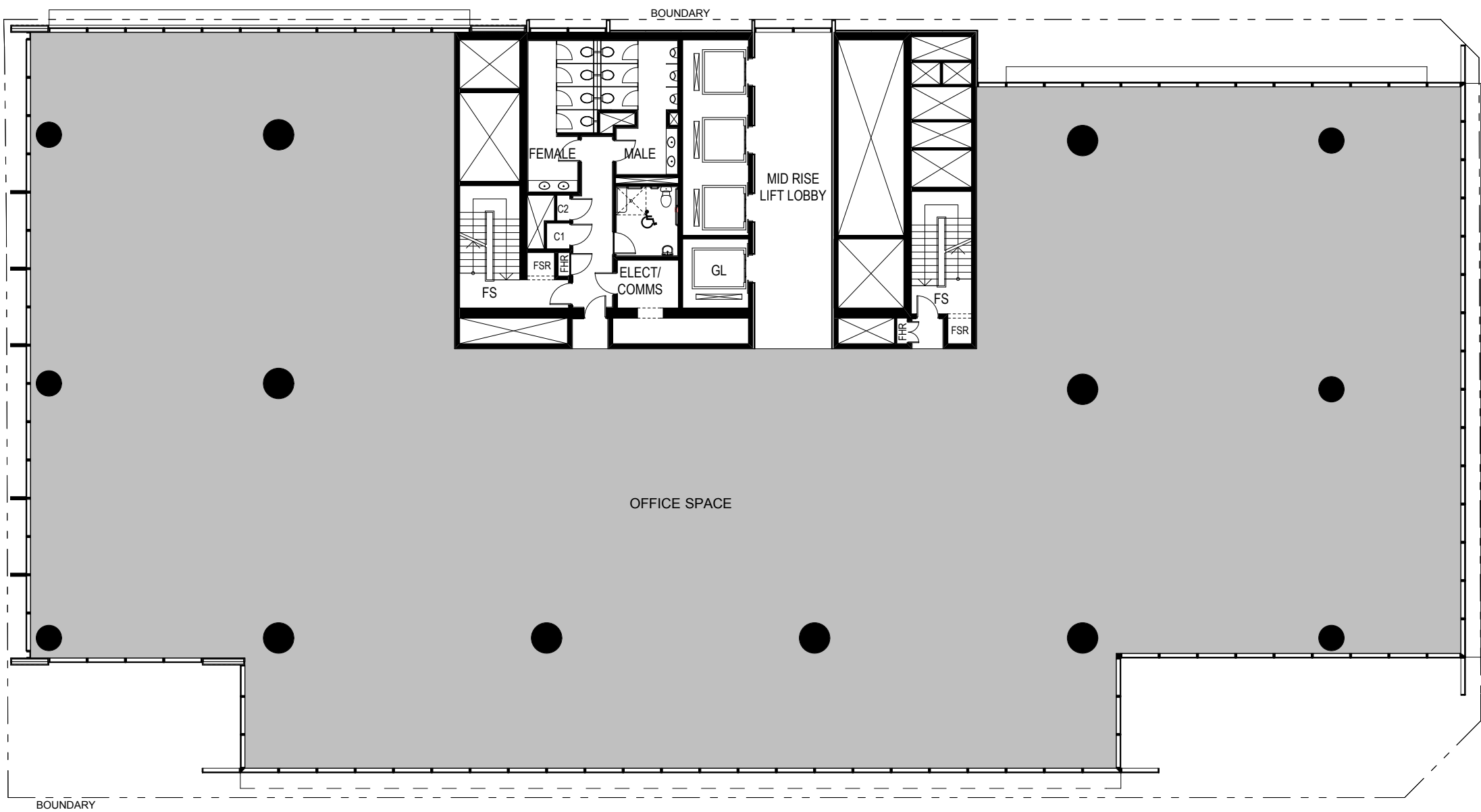
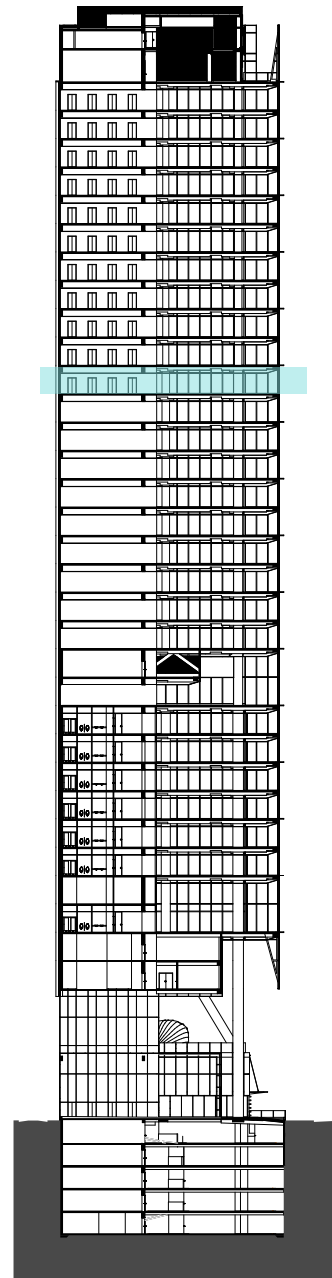




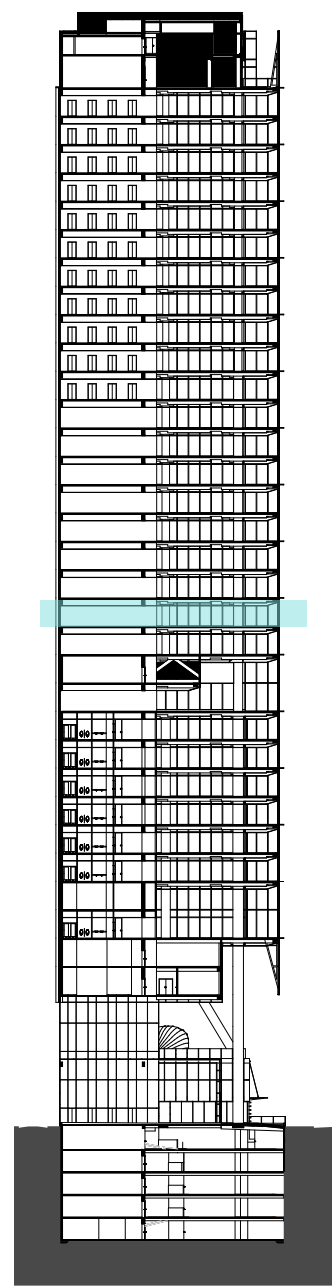
LEVEL 36 - TYPICAL HIGH RISE



LEVEL 31 - MID RISE TRANSFER FLOOR



LEVEL 23 - TYPICAL MID RISE



A	15/05/09	PART 3A SUBMISSION		CLIENT LAING O'ROURKE LEVEL 4, 100 ARTHUR STREET NORTH SYDNEY, NSW 2060 P: 02 9903 0300 F: 02 9903 0333 W: www.laingorourke.com.au	ARCHITECTS RICE DAUBNEY ANALYSING CREATING AND IMPLEMENTING ARCHITECTURE 110 WALKER STREET NORTH SYDNEY 2060 T: 02 9556 2666 F: 02 9559 3015 rd@ricedaubney.com.au www.ricedaubney.com.au the rice daubney group (nsw) Pty Ltd - abn: 77 001 350 769 rice daubney trading trust - abn: 56 880 304 993	PROJECT 100 MOUNT ST DEVELOPMENT North Sydney NSW 2060	DRAWING TITLE LEVELS 23, 31 & 36 Mid and High Rise Typical Floor Plans	SCALE: 1:200	DATE: MARCH 09	CHECKED: SMA
	No	DATE						PROJECT NUMBER: 08001	DRAWING NUMBER: DA 14	REVISION: A