

1 Denison Street

North Sydney NSW 2060

Drawing List

Drawing List - MOD 7

DA00.001	01	MP08-0238 MOD 7		Titlepage MOD 7	NTS
DA01.000	01	MP08-0238 MOD 7	General Arrangement Plan	Site Plan	1:500 @ A1
DA02.0B4	02	MP08-0238 MOD 7	General Arrangement Plan	Basement 04 - Parking	1:250 @ A1
DA02.0B3	02	MP08-0238 MOD 7	General Arrangement Plan	Basement 03 - Parking	1:250 @ A1
DA02.0B2	02	MP08-0238 MOD 7	General Arrangement Plan	Basement 02 - Parking	1:250 @ A1
DA02.0B1	02	MP08-0238 MOD 7	General Arrangement Plan	Basement 01 - Parking	1:250 @ A1
DA02.0LG	02	MP08-0238 MOD 7	General Arrangement Plan	Lower Ground Level - Loading	1:250 @ A1
DA03.000	01	MP08-0238 MOD 7	General Arrangement Plan	Ground Level	1:250 @ A1
DA03.0MZ	01	MP08-0238 MOD 7	General Arrangement Plan	Mezzanine	1:250 @ A1
DA03.001	01	MP08-0238 MOD 7	General Arrangement Plan	Level 01	1:250 @ A1
DA03.002	01	MP08-0238 MOD 7	General Arrangement Plan	Level 02 - Plant & Terrace	1:250 @ A1
DA03.003	01	MP08-0238 MOD 7	General Arrangement Plan	Level 03 - Typical Low Rise	1:250 @ A1
DA03.009	01	MP08-0238 MOD 7	General Arrangement Plan	Level 09 - Transfer Floor	1:250 @ A1
DA03.010	01	MP08-0238 MOD 7	General Arrangement Plan	Level 10 - Low Rise Overrun	1:250 @ A1
DA03.011	01	MP08-0238 MOD 7	General Arrangement Plan	Level 11 - Typical Mid Rise	1:250 @ A1
DA03.021	01	MP08-0238 MOD 7	General Arrangement Plan	Level 21 - Transfer Floor	1:250 @ A1
DA03.022	01	MP08-0238 MOD 7	General Arrangement Plan	Level 22 - Midrise Overrun	1:250 @ A1
DA03.023	01	MP08-0238 MOD 7	General Arrangement Plan	Level 23 - Lift Motor Room	1:250 @ A1
DA03.024	01	MP08-0238 MOD 7	General Arrangement Plan	Level 24 - Typical High Rise	1:250 @ A1
DA03.035	01	MP08-0238 MOD 7	General Arrangement Plan	Level 35 - High Rise Upper	1:250 @ A1
DA03.036	01	MP08-0238 MOD 7	General Arrangement Plan	Level 36 - Plant & Overrun	1:250 @ A1
DA03.037	01	MP08-0238 MOD 7	General Arrangement Plan	Level 37 - Upper Plant	1:250 @ A1
DA03.038	01	MP08-0238 MOD 7	General Arrangement Plan	Roof Level	1:250 @ A1
DA07.101	01	MP08-0238 MOD 7	Building Elevations	North Elevation	1:250 @ A1
DA07.102	01	MP08-0238 MOD 7	Building Elevations	East Elevation	1:250 @ A1
DA07.103	01	MP08-0238 MOD 7	Building Elevations	South Elevation	1:250 @ A1
DA07.104	01	MP08-0238 MOD 7	Building Elevations	West Elevation	1:250 @ A1
DA07.202	01	MP08-0238 MOD 7	Building Elevations	Detailed Street Elevation - Little Spring Street	1:125 @ A1
DA07.203	01	MP08-0238 MOD 7	Building Elevations	Detailed Street Elevation - Spring Street	1:125 @ A1
DA07.204	01	MP08-0238 MOD 7	Building Elevations	Detailed Street Elevation - Denison Street	1:125 @ A1
DA08.101	01	MP08-0238 MOD 7	Building Sections	A-A	1:250 @ A1
DA08.102	01	MP08-0238 MOD 7	Building Sections	B-B	1:250 @ A1
DA09.001	01	MP08-0238 MOD 7	Diagrams	Gross Floor Area Calculations 1/4	1:500 @ A1
DA09.002	01	MP08-0238 MOD 7	Diagrams	Gross Floor Area Calculations 2/4	1:500 @ A1
DA09.003	01	MP08-0238 MOD 7	Diagrams	Gross Floor Area Calculations 3/4	1:500 @ A1
DA09.004	01	MP08-0238 MOD 7	Diagrams	Gross Floor Area Calculations 4/4	1:500 @ A1
DA10.001	01	MP08-0238 MOD 7	Diagrams	Photomontage 1/2	NTS
DA10.002	01	MP08-0238 MOD 7	Diagrams	Photomontage 2/2	NTS



Client



Key

1 Denison Street
North Sydney, NSW 2060

Titlepage MOD 7

Check all dimensions and site conditions prior to commencement of any work, the purchase or ordering of any materials, fittings, plant, services or equipment and the preparation of shop drawings and or the fabrication of any components.
Do not scale drawings - refer to figured dimensions only. Any discrepancies shall immediately be referred to the architect for clarification.
All drawings may not be reproduced or distributed without prior permission from the architect.

Scale		@ A1	
Drawn	WH	Checked	JF
Project no.	s12055		
Status	Pre Section 75W		
Plot Date	10/11/2016 6:00:12 PM		
BIM	1DENISON_BS_ARCH		
Drawing no.	DA00.001	Revision	01

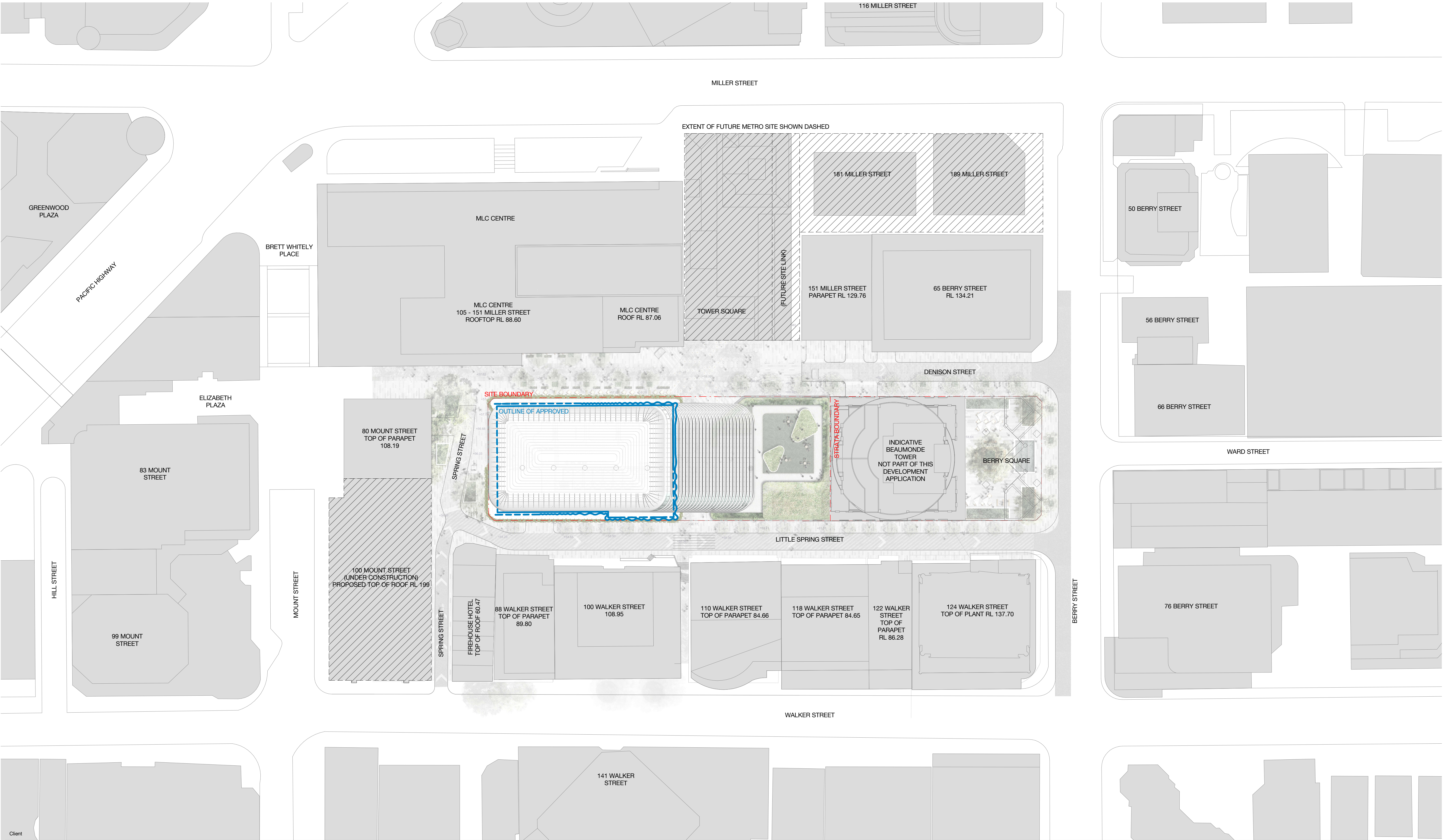
Melbourne 1 Nicholson Street
Melbourne VIC 3000 Australia
T 03 8664 6200 F 03 8664 6300
email mel@batesmart.com.au
http://www.batesmart.com.au

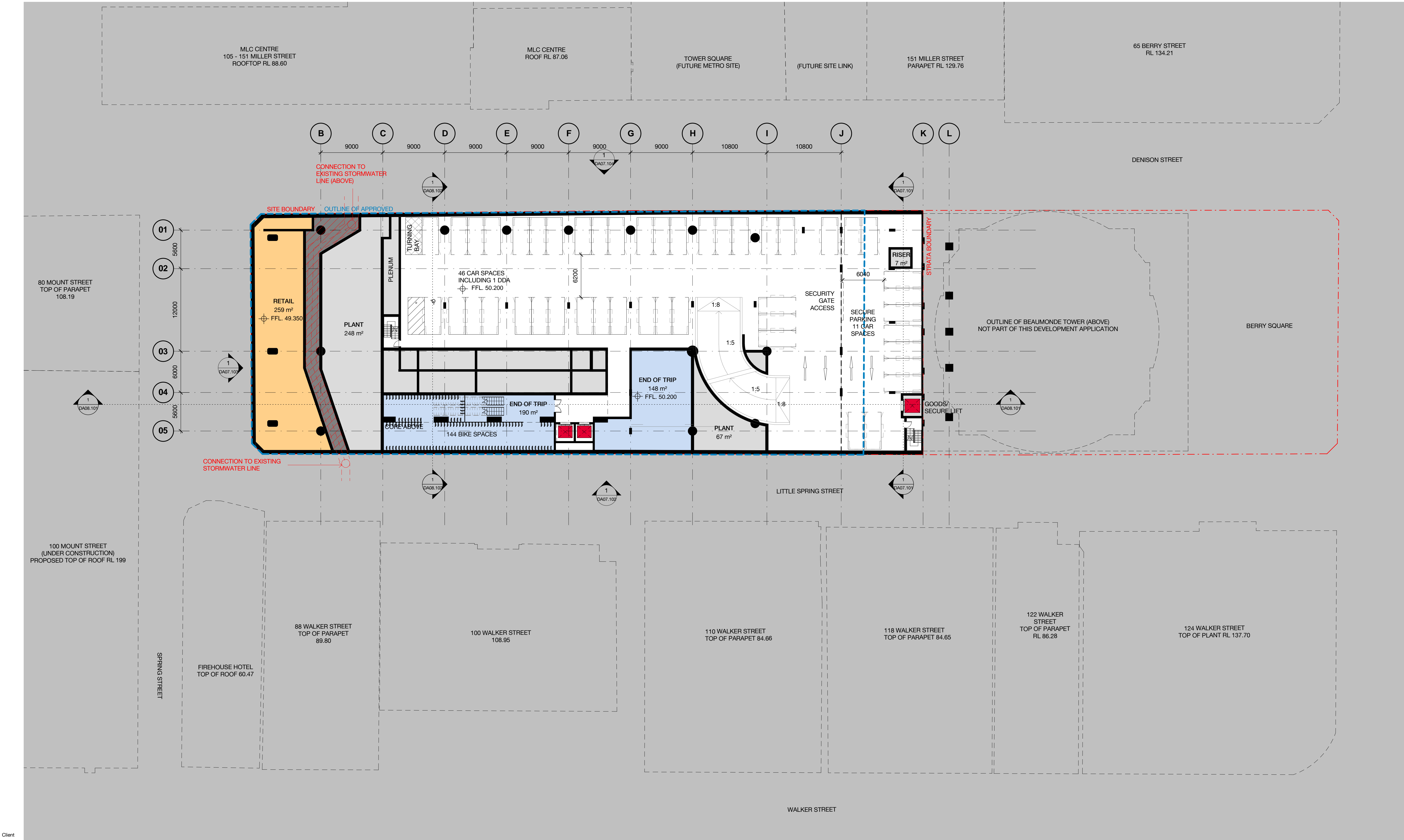
Sydney 43 Brisbane Street
Surry Hills NSW 2010 Australia
T 02 8354 5100 F 02 8354 5199
email syd@batesmart.com.au
http://www.batesmart.com.au

Bates Smart Pty Ltd ABN 70 004 999 400



01	11.11.16	MP08-0238 MOD 7	WH	JF
Revision	Date	Description	Initial	Checked





Client

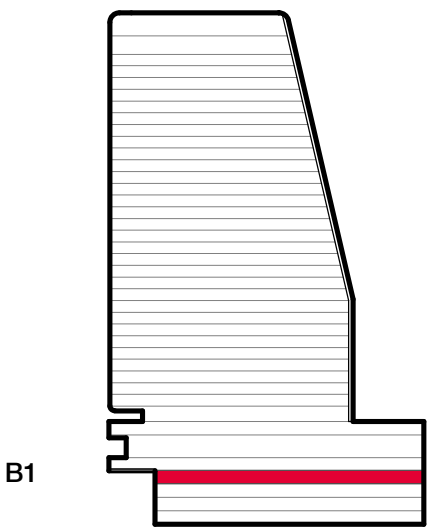


WINTEN
PROPERTY
GROUP

CARPARKING KEY
C - COURIER
L - LOADING
O - OFFICE
R - RETAIL
S - CAR SHARE

01	11.11.16	MP08-0238.MDD.6	WH	JF
Revision	Date	Description	Initial	Checked

Key



B1

1 Denison Street
North Sydney, NSW 2060
General Arrangement Plan
Basement 01 - Parking

Check all dimensions and site conditions prior to commencement of any work, the purchase or ordering of any materials, fittings, plant, services or equipment and the preparation of shop drawings and or the fabrication of any components.
Do not scale drawings - refer to figured dimensions only. Any discrepancies shall immediately be referred to the architect for clarification.
All drawings may not be reproduced or distributed without prior permission from the architect.



Scale	1 : 250	@ A1
Drawn	WH	Checked JF
Project no.	s12055	
Status	Pre Section 75W	
Plot Date	10/11/2016 3:00:05 PM	
BIM	1DENISON_BS_ARCH	
Drawing no.	DA02.0B1	Revision 01

Melbourne 1 Nicholson Street
Melbourne VIC 3000 Australia
T 03 8664 6200 F 03 8664 6300
email mel@batesmart.com.au
http://www.batesmart.com.au

Sydney 43 Brisbane Street
Surry Hills NSW 2010 Australia
T 02 8354 5100 F 02 8354 5199
email syd@batesmart.com.au
http://www.batesmart.com.au

Bates Smart Pty Ltd ABN 70 004 999 400

BATESSMART