



Cultural Heritage Assessment of Additional areas and infrastructure revisions

Addendum to Oct 2009 Cultural Heritage Assessment Report Googong Township Water Cycle Project

Navin Officer Heritage Consultants

14 September 2011

Addendum Report

This addendum report provides a cultural heritage assessment of two areas of anticipated development impact which were not detailed in the 2009 assessment of the Googong Township Water Cycle Project conducted by Navin Officer Heritage Consultants (NOHC) for CIC Australia (NOHC 2009b). The two additional assessment areas were identified recently by Manidis Roberts. This document acts as an addendum to the October 2009 assessment. For more detailed information regarding previous assessments, the reader is referred to the above report, and other previous reports listed in the References.

This addendum report concludes that there are no known Aboriginal or non-Aboriginal sites or areas of archaeological potential within the two additional areas of assessment, and that no further cultural heritage assessment is warranted or required prior to construction within this area.

Additional Areas and Infrastructure Revisions

Following a revision of the proposed location and alignment of the Bulk Water Pumping Station (BWPS), associated water main and access road, the NSW Department of Planning and Infrastructure has requested that a cultural heritage assessment of the area subject to the revision be undertaken, as part of the environmental assessment and approvals process under Part 3A of the *Environmental Planning and Assessment Act 1979*. The location of the new area subject to impact is shown in Figures 1 and 2. It comprises a traverse of approximately 1,130 m across the upper and mid-slopes of an elevated spurline which descends to the Queanbeyan River, approximately 500m to the northeast.

In addition, a small area, of the currently proposed Water Cycle Project, including the location of Sewage Pumping Station 2 (SPS2) was not detailed in the 2009 assessment and has been included within this addendum report. This area is approximately 3 hectares, and situated along the upper reaches of a minor tributary gully of Montgomery's Creek, which drains to the Queanbeyan River approximately 2km to the northeast (Figure 1).

Assessment

BWPS and associated pipeline and access road

Approximately half of this area has been subject to previous archaeological survey and cultural heritage assessment (Figure 2). The archaeological survey area for the original 2009 NOHC assessment of the Water Cycle Project (NOHC 2009b) included the proposed BWPS site, and the northern and southern quarter of the pipeline and access track alignment. No cultural heritage sites or areas of archaeological potential were recorded from these areas. This assessment included the field participation of local Aboriginal community representatives. No places of special or historical Aboriginal cultural significance were identified on the spurline. The 2009 survey noted that the crest and upper slopes of the subject spurline had been extensively disturbed as a result of the previous construction of the ACTEW Googong Water Treatment Plant.

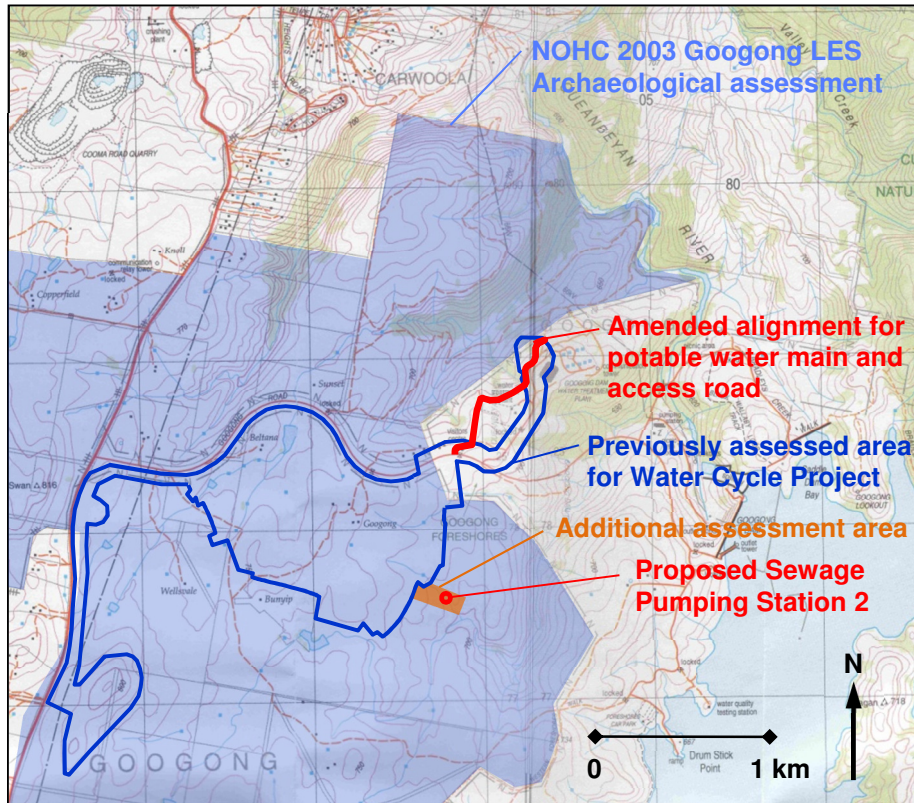


Figure 1 Location of the proposed infrastructure revision and additional assessment area, relative to the 2009 Googong Trunk Water and Recycled Water System study area (blue line) (Tuggeranong 8727-3S and Hoskinstown 8727-2S 1:25,000 topographic maps)

The revised BWPS site proposal is situated on moderately graded spurline mid-slopes. The local predictive model for Aboriginal site location classifies this landform context as having low archaeological sensitivity (NOHC 2003). This is due mostly to the lack of level, or relatively low gradient ground, and the relative distance to a permanent water source.

The middle portion of the proposed BWPS pipeline main and access track has not been subject to archaeological survey (Figure 2). The potential for Aboriginal or non-Aboriginal cultural heritage sites to be present within this area is assessed to be negligible given that:

- The areas has been subject to considerable ground surface disturbance given that the alignment follows an established and well formed vehicle track which defines the western edge of the previous disturbance from the Water Treatment Plant construction phase;
- Comparable micro-topographic contexts (upper slopes and break-of-slope contexts) in adjacent areas on the spurline, subject to previous archaeological survey have not revealed the presence of Aboriginal artefacts

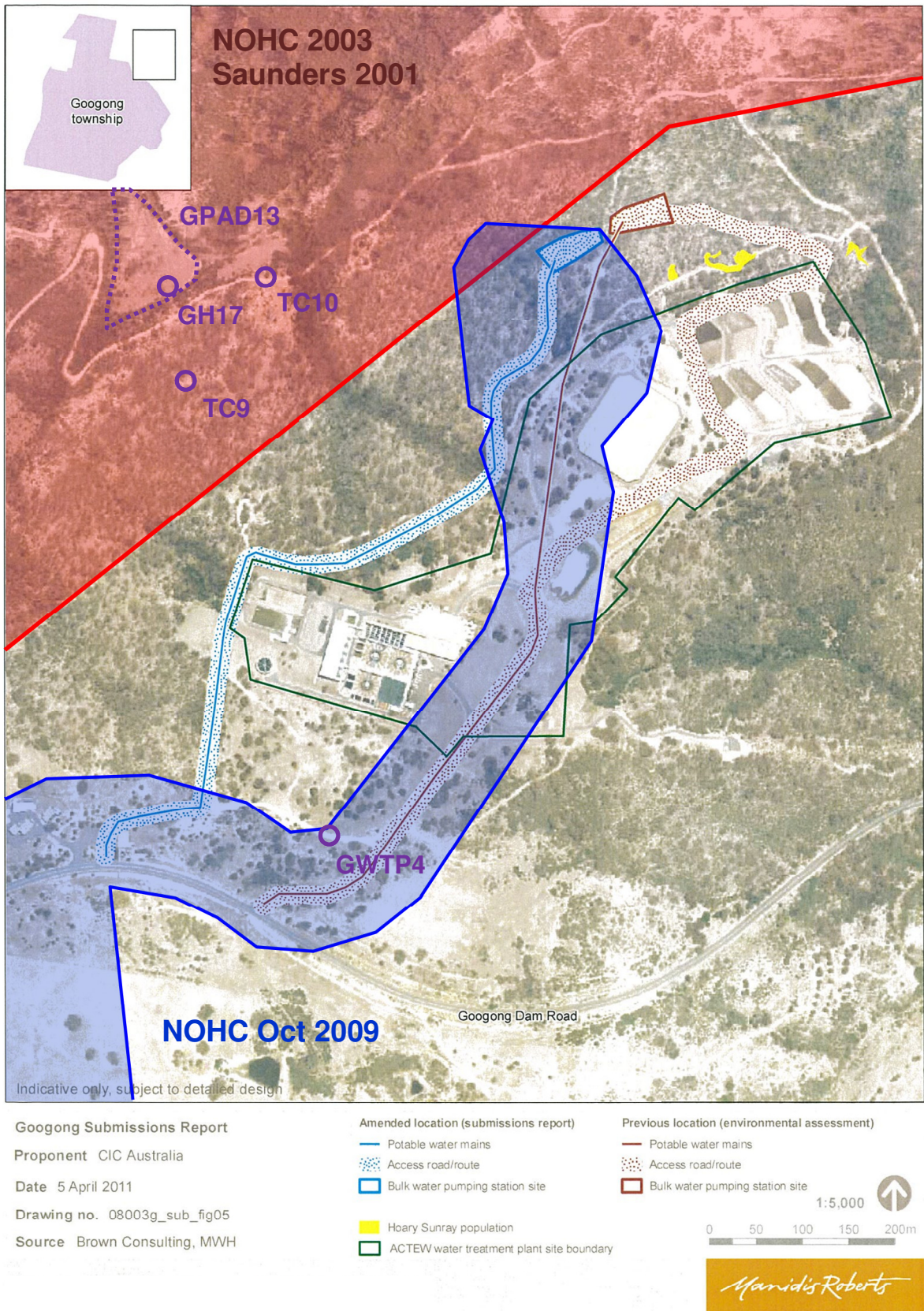


Figure 2 Location of previous and amended proposals for the Bulk Water Pumping Station (BWPS) and associated pipeline main and access road, relative to the area of previous cultural heritage assessments (red and blue infilled areas, survey reports identified in large font) and previously recorded cultural heritage sites (purple) (Base graphic provided by Manidis Roberts)



Additional Area Including SPS2

This area was subject to comprehensive archaeological survey during the 2003 Googong LES (NOHC 2003) (Figure 1). No sites or areas of archaeological potential have been identified within this additional area.

An isolated surface Aboriginal artefact (GA4) was located on the crest of a gently sloping minor spur, situated immediately adjacent, and to the south of the assessment area (refer to Figure 8.1 of the 2003 assessment). The 2003 assessment considered the GA4 location to have low archaeological significance. It was recommended that recovery of any surface artefacts be attempted prior to development disturbance, in order to manage impact to Aboriginal cultural values associated with any remaining artefacts (NOHC 2003:111-110).

The 2003 description of the GA4 site is as follows:

GA4 Isolated Find

GDA 0703769.6077507

This site comprises a single artefact located on a gently sloping spur crest with an easterly aspect, overlooking a small creek confluence. The artefact was recorded on top of the grass, evidently not *in situ*. Average surface visibility in the general area was approximately 1%. Local deposit is brown gravelly loam soil with moderate potential to contain additional artefacts and low to moderate potential to contain subsurface cultural material.

Artefact type	Raw material	Dimensions (mm)	Comments
split pebble	brown volcanic	170 x 90 x 55	no obvious signs of pitting, but edge damage along 1 margin

Conclusions

BWPS and associated pipeline and access road

There are no known Aboriginal or non-Aboriginal sites or areas of archaeological potential within this area.

Approximately half of this area has been subject to previous archaeological survey. The remaining portion follows an existing track platform and is considered to have negligible archaeological potential.

It is concluded that no further cultural heritage assessment is warranted, or required, prior to construction within this area.

Additional Area Including SPS2

This area has previously been subject to comprehensive archaeological survey and cultural heritage assessment as part of the NOHC 2003 LES cultural heritage assessment (NOHC 2003).

There are no known Aboriginal or non-Aboriginal sites or areas of archaeological potential within the area of assessment.

It is concluded that no further cultural heritage assessment is warranted or required prior to construction within this area.

A site of low archaeological significance (GA4) is situated immediately to the south of the assessment area. In the event that development impact to this adjacent area is anticipated, then it is recommended that the management strategy recommended in the NOHC 2003 assessment be followed – salvage collection of any surface artefacts present, prior to construction.



References

- Navin Officer Heritage Consultants (NOHC) 2003 Googong Local Environmental Study. Cultural Heritage Component. Report to Willana Associates Pty Ltd.
- Navin Officer Heritage Consultants (NOHC) 2009a Googong New Town Neighbourhood 1. An Aboriginal Archaeological Subsurface Testing and Collection Program. Report to Canberra Investment Corporation.
- Navin Officer Heritage Consultants (NOHC) 2009b Googong New Town Trunk Water and Recycled Water System, Aboriginal and Historical Archaeological Assessment. Report to Canberra Investment Corporation.
- Navin Officer Heritage Consultants (NOHC) 13 July 2010 Googong New Town Trunk Water and Recycled Water System, Cultural Heritage Assessment of Additional Temporary Reservoir Proposal. Addendum to October 2009 Assessment Report.
- Saunders, P 2001 Talpa Crest Aboriginal and European Cultural Heritage Survey. Unpublished report by Archaeological Heritage Surveys to Bill Swan and Associates Pty Ltd.