



## **Asbestos Materials Re-Inspection Report**

### **Northern Sydney Central Coast Area Health Service**

#### **Labelling Updated Version**



**Hornsby Ku-ring-gai Hospital  
Palmerston Road, Hornsby NSW**

#### **Building 6**

**November 2010**

**Our Ref: SN0062: 81691A**

---

Noel Arnold & Associates Pty Ltd  
Level 2, 11 Khartoum Road  
North Ryde NSW 2113  
Ph: (02) 9889 1800 Fax: (02) 9889 1811  
[www.noel-arnold.com.au](http://www.noel-arnold.com.au)

---

SN0062: KF

81691 Hornsby Ku-ring-gai Hospital Asbestos Materials Re-Inspection Nov10 - Label Update

■ Melbourne ■ Sydney ■ Canberra ■ Brisbane

***Practical Solutions***

---

**Asbestos Materials Register****Building 6 – Social Work/ Disused Maternity Building****Hornsby Ku-ring-gai Hospital, Palmerston Road, Hornsby NSW****Date:** 27th April to 1st June 2010**Assessed by:** Kimberley Femia and Hugh McMullen

Location Item Description Comments	Sample No.	Sample Status	Photo No.	Extent	Condition	Friability	Disturb. Potential	Risk Status	Re-inspect Date	Control Priority	Control Recommendation	Works Complete (Date/ Name)
<b>Exterior</b>												
Godfrey Ward Eaves Fibre cement sheeting	Previously sampled by NAA 66419-6-08	Positive	55	~100m <sup>2</sup>	Good	Non-Friable	Low	Low	Jun 2011	4	Maintain in good condition. Remove by a licensed asbestos contractor prior to refurbishment/ demolition works.	Labelled Nov 2010
Storey Ward Northern wall cladding below windows Compressed fibre cement sheeting	Previously sampled by NAA 66419-6-09	Positive	56	~50m <sup>2</sup>	Good	Non-Friable	Low	Low	Jun 2011	4	Maintain in good condition. Remove by a licensed asbestos contractor prior to refurbishment/ demolition works.	Labelled Nov 2010
Storey Ward, Northern Annex, Fire exit Infill panel above and below windows Fibre cement sheeting	Previously sampled by NAA 66419-6-10	Positive	57	~10m <sup>2</sup>	Good	Non-Friable	Low	Low	Jun 2011	4	Maintain in good condition. Remove by a licensed asbestos contractor prior to refurbishment/ demolition works.	Labelled Nov 2010
Eastern side, Nursing Unit entrance Infill panels above and below windows Fibre cement sheeting	Previously sampled by NAA 66419-6-11	Positive	58	~2m <sup>2</sup>	Good	Non-Friable	Low	Low	Jun 2011	4	Maintain in good condition. Remove by a licensed asbestos contractor prior to refurbishment/ demolition works.	Labelled Nov 2010

November 2010

Location Item Description Comments	Sample No.	Sample Status	Photo No.	Extent	Condition	Friability	Disturb. Potential	Risk Status	Re-Inspect Date	Control Priority	Control Recommendation	Works Complete (Date/ Name)
South eastern A/C Plant Room Wall cladding Corrugated fibre cement sheeting	Previously sampled by NAA Same as 66419-6-05	Negative	-	-	-	-	-	-	-	-	-	-
Delivery Ward, Fire exit Infill panels Fibre cement sheeting	Previously sampled by NAA 66419-6-13	Positive	59	~4 m <sup>2</sup>	Good	Non-Friable	Low	Low	Jun 2011	4	Maintain in good condition. Remove by a licensed asbestos contractor prior to refurbishment/ demolition works.	Labelled Nov 2010
Western entrance Internal wall lining Fibre cement sheeting	Previously sampled by NAA 66419-6-04	Negative	-	-	-	-	-	-	-	-	-	-
Western entrance External wall lining Corrugated fibre cement sheeting	Previously sampled by NAA 66419-6-05	Negative	-	-	-	-	-	-	-	-	-	-
Western Entrance Awning Fibre cement sheeting	Previously sampled by NAA 34641-12	Negative	-	-	-	-	-	-	-	-	-	-
Surrounding Building Eaves Fibre cement sheeting *Not sampled due to height restrictions	-	Suspected Positive	60	>200m <sup>2</sup>	Good	Non-Friable	Low	Low	Jun 2011	4	Confirm status. Maintain in good condition. Remove by a licensed asbestos contractor prior to refurbishment/ demolition works.	Labelled Nov 2010

November 2010

Location Item Description Comments	Sample No.	Sample Status	Photo No.	Extent	Condition	Friability	Disturb. Potential	Risk Status	Re-inspect Date	Control Priority	Control Recommendation	Works Complete (Date/ Name)
Southern entrance Ceiling Fibre cement sheeting	Previously sampled by NAA Same as 34641-11	Assumed Negative	-	-	-	-	-	-	-	-	-	-
Southern entrance Wall lining Fibre cement sheeting	Previously sampled by NAA Same as 34641-11	Assumed Negative	-	-	-	-	-	-	-	-	-	-
Ground Level, Eastern side Wall cladding Fibre cement sheeting	81691-40	Positive	61	~30m <sup>2</sup>	Good	Non-Friable	Low	Low	Jun 2011	4	Maintain in good condition. Remove by a licensed asbestos contractor prior to refurbishment/ demolition works.	Labelled Nov 2010
Level 1, Southern side Wall cladding Fibre cement sheeting *Not sampled due to height restrictions	Same as 81691-40	Assumed Positive	62	~30m <sup>2</sup>	Good	Non-Friable	Low	Low	Jun 2011	4	Maintain in good condition. Remove by a licensed asbestos contractor prior to refurbishment/ demolition works.	Labelled Nov 2010
Surrounding Building Infill panels above and below windows Fibre cement sheeting	81691-41	Positive	63	~50m <sup>2</sup>	Good	Non-Friable	Low	Low	Jun 2011	4	Maintain in good condition. Remove by a licensed asbestos contractor prior to refurbishment/ demolition works.	Labelled Nov 2010
Central Annex Eaves Fibre cement sheeting	Previously sampled by NAA 34641-08	Positive	64	~25 m <sup>2</sup>	Good	Non-Friable	Low	Low	Jun 2011	4	Maintain in good condition. Remove by a licensed asbestos contractor prior to refurbishment/ demolition works.	Labelled Nov 2010

November 2010

Location Item Description Comments	Sample No.	Sample Status	Photo No.	Extent	Condition	Friability	Disturb. Potential	Risk Status	Re-Inspect Date	Control Priority	Control Recommendation	Works Complete (Date/ Name)
Southern entrance Ceiling Fibre cement sheeting	Previously sampled by NAA Same as 34641-11	Assumed Negative	-	-	-	-	-	-	-	-	-	
<b>Exterior - Plant Rooms</b>												
South eastern A/C Plant Room Eastern guttering Moulded fibre cement	81691-39	Positive	65	~1m <sup>2</sup>	Good	Non-Friable	Low	Low	Jun 2011	4	Maintain in good condition. Remove by a licensed asbestos contractor prior to refurbishment/ demolition works.	Labelled Nov 2010
South eastern A/C Plant Room, Wall lining Fibre cement sheeting	Previously sampled by NAA 66419-6-12	Positive	66	~10m <sup>2</sup>	Good	Non-Friable	Low	Low	Jun 2011	4	Maintain in good condition. Remove by a licensed asbestos contractor prior to refurbishment/ demolition works.	Labelled Nov 2010
Plant Rooms Roof Fibre cement sheeting *Not located at time of inspection	-	-	-	-	-	-	-	-	-	-	Suspected removed. No documentation supplied at the time of the inspection	
<b>Interior - Plant Rooms</b>												
Plant Room, Walls Pipe work Pipe lagging *Not located at time of inspection	-	-	-	-	-	-	-	-	-	-	-	
South eastern A/C Plant Room, Interior Western wall Electrical Distribution Panel Electrical backing board	81691-37	Negative	-	-	-	-	-	-	-	-	-	



November 2010

Location Item Description Comments	Sample No.	Sample Status	Photo No.	Extent	Condition	Friability	Disturb. Potential	Risk Status	Re-inspect Date	Control Priority	Control Recommendation	Works Complete (Date/ Name)
South eastern A/C Plant Room, Upper Level Interior Northern wall Electrical Distribution Panel Electrical backing board	81691-38	Positive	67	1 unit	Good	Non-Friable	Low	Low	Jun 2011	4	Maintain in good condition. Remove by a licensed asbestos contractor prior to refurbishment/ demolition works.	Labelled v 2010
<b>Subfloor</b>												
Throughout Pipe work Pipe lagging	Previously sampled by NAA Same as 34641-31	Assumed Positive	68	Unknown	Fair	Friable	Med	High	Dec 2010	2	Restrict access. Maintain in good condition. Remove by an AS-I licensed asbestos contractor prior to refurbishment/ demolition works.	Labelled Nov 2010
Beneath Nursing Unit Managers Office, Pipe work Pipe lagging	Previously sampled by NAA 34641-31	Positive	69	~5m	Fair	Friable	Med	High	Dec 2010	2	Restrict access. Maintain in good condition. Remove by an AS-I licensed asbestos contractor prior to refurbishment/ demolition works.	Labelled Nov 2010
Beneath Old Nursing Unit Managers Office, adjacent Reception *No access at time of inspection.	-	-	-	-	-	-	-	-	-	-	-	-
<b>Interior - Ground Level</b>												
Throughout Electrical Distribution Cupboards Electrical backing board *Not sampled due to live electricity	-	Suspected Positive	70	~4 units	Good	Non-Friable	Low	Low	Jun 2011	4	Confirm status. Maintain in good condition. Remove by a licensed asbestos contractor prior to refurbishment/ demolition works.	Labelled Nov 2010

November 2010

Location Item Description Comments	Sample No.	Sample Status	Photo No.	Extent	Condition	Friability	Disturb. Potential	Risk Status	Re-inspect Date	Control Priority	Control Recommendation	Works Complete (Date/ Name)
Storey Ward, Eastern Lounge/Sunroom Infill panels above and below windows Fibre cement sheeting	Previously sampled by NAA 66419-6-01	Positive	71	~10m <sup>2</sup>	Good	Non-Friable	Low	Low	Jun 2011	4	Maintain in good condition. Remove by a licensed asbestos contractor prior to refurbishment/ demolition works.	Labelled Nov 2010
Storey Ward, Eastern Lounge/Sunroom Southern wall lining Fibre cement sheeting	Previously sampled by NAA Same as 66419-6-09	Assumed Positive	72	~5m <sup>2</sup>	Good	Non-Friable	Low	Low	Jun 2011	4	Maintain in good condition. Remove by a licensed asbestos contractor prior to refurbishment/ demolition works.	Labelled Nov 2010
Storey Ward, Eastern stairs Flooring Cream vinyl floor tiles	Previously sampled by NAA 66419-6-06A	Positive	73	~10m <sup>2</sup>	Good	Non-Friable	Low	Low	Jun 2011	4	Maintain in good condition. Remove by a licensed asbestos contractor prior to refurbishment/ demolition works.	Labelled Nov 2010
Storey Ward, Eastern stairs Flooring Amber adhesive attached to underside of sample 66419-6-06A	Previously sampled by NAA 66419-6-06B	Negative	-	-	-	-	-	-	-	-	-	
Storey Ward, Room 9, Ensuite, Wall lining Fibre cement sheeting	Previously sampled by NAA 66419-6-02	Negative	-	-	-	-	-	-	-	-	-	
Malcolm Ward, Kitchen Sink pad Bituminous pad	81691-42A	Negative	-	-	-	-	-	-	-	-	-	

November 2010

Location Item Description Comments	Sample No.	Sample Status	Photo No.	Extent	Condition	Friability	Disturb. Potential	Risk Status	Re-inspect Date	Control Priority	Control Recommendation	Works Complete (Date/ Name)
Malcolm Ward, Kitchen Sink pad Bituminous adhesive attached to the upper-side of sample 81691-42A	81691-42B	Positive	74	<1m <sup>2</sup>	Good	Non-Friable	Low	Low	Jun 2011	4	Maintain in good condition. Remove by a licensed asbestos contractor prior to refurbishment/ demolition works.	Labelled Nov 2010
Maternity Ward Training Room Window infill panel adjacent A/C unit Fibre cement sheeting	81691-44	Negative	-	-	-	-	-	-	-	-	-	
Birthing Unit, Eastern side of corridor, Office adjacent Room 1, Ceiling space, Toilet cistern Moulded fibre cement	81691-45	Positive	75	1 unit	Good	Non-Friable	Low	Low	Jun 2011	4	Maintain in good condition. Remove by a licensed asbestos contractor prior to refurbishment/ demolition works.	Labelled Nov 2010
Birthing Unit, Rooms 1, 2, 3 & 4 Storage Rooms Wall lining Fibre cement sheeting	81691-46	Negative	-	-	-	-	-	-	-	-	-	
Birthing Unit, Fire stairs exit, Flooring beneath new vinyl sheeting Green vinyl sheeting	81691-47	Negative	-	-	-	-	-	-	-	-	-	
Godfrey Ward, Electrical Switch Room, Beneath Northern stairs Electrical Distribution Panels Electrical backing boards *Not sampled due to live electricity	-	Suspected Positive	76	3 units	Good	Non-Friable	Low	Low	Jun 2011	4	Confirm status. Maintain in good condition. Remove by a licensed asbestos contractor prior to refurbishment/ demolition works.	Labelled Nov 2010



November 2010

Location Item Description Comments	Sample No.	Sample Status	Photo No.	Extent	Condition	Friability	Disturb. Potential	Risk Status	Re-inspect Date	Control Priority	Control Recommendation	Works Complete (Date/ Name)
Storey Ward, Rooms 1,2,3,10 & 11, Bathroom Wall lining Fibre cement sheeting	Previously sampled by NAA Same as 66419-6-02	Assumed Negative	-	-	-	-	-	-	-	-	-	
Storey Ward, Room 11 Infill panels below window Fibre cement sheeting	Previously sampled by NAA 66419-6-03	Positive	77	~4m <sup>2</sup>	Good	Non-Friable	Low	Low	Jun 2011	4	Maintain in good condition. Remove by a licensed asbestos contractor prior to refurbishment/ demolition works.	Labelled Nov 2010
Storey Ward, Kitchen area adjacent door Wall lining Fibre cement sheeting	Previously sampled by NAA 34641-06	Positive	78	~1m <sup>2</sup>	Good	Non-Friable	Med	Low	Jun 2011	4	Maintain in good condition. Remove by a licensed asbestos contractor prior to refurbishment/ demolition works.	Labelled Nov 2010
Staff area, Surrounding Doorways Wall lining Fibre cement sheeting	Previously sampled by NAA 34641-10	Negative	-	-	-	-	-	-	-	-	-	
Corridors, Throughout Fire doors Core insulation *Not sampled due to encapsulation of material	-	Suspected Positive	79	~20 units	Good	Friable	Med	Low	Jun 2011	3	Confirm status. Maintain in good condition. Remove by a AS-1 licensed asbestos contractor prior to refurbishment/ demolition works	Labelled Nov 2010
Godfrey Ward, Adjacent entrance to Malcolm Ward Flooring at fire stairs Grey vinyl floor tiles	Previously sampled by NAA 66419-6-07A	Positive	80	~3m <sup>2</sup>	Good	Non-Friable	Low	Low	Jun 2011	4	Maintain in good condition. Remove by a licensed asbestos contractor prior to refurbishment/ demolition works.	Labelled Nov 2010

November 2010

Location Item Description Comments	Sample No.	Sample Status	Photo No.	Extent	Condition	Friability	Disturb. Potential	Risk Status	Re-Inspect Date	Control Priority	Control Recommendation	Works Complete (Date/ Name)
Godfrey Ward, Adjacent entrance to Malcolm Ward Flooring at fire stairs Amber adhesive and grey millboard backing attached to underside of sample 66419-6-07A	Previously sampled by NAA 66419-6-07B	Negative	-	-	-	-	-	-	-	-	-	
Godfrey Ward Radiator handles Internal Insulation *No sample taken due to encapsulation of material	-	Suspected Positive	-	5 units	Good	Non-Friable	Low	Low	Jun 2011	4	Confirm status. Maintain in good condition. Remove by a licensed asbestos contractor prior to refurbishment/ demolition works.	Labelled Nov 2010
Delivery Ward, Bathrooms and Store Rooms Wall linings Fibre cement sheeting	Previously sampled by NAA 66419-6-14	Negative	-	-	-	-	-	-	-	-	-	
Southern entrance, Beneath stairs Electrical Distribution Panel Electrical backing board *No sample taken due to live electricity	-	Suspected Positive	81	1 unit	Good	Non-Friable	Low	Low	Jun 2011	4	Confirm status. Maintain in good condition. Remove by a licensed asbestos contractor prior to refurbishment/ demolition works.	Labelled Nov 2010
<b>Interior – Level 1</b>												
Southern entrance door Vertical infill panel Fibre cement sheeting	Previously sampled by NAA 34641-01	Positive	82	~2m <sup>2</sup>	Good	Non-Friable	Low	Low	Jun 2011	4	Maintain in good condition. Remove by a licensed asbestos contractor prior to refurbishment/ demolition works.	Labelled Nov 2010
Counselling, Kitchen Flooring Vinyl floor tiles	Previously sampled by NAA 34641-02	Negative	-	-	-	-	-	-	-	-	-	

November 2010

Location Item Description Comments	Sample No.	Sample Status	Photo No.	Extent	Condition	Friability	Disturb. Potential	Risk Status	Re-inspect Date	Control Priority	Control Recommendation	Works Complete (Date/ Name)
Throughout Infill panels above doors Fibre cement sheeting	Previously sampled by NAA 34641-03	Positive	83	~25m <sup>2</sup>	Good	Non-Friable	Low	Low	Jun 2011	4	Maintain in good condition. Remove by a licensed asbestos contractor prior to refurbishment/ demolition works.	Labelled Nov 2010
Library Storeroom Flooring Grey vinyl sheeting	Previously sampled by NAA 34641-04	Negative	-	-	-	-	-	-	-	-	-	
Northern fire stairs, Infill panel beside door Fibre cement sheeting	Previously sampled by NAA Same as 34641-01	Assumed Positive	84	~2m <sup>2</sup>	Good	Non-Friable	Low	Low	Jun 2011	4	Maintain in good condition. Remove by a licensed asbestos contractor prior to refurbishment/ demolition works.	Labelled Nov 2010
Old Office Area, Infill panels above windows Fibre cement sheeting	Previously sampled by NAA Same as 34641-01	Assumed Positive	-	~3m <sup>2</sup>	Good	Non-Friable	Low	Low	Jun 2011	4	Maintain in good condition. Remove by a licensed asbestos contractor prior to refurbishment/ demolition works.	Labelled Nov 2010
Library, Entrance door Infill panels adjacent and above door Fibre cement sheeting	Previously sampled by NAA Same as 34641-01	Assumed Positive	85	~4m <sup>2</sup>	Good	Non-Friable	Low	Low	Jun 2011	4	Maintain in good condition. Remove by a licensed asbestos contractor prior to refurbishment/ demolition works.	Labelled Nov 2010
South western Male Toilets Cubicles Wall panels Fibre cement sheeting	Previously sampled by NAA 34641-05	Positive	-	~4m <sup>2</sup>	Good	Non-Friable	Low	Low	Jun 2011	4	Maintain in good condition. Remove by a licensed asbestos contractor prior to refurbishment/ demolition works.	Labelled Nov 2010

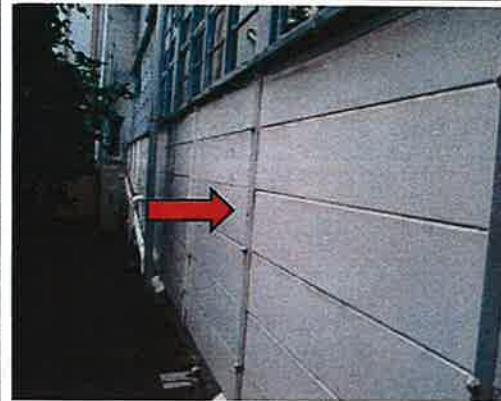
November 2010

Location Item Description Comments	Sample No.	Sample Status	Photo No.	Extent	Condition	Friability	Disturb. Potential	Risk Status	Re-inspect Date	Control Priority	Control Recommendation	Works Complete (Date/ Name)
USYD Northern Clinical School, Throughout Ceiling space Bituminous sarking	81691-48	Negative	-	-	-	-	-	-	-	-	-	-
USYD Kitchen Flooring Green vinyl floor tiles	81691-49A	Positive	86	~15m <sup>2</sup>	Good	Non-Friable	Low	Low	Jun 2011	4	Maintain in good condition. Remove by a licensed asbestos contractor prior to refurbishment/ demolition works.	Labelled Nov 2010
USYD Kitchen Flooring Amber adhesive attached to the underside of sample 81691-49A	81691-49B	Negative	-	-	-	-	-	-	-	-	-	-
Northern female toilets Wall lining Fibre cement sheeting	81691-50	Negative	-	-	-	-	-	-	-	-	-	-
Northern Female, Male and Disabled Toilets, Cubicles Wall panels Fibre cement sheeting	Previously sampled by NAA Same as 34641-05	Assumed Positive	87	~20m <sup>2</sup>	Good	Non-Friable	Low	Low	Jun 2011	4	Maintain in good condition. Remove by a licensed asbestos contractor prior to refurbishment/ demolition works.	Labelled Nov 2010
USYD, Northern doorway Wall lining Fibre cement sheeting	Previously sampled by NAA Same as 34641-01	Assumed Positive	88	~4m <sup>2</sup>	Good	Non-Friable	Low	Low	Jun 2011	4	Maintain in good condition. Remove by a licensed asbestos contractor prior to refurbishment/ demolition works.	Labelled Nov 2010





**Photo 55** Exterior, Godfrey Ward, Eaves – Asbestos containing fibre cement sheeting



**Photo 56** Exterior, Storey Ward, Northern wall cladding below windows – Asbestos containing fibre cement sheeting

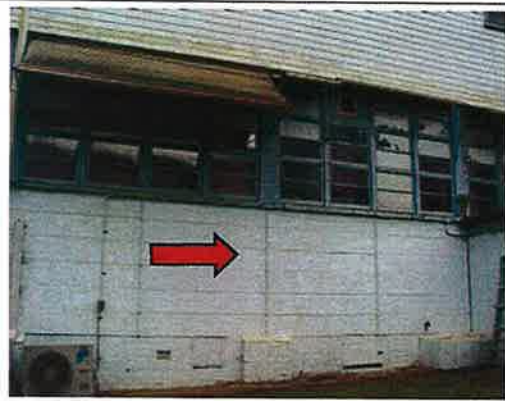


**Photo 57** Exterior, Storey Ward, Northern Annex, Fire exit, Infill panels above and below windows – Asbestos containing fibre cement sheeting



**Photo 58** Exterior, Eastern side, Nursing Unit entrance, Infill panels above and below windows – Asbestos containing fibre cement sheeting





**Photo 59** Exterior, Delivery Ward, Fire exit, Infill panels – Asbestos containing fibre cement sheeting



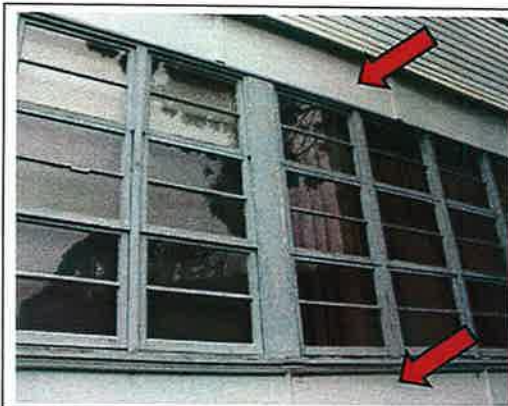
**Photo 60** Exterior, Surrounding Building, Eaves – Suspected asbestos containing fibre cement sheeting



**Photo 61** Exterior, Ground Level, Eastern side, Wall cladding – Asbestos containing fibre cement sheeting



**Photo 62** Exterior, Level 1, Southern side, Wall cladding – Asbestos containing fibre cement sheeting



**Photo 63** Exterior, Surrounding Building, Infill panels above and below windows – Asbestos containing fibre cement sheeting



**Photo 64** Exterior, Central Annex, Eaves – Asbestos containing fibre cement sheeting



**Photo 65** Exterior, South eastern A/C Plant Room, Eastern guttering – Asbestos containing moulded fibre cement



**Photo 66** Exterior, South eastern A/C Plant Room, Wall lining – Asbestos containing fibre cement sheeting



**Photo 67** Interior, South eastern A/C Plant Room, Upper Level  
Interior Northern wall, Electrical Distribution Panel – Asbestos containing electrical backing board



**Photo 68** Subfloor, Throughout, Pipe work – Asbestos containing pipe lagging



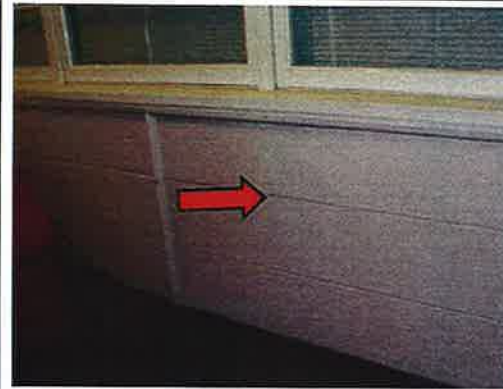
**Photo 69** Subfloor, Beneath Nursing Unit, Managers Office, Pipe work – Asbestos containing pipe lagging



**Photo 70** Interior, Ground Level, Throughout, Electrical Distribution Cupboards – Suspected asbestos containing electrical backing boards



**Photo 71** Interior, Ground Level, Storey Ward, Eastern Lounge/Sunroom, Infill panels above and below windows – Asbestos containing fibre cement sheeting



**Photo 72** Interior, Ground Level, Storey Ward, Eastern Lounge/Sunroom, Southern wall lining – Asbestos containing Fibre cement sheeting



**Photo 73** Interior, Ground Level, Storey Ward, Eastern stairs, Flooring – Asbestos containing cream vinyl floor tiles



**Photo 74** Malcolm Ward, Kitchen, Sink pad – Asbestos containing bituminous adhesive attached to the upper-side of the sink pad





**Photo 75** Interior, ground Level, Birthing Unit, Eastern side of corridor, Office adjacent Room 1, Ceiling space, Toilet cistern - Asbestos containing moulded fibre cement



**Photo 76** Interior, Ground Level, Godfrey Ward, Electrical Switch Room, Beneath northern stairs, Electrical Distribution Panels - Suspected asbestos containing electrical backing boards



**Photo 77** Interior, Ground Level, Storey Ward, Room 11, Infill panels below window - Asbestos containing fibre cement sheeting



**Photo 78** Interior, Ground Level, Storey Ward, Kitchen area adjacent door, Wall lining - Asbestos containing fibre cement sheeting

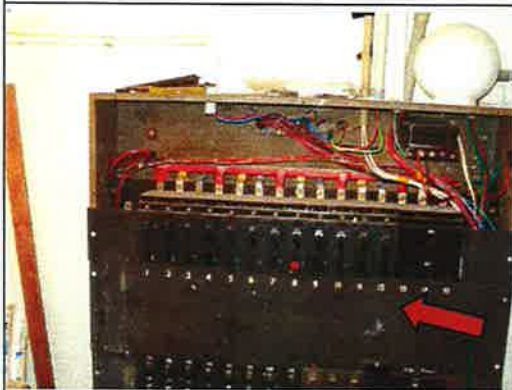




**Photo 79** Interior, Ground Level, Corridors, Throughout, Fire doors – Suspected asbestos containing core insulation



**Photo 80** Interior, Ground Level, Godfrey Ward, Adjacent entrance to Malcolm Ward, Flooring at fire stairs – Asbestos containing grey vinyl floor tiles



**Photo 81** Interior, Ground Level, Southern entrance, Beneath stairs, Electrical Distribution Panel – Suspected asbestos containing electrical backing board



**Photo 82** Interior, Level 1, Southern entrance door, Vertical infill panel - Asbestos containing fibre cement sheeting



**Photo 83** Interior, Level 1, Throughout, Infill panels above doors – Asbestos containing fibre cement sheeting



**Photo 84** Interior, Level 1, Northern fire stairs, Infill panel beside door – Asbestos containing fibre cement sheeting



**Photo 85** Interior, Level 1, Library, Entrance door, Infill panels adjacent and above door – Asbestos containing fibre cement sheeting



**Photo 86** Interior, Level 1, USYD Kitchen Flooring – Asbestos containing green vinyl floor tiles



**Photo 87** Interior, Level 1, Toilet cubicles, Wall panels – Asbestos containing fibre cement sheeting



**Photo 88** Interior, Level 1, USYD, Northern doorway, Wall lining – Asbestos containing fibre cement sheeting