

# BUNGARRIBEE INDUSTRIAL LOT 5B

## PROPOSED CIVIL WORKS - BULK EARTHWORKS PACKAGE

### DRAWING LIST

C200	COVER SHEET, NOTES, LEGENDS AND LOCALITY PLAN
C202	GENERAL ARRANGEMENT PLAN
C205	BULK EARTHWORKS PLAN SHEET 1
C206	BULK EARTHWORKS PLAN SHEET 2
C207	BULK EARTHWORKS PLAN SHEET 3
C208	BULK EARTHWORKS PLAN SHEET 4
C210	SEDIMENTATION AND EROSION CONTROL PLAN
C211	SEDIMENTATION AND EROSION CONTROL DETAILS

### BULK EARTHWORKS NOTES

- ORIGIN OF LEVELS: REFER SURVEY NOTES
- STRIP ALL TOPSOIL/ORGANIC MATERIAL FROM CONSTRUCTION AREA AND REMOVE FROM SITE OR STOCK PILE AS DIRECTED BY SUPERINTENDENT.
- EXCAVATED MATERIAL TO BE USED AS STRUCTURAL FILL PROVIDED THE PLACEMENT MOISTURE CONTENT OF THE MATERIAL IS +/- 2% OF THE OPTIMUM MOISTURE CONTENT.
- COMPACT FILL AREAS AND SUBGRADE TO NOT LESS THAN:

LOCATION	STANDARD DRY DENSITY (AS 1289 E 5.1.1)
UNDER BUILDING SLABS	98%
ON GROUND	98%
UNDER ROADS AND CARPARKS	98%
LANDSCAPED AREAS UNLESS NOTED OTHERWISE	98%
- FOR NON COHESIVE MATERIAL, COMPACT TO 75% DENSITY INDEX.
- BEFORE PLACING FILL, PROOF ROLL EXPOSED SUBGRADE WITH AN 8 TONNE (MIN) DEADWEIGHT SMOOTH DRUM VIBRATORY ROLLER TO DETECT THEN REMOVE SOFT SPOTS (AREAS WITH MORE THAN 2mm MOVEMENT UNDER ROLLER).
- FREQUENCY OF COMPACTION TESTING SHALL BE NOT LESS THAN :-
  - 1 TEST PER 200m<sup>2</sup> OF FILL PLACED PER 300 LAYER OF FILL.
  - 3 TESTS PER VISIT
  - 1 TEST PER 1000m<sup>2</sup> OF EXPOSED SUBGRADETESTING SHALL BE "LEVEL 1" TESTING IN ACCORDANCE WITH AS 3798 (1996).
- FILLING TO BE PLACED AND COMPACTED IN MAXIMUM 150mm LAYERS
- NO FILLING SHALL TAKE PLACE TO EXPOSE SUBGRADE UNTIL THE AREA HAS BEEN PROOF ROLLED IN THE PRESENCE OF AT & L AND APPROVAL GIVEN IN WRITING THAT FILLING CAN PROCEED.

### EROSION AND SEDIMENT CONTROL

#### NOTES

##### GENERAL INSTRUCTIONS

- THE SITE SUPERINTENDENT/ENGINEER WILL ENSURE THAT ALL SOIL AND WATER MANAGEMENT WORKS ARE LOCATED AS DOCUMENTED.
- ALL WORK SHALL BE GENERALLY CARRIED OUT IN ACCORDANCE WITH
  - LOCAL AUTHORITY REQUIREMENTS
  - EPA REQUIREMENTS
  - NSW DEPARTMENT OF HOUSING MANUAL "MANAGING URBAN STORMWATER, SOILS AND CONSTRUCTION", 4th EDITION, MARCH 2004.
- MAINTAIN THE EROSION CONTROL DEVICES TO THE SATISFACTION OF THE SUPERINTENDENT AND THE LOCAL AUTHORITY.
- WHEN STORMWATER PITS ARE CONSTRUCTED, PREVENT SITE RUNOFF ENTERING UNLESS SEDIMENT FENCES ARE ERECTED AROUND PITS.
- CONTRACTOR IS TO ENSURE ALL EROSION & SEDIMENT CONTROL DEVICES ARE MAINTAINED IN GOOD WORKING ORDER AND OPERATE EFFECTIVELY. REPAIRS AND OR MAINTENANCE SHALL BE UNDERTAKEN AS REQUIRED, PARTICULARLY FOLLOWING STORM EVENTS.

##### LAND DISTURBANCE

- WHERE PRACTICAL, THE SOIL EROSION HAZARD ON THE SITE WILL BE KEPT AS LOW AS POSSIBLE. TO THIS END, WORKS SHOULD BE UNDERTAKEN IN THE FOLLOWING SEQUENCE:
  - INSTALL A BARRIER FENCE ALONG THE BOUNDARIES AS SHOWN ON PLAN.
  - INSTALL A SEDIMENT FENCE ALONG THE BOUNDARIES AS SHOWN ON PLAN.
- CONSTRUCT STABILISED CONSTRUCTION ENTRANCE TO LOCATION AS DETERMINED BY SUPERINTENDENT/ENGINEER.
- INSTALL SEDIMENT TRAPS AS SHOWN ON PLAN.
- INSTALL SEDIMENT BASIN AS SHOWN ON PLAN

- UNDERTAKE SITE DEVELOPMENT WORKS IN ACCORDANCE WITH THE ENGINEERING PLANS. WHERE POSSIBLE, PHASE DEVELOPMENT SO THAT LAND DISTURBANCE IS CONFINED TO AREAS OF WORKABLE SIZE.

##### EROSION CONTROL

- DURING WINDY WEATHER, LARGE, UNPROTECTED AREAS WILL BE KEPT MOIST (NOT WET) BY SPRINKLING WITH WATER TO KEEP DUST UNDER CONTROL.
- FINAL SITE LANDSCAPING WILL BE UNDERTAKEN AS SOON AS POSSIBLE AND WITHIN 20 WORKING DAYS FROM COMPLETION OF CONSTRUCTION ACTIVITIES.
- STOCKPILES WILL NOT BE LOCATED WITHIN 2 METRES OF HAZARD AREAS, INCLUDING LIKELY AREAS OF CONCENTRATED OR HIGH VELOCITY FLOWS SUCH AS WATERWAYS. WHERE THEY ARE BETWEEN 2 AND 5 METRES FROM SUCH AREAS, SPECIAL SEDIMENT CONTROL MEASURES SHOULD BE TAKEN TO MINIMISE POSSIBLE POLLUTION TO DOWNSLOPE WATERS, E.G. THROUGH INSTALLATION OF SEDIMENT FENCING.
- ANY SAND USED IN THE CONCRETE CURING PROCESS (SPREAD OVER THE SURFACE) WILL BE REMOVED AS SOON AS POSSIBLE AND WITHIN 10 WORKING DAYS FROM PLACEMENT.
- WATER WILL BE PREVENTED FROM ENTERING THE PERMANENT DRAINAGE SYSTEM UNLESS IT IS RELATIVELY SEDIMENT FREE, I.E. THE CATCHMENT AREA HAS BEEN PERMANENTLY LANDSCAPED AND/OR ANY LIKELY SEDIMENT HAS BEEN FILTERED THROUGH AN APPROVED STRUCTURE.
- TEMPORARY SOIL AND WATER MANAGEMENT STRUCTURES WILL BE REMOVED ONLY AFTER THE LANDS THEY ARE PROTECTING ARE REHABILITATED.

##### OTHER MATTERS

- ACCEPTABLE RECEPTORS WILL BE PROVIDED FOR CONCRETE AND MORTAR SLURRIES, PAINTS, ACID WASHINGS, LIGHT-WEIGHT WASTE MATERIALS AND LITTER.
- ANY EXISTING TREES WHICH FORM PART OF THE FINAL LANDSCAPING PLAN WILL BE PROTECTED FROM CONSTRUCTION ACTIVITIES BY:
  - PROTECTING THEM WITH BARRIER FENCING OR SIMILAR MATERIALS INSTALLED OUTSIDE THE DRIP LINE
  - ENSURING THAT NOTHING IS NAILED TO THEM
  - PROHIBITING PAVING, GRADING, SEDIMENT WASH OR PLACING OF STOCKPILES WITHIN THE DRIP LINE EXCEPT UNDER THE FOLLOWING CONDITIONS.
    - ENCROACHMENT ONLY OCCURS ON ONE SIDE AND NO CLOSER TO THE TRUNK THAN EITHER 15 METRES OR HALF THE DISTANCE BETWEEN THE OUTER EDGE OF THE DRIP LINE AND THE TRUNK, WHICH EVER IS THE GREATER
    - A DRAINAGE SYSTEM THAT ALLOWS AIR AND WATER TO CIRCULATE THROUGH THE ROOT ZONE (E.G. A GRAVEL BED) IS PLACED UNDER ALL FILL LAYERS OF MORE THAN 300 MILLIMETRES DEPTH
    - CARE IS TAKEN NOT TO CUT ROOTS UNNECESSARILY NOR TO COMPACT THE SOIL AROUND THEM.

### SITEWORKS LEGEND

---	BOUNDARY
- . - . - . -	EXISTING BOUNDARY TO BE REMOVED
● BE56.00	BULK EARTHWORKS LEVEL
54.0	EXISTING CONTOUR
--- 54.0 ---	PROPOSED BULK EARTHWORKS CONTOUR

BENCH MARK	▲
TELSTRA PIT	TEL
TELSTRA PILLAR	TP
ELECTRIC LIGHT POLE	ELP
POWER POLE	PP
SERVICE PIT (METAL LID)	MPIT
STREET SIGN	SS
GRATED INLET PIT	GIP
KERB INLET PIT	KIP
DRAINAGE PIT	DP
STOP VALVE	SV
HYDRANT	HYD
GAS VALVE	GAS

GAS	G
TELSTRA	T
OPTIC FIBRE	OP
ELECTRICITY (OVERHEAD)	P
ELECTRICITY (U'GROUND)	E
WATER	W
STORMWATER	SW
SEWER	S
UNKNOWN	U



LOCALITY PLAN  
N.T.S.



CONTRACTOR SHALL CALL;  
DIAL BEFORE  
YOU DIG 1100  
PRIOR TO COMMENCEMENT OF WORK  
TO OBTAIN ALL CURRENT SERVICE  
AUTHORITY PLANS

C	RE-ISSUED FOR S75W APPROVAL	06-05-13
B	RE-ISSUED FOR S75W APPROVAL	22-04-13
A	ISSUED FOR S75W APPROVAL	12-04-13

Issue	Description	Date
-------	-------------	------

THIS DRAWING CANNOT BE COPIED OR REPRODUCED IN ANY FORM OR USED FOR ANY OTHER PURPOSE OTHER THAN THAT ORIGINALLY INTENDED WITH THE WRITTEN PERMISSION OF AT&L

Status	FOR APPROVAL NOT TO BE USED FOR CONSTRUCTION	A1
--------	---	----

Scales	NTS	Drawn GB	
		Designed GB	
Height Datum	AHD	Checked AMc	
Grid		Approved	

File: C200-COVER-SHEET-&-LOCALITY-PLAN.dwg  
Client



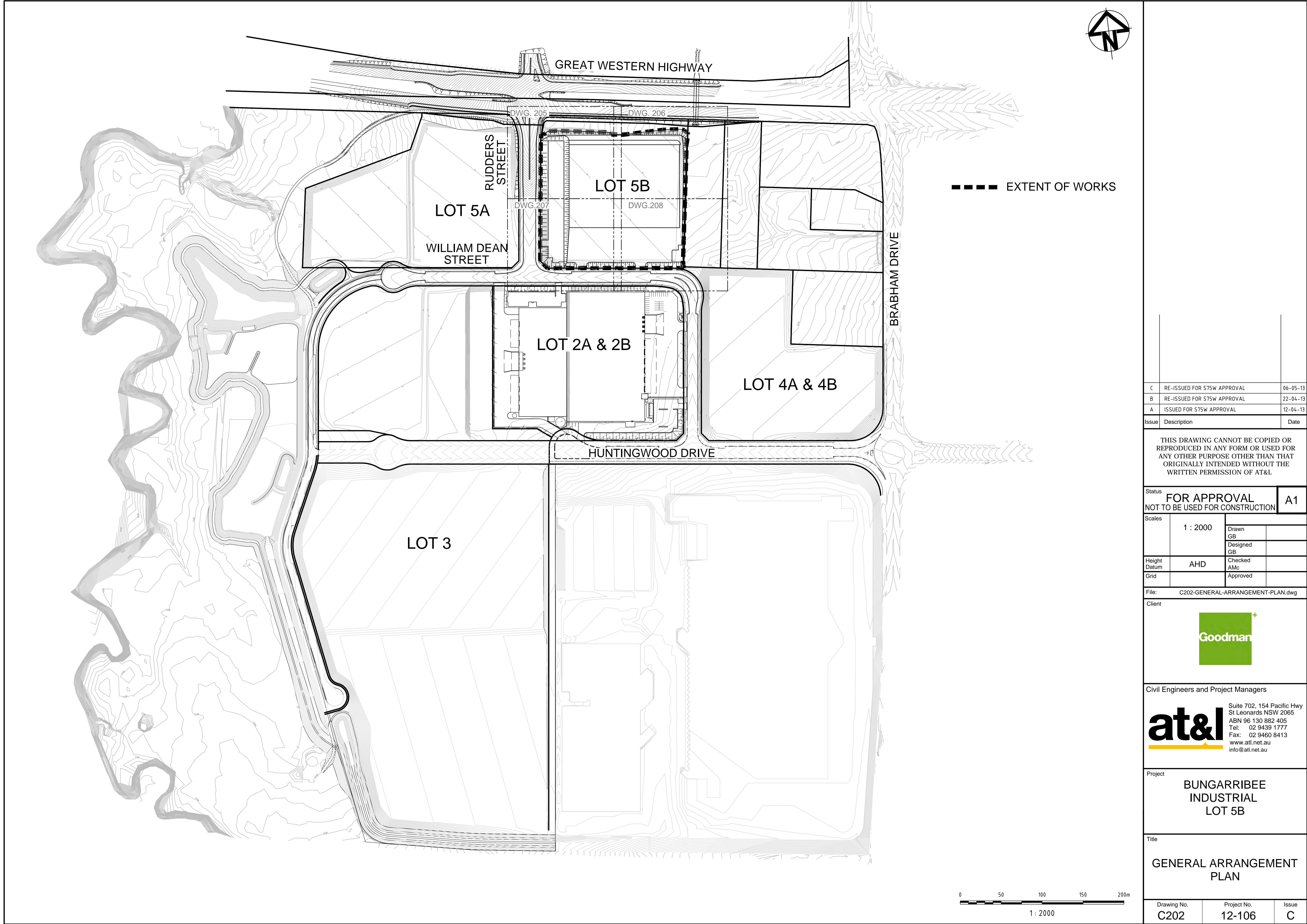
Civil Engineers and Project Managers

**at&l**  
Suite 702, 154 Pacific Hwy  
St Leonards NSW 2065  
ABN 96 130 892 405  
Tel: 02 9439 1777  
Fax: 02 9460 8413  
www.atl.net.au  
info@atl.net.au

Project  
**BUNGARRIBEE  
INDUSTRIAL  
LOT 5B**

Title  
**COVER SHEET, NOTES,  
LEGENDS AND LOCALITY  
PLAN**

Drawing No. <b>C200</b>	Project No. <b>12-106</b>	Issue <b>C</b>
----------------------------	------------------------------	-------------------



C	RE-ISSUED FOR S75W APPROVAL	06-05-13
B	RE-ISSUED FOR S75W APPROVAL	22-04-13
A	ISSUED FOR S75W APPROVAL	12-04-13

Issue	Description	Date
-------	-------------	------

THIS DRAWING CANNOT BE COPIED OR REPRODUCED IN ANY FORM OR USED FOR ANY OTHER PURPOSE OTHER THAN THAT ORIGINALLY INTENDED WITHOUT THE WRITTEN PERMISSION OF AT&L

Status	FOR APPROVAL NOT TO BE USED FOR CONSTRUCTION	A1
--------	---	----

Scales	1 : 2000	Drawn GB	
		Designed GB	
Height Datum	AHD	Checked AMc	
Grid		Approved	

File: C202-GENERAL-ARRANGEMENT-PLAN.dwg

Client



Civil Engineers and Project Managers



Suite 702, 154 Pacific Hwy  
St Leonards NSW 2065  
ABN 96 130 882 405  
Tel: 02 9439 1777  
Fax: 02 9460 8413  
www.atl.net.au  
info@atl.net.au

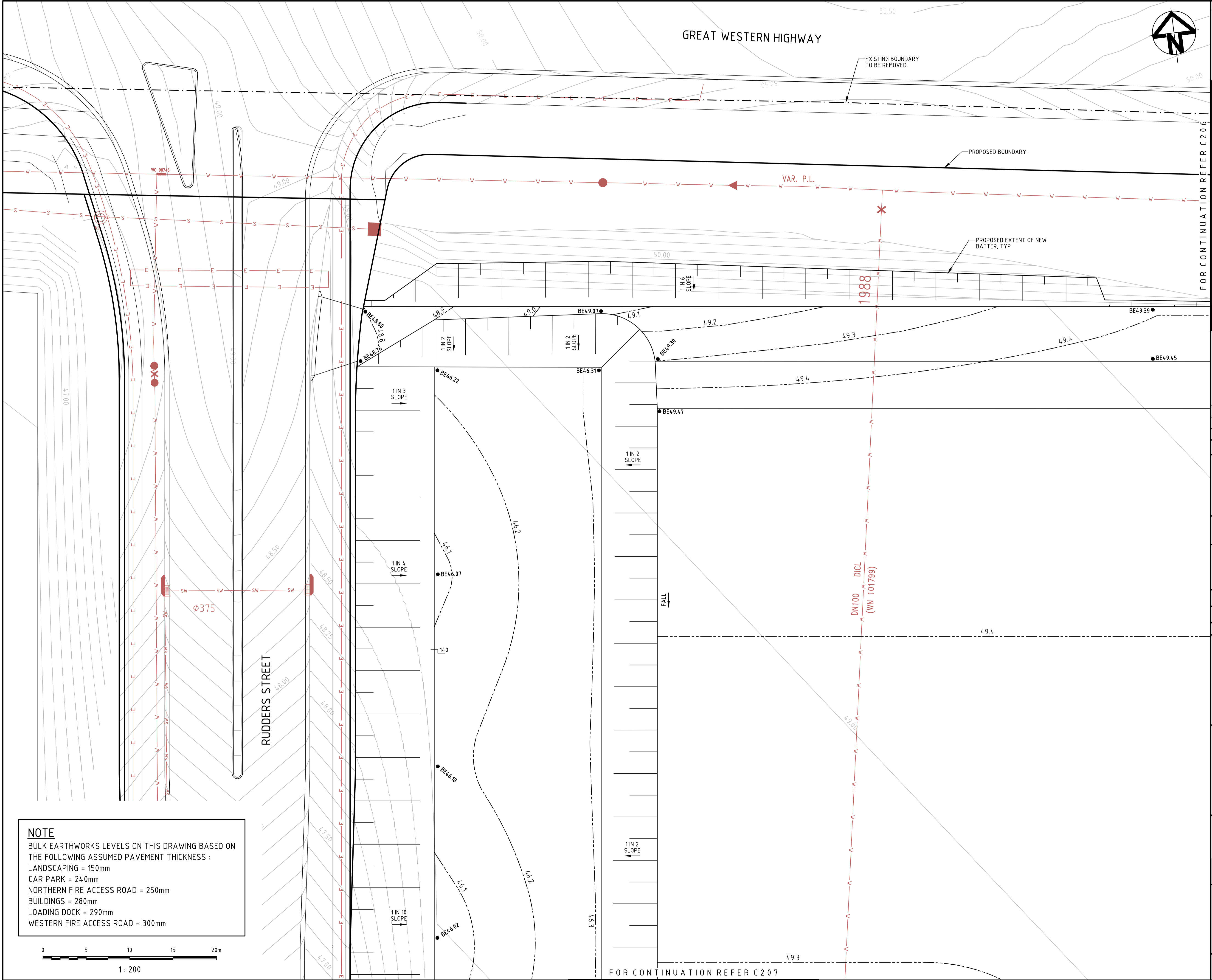
Project

BUNGARRIBEE  
INDUSTRIAL  
LOT 5B

Title

GENERAL ARRANGEMENT  
PLAN

Drawing No. C202	Project No. 12-106	Issue C
---------------------	-----------------------	------------



FOR CONTINUATION REFER C206

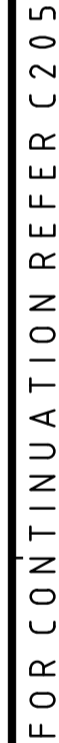
C	RE-ISSUED FOR S75W APPROVAL	06-05-13
B	RE-ISSUED FOR S75W APPROVAL	22-04-13
A	ISSUED FOR S75W APPROVAL	12-04-13

Issue	Description	Date

THIS DRAWING CANNOT BE COPIED OR REPRODUCED IN ANY FORM OR USED FOR ANY OTHER PURPOSE OTHER THAN THAT ORIGINALLY INTENDED WITHOUT THE WRITTEN PERMISSION OF AT&L

Status	<b>FOR APPROVAL</b>		<b>A1</b>
NOT TO BE USED FOR CONSTRUCTION			
Scales	1 : 200	Drawn GB	
		Designed GB	
Height Datum	AHD	Checked AMc	
Grid		Approved	
File:	C205-BULK-EARTHWORKS-PLAN-SHT-1.dwg		
Client			
Civil Engineers and Project Managers			
		Suite 702, 154 Pacific Hwy St Leonards NSW 2065 ABN 96 130 882 405 Tel: 02 9439 1777 Fax: 02 9460 8413 www.atl.net.au info@atl.net.au	
Project	<b>BUNGARRIBEE INDUSTRIAL LOT 5B</b>		
Title	<b>BULK EARTHWORKS PLAN SHEET 1</b>		
Drawing No.	Project No.	Issue	
<b>C205</b>	<b>12-106</b>	<b>C</b>	

FOR CONTINUATION REFER C207



THIS DRAWING CANNOT BE COPIED OR  
REPRODUCED IN ANY FORM OR USED FOR  
ANY OTHER PURPOSE OTHER THAN THAT  
ORIGINALLY INTENDED WITHOUT THE  
WRITTEN PERMISSION OF AT&L

FOR APPROVAL  
NOT TO BE USED FOR CONSTRUCTION

Client

Goodman

**at&h**

Suite 702, 154 Pacific Hwy  
St Leonards NSW 2065  
ABN 96 130 882 405  
Tel: 02 9439 1777  
Fax: 02 9460 8413  
[www.atl.net.au](http://www.atl.net.au)  
[info@atl.net.au](mailto:info@atl.net.au)

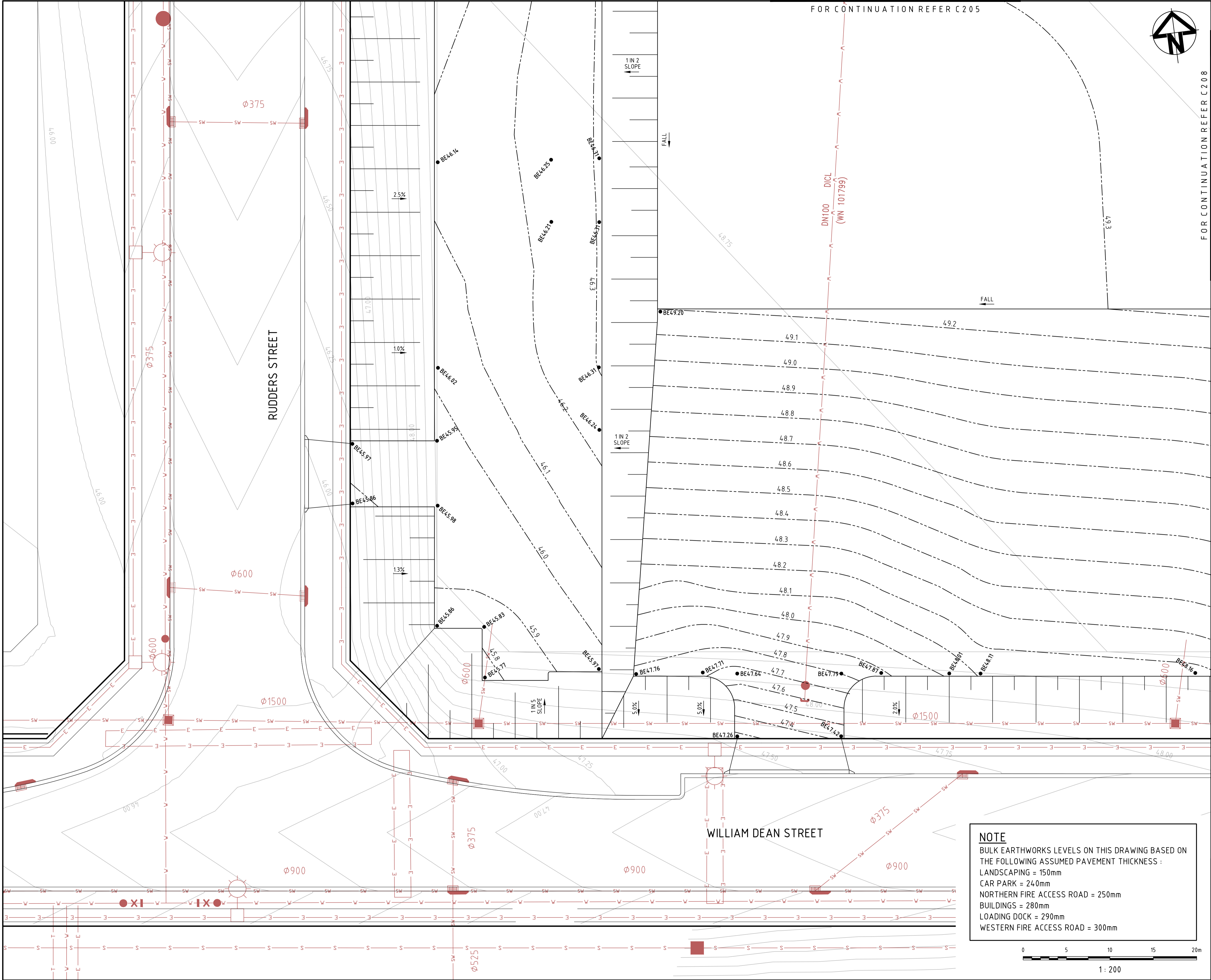
Project

**BUNGARRIBEE  
INDUSTRIAL  
LOT 5B**

Title

BULK EARTHWORKS  
PLAN  
SHEET 2

Drawing No.	Project No.	Issue
C206	12-106	C



FOR CONTINUATION REFER C205

FOR CONTINUATION REFER C208

C	RE-ISSUED FOR S75W APPROVAL	06-05-13
B	RE-ISSUED FOR S75W APPROVAL	22-04-13
A	ISSUED FOR S75W APPROVAL	12-04-13

Issue	Description	Date
C	RE-ISSUED FOR S75W APPROVAL	06-05-13
B	RE-ISSUED FOR S75W APPROVAL	22-04-13
A	ISSUED FOR S75W APPROVAL	12-04-13

THIS DRAWING CANNOT BE COPIED OR REPRODUCED IN ANY FORM OR USED FOR ANY OTHER PURPOSE OTHER THAN THAT ORIGINALLY INTENDED WITHOUT THE WRITTEN PERMISSION OF AT&L

Status	FOR APPROVAL		A1
NOT TO BE USED FOR CONSTRUCTION			
Scales	1 : 200	Drawn GB	
		Designed GB	
Height Datum	AHD	Checked AMc	
Grid		Approved	

File: C207-BULK-EARTHWORKS-PLAN-SHT-3.dwg

Client

Goodman

Civil Engineers and Project Managers

at&l

Suite 702, 154 Pacific Hwy  
St Leonards NSW 2065  
ABN 96 130 882 405  
Tel: 02 9439 1777  
Fax: 02 9460 8413  
www.atl.net.au  
info@atl.net.au

Project

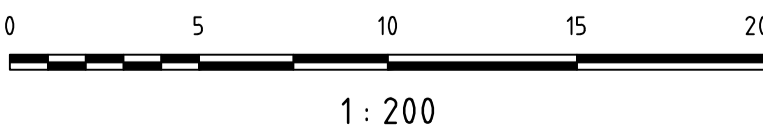
BUNGARRIBEE INDUSTRIAL LOT 5B

Title

BULK EARTHWORKS PLAN SHEET 3

Drawing No.	Project No.	Issue
C207	12-106	C

**NOTE**  
BULK EARTHWORKS LEVELS ON THIS DRAWING BASED ON THE FOLLOWING ASSUMED PAVEMENT THICKNESS :  
LANDSCAPING = 150mm  
CAR PARK = 240mm  
NORTHERN FIRE ACCESS ROAD = 250mm  
BUILDINGS = 280mm  
LOADING DOCK = 290mm  
WESTERN FIRE ACCESS ROAD = 300mm





THIS DRAWING CANNOT BE COPIED OR  
REPRODUCED IN ANY FORM OR USED FOR  
ANY OTHER PURPOSE OTHER THAN THAT  
ORIGINALLY INTENDED WITHOUT THE  
WRITTEN PERMISSION OF AT&L

Scales	1 : 200		
		Drawn GB	
		Designed GB	
Height Datum	AHD	Checked AMc	
Grid		Approved	

Client



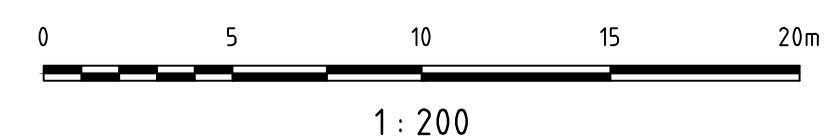
**at&I**

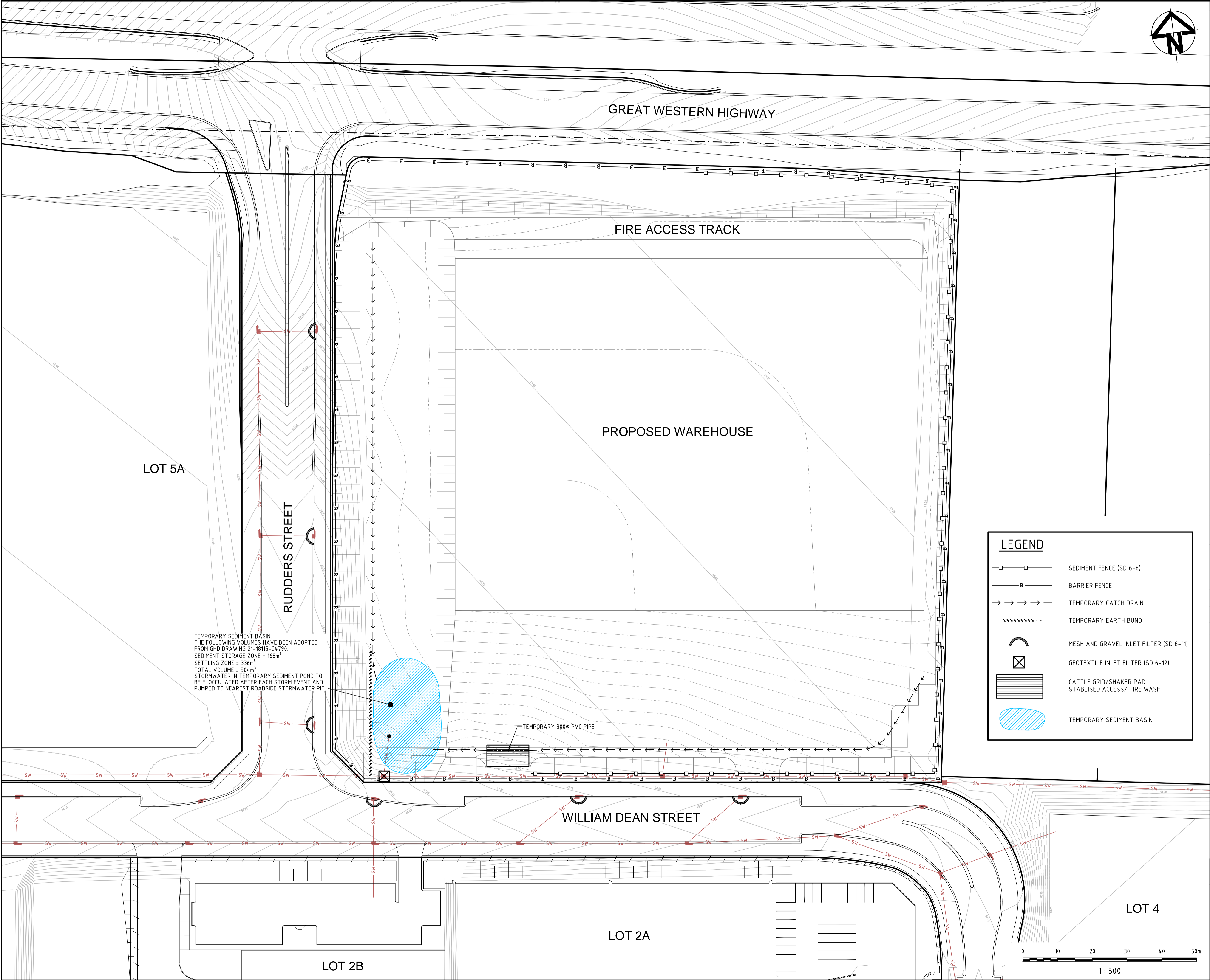
Suite 702, 154 Pacific Hwy  
St Leonards NSW 2065  
ABN 96 130 882 405  
Tel: 02 9439 1777  
Fax: 02 9460 8413  
[www.atl.net.au](http://www.atl.net.au)  
[info@atl.net.au](mailto:info@atl.net.au)

\_\_\_\_\_

Drawing No. <b>C208</b>	Project No. <b>12-106</b>	Issue <b>C</b>
----------------------------	------------------------------	-------------------

**NOTE**  
BULK EARTHWORKS LEVELS ON THIS DRAWING BASED ON  
THE FOLLOWING ASSUMED PAVEMENT THICKNESS :  
LANDSCAPING = 150mm  
CAR PARK = 240mm  
NORTHERN FIRE ACCESS ROAD = 250mm  
BUILDINGS = 280mm  
LOADING DOCK = 290mm  
WESTERN FIRE ACCESS ROAD = 300mm





TEMPORARY SEDIMENT BASIN  
THE FOLLOWING VOLUMES HAVE BEEN ADOPTED  
FROM GHD DRAWING Z1-18115-C4790.  
SEDIMENT STORAGE ZONE = 168m³  
SETTLING ZONE = 336m³  
TOTAL VOLUME = 504m³  
STORMWATER IN TEMPORARY SEDIMENT POND TO  
BE FLOCCULATED AFTER EACH STORM EVENT AND  
PUMPED TO NEAREST ROADSIDE STORMWATER PIT

LEGEND

SEDIMENT FENCE (SD 6-8)

B

BARRIER FENCE

→ → → →

TEMPORARY CATCH DRAIN

TEMPORARY EARTH BUND

MESH AND GRAVEL INLET FILTER (SD 6-11)

GEOTEXTILE INLET FILTER (SD 6-12)

CATTLE GRID/SHAKER PAD  
STABILISED ACCESS/ TIRE WASH

TEMPORARY SEDIMENT BASIN

C	RE-ISSUED FOR S75W APPROVAL	06-05-13
B	RE-ISSUED FOR S75W APPROVAL	22-04-13
A	ISSUED FOR S75W APPROVAL	12-04-13
Issue	Description	Date

THIS DRAWING CANNOT BE COPIED OR  
REPRODUCED IN ANY FORM OR USED FOR  
ANY OTHER PURPOSE OTHER THAN THAT  
ORIGINALLY INTENDED WITHOUT THE  
WRITTEN PERMISSION OF AT&L

Status	FOR APPROVAL	
	NOT TO BE USED FOR CONSTRUCTION	
Scales	1 : 500	Drawn GB
		Designed GB
Height Datum	AHD	Checked AMc
Grid		Approved

File: C210-SEDIMENT-AND-EROSION-CONTROL-PLAN.dwg

Client

Civil Engineers and Project Managers

Suite 702, 154 Pacific Hwy  
St Leonards NSW 2065  
ABN 96 130 882 405  
Tel: 02 9439 1777  
Fax: 02 9460 8413  
www.atl.net.au  
info@atl.net.au

Project

BUNGARRIBEE  
INDUSTRIAL  
LOT 5B

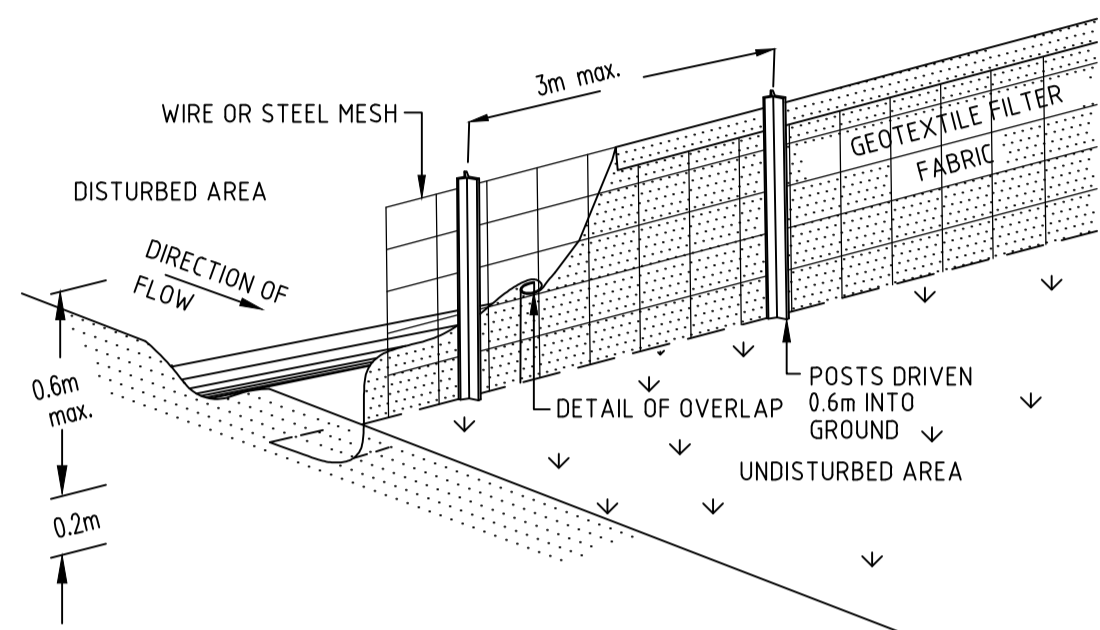
Title

SEDIMENTATION AND  
EROSION CONTROL  
PLAN

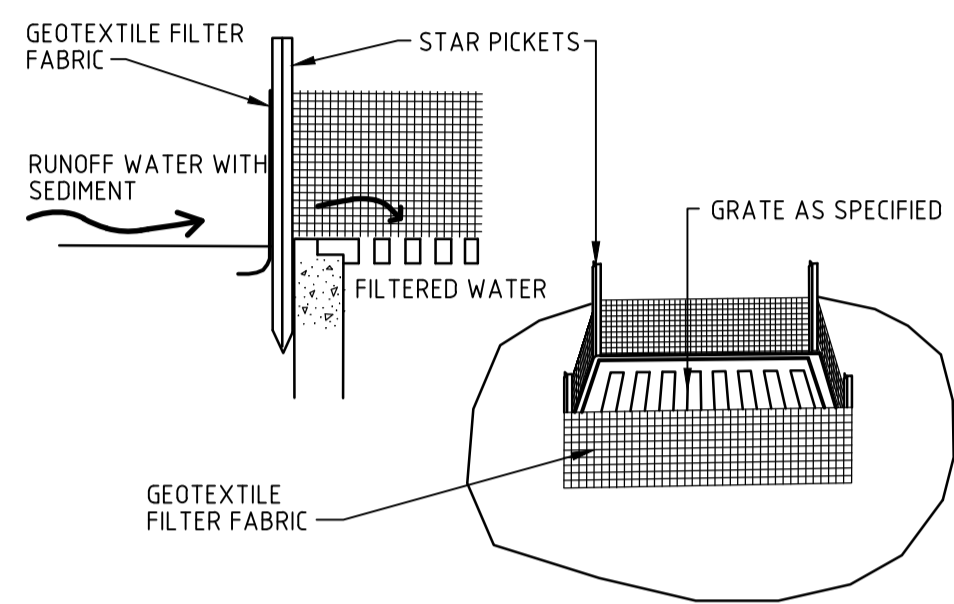
Drawing No.  
C210

Project No.  
12-106

Issue  
C

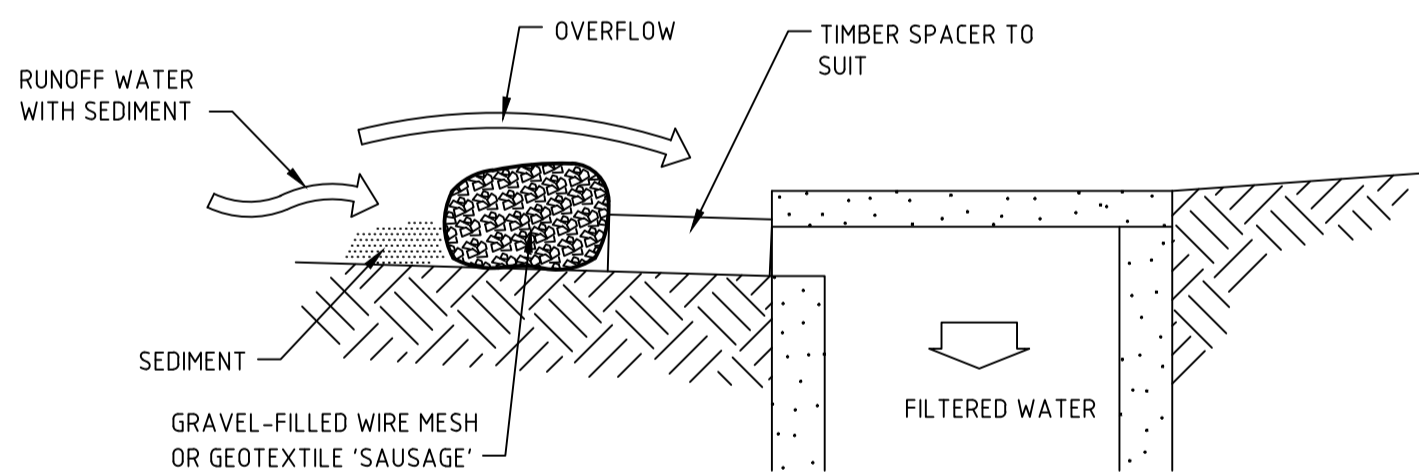
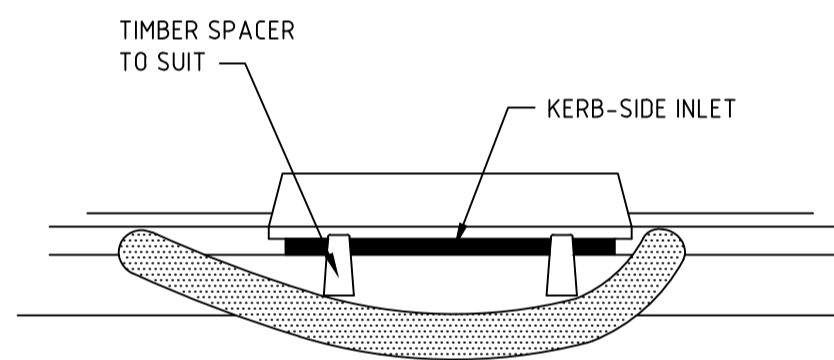


SEDIMENT FENCE



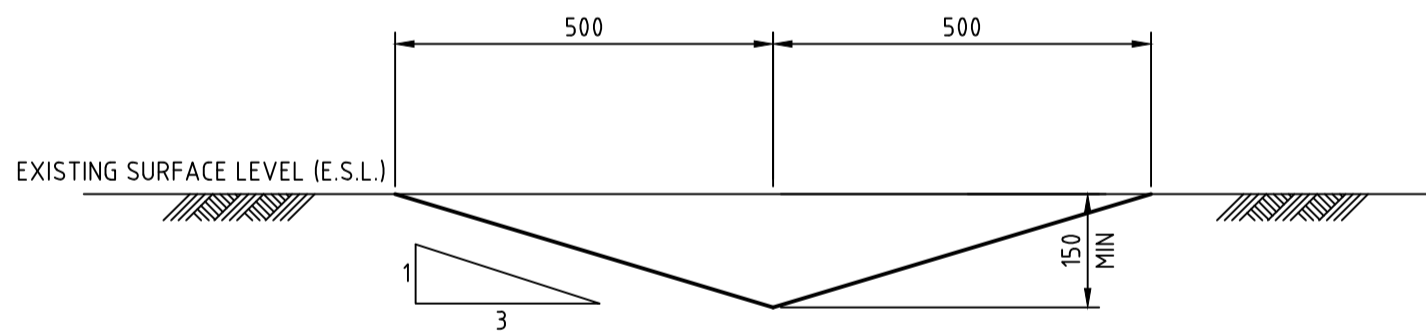
GEOTEXTILE INLET FILTER

NTS



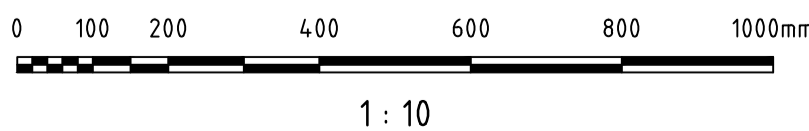
MESH AND GRAVEL INLET FILTER

NTS



TEMPORARY CATCH DRAIN

(MIN FALL 1%)  
SCALE 1:10



C	RE-ISSUED FOR S75W APPROVAL	06-05-13
B	RE-ISSUED FOR S75W APPROVAL	22-04-13
A	ISSUED FOR S75W APPROVAL	12-04-13

Issue	Description	Date
-------	-------------	------

THIS DRAWING CANNOT BE COPIED OR REPRODUCED IN ANY FORM OR USED FOR ANY OTHER PURPOSE OTHER THAN THAT ORIGINALLY INTENDED WITHOUT THE WRITTEN PERMISSION OF AT&L

Status	FOR APPROVAL NOT TO BE USED FOR CONSTRUCTION	A1
--------	---	----

Scales	AS SHOWN	Drawn GB	
		Designed GB	
Height Datum	AHD	Checked AMc	
Grid		Approved	

File: C211-SEDIMENT-AND-EROSION-CONTROL-DETAILS.dwg



Civil Engineers and Project Managers

**at&l** Suite 702, 154 Pacific Hwy  
St Leonards NSW 2065  
ABN 96 130 882 405  
Tel: 02 9439 1777  
Fax: 02 9460 8413  
www.atl.net.au  
info@atl.net.au

Project  
**BUNGARRIBEE  
INDUSTRIAL  
LOT 5B**

Title  
**SEDIMENTATION AND  
EROSION CONTROL  
DETAILS**

Drawing No. <b>C211</b>	Project No. <b>12-106</b>	Issue <b>C</b>
----------------------------	------------------------------	-------------------