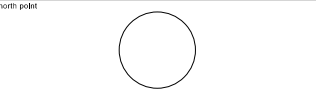
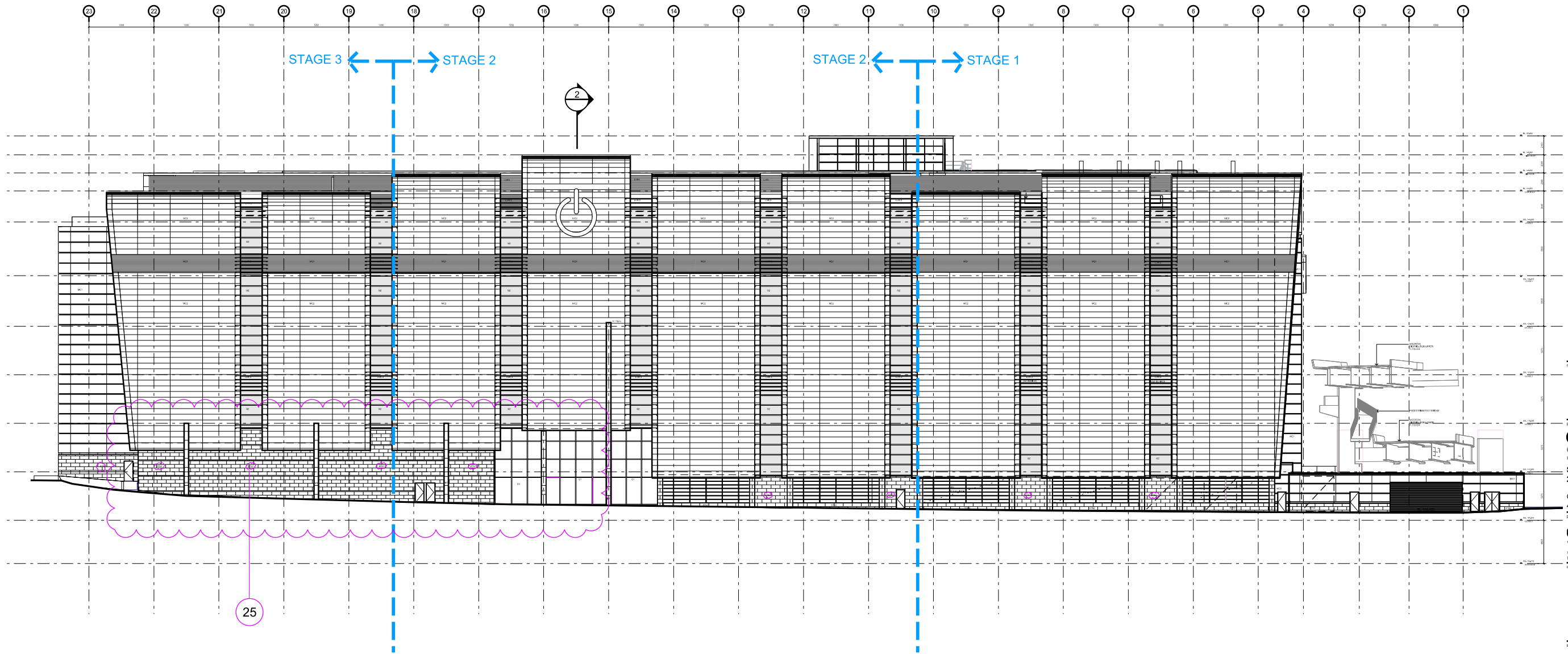


© copyright of dem (austr) Pty Limited sbs 92 085 456 844.
any unauthorised use or distribution of information depicted on this document without dem (austr) Pty Limited prior consent is prohibited.
any reports, drawings, advice or information included or referenced that is prepared and/or provided by any other party, including the client/principal, is the sole representation of the party who prepared the report/drawings, advice or information and does not constitute a representation by dem (austr) Pty Limited. dem (austr) Pty Limited expressly takes no responsibility for any documents, advice or other material prepared by any other party.
figured dimensions to be taken in preference to scaled dimensions. verify all dimensions on the job before preparing shop drawings or commencing work. dimensions shown are computer generated and the contractor is to apply standard building tolerances.
verified suitable for the use stipulated by the relevant revision/issue only if installed and checked by an authorised dem (austr) Pty Limited representative.

amendments				verified			
no.	date	amendment	by	chk'd	int	chk'd	
B05	05/06/15	SECTION 75W SUBMISSION	KK	KK	SJ	SJ	
	05/06/15	STONE CLADDING LABELS CORRECTED	KK	KK	SJ	SJ	



project client
GLOBAL SWITCH
Sydney East Campus
273 Pyrmont Street, Ultimo NSW 2007

Global Switch Property (Australia)
400 Harris Street Ultimo NSW 2007

project manager
area3
consulting | project management | design
suite 1203 23 Hunter Street, Sydney NSW 2000
t: 1300 786 500 w: area3consulting.com
design & build contractor



planning, urban design, architecture,
landscape architecture, interior design
dem

level 8, 15 Help Street Chatswood, NSW 2067
t: 02 9966 6000 f: 02 9966 6111
ec@dem.com.au
structural consultant

services consultant

drawing title
East Elevation

section 75W

original	scale	drawn	project no.
b1	1:200	KK/MN	4277-00

drawing no.	rev no.
ar-2501	B05

NOTE:
AN AMENDED FACADE PROPOSAL INCORPORATING ACTIVATION WILL BE THE SUBJECT OF A SEPARATE S75W APPLICATION

MATERIALS LEGEND:
FBLK FACE BLOCKWORK (CHARCOAL COLOUR)
CONC-2 CONCRETE IN PAINT FINISH
BLK-2 BLOCKWORK WITH TEXTURE PAINT FINISH
G1 GLAZING WALL SYSTEM
G2 GLAZED ALUMINUM CURTAIN WALL SYSTEM
LVR 1 75mm ONE STAGE ALUMINUM COMPOSITE: 'DARK GREY METALLIC'
LVR 2 HORIZONTAL BLADES 300x 60MM ALUMINUM COMPOSITE: SATIN STAINLESS STEEL
LVR 3 HORIZONTAL BLADES 400x 75MM ALUMINUM COMPOSITE: SATIN STAINLESS STEEL
M1 COLUMN CLADDING ALUMINUM COMPOSITE: SATIN STAINLESS STEEL
MC1 ALUMINUM COMPOSITE CLADDING: 'DARK GREY METALLIC'
MC2 ALUMINUM COMPOSITE CLADDING: 'BRUSHED ALUMINUM'
MC3 SOLID ALUMINUM FOLDED SHEET CLADDING: 'SILVER METALLIC'
MC3P SOLID ALUMINUM FOLDED CLADDING: 'SILVER METALLIC'-PERFORATED
MC4 ALUMINUM COMPOSITE CLADDING: 'SILVER METALLIC'
MG1 PERFORATED FOLDED ALUMINUM PANELS: 'BRUSHED ALUMINUM'
MR COLORBOND ULTRA STEEL: KLIPLOK 700 ROOFING
STN1 SANDSTONE CLADDING
STN2 HONED BLACK GRANITE CLADDING