



dem

### **9.3 Landscape Plans**

<b>from</b>	Jenny Lambert	<b>division</b>	Landscan
<b>project</b>	Global Sydney Switch 2	<b>project no</b>	4019-01

[illegible][illegible]

A = Approval C = Comment Ck = Cost Check Co = Coord Cn = Construction I = Info P = Prelim T = Tender/Quote R = Records DA = Development Application CC = Const Cert

[illegible]

E = Electronic P = Prints S = Specifications T = Tracings

[illegible]

D = We Dropped Off E = Email F = Fax Fp = FTP M = Mail/Express Post OC = Our Courier P = You Picked Up YC = Your Courier

[illegible][illegible]

Any reports, drawings, advice or information included or referenced that is prepared and/or provided by any other party, including the Client/Principle, is the sole representation of the party who prepared the report, drawings, advice or information and does not constitute a representation by DEM (Aust) Pty Ltd. DEM (Aust) Pty Ltd expressly takes no responsibility for any documents, advice or other material prepared by any other party.

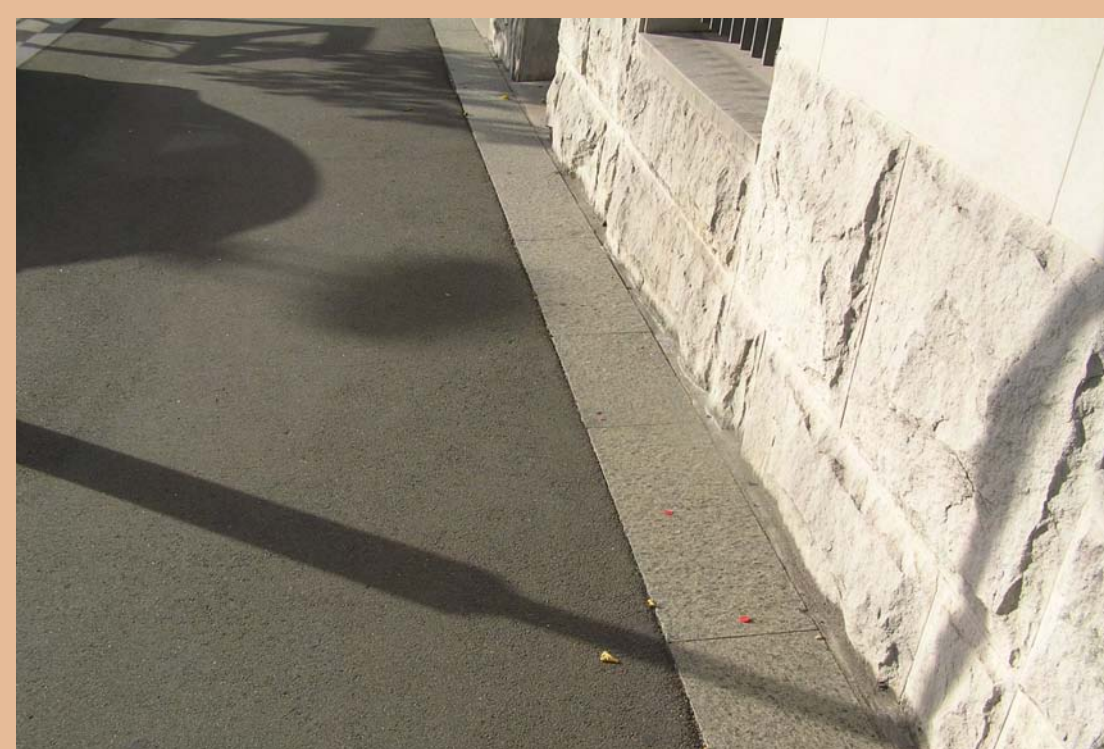
P:\4019-01-GSSvd2\02StandardsManagement\02-07Transmittals\4019-01GSSvd2-Transmittal-current.doc





dem

# paving



Asphalt with granite banding to building edge



Pram ramp in granite paving



Granite paving



Asphalt with granite banding to tree pits



Asphalt with granite banding to building edge + tactiles to driveway



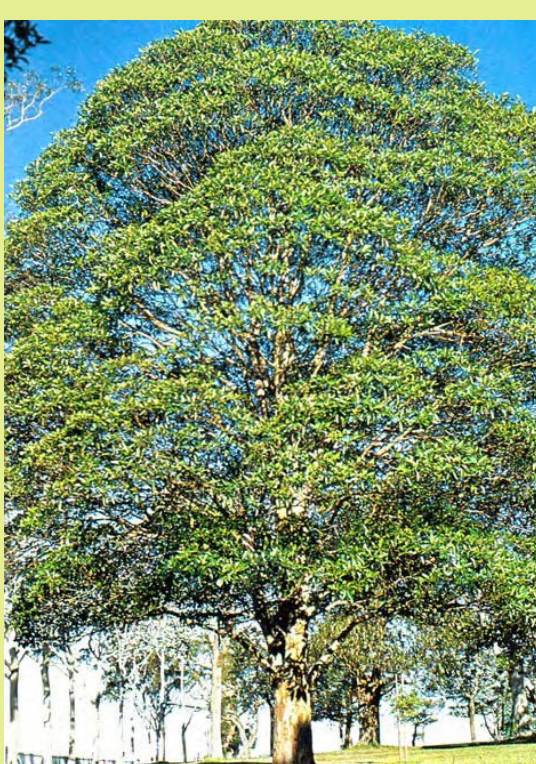
Asphalt with strips of granite paving



'Terrabond' porous paving to base of trees

# planting

## street trees



**Lophostemon confertus**  
Brushbox



**Ficus microcarpa var 'Hillii'**  
Hills Fig

## roof garden



**Isolepsis nodosa**  
Knobby Club Rush



**Festuca glauca**  
Blue Fescue



**Dianella 'Little Rev'**



**Dianella 'Little Jess'**



**Poa labillardieri**  
Large Tussock Grass



**Lomandra longifolia**  
'Tanika'



**Dianella**  
'Silver Streak'



**Dianella 'Breeze'**



**Pennisetum alopecuroides**  
Swamp Foxtail

# lighting



Kim 'Bounce' poletop light



Kim 'Bounce' poletop light

## Global Sydney Switch 2—Extension





Botanic Name	Common Name	Size	Planting rate
<strong>STREET TREES</strong>			
Lophostomen confertus	Brush Box	200L	As shown
Ficus microcarpa var 'Hillii'	Hills Fig	200L	As shown
<strong>ROOF GARDEN</strong>			
Isolepis nodosa	Knobbly Club Rush	Tube	8 per sqm
Festuca glauca	Blue Fescue	Tube	8 per sqm
Dianella 'Little Jess'	Little Jess	Tube	8 per sqm
Dianella 'Little Rev'	Little Rev	Tube	8 per sqm
Poa labillardieri	Large Tussock Grass	Tube	8 per sqm
Dianella 'Silver Streak'	Silver Streak	Tube	8 per sqm
Lomandra longifolia 'Tanika'	Tanika	Tube	8 per sqm
Dianella 'Breeze'	Breeze	Tube	8 per sqm
Pennisetum alopecuroides	Swamp foxtail	Tube	8 per sqm

## HARRIS STREET

### GENERAL NOTES

- DIMENSIONS ARE IN MILLIMETRES LEVELS SHOWN ARE IN METRES. DO NOT SCALE THIS DRAWING.
- FOR ARCHITECTURAL DETAILS REFER ARCHITECTS DRAWINGS.
- ALL SERVICES TO BE CHECKED AND VERIFIED ON SITE.
- SURVEY INFORMATION TAKEN FROM HARD & FORESTER SURVEY DATED 09.01.09

### LEGEND

- EXTENT OF WORKS
- SITE BOUNDARY ADJACENT LOT BOUNDARIES
- BUILDING/ OVERPASS OVER
- EXISTING TREES TO BE RETAINED
- EXISTING TREES TO BE REMOVED
- PROPOSED STREET TREES
- PROPOSED GRANITE FLAGGING WITH GRANITE BANDING
- PROPOSED ASPHALT WITH GRANITE BANDING
- PROPOSED STREET LIGHTS

### STREETSCAPE

THE STREETSCAPE IS ENHANCED THROUGH:  
- FOOTPATH TREATMENT IN ACCORDANCE WITH ULTIMO PYRMONT PUBLIC DOMAIN TECHNICAL MANUAL APRIL 1997.  
- PROVISION OF STREET TREES IN ACCORDANCE WITH CITY OF SYDNEY STREET TREE MASTERPLAN 2004

© copyright of dem (austr) Pty limited abn 92 085 486 844.  
any unauthorised use or distribution of information depicted on this document without dem (austr) Pty limited prior consent is prohibited.

any reports, drawings, advice or information included or referenced that is prepared and/or provided by any other party, including the client/principal, is the sole representation of the party who prepared the report/drawings, advice or information and does not constitute a representation by dem (austr) Pty limited. dem (austr) Pty limited expressly takes no responsibility for any documents, advice or other material prepared by any other party.

figured dimensions to be taken in preference to scaled dimensions. verify all dimensions on the job before preparing shop drawings or commencing work. dimensions shown are computer generated and the contractor is to apply standard building tolerances.

verified suitable for the use stipulated by the relevant revision/issue only if initialled and checked by an authorised dem (austr) Pty limited representative.

amendments		by		checked		verified	
no.	date	amendment	chkd	init	chkd	init	chkd
A01	08/02/10	ISSUE FOR CLIENT REVIEW	JL	JL	CM	CM	CM
A02	19/02/10	DA ISSUE	MF	MF	CM	CM	CM

north point

division: landscape architecture

level 8 15 help street chatswood nsw 2067  
p: po box 5036 west chatswood nsw 1515  
t: (02) 8966 6000 f: (02) 8966 6111  
e: sydney@dem.com.au

project/client

**Global Sydney Switch 2 Extension**  
**273 Pyrmont Road**  
**Ultimo NSW 2007**

Global Switch Property (Australia)  
400 Harris Street  
Ultimo NSW 2007

consultant

Aurecon Group  
116 Military Road  
Neutral bay  
NSW 2089

drawing title

**Landscape Plan**  
**Ground Floor**

**da issue**

original	scale	drawing	project no.
b1	1:200	JL	4019-01

drawing no.

**la -- 0501**

Design Zone Number

A02