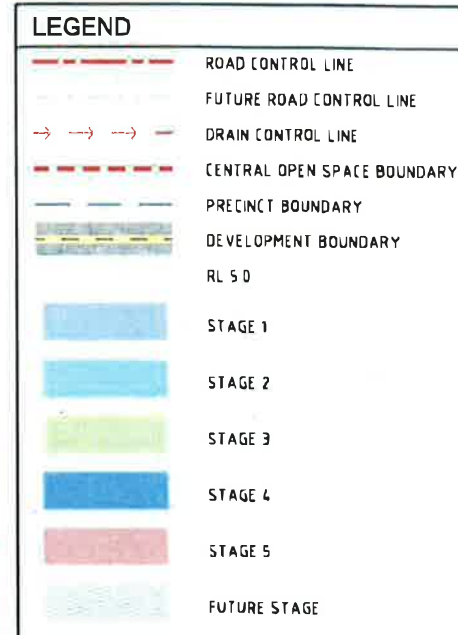


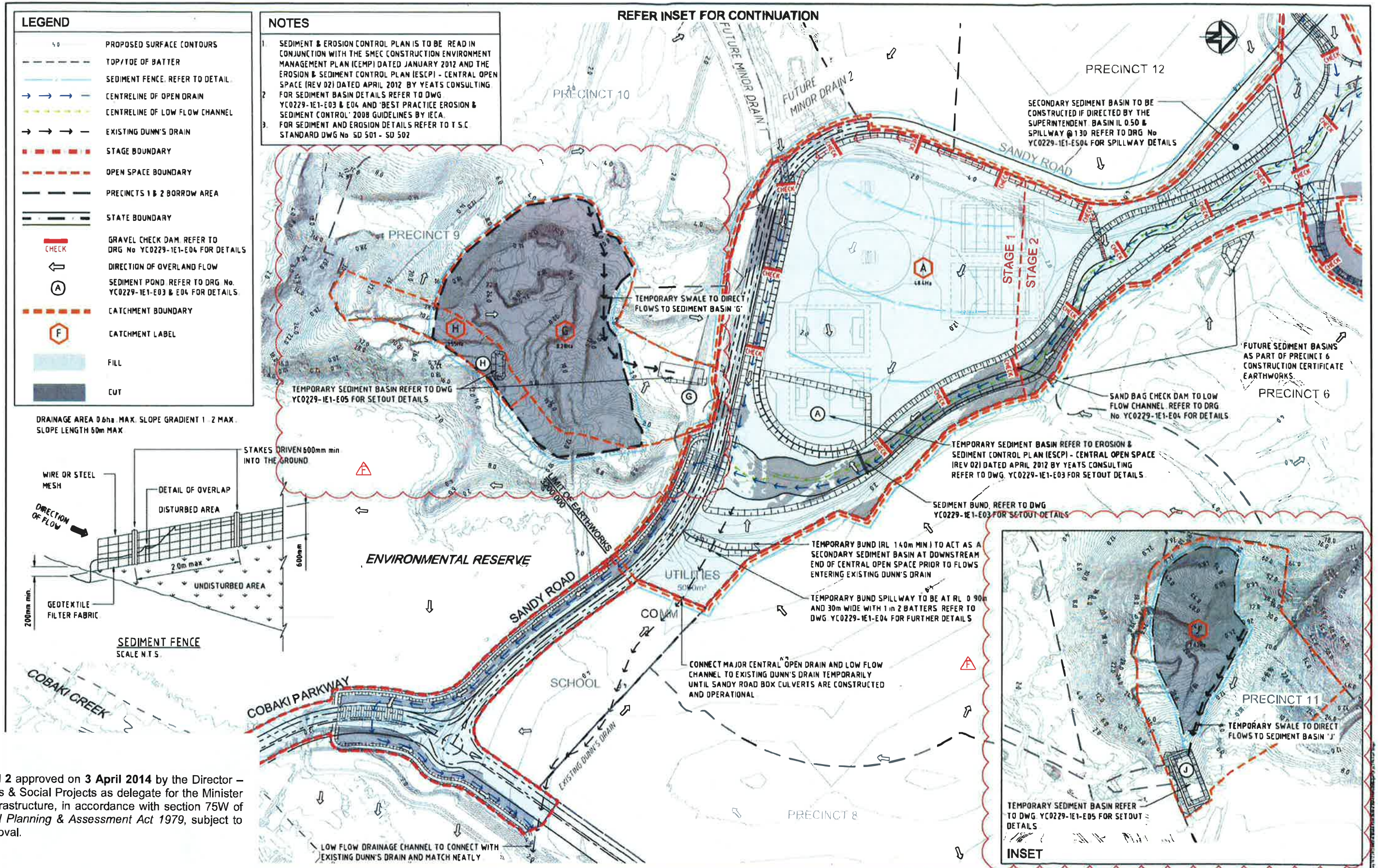


PHASING OF WORKS IS INDICATIVE ONLY WORKS NOT NECESSARILY IN CHRONOLOGICAL ORDER



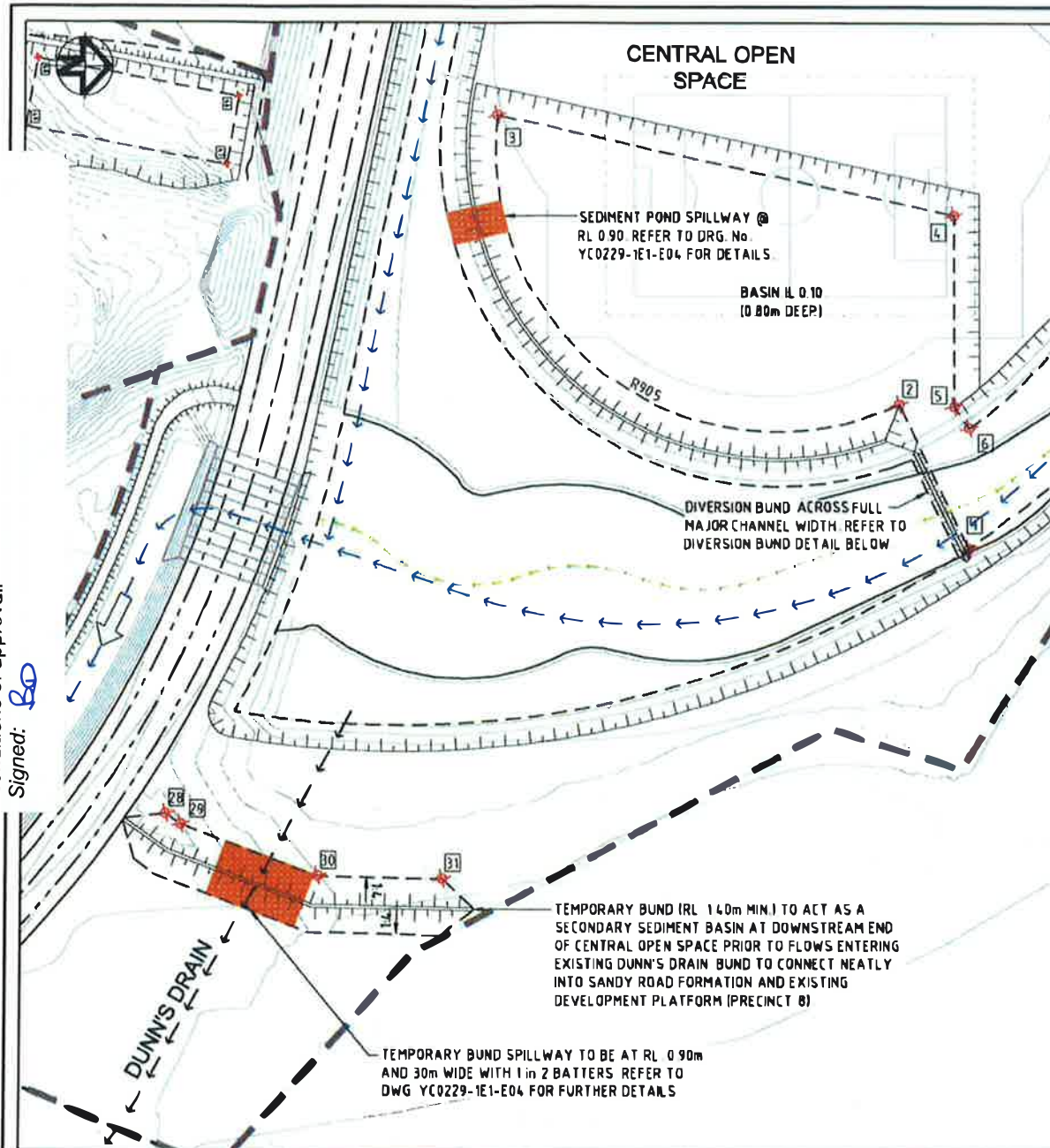
STATUS CONSTRUCTION CERTIFICATE FOR APPROVAL				THIS DESIGN AND PLAN IS COPYRIGHT AND IS NOT TO BE USED OR REPRODUCED WHOLLY OR IN PART OR TO BE USED ON ANY PROJECT WITHOUT THE WRITTEN PERMISSION OF YEATS CONSULTING PTY LTD				CLIENT LEDA MANORSTEAD Pty Ltd		PROJECT COBAKI, TWEED HEADS WEST CENTRAL OPEN SPACE BULK EARTHWORKS CONSTRUCTION CERTIFICATE CIVIL ENGINEERING DRAWINGS								TITLE SCOPE OF WORKS & KEY SHEET PLAN																											
F	PRECINCT 9 AND PRECINCT 11 BORROW AREAS ADDED		MB	10 12 13	DRAWING IS NOT TO BE SCALED SCALE (AT ORIGINAL SHEET SIZE) 				ORIGINAL SHEET SIZE  A1	LEVEL 1, 193 FERRY ROAD SOUTHPORT QLD 4215 AUSTRALIA T 07 5558 4200 F 07 5503 1672 info@yeats.com.au www.yeats.com.au				<table><tr><th>TASK</th><th>BY</th><th>INITIAL</th><th>DATE</th><th>APPROVED</th><th>RPEQ No</th><th>7</th></tr><tr><td>REVIEW</td><td>CS</td><td></td><td>18 03 11</td><td></td><td></td><td></td></tr><tr><td>DESIGN</td><td>CJE</td><td></td><td>18 03 11</td><td></td><td></td><td></td></tr><tr><td>DRAWING</td><td>GJS</td><td></td><td>18 03 11</td><td></td><td></td><td></td></tr></table>				TASK	BY	INITIAL	DATE	APPROVED	RPEQ No	7	REVIEW	CS		18 03 11				DESIGN	CJE		18 03 11				DRAWING	GJS		18 03 11			
TASK	BY	INITIAL	DATE	APPROVED														RPEQ No	7																										
REVIEW	CS		18 03 11																																										
DESIGN	CJE		18 03 11																																										
DRAWING	GJS		18 03 11																																										
E	MINOR OPEN DRAIN'S ADDED TO DRAWING SET		TW	02 10 13																																									
D	BULK EARTHWORKS CONSTRUCTION CERTIFICATE		MG	15 02 13																																									
C	RESPONSE TO 3rd PARTY SWMP REVIEW		HW	18 10 12																																									
B	RESPONSE TO TSC REQUEST FOR INFORMATION (RFI)		HW	04 05 12																																									
A	ORIGINAL ISSUE		GS	18 03 11																																									
REV	DESCRIPTION		DRAWN	DATE																																									





CONSTRUCTION CERTIFICATE				CLIENT		PROJECT		TITLE	
STATUS				LEDA MANORSTEAD Pty Ltd		COBAKI, TWEED HEADS WEST CENTRAL OPEN SPACE BULK EARTHWORKS CONSTRUCTION CERTIFICATE CIVIL ENGINEERING DRAWINGS		EROSION & SEDIMENT CONTROL PLAN SHEET 1 OF 2	
F	PRECINCT 9 AND PRECINCT 11 BORROW AREAS ADDED	MB	11 12 13					TASK	BY
E	MINOR OPEN DRAINS ADDED TO DRAWING SET	TW	02 10 13					REVIEW	CS
D	BULK EARTHWORKS CONSTRUCTION CERTIFICATE	MG	15 02 13					DESIGN	CJE
C	RESPONSE TO 3rd PARTY SWMP REVIEW	HW	18 10 12					DRAWN	GS
B	RESPONSE TO TSC REQUEST FOR INFORMATION (RFI)	HW	04 05 12					APPROVED	
A	ORIGINAL ISSUE	GS	18 03 11					REVISION	
REV	DESCRIPTION	DRAWN	DATE					YC0229-1E1-E01	F





**SEDIMENT BASIN A & TEMPORARY BUND**  
SCALE 1:1000

**SEDIMENT POND A SIZING DETAILS**

CATCHMENT AREA = 4.8 ha  
TOTAL SEDIMENT YIELD = 664m<sup>3</sup>/year

**MINIMUM REQUIRED DEPTH, SURFACE AREA AND VOLUME**

SEDIMENT POND DEPTH = 0.65m  
SEDIMENT POND AREA = 8877m<sup>2</sup>  
SEDIMENT POND VOLUME = 5791m<sup>3</sup>

**SEDIMENT POND B SIZING DETAILS**

CATCHMENT AREA = 9.9 ha  
TOTAL SEDIMENT YIELD = 136m<sup>3</sup>/year

**MINIMUM REQUIRED DEPTH, SURFACE AREA AND VOLUME**

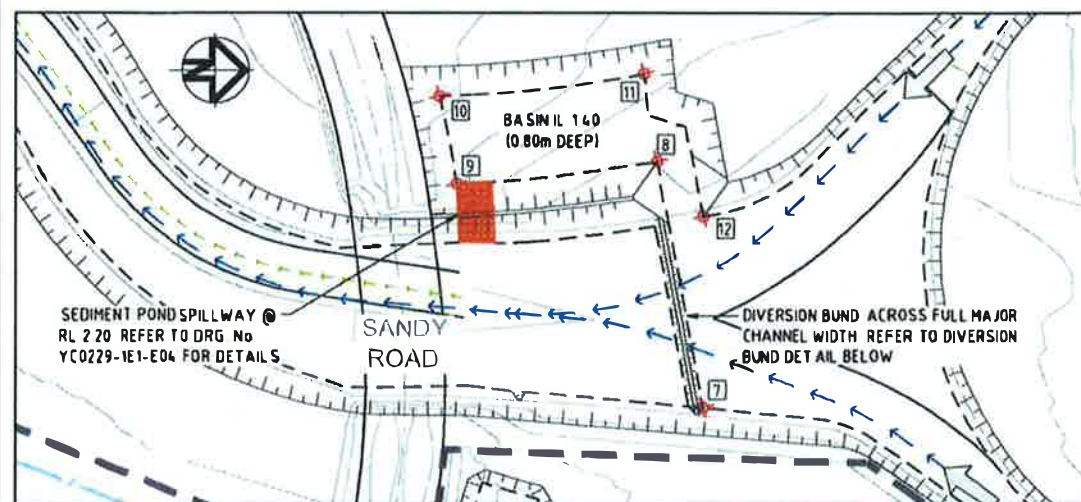
SEDIMENT POND DEPTH = 0.65m  
SEDIMENT POND AREA = 1816m<sup>2</sup>  
SEDIMENT POND VOLUME = 1184m<sup>3</sup>

**SEDIMENT POND C SIZING DETAILS**

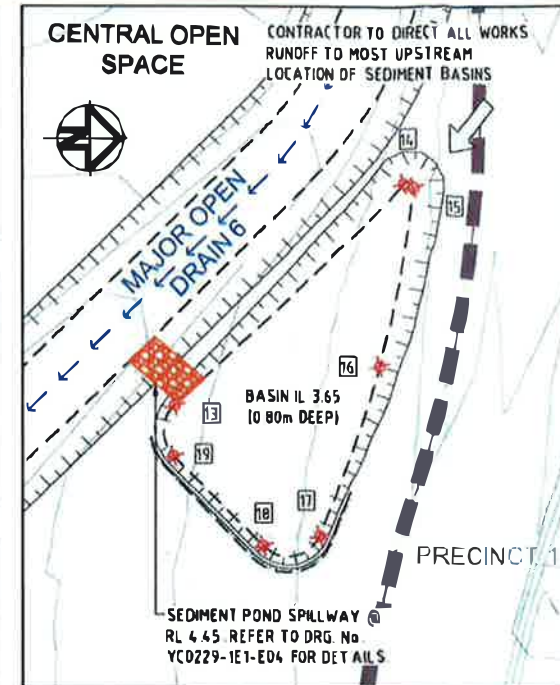
CATCHMENT AREA = 6.7 ha  
TOTAL SEDIMENT YIELD = 92m<sup>3</sup>/year

**MINIMUM REQUIRED DEPTH, SURFACE AREA AND VOLUME**

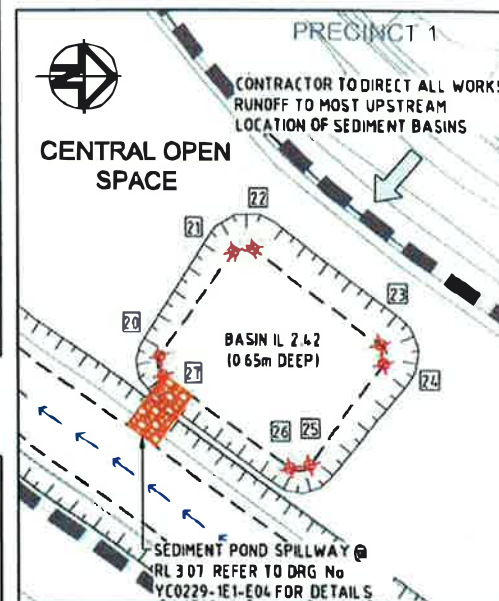
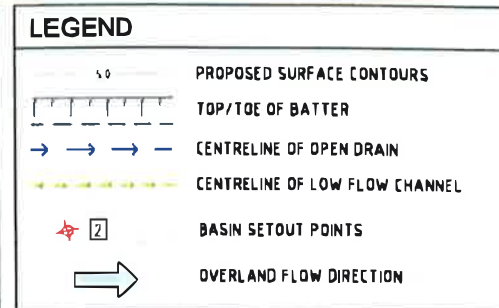
SEDIMENT POND DEPTH = 0.65m  
SEDIMENT POND AREA = 1229m<sup>2</sup>  
SEDIMENT POND VOLUME = 802m<sup>3</sup>



**SEDIMENT BASIN B**  
SCALE 1:1000



**SEDIMENT BASIN C**  
SCALE 1:500



**SEDIMENT BASIN D**  
SCALE 1:500

**SEDIMENT BASIN SET OUT**

POINT	EASTING	NORTHING
1	47027 224	81571 402
2	46980 506	81549 199
3	46887 968	81420 473
4	46919 841	81566 892
5	46981 202	81566 859
6	46988 220	81571 607
7	46619 513	83091 685
8	46549 702	83078 559
9	46556 046	83021 835
10	46531 227	83016 920
11	46524 847	83074 840
12	46565 319	83091 679
13	46487 054	83213 688
14	46455 578	83246 435
15	46456 175	83247 870
16	46481 404	83243 000
17	46505 631	83234 442
18	46507 148	83226 226
19	46494 299	83213 536
20	46696 608	83269 765
21	46681 613	83280 634
22	46681 227	83283 504
23	46694 957	83301 218
24	46697 731	83301 638
25	46711 998	83291 342
26	46712 586	83288 400
27	46699 401	83270 210
28	47112 803	81313 782
29	47116 118	81318 697
30	47132 762	81362 683
31	47133 641	81402 533

**SILT MANAGEMENT PROGRAM**

PHASE	DESCRIPTION
ALL WORKS	- SILT FENCES TO BE ERECTED AT THE LOCATIONS SHOWN ON DWG'S YC0229-1E1-E01 & E02
ROADWORKS	- MEASURES ARE TO BE TAKEN TO PREVENT SILT INGRESS TO STORMWATER SYSTEM
MAINTENANCE PERIOD	- EROSION CONTROL MEASURES ARE TO BE INSPECTED AFTER MAJOR EVENTS (> 25mm) ANY REPAIRS REQUIRED ARE TO BE EFFECTED IMMEDIATELY

**GENERAL NOTES**

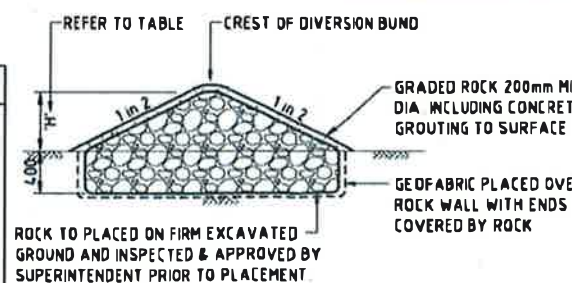
1. THE CONTRACTOR IS TO TAKE ALL NECESSARY PRECAUTIONS TO CONTROL EROSION AND DOWNSTREAM SEDIMENTATION DURING ALL STAGES OF CONSTRUCTION INCLUDING THE MAINTENANCE PERIOD
2. ALL SEDIMENT CONTROL DEVICES TO T S C STANDARDS AND SPECIFICATIONS REFER DWG No. S.D.501 - S.D.502
3. CONTRACTOR TO DIRECT ALL WORKS RUNOFF TO SEDIMENT BASINS TO THE MOST UPSTREAM LOCATION OF THE BASIN FROM THE SPILLWAY OUTLET
4. SEDIMENT BASINS ARE TO BE CONSTRUCTED IN ACCORDANCE WITH THE DETAILS DESCRIBED IN 'BEST PRACTICE EROSION & SEDIMENT CONTROL' 2008 GUIDELINES BY THE INTERNATIONAL EROSION CONTROL ASSOCIATION (IECA) FOR SEDIMENT BASIN LOCATION, REFER DWGS YC0229-1E1-E01 & E02
- 5.

**SEDIMENT POND D SIZING DETAILS**

CATCHMENT AREA = 3.5 ha  
TOTAL SEDIMENT YIELD = 4.8m<sup>3</sup>/year

**MINIMUM REQUIRED DEPTH, SURFACE AREA AND VOLUME**

SEDIMENT POND DEPTH = 0.65m  
SEDIMENT POND AREA = 642m<sup>2</sup>  
SEDIMENT POND VOLUME = 419m<sup>3</sup>



**DIVERSION BUND DETAIL**  
N.T.S.

STATUS	CONSTRUCTION CERTIFICATE	FOR APPROVAL
D	TITLE REVISED	M.B. 16.12.13
C	BULK EARTHWORKS CONSTRUCTION CERTIFICATE	M.G. 15.02.13
B	RESPONSE TO 3rd PARTY SWMP REVIEW	H.W. 18.10.12
A	ORIGINAL ISSUE	G.S. 10.03.11
REV	DESCRIPTION	DRAWN DATE

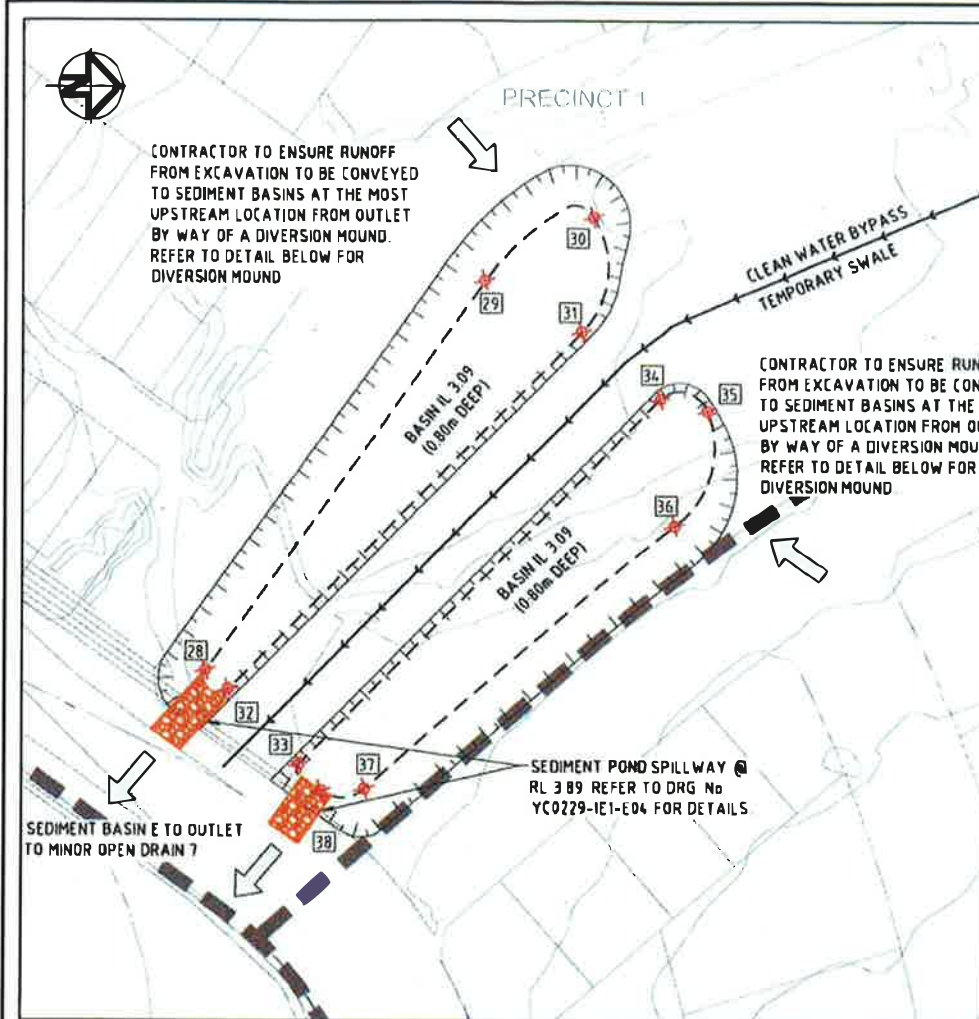
THIS DESIGN AND PLAN IS COPYRIGHT AND IS NOT TO BE USED OR REPRODUCED WHOLLY OR IN PART OR TO BE USED ON ANY PROJECT WITHOUT THE WRITTEN PERMISSION OF YEATS CONSULTING PTY LTD	
SCALE	(AT ORIGINAL SHEET SIZE)
AS SHOWN	
ORIGINAL SHEET SIZE	A1

CLIENT	LEDA MANORSTEAD Pty Ltd
PROJECT	COBAKI, TWEED HEADS WEST CENTRAL OPEN SPACE BULK EARTHWORKS CONSTRUCTION CERTIFICATE CIVIL ENGINEERING DRAWINGS

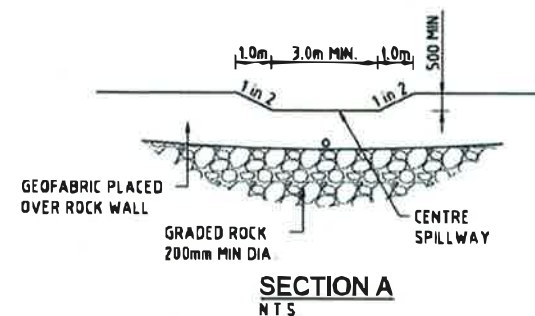
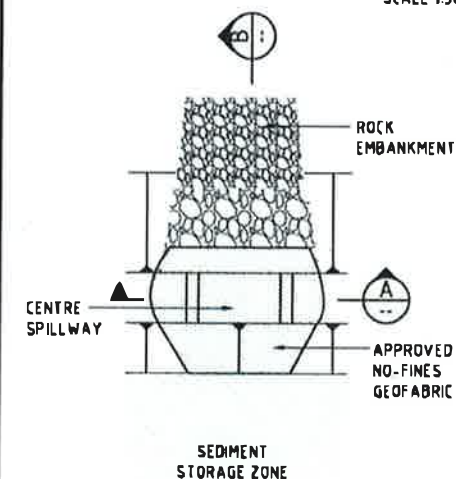
<b>SEDGMAN YEATS</b>	
LEVEL 1, 103 FERRY ROAD SOUTHPORT QLD 4215 AUSTRALIA T 07 5558 4200 F 07 5553 1672 info@yeats.com.au www.yeats.com.au	

SEDIMENT BASIN SETOUT DETAILS SHEET 1 OF 3				
TASK	BY	INITIAL	DATE	APPROVED
REVIEW	CS		18.03.11	
DESIGN	CJE		18.03.11	
DRAWN	GS		18.03.11	
DRAWING NUMBER				YC0229-1E1-E03
REVISION				D





**SEDIMENT BASIN E**  
SCALE 1:500

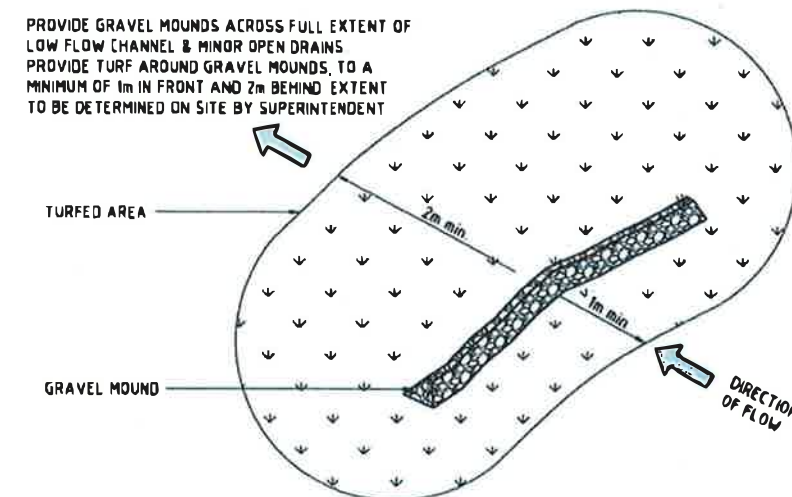


**SEDIMENT BASIN DETAILS**  
NTS

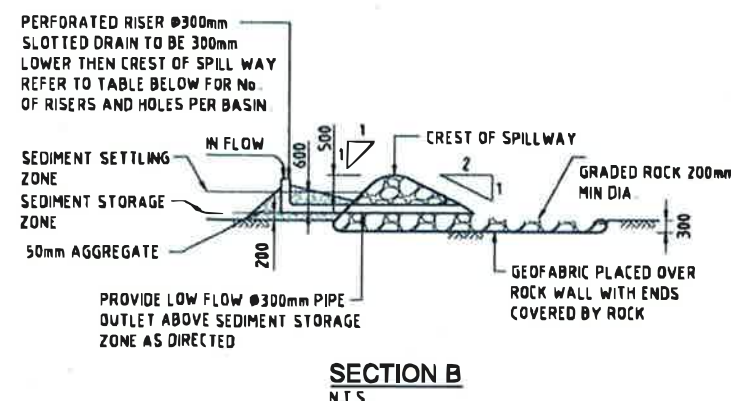
SEDIMENT BASIN SET OUT		
POINT	EASTING	NORTHING
28	46727 151	83414 755
29	46671 655	83454 384
30	46662 743	83469 658
31	46678 941	83467 927
32	46729 842	83417 963
33	46740 601	83427 860
34	46688 473	83479 029
35	46690 144	83485 102
36	46706 604	83481 074
37	46744 088	83437 156
38	46744 374	83430 912
39	46914 519	83348 764
40	46861 498	83362 253
41	46860 776	83363 467
42	46869 210	83396 618
43	46870 582	83397 285
44	46901 348	83376 527
45	46915 726	83350 006

SEDIMENT POND E SIZING DETAILS	
CATCHMENT AREA = 16.7ha	TOTAL SEDIMENT YIELD = 229m <sup>3</sup> /year
MINIMUM REQUIRED DEPTH, SURFACE AREA AND VOLUME	
SEDIMENT POND DEPTH = 0.65m	
SEDIMENT POND AREA = 3063m <sup>2</sup>	
SEDIMENT POND VOLUME = 1998m <sup>3</sup>	

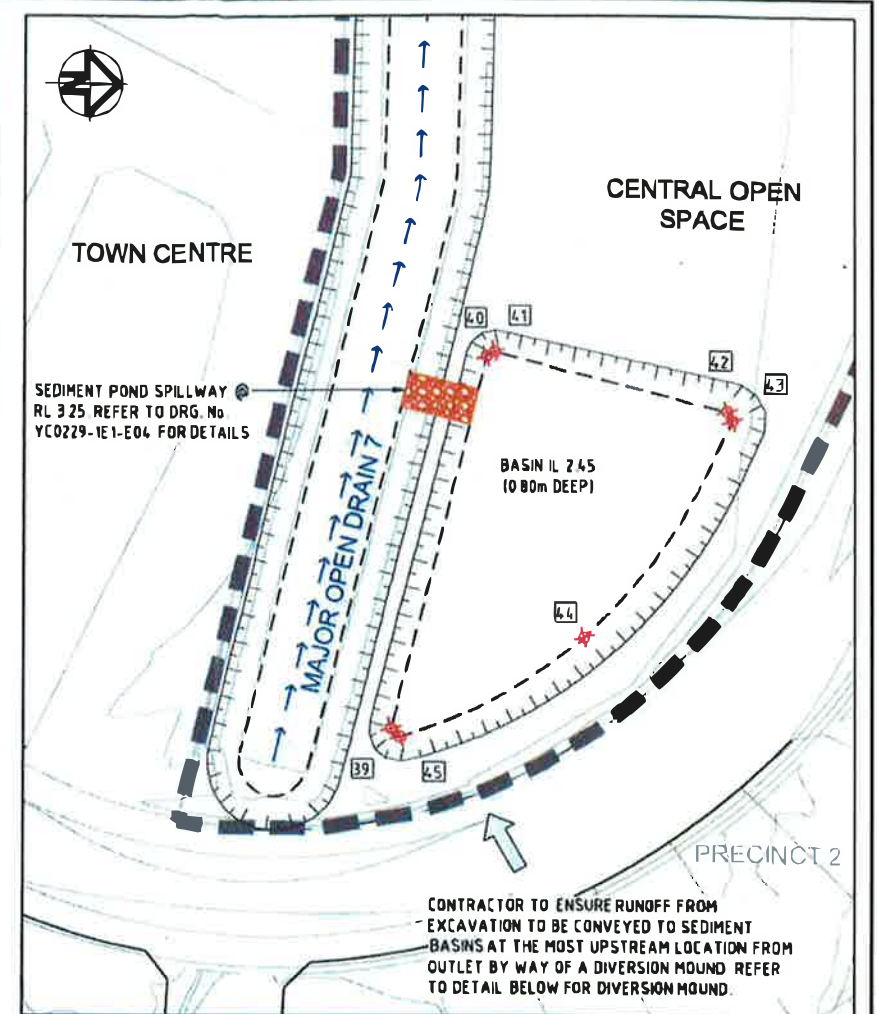
SEDIMENT POND F SIZING DETAILS	
CATCHMENT AREA = 8.7ha	TOTAL SEDIMENT YIELD = 119m <sup>3</sup> /year
MINIMUM REQUIRED DEPTH, SURFACE AREA AND VOLUME	
SEDIMENT POND DEPTH = 0.65m	
SEDIMENT POND AREA = 1596m <sup>2</sup>	
SEDIMENT POND VOLUME = 1041m <sup>3</sup>	



**GRAVEL CHECK DAM - OPEN DRAINS**  
SCALE NTS



**SECTION B**  
NTS

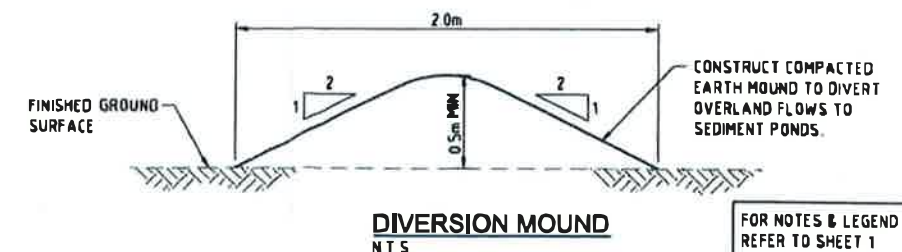


**SEDIMENT BASIN F**  
SCALE 1:500



MP 08\_0200 Mod 2 approved on 3 April 2014 by the Director – Industry, Key Sites & Social Projects as delegate for the Minister for Planning & Infrastructure, in accordance with section 75W of the *Environmental Planning & Assessment Act 1979*, subject to conditions of approval.

Signed: *[Signature]*



**DIVERSION MOUND**  
NTS

FOR NOTES & LEGEND  
REFER TO SHEET 1

CONSTRUCTION CERTIFICATE	
STATUS	FOR APPROVAL
D TITLE REVISED	M B. 14.12.13
C BULK EARTHWORKS CONSTRUCTION CERTIFICATE	M G. 15.02.13
B RESPONSE TO 3rd PARTY SWMP REVIEW	H W. 18.10.12
A ORIGINAL ISSUE	G S. 18.03.11
REV	DESCRIPTION
	DRAWN DATE

THIS DESIGN AND PLAN IS COPYRIGHT AND IS NOT TO BE USED OR REPRODUCED WHOLLY OR IN PART OR TO BE USED ON ANY PROJECT WITHOUT THE WRITTEN PERMISSION OF YEATS CONSULTING PTY LTD	
DRAWING IS NOT TO BE SCALED	SCALE (AT ORIGINAL SHEET SIZE)
AS SHOWN	ORIGINAL SHEET SIZE
	A1

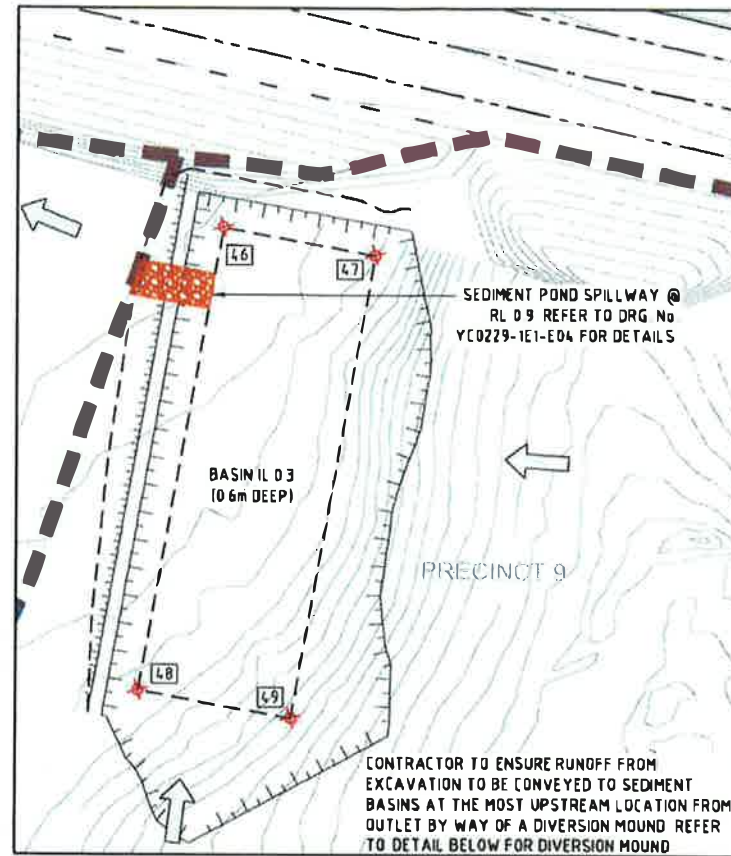
CLIENT	LEDA MANORSTEAD Pty Ltd
PROJECT	COBAKI, TWEED HEADS WEST CENTRAL OPEN SPACE BULK EARTHWORKS CONSTRUCTION CERTIFICATE CIVIL ENGINEERING DRAWINGS



SEDIMENT BASIN SETOUT DETAILS SHEET 2 OF 3				
TASK	BY	INITIAL	DATE	APPROVED
REVIEW	CS		18.03.11	RPED No 7817
DESIGN	CJE		18.03.11	DRAWING NUMBER
DRAWN	GS		18.03.11	YC0229-1E1-E04
				REVISION
				D



MP 08\_0200 Mod 2 approved on 3 April 2014 by the Director – Industry, Key Sites & Social Projects as delegate for the Minister for Planning & Infrastructure, in accordance with section 75W of the *Environmental Planning & Assessment Act 1979*, subject to conditions of approval.  
Signed: *BD*



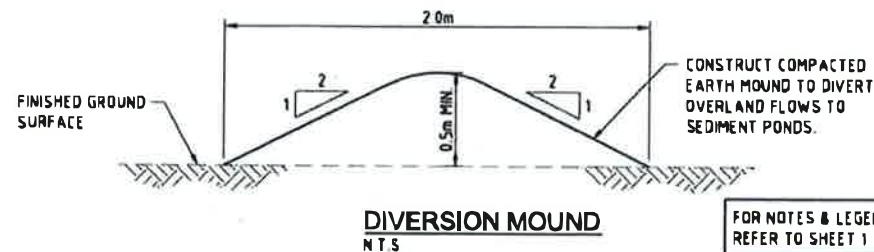
**SEDIMENT BASIN G**  
SCALE 1:500

**SEDIMENT POND G SIZING DETAILS**

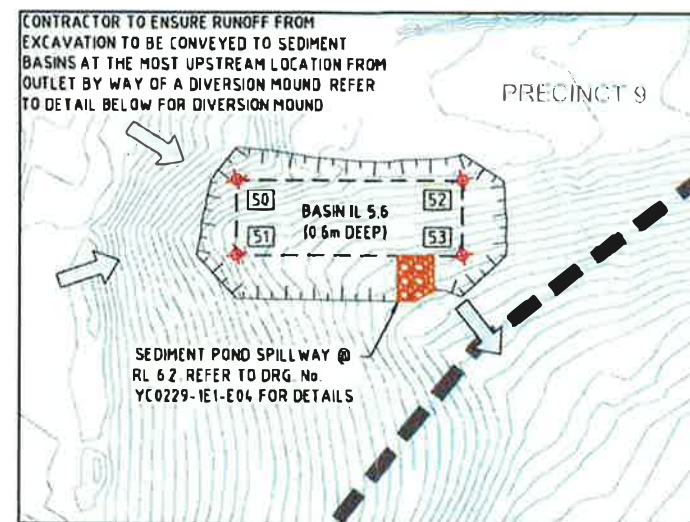
CATCHMENT AREA = 8.28ha  
TOTAL SEDIMENT YIELD = 114m<sup>3</sup>/year

**MINIMUM REQUIRED DEPTH, SURFACE AREA AND VOLUME**

SEDIMENT POND DEPTH = 0.6m  
SEDIMENT POND AREA = 1519m<sup>2</sup>  
SEDIMENT POND VOLUME = 991m<sup>3</sup>



FOR NOTES & LEGEND REFER TO SHEET 1



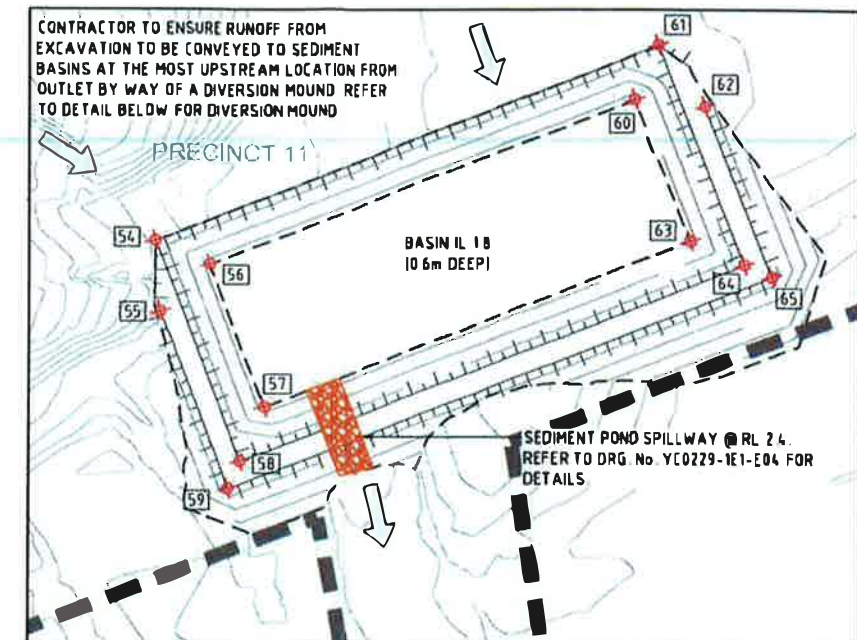
**SEDIMENT BASIN H**  
SCALE 1:500

**SEDIMENT POND H SIZING DETAILS**

CATCHMENT AREA = 1.55ha  
TOTAL SEDIMENT YIELD = 25m<sup>3</sup>/year

**MINIMUM REQUIRED DEPTH, SURFACE AREA AND VOLUME**

SEDIMENT POND DEPTH = 0.6m  
SEDIMENT POND AREA = 284m<sup>2</sup>  
SEDIMENT POND VOLUME = 188m<sup>3</sup>



**SEDIMENT BASIN J**  
SCALE 1:500

**SEDIMENT POND J SIZING DETAILS**

CATCHMENT AREA = 7.62ha  
TOTAL SEDIMENT YIELD = 104m<sup>3</sup>/year

**MINIMUM REQUIRED DEPTH, SURFACE AREA AND VOLUME**

SEDIMENT POND DEPTH = 0.6m  
SEDIMENT POND AREA = 1398m<sup>2</sup>  
SEDIMENT POND VOLUME = 912m<sup>3</sup>

**SEDIMENT BASIN SET OUT**

POINT	EASTING	NORTHING
46	46882.1893	81336.9018
47	46898.3567	81333.9720
48	46873.4001	81288.3998
49	46889.5674	81285.4700
50	46855.2075	81036.3076
51	46855.2075	81025.6850
52	46887.0753	81036.3076
53	46887.0753	81025.6850
54	46196.1816	81450.9235
55	46196.8797	81440.8717
56	46203.9509	81447.5121
57	46211.8270	81427.3050
58	46208.4156	81419.5357
59	46206.7099	81415.6510
60	46264.5723	81411.1404
61	46267.9837	81478.9098
62	46274.6409	81470.0907
63	46272.4484	81450.9333
64	46280.2177	81447.5219
65	46284.1024	81445.8162

FOR NOTES & LEGEND REFER TO SHEET 1

CONSTRUCTION CERTIFICATE FOR APPROVAL			
STATUS			
REV	DESCRIPTION	DRAWN	DATE
A	ORIGINAL ISSUE	GS	11/12/13

THIS DESIGN AND PLAN IS COPYRIGHT AND IS NOT TO BE USED OR REPRODUCED WHOLLY OR IN PART OR TO BE USED ON ANY PROJECT WITHOUT THE WRITTEN PERMISSION OF YEATS CONSULTING PTY LTD	
DRAWING IS NOT TO BE SCALED	
SCALE	(AT ORIGINAL SHEET SIZE)
AS SHOWN	
ORIGINAL SHEET SIZE	A1

CLIENT	LEDA MANORSTEAD Pty Ltd
PROJECT	COBAKI, TWEED HEADS WEST CENTRAL OPEN SPACE BULK EARTHWORKS CONSTRUCTION CERTIFICATE CIVIL ENGINEERING DRAWINGS
	<b>LEDA</b>

**SEDGMAN YEATS**

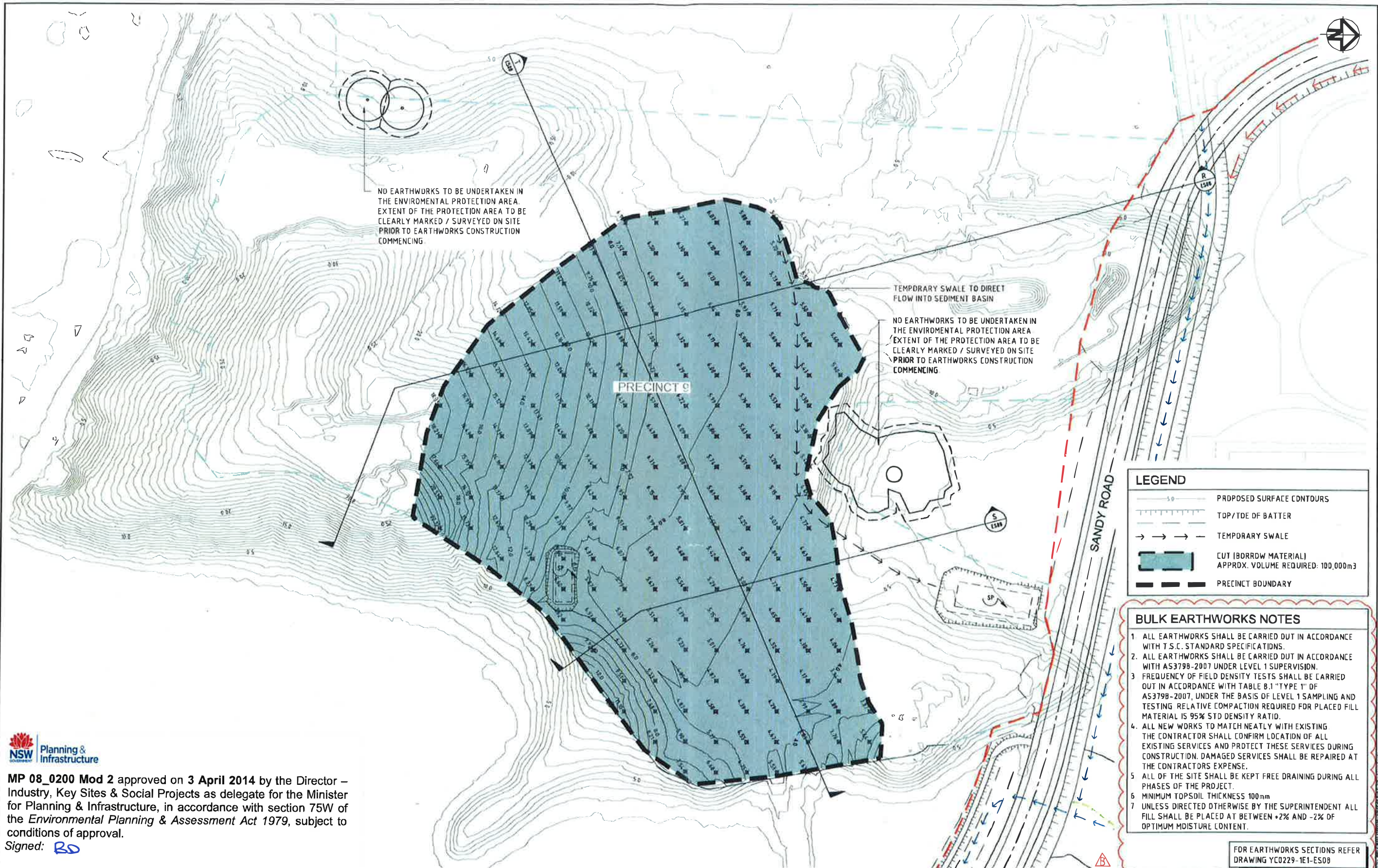
LEVEL 1, 183 FERRY ROAD SOUTHPORT QLD 4215 AUSTRALIA  
T 07 5558 4200 F 07 5583 1672 info@yeats.com.au www.yeats.com.au

TITLE SEDIMENT BASIN SETOUT DETAILS SHEET 3 OF 3					
TASK	BY	INITIAL	DATE	APPROVED	RPED No 7817
REVIEW	CS		18/03/11		
DESIGN	CJE		18/03/11		
DRAWN	GS		18/03/11		
DRAWING NUMBER YC0229-1E1-E05				REVISION	A











MP 08\_0200 Mod 2 approved on 3 April 2014 by the Director – Industry, Key Sites & Social Projects as delegate for the Minister for Planning & Infrastructure, in accordance with section 75W of the *Environmental Planning & Assessment Act 1979*, subject to conditions of approval.  
Signed:

LEGEND	
	PROPOSED SURFACE CONTOURS
	TOP/TDE OF BATTER
	TEMPORARY SWALE
	CUT (BORROW MATERIAL) APPROX. VOLUME REQUIRED: 100,000m <sup>3</sup>
	PRECINCT BOUNDARY

- BULK EARTHWORKS NOTES**
1. ALL EARTHWORKS SHALL BE CARRIED OUT IN ACCORDANCE WITH T.S.C. STANDARD SPECIFICATIONS.
  2. ALL EARTHWORKS SHALL BE CARRIED OUT IN ACCORDANCE WITH AS3798-2007 UNDER LEVEL 1 SUPERVISION.
  3. FREQUENCY OF FIELD DENSITY TESTS SHALL BE CARRIED OUT IN ACCORDANCE WITH TABLE 8.1 "TYPE 1" OF AS3798-2007, UNDER THE BASIS OF LEVEL 1 SAMPLING AND TESTING RELATIVE COMPACTION REQUIRED FOR PLACED FILL MATERIAL IS 95% STD DENSITY RATIO.
  4. ALL NEW WORKS TO MATCH NEATLY WITH EXISTING THE CONTRACTOR SHALL CONFIRM LOCATION OF ALL EXISTING SERVICES AND PROTECT THESE SERVICES DURING CONSTRUCTION. DAMAGED SERVICES SHALL BE REPAIRED AT THE CONTRACTORS EXPENSE.
  5. ALL OF THE SITE SHALL BE KEPT FREE DRAINING DURING ALL PHASES OF THE PROJECT.
  6. MINIMUM TOPSOIL THICKNESS 100mm
  7. UNLESS DIRECTED OTHERWISE BY THE SUPERINTENDENT ALL FILL SHALL BE PLACED AT BETWEEN +2% AND -2% OF OPTIMUM MOISTURE CONTENT.

FOR EARTHWORKS SECTIONS REFER  
DRAWING YC0229-1E1-ES08

STATUS CONSTRUCTION CERTIFICATE FOR APPROVAL				THIS DESIGN AND PLAN IS COPYRIGHT AND IS NOT TO BE USED OR REPRODUCED WHOLLY OR IN PART OR TO BE USED ON ANY PROJECT WITHOUT THE WRITTEN PERMISSION OF YEATS CONSULTING PTY LTD				CLIENT LEDA MANORSTEAD Pty Ltd		PROJECT COBAKI, TWEED HEADS WEST CENTRAL OPEN SPACE BULK EARTHWORKS CONSTRUCTION CERTIFICATE CIVIL ENGINEERING DRAWINGS		 SEDGMAN YEATS LEVEL 1, 193 FERRY ROAD SOUTHPORT QLD 4215 AUSTRALIA T 07 5558 4200 F 07 5503 1672 info@yeats.com.au www.yeats.com.au		TITLE PRECINCT 9 BORROW AREA EARTHWORKS PLAN			
DRAWING IS NOT TO BE SEALED				SCALE (AT ORIGINAL SHEET SIZE)				ORIGINAL SHEET SIZE									
SCALE 10 0 10 20 30 40 50 1:1000				A1													
B RESPONSE TO TSC COMMENTS (RE: MP08_0200 Mod 2)				CS 10.03.14								TASK BY INITIAL DATE APPROVED RPE No 7817					
A ORIGINAL ISSUE				GS 11.12.13								REVIEW CS 11.12.13		DRAWING NUMBER		REVISION	
REV DESCRIPTION DRAWN DATE												DESIGN CJE 11.12.13		YC0229-1E1-EW13		B	
												DRAWN GS 11.12.13					

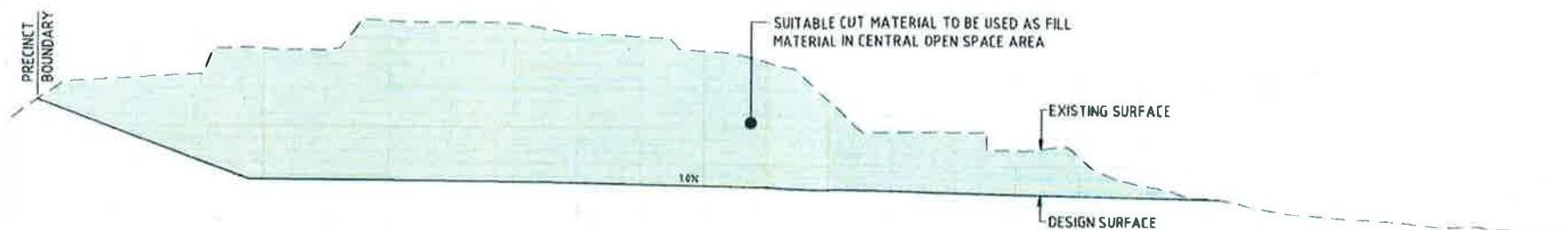




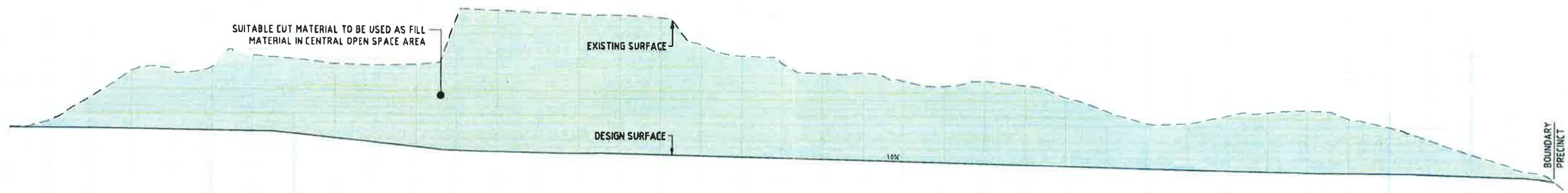


MP 08\_0200 Mod 2 approved on 3 April 2014 by the Director – Industry, Key Sites & Social Projects as delegate for the Minister for Planning & Infrastructure, in accordance with section 75W of the *Environmental Planning & Assessment Act 1979*, subject to conditions of approval.

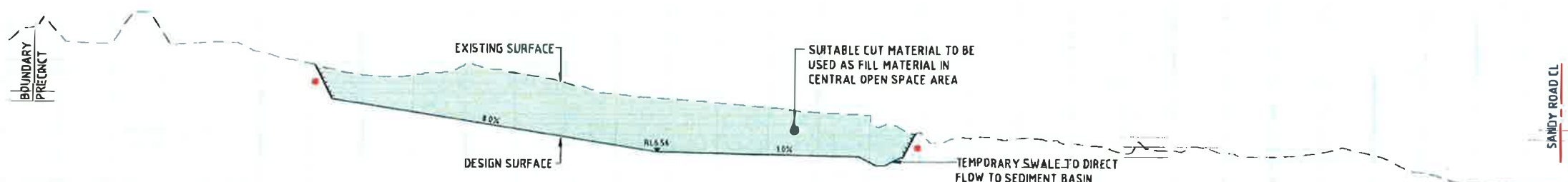
Signed: *BO*



SECTION S  
SCALE 1:500 h  
SCALE 1:250 v




SECTION T  
SCALE 1:500 h  
SCALE 1:250 v



SECTION R  
SCALE 1:1000 h  
SCALE 1:500 v

**NOTE**  
\* CONTRACTOR TO APPLY A TEMPORARY 1 in 2 BATTER AT THIS LOCATION DURING BULK EARTHWORKS PHASE. LANDFORMING OF FUTURE EARTHWORKS IS TO BE UNDERTAKEN AS PART OF FUTURE WORKS OF PRECINCT 9 AND SHALL NOT BE INCLUDED IN THE BORROW AREAS FOR THE CENTRAL OPEN SPACE.

**LEGEND**  
— FINAL DESIGN SURFACE  
--- EXISTING DESIGN SURFACE  
\* TEMPORARY 1 in 2 BATTER  
[Shaded Area] CUT (BORROW MATERIAL)

STATUS										CONSTRUCTION CERTIFICATE										FOR APPROVAL										THIS DESIGN AND PLAN IS COPYRIGHT AND IS NOT TO BE USED OR REPRODUCED WHOLLY OR IN PART OR TO BE USED ON ANY PROJECT WITHOUT THE WRITTEN PERMISSION OF YEATS CONSULTING PTY LTD										CLIENT										LEDA MANORSTEAD Pty Ltd										PROJECT										COBAKI, TWEED HEADS WEST CENTRAL OPEN SPACE BULK EARTHWORKS CONSTRUCTION CERTIFICATE CIVIL ENGINEERING DRAWINGS										 LEVEL 1, 193 FERRY ROAD SOUTHPORT QLD 4215 AUSTRALIA T 07 5558 4200 F 07 5503 1672 info@yeats.com.au www.yeats.com.au										TITLE										PRECINCT 9 BORROW AREA EARTHWORKS SECTIONS																																																																																																																																																																																																																																																																																																																																																																																																																																																																																																																																																																																																																																																																																																																																																																																																																																																																																																																																																																																																																																																																																																																																																																																																																																																																																																																																																																																																																																																																																																																																																																																																																																																																																																																																																																																																																																																																																																																																																																																																																																																																																																																																																																																																																																																																																																																																																																																																																																																																																																																																																																																																																																																																																																																																																																																																																																																																																																																																																																																																																																																																																																																																																																																																																																																																																																																																																																																																																																																																																																																																																																																																																																																																																																																																																																																																																																																																																																																																																																																																																																																																																																																																																																																																																																																																																																																																																																																																																																																																																																																																																																																																																																																																																																																																																																																																																																																																																																																																																																																																																																																																																																																																																																																																																																																																																							
																														DRAWING IS NOT TO BE SCALED																																																																																																																																																																																																																																																																																																																																																																																																																																																																																																																																																																																																																																																																																																																																																																																																																																																																																																																																																																																																																																																																																																																																																																																																																																																																																																																																																																																																																																																																																																																																																																																																																																																																																																																																																																																																																																																																																																																																																																																																																																																																																																																																																																																																																																																																																																																																																																																																																																																																																																																																																																																																																																																																																																																																																																																																																																																																																																																																																																																																																																																																																																																																																																																																																																																																																																																																																																																																																																																																																																																																																																																																																																																																																																																																																																																																																																																																																																																																																																																																																																																																																																																																																																																																																																																																																																																																																																																																																																																																																																																																																																																																																																																																																																																																																																																																																																																																																																																																																																																																																																																																																																																																																																																																																																																																																																																																																													



