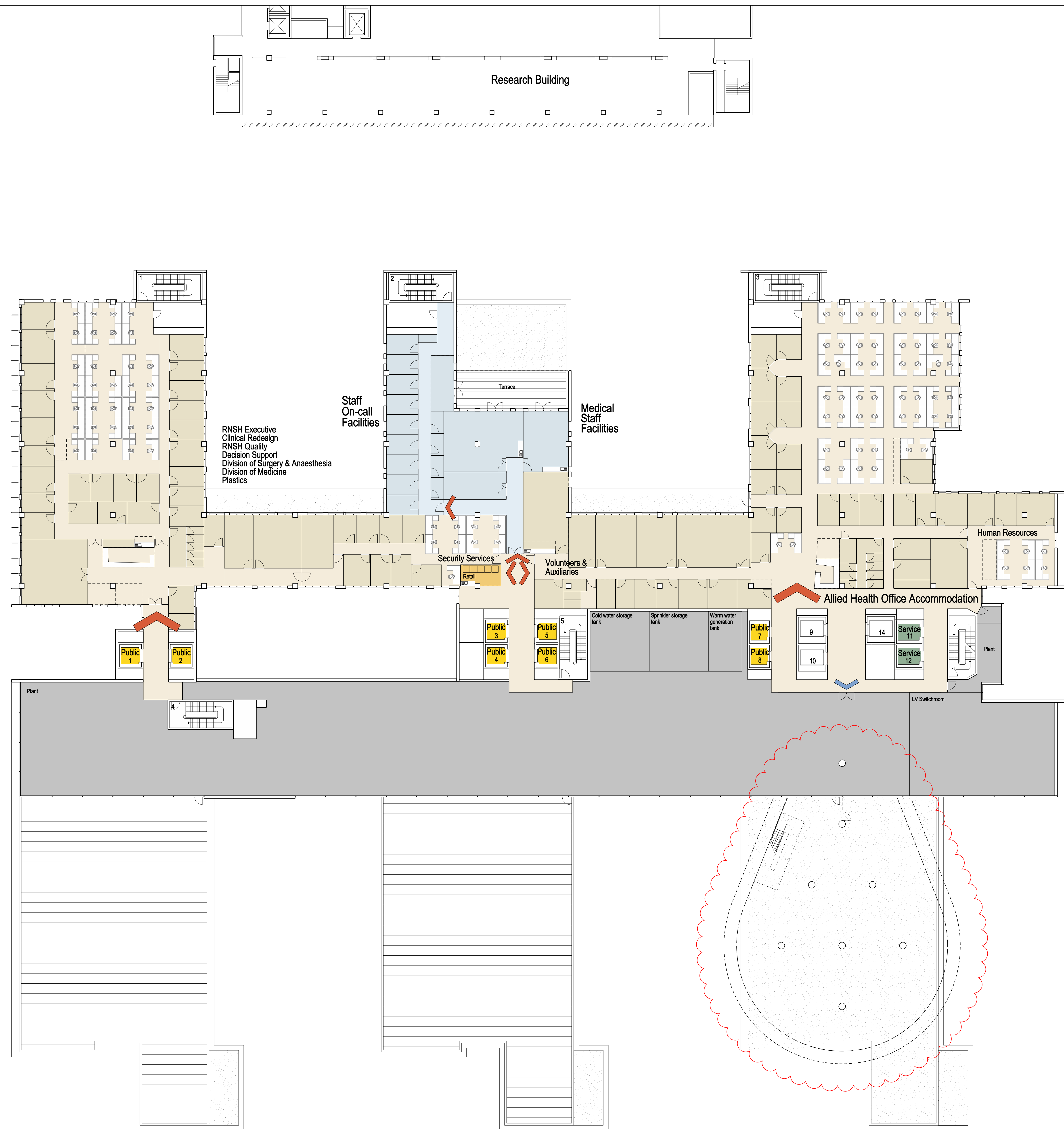


- Public/Visitor Lifts
- Inpatient/Staff Lifts
- Rapid Access Lift
- Service Lifts
- Public/Visitor Circulation
- Patient/Staff/Service Circulation
- Public Departmental Entry
- Service/Staff/Inpatient Entry
- Modifications to Project Approval



09

RL +120.30

ISSUE	DATE	FOR
T07	20.10.08	PROJECT APPLICATION
T08	06.05.10	75% APPLICATION
T09	04.08.10	75% APPLICATION