



STAGE 1
ILLAWARRA INTERNATIONAL
SPECIALIST AND SURGICENTRE
INCLUDING
10 OVERNIGHT BEDS
2 ICU BEDS
AUGMENTATION OF SERVICES TO SITE



STAGE 2
PATHOLOGY
&
RADIOLOGY UNITS



STAGE 3
24 HRS MEDICAL CENTRE,
PHARMACY
&
CASUALTY
WITH 10 OVERNIGHT BEDS



STAGE 4
STAND ALONE
OBSTETRIC UNIT
WITH
20 OVERNIGHT
ONE-BED SUITES



STAGE 5
ILLAWARRA INTERNATIONAL
HOSPITAL
WITH
240 OVERNIGHT BEDS
MIL SHOPPING PLAZA



STAGE 6
NURSES,
RESIDENT MEDICAL OFFICERS
&
MEDICAL STUDENT ACCOMMODATION
INTEGRAL WITH THE TERTIARY REFERRAL
HOSPITAL EDUCATIONAL PROGRAMME



STAGE 7
EDUCATION FACILITY
WITH ASSOCIATED ACCOMMODATION
FOR PATIENT'S RELATIVES & OUTPATIENT
ACCOMMODATION WHILE UNDERGOING
EXTENDED THERAPIES



STAGE 8
ILLAWARRA INTERNATIONAL
AGED & DISABILITY CENTRE
WITH 280 BEDS
(MAINLY HIGH CARE)
&
ACCOMMODATION FOR SENIORS

No.	Description	Date



IMAGESCAPE DESIGN STUDIOS
ABN 10 652 430 022
62/32 THE FORBES BUILDING
22-30 MOUNTAIN STREET
01/180 NSW 2007
P: 61 2 9216 1800
F: 61 2 9216 1800

Illawarra International Health Precinct
Cnr Huntley and Avondale Rd's
Huntley
LA VIE DEVELOPMENTS PTY LTD

Staging Plan

Project number	LaVie04	SK03PL
Date	16.07.2008	
Drawn by	VL	Scale
Checked by	CK	not to scale

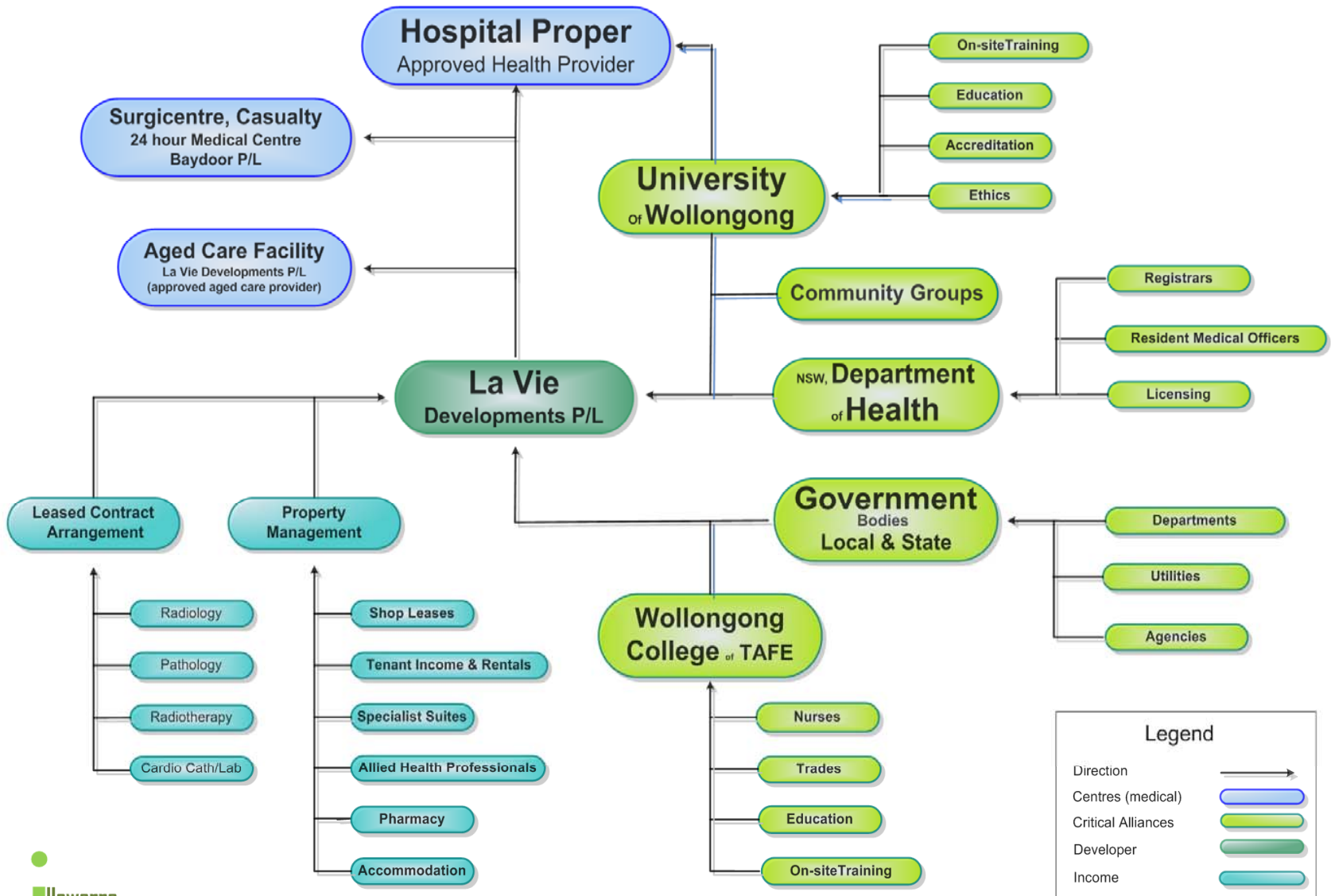
Plot stamp
16.07.2008
ISSUE 8

The Flow Chart that follows this note shows the critical alliances, collaboration and integration of numerous entities that are all very necessary in making this project function. At its conclusion it will represent the very community it serves, having effectively brought all entities together.

Much time and effort has been put into consultation and dialogue with these stakeholders, over 400 people, Community Groups, Associations and Government Departments including State and Local Politician's have been addressed and presented with this proposal.

As an ongoing commitment to have all parties briefed La Vie has engaged IRDG to maintain this dialogue and advise and consult all relative parties and stakeholders, ensuring the success of the project.

Critical Alliances & Collaboration





Initial Stages

Left to right; Obstetric Unit, Surgicentre, Radiology & Pathology,
Casualty/Medical Centre, including Pharmacy & Ambulance