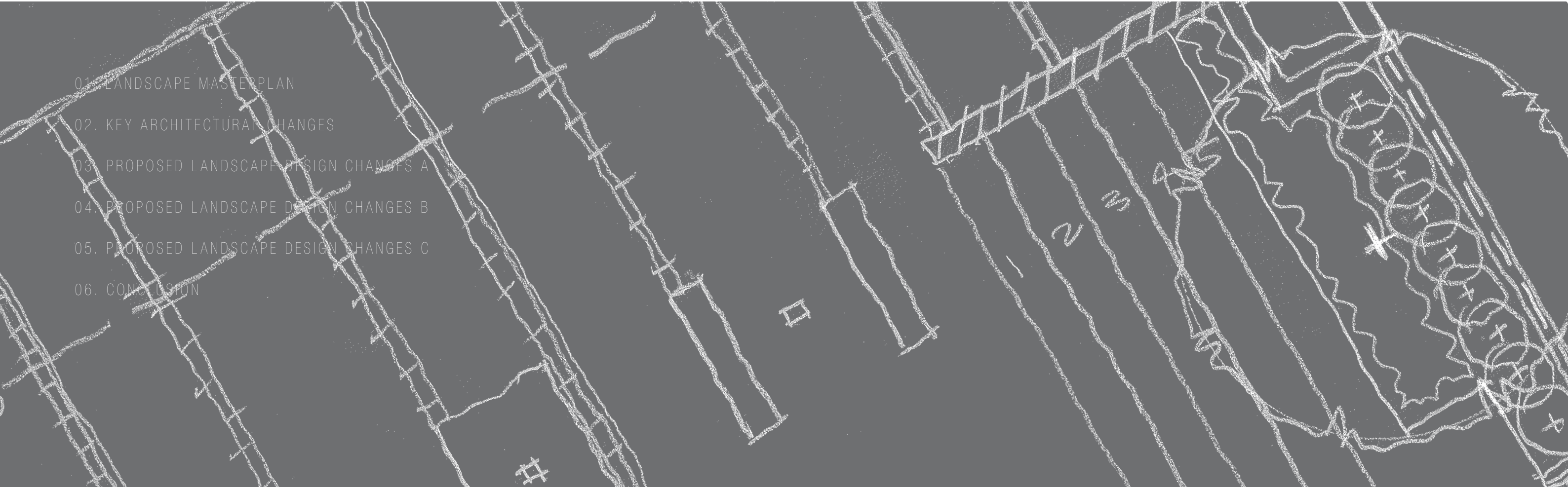


Appendix D – Landscape Design changes

College Of Fine Arts UNSW

Landscape Design Changes
February 2011
Site Image Landscape Architects



- 01. LANDSCAPE MASTERPLAN
- 02. KEY ARCHITECTURAL CHANGES
- 03. PROPOSED LANDSCAPE DESIGN CHANGES A
- 04. PROPOSED LANDSCAPE DESIGN CHANGES B
- 05. PROPOSED LANDSCAPE DESIGN CHANGES C
- 06. CONCLUSION

INTRODUCTION:

Site Image Landscape Architects has been commissioned to complete Design Development drawings for the landscape, working closely with Architectus and the project team to respect the previous approvals, heritage considerations, and functional requirements.

The following pages illustrate and discuss landscape changes, and provide discussion of key issues. We understand this material is to be read in conjunction with associated Section 75W documents prepared by the project team.

Site Image acknowledges the design and documentation of the project to this time has been completed by EDAW / AECOM.

PROPOSED LANDSCAPE DESIGN CHANGES OVERVIEW:

The following page sets out the key Architectural / building layout Section 75W amendments that affect the landscape design.

The pages following provide enlarged sketch plans for affected landscape areas, and highlight changes from the previously approved landscape documents.

A design discussion is provided for each affected area, noting the key issues, changes proposed, and assessment of suitability in terms of general consistency with the Approval.

It is noted that there is a normal process of design development consultation to occur with City of Sydney regarding the streetscape and open space to the north and west of the site.



I. Landscape Masterplan

PROPOSED LANDSCAPE CHANGES / SUMMARY OF RELATED ARCHITECTURAL CHANGES

ARCHITECTURAL CHANGES:

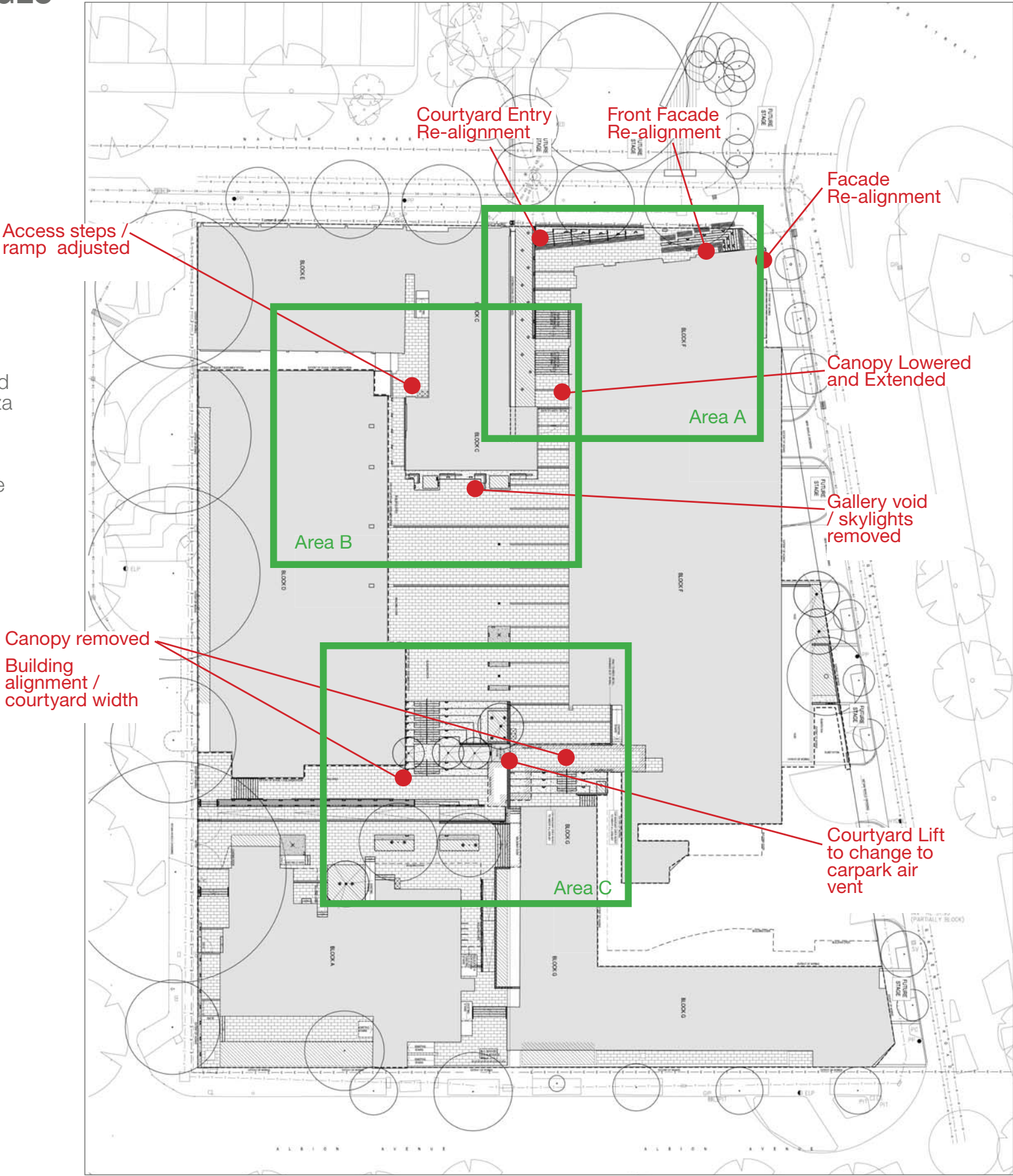
The adjacent EDAW / AECOM plan is annotated with landscape related architectural / building changes as proposed in the Architectus related Section 75W documentation.

LANDSCAPE CHANGES:

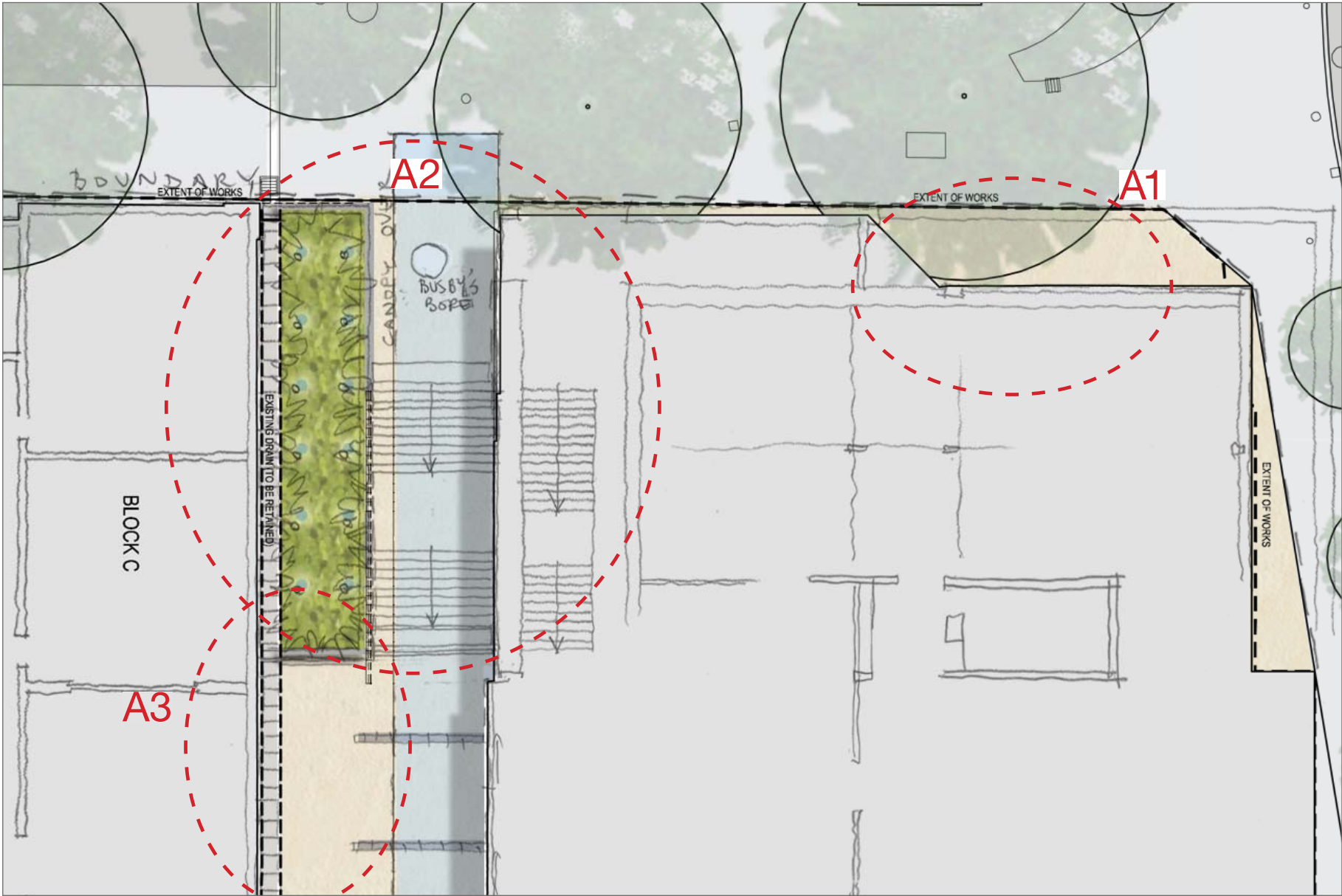
The boxed areas noted A, B & C adjacent highlight the detailed areas illustrated in the following pages.

We note that there has been a seperate application relating to the adjusted position of Building D, with a narrow landscaped strip adjacent to the plaza open space to the West.

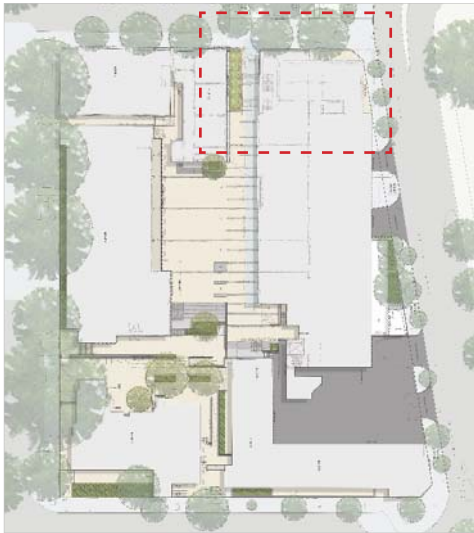
As noted above, consultation is to occur with City of Sydney regarding the streetscapes and open space to the north and west of the site. as part of the normal process of design development. For this reason, some minor landscape adjustments to these interfaces are not considered suitable to include in this Section 75W summary of proposed design changes.



II. Previous Landscape Plan (EDAW / AECOM), indicating changes locations



III. Proposed landscape design changes, indicating areas A1, A2, A3



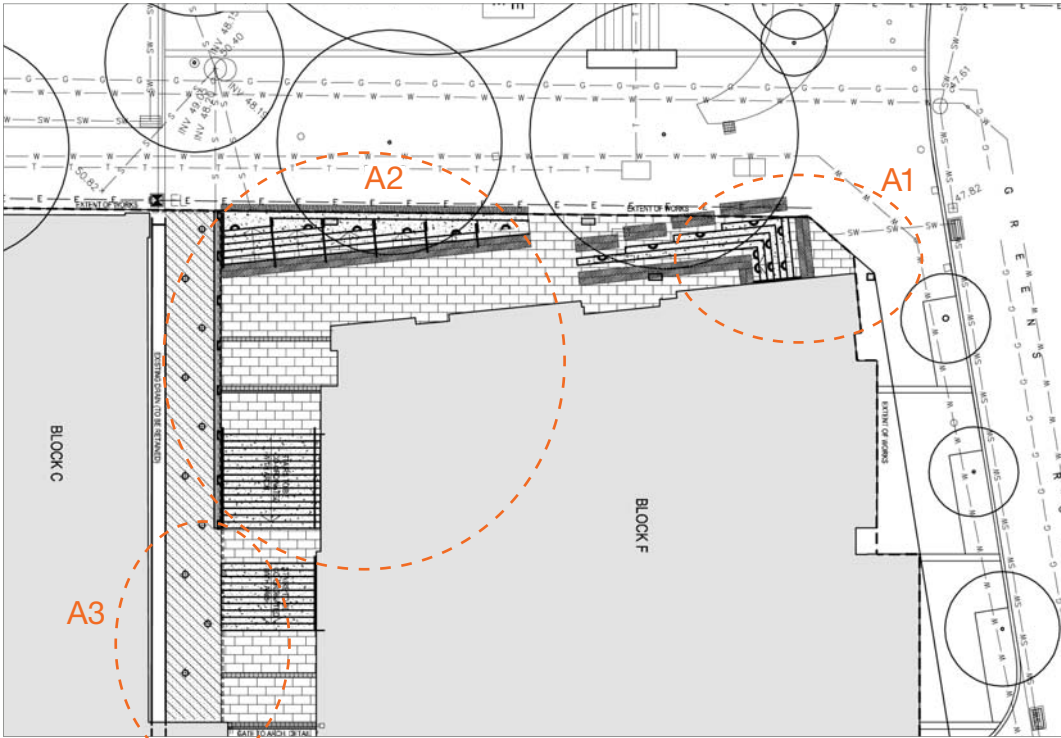
Key Plan

GENERAL:

Redesign of the main facade addressing Greens Road / Oxford Street changed the access requirements. The angled steps were changed to match the new facade alignment. New stair arrangement eliminates the 'down and then up' level changes when entering from the street. This assists the general drainage strategy for open space with emergency overland water flow able to flow through this area.

The Galley entry and arrangement adjustments relate more strongly to the streetscape.

The landscape adjacent the main stair is retained, along with the heritage drain, and Busby's Bore access manhole.



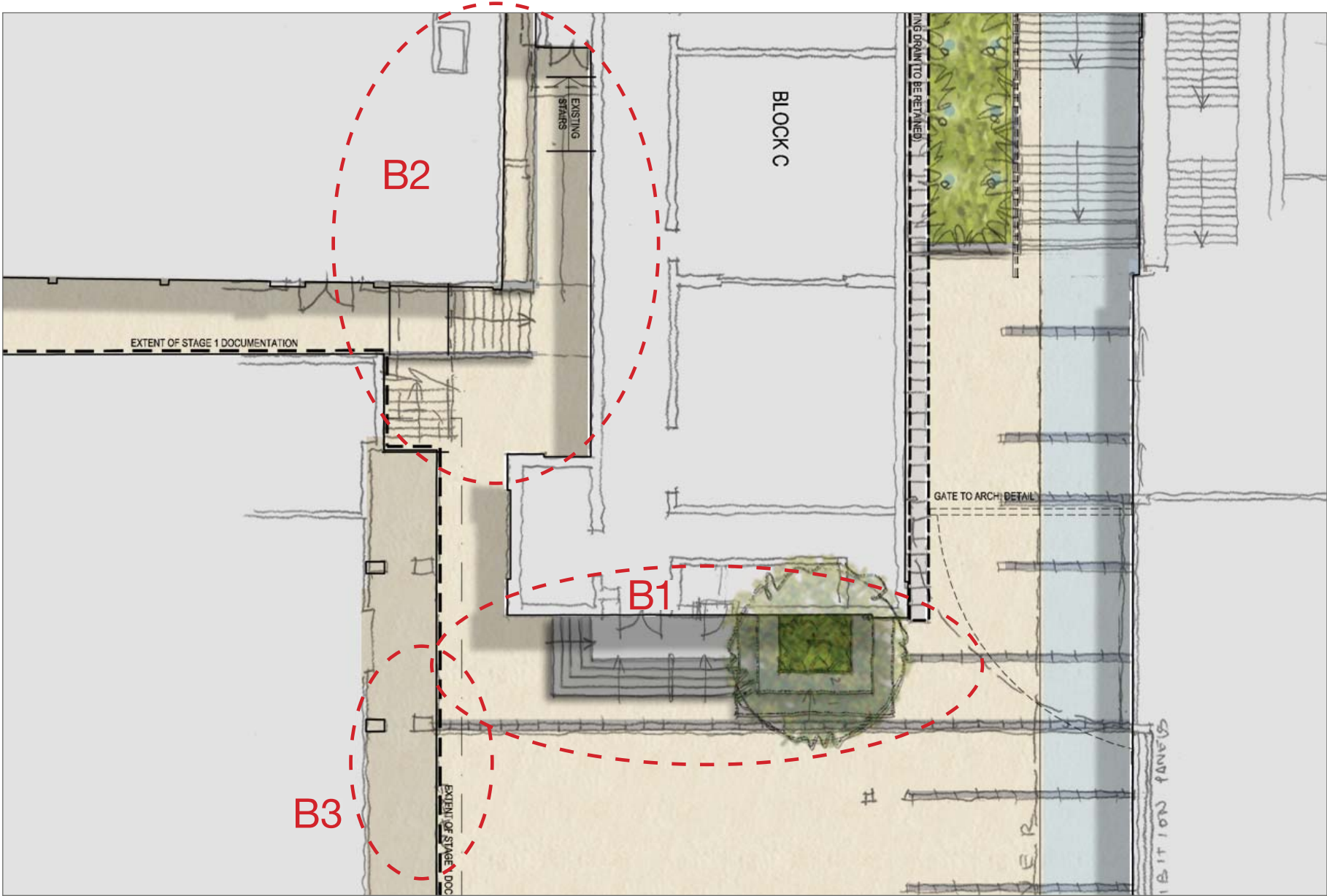
IV. Previous Landscape plan (EDAW / AECOM) for comparison

AREA A1:
The new design has a simple relationship to the street.

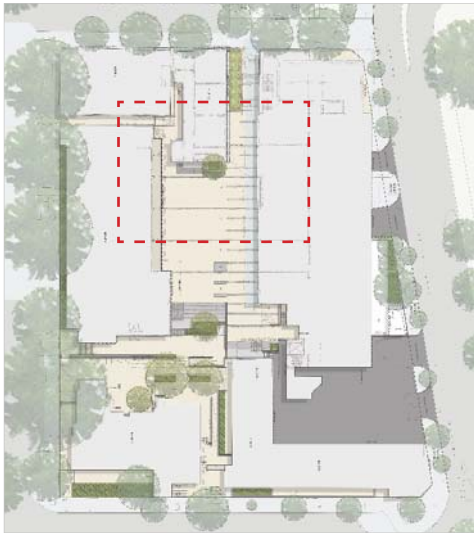
AREA A2:
The stairway and boundary interface has changed in order to reinforce this as a major site entry and address. The 'down and then up' nature of previous stair arrangement has been simplified to be 2 flights of stairs up to the main courtyard. The external stairs strongly relate to adjacent internal gallery stairs, increasing the visual scale of the level change. The 'Heritage' drain adjacent to Block C is retained in planter, and will have Bamboo (uplit) to create vertical landscape to compliment the entry stairway. Keeping the levels of the drain, the planter is at a lower level, creating an alcove space that will maintain general visual access to the foundation wall to Block C, noted as having heritage qualities. Rounded 'river rock' in the planter will provide a feature ground plane treatment.

AREA A3:
For the area above the stair , the 'Heritage drain' is to be salvaged and reinstated into the paving at the upper level, generally in the same plan location. If the units prove to be unsuitable, then a suitable 'marker' pavement will be selected to indicate the previous alignment / continuation of the drain. A handrail at this location is of course provided to provide safety against the level change to the lower level planter.

The pavement banding arrangement continues from the main courtyard space to the South into landing area above the stair, but with a reduced width so that the banding does not interface directly with the Heritage Drain.

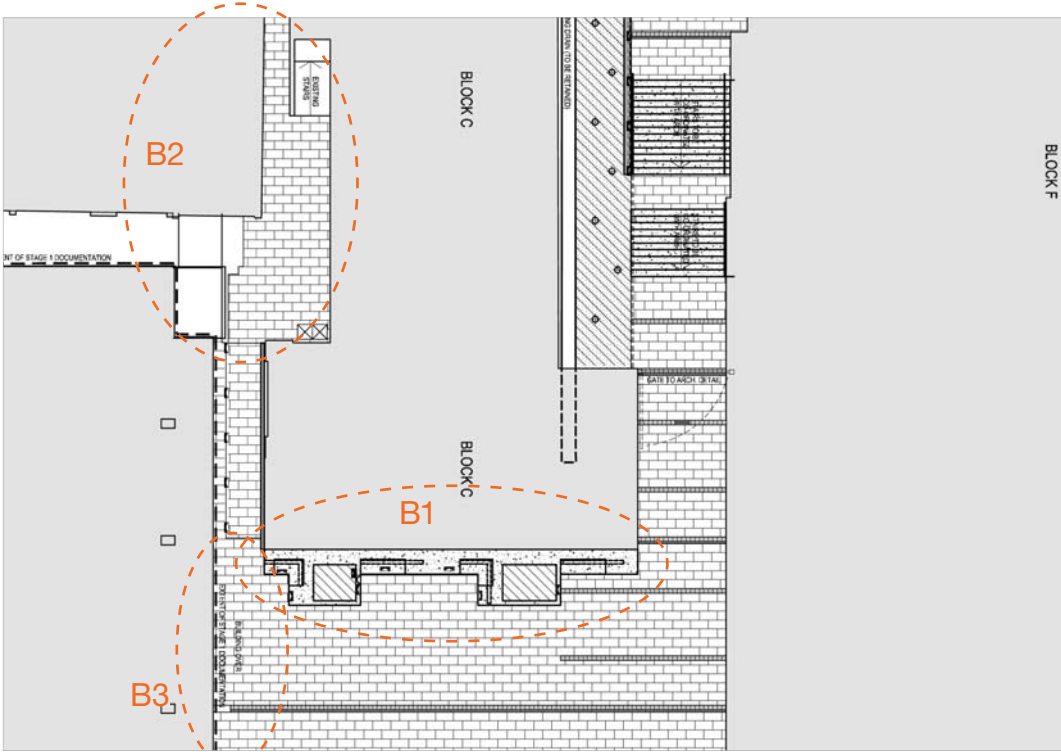


V. Proposed landscape design changes, indicating areas B1, B2, B3



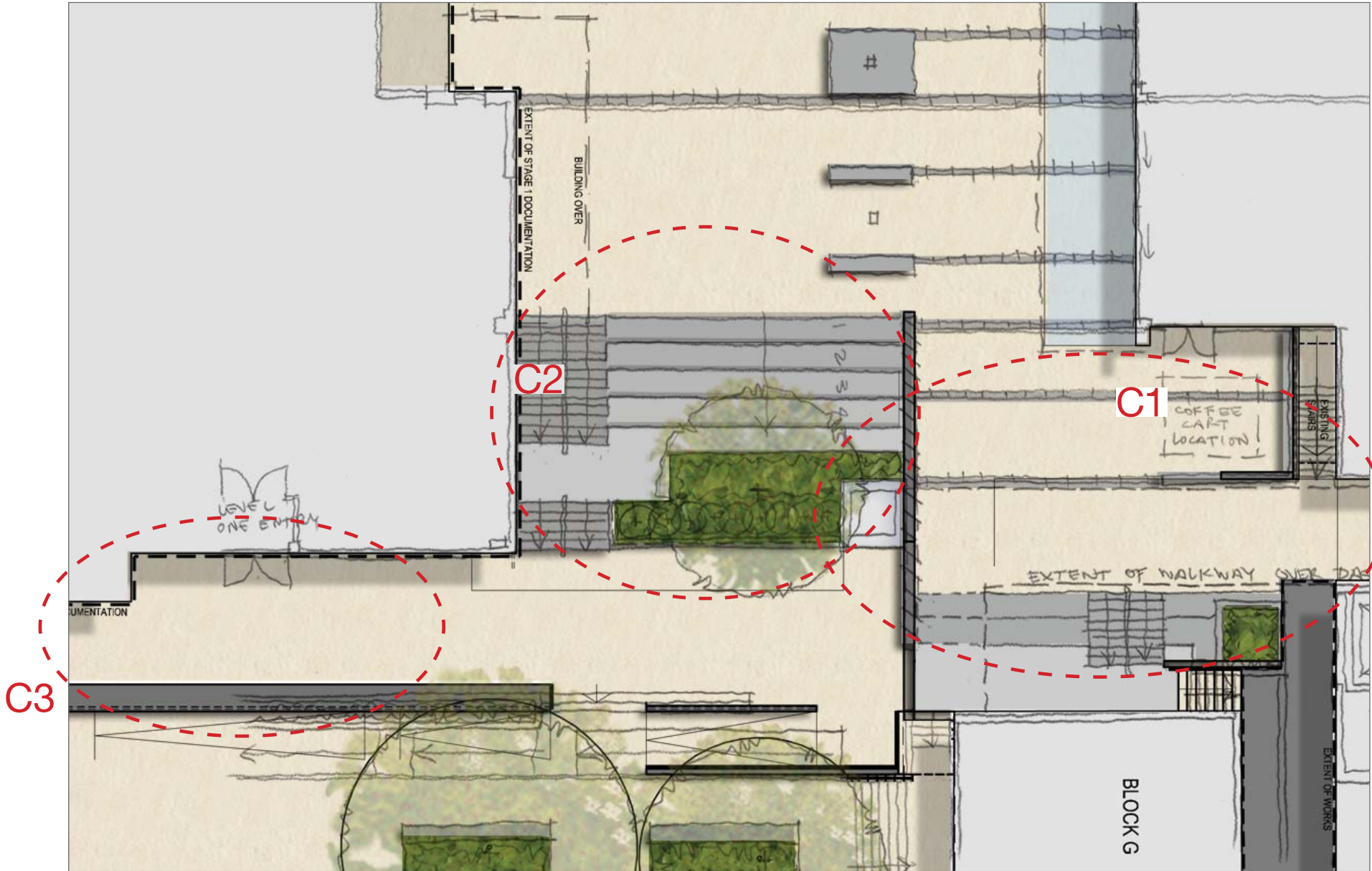
Key Plan

GENERAL:
Block C has been reduced in length, and the access stair / ramps, and link to the 'breezeway' extending to the west are all adjusted to suit. The Skylights to the end of Building C have been removed from the design.

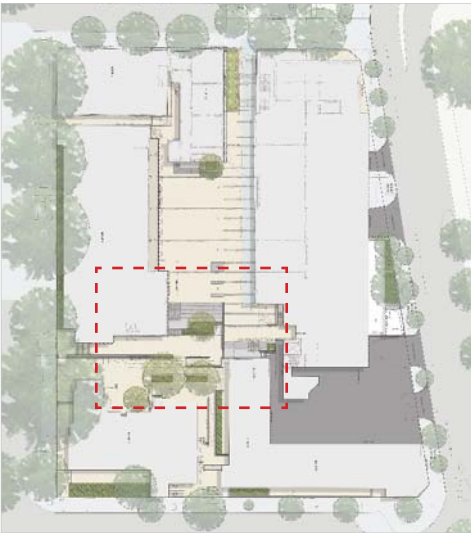


VI. Previous Landscape plan (By EDAW / AECOM) for comparison

- AREA B1:**
Increased pavement to this area.
- New concrete Bleachers/benches (2 levels) with feature Tree in planter at upper bench level and also new stairs to the entrance to Block C adjacent to the Bleacher/benches and Tree planter.
- AREA B2:**
Adjusted stairs and ramp.
- AREA B3:**
Building alignment results in narrowing of the central plaza pavement. This is offset by the increase of the plaza area towards Building C.



VII. Proposed landscape design changes, indicating areas C1, C2, C3



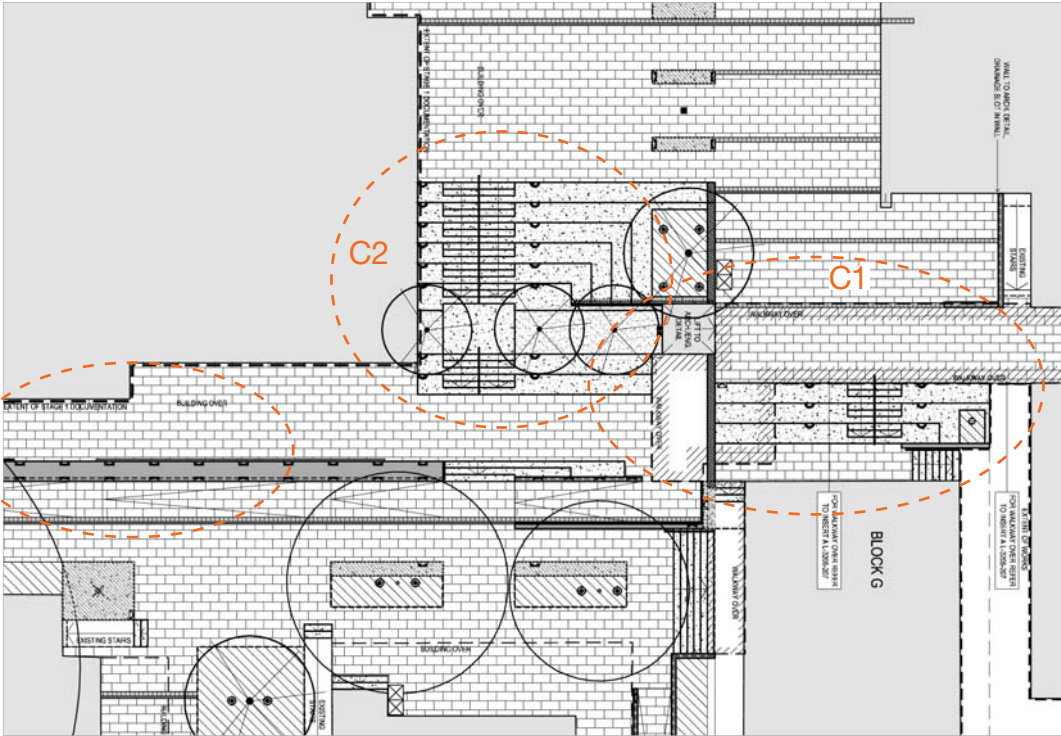
Key Plan

GENERAL:

A range of changes have each had minor impact on the area, but together these result in a need for adjust to the seating benches / stairway design / alignment.

The Architectural changes include:

- elevator becomes a air vent to the carpark;
- the Level 1 bridge walkway adjusts to not not connect to the eliminated 'Lift';
- Building D has moved East and impacts on the stair / benches area



VIII. Previous Landscape plan (EDAW / AECOM) for comparison

AREA C1:

Minor adjustment required only to benches and steps to suit final design development of layout, levels and drainage.

AREA C2:

New arrangement has general changes, but all retain the principal design function and general layout of the area.

Changes include:

- stairs moved to adjoin Building D (benches became too narrow);
- tree planter moved to avoid conflict with reinstated heritage wall
- benched seating no longer includes angled return towards the south, as a result of the narrowed general dimension being insufficient;
- the bench seating detailing will require refinement so that the adjoining heritage wall is retained as an independent element, with suitable contrasting expression of the end of the Bleachers above.

AREA C3:

Overhead canopy removed as part of Architectural changes - affects the general amenity of the ramps / walkway link.

CONCLUSION:

Site Image has worked closely with Architectus, Hindmarsh, and the project team in reviewing the design adjustments proposed as part of the current Section 75W application. With the Landscape Design adjustment as proposed in this report, we confirm that we believe the design outcome will be generally consistent with the previous approval, and that impacts from the changes are minimal.

As noted above, consultation is to occur with City of Sydney regarding the streetscapes and open space to the north and west of the site. as part of the normal process of design development. For this reason, some minor landscape adjustments to these interfaces are not considered suitable to include in this Section 75W summary of proposed design changes.

Design Development of all areas will continue to refine the detailing of all areas as part of normal finalisation towards tender and construction documentation.



IX. Landscape Masterplan

