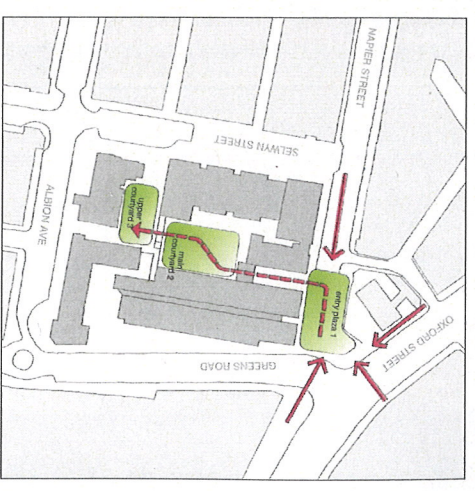
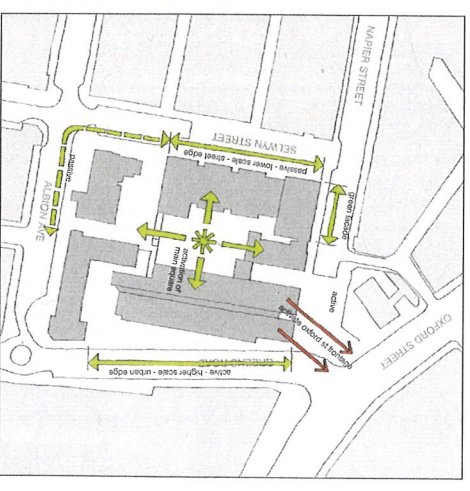


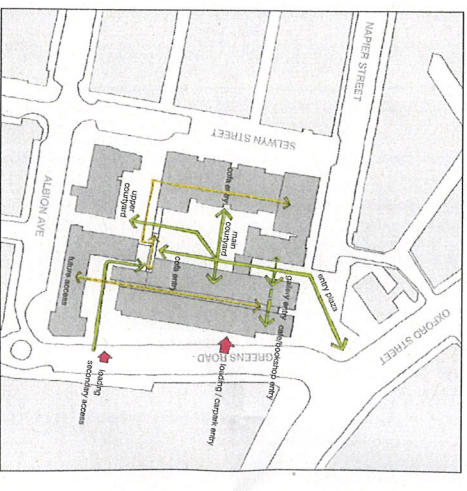
Plan showing stepped ground plane and adjacent uses



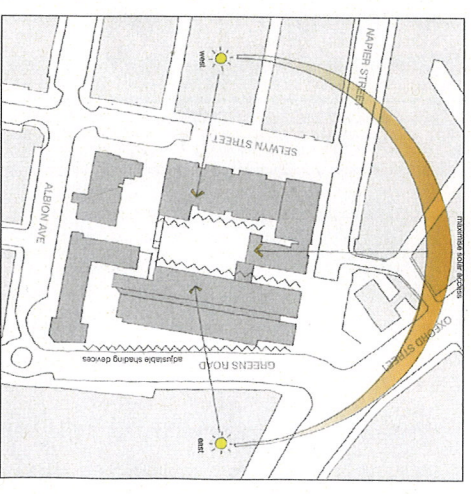
Plan showing open space sequence



Plan showing active and passive street edges and central courtyard as campus heart

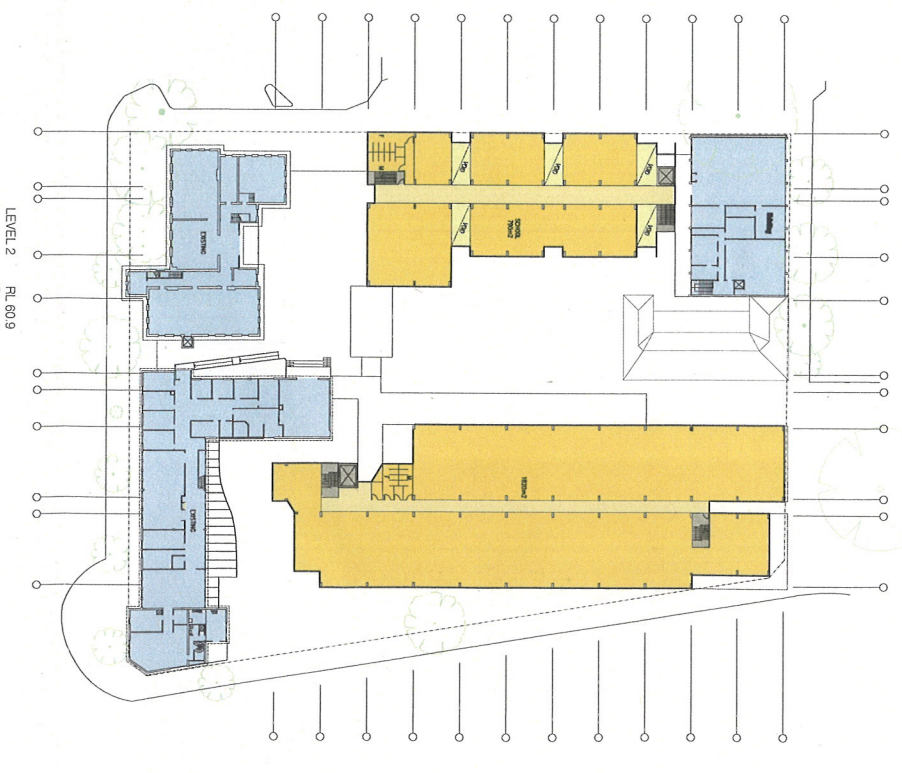
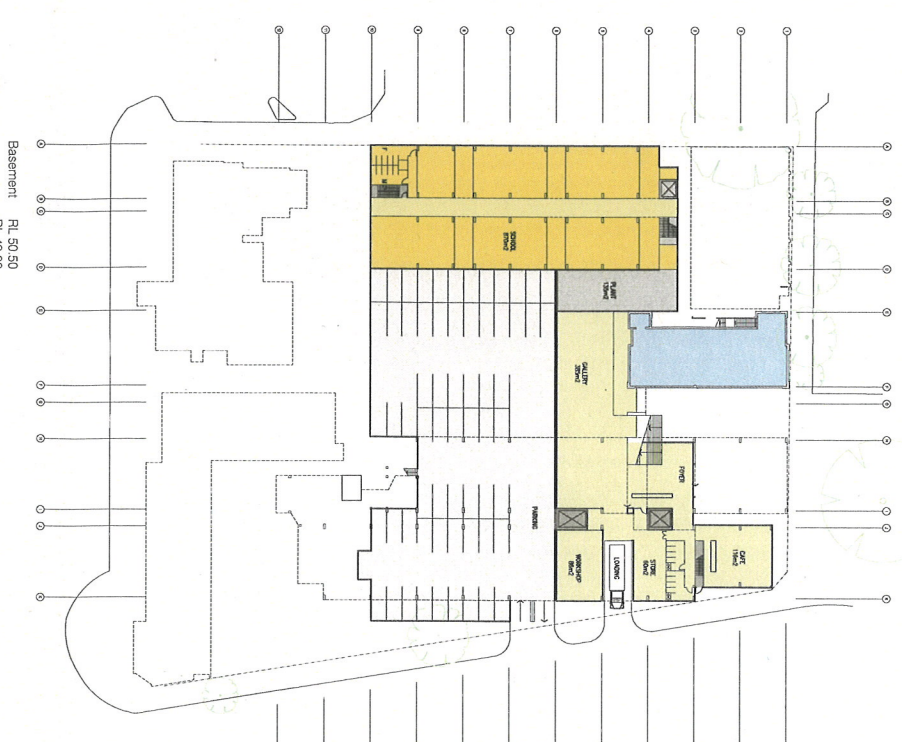
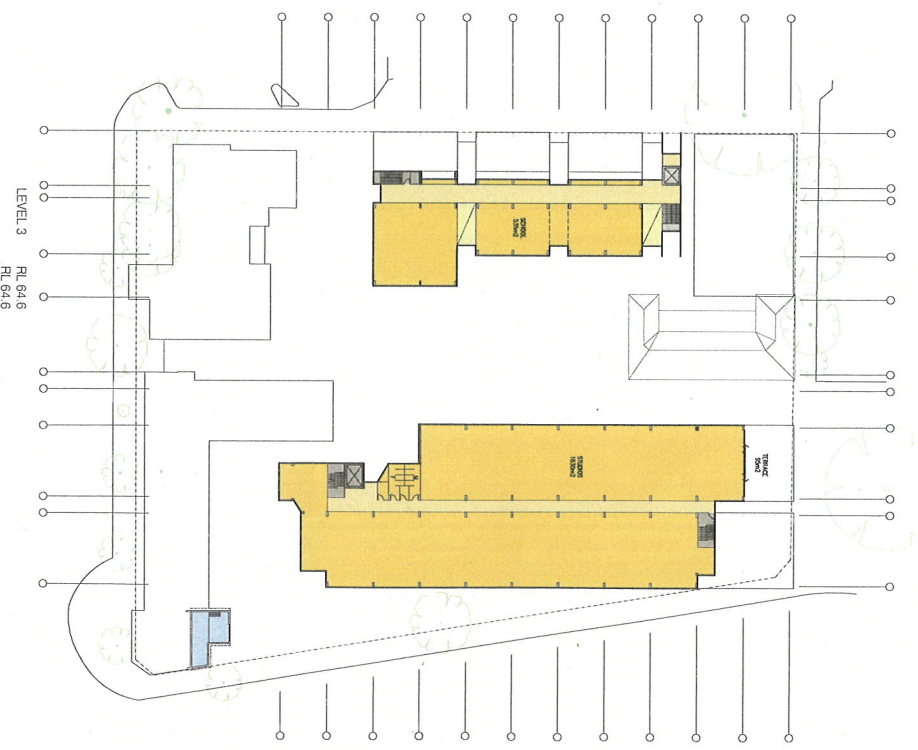
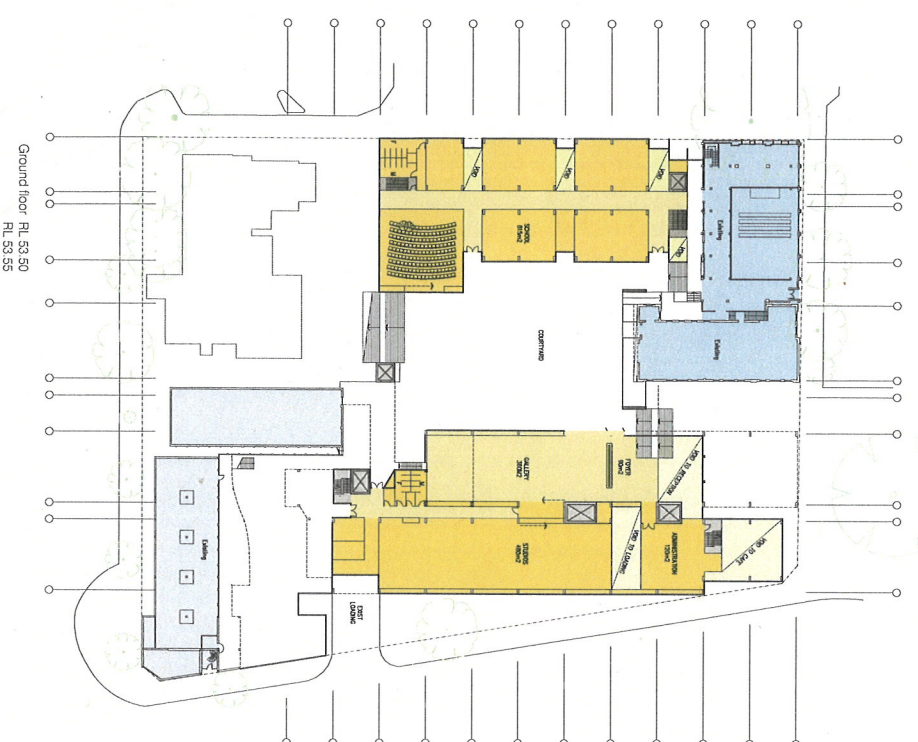
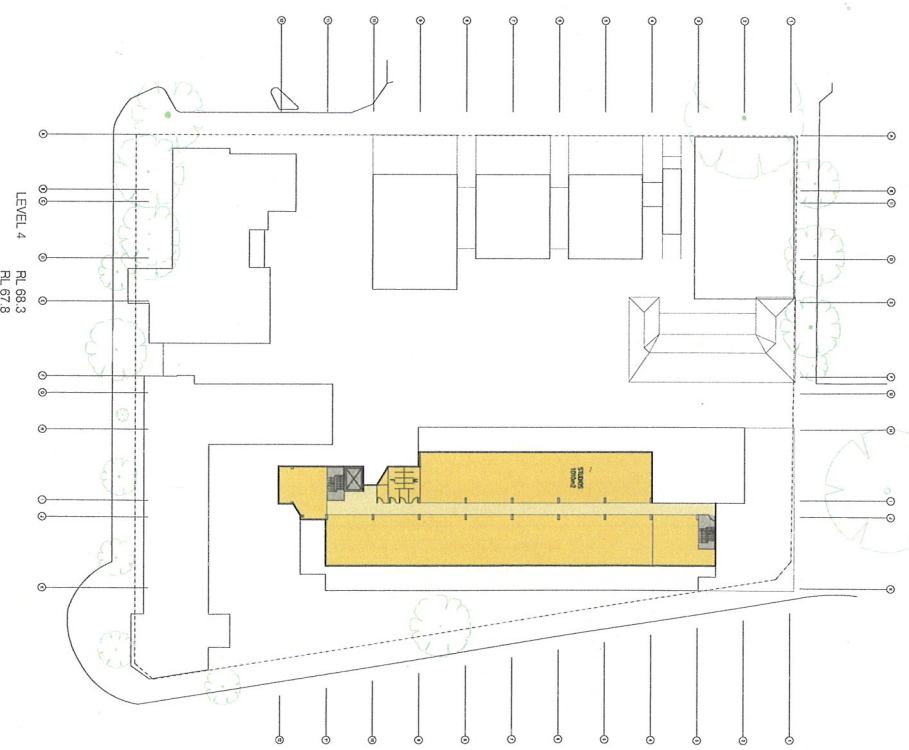
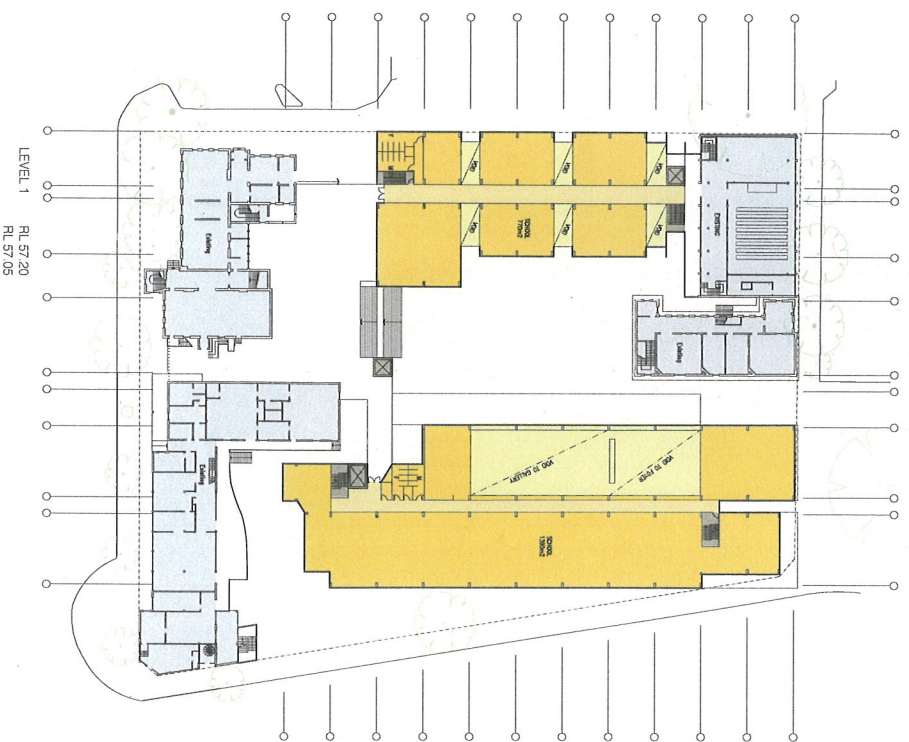


Clarity of external and internal circulation



solar access and sunshading requirements

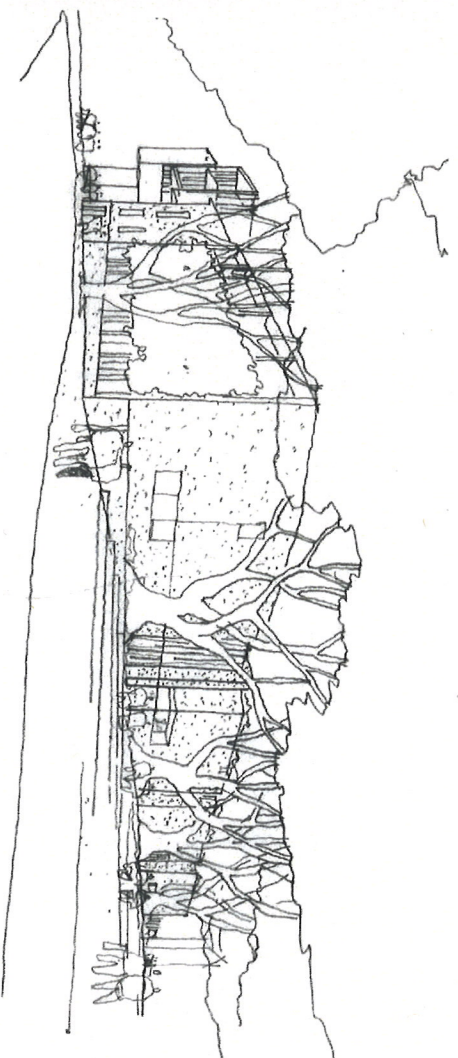




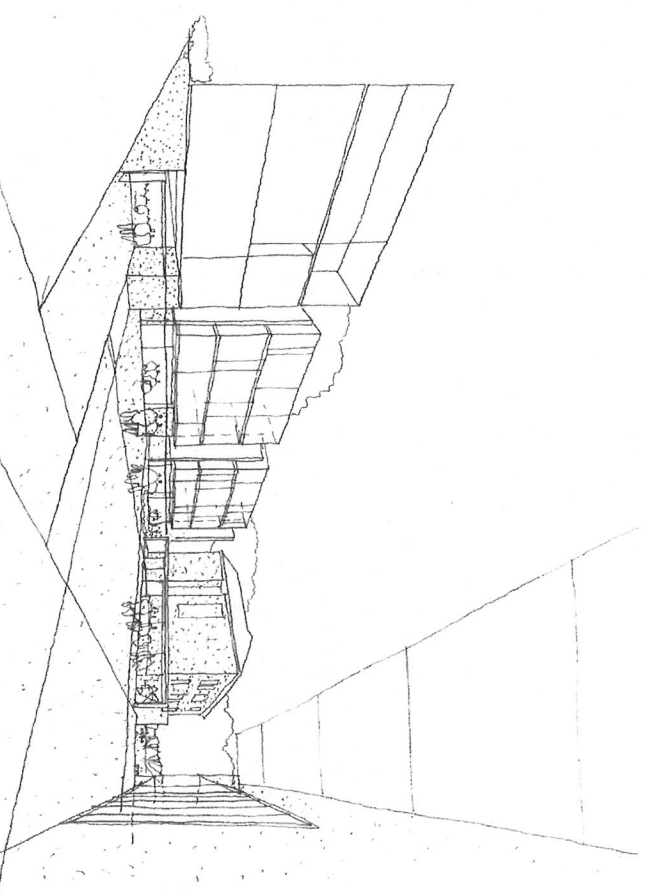




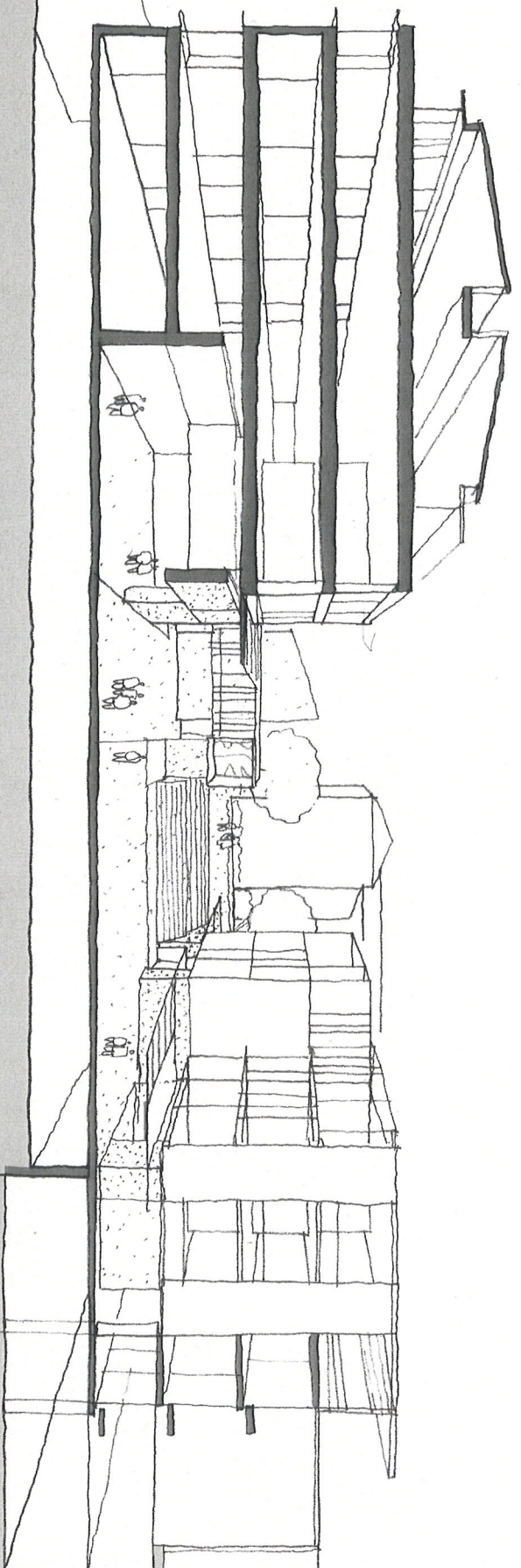
View from entry courtyard to cafe, bookshop, Gallery and campus beyond



View from corner of Napier and Selwyn Streets



View of central courtyard / campus heart



East west section through central courtyard looking south to upper courtyard and library





View from Oxford street to Gallery and COFA entry showing cafe, bookshop and art store (trees removed for clarity)