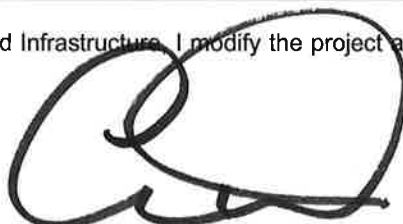


Notice of Modification

Section 75W of the *Environmental Planning and Assessment Act 1979*

As delegate of the Minister for Planning and Infrastructure, I modify the project approval referred to in Schedule 1, as set out in Schedule 2.



Chris Wilson
Executive Director
Major Projects Assessments

Sydney **19 March** 2012

SCHEDULE 1

Project approval 08_0101 and 08_0102 granted by the Minister for Planning on 26 November 2010 for the Integra Underground Project and Integra Open Cut Project.

SCHEDULE 2

1. In the table of "Definitions", insert the words "and Infrastructure" after the word "Planning" in the definitions for "Department" and "Minister".
2. In the "Definitions" table, delete reference to and definitions for "DECCW", "I&I NSW" and "RTA" and insert the following terms and definitions in the table in alphabetical order:

DRE	Division of Resources and Energy within the Department of Trade and Investment, Regional Infrastructure and Services
EA (Mod 1)	<i>Integra Mine Complex Modification 1 Environmental Assessment</i> , prepared by EMGA Mitchell McLennan, dated 2 December 2011
OEH	Office of Environment and Heritage
RMS	Roads and Maritime Services

3. Delete all references to "DECCW" and replace with "OEH".
4. Delete all references to "I&I NSW" and replace with "DRE".
5. Delete all references to "RTA" and replace with "RMS".
6. In condition 2 of schedule 2, delete all words after "commitments" and insert the following:
 - (d) EA Mod 1; and
 - (e) conditions of this approval.

7. In schedule 3, condition 1, insert the following into Table 1 in numerical order:

11 – F Ferraro	-	-
----------------	---	---

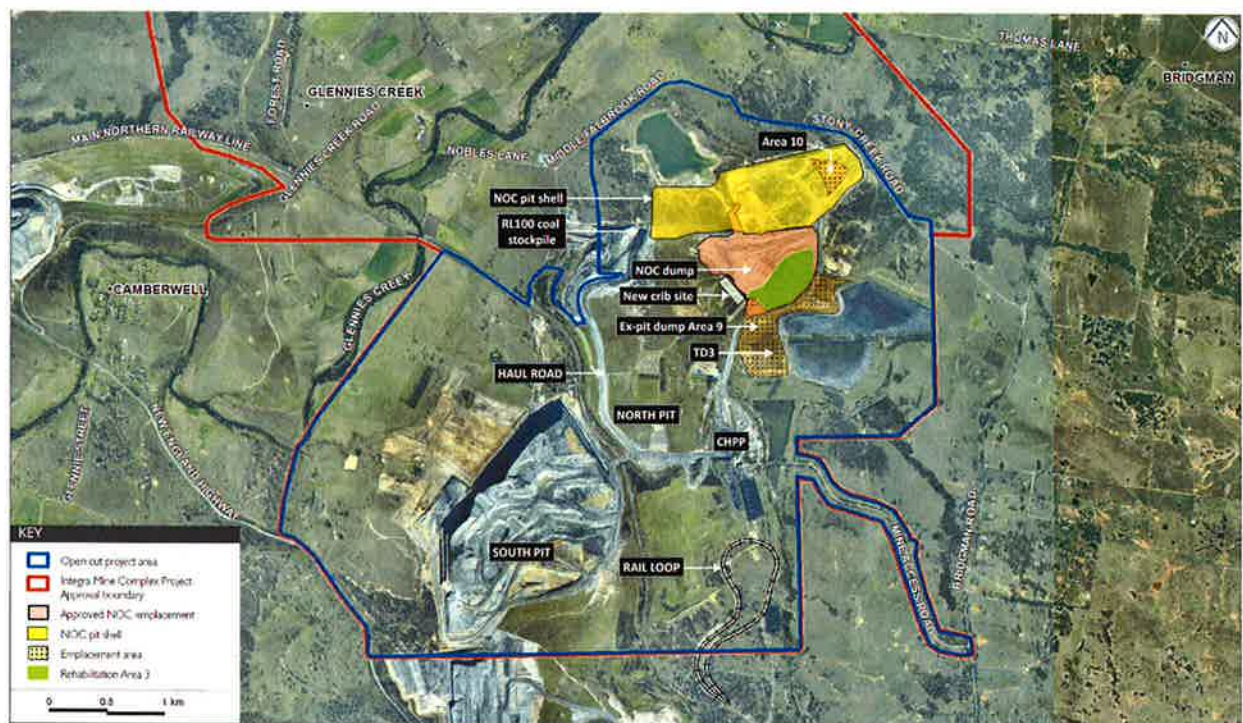
8. In schedule 3, condition 6, delete "11 – F Ferraro" from Table 6 and insert the following in numerical order:

20 – Mr Garvie	31 – Ms Craven
32 – M Langdon	48 – Mr & Mrs Cheetham

9. Delete condition 9 of schedule 3 and replace with the following:
 9. The Proponent shall:
 - (a) implement best practice noise management, including all reasonable and feasible noise mitigation measures to minimise the operational, low frequency, and rail noise generated by the projects;

- (b) regularly assess the real-time noise monitoring and meteorological forecasting data and relocate, modify, and/or stop operations on site to ensure compliance with the relevant conditions of this approval;
 - (c) maintain or improve the effectiveness of noise suppression equipment on plant at all times and ensure defective plant is not used operationally until fully repaired;
 - (d) ensure that noise attenuated plant is deployed preferentially in locations relevant to sensitive receivers;
 - (e) minimise the noise impacts of the Integra mine complex during meteorological conditions when the noise limits in this approval do not apply; and
 - (f) co-ordinate the noise management on site with the noise management at nearby mines (including the Ashton, Rix's Creek and Mt Owen mines) to minimise the cumulative noise impacts of these mines and the Integra mine complex to the satisfaction of the Director-General.
10. Delete condition 10 in schedule 3 and replace with the following:
10. The Proponent shall prepare and implement a Noise Management Plan for the projects to the satisfaction of the Director-General. This plan must:
- (a) be prepared in consultation with OEH, and submitted to the Director-General for approval by the end of May 2012;
 - (b) describe the measures that would be implemented to ensure:
 - best management practice is being employed;
 - the noise impacts of the Integra mine complex are minimised during meteorological conditions when the noise limits in this approval do not apply; and
 - compliance with the relevant conditions of this approval;
 - (c) describe the proposed management system in detail;
 - (d) include a monitoring program that:
 - uses a combination of real-time and supplementary attended monitoring measures to evaluate the performance of the Integra mine complex;
 - adequately supports the proactive and reactive noise management system on site;
 - includes a protocol for determining exceedances of the relevant conditions in this approval;
 - evaluates and reports on the effectiveness of the noise management system on site;
 - provides for the annual validation of the noise model for the Integra mine complex; and
 - (e) include a protocol that has been prepared in consultation with the owners of nearby mines (including the Ashton, Rix's Creek and Mt Owen mines) to minimise the cumulative noise impacts of these mines and the Integra mine complex.
11. In schedule 3, condition 25, replace all words after "air pollution generated by the projects;" with the following:
- (c) operate a comprehensive air quality management system on site that uses a combination of predictive meteorological forecasting and real-time air quality monitoring data to guide the day to day planning of mining operations and the implementation of both proactive and reactive air quality mitigation measures to ensure compliance with the relevant conditions of this approval;
 - (d) minimise the air quality impacts of the Integra mine complex during adverse meteorological conditions and extraordinary events (see note d in conditions 22 and 23);
 - (e) minimise the surface disturbance of the site generated by the projects; and
 - (f) co-ordinate the air quality management on site with the air quality management of nearby mines (including Ashton, Rix's Creek and Mt Owen mines) to minimise the cumulative air quality impacts of these mines and the Integra mine complex, to the satisfaction of the Director-General.
12. Replace condition 16(b) in schedule 3 with the following:
- (b) co-ordinate the blasting on site with the blasting at nearby mines (including Ashton, Rix's Creek and Mt Owen mines) to minimise the cumulative blasting impacts of the mines;
13. Delete condition 26 in schedule 3 and replace with the following:
26. The Proponent shall prepare and implement a detailed Air Quality & Greenhouse Gas Management Plan for the Integra mine complex to the satisfaction of the Director-General. This plan must:
- (a) be prepared in consultation with OEH, and submitted to the Director-General for approval by the end of May 2012;
 - (b) describe the measures that would be implemented to ensure:
 - best management practice is being employed;
 - the air quality impacts of the Integra mine complex are minimised during adverse meteorological conditions and extraordinary events; and
 - compliance with the relevant conditions of this approval;
 - (c) describe the proposed air quality management system in detail;
 - (d) include a monitoring program that:

- uses a combination of real-time monitors and supplementary monitors to evaluate the performance of the Integra mine complex;
 - adequately supports the proactive and reactive air quality management system;
 - includes PM2.5 monitoring (although this obligation could be satisfied by the regional air quality monitoring network if sufficient justification is provided);
 - evaluates and reports on the effectiveness of the air quality management system;
 - includes a protocol for determining any exceedances of the relevant conditions of this approval; and
- (e) include a protocol that has been prepared in consultation with the owners of nearby mines (including the Ashton, Rix's Creek and Mt Owen mines) to minimise the cumulative air quality impacts of these mines and the Integra mine complex.
14. In schedule 3, condition 42, delete "June 2011" and replace with "September 2012".
15. In schedule 3, condition 43, delete "December 2011" and replace with "September 2012".
16. In schedule 3, insert new condition 44A immediately after condition 44 as follows:
- 44A The Proponent shall commission a suitably qualified, experienced and independent person approved by the Director-General to conduct an audit of all biodiversity offset areas referred to in conditions 41 and 42 above. The audit report is to be submitted to the Director-General by the end of July 2012 for approval and must:
- (a) report on current baseline data on flora and fauna within each biodiversity offset area, including the condition of all key vegetation communities;
 - (b) compare the current condition of each vegetation community within each biodiversity offset area to that surveyed in 2007, including a report on any works and/or other disturbance that has taken place since those surveys;
 - (c) evaluate the effectiveness of management measures undertaken to date in improving the biodiversity value of each biodiversity offset area; and
 - (d) recommend any additional improvement works for each biodiversity offset area and provide a schedule for their implementation.
17. In schedule 3, condition 48, delete "December 2011" and replace with "September 2012".
18. In Appendix 4 Project Layout Plans, insert a new figure immediately after the figure titled "Western Mining Area and Surface Infrastructure" as follows:



Modification 1 – Overburden Emplacement Area 9 and Crib Site Relocation