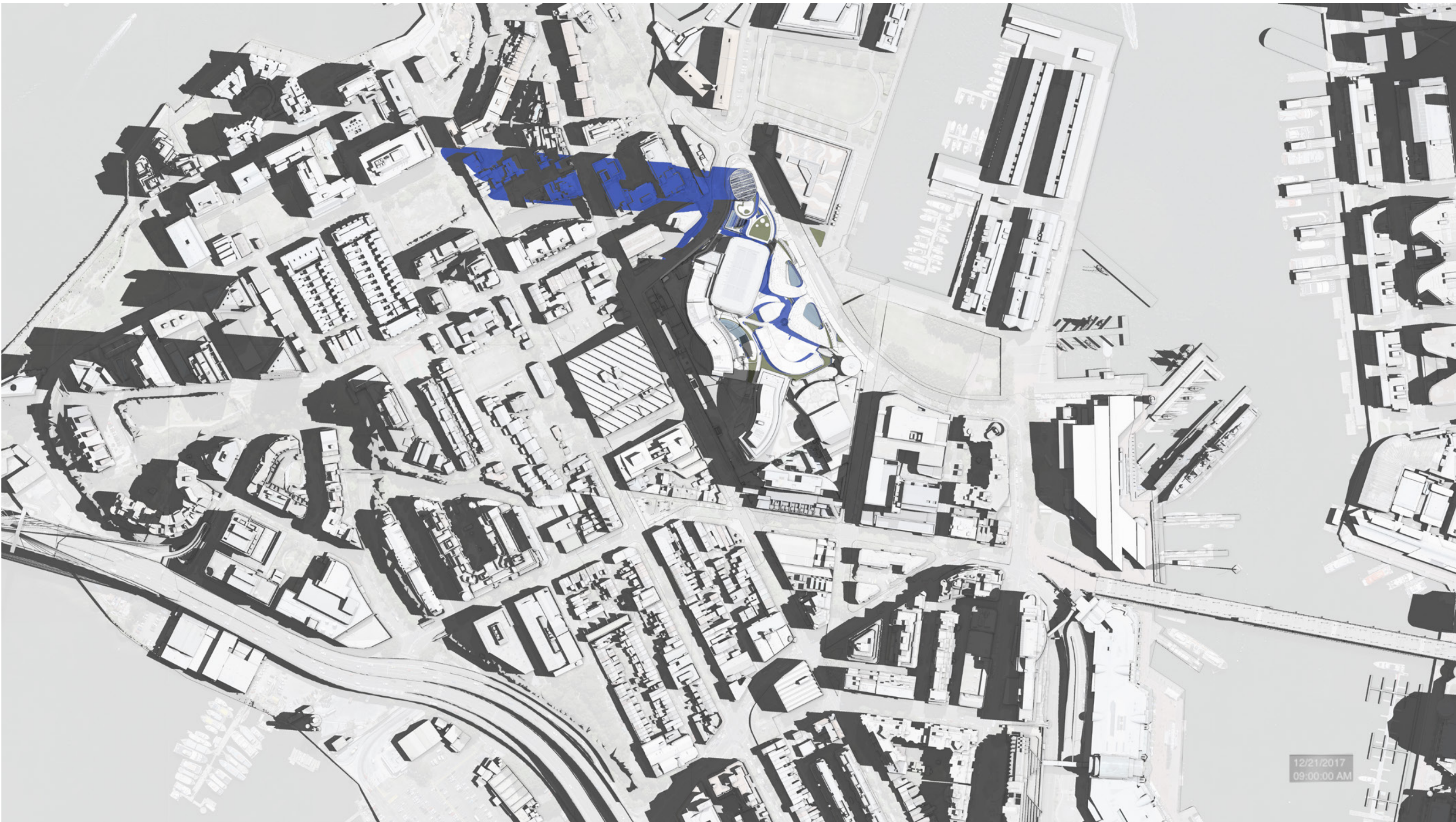




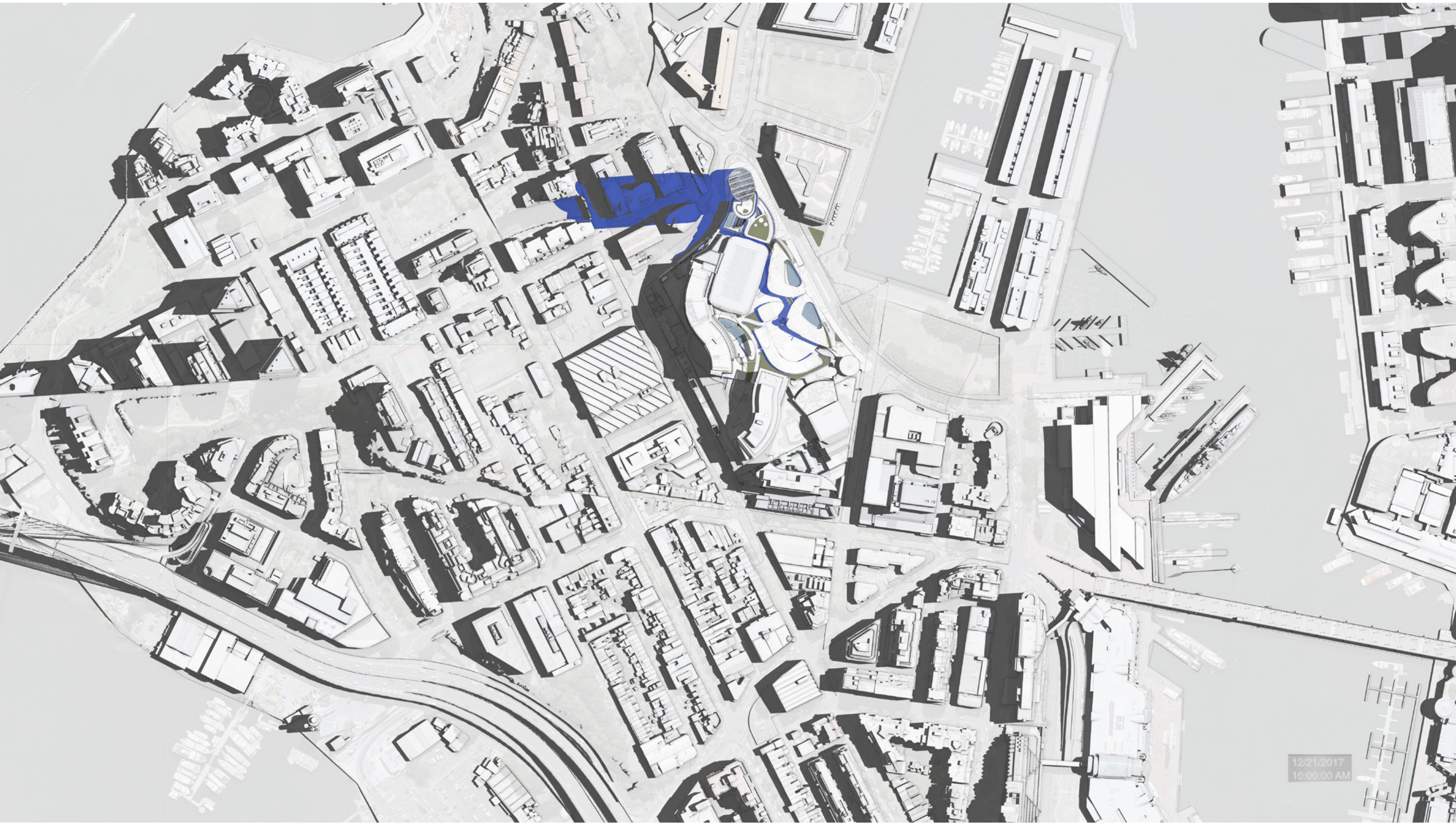
17.7 **Shadow Diagrams** - Summer Solstice

December 21 - 9am



12/21/2017
09:00:00 AM

December 21 - 10am



12/21/2017
10:00:00 AM

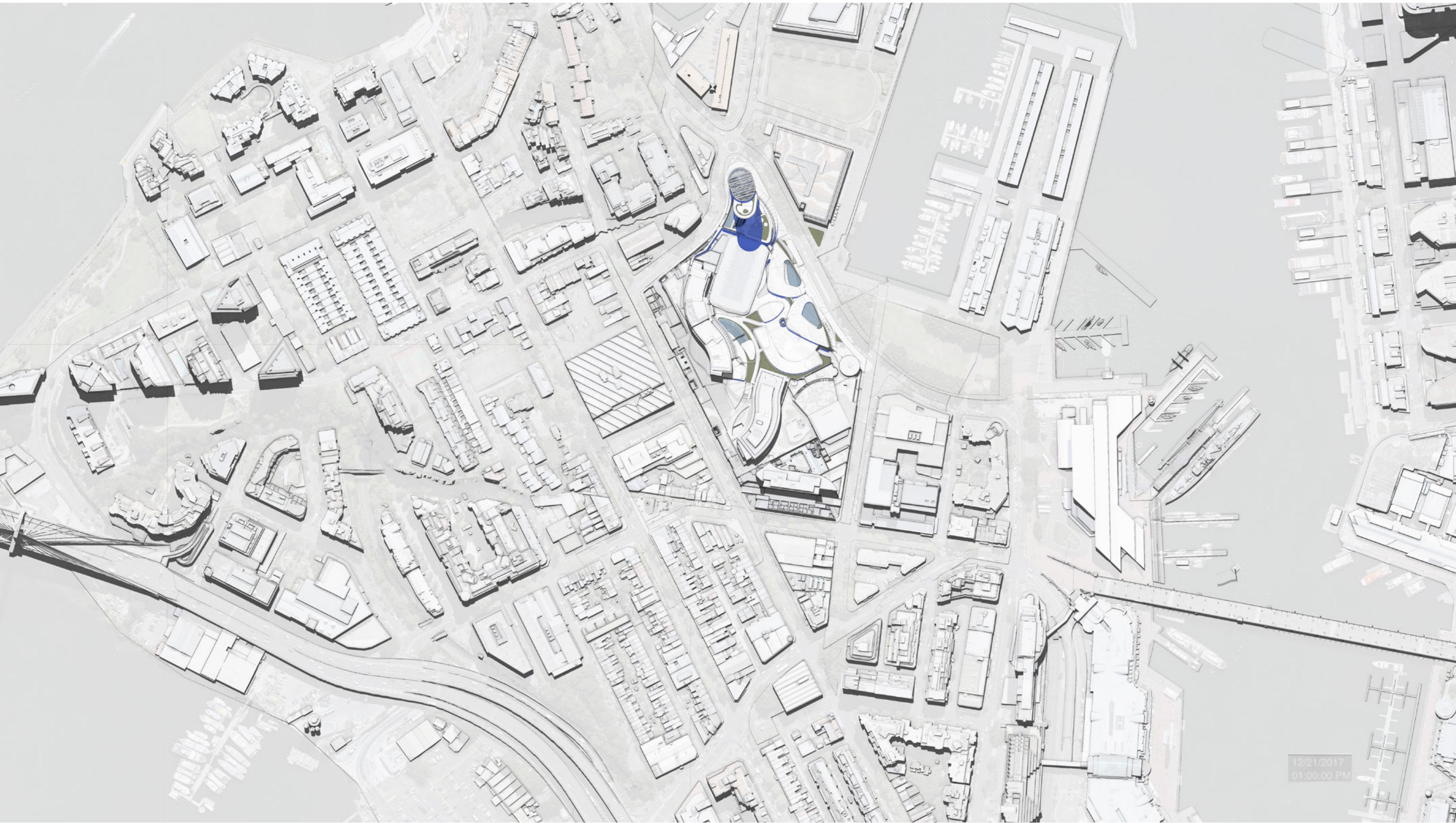
December 21 - 11am



12/21/2017
11:00:00 AM



12/21/2017
12:00:00 PM



12/21/2017
01:00:00 PM

December 21 - 2pm



12/21/2017
02:00:00 PM

December 21 - 3pm



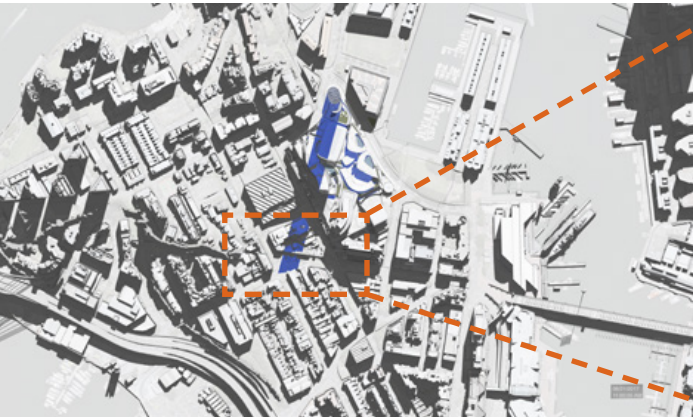
12/21/2017
03:00:00 PM

17.8 Shadow Diagrams - Union Square

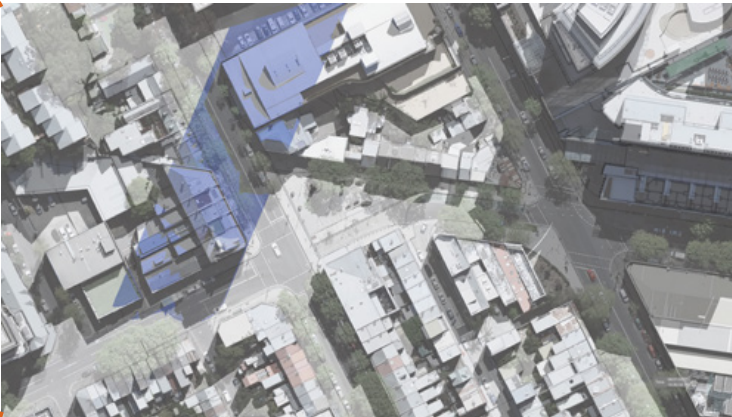
Union Square Shadow analysis

The shadow diagrams on this page show 15 minute intervals between 10.30am and noon on the 21st of June.

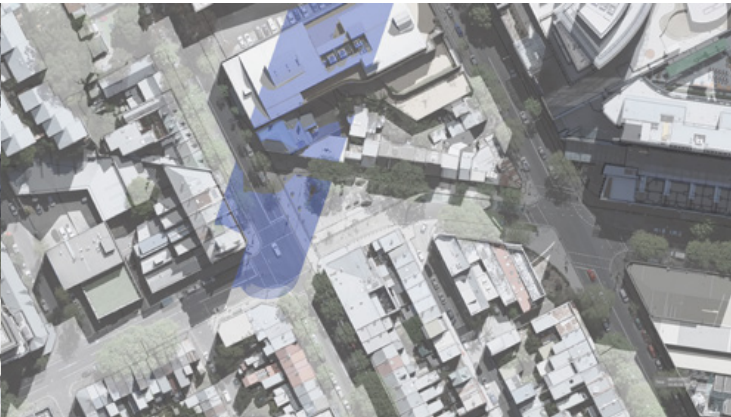
The greatest impact is recorded at 11.00am when the mid winter shadow covers the bulk of Union Square including the Pymont War Memorial. By 11.30am the shadow has moved from the main body of Union Square and falls upon Union Street to the east.



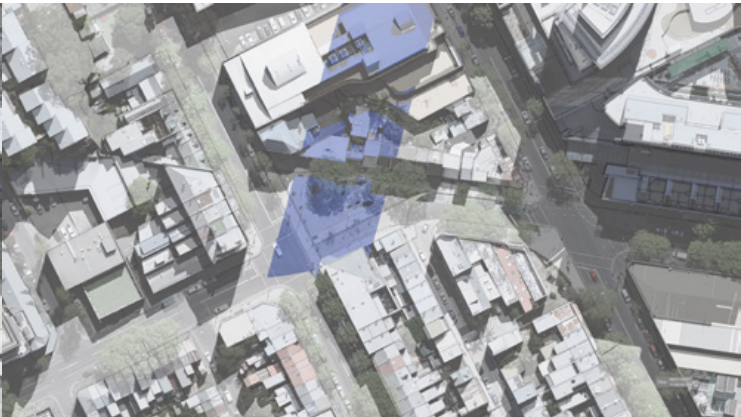
Pymont wide shadow diagram



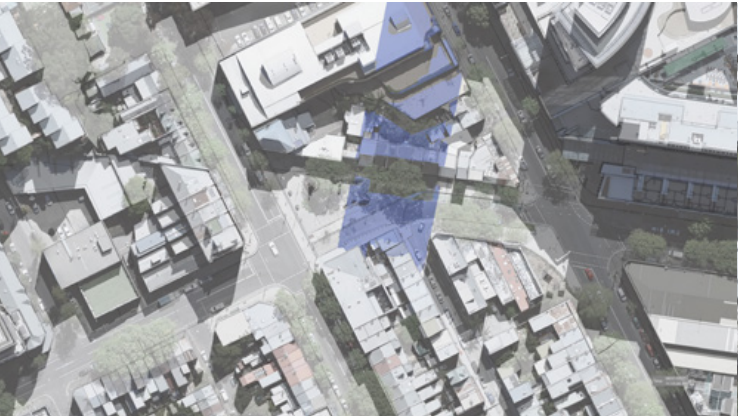
June 21 - 10.30am



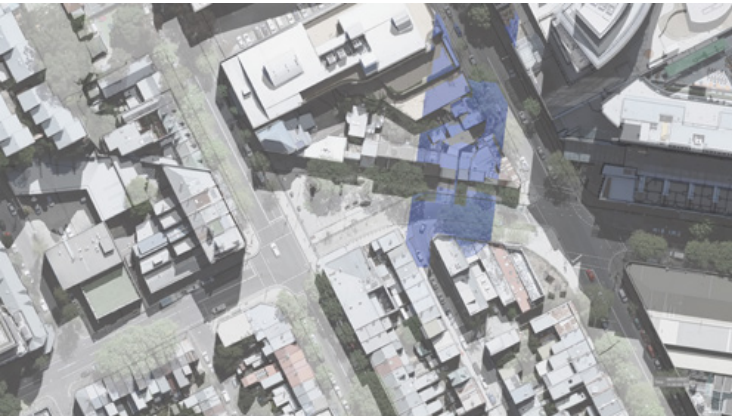
June 21 - 10.45am



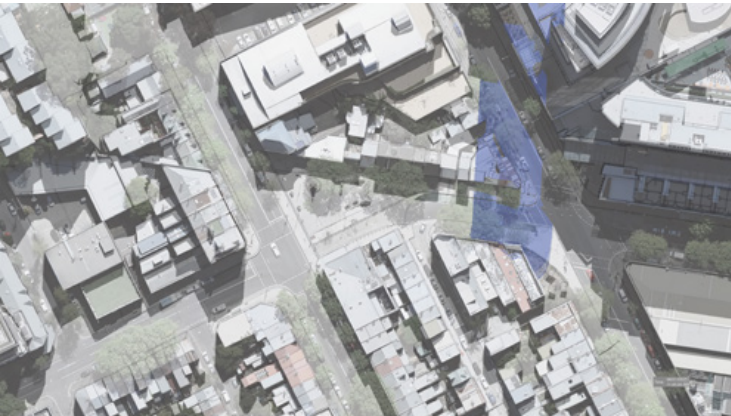
June 21 - 11.00am



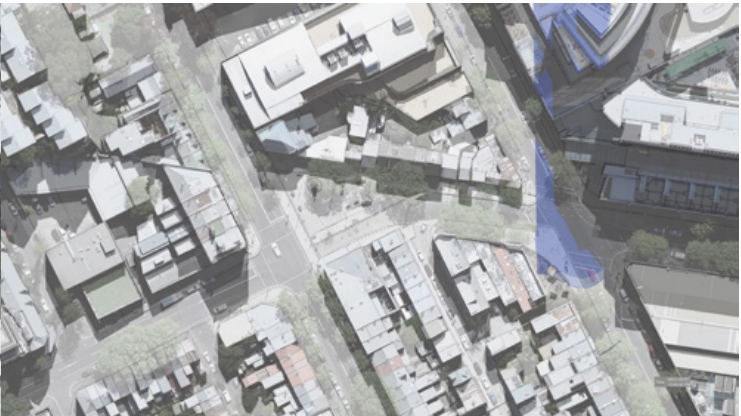
June 21 - 11.15am



June 21 - 11.30am



June 21 - 11.45am



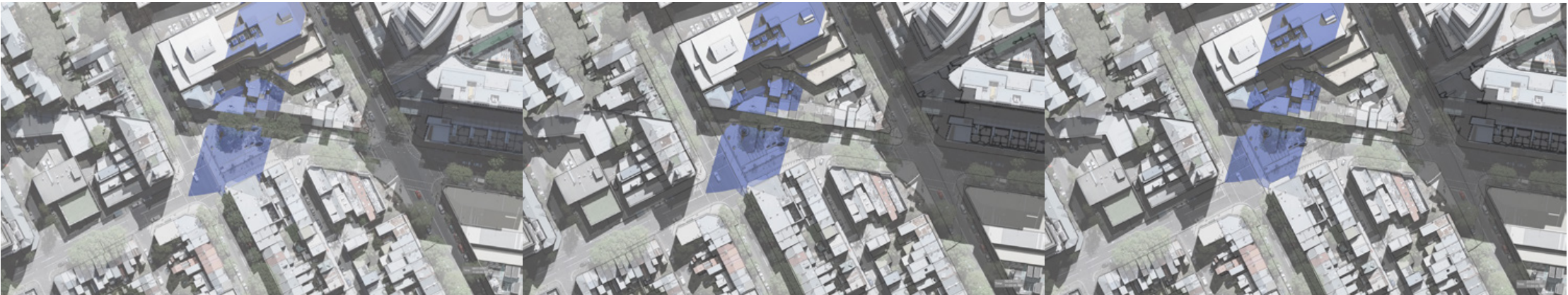
June 21 - noon

Union Square Shadow impact
at 21 June across year

The greatest shadow impact to Union Square is recorded at 11.00am when the mid winter shadow (21 June) covers the bulk of Union Square including the Pyrmont War Memorial.

The analysis shown on this page quantifies the portion of the year that Union Square is impacted. The middle row of shadow diagrams are taken at weekly intervals from 21 June until 19 July.

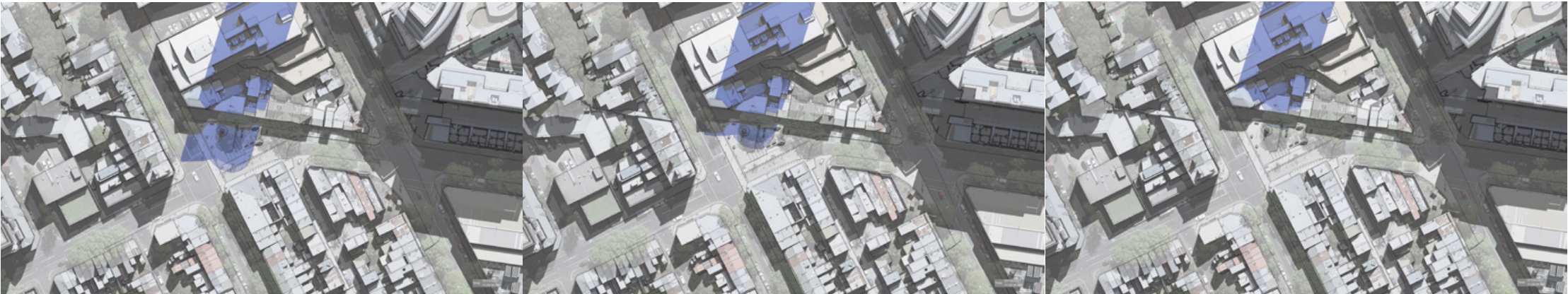
This analysis concludes that the 11.00am shadow has no impact on Union Square after 24 July. The shadow impacts to Union Square are therefor limited to between 19 May and 24 July, i.e. 66 days per year. This equates to 18% of the year.



June 21 - 11.00am

June 28 - 11.00am

July 05 - 11.00am



July 12 - 11.00am

July 19 - 11.00am

July 24 - 11.00am



architecture
interiors
urban
landscape
community

Sydney
Melbourne
Oxford
London