

**Podium Lighting**

Podium level exterior illumination will generally be in covered areas and localised for minimal impact on surrounding areas. Soft and hard landscaped areas may include up-lights to trees and feature architectural elements. In these cases luminaires will be provided with accessories to minimise direct view of the light source and aimed to minimise light spill.

The podium includes an external terrace area at Level 05. Illumination to the terrace will be low level and localized for minimal affect on surrounding areas.

**The Ribbon**

The Ribbon connects the new hotel and residential tower to the existing Star complex on Pirrama Road. Two large structural columns extend upwards from ground level at Pirrama Road and outwards to the Level 7 pool deck.

The skin of this wing-like structure will include integrated LED lighting and in-ground up-lights for dynamic and colour-changing light effects. The luminance of this façade and light sources will be designed in accordance with Australian Standard 4282 – 1997.

Level 07 of The Ribbon includes two pool decks with landscaped areas. All lighting to pool decks and landscaping will be integrated with the architecture, at low level and localized for minimal affect on surrounding areas.



**Ribbon element & sky terrace**

**Neighbourhood centre**

**Porte Cochere**

**Pirrama Rd interface and Lightrail**



**Porte Cochere**

The porte cochere awning feature proclaims The Ritz Carlton hotel arrival and provides weather cover to the Pirrama Rd footpath. The cladding of the feature will include integrated LED lighting and in-ground up-lights for dynamic and colour-changing light effects, similar to The Ribbon. The luminance of this façade and light sources will be designed in accordance with Australian Standard 4282 – 1997.





## 15.0 Reactivation of entry points

Summary of Client Brief

Vision Statement

Modification 13 Design Approach

Reactivation of corner entry points

Entry 1 - Cnr of Pymont & Union Street

Entry 2 - Cnr of Edward & Union Street

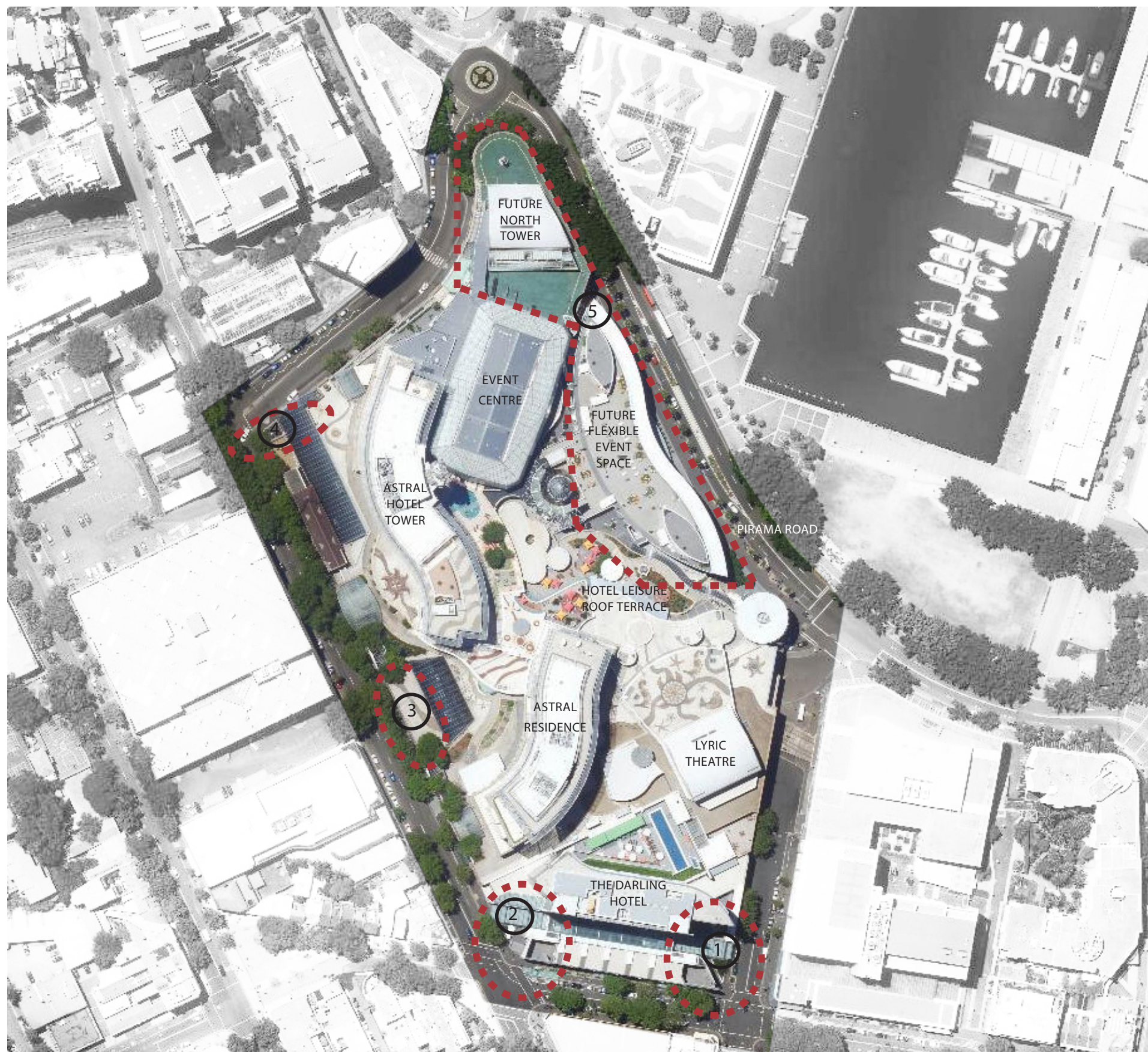
Pymont Street carpark entry

SELS Plaza

Restaurant Street

Light Rail on Level B2





## 15.1 Summary of Client Brief

Part of the site development opportunities being considered under Modification 13 is the reactivation of the corner entry points at both the corner of Pyrmont Street and Union Street, together with Union Street and Edward Street.

The ambition of these works is to expand the renewed food and beverage strategy across the site to provide new opportunities at the entry points to the hotel lobbies in order to further activate these areas and improve connection to the street front.

The client brief also aims to revitalize the Pyrmont Street carpark entry, SELS building cafe plaza as well as the restaurant street.

## 15.2 Vision Statement

The reactivation of the corner entry points is to navigate the existing building massing and finishes at the urban scale and provide appropriate design responses that sit comfortably in their context. It is important that these new proposals define the hotel entry conditions that converge at these locations and is achieved with a sensitivity to limiting adverse heritage impacts on the SELS building or nearby heritage items within the Pyrmont Conservation Area.

### Legend

- 1. Retail Entry 1 - Corner of Pyrmont & Union Street
- 2. Retail Entry 2 - Corner of Edward & Union Street
- 3. Pyrmont Street carpark entry
- 4. SELS plaza
- 5. Restaurant Street

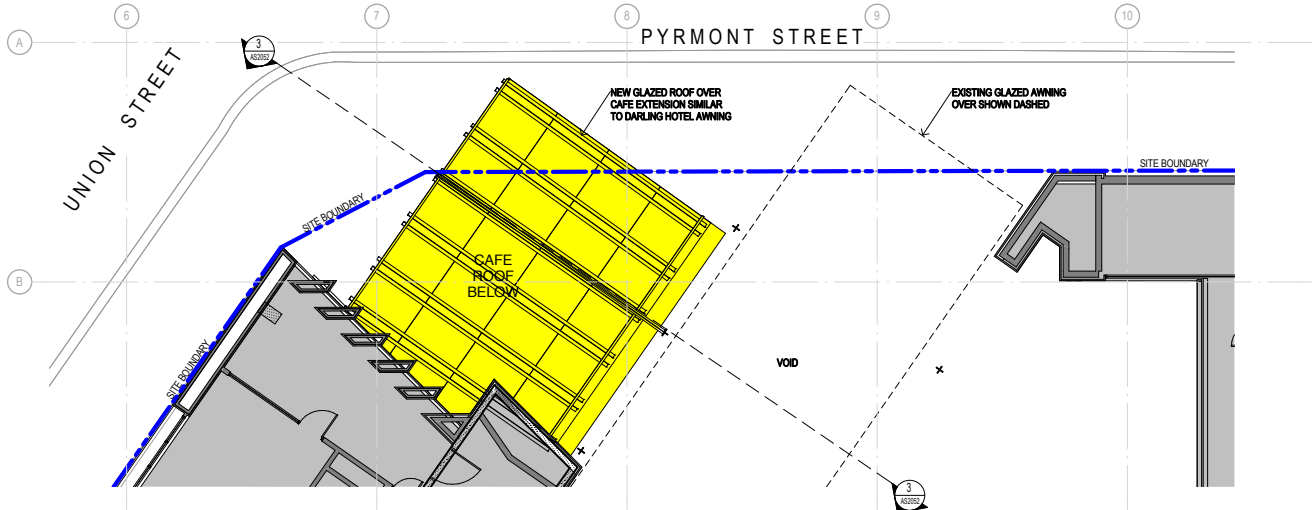
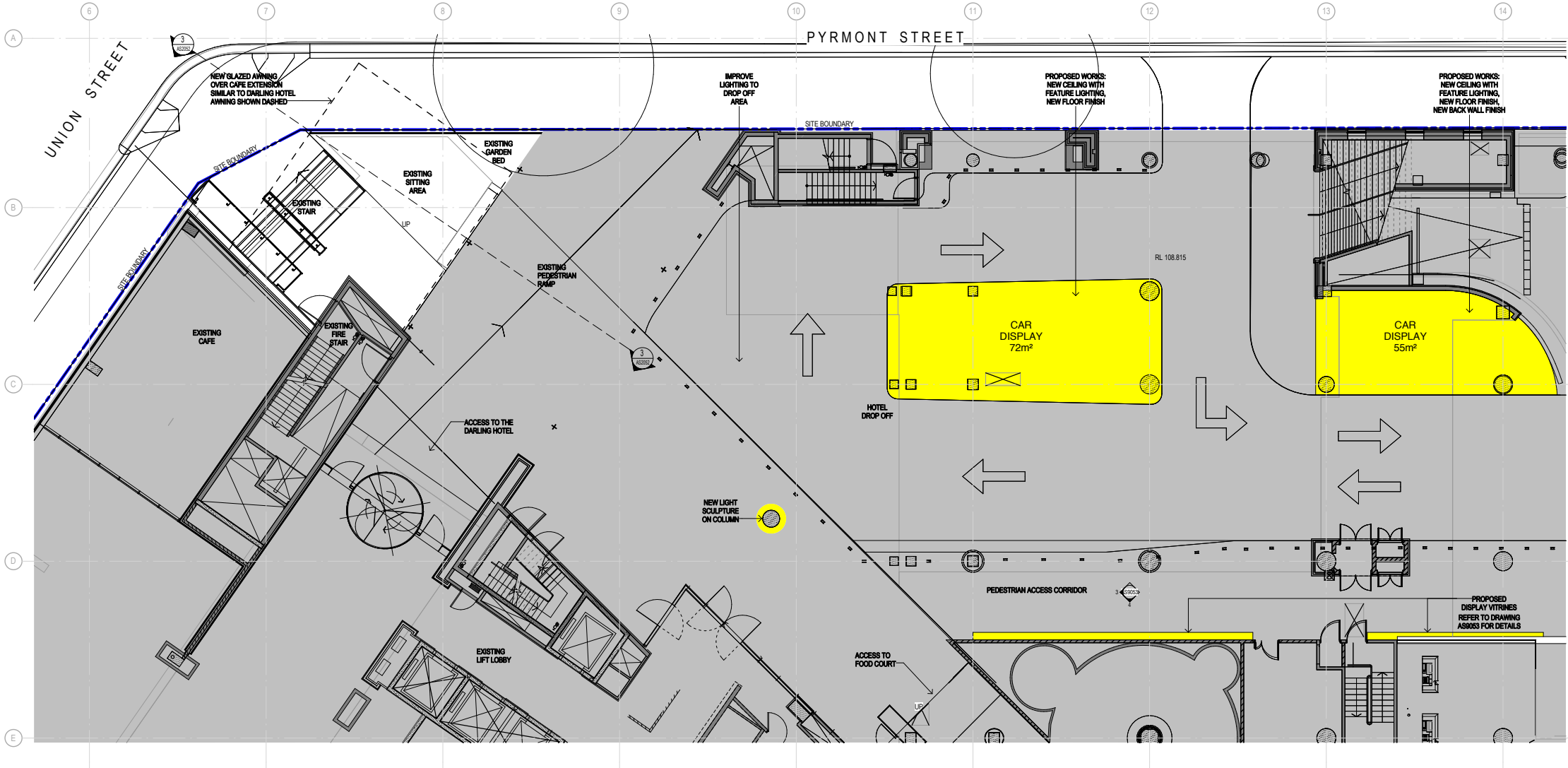


## 15.3 Design Approach

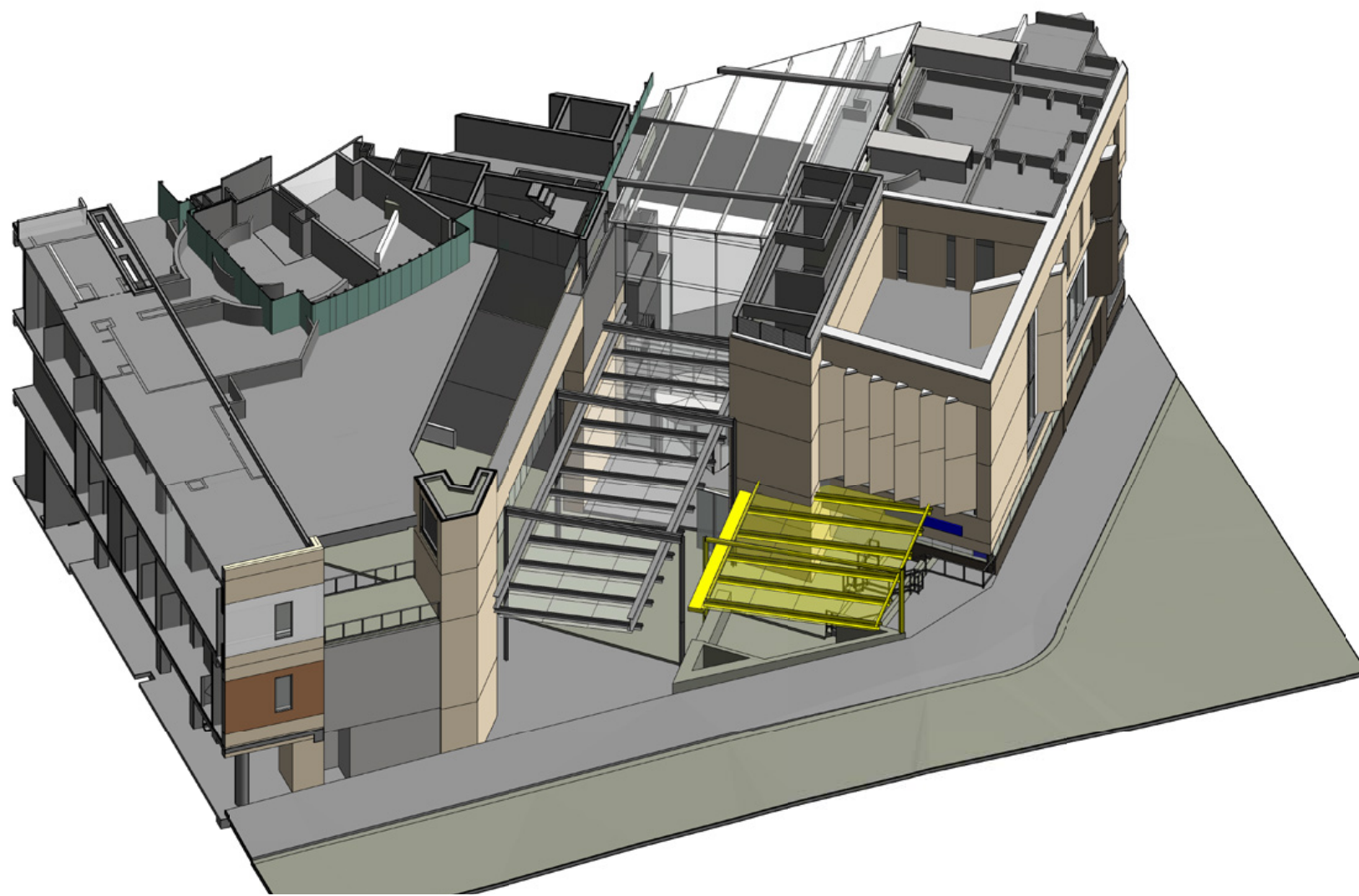
Entry (Corner of Pymont and Union Streets)

EXISTING CONDITIONS

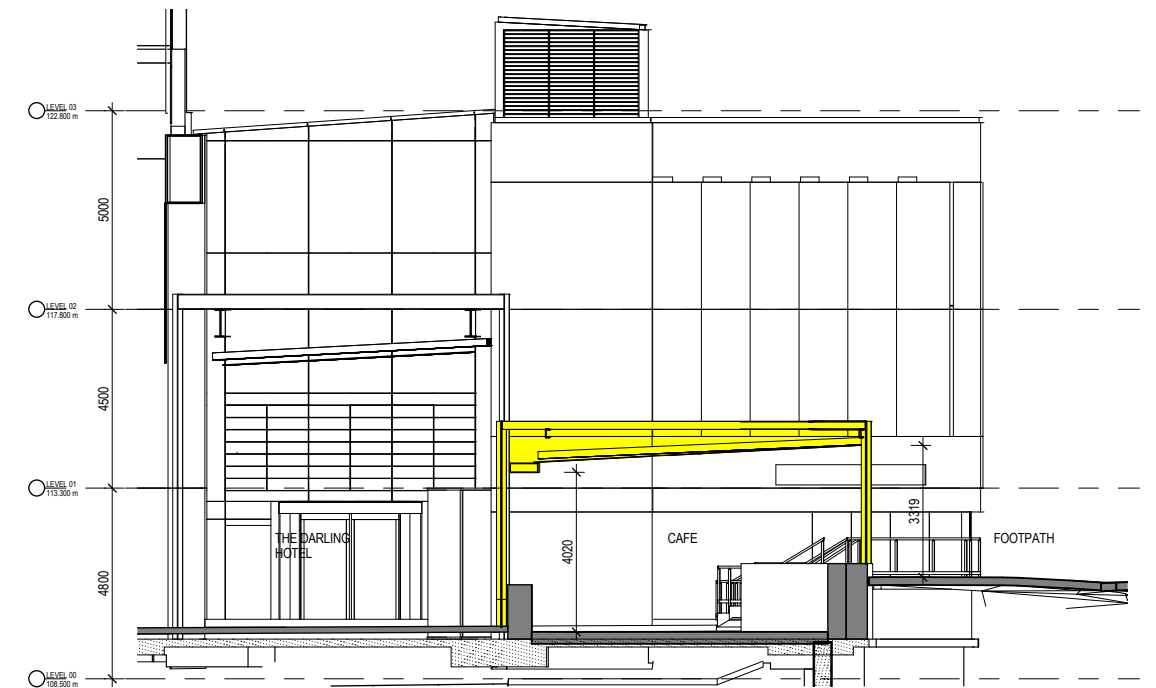




PLAN VIEW\_CORNER OF PYRMONT AND UNION STREETS

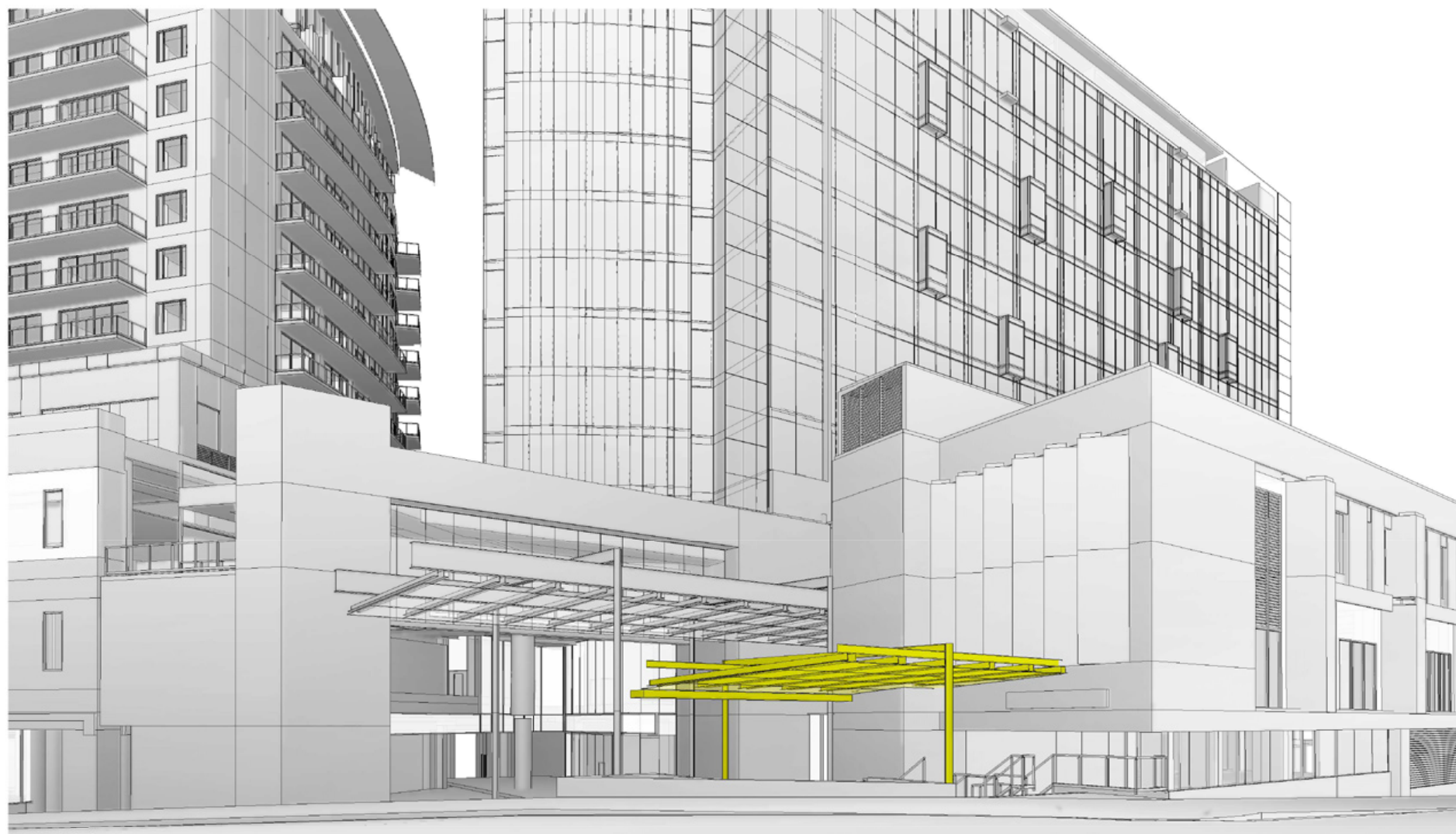


ISOMETRIC VIEW\_CORNER OF PYRMONT AND UNION STREETS



SECTION VIEW\_CORNER OF PYRMONT AND UNION STREETS





3D VIEW\_CORNER OF PYRMONT AND UNION STREETS

## 15.4 Entry (Corner of Pymont and Union Streets)

The newly proposed glazed awning over the existing café on the Corner of Pymont and Union Streets, seeks to make use of the existing elements and proportions of the current buildings. The addition of the glazed awning over the café clearly defines the zone and complements the existing solid sandstone façade directly adjacent. The new glazed awning is proposed to maintain the same design language as the existing awning leading into the Darling Hotel. The transparency through the new awning and openness to sides along the corner seeks to maintain an ongoing relationship and connection to the street front.

The orientation of the new awning has been positioned to maximize interaction with the busy intersection adjacent. The café seeks to maintain an abundance of natural light with an ongoing relationship and connection to the outdoors. The simple structure above and openness to all sides, allows for the ability to encourage friendly interaction with the street front and spontaneous meetings at street level.



Entry (Corner of Edward and Union Streets)

EXISTING CONDITIONS