

GENERAL NOTES

- ALL DIMENSIONS AND EXISTING CONDITIONS SHALL BE
- CHECKED AND VERIFIED BY THE CONTRACTOR BEFORE PROCEEDING WITH THE WORK
- ALL LEVELS RELATIVE TO 'AUSTRALIAN HEIGHT DATUM'
- DO NOT SCALE DRAWINGS
- USE FIGURED DIMENSIONS ONLY

legend

BUILDING USE

- HOTEL
- HOTEL FACILITIES
- LOADING, PLANT
- LIFTS, FIRE STAIRS, SERVICES
- ANCILLARY, BOH
- CIRCULATION
- NEIGHBOURHOOD CENTRE
- RETAIL
- FOOD & BEVERAGE
- RESIDENTIAL
- RESIDENTIAL FACILITIES

SITE BOUNDARY

EXISTING BUILT FORM



EXISTING BUILT FORM

EXTENT OF CAR STACKER BELOW

- A ADAPTABLE APARTMENT / HOTEL ROOM
- UD UNIVERSAL DESIGN

HOTEL TYPES

- DOUBLE QUEEN
- KING
- CORNER EXECUTIVE
- SUITE
- 2 LEVEL SUITE
- PRESIDENTIAL SUITE
- RITZ-CARLTON SUITE

NOTE: SPATIAL PROVISION INCLUDED TO ACCOMMODATE AS1428.1, UPDATES AS REQUIRED AT DETAILED DESIGN



DA01	1/9/17	DEVELOPMENT APPLICATION	NY	SMP
rev	date	name	by	chk

fjmt studio architecture interiors landscape urban community
sydney melbourne uk
Level 5, 70 King Street • +61 2 9251 7077 • fjmtstudio.com



project
Modification 13
80 PYRMONT STREET
PYRMONT NSW 2009

title
General Arrangement Plans
Level 43 - 45 Typical Hotel Floor Plan

scale	1:150 @ A1	first issued	1/9/17
project code	sheet no.	revision	
SM13	AF2043	DA01	

GENERAL NOTES

- ALL DIMENSIONS AND EXISTING CONDITIONS SHALL BE
- CHECKED AND VERIFIED BY THE CONTRACTOR BEFORE PROCEEDING WITH THE WORK
- ALL LEVELS RELATIVE TO 'AUSTRALIAN HEIGHT DATUM'
- DO NOT SCALE DRAWINGS
- USE FIGURED DIMENSIONS ONLY

legend

BUILDING USE

- HOTEL
- HOTEL FACILITIES
- LOADING, PLANT
- LIFTS, FIRE STAIRS, SERVICES
- ANCILLARY, BOH
- CIRCULATION
- NEIGHBOURHOOD CENTRE
- RETAIL
- FOOD & BEVERAGE
- RESIDENTIAL
- RESIDENTIAL FACILITIES

SITE BOUNDARY

EXISTING BUILT FORM

EXISTING BUILT FORM

EXTENT OF CAR STACKER BELOW

- ADAPTABLE APARTMENT / HOTEL ROOM
- UNIVERSAL DESIGN

HOTEL TYPES

- DOUBLE QUEEN
- KING
- CORNER EXECUTIVE
- SUITE
- 2 LEVEL SUITE
- PRESIDENTIAL SUITE
- RITZ-CARLTON SUITE

NOTE: SPATIAL PROVISION INCLUDED TO ACCOMMODATE AS1428.1, UPDATES AS REQUIRED AT DETAILED DESIGN



DA01	1/9/17	DEVELOPMENT APPLICATION	NY	SMP
rev	date	name	by	chk

fjmt studio architecture interiors landscape urban community
sydney melbourne uk
Level 5, 70 King Street • +61 2 9251 7077 • fjmtstudio.com



project
Modification 13
80 PYRMONT STREET
PYRMONT NSW 2009

title
General Arrangement Plans
Level 46 - 57 Typical Hotel Floor Plan

scale	1:150 @ A1	first issued	1/9/17
project code	sheet no.	revision	
SM13	AF2046	DA01	

GENERAL NOTES

- ALL DIMENSIONS AND EXISTING CONDITIONS SHALL BE CHECKED AND VERIFIED BY THE CONTRACTOR BEFORE PROCEEDING WITH THE WORK
- ALL LEVELS RELATIVE TO 'AUSTRALIAN HEIGHT DATUM'
- DO NOT SCALE DRAWINGS
- USE FIGURED DIMENSIONS ONLY

legend

BUILDING USE

- HOTEL
- HOTEL FACILITIES
- LOADING, PLANT
- LIFTS, FIRE STAIRS, SERVICES
- ANCILLARY, BOH
- CIRCULATION
- NEIGHBOURHOOD CENTRE
- RETAIL
- FOOD & BEVERAGE
- RESIDENTIAL
- RESIDENTIAL FACILITIES

SITE BOUNDARY

EXISTING BUILT FORM

EXISTING BUILT FORM

EXTENT OF CAR STACKER BELOW

- ADAPTABLE APARTMENT / HOTEL ROOM
- UNIVERSAL DESIGN

HOTEL TYPES

- DOUBLE QUEEN
- KING
- CORNER EXECUTIVE
- SUITE
- 2 LEVEL SUITE
- PRESIDENTIAL SUITE
- RITZ-CARLTON SUITE

NOTE: SPATIAL PROVISION INCLUDED TO ACCOMMODATE AS1428.1, UPDATES AS REQUIRED AT DETAILED DESIGN



DA01	1/9/17	DEVELOPMENT APPLICATION	NY	SMP
rev	date	name	by	chk

fjmt studio architecture interiors landscape urban community
sydney melbourne uk
Level 5, 70 King Street • +61 2 9251 7077 • fjmtstudio.com



project
Modification 13
80 PYRMONT STREET
PYRMONT NSW 2009

title
General Arrangement Plans
Level 58 Typical Hotel Floor Plan

scale	1:150 @ A1	first issued	1/9/17
project code	sheet no.	revision	
SM13	AF2058	DA01	

GENERAL NOTES

- ALL DIMENSIONS AND EXISTING CONDITIONS SHALL BE
- CHECKED AND VERIFIED BY THE CONTRACTOR BEFORE PROCEEDING WITH THE WORK
- ALL LEVELS RELATIVE TO 'AUSTRALIAN HEIGHT DATUM'
- DO NOT SCALE DRAWINGS
- USE FIGURED DIMENSIONS ONLY

legend

BUILDING USE

- HOTEL
- HOTEL FACILITIES
- LOADING, PLANT
- LIFTS, FIRE STAIRS, SERVICES
- ANCILLARY, BOH
- CIRCULATION
- NEIGHBOURHOOD CENTRE
- RETAIL
- FOOD & BEVERAGE
- RESIDENTIAL
- RESIDENTIAL FACILITIES

SITE BOUNDARY

EXISTING BUILT FORM

EXISTING BUILT FORM

EXTENT OF CAR STACKER BELOW

A ADAPTABLE APARTMENT / HOTEL ROOM

UD UNIVERSAL DESIGN

HOTEL TYPES

- DOUBLE QUEEN
- KING
- CORNER EXECUTIVE
- SUITE
- 2 LEVEL SUITE
- PRESIDENTIAL SUITE
- RITZ-CARLTON SUITE

NOTE: SPATIAL PROVISION INCLUDED TO ACCOMMODATE AS1428.1, UPDATES AS REQUIRED AT DETAILED DESIGN



DA01 1/9/17 DEVELOPMENT APPLICATION NY SMP

rev date name by chk

fjmt studio architecture interiors landscape urban community
sydney melbourne uk
Level 5, 70 King Street t +61 2 9251 7077 w fjmtstudio.com



project
Modification 13
80 PYRMONT STREET
PYRMONT NSW 2009

title
General Arrangement Plans
Level 59 Club Lounge + Terrace Floor
Plan

scale 1:150 @ A1 first issued 1/9/17

project code sheet no. revision

SM13 AF2059 DA01

GENERAL NOTES

- ALL DIMENSIONS AND EXISTING CONDITIONS SHALL BE CHECKED AND VERIFIED BY THE CONTRACTOR BEFORE PROCEEDING WITH THE WORK
- ALL LEVELS RELATIVE TO 'AUSTRALIAN HEIGHT DATUM'
- DO NOT SCALE DRAWINGS
- USE FIGURED DIMENSIONS ONLY

legend

BUILDING USE

- HOTEL
- HOTEL FACILITIES
- LOADING, PLANT
- LIFTS, FIRE STAIRS, SERVICES
- ANCILLARY, BOH
- CIRCULATION
- NEIGHBOURHOOD CENTRE
- RETAIL
- FOOD & BEVERAGE
- RESIDENTIAL
- RESIDENTIAL FACILITIES

SITE BOUNDARY

EXISTING BUILT FORM

EXISTING BUILT FORM

EXTENT OF CAR STACKER BELOW

- ADAPTABLE APARTMENT / HOTEL ROOM
- UNIVERSAL DESIGN

HOTEL TYPES

- DOUBLE QUEEN
- KING
- CORNER EXECUTIVE
- SUITE
- 2 LEVEL SUITE
- PRESIDENTIAL SUITE
- RITZ-CARLTON SUITE

NOTE: SPATIAL PROVISION INCLUDED TO ACCOMMODATE AS1428.1, UPDATES AS REQUIRED AT DETAILED DESIGN



DA01	1/9/17	DEVELOPMENT APPLICATION	NY	SMP
rev	date	name	by	chk

fjmt studio architecture interiors landscape urban community
sydney melbourne uk
Level 5, 70 King Street E +61 2 9251 7077 www.fjmtstudio.com



project
Modification 13
80 PYRMONT STREET
PYRMONT NSW 2009

title
General Arrangement Plans
Level 60 Sky Villa Floor Plan

scale	1:150 @ A1	first issued	1/9/17
project code	sheet no.	revision	
SM13	AF2060	DA01	

GENERAL NOTES

- ALL DIMENSIONS AND EXISTING CONDITIONS SHALL BE
- CHECKED AND VERIFIED BY THE CONTRACTOR BEFORE PROCEEDING WITH THE WORK
- ALL LEVELS RELATIVE TO 'AUSTRALIAN HEIGHT DATUM'
- DO NOT SCALE DRAWINGS
- USE FIGURED DIMENSIONS ONLY

legend

BUILDING USE

- HOTEL
- HOTEL FACILITIES
- LOADING, PLANT
- LIFTS, FIRE STAIRS, SERVICES
- ANCILLARY, BOH
- CIRCULATION
- NEIGHBOURHOOD CENTRE
- RETAIL
- FOOD & BEVERAGE
- RESIDENTIAL
- RESIDENTIAL FACILITIES

SITE BOUNDARY

EXISTING BUILT FORM

EXISTING BUILT FORM

EXTENT OF CAR STACKER BELOW

- ADAPTABLE APARTMENT / HOTEL ROOM
- UNIVERSAL DESIGN

HOTEL TYPES

- DOUBLE QUEEN
- KING
- CORNER EXECUTIVE
- SUITE
- 2 LEVEL SUITE
- PRESIDENTIAL SUITE
- RITZ-CARLTON SUITE

NOTE: SPATIAL PROVISION INCLUDED TO ACCOMMODATE AS1428.1, UPDATES AS REQUIRED AT DETAILED DESIGN



DA01	1/9/17	DEVELOPMENT APPLICATION	NY	SMP
rev	date	name	by	chk







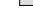




fjmt studio architecture interiors landscape urban community
sydney melbourne uk
Level 5, 70 King Street E +61 2 9251 7077 fjmtstudio.com



project
Modification 13
80 PYRMONT STREET
PYRMONT NSW 2009

title
General Arrangement Plans
Level 61 Sky Villa Floor Plan

scale	1:150 @ A1	first issued	1/9/17
project code	sheet no.	revision	
SM13	AF2061	DA01	

	HOTEL
	HOTEL FACILITIES
	LOADING, PLANT
	LIFTS, FIRE STAIRS, SERVICES
	ANCILLARY, BOH
	CIRCULATION
	NEIGHBOURHOOD CENTRE
	RETAIL
	FOOD & BEVERAGE
	RESIDENTIAL
	RESIDENTIAL FACILITIES

EXISTING BUILT FORM

EXISTING BUILT FORM

EXISTING BUILT FORM








EXISTING BUILT FORM

EXTENT OF CAR STACKER BELOW

A ADAPTABLE APARTMENT /

11. **UNITED STATES**

HOTEL TYPES

	DOUBLE QUEEN
	KING
	CORNER EXECUTIVE
	SUITE
	2 LEVEL SUITE
	PRESIDENTIAL SUITE
	RITZ-CARLTON SUITE

NOTE: SPATIAL PROVISION INCLUDED TO ACCOMMODATE AS1428.1,
UPDATES AS REQUIRED AT DETAILED DESIGN



fjmt studio architecture interiors landscape urban community
sydney melbourne uk
 Level 5, 70 King Street t +61 2 9261 7077 w fjmtstudio.com

project

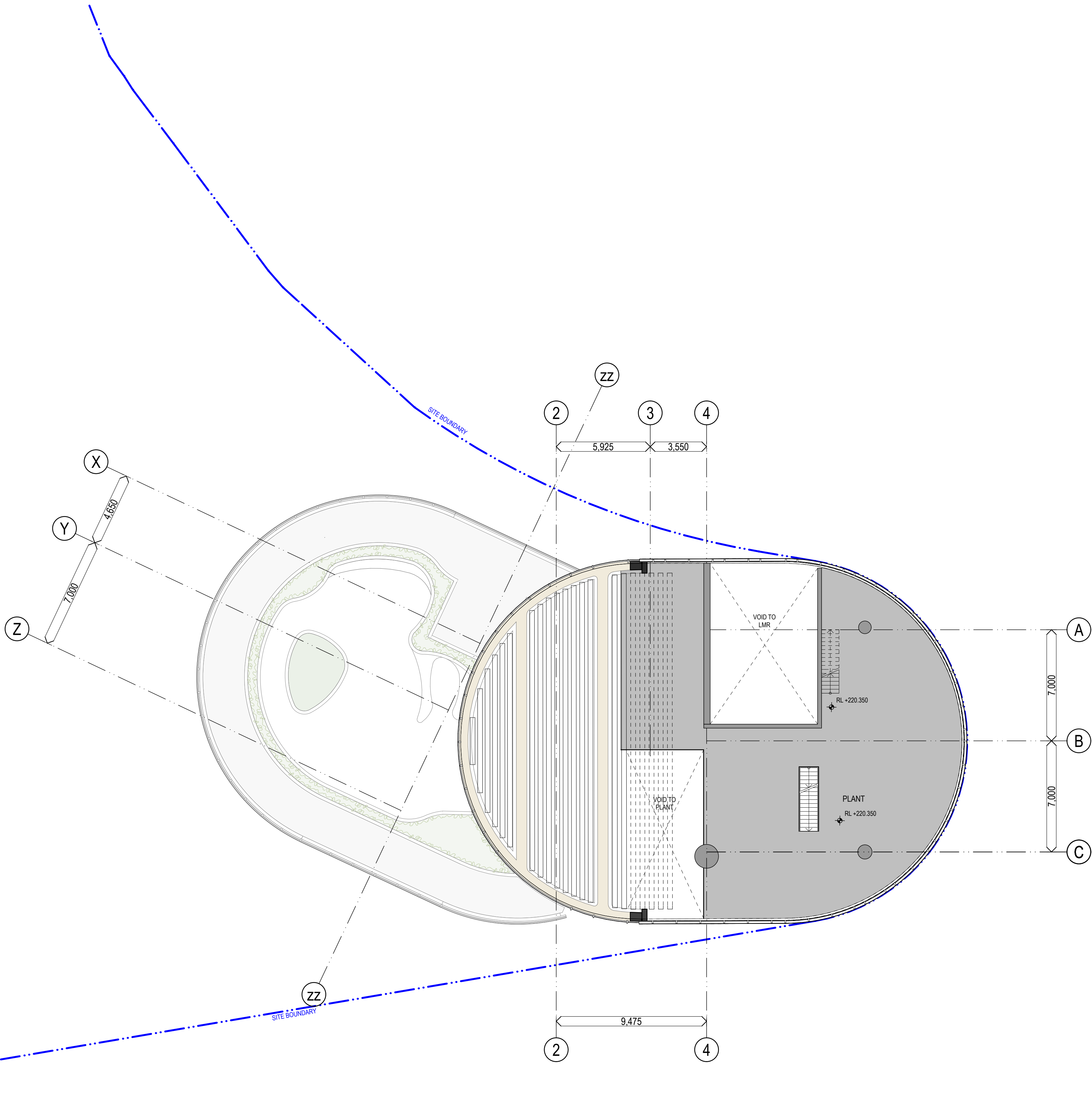
Modification 13
80 PYRMONT STREET
PYRMONT NSW 2009

title
General Arrangement Plans
Level 62 Roof Plant Floor Plan

scale	1:150 @ A1	first issued	1/9/17
-------	------------	--------------	--------

project code	sheet no.	revision
--------------	-----------	----------

SM13 AF2062 DA01



- GENERAL NOTES**
- ALL DIMENSIONS AND EXISTING CONDITIONS SHALL BE
 - CHECKED AND VERIFIED BY THE CONTRACTOR BEFORE PROCEEDING WITH THE WORK
 - ALL LEVELS RELATIVE TO 'AUSTRALIAN HEIGHT DATUM'
 - DO NOT SCALE DRAWINGS
 - USE FIGURED DIMENSIONS ONLY

legend	
BUILDING USE	
	HOTEL
	HOTEL FACILITIES
	LOADING, PLANT
	LIFTS, FIRE STAIRS, SERVICES
	ANCILLARY, BOH
	CIRCULATION
	NEIGHBOURHOOD CENTRE
	RETAIL
	FOOD & BEVERAGE
	RESIDENTIAL
	RESIDENTIAL FACILITIES
	SITE BOUNDARY
	EXISTING BUILT FORM
	EXISTING BUILT FORM
	EXTENT OF CAR STACKER BELOW

A	ADAPTABLE APARTMENT / HOTEL ROOM
UD	UNIVERSAL DESIGN
HOTEL TYPES	
	DOUBLE QUEEN
	KING
	CORNER EXECUTIVE
	SUITE
	2 LEVEL SUITE
	PRESIDENTIAL SUITE
	RITZ-CARLTON SUITE

NOTE: SPATIAL PROVISION INCLUDED TO ACCOMMODATE AS1428.1, UPDATES AS REQUIRED AT DETAILED DESIGN

Average star rating
8.0
NATIONWIDE HOUSE
www.nathers.gov.au

Certificate Number: GAD1RM2336
Assessor Name: Nicholas Asha
Accreditation number: VIC/BDVH161712
Certificate date: 2 Aug 2018
Dwelling address: 20-80 Pyrmont St, Pyrmont NSW 2009
www.nathers.gov.au

https://www.fjmtstudio.com.au/GAD1RM2336.pdf

DA01	1/9/17	DEVELOPMENT APPLICATION	NY	SMP
rev	date	name	by	chk

fjmt studio architecture interiors landscape urban community
sydney melbourne uk
Level 5, 70 King Street • +61 2 9251 7077 • fjmtstudio.com

project
Modification 13
80 PYRMONT STREET
PYRMONT NSW 2009

title
General Arrangement Plans
Level 63 Roof Plant Floor Plan

scale	1:150 @ A1	first issued	1/9/17
project code	sheet no.	revision	
SM13	AF2063	DA01	

GENERAL NOTES

- ALL DIMENSIONS AND EXISTING CONDITIONS SHALL BE
- CHECKED AND VERIFIED BY THE CONTRACTOR BEFORE PROCEEDING WITH THE WORK
- ALL LEVELS RELATIVE TO 'AUSTRALIAN HEIGHT DATUM'
- DO NOT SCALE DRAWINGS
- USE FIGURED DIMENSIONS ONLY

legend

BUILDING USE

- HOTEL
- HOTEL FACILITIES
- LOADING, PLANT
- LIFTS, FIRE STAIRS, SERVICES
- ANCILLARY, BOH
- CIRCULATION
- NEIGHBOURHOOD CENTRE
- RETAIL
- FOOD & BEVERAGE
- RESIDENTIAL
- RESIDENTIAL FACILITIES

SITE BOUNDARY

EXISTING BUILT FORM

EXISTING BUILT FORM

EXTENT OF CAR STACKER BELOW

A ADAPTABLE APARTMENT / HOTEL ROOM

UD UNIVERSAL DESIGN

HOTEL TYPES

- DOUBLE QUEEN
- KING
- CORNER EXECUTIVE
- SUITE
- 2 LEVEL SUITE
- PRESIDENTIAL SUITE
- RITZ-CARLTON SUITE

NOTE: SPATIAL PROVISION INCLUDED TO ACCOMMODATE AS1428.1, UPDATES AS REQUIRED AT DETAILED DESIGN



DA01 1/9/17 DEVELOPMENT APPLICATION NY SMP

rev date name by chk

fjmt studio architecture interiors landscape urban community
sydney melbourne uk
Level 5, 70 King Street t +61 2 9251 7077 w fjmtstudio.com



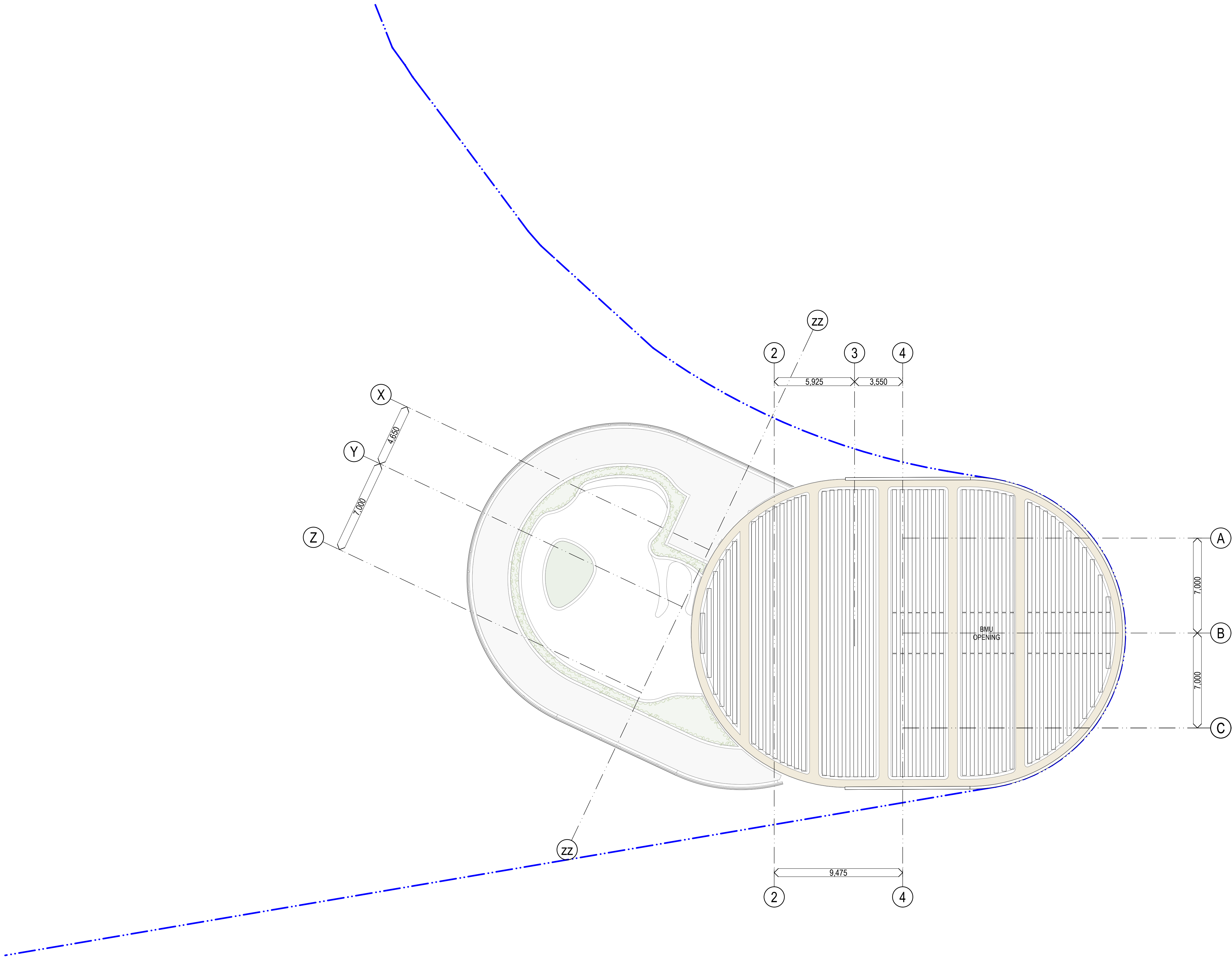
project
Modification 13
80 PYRMONT STREET
PYRMONT NSW 2009

title
General Arrangement Plans
Level 64 Roof Plant Floor Plan

scale 1:150 @ A1 first issued 1/9/17

project code sheet no. revision

SM13 AF2064 DA01



- GENERAL NOTES**
- ALL DIMENSIONS AND EXISTING CONDITIONS SHALL BE
 - CHECKED AND VERIFIED BY THE CONTRACTOR BEFORE PROCEEDING WITH THE WORK
 - ALL LEVELS RELATIVE TO 'AUSTRALIAN HEIGHT DATUM'
 - DO NOT SCALE DRAWINGS
 - USE FIGURED DIMENSIONS ONLY

legend

BUILDING USE	
	HOTEL
	HOTEL FACILITIES
	LOADING, PLANT
	LIFTS, FIRE STAIRS, SERVICES
	ANCILLARY, BOH
	CIRCULATION
	NEIGHBOURHOOD CENTRE
	RETAIL
	FOOD & BEVERAGE
	RESIDENTIAL
	RESIDENTIAL FACILITIES

SITE BOUNDARY

EXISTING BUILT FORM

EXISTING BUILT FORM

EXTENT OF CAR STACKER BELOW

A	ADAPTABLE APARTMENT / HOTEL ROOM
UD	UNIVERSAL DESIGN

HOTEL TYPES

	DOUBLE QUEEN
	KING
	CORNER EXECUTIVE
	SUITE
	2 LEVEL SUITE
	PRESIDENTIAL SUITE
	RITZ-CARLTON SUITE

NOTE: SPATIAL PROVISION INCLUDED TO ACCOMMODATE AS1428.1, UPDATES AS REQUIRED AT DETAILED DESIGN

Average star rating
8.0
NATIONWIDE HOUSE
Quality Standard
www.nathers.gov.au

Certificate Number: GAD1RM2336
Assessor Name: Nicholas Asha
Accreditation number: VIC/BDVH161712
Certificate date: 2 Aug 2018
Dwelling address: 20-80 Pyrmont St, Pyrmont NSW 2009
www.nathers.gov.au

https://www.fjmtstudio.com.au/GAD1RM2336/2009

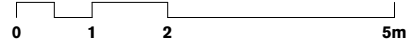
DA01	1/9/17	DEVELOPMENT APPLICATION	NY	SMP
rev	date	name	by	chk

fjmt studio architecture interiors landscape urban community
sydney melbourne uk
Level 5, 70 King Street • +61 2 9251 7077 • fjmtstudio.com

project
Modification 13
80 PYRMONT STREET
PYRMONT NSW 2009

title
General Arrangement Plans
Level 65 Roof Plan

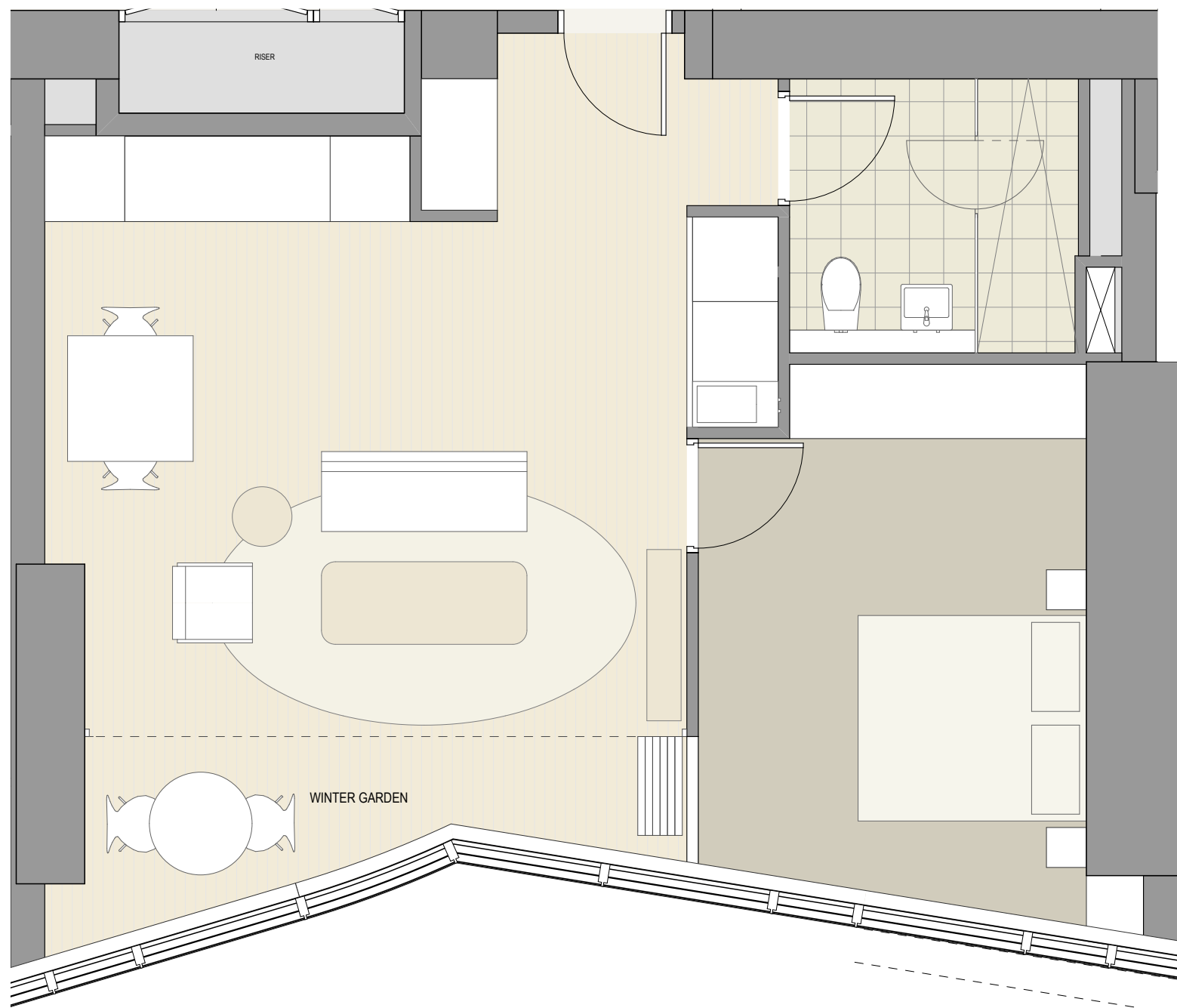
scale	1:150 @ A1	first issued	1/9/17
project code	sheet no.	revision	
SM13	AF2065	DA01	



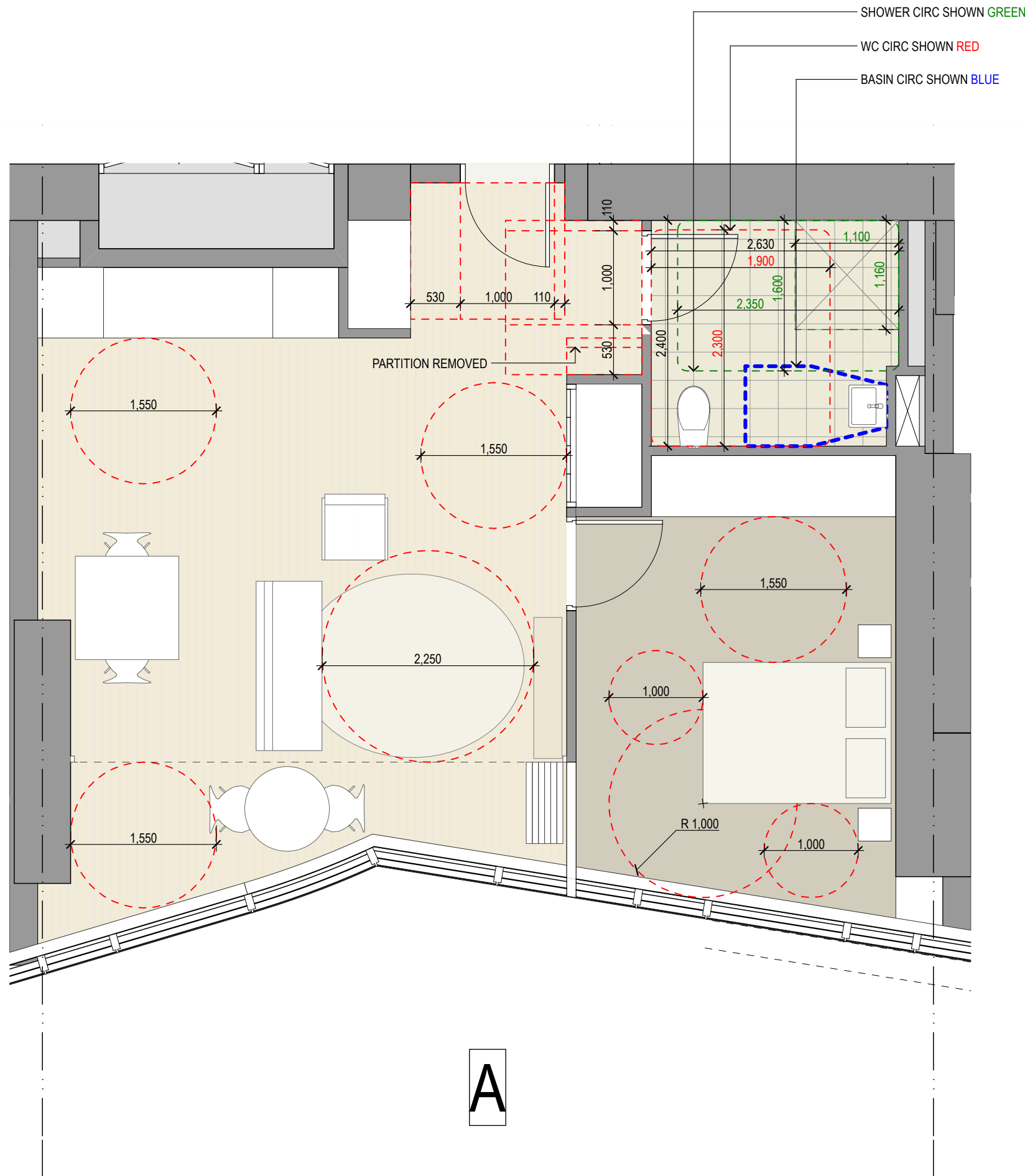
GENERAL NOTES

- ALL DIMENSIONS AND EXISTING CONDITIONS SHALL BE
- CHECKED AND VERIFIED BY THE CONTRACTOR BEFORE PROCEEDING WITH THE WORK
- ALL LEVELS RELATIVE TO 'AUSTRALIAN HEIGHT DATUM'
- DO NOT SCALE DRAWINGS
- USE FIGURED DIMENSIONS ONLY

legend



1 PLAN Pre-adaptation 1 Bed L15
1:50



2 PLAN Post-adaptation 1 Bed L15
1:50

A

DRAWINGS ILLUSTRATE TYPICAL SCENARIOS FOR ADAPTABLE APARTMENTS. ADAPTABLE APARTMENTS AND UNIVERSAL DESIGN ALLOCATION AS PER DESIGN REPORT AND STATEMENT.

1 BED ADAPTABLE APARTMENTS ON L05, L06, L15-19



DA01	1/9/17	DEVELOPMENT APPLICATION	NY	SMP
rev	date	name	by	chk

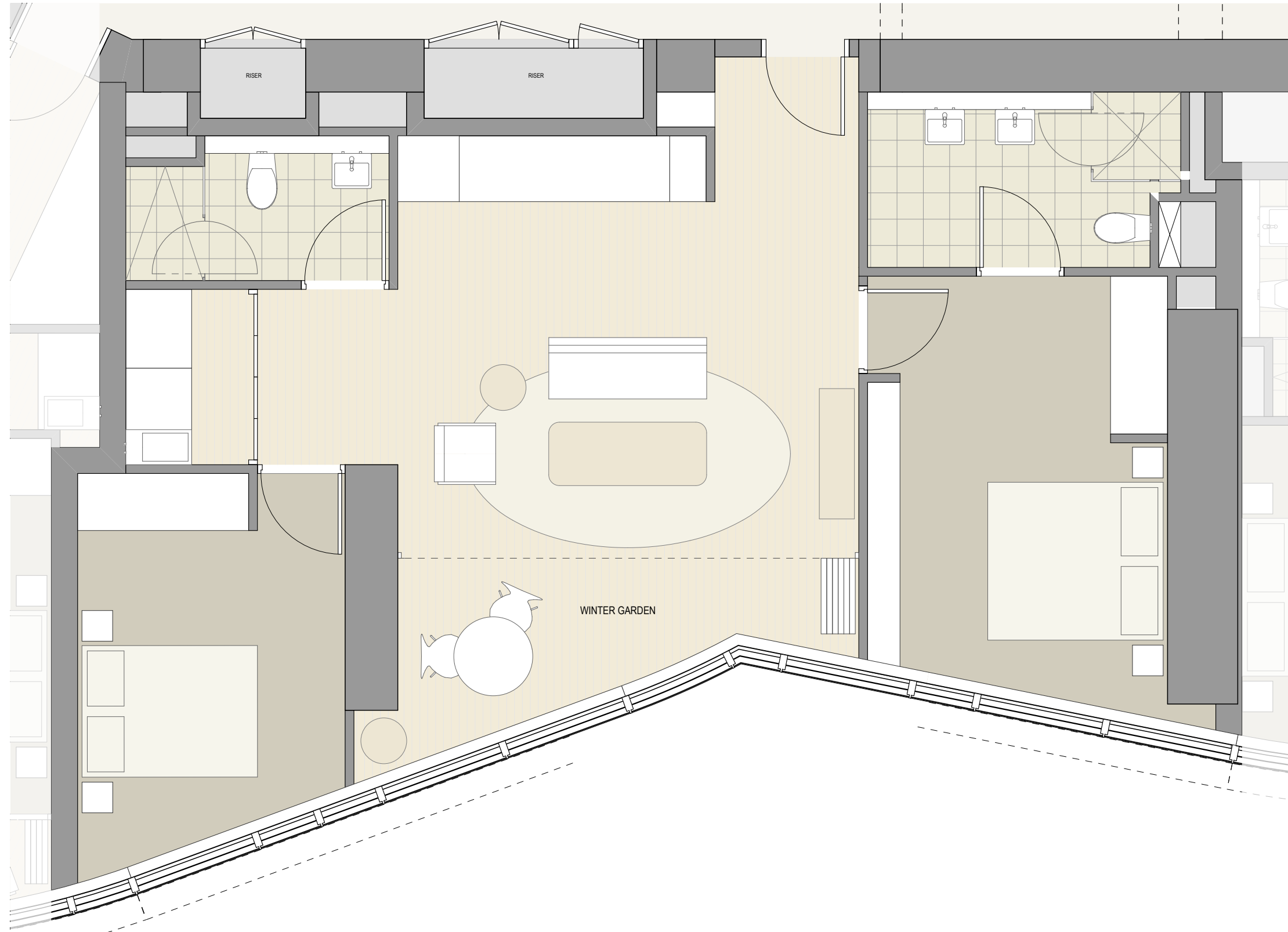
fjmt studio architecture interiors landscape urban community
sydney melbourne uk
Level 5, 70 King Street t +61 2 9251 7077 w fjmtstudio.com



project
Modification 13
80 PYRMONT STREET
PYRMONT NSW 2009

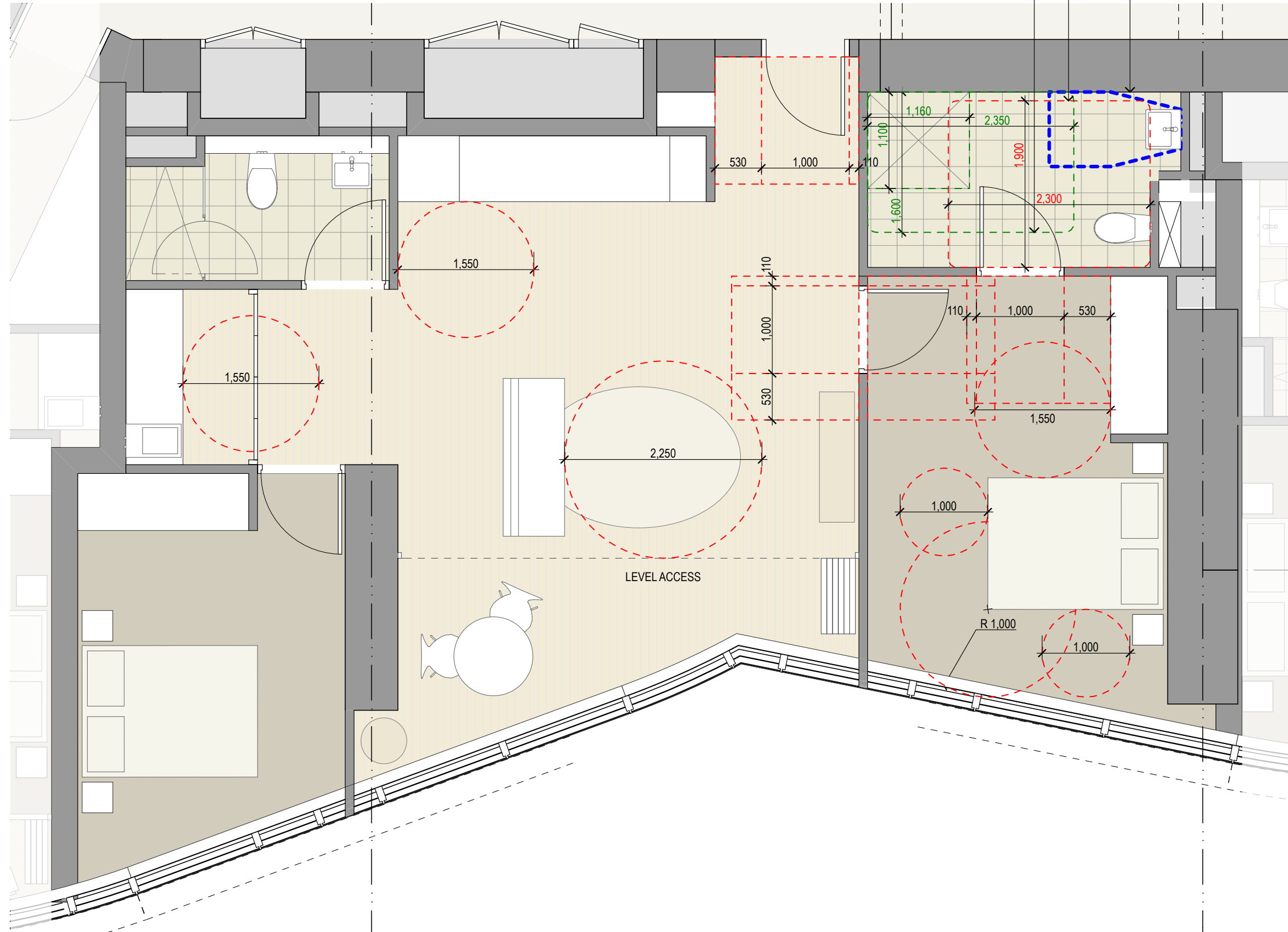
title
General Arrangement Plans
Adaptable Apartments Typical 1 Bed

scale	1:100 @ A1	first issued	1/9/17
project code	sheet no.	revision	
SM13	AF2501	DA01	

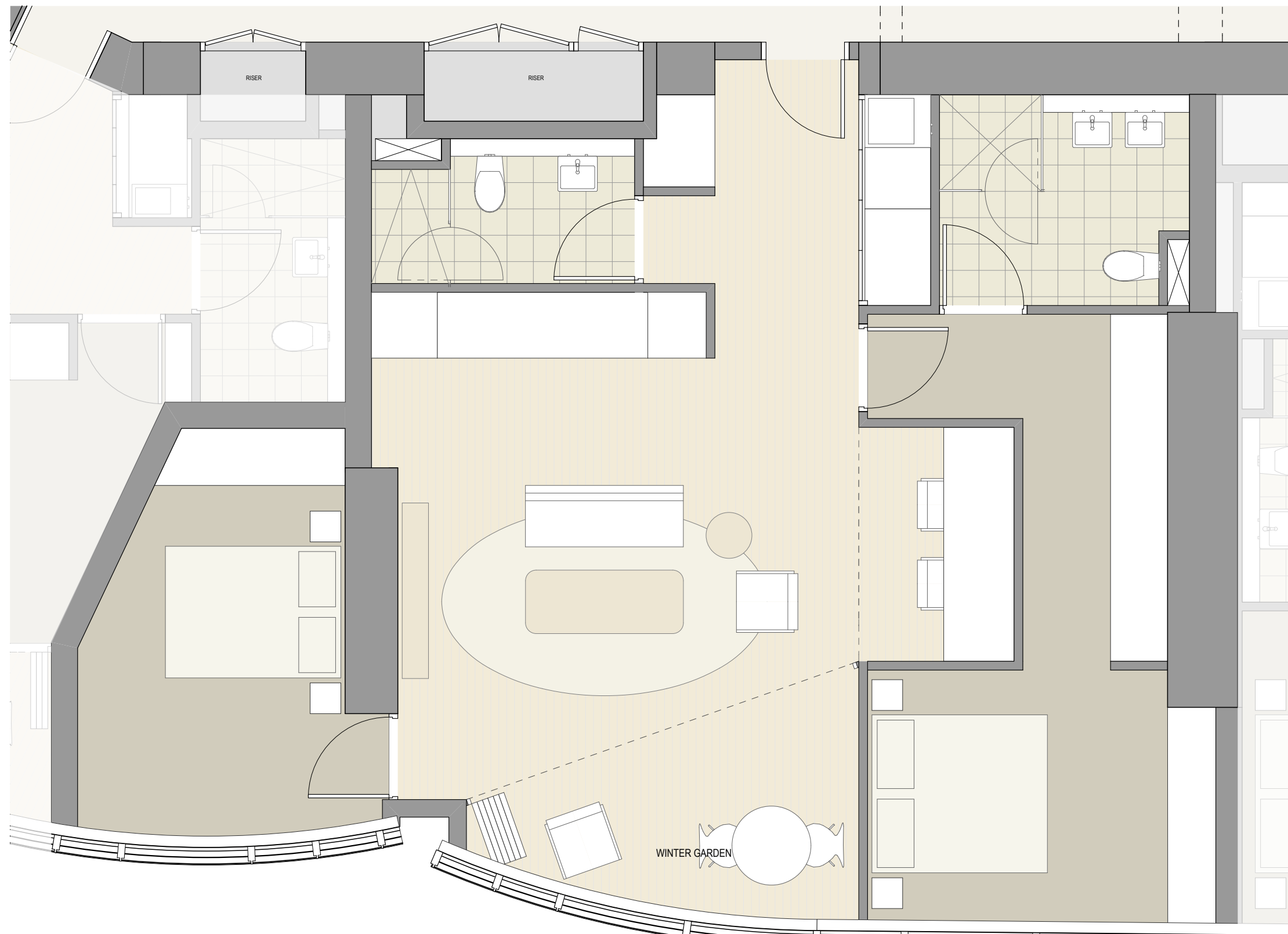


1 PLAN Pre-adaptation 2 Bed L08
1:50

2 BED ADAPTABLE APARTMENTS ON L08-14

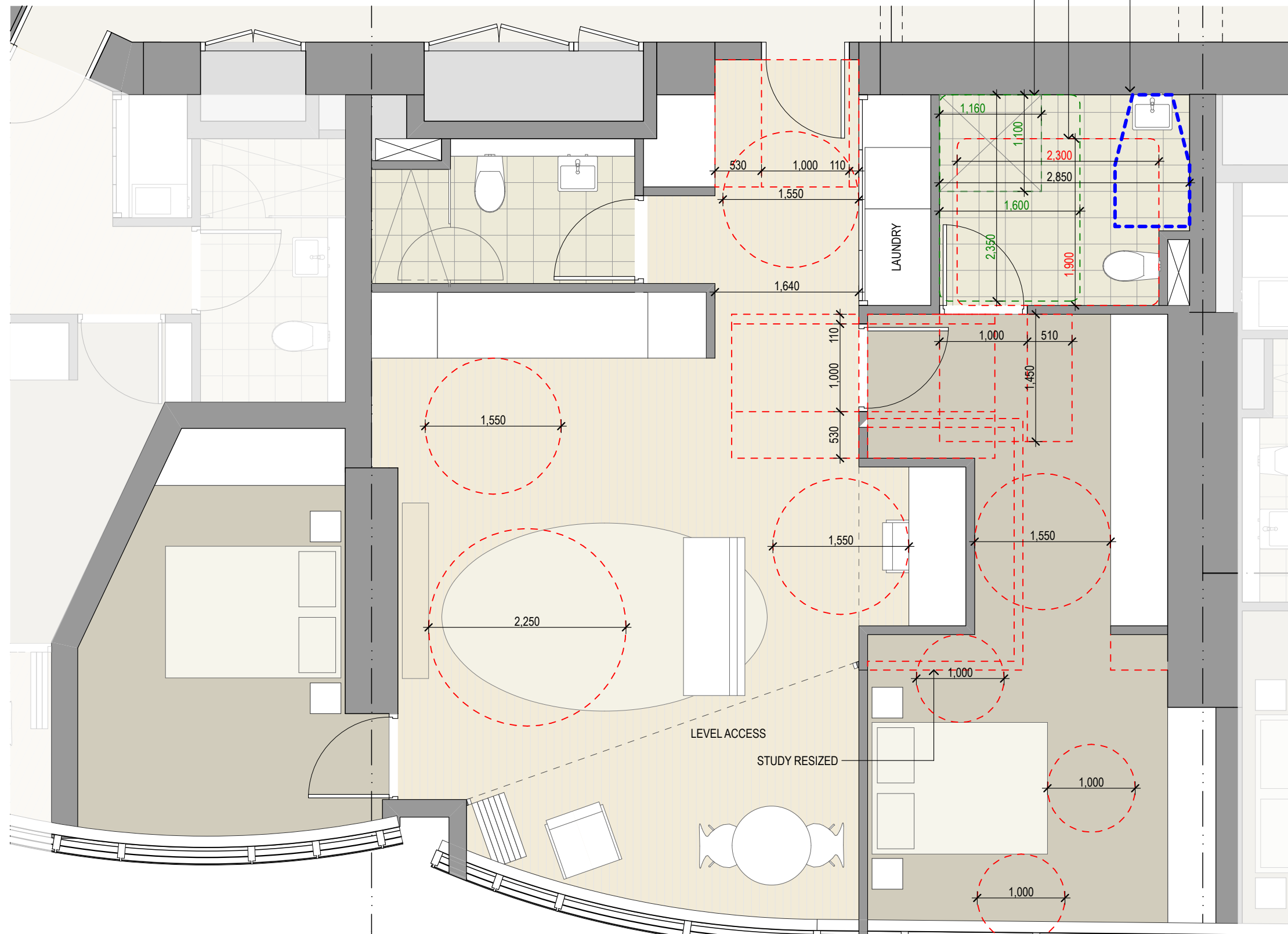


2 PLAN Post-adaptation 2 Bed L08
1:50



3 PLAN Pre-adaptation 2 Bed L08
1:50

2 BED ADAPTABLE APARTMENTS ON L22-24



4 PLAN Post-adaptation 2 Bed L08
1:50

0 1 2 5m

GENERAL NOTES

- ALL DIMENSIONS AND EXISTING CONDITIONS SHALL BE CHECKED AND VERIFIED BY THE CONTRACTOR BEFORE PROCEEDING WITH THE WORK
- ALL LEVELS RELATIVE TO 'AUSTRALIAN HEIGHT DATUM'
- DO NOT SCALE DRAWINGS
- USE FIGURED DIMENSIONS ONLY

legend

DRAWINGS ILLUSTRATE TYPICAL SCENARIOS FOR ADAPTABLE APARTMENTS: ADAPTABLE APARTMENTS AND UNIVERSAL DESIGN ALLOCATION AS PER DESIGN REPORT AND STATEMENT.

Average star rating **8.0**

NATIONWIDE HOUSE
Quality Standard

www.nathers.gov.au

Certificate Number: GAD1RM2336
Assessor Name: Nicholas Asha
Accreditation number: VIC/BDVH/61712
Certificate date: 2 Aug 2018
Dwelling address: 20-80 Pyrmont St, Pyrmont NSW 2009
www.nathers.gov.au

QR code linking to the certificate

DA01	1/9/17	DEVELOPMENT APPLICATION	NY	SMP
rev	date	name	by	chk

fjmt studio architecture interiors landscape urban community
sydney melbourne uk
Level 5, 70 King Street • +61 2 9251 7077 • fjmtstudio.com

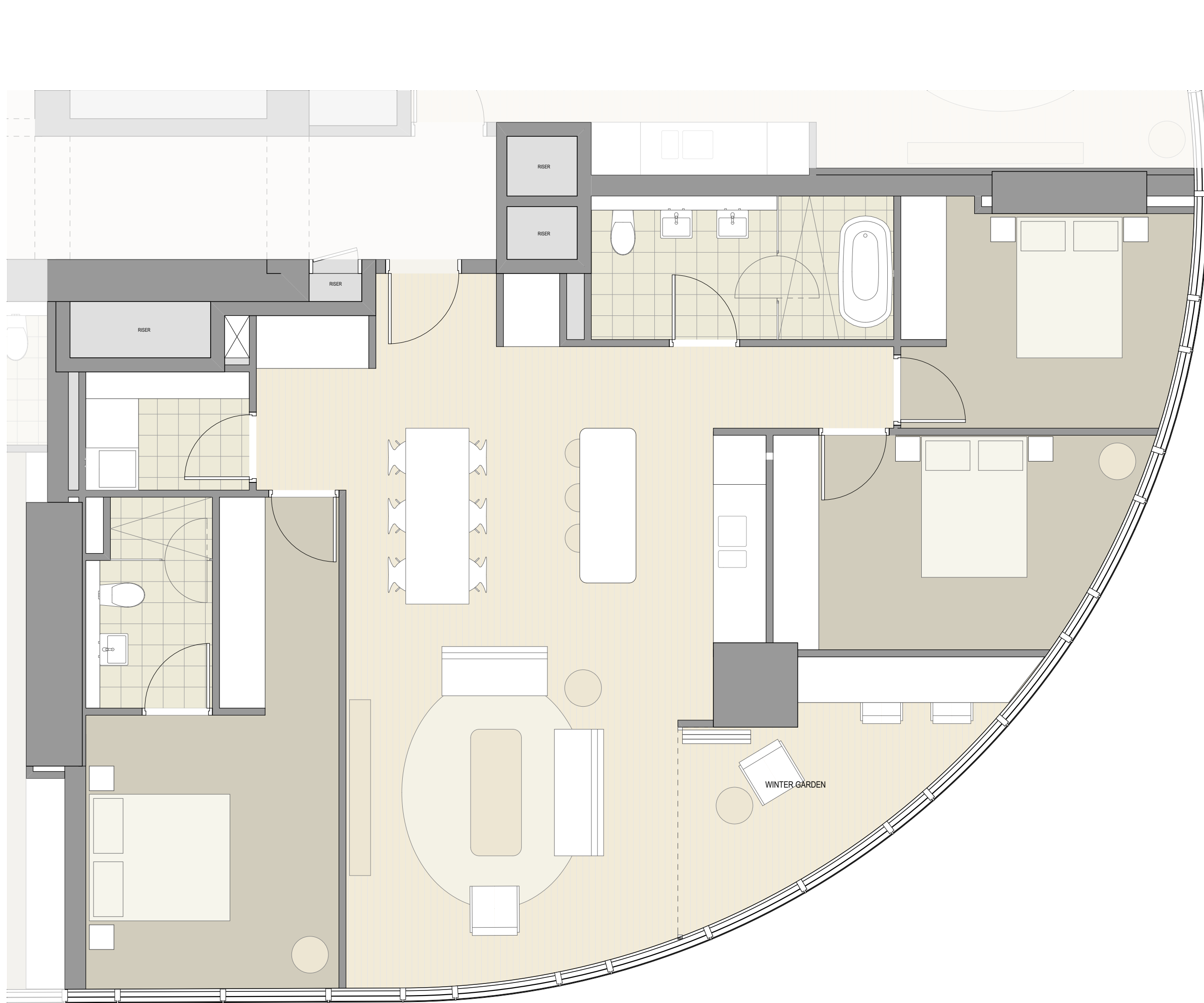
project
Modification 13
80 PYRMONT STREET
PYRMONT NSW 2009

title
General Arrangement Plans
Adaptable Apartments Typical 2 Bed

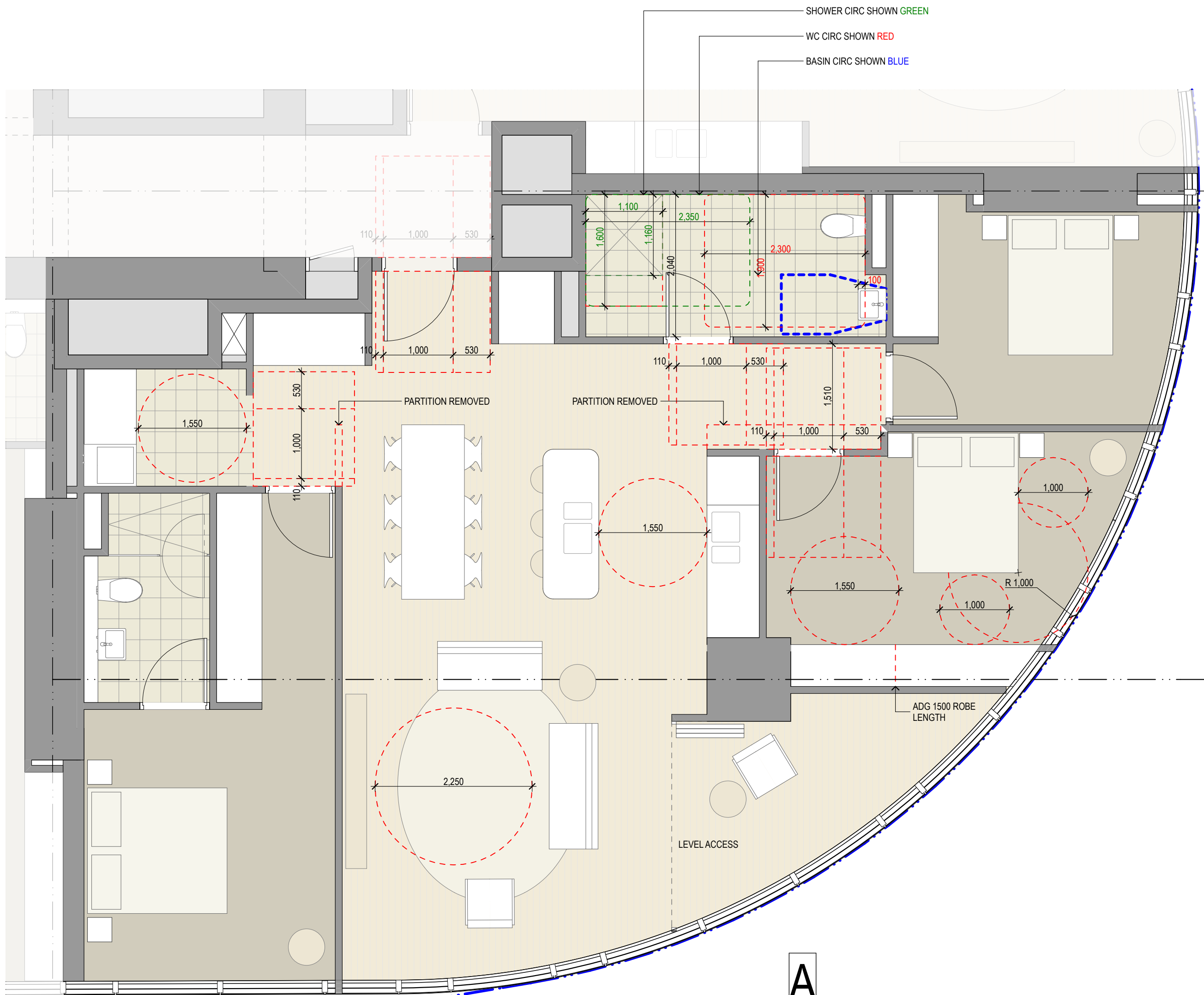
scale	1:100 @ A1	first issued	1/9/17
project code	sheet no.	revision	
SM13	AF2502	DA01	

- GENERAL NOTES**
- ALL DIMENSIONS AND EXISTING CONDITIONS SHALL BE
 - CHECKED AND VERIFIED BY THE CONTRACTOR BEFORE PROCEEDING WITH THE WORK
 - ALL LEVELS RELATIVE TO 'AUSTRALIAN HEIGHT DATUM'
 - DO NOT SCALE DRAWINGS
 - USE FIGURED DIMENSIONS ONLY

legend



1 PLAN Pre-adaptation 3 Bed L29
1:50



2 PLAN Post-adaptation 3 Bed L29
1:50

A

DRAWINGS ILLUSTRATE TYPICAL SCENARIOS FOR ADAPTABLE APARTMENTS. ADAPTABLE APARTMENTS AND UNIVERSAL DESIGN ALLOCATION AS PER DESIGN REPORT AND STATEMENT.

3 BED ADAPTABLE APARTMENTS ON L20, L21, L25-38



DA01	1/9/17	DEVELOPMENT APPLICATION	NY	SMP
rev	date	name	by	chk

fjmt studio architecture interiors landscape urban community
sydney melbourne uk
Level 5, 70 King Street t +61 2 9251 7077 w fjmtstudio.com



project
Modification 13
80 PYRMONT STREET
PYRMONT NSW 2009

title
General Arrangement Plans
Adaptable Apartments Typical 3 Bed

scale	1:100 @ A1	first issued	1/9/17
project code	sheet no.	revision	
SM13	AF2503	DA01	














ALL DIMENSIONS AND EXISTING CONDITIONS SHALL BE
CHECKED AND VERIFIED BY THE CONTRACTOR
BEFORE PROCEEDING WITH THE WORK

ALL LEVELS RELATIVE TO 'AUSTRALIAN HEIGHT DATUM'

DO NOT SCALE DRAWINGS.
USE FIGURED DIMENSIONS ONLY

BUILDING USE

	HOTEL
	HOTEL FACILITIES
	LOADING PLANT
	LIFTS, FIRE STAIRS, SERVICES
	ANCILLARY BOH
	CIRCULATION
	NEIGHBOURHOOD CENTRE
	RETAIL
	FOOD & BEVERAGE
	RESIDENTIAL
	RESIDENTIAL FACILITIES

SITE BOUNDARY

EXISTING BUILT FORM

EXISTING BUILT FORM

EXTEND OF MODIFICATION 13 WORK AS
SHOWN ON FJMT DOCUMENT. RIFER TO
DWP DRAWING FOR FULL EXTEND &
DEMARCATON OF MODIFICATION 13 WORK.

NOTE: SPATIAL PROVISION INCLUDED TO ACCOMMODATE AS1428.1, UPDATES AS REQUIRED AT DETAILED DESIGN



DA02	2/11/18	Response to Submissions	JRS	SMP
DA01	1/9/17	DEVELOPMENT APPLICATION	NY	SMP
rev	date	name	by	chk

fjmt studio architecture interiors landscape urban community
sydney melbourne uk
Level 5, 70 King Street t +61 2 9251 7077 w fjmtstudio.com

Modification 13
80 PYRMONT STREET
PYRMONT NSW 2009

title

Fit Out Plans
B2 FFE Floor Plan

scale	1:150 @ A1	first issued	1/9/17
-------	------------	--------------	--------






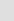

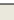


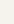
project code	sheet no.	revision
--------------	-----------	----------

SM13 **AF3000** **DA02**

fjmt

legend

BUILDING USE

- | | |
|---|------------------------------|
|  | HOTEL |
|  | HOTEL FACILITIES |
|  | LOADING, PLANT |
|  | LIFTS, FIRE STAIRS, SERVICES |
|  | ANCILLARY, BOH |
|  | CIRCULATION |
|  | NEIGHBOURHOOD CENTRE |
|  | RETAIL |
|  | FOOD & BEVERAGE |
|  | RESIDENTIAL |
|  | RESIDENTIAL FACILITIES |

SITE BOUNDARY

EXISTING BUILT FORM

EXISTING BUILT FORM

EXTENT OF CAR STACKER BELOW

EXTEND OF MODIFICATION 13 WORK AS
SHOWN ON FJMT DOCUMENT. RIFER TO
DWP DRAWING FOR FULL EXTEND &
DEMARCATON OF MODIFICATION 13 WORK.

NOTE: SPATIAL PROVISION INCLUDED TO ACCOMMODATE AS1428.1, UPDATES AS REQUIRED AT DETAILED DESIGN



Certificate Number: **GAD1RM2336**
 Assessor Name: **Nicholas Asha**
 Accreditation number: **VIC/BD/AV/16/1712**
 Certificate date: **2 Aug 2018**
 Dwelling address: **20-80 Pyrmont St,
 Pyrmont NSW 2009**
www.nathers.gov.au



DA02	2/11/18	Response to Submissions	JRS	SMP
DA01	1/9/17	DEVELOPMENT APPLICATION	NY	SMP
rev	date	name	by	chk

fjmt studio architecture interiors landscape urban community
sydney melbourne uk
Level 5, 70 King Street t +61 2 9261 7077 w fjmtstudio.com

project

Modification 13
80 PYRMONT STREET
PYRMONT NSW 2009

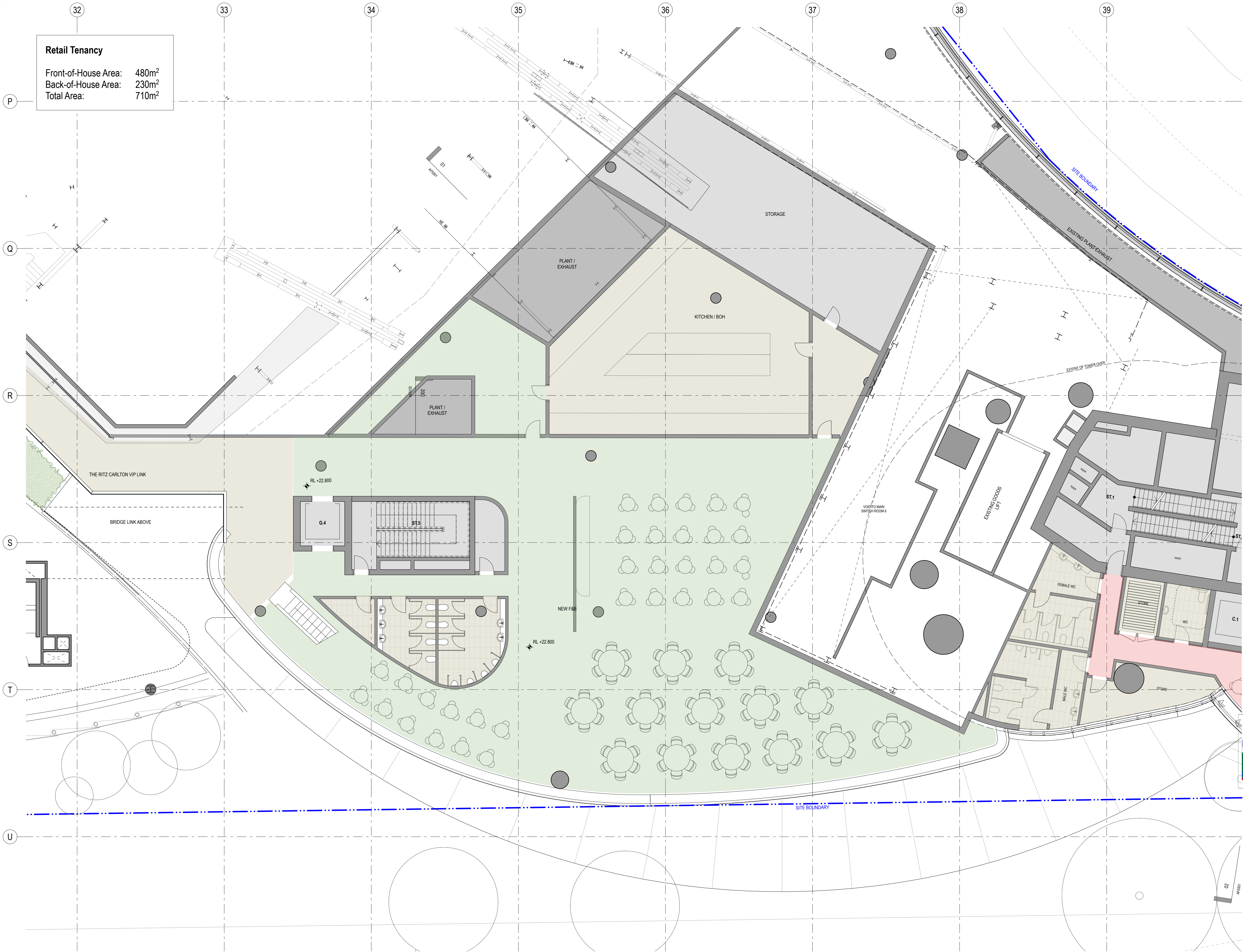
Fit Out Plans

Level 00 FFE Ground Floor Plan

scale	1:150 @ A1	first issued	1/9/17
-------	------------	--------------	--------

project code	sheet no.	revision
--------------	-----------	----------

SM13 AF3001 DA02



Retail Tenancy

Front-of-House Area: 480m²
Back-of-House Area: 230m²
Total Area: 710m²

GENERAL NOTES

- ALL DIMENSIONS AND EXISTING CONDITIONS SHALL BE CHECKED AND VERIFIED BY THE CONTRACTOR BEFORE PROCEEDING WITH THE WORK
- ALL LEVELS RELATIVE TO 'AUSTRALIAN HEIGHT DATUM'
- DO NOT SCALE DRAWINGS
- USE FIGURED DIMENSIONS ONLY

- Legend
- BUILDING USE**
- HOTEL
 - HOTEL FACILITIES
 - LOADING, PLANT
 - LIFTS, FIRE STAIRS, SERVICES
 - ANCILLARY, BOH
 - CIRCULATION
 - NEIGHBOURHOOD CENTRE
 - RETAIL
 - FOOD & BEVERAGE
 - RESIDENTIAL
 - RESIDENTIAL FACILITIES

SITE BOUNDARY

EXISTING BUILT FORM

EXISTING BUILT FORM

EXTENT OF CAR STACKER BELOW

EXTEND OF MODIFICATION 13 WORK AS SHOWN ON FURTHER DOCUMENT REFER TO DWP DRAWING FOR FULL EXTEND & DEMARCATION OF MODIFICATION 13 WORK.

NOTE: SPATIAL PROVISION INCLUDED TO ACCOMMODATE AS1428.1, UPDATES AS REQUIRED AT DETAILED DESIGN

8.0
Average star rating
NATIONWIDE HOUSE
Quality Standard
www.nathers.gov.au

Certificate Number: GAD1RM2336
Assessor Name: Nicholas Asha
Accreditation number: VIC/BDAYH161712
Certificate date: 2 Aug 2018
Dwelling address: 20-80 Pyrmont St, Pyrmont NSW 2009
www.nathers.gov.au

QR Code:

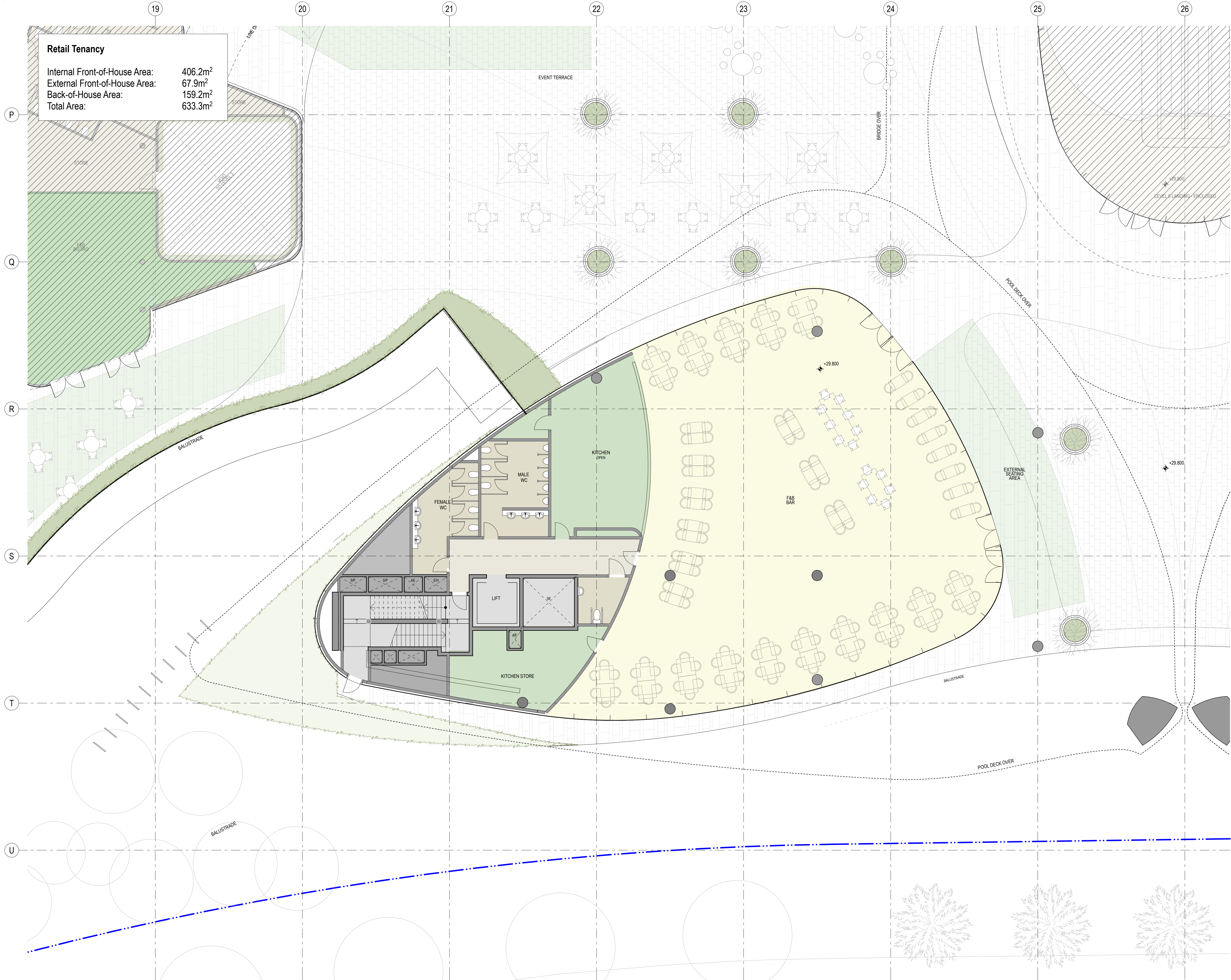
DA01	2/11/18	Response to Submissions	JRS	SMP
rev	date	name	by	chk

fjmt studio architecture interiors landscape urban community
sydney melbourne uk
Level 5, 70 King Street E +61 2 9251 7077 fjmtstudio.com

project
Modification 13
80 PYRMONT STREET
PYRMONT NSW 2009

title
Fit Out Plans
Level 03 FFE Expansion Sovereign Room Link

scale 1:150 @ A1 first issued 2/11/18
project code sheet no. revision
SM13 AF3002 DA01



GENERAL NOTES

- ALL DIMENSIONS AND EXISTING CONDITIONS SHALL BE CHECKED AND VERIFIED BY THE CONTRACTOR BEFORE PROCEEDING WITH THE WORK
- ALL LEVELS RELATIVE TO 'AUSTRALIAN HEIGHT DATUM'
- DO NOT SCALE DRAWINGS
- USE FIGURED DIMENSIONS ONLY

- Legend
- BUILDING USE**
- HOTEL
 - HOTEL FACILITIES
 - LOADING, PLANT
 - LIFTS, FIRE STAIRS, SERVICES
 - ANCILLARY, BOH
 - CIRCULATION
 - NEIGHBOURHOOD CENTRE
 - RETAIL
 - FOOD & BEVERAGE
 - RESIDENTIAL
 - RESIDENTIAL FACILITIES

SITE BOUNDARY

EXISTING BUILT FORM

EXTENT OF CAR STACKER BELOW

EXTEND OF MODIFICATION 13 WORK AS SHOWN ON FJMT DOCUMENT REFER TO DWP DRAWING FOR FULL EXTEND & DEMARCATION OF MODIFICATION 13 WORK.

NOTE: SPATIAL PROVISION INCLUDED TO ACCOMMODATE AS1428.1. UPDATES AS REQUIRED AT DETAILED DESIGN

8.0
Average star rating
NATIONWIDE HOUSE
Quality Standard 2018
www.nathers.gov.au

Certificate Number: GAD1RM2336
Assessor Name: Nicholas Asha
Accreditation number: VIC/BDAY161712
Certificate date: 2 Aug 2018
Dwelling address: 20-80 Pyrmont St, Pyrmont NSW 2009
www.nathers.gov.au

QR Code
https://www.fjmt.com.au/Q/GAD1RM2336/2018

DA01	2/11/18	Response to Submissions	JRS	SMP
rev	date	name	by	chk

fjmt studio architecture interiors landscape urban community
sydney melbourne uk
Level 5, 70 King Street E +61 2 9251 7077 www.fjmtstudio.com

project
Modification 13
80 PYRMONT STREET
PYRMONT NSW 2009

title
Fit Out Plans
Level 05 FFE Sky Terrace

scale	1:100 @ A1	first issued	2/11/18
project code	sheet no.	revision	
SM13	AF3003	DA01	