

LEVEL 07 Pool Deck
1:300

LEVEL 07 Pool Deck
1:300

scale	1:300 @ A1	first issued	1/9/17
project code	sheet no.	revision	
SM13	AF1006	DA02	



GENERAL NOTES

- ALL DIMENSIONS AND EXISTING CONDITIONS SHALL BE CHECKED AND VERIFIED BY THE CONTRACTOR BEFORE PROCEEDING WITH THE WORK
- ALL LEVELS RELATIVE TO 'AUSTRALIAN HEIGHT DATUM'
- DO NOT SCALE DRAWINGS
- USE FIGURED DIMENSIONS ONLY

Legend

BUILDING USE

- HOTEL
- HOTEL FACILITIES
- LOADING, PLANT
- LIFTS, FIRE STAIRS, SERVICES
- ANCILLARY, BOH
- CIRCULATION
- NEIGHBOURHOOD CENTRE
- RETAIL
- FOOD & BEVERAGE
- RESIDENTIAL
- RESIDENTIAL FACILITIES

SITE BOUNDARY

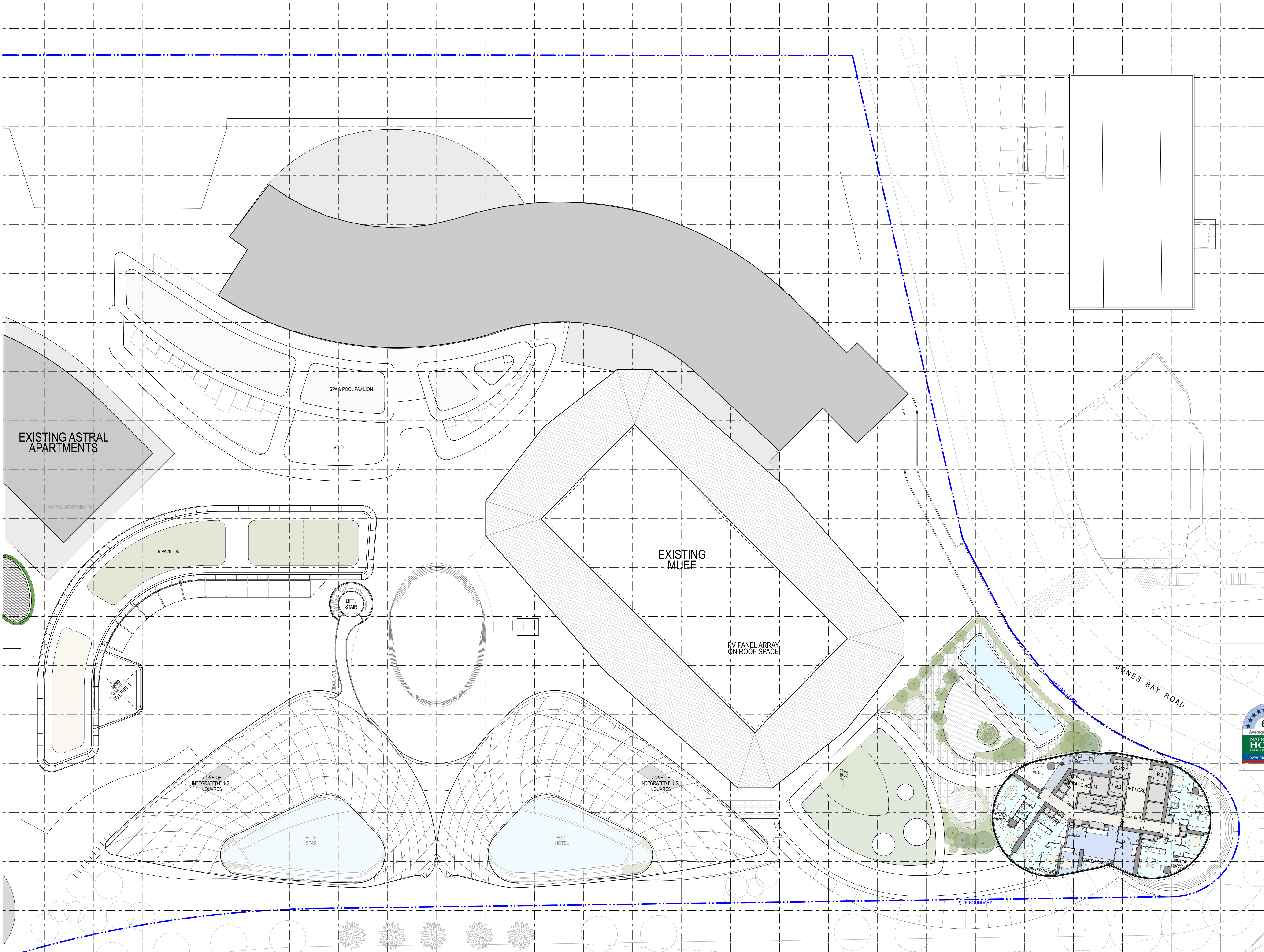
EXISTING BUILT FORM

EXISTING BUILT FORM

EXTENT OF CAR STACKER BELOW

EXTEND OF MODIFICATION 13 WORK AS SHOWN ON FJMT DOCUMENT RIFER TO DWP DRAWING FOR FULL EXTEND & DEMARCATION OF MODIFICATION 13 WORK.

NOTE: SPATIAL PROVISION INCLUDED TO ACCOMMODATE AS1428.1, UPDATES AS REQUIRED AT DETAILED DESIGN



8.0

Average star rating

NATIONWIDE HOUSE

Quality Standard

www.nathers.gov.au

Certificate Number: GAD1RM2336

Assessor Name: Nicholas Asha

Accreditation number: VIC/BDAY161712

Certificate date: 2 Aug 2018

Dwelling address: 20-80 Pyrmont St, Pyrmont NSW 2009

www.nathers.gov.au

QR Code

https://www.fjmt.com.au/0

GAD1RM2336

For Information

DA02	2/11/18	Response to Submissions	JRS	SMP
DA01	1/9/17	DEVELOPMENT APPLICATION	NY	SMP
rev	date	name	by	chk

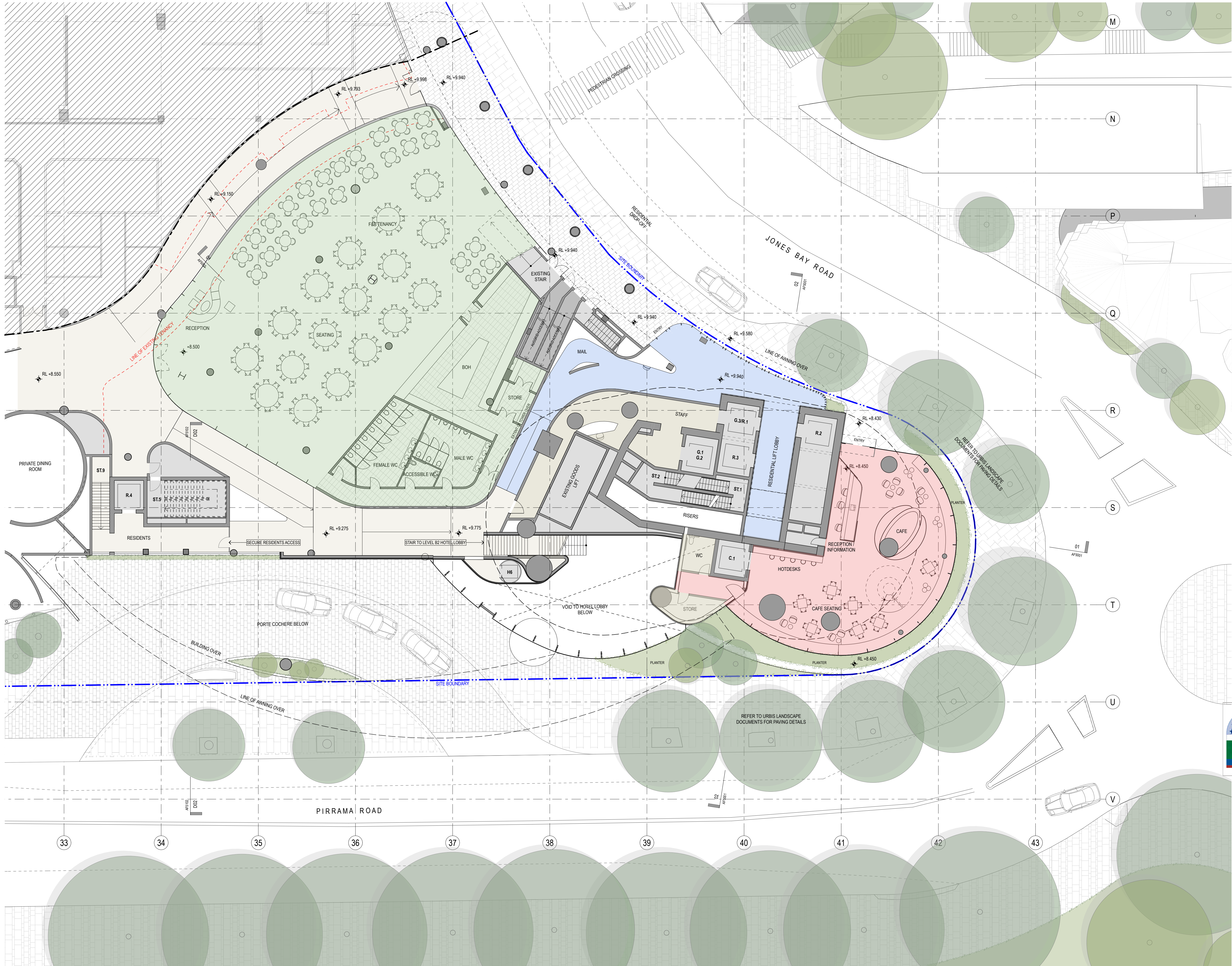
fjmt studio architecture interiors landscape urban community
sydney melbourne uk
Level 5, 70 King Street E • 61 2 9251 7077 • fjmtstudio.com



project
Modification 13
80 PYRMONT STREET
PYRMONT NSW 2009

title
General Arrangement Plans
Level 08 Pool Terrace Roof Plan

scale	1:300 @ A1	first issued	1/9/17
project code	sheet no.	revision	
SM13	AF1008	DA02	



GENERAL NOTES

- ALL DIMENSIONS AND EXISTING CONDITIONS SHALL BE CHECKED AND VERIFIED BY THE CONTRACTOR BEFORE PROCEEDING WITH THE WORK
- ALL LEVELS RELATIVE TO 'AUSTRALIAN HEIGHT DATUM'
- DO NOT SCALE DRAWINGS
- USE FIGURED DIMENSIONS ONLY

- Legend
- BUILDING USE**
- HOTEL
 - HOTEL FACILITIES
 - LOADING, PLANT
 - LIFTS, FIRE STAIRS, SERVICES
 - ANCILLARY, BOH
 - CIRCULATION
 - NEIGHBOURHOOD CENTRE
 - RETAIL
 - FOOD & BEVERAGE
 - RESIDENTIAL
 - RESIDENTIAL FACILITIES

SITE BOUNDARY

EXISTING BUILT FORM

EXISTING BUILT FORM

EXTENT OF CAR STACKER BELOW

EXTEND OF MODIFICATION 13 WORK AS SHOWN ON FMT DOCUMENT REFER TO DWP DRAWING FOR FULL EXTEND & DEMARCATION OF MODIFICATION 13 WORK.

NOTE: SPATIAL PROVISION INCLUDED TO ACCOMMODATE AS1428.1, UPDATES AS REQUIRED AT DETAILED DESIGN

8.0
Average star rating
NATIONWIDE HOUSE
Quality Standard
www.nathers.gov.au

Certificate Number: GAD1RM2336
Assessor Name: Nicholas Asha
Accreditation number: VIC/BDAY161712
Certificate date: 2 Aug 2018
Dwelling address: 20-80 Pyrmont St, Pyrmont NSW 2009
www.nathers.gov.au

REFER TO URBIS LANDSCAPE DOCUMENTS FOR PAVING DETAILS

DA02	2/11/18	Response to Submissions	JRS	SMP
DA01	1/9/17	DEVELOPMENT APPLICATION	NY	SMP
rev	date	name	by	chk

fjmt studio architecture interiors landscape urban community
sydney melbourne uk
Level 5, 70 King Street E +61 2 9251 7077 fjmtstudio.com

project
Modification 13
80 PYRMONT STREET
PYRMONT NSW 2009

title
General Arrangement Plans
Level 00 Residential Entry Ground Floor Plan

scale 1:150 @ A1 **first issued** 1/9/17

project code **SM13** **sheet no.** **AF2000** **revision** **DA02**