

Porte Cochere Green Wall

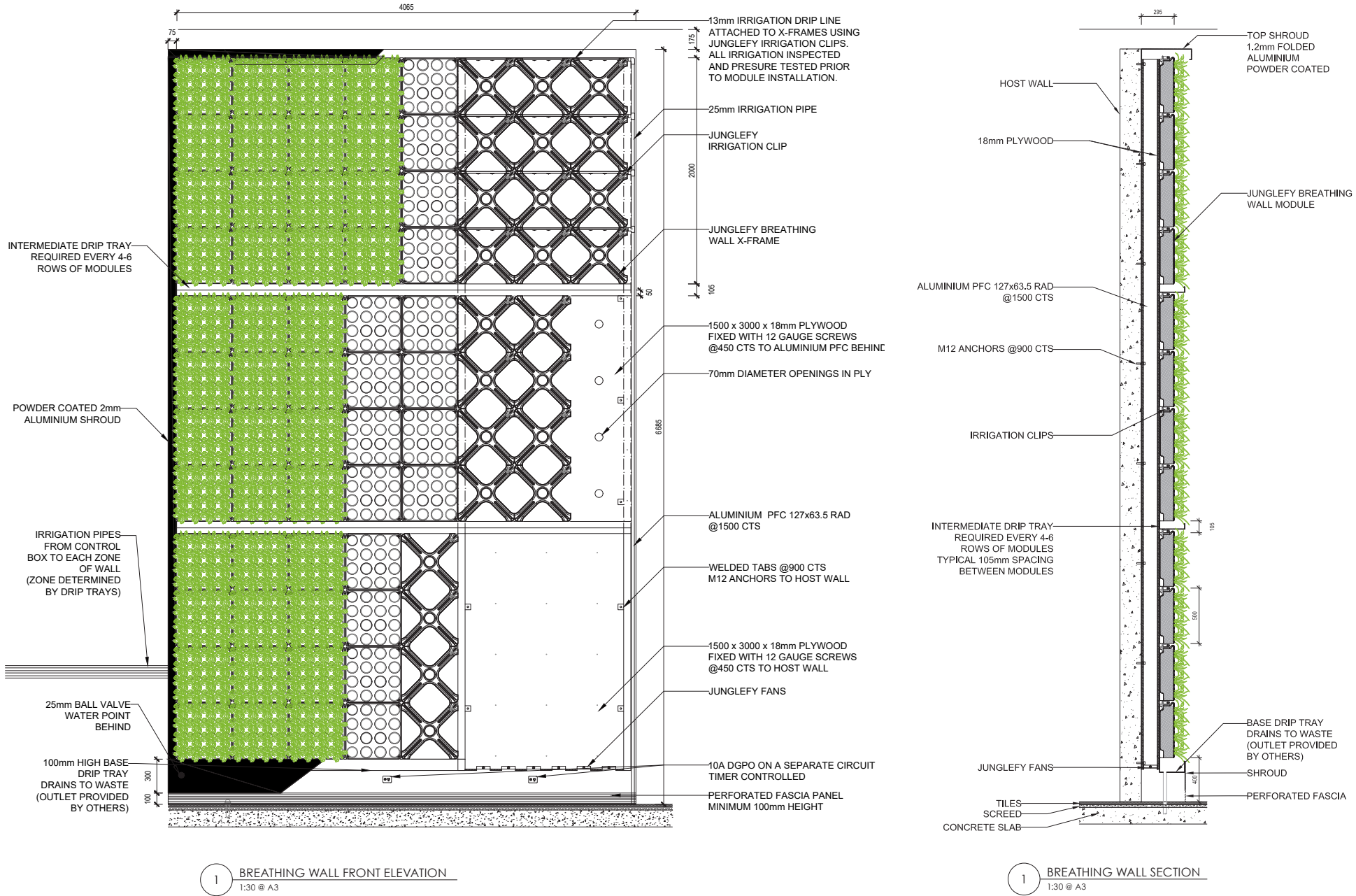
City of Sydney raised to following concern in regard to the 'Green Wall' as proposed for the hotel porte-cochere:

- An extensive green wall is proposed under the building and will be in complete shade. Further design details are required to assess this proposed green wall.

In response to the comments as above Junglefy have been engaged to provide recommendations and advice in regard to achieving the design intent as contained within the Architectural Design Statement. This advice is included in the Supplementary Landscape Report. Detail drawings as prepared by Junglefy are reproduced on the following page.



Proposed Green wall within the Ritz Carlton Porte Cochere



Proposed Breathing Wall System by Junglefy



4.7 Signage - Tower

Department of Planning item:  
"Consider reducing the size of the roof-level signage on the tower having regard to the proportions of the roof and other comparable roof-top signage approvals within Darling Harbour"

The proposed sky signage has been reduced from 8.2m diameter to 7.9m diameter to ensure it is appropriately sized with consideration of other sky signage within Darling Harbour.

Comparable roof-top signage within Darling Harbour and the surrounds is the ICC Sofitel, Crown Casino (One Sydney Harbour), Hyatt Regency Hotel and One International Tower, Barangaroo. Approximate dimensions are provided in lieu of exact signage drawings (where noted), and areas for signage zones comparison are calculated.

Crown Casino will have a top building RL of +275.000 (AHD) and two roof-top building signs; one facing east and one west with dimensions of 6.5m high by 7.9m wide giving a total signage area of **51.35m2/ sign**. The ratio of tower height to signage height is = **42:1**

The Hyatt Regency has a single building sign facing Darling Harbour on the central hotel volume. The signage is at RL +61.000m (AHD) with (approx) dimensions of 4m high by 9m wide and an area of **36m2**. The ratio of tower height to signage height is = **15:1**

The ICC Sofitel has a building height of RL +133.550m (AHD) with signage height of approx 2.7m high by approx 25m wide and a total signage area of **70m2**. The ratio of tower height to signage height is = **49:1**

One International Tower has a building height of +205.000m (AHD) and approximate signage dimensions of 8m high by 9m wide giving an area of **72m2**.The ratio of tower height to signage height is = **25:1**

The dimensions of the Tower signage has been reduced since formal lodgement from 8.2m to 7.9m diameter, giving an area of **49m2**. At RL +237.000m (AHD) this provides ration of tower height to signage height of **30:1**.

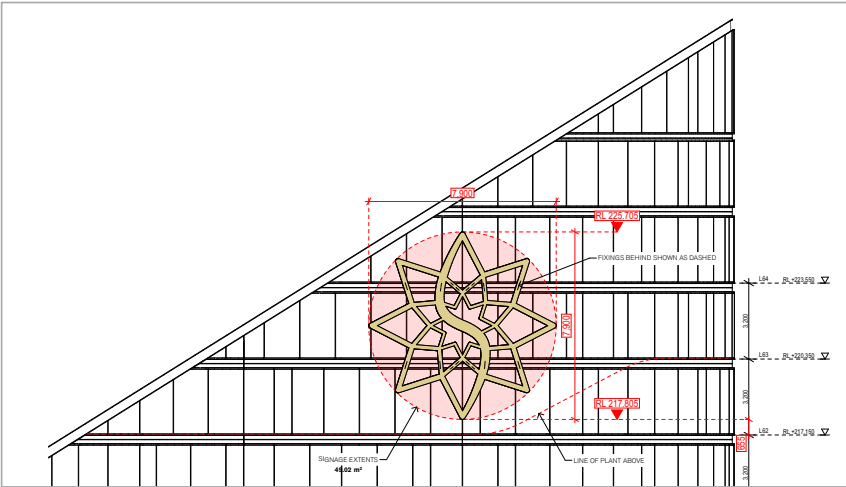
As a comparison of signage area, The Star is the second smallest building identification sign at the second highest RL. Others such as ICC Sofitel and One International Tower, Barangaroo are both larger in area and closer to ground level.

As a ratio of overall tower height to signage height the Star sits in the median position at 30:1 with Crown and ICC Sofitel ratios smaller at 42:1 and 49:1 respectively and both One International Tower (25:1) or Hyatt Regency (15:1) being larger.

In conclusion the proposed building identification signage has been reduced to be appropriately scaled when compared to other roof-top signage approvals within and around Darling Harbour.



Star MOD 13 - Photomontage (above), Signage zone (below)



Crown Casino - Photomontage (above), Signage zone (below)

