

Darling Walk

Interpretive Plan

Stage 3

Prepared by Deuce Design
for Abbey Johnson at Lend Lease
30 The Bond, 30 Hickson Road,
Millers Point NSW 2000 Australia
Telephone 02 9236 6970
Facsimile 02 9237 5051

Contents

Introduction Darling Walk Project	3
Interpretation	5
Key themes for Interpretation	6
Site Specific Interpretation Map	7
1. Civic Connector	9
2. Exploratory Forest Play	11
3. Pumping station within Playground	13
4. Public Foyers	14



Project// Interpretive Strategy - Stage 3	Client//Lend Lease	Issue//02/07/09	Page//02
Title// Darling Walk	Job No//2921	Scale//NA	Rev// B

Introduction

In April 2008, Bovis Lend Lease requested a draft interpretation strategy from Deuce Design to produce an Interpretation Strategy for the Darling Walk Project.

The strategy has been updated to relate to the developed public domain design that is to be issued for planning approval in June 2009.

The Darling Walk Draft Interpretive Plan is to be read in conjunction with the EA submission drawings for the public domain prepared by ASPECT studios.

This strategy:

- Explain the relevance of interpretation for Darling Walk and its context within the greater CBD area;
- Identify location-specific possibilities within the Darling Walk area;
- Identify the core themes to be communicated about the site’s history and its existing natural environment;
- Illustrate examples of interpretation within international and national examples; and
- Recommend interpretive media and methods.

The interpretative program will play an important role in Darling Walk’s preservation, management and enjoyment.

The interpretation aims to:

- Encourage locals and tourists to use and enjoy the public domain areas;
- Instill understanding and appreciation of the site and the history it represents; and

The recommendations in the strategy are based on various workshops with Aspect Studios, Landscape Statement (Aspect Studios), the Casey & Lowe archaeology and heritage report and a workshop held in conjunction with Sydney Harbour Foreshore Authority, Aspect and Lendlease (June 2008).



Project// Interpretive Strategy - Stage 3	Client//Lend Lease	Issue//02/07/09	Page//03
Title// Darling Walk	Job No//2921	Scale//NA	Rev// B

Why Interpret?

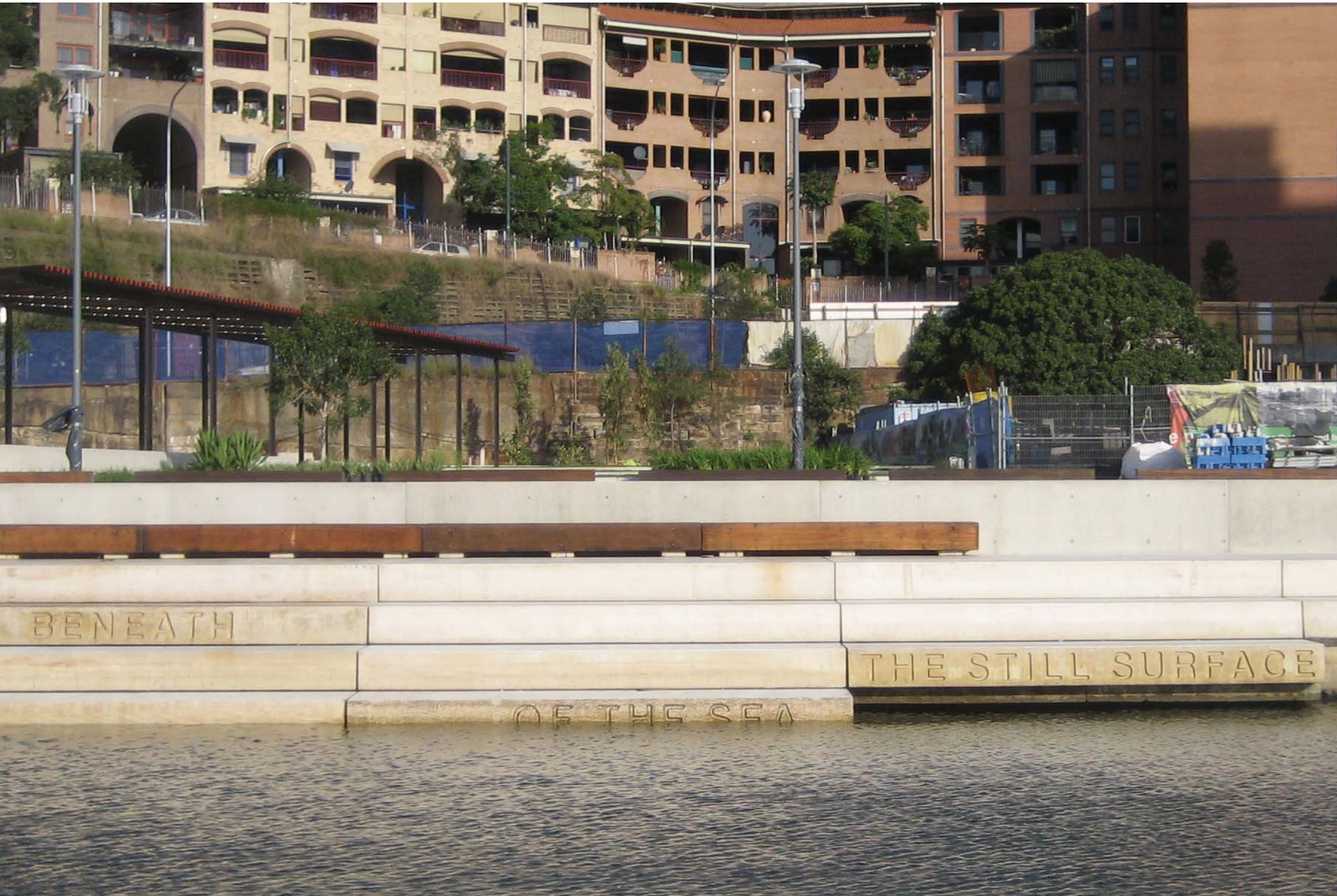
The significance of some heritage items is easy to understand; but for others the values are not obvious and require interpretation. Many items have values that are better understood through interpretation.

Interpretation media including activities and events, signs, publications, audio, video, artworks and trails, can enhance understanding and enjoyment by appealing to different levels of experience and knowledge, as well as to different learning styles.

Interpretation can strengthen and sustain the relationships between the community and heritage.

Heritage Interpretation Policy
Heritage Council NSW, 2005





The above image shows 'Beneath the still surface of the sea' in Pyrmont, Sydney (Water Police site). It is a collaborative piece by Aspect Studios and Deuce Design and is an example of interpretation using cast concrete and typography.

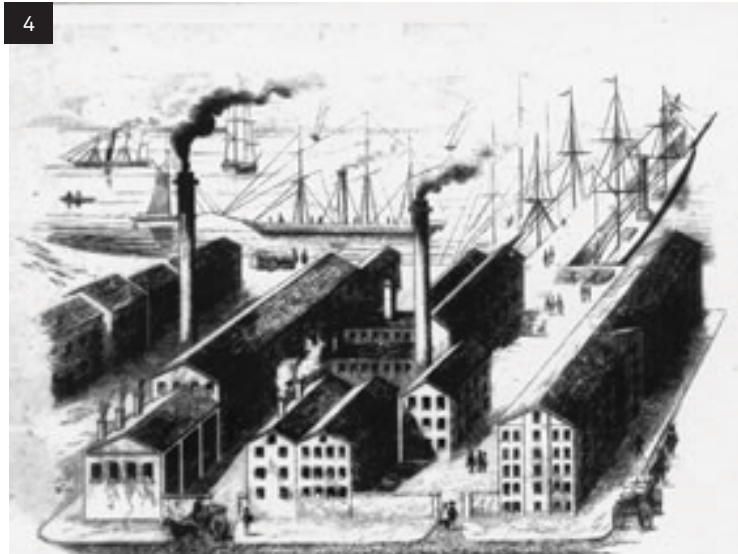
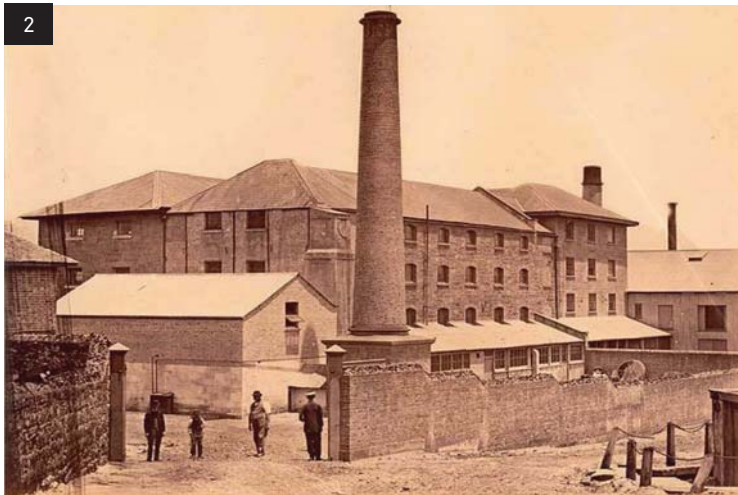
Darling Walk Project Interpretation

A series of interpretive themes and sites for the Darling Walk are suggested herein, all of which make links throughout the site and offer scope for sub-themes to be explored in more detail at specific sites.

Interpretation is the technical term used to describe the process of explaining the significance of heritage, environment, culture and present day activities to local residents and visitors. It is communication designed to educate, entertain and promote interest in a subject or place and is provided at or near the site being visited.

Each individual piece of the interpretive themes and methology for the Darling Walk Project communicates or supports one or more of these strategic themes.





1. Managers and workers at P.N. Russell & Co. (State Library of NSW)
 2. Barker's Mill in c1870. (State Library of NSW)
 3. Inspecting of works (Ian Bowie, USYD)
 4. Perspective drawing of Sussex Street Engine Works and Russell's Wharf (Ian Bowie, USYD)
 5. Russell's Wharf (Ian Bowie, USYD)
 6. Barker's Mill (Sate Library of NSW)

Key themes for Interpretation

Many of the following historical milestones and periods could be interpreted thematically as:

1. Aboriginal Heritage and indigenous occupation

2. The 'Common Worker'
 From the 1820s, Darling Harbour was the home and work place for 100s of 'common workers'. The dramatically altered streetscape and surrounds was once a thriving, bustling, crowded area of wharfage, finger piers, warehouses, a myriad of premises involved in industry, maritime trade and commerce, and crowded communities of workers, who, by necessity, had to live near their workplaces.

3. Darling Harbour and the immediate surrounds are rich and layered with a dense industrial history. The rapid development of the area, from the 1820s, included the emergence of significant industry, manufacturers and factories. These include, but are not limited to:

- Barker's Mill
- Anchor Mills
- Steam Sawmill
- Sugar Mill
- Anchor Flour Mill
- Builders Yards
- Peter Nicol Russell

4. Environmental Heritage: promote an understanding of the landscape character of Darling Harbour prior to development.

5. Darling Harbour Development: a place for the people. Darling Harbor continued to evolve with the Darling Walk/Cockle Bay development, which was completed in 1999. The development provided a critical link between the city and to Cockle Bay and injected new energy and activity into the precinct.

Our research and consultation suggests four potential zones for interpretation. They are to be located at:

- 1.**
Civic Connector
- 2.**
Exploratory Forest Play
- 3.**
Pumping Station within Playground
- 4.**
Public Foyers

Themes of interpretation express ideas, rather than the subject of the interpretation. The themes may never appear in words, but should guide the choice of the facts to be communicated. They represent the thoughts that should be left in the mind of the audience.





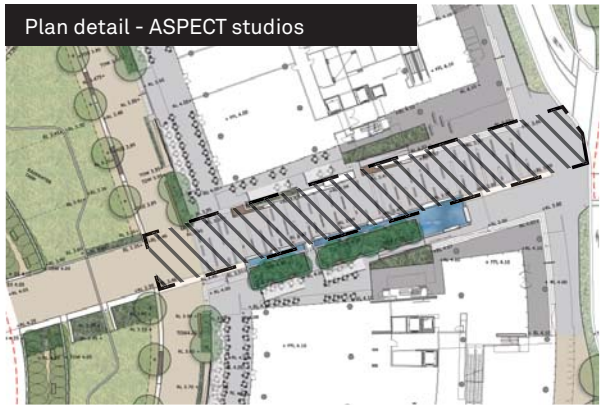
1. Civic Connector

The Civic Connector has potential to perform as a main gathering point and thoroughfare for Darling Walk. Its location provides an opportunity for various methods of interpretation and messages.

The Civic Connector has the potential to convey the following themes:

- Symbolic thoroughfare activating and reconnecting Darling Harbour with the Central Business District;
- Represent the rich and diverse history of trade and industry and;
- A ‘place for the people’
- Refer to the shoreline prior to development

Plan detail - ASPECT studios





1. Civic Connector

There are a variety of interpretive methods to reinforce the proposed themes for the Civic Connector. Some of these could include the following options:

- A sculptural water feature where water flows over a textured surface of text and graphics. The three dimensional graphics illustrate words, names, dates, messages and simple typography relating to the history of the area

Methods/Fabrications

- Pre cast sculptural element
- water

- 1. Ground lettering
- 2. Precast element - Former Water Police
- 3. Metal lettering
- 4. Concrete lettering
- 5-9. Cast concrete sculptural elements - Former Water Police



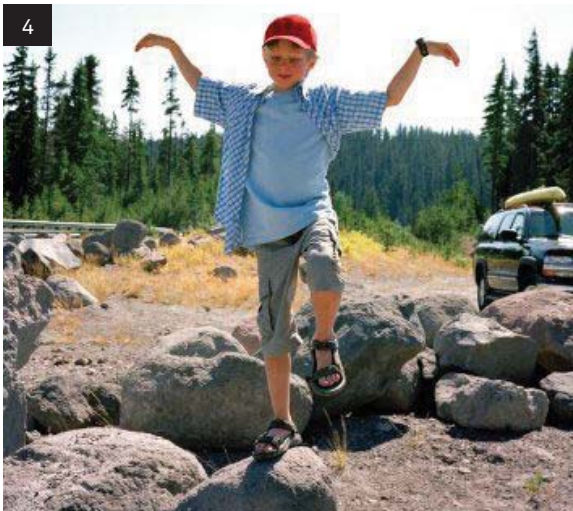
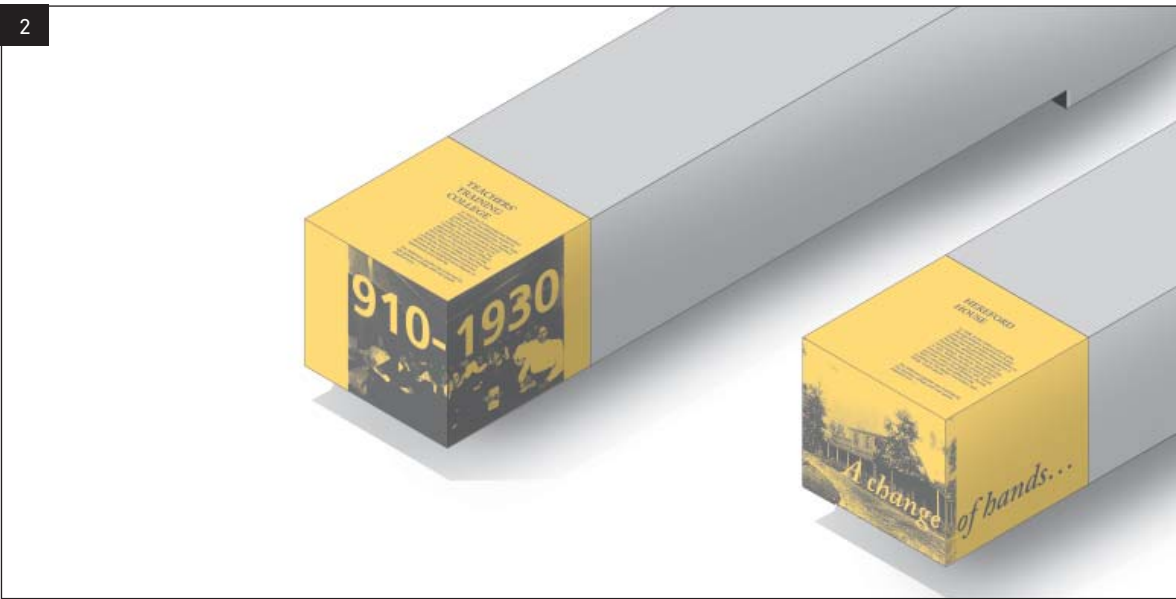
2. Exploratory Forest Play

The Exploratory Forest Play area presents itself as an interactive area for children. It is a dynamic play zone intended to encourage and facilitate movement, action, net play and exploration. Its location provides an opportunity for various methods of interpretation and messages.

The Exploratory Forest Play has the potential to convey the following themes:

- Pieces of former Darling Harbour buildings (sandstone blocks) incorporated into the play area
- Symbols and icons of the past integrated into sandstone blocks
- Names of former streets and traders integrated into sandstone blocks





- 1. Sandblasted or pre cast stone
- 2. Seating elements with vitreous panels - Foley Park
- 3. SHFA supply of salvaged stone
- 4. Stone setting as playground
- 5. SHFA supply of salvaged stone
- 6. Stone setting as playground

2. Exploratory Forest Play

Materials/Fabrication:

- Sandstone blocks for jumping, climbing and crawling
- Elements or text embedded in sandstone elements
- Vitrified enamel signage elements



3. Pumping station within Playground

The playground 'pumping station' play area works on two different levels to appeal to and educate children.

On the one hand it performs as water play to engage children and to encourage fun. Whilst on the other, it performs as a more abstract 'how things work' and 'cause and effect' mechanism.

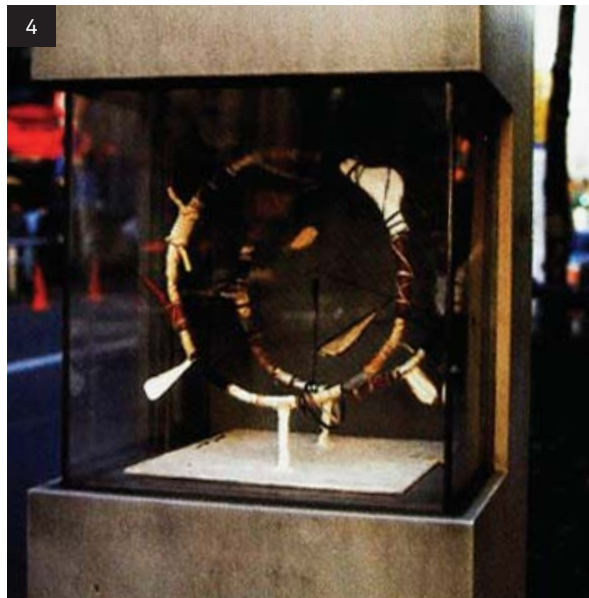
The Playground has the potential to convey the following themes:

- How things work (metaphor for industry and the mechanics of working factories);
- Cause and Effect;
- Environmental Issues, particularly the course 'water' travels and the value if its importance;
- Sustainability;
- Water evaporation, condensation and;
- Water as an energy source
- Former uses of water in Darling Harbour during it's industrial period

MATERIALS/FABRICATION:

- Vitrified enamel signage element

1-6. Richter catalogue of water play elements



4. Public Foyers

The Public Foyer areas both intersect with the Pedestrian Boulevard and are located at the entry of the Children's Theatre as well as the Public Car Park.

The foyers have the potential to display found archeological relics and could reference the themes of:

- The life of 'the common worker'
- Technology in past and present society

These themes could be conveyed through a variety of interpretive methods.

These could include but not be limited to:

- Time capsules or trails of artifacts exhibiting both domestic and industrial remnants and found objects
- Museum style showcases or recessed objects under glass, embedded within walls.

1. Sculpture signs of Shuibuya Ward
2. Found Objects (Deuce Library)
3. Sculpture signs of Shuibuya Ward
4. Shoichi Kishi
5. Sculpture signs of Shuibuya Ward