

# PART LOT 112 DP 1073791 LYONS ROAD SAWTELL

## CONCEPT DETAILS FOR PART 3A PROJECT APPLICATION

### DRAWING INDEX

SHEET No	DETAILS	SHEET NO	DETAILS
101	COVER	112	CONCEPT WATER RETICULATION
102	EXISTING SITE	113	FIRE APZ
103	TOTAL SITE CONCEPT	114	CONCEPT SEDIMENT AND EROSION
104	CONCEPT LAYOUT	115	CONCEPT CONSTRUCTION STAGING
105	ALLOTMENT DIMENSION DETAILS	116	CONCEPT EARTHWORKS STAGING
106	CONCEPT EARTHWORKS	117	TRAFFIC DETAILS
107	CONCEPT ROAD LAYOUT	118	CONCEPT CULVERT
108	CONCEPT ROAD DETAILS SHEET 1	119	PROPOSED PUBLIC RESERVE
109	CONCEPT ROAD DETAILS SHEET 2	120	PROPOSED NEIGHBOURHOOD PARK
110	CONCEPT STORMWATER	121	ARCHEOLOGICAL TOPSOIL PLACEMENT
111	CONCEPT WSUD BASIN LAYOUTS	122	ZONING PLAN
	CONCEPT SEWER RETICULATION		

#### GEOFF SLATTERY AND PARTNERS PTY LTD CIVIL AND STRUCTURAL ENGINEERS

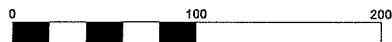
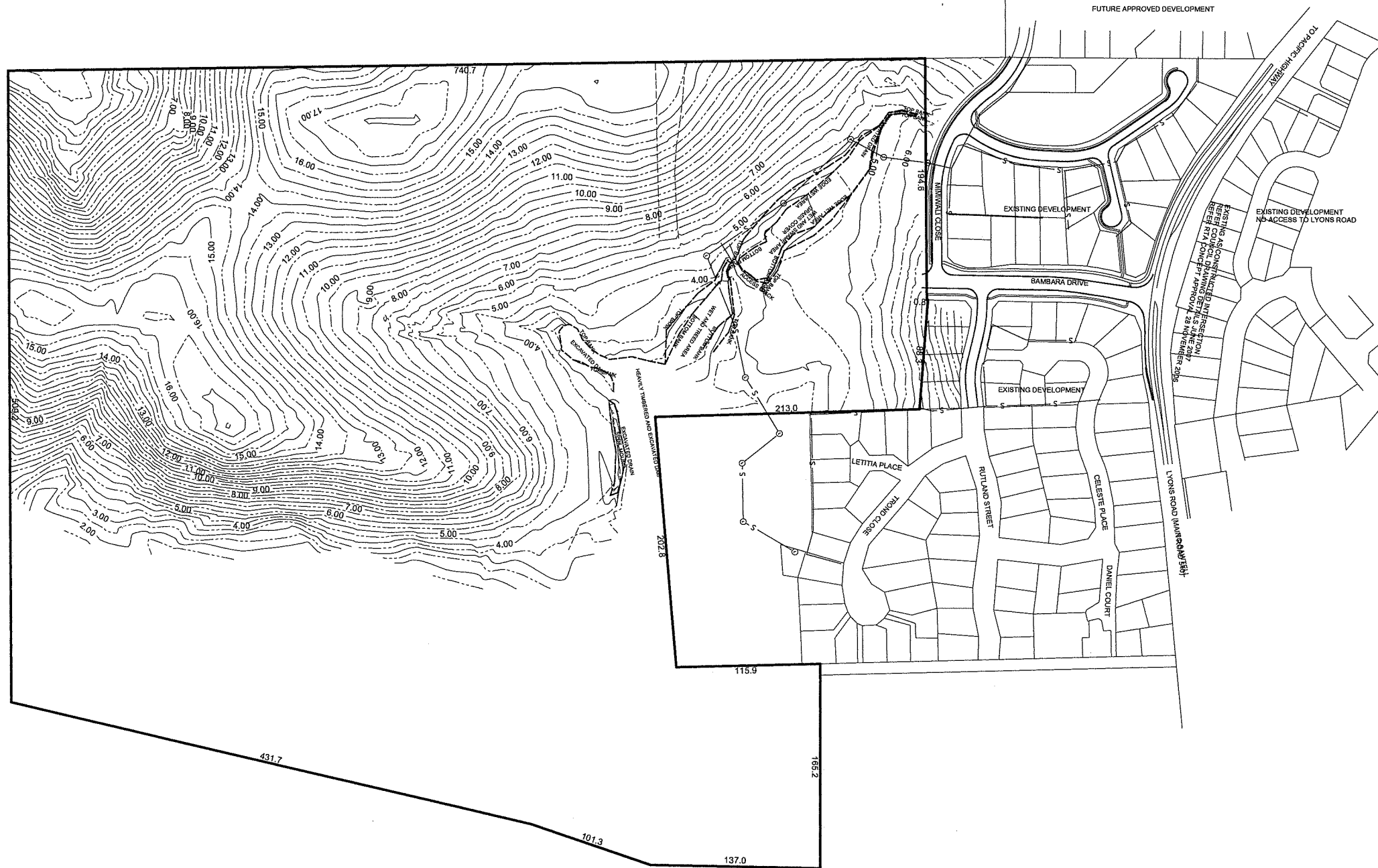
192 PACIFIC HIGHWAY  
COFFS HARBOUR  
ACN 002 787 500  
PHONE 02 6651 1944  
FAX 02 6651 5766  
EMAIL g\_slattery@bigpond.com

#### DRAWING ISSUE PURPOSE

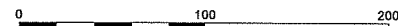
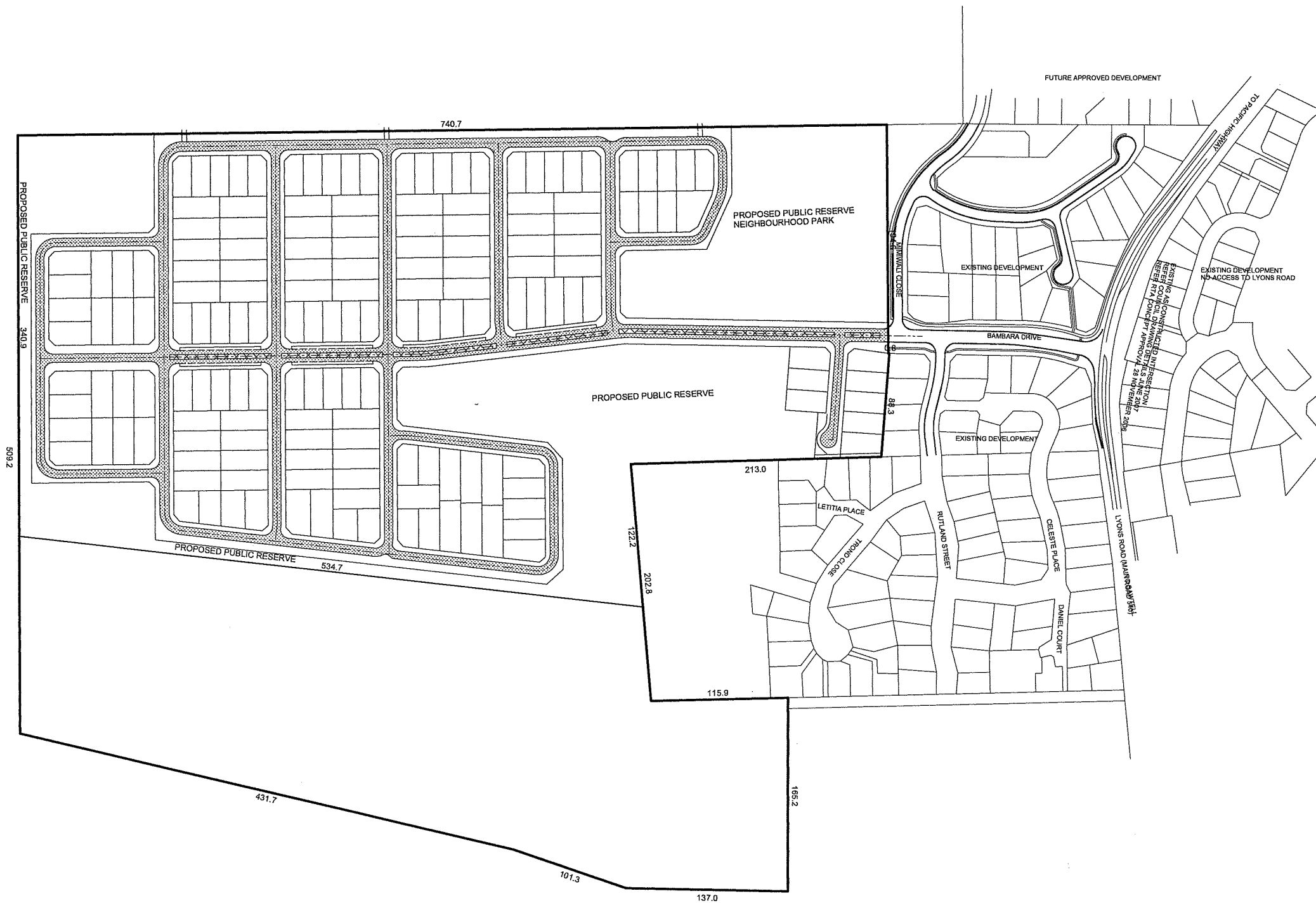
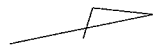
ISSUED FOR  
DEVELOPMENT APPLICATION

#### PROJECT REFERENCES

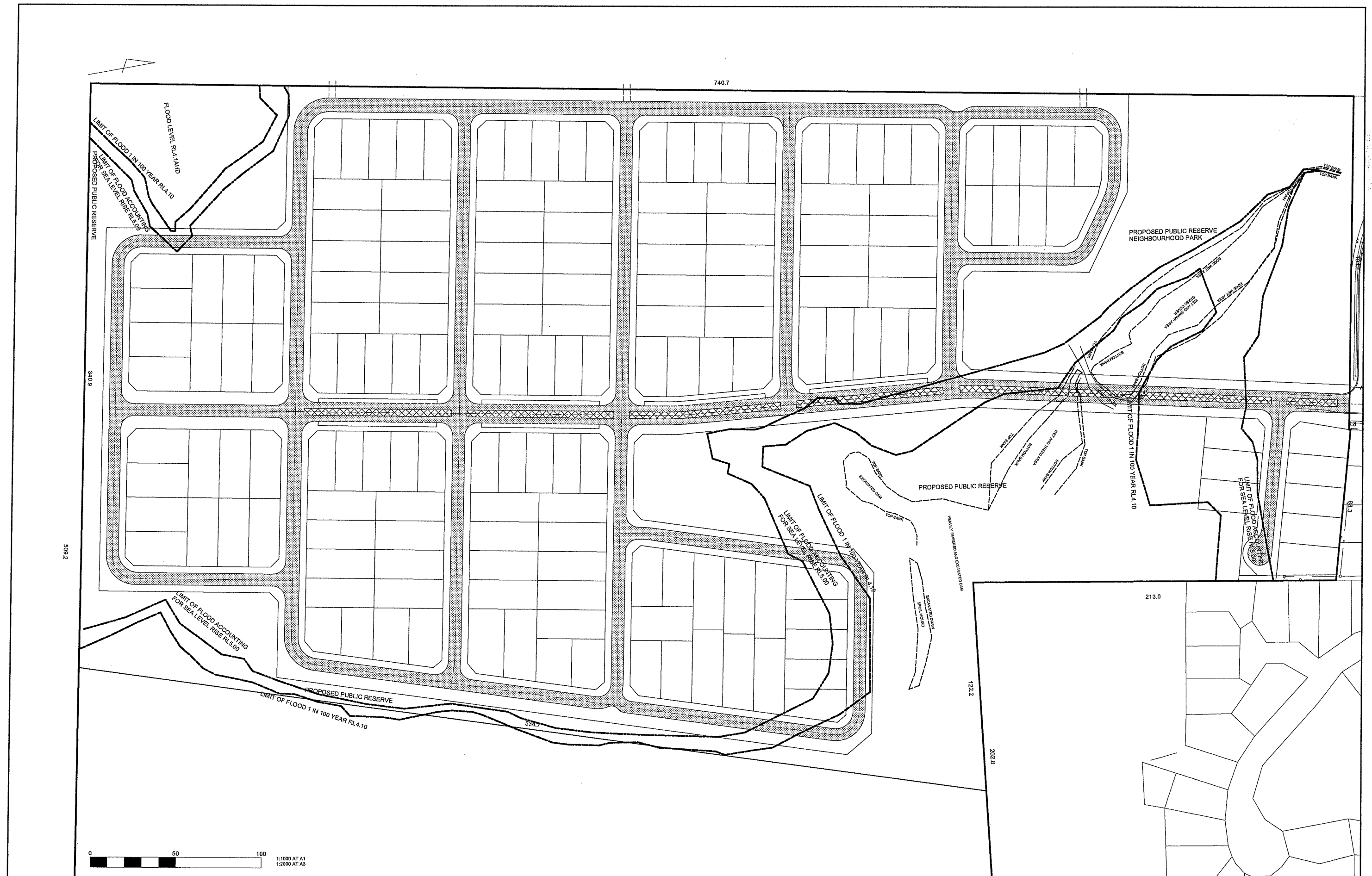
GS&P PROJECT	0824
DoP REF	MP 08-0080
PLAN APPROVAL DATE	



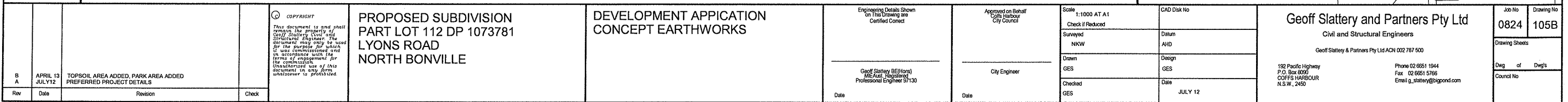
				<p><b>COPYRIGHT</b></p> <p><i>This document is and shall remain the property of Geoff Slattery and Partners Pty Ltd. It is to be used for the purpose for which it was commissioned and in accordance with the terms of engagement for the commission. Unauthorised use of this document in any form whatsoever is prohibited.</i></p>	<p><b>PROPOSED SUBDIVISION</b> <b>PART LOT 112 DP 1073791</b> <b>LYONS ROAD</b> <b>NORTH BONVILLE</b></p>	<p><b>DEVELOPMENT APPLICATION</b> <b>EXISTING SITE</b></p>	<p>Engineering Details Shown on This Drawing are Certified Correct</p>	<p>Approved on Behalf of Coffs Harbour City Council</p>	<p>Scale 1:2000 AT A1 Check if Reduced</p>	<p>CAD Disk No</p>	<p><b>Geoff Slattery and Partners Pty Ltd</b> Civil and Structural Engineers</p> <p>Geoff Slattery &amp; Partners Pty Ltd ABN 65 097 037 221</p> <p>192 Pacific Highway P.O. Box 6090 COFFS HARBOUR N.S.W., 2450</p> <p>Phone 02 6551 1944 Fax 02 6551 5766 Email g.slattery@bigpond.com</p>	<p>Job No <b>0824</b></p>	<p>Drawing No <b>101A</b></p>		
<p><b>PREFERRED PROJECT DETAILS</b></p>							<p>Geoff Slattery (SE/Hons) MIEAust Registered Professional Engineer 59130</p>	<p>City Engineer</p>	<p>Surveyed NKW</p>	<p>Datum AMG, AHD</p>		<p>Drawn GES</p>	<p>Design GES</p>	<p>Dwg of Dwg's</p>	<p>Council No</p>
<p>Rev Date Revision Check</p>							<p>Date</p>	<p>Date</p>	<p>Checked GES</p>	<p>Date JULY 2012</p>					



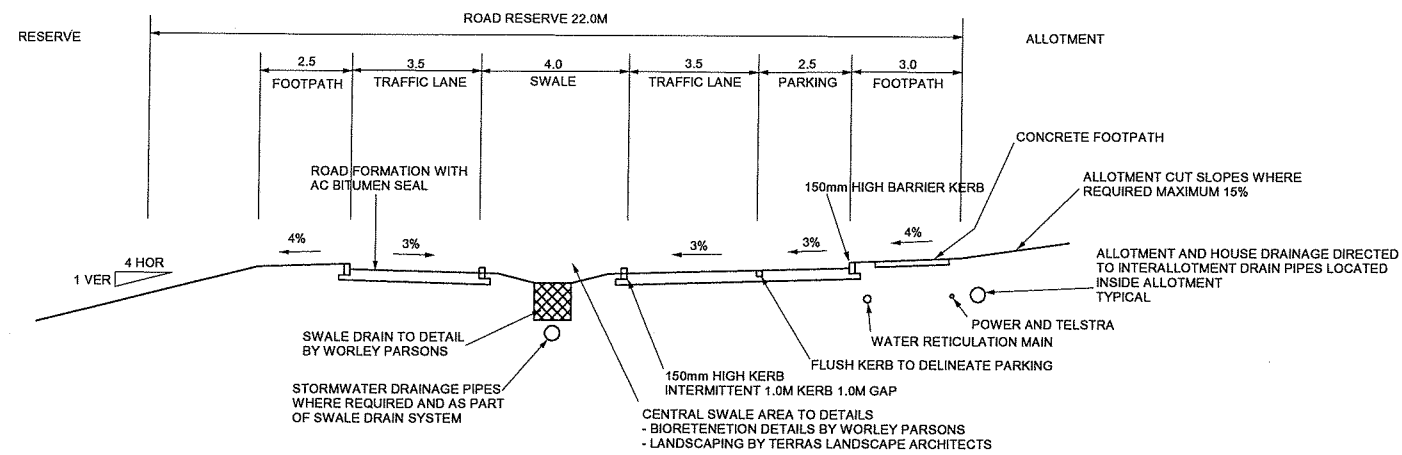
<p><b>PROPOSED SUBDIVISION</b> <b>PART LOT 112 DP 1073791</b> <b>LYONS ROAD</b> <b>NORTH BONVILLE</b></p>				<p><b>DEVELOPMENT APPLICATION</b> <b>OVERALL DEVELOPMENT</b></p>				<p><b>Geoff Slattery and Partners Pty Ltd</b> Civil and Structural Engineers Geoff Slattery &amp; Partners Pty Ltd ABN 65 097 037 221 192 Pacific Highway P.O. Box 9090 COFFS HARBOUR N.S.W., 2450 Phone 02 6551 1944 Fax 02 6551 5766 Email g.slattery@begpond.com</p>				Job No <b>0824</b>	Drawing No <b>102B</b>
<p>Rev Date</p>				<p>Date</p>				<p>Date</p>				<p>Drawing Sheets</p>	
<p>Revision</p>				<p>Check</p>				<p>Dwg of Dwg's</p>				<p>Council No</p>	
<p>Copyright</p>				<p>Engineering Details Shown on This Drawing are Certified Correct</p>				<p>Approved on Behalf Coffs Harbour City Council</p>				<p>Scale 1:2000 AT A1 Check if Reduced</p>	
<p>REFERENCE TO BONDIL BONDIL DELETED PREFERRED PROJECT DETAILS</p>				<p>Geoff Slattery BE(Hons) MIE(Aust) Registered Professional Engineer 97130</p>				<p>City Engineer</p>				<p>Surveyed NKW</p>	
<p>Check</p>				<p>Date</p>				<p>Date</p>				<p>Design GES</p>	
<p>Check</p>				<p>Date</p>				<p>Date</p>				<p>Checkered GES</p>	
<p>Check</p>				<p>Date</p>				<p>Date</p>				<p>July 12</p>	



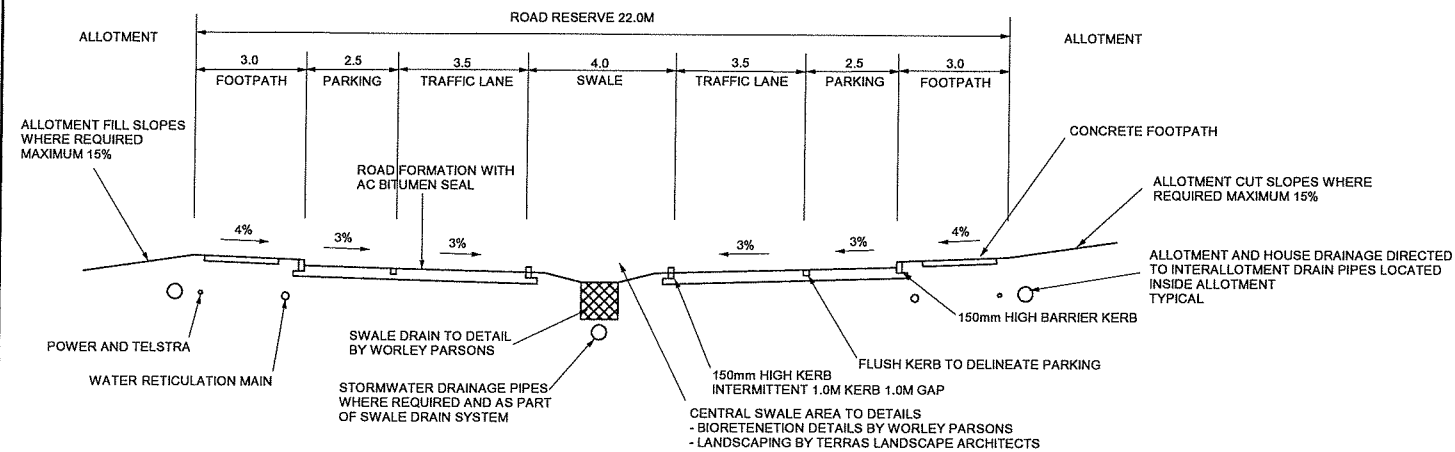




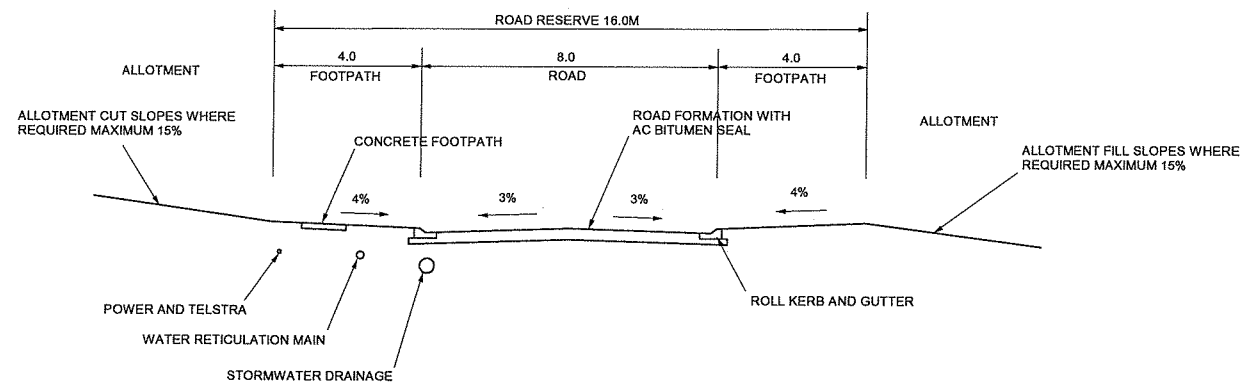




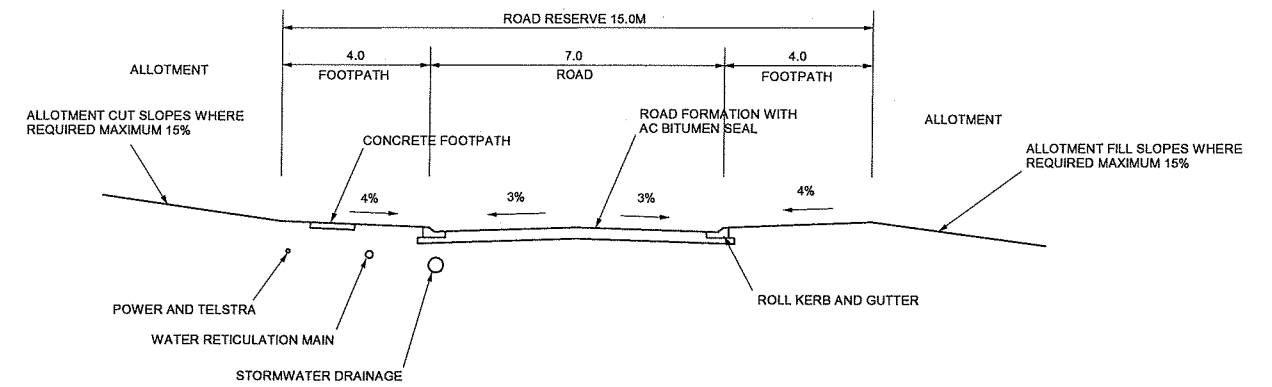
ROAD PROFILE 1 MAIN ENTRY ROAD



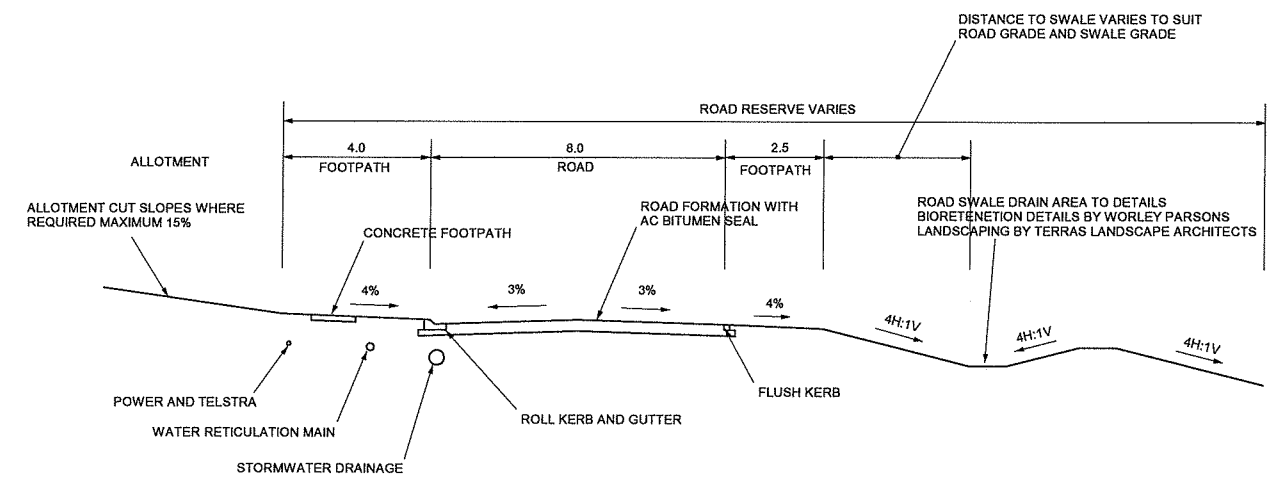
ROAD PROFILE 2 MAIN ENTRY ROAD



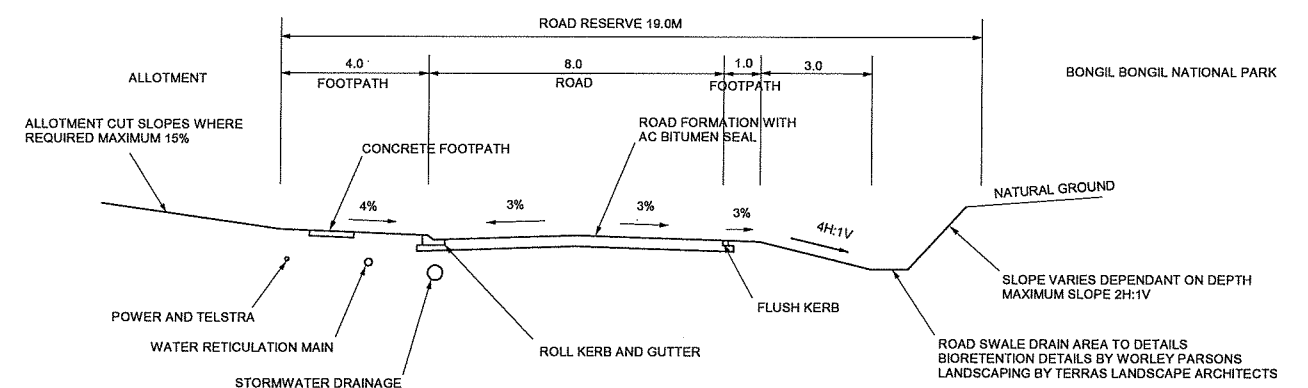
ROAD PROFILE 3 BUS ROUTE



ROAD PROFILE 4 GENERAL INTERNAL



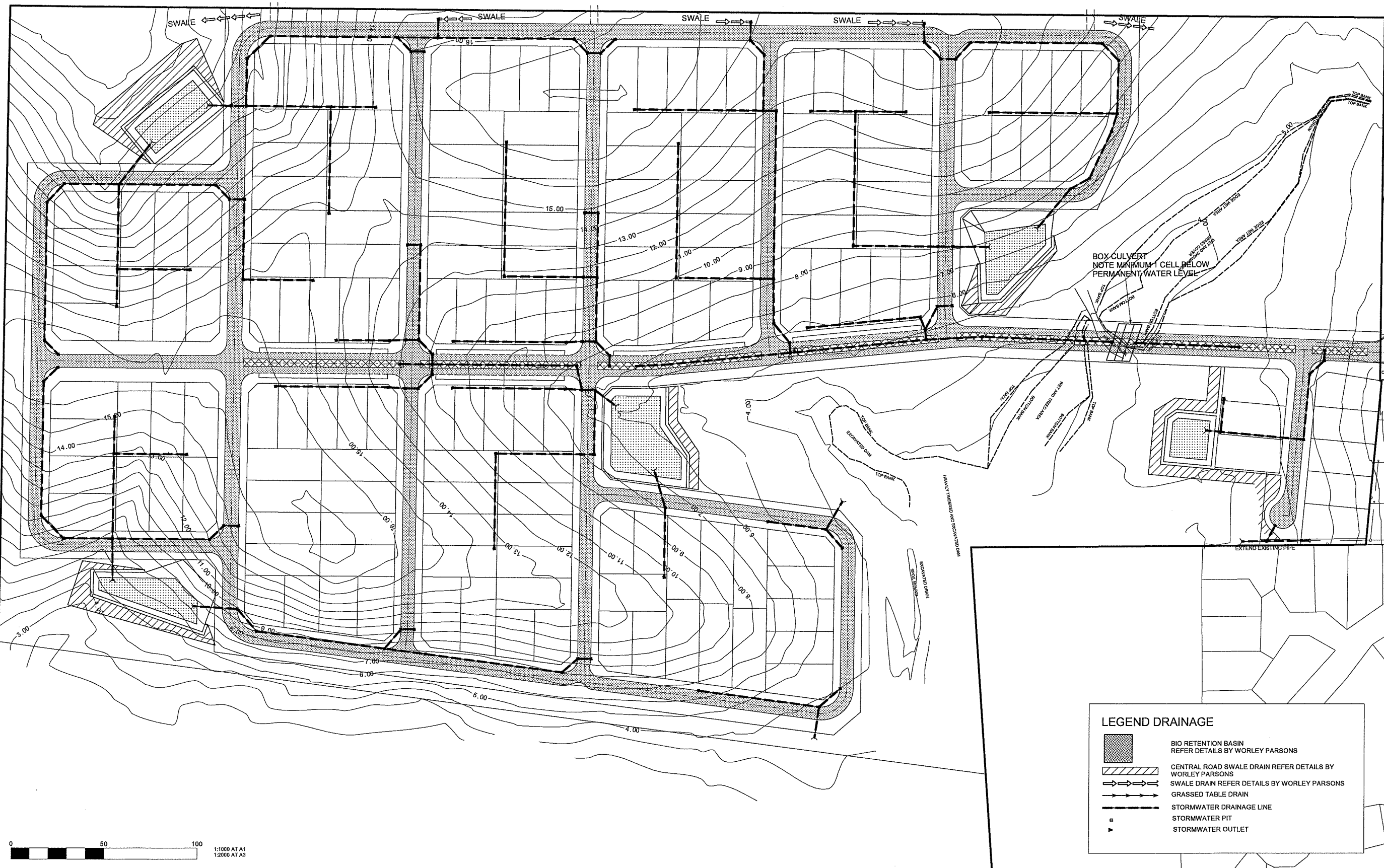
ROAD PROFILE 5



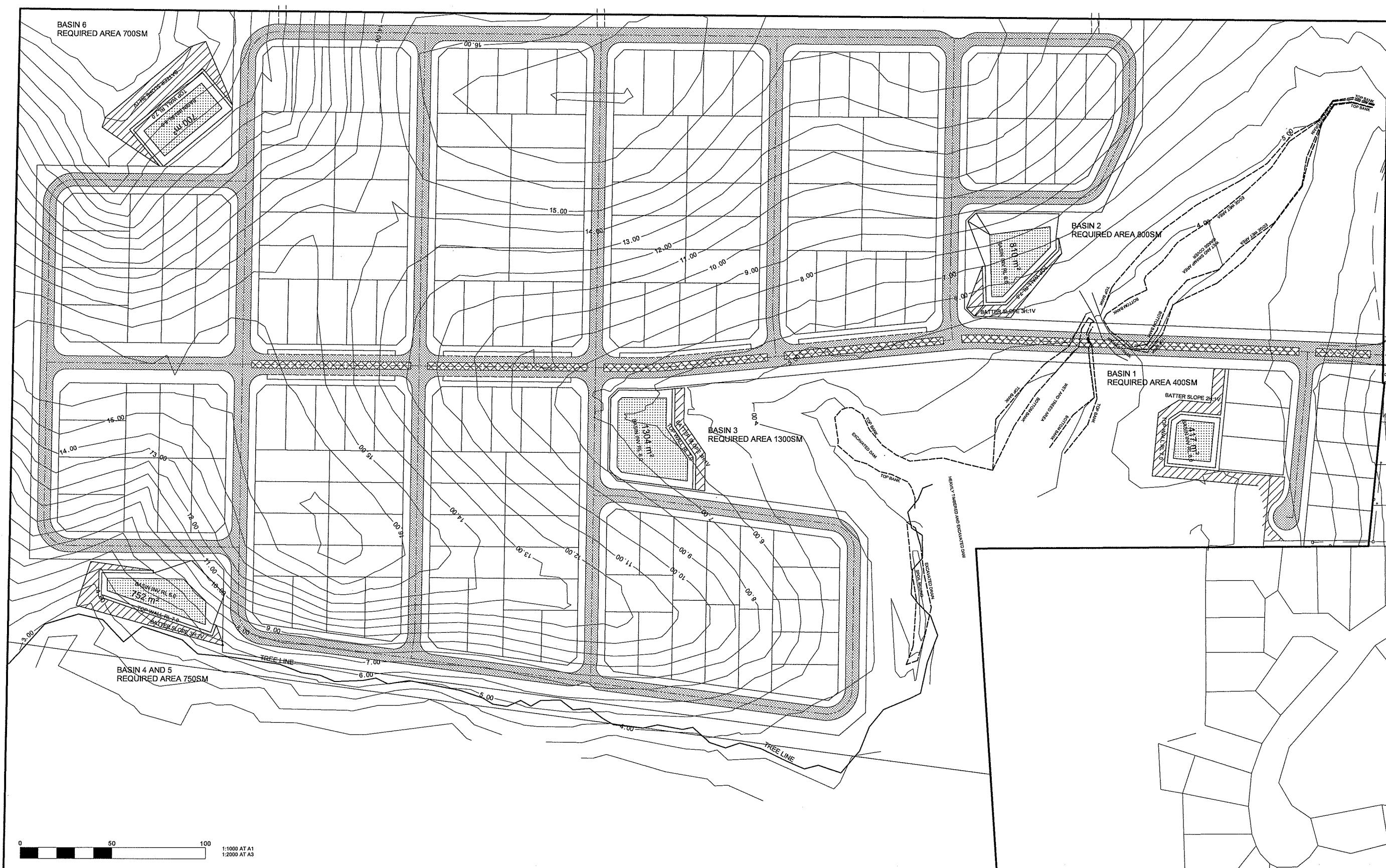
ROAD PROFILE 6

<p>Rev</p> <p>Date</p> <p>Revision</p> <p>Check</p>	<p>A</p> <p>JULY12</p> <p>PREFERRED PROJECT DETAILS</p>	<p>© COPYRIGHT</p> <p>This document is and shall remain the property of Geoff Slattery and Partners Pty Ltd. It is to be used for the purpose for which it was commissioned and in accordance with the terms of engagement for the commission. Any use of this document in any form whatsoever is prohibited.</p>	<p>PROPOSED SUBDIVISION</p> <p>PART LOT 112 DP 1073781</p> <p>LYONS ROAD</p> <p>NORTH BONVILLE</p>	<p>DEVELOPMENT APPLICATION</p> <p>ROAD PROFILES SHEET 1</p>	<p>Engineering Details Shown on this Drawing are Certified Correct</p> <p>Geoff Slattery BE(Hons) MIEAust Registered Professional Engineer 87130</p> <p>Date</p>	<p>Approved on Behalf, City Council</p> <p>City Engineer</p> <p>Date</p>	<p>Scale</p> <p>NTS</p> <p>Check if Reduced</p> <p>Surveyed</p> <p>NKW</p> <p>Drawn</p> <p>GES</p> <p>Checked</p> <p>GES</p>	<p>CAD Disk No</p> <p>Datum</p> <p>AMG, AHD</p> <p>Design</p> <p>GES</p> <p>Date</p> <p>JULY 12</p>	<p>Geoff Slattery and Partners Pty Ltd</p> <p>Civil and Structural Engineers</p> <p>Geoff Slattery &amp; Partners Pty Ltd ABN 65 087 037 221</p> <p>192 Pacific Highway</p> <p>P.O. Box 8090</p> <p>COFFS HARBOUR</p> <p>N.S.W. 2450</p> <p>Phone 02 6651 1944</p> <p>Fax 02 6651 5766</p> <p>Email g_slattery@bigpond.com</p>	<p>Job No</p> <p>0824</p> <p>Drawing No</p> <p>107A</p> <p>Drawing Sheets</p> <p>Dwg of Dwg's</p> <p>Council No</p>
-----------------------------------------------------	---------------------------------------------------------	-------------------------------------------------------------------------------------------------------------------------------------------------------------------------------------------------------------------------------------------------------------------------------------------------------------------	----------------------------------------------------------------------------------------------------	-------------------------------------------------------------	------------------------------------------------------------------------------------------------------------------------------------------------------------------	--------------------------------------------------------------------------	------------------------------------------------------------------------------------------------------------------------------	-----------------------------------------------------------------------------------------------------	--------------------------------------------------------------------------------------------------------------------------------------------------------------------------------------------------------------------------------------------------------------------------------------------------------------------------------	---------------------------------------------------------------------------------------------------------------------





A	JULY 12	PREFERRED PROJECT DETAIL	<p><b>COPYRIGHT</b></p> <p>This document is and shall remain the property of Geoff Slattery and Partners Pty Ltd. It is to be used for the purpose for which it was commissioned and no other use of this document in any form whatsoever is prohibited.</p>	<p><b>PROPOSED SUBDIVISION</b>  <b>PART LOT 112 DP 1073781</b>  <b>LYONS ROAD</b>  <b>NORTH BONVILLE</b></p>	<p><b>DEVELOPMENT APPLICATION</b>  <b>CONCEPT STORMWATER</b></p>	<p>Engineering Details Shown on This Drawing are Certified Correct</p> <p>Geoff Slattery BE(Hons)          ME, AS/NZS Registered Professional Engineer 97130</p> <p>Date</p>	<p>Approved on Behalf of City Council</p> <p>City Engineer</p> <p>Date</p>	<p>Scale 1:1000 AT A1</p> <p>Check if Reduced</p> <p>Surveyed NKW</p> <p>Drawn GES</p> <p>Checked GES</p>	<p>CAD Disk No</p> <p>Datum AHD</p> <p>Design GES</p> <p>Date JULY 2012</p>	<p><b>Geoff Slattery and Partners Pty Ltd</b>          Civil and Structural Engineers</p> <p>Geoff Slattery &amp; Partners Pty Ltd ACN 002 787 500</p> <p>192 Pacific Highway          P.O. Box 9550          COFFS HARBOUR N.S.W. 2450</p> <p>Phone 02 6651 1944          Fax 02 6651 5766          Email g_slattery@bigpond.com</p>	<p>Job No 0824 Drawing No 109A</p> <p>Drawing Sheets</p> <p>Dwg of Dwg's</p> <p>Council No</p>
---	---------	--------------------------	--------------------------------------------------------------------------------------------------------------------------------------------------------------------------------------------------------------------------------------------------------------	--------------------------------------------------------------------------------------------------------------------------	----------------------------------------------------------------------	----------------------------------------------------------------------------------------------------------------------------------------------------------------------------------	----------------------------------------------------------------------------	-----------------------------------------------------------------------------------------------------------	-----------------------------------------------------------------------------	-----------------------------------------------------------------------------------------------------------------------------------------------------------------------------------------------------------------------------------------------------------------------------------------------------------------------------------------------------------	------------------------------------------------------------------------------------------------



A	JULY12	PREFERRED PROJECT DETAILS	<p><b>© COPYRIGHT</b></p> <p>This document is and shall remain the property of Geoff Slattery and Partners Pty Ltd. It is to be used for the purposes for which it was commissioned and in accordance with the terms of engagement for the commission. Unauthorised use of this document in any form whatsoever is prohibited.</p>	<p><b>PROPOSED SUBDIVISION</b>  <b>PART LOT 112 DP 1073781</b>  <b>LYONS ROAD</b>  <b>NORTH BONVILLE</b></p>	<p><b>DEVELOPMENT APPLICATION</b>  <b>WSUD BASIN LAYOUTS</b></p>	<p>Engineering Details Shown on This Drawing are Certified Correct</p> <p>Geoff Slattery BE(Hons)          MCAust (Registered)          Professional Engineer 97130</p>	<p>Approved on Behalf of City Council</p> <p>City Engineer</p>	<p>Scale: 1:1000 AT A1</p> <p>Check if Reduced</p> <p>Surveyed NKW</p> <p>Drawn GES</p> <p>Checked GES</p>	<p>CAD Disk No</p> <p>Datum AHD</p> <p>Design GES</p> <p>Date JULY 2012</p>	<p><b>Geoff Slattery and Partners Pty Ltd</b>          Civil and Structural Engineers</p> <p>Geoff Slattery &amp; Partners Pty Ltd ACN 002 787 501</p> <p>192 Pacific Highway          P.O. Box 6050          COFFS HARBOUR          N.S.W., 2450</p> <p>Phone 02 6551 1944          Fax 02 6551 5766          Email g_slattery@geopond.com</p>	<p>Job No 0824 Drawing No 110A</p> <p>Drawing Sheets</p> <p>Dwg. of Dwg's</p> <p>Council No</p>
Rev	Date	Revision	Check			Date	Date	Date	Date		