

LEGEND

- EXISTING TREE RETAINED AND PROTECTED
- EXISTING TREE IN STAGE 2 RETAINED AND PROTECTED
- EXISTING TREE REMOVED
- EXISTING TREE TO BE REMOVED
- AUSTRIAL GRANITE PAVING TO CITY OF SYDNEY SPECIFICATION
- EXISTING TRAM OVERHEAD WIRE POLE RETAINED
- EXISTING SERVICES PIT COVER REPLACED WITH INLAY LID TO CITY OF SYDNEY SPECIFICATION
- STAGE 1 BOUNDARY
- STAGE 2 BOUNDARY
- STREET SIGNAGE - STAGE 1 WORKS
- CARPARK LIGHTING TO LIGHTRAID DESIGNER DETAILS
- NEW SMART POLE TYPE S18 8m WITH BANNER ARM, 3m LIGHT OUT REACH (SINGLE) SP1-3, SP5, SP10 + TYPE S1A 8m WITH OUTREACH TRAFFIC ARM & 3m LIGHT OUTREACH (SP6, SP8, SP9)
- NEW STREET TREE AS PER CITY OF SYDNEY STREET TREE MASTERPLAN
- EXISTING STREET TREE RETAINED - NEW POUROUS PAVING SURROUND
- NEW ORCULOCOVER AND SHRUB PLANTING
- NEW ON SITE TREE PLANTING
- NEW STAINLESS STEEL MESH CHAIR PROBE DELETED
- NEW PALLISADE SECURITY FENCE TO BOUNDARY
- REINSTATED PARKING METER
- POLE LIGHTING TO ENGINEERS DETAILS

NOTE
STREET TREE FOR CAMPBELL STREET - LOPHOSTEMON CONFERTUS
STREET TREE FOR HAY STREET - FLINDERSIA AUSTRALIS

NEW TREE SCHEDULE (NT)

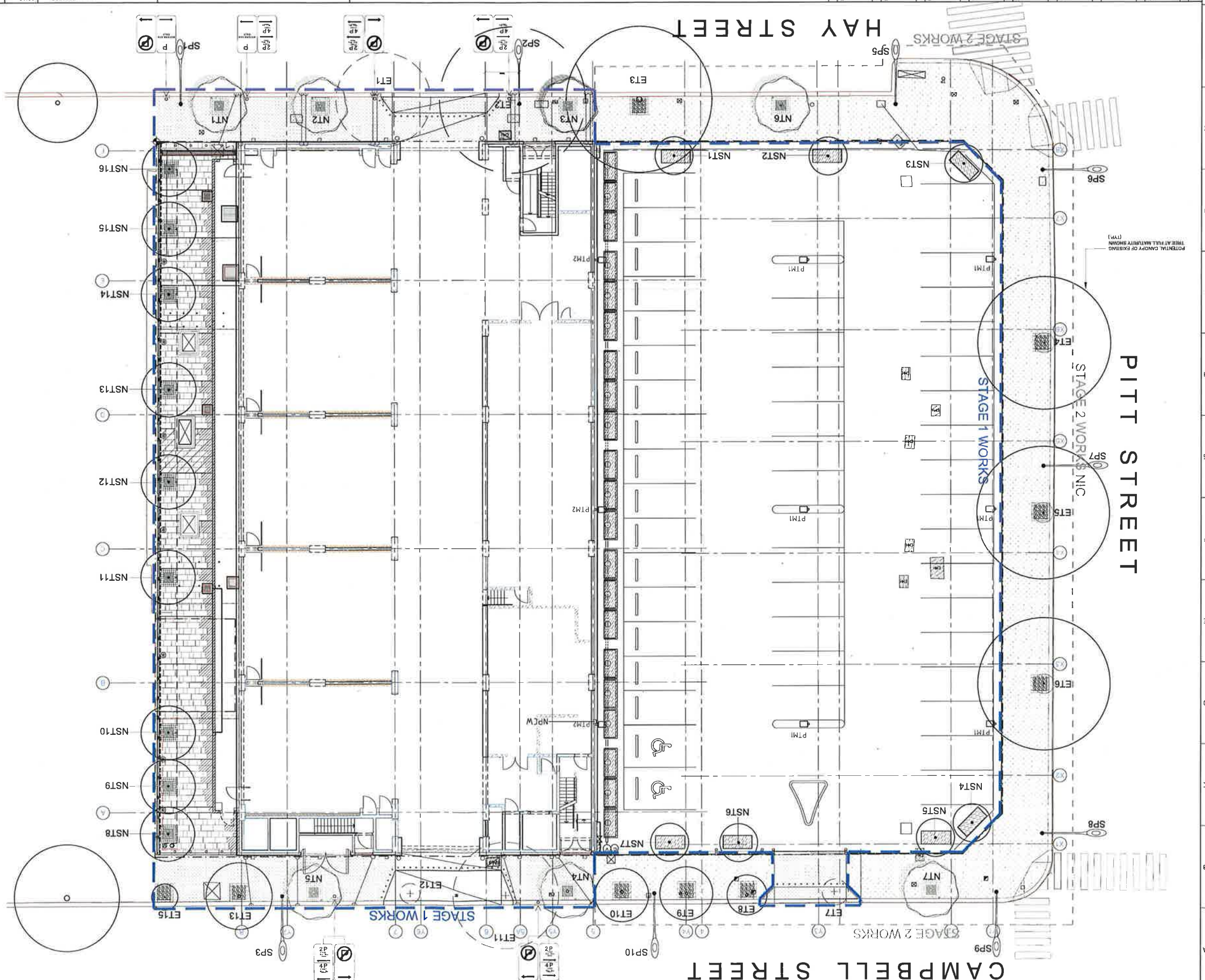
NO.	BOTANICAL NAME	COMMON NAME	HEIGHT (m)	SIZE	QTY
NT1 - 3	Flindersia australis	Crowns Ash	10-20m	300L	3
NT5	Flindersia australis	Flindersia australis	NOT IN CURRENT SCOPE OF WORK		
CAMPBELL STREET					
NO.	BOTANICAL NAME	COMMON NAME	HEIGHT (m)	SIZE	QTY
NT4 - 5	Lophospermum confertus	Brush Box	20-30m	300L	2
NT7	Lophospermum confertus	Lophospermum confertus	NOT IN CURRENT SCOPE OF WORK		

* Plant specimens to comply with CoS Tree Master Plan Specification

NEW SITE TREE SCHEDULE (NST)

NO.	BOTANICAL NAME	COMMON NAME	HEIGHT (m)	SIZE	QTY
NST11 - 7	Triplaris laurifolia 'Tussock'	Water Gum	7-12m	75L	7
NST18 - 16	Gorizia prolifica	Fried Egg Plant	9m	150L	9

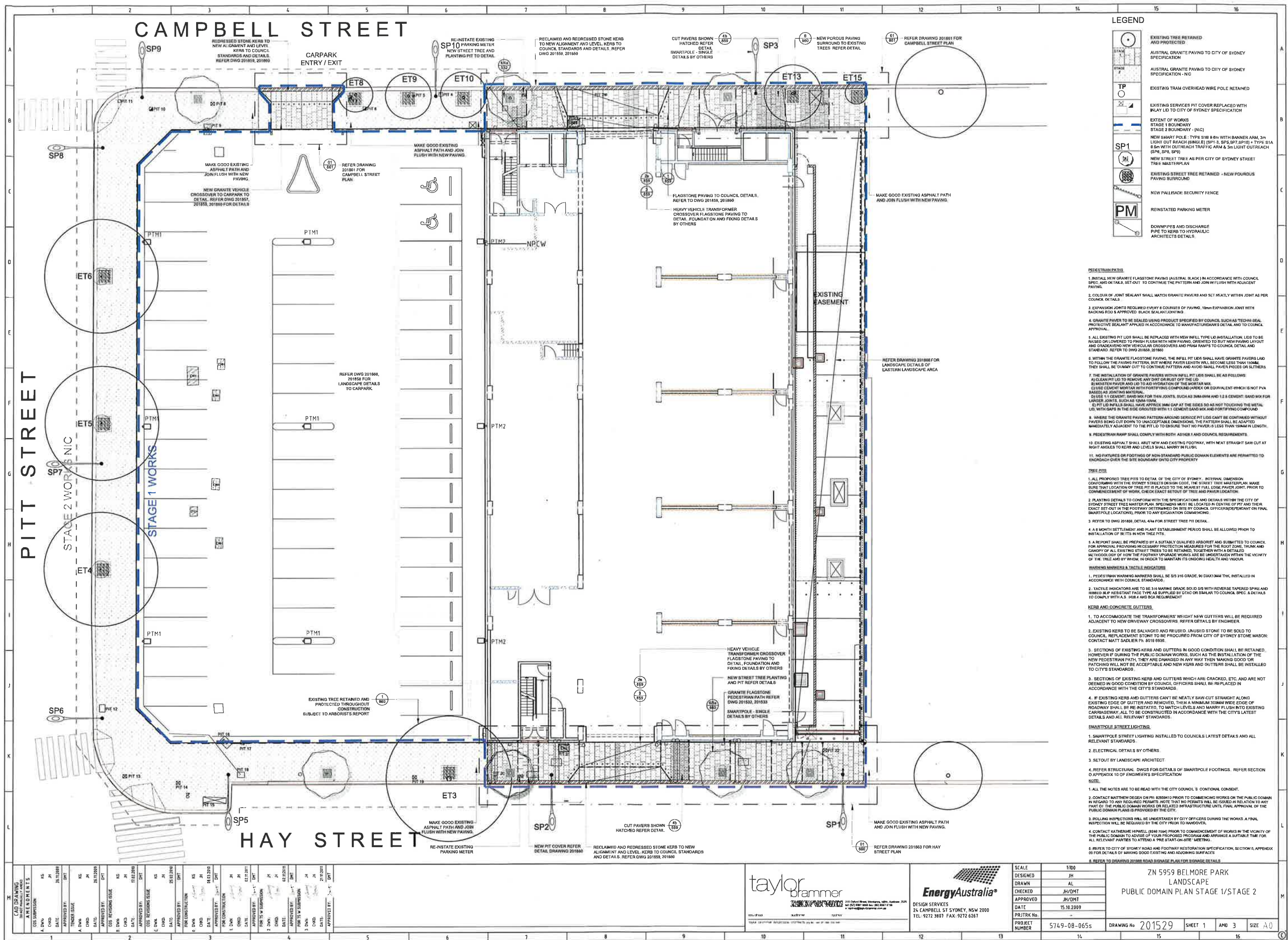
* Plant specimens to comply with CoS Tree Master Plan Specification

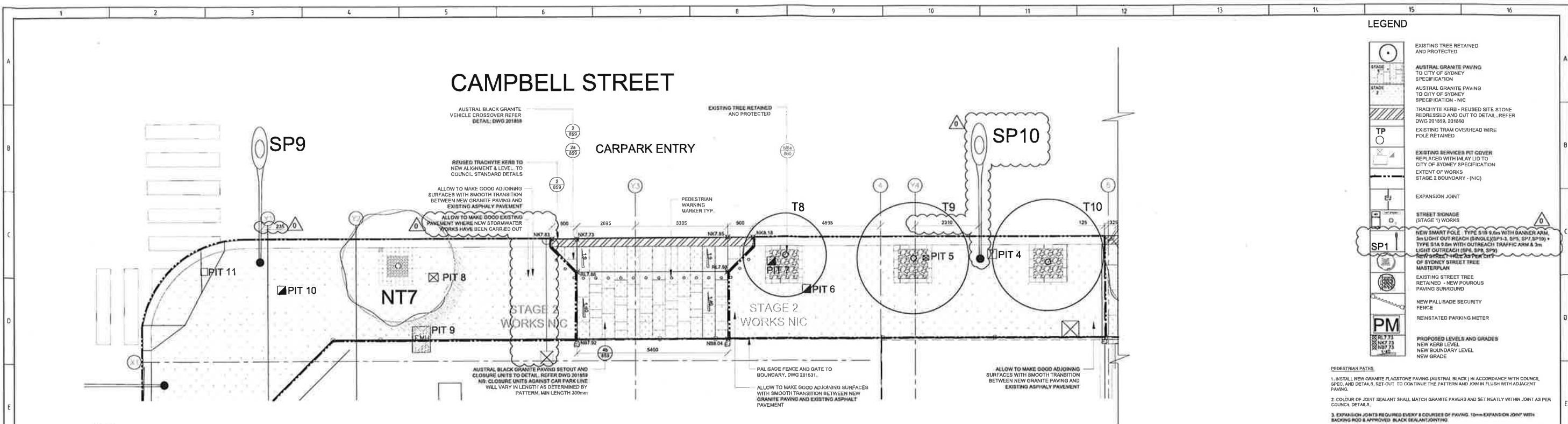
[illegible]

74	574-9-08-0655	DRAWING No.	201525	15	16
75	15 10 2009	JH/DMT	MASTERPLAN	17	18
76	JH/DMT	JH/DMT	LANDSCAPE	19	20
77	AL			21	22
78	JH			23	24
79	1:100			25	26
80				27	28
81				29	30
82				31	32
83				33	34
84				35	36
85				37	38
86				39	40
87				41	42
88				43	44
89				45	46
90				47	48
91				49	50
92				51	52
93				53	54
94				55	56
95				57	58
96				59	60
97				61	62
98				63	64
99				65	66
100				67	68
101				69	70
102				71	72
103				73	74
104				75	76
105				77	78
106				79	80
107				81	82
108				83	84
109				85	86
110				87	88
111				89	90
112				91	92
113				93	94
114				95	96
115				97	98
116				99	100
117				101	102
118				103	104
119				105	106
120				107	108
121				109	110
122				111	112
123				113	114
124				115	116
125				117	118
126				119	120
127				121	122
128				123	124
129				125	126
130				127	128
131				129	130
132				131	132
133				133	134
134				135	136
135				137	138
136				139	140
137				141	142
138				143	144
139				145	146
140				147	148
141				149	150
142				151	152
143				153	154
144				155	156
145				157	158
146				159	160
147				161	162
148				163	164
149				165	166
150				167	168
151				169	170
152				171	172
153				173	174
154				175	176
155				177	178
156				179	180
157				181	182
158				183	184
159				185	186
160				187	188
161				189	190
162				191	192
163				193	194
164				195	196
165				197	198
166				199	200
167				201	202
168				203	204
169				205	206
170				207	208
171				209	210
172				211	212
173				213	214
174				215	216
175				217	218
176				219	220
177				221	222
178				223	224
179				225	226
180				227	228
181				229	230
182				231	232
183				233	234
184				235	236
185				237	238
186				239	240
187				241	242
188				243	244
189				245	246
190				247	248
191				249	250
192				251	252
193				253	254
194				255	256
195				257	258
196				259	260
197				261	262
198				263	264
199				265	266
200				267	268
201				269	270
202				271	272
203				273	274
204				275	276
205				277	278
206				279	280
207				281	282
208				283	284
209				285	286
210				287	288
211				289	290
212				291	292
213				293	294
214				295	296
215				297	298
216				299	300
217				301	302
218				303	304
219				305	306
220				307	308
221				309	310
222				311	312
223				313	314
224				315	316
225				317	318
226				319	320
227				321	322
228				323	324
229				325	326
230				327	328
231				329	330
232				331	332
233				333	334
234				335	336
235				337	338
236				339	340
237				341	342
238				343	344
239				345	346
240				347	348
241				349	350
242				351	352
243				353	354
244				355	356
245				357	358
246				359	360
247				361	362
248				363	364
249				365	366
250				367	368
251				369	370
252				371	372
253				373	374
254				375	376
255				377	378
256				379	380
257				381	382
258				383	384
259				385	386
260				387	388
261				389	390
262				391	392
263				393	394
264				395	396
265				397	398
266				399	400
267				401	402
268				403	404
269				405	406
270				407	408
271				409	410
272				411	412
273				413	414
274				415	416
275				417	418
276				419	420
277				421	422
278				423	424
279				425	426
280				427	428
281				429	430
282				431	432
283				433	434
284				435	436
285				437	438
286				439	440
287				441	442
288				443	444
289				445	446
290				447	448
291				449	450
292				451	452
293				453	454
294				455	456
295				457	458
296				459	460
297				461	462
298				463	464
299				465	466
300				467	468
301				469	470
302				471	472
303				473	474
304				475	476
305				477	478
306				479	480
307				481	482
308				483	484
309				485	486
310				487	488
311				489	490
312				491	492
313				493	494
314				495	496
315				497	498
316				499	500
317				501	502
318				503	504
319				505	506
320				507	508
321				509	510
322				511	512
323				513	514
324				515	516
325				517	518
326				519	520
327				521	522
328				523	524
329				525	526
330				527	528
331				529	530
332				531	532
333				533	534
334				535	536
335				537	538
336				539	540
337				541	542
338				543	544
339				545	546
340				547	548
341				549	550
342				551	552
343				553	554
344				555	556
345				557	558
346				559	560
347				561	562
348				563	564
349				565	566
350				567	568
351				569	570
352				571	572
353				573	574
354				575	576
355				577	578
356				579	580
357				581	582
358				583	584
359				585	586
360				587	588
361				589	590
362				591	592
363				593	594
364				595	596
365				597	598
366				599	600
367				601	602
368				603	604
369				605	606
370				607	608
371				609	610
372				611	612
373				613	614
374				615	616
375				617	618
376				619	620
377				621	622
378				623	624
379				625	626
380				627	628
381				629	630
382				631	632
383				633	634
384				6	

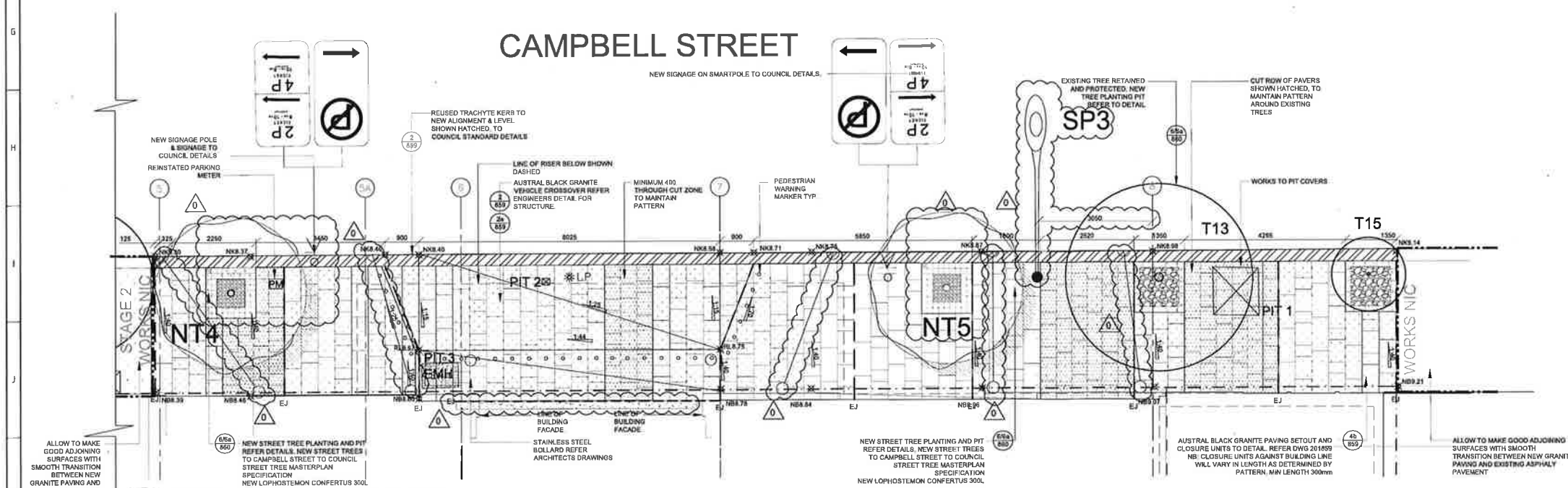
[illegible]

EXISTING TREE REMAINED	
EXISTING TREE IN STAGE 2	
RETAINED AND PROTECTED	
EXISTING TREE REMOVED	
EXISTING TREE TO BE REMOVED	
AUSTAL GRANITE PAVING	
CITY OF SYDNEY SPECIFICATION	
EXISTING TRUNK OVERHEAD WIRE	
POLE REMAINED	
REPLACED WITH AN ALU TO	
CITY OF SYDNEY SPECIFICATION	
STAGE 1 BOUNDARY	
STAGE 2 BOUNDARY	
STREET BOUNDARY - STAGE 1	
WORKS	
ALU TO	
STAGE 1 BOUNDARY	
STAGE 2 BOUNDARY	
STREET BOUNDARY - STAGE 1	
WORKS	
ALU TO	
STAGE 1 BOUNDARY	
STAGE 2 BOUNDARY	
STREET BOUNDARY - STAGE 1	
WORKS	
ALU TO	
STAGE 1 BOUNDARY	
STAGE 2 BOUNDARY	
STREET BOUNDARY - STAGE 1	
WORKS	
ALU TO	
STAGE 1 BOUNDARY	
STAGE 2 BOUNDARY	
STREET BOUNDARY - STAGE 1	
WORKS	
ALU TO	
STAGE 1 BOUNDARY	
STAGE 2 BOUNDARY	
STREET BOUNDARY - STAGE 1	
WORKS	
ALU TO	
STAGE 1 BOUNDARY	
STAGE 2 BOUNDARY	
STREET BOUNDARY - STAGE 1	
WORKS	
ALU TO	
STAGE 1 BOUNDARY	
STAGE 2 BOUNDARY	
STREET BOUNDARY - STAGE 1	
WORKS	
ALU TO	
STAGE 1 BOUNDARY	
STAGE 2 BOUNDARY	
STREET BOUNDARY - STAGE 1	
WORKS	
ALU TO	
STAGE 1 BOUNDARY	
STAGE 2 BOUNDARY	
STREET BOUNDARY - STAGE 1	
WORKS	
ALU TO	
STAGE 1 BOUNDARY	
STAGE 2 BOUNDARY	
STREET BOUNDARY - STAGE 1	
WORKS	
ALU TO	
STAGE 1 BOUNDARY	
STAGE 2 BOUNDARY	
STREET BOUNDARY - STAGE 1	
WORKS	
ALU TO	
STAGE 1 BOUNDARY	
STAGE 2 BOUNDARY	
STREET BOUNDARY - STAGE 1	
WORKS	
ALU TO	
STAGE 1 BOUNDARY	
STAGE 2 BOUNDARY	
STREET BOUNDARY - STAGE 1	
WORKS	
ALU TO	
STAGE 1 BOUNDARY	
STAGE 2 BOUNDARY	
STREET BOUNDARY - STAGE 1	
WORKS	
ALU TO	
STAGE 1 BOUNDARY	
STAGE 2 BOUNDARY	
STREET BOUNDARY - STAGE 1	
WORKS	
ALU TO	
STAGE 1 BOUNDARY	
STAGE 2 BOUNDARY	
STREET BOUNDARY - STAGE 1	
WORKS	
ALU TO	
STAGE 1 BOUNDARY	
STAGE 2 BOUNDARY	
STREET BOUNDARY - STAGE 1	
WORKS	
ALU TO	
STAGE 1 BOUNDARY	
STAGE 2 BOUNDARY	
STREET BOUNDARY - STAGE 1	
WORKS	
ALU TO	
STAGE 1 BOUNDARY	
STAGE 2 BOUNDARY	
STREET BOUNDARY - STAGE 1	
WORKS	
ALU TO	
STAGE 1 BOUNDARY	
STAGE 2 BOUNDARY	
STREET BOUNDARY - STAGE 1	</





1 CAMPBELL STREET PUBLIC DOMAIN PLAN
PLAN 1:50



2 CAMPBELL STREET PUBLIC DOMAIN PLAN
PLAN 1:50

PLANT SCHEDULE

BOTANICAL NAME	COMMON NAME	HEIGHT (m)	SIZE	QTY
<i>Lophostemon confertus</i>	Brush Box	20m	300L	2

* Plant specimens to comply with CoS Tree Master Plan Specification

REVISIONS

NO.	DATE	BY	DESCRIPTION
1	24.11.2009	KG	ISSUE FOR CONSTRUCTION
2	24.11.2009	KG	ISSUE FOR CONSTRUCTION
3	24.11.2009	KG	ISSUE FOR CONSTRUCTION
4	24.11.2009	KG	ISSUE FOR CONSTRUCTION
5	24.11.2009	KG	ISSUE FOR CONSTRUCTION
6	24.11.2009	KG	ISSUE FOR CONSTRUCTION
7	24.11.2009	KG	ISSUE FOR CONSTRUCTION
8	24.11.2009	KG	ISSUE FOR CONSTRUCTION
9	24.11.2009	KG	ISSUE FOR CONSTRUCTION
10	24.11.2009	KG	ISSUE FOR CONSTRUCTION
11	24.11.2009	KG	ISSUE FOR CONSTRUCTION
12	24.11.2009	KG	ISSUE FOR CONSTRUCTION
13	24.11.2009	KG	ISSUE FOR CONSTRUCTION
14	24.11.2009	KG	ISSUE FOR CONSTRUCTION
15	24.11.2009	KG	ISSUE FOR CONSTRUCTION
16	24.11.2009	KG	ISSUE FOR CONSTRUCTION

ISSUE FOR CONSTRUCTION

taylor
brammer
218 Oxford Street, Melbourne, VIC 3000
Tel: 03 9272 3801 Fax: 03 9272 6267

EnergyAustralia
DESIGN SERVICES
24 CAMPBELL ST SYDNEY, NSW 2000
TEL 9272 3801 FAX 9272 6267

SCALE	1:100
DESIGNED	JH
DRAWN	AL
CHECKED	JH/DHT
APPROVED	JH/DHT
DATE	15.10.2009
PROJECT No.	5749-08-065s
DRAWING No.	201857
SHEET	1
AMD	0
SIZE	A0

NB: REFER TO DWG 201529 FOR FULL SITE PUBLIC DOMAIN PLAN

- PEDESTRIAN PATHS**
1. INSTALL NEW GRANITE FLAGSTONE PAVING (AUSTRAL BLACK) IN ACCORDANCE WITH COUNCIL SPEC. AND DETAIL 8. SET-OUT TO CONTINUE THE PATTERN AND JOIN IN FLUSH WITH ADJACENT PAVING.
 2. COLOUR OF JOINT SEALANT SHALL MATCH GRANITE PAVERS AND SET SEATLY WITHIN JOINT AS PER COUNCIL DETAILS.
 3. EXPANSION JOINTS REQUIRED EVERY 8 COURSES OF PAVING. 10mm EXPANSION JOINT WITH BACKING ROD & APPROVED BLACK SEALANT JOINTING.
 4. GRANITE PAVES TO BE SEALED USING PRODUCT SPECIFIED BY COUNCIL, SUCH AS TECHNICAL SEAL PROTECTIVE SEALANT APPLIED IN ACCORDANCE TO MANUFACTURER'S DETAIL AND TO COUNCIL APPROVAL.
 5. ALL EXISTING PIT LIDS SHALL BE REPLACED WITH NEW INFILL TYPE LID INSTALLATION. LIDS TO BE BASED ON LOWEST TO FINISH FLUSH WITH NEW PAVING. ORIENTED TO SUIT NEW PAVING LAYOUT AND GRADE/AVOID NEW VEHICULAR CROSSOVERS AND PAVEMENTS TO COUNCIL DETAIL AND STANDARD. REFER TO DWG 201855, 201860.
 6. WITHIN THE GRANITE FLAGSTONE PAVING, THE INFILL PIT LID SHALL HAVE GRANITE PAVERS LAD TO FOLLOW THE PAVING PATTERN, BUT WHERE PAVEMENT LENGTH WILL BECOME LESS THAN 150mm, THEY SHALL BE DUMMY CUT TO CONTINUE PATTERN AND AVOID SMALL PAVEMENT PIECES OR SLUTTERS.
 7. THE INSTALLATION OF GRANITE PAVERS WITHIN INFILL PIT LIDS SHALL BE AS FOLLOWS:
 - a) LID TO BE REMOVED AND DIRT OR RUST OFF THE LID
 - b) MOISTEN PAVEMENT AND LID TO ADD HYDRATION OF THE MORTAR MIX
 - c) USE CEMENT MORTAR WITH FORTIFYING COMPOUND (ARDEX OR EQUIVALENT WHICH IS NOT PVA BASED) AS JOINTING MATERIAL
 - d) USE 1:1 CEMENT: SAND MIX FOR THIN JOINTS, SUCH AS 30MM-50MM AND 1:2 CEMENT: SAND MIX FOR LARGER JOINTS, SUCH AS 100MM-150MM
 - e) PIT LID INFILL SHALL HAVE APPROX 3MM GAP AT THE SIDES SO AS NOT TO TOUCH THE METAL LID, WITH GAPS IN THE SIDE GROUTED WITH 1:1 CEMENT: SAND MIX AND FORTIFYING COMPOUND.
 8. WHERE THE GRANITE PAVING PATTERN AROUND SERVICE PIT LIDS CANNOT BE CONTINUED WITHOUT PAVES BEING CUT DOWN TO UNACCEPTABLE DIMENSIONS, THE PATTERN SHALL BE ADAPTED IMMEDIATELY ADJACENT TO THE PIT LID TO ENSURE THAT NO PAVEMENT IS LESS THAN 150MM IN LENGTH.
 9. PEDESTRIAN RAMP SHALL COMPLY WITH BOTH AS 1428.1 AND COUNCIL REQUIREMENTS.
 10. EXISTING ASPHALT SHALL ABUT NEW EXISTING FOOTWAY, WITH NEAT STRAIGHT SAW CUT AT RIGHT ANGLES TO KERB AND LEVELS SHALL MATCH IN FLUSH.
 11. NO FIXTURES OR FOOTINGS OF NON-STANDARD PUBLIC DOMAIN ELEMENTS ARE PERMITTED TO ENCROACH OVER THE SITE BOUNDARY ONTO CITY PROPERTY.
- TREE PITS**
1. ALL PROPOSED TREE PITS TO DETAIL OF THE CITY OF SYDNEY. INTERNAL DIMENSION CONFORMING WITH THE STREET TREE DESIGN GUIDE. THE STREET TREE MASTERPLAN MAKE SURE THAT LOCATION OF TREE PIT IS PLACED TO THE NEAREST FULL EDGE PAVEMENT JOINT. PRIOR TO COMMENCEMENT OF WORK, CHECK EXACT SET-OUT OF TREE AND PAVEMENT LOCATION.
 2. PLANTING DETAIL 8 TO CONFORM WITH THE SPECIFICATIONS AND DETAILS WITHIN THE CITY OF SYDNEY STREET TREE MASTER PLAN. SPECIMENS MUST BE LOCATED IN CENTRE OF PIT AND THEIR EXACT SET-OUT IN THE FOOTWAY DETERMINED ON SITE BY COUNCIL OFFICERS/DEPENDANT ON FINAL SMARTPOLE LOCATION, PRIOR TO ANY EXCAVATION COMMENCING.
 3. REFER TO DWG 201855, DETAIL 4 FOR STREET TREE PIT DETAIL.
 4. A 6 MONTH SETTLEMENT AND PLANT ESTABLISHMENT PERIOD SHALL BE ALLOWED PRIOR TO INSTALLATION OF SETTS IN NEW TREE PITS.
 5. A REPORT SHALL BE PREPARED BY A SUITABLY QUALIFIED ARBORIST AND SUBMITTED TO COUNCIL FOR APPROVAL. PROVIDING NECESSARY PROTECTION MEASURES FOR THE ROOT ZONE, TRUNK AND CANOPY OF ALL EXISTING STREET TREES TO BE RETAINED, TOGETHER WITH A DETAILED METHODOLOGY OF HOW THE FOOTWAY UPGRADE WORKS ARE TO BE UNDERTAKEN WITHIN THE VICINITY OF THE TREE AND BY WHOM, IN ORDER TO MAINTAIN ITS ONGOING HEALTH AND VIGOUR.
- PAVING MARKERS & TACTILE INDICATORS**
1. PEDESTRIAN WARNING MARKERS SHALL BE 5/8 216 GRADE, 90 DEGREE TWIN, INSTALLED IN ACCORDANCE WITH COUNCIL STANDARDS.
 2. TACTILE INDICATORS ARE TO BE 316 MARINE GRADE SOLID 50 WITH REVERSE TAPERED SPIKE AND FINISHED 316 RESISTANT FACE TYPE AS SUPPLIED BY OTAC OR SIMILAR TO COUNCIL SPEC. 8 DETAILS TO COMPLY WITH A.S. 1428.4 AND BCA REQUIREMENT.
- KERB AND CONCRETE GUTTERS**
1. TO ACCOMMODATE THE TRANSFORMERS WEIGHT NEW GUTTERS WILL BE REQUIRED ADJACENT TO NEW DRIVEWAY CROSSOVERS. REFER DETAILS BY ENGINEER.
 2. EXISTING KERB TO BE SALVAGED AND REUSED. UNUSED STONE TO BE SOLD TO COUNCIL. REPLACEMENT STONE TO BE PROCURED FROM CITY OF SYDNEY STONE MAISON. CONTACT MATT SADLER PH: 9018 0406.
 3. SECTIONS OF EXISTING KERB AND GUTTERS IN GOOD CONDITION SHALL BE RETAINED, HOWEVER IF DURING THE PUBLIC DOMAIN WORKS, SUCH AS THE INSTALLATION OF THE NEW PEDESTRIAN PATHS, THEY ARE DAMAGED IN ANY WAY THEN MAKING GOOD OR PATCHING WILL NOT BE ACCEPTABLE AND NEW KERB AND GUTTERS SHALL BE INSTALLED TO CITY'S STANDARDS.
 4. SECTIONS OF EXISTING KERB AND GUTTERS WHICH ARE CRACKED, ETC. AND ARE NOT DEEMED IN GOOD CONDITION BY COUNCIL OFFICERS SHALL BE REPLACED IN ACCORDANCE WITH THE CITY'S STANDARDS.
 5. IF EXISTING KERB AND GUTTERS CANT BE NEATLY SAW-CUT STRAIGHT ALONG EXISTING EDGE OF GUTTER AND REMOVED, THEN A MINIMUM 300MM WIDE EDGE OF ROADWAY SHALL BE RE-INSTATED, TO MATCH LEVELS AND FINISH FLUSH INTO EXISTING DRIVEWAY. ALL TO BE CONSTRUCTED IN ACCORDANCE WITH THE CITY'S LATEST DETAILS AND ALL RELEVANT STANDARDS.
- SMARTPOLE STREET LIGHTING**
1. SMARTPOLE STREET LIGHTING INSTALLED TO COUNCIL'S LATEST DETAILS AND ALL RELEVANT STANDARDS.
 2. ELECTRICAL DETAIL 9 BY OTHERS.
 3. SET-OUT BY LANDSCAPE ARCHITECT.
 4. REFER STRUCTURAL DWGS FOR DETAILS OF SMARTPOLE FOOTINGS. REFER SECTION 3 APPENDIX 19 OF ENGINEER'S SPECIFICATION.
- NOTE:**
1. ALL THE NOTES ARE TO BE READ WITH THE CITY COUNCIL'S 'S' CONTINGUAL CONSENT.
 2. CONTACT MATTHEW DESER ON PH: 0285410 PRIOR TO COMMENCING WORKS ON THE PUBLIC DOMAIN IN REGARD TO ANY REQUIRED PERMITS. NOTE THAT NO PERMITS WILL BE ISSUED IN RELATION TO ANY PART OF THE PUBLIC DOMAIN WORKS OR RELATED INFRASTRUCTURE UNITS. FINAL APPROVAL OF THE PUBLIC DOMAIN PLANS IS PROVIDED BY THE CITY.
 3. ROLLING INSPECTIONS WILL BE UNDERTAKEN BY CITY OFFICERS DURING THE WORKS. A FINAL INSPECTION WILL BE REQUIRED BY THE CITY PRIOR TO HANDOVER.
 4. CONTACT NATHERINE REVELL (0417 7564) PRIOR TO COMMENCEMENT OF WORKS IN THE VICINITY OF THE PUBLIC DOMAIN TO ADVISE OF YOUR PROPOSED PROGRAM AND ARRANGE A SUITABLE TIME FOR ALL RELEVANT PARTIES TO ATTEND A 'PRE START ON-SITE' MEETING.
 5. REFER TO CITY OF SYDNEY ROAD AND FOOTWAY RESTORATION SPECIFICATION, SECTION 3, APPENDIX 19 FOR DETAILS OF MAKING GOOD EXISTING AND ADJOINING SURFACES.

1 REFER TO FACADE ENG'S DWGS FOR DETAILS OF EXTERNAL CLADDING SYSTEM & ARCHITECTURAL LOUVRES

LOVURE NUMBERS

LEVEL NO
LOUVRE NO
LOUVRE CONFIGURATION

- A ARCHITECTURAL LOUVRE - REFER TO FACADE ENG'S DWGS FOR DETAILS
- B SECURITY MESH - REFER ARCH DWG 201512 FOR DETAILS
- C VERNACULAR MESH - REFER ARCH DWG 201512 FOR DETAILS
- D MECHANICAL LOUVRE - REFER ARCH DWG 201512 FOR DETAILS
- E FIRE DAMPER - REFER TO EA MECH DWGS FOR DETAILS
- F BLANKING PANEL - REFER TO EA MECH DWGS

REFER TO LOUVRE SCHEDULE DWG 201511 FOR DETAILS

DOOR NUMBERS

100	LEVEL NO
001	

DOOR NO

REFER TO DOOR SCHEDULE DWG 201510 FOR DETAILS

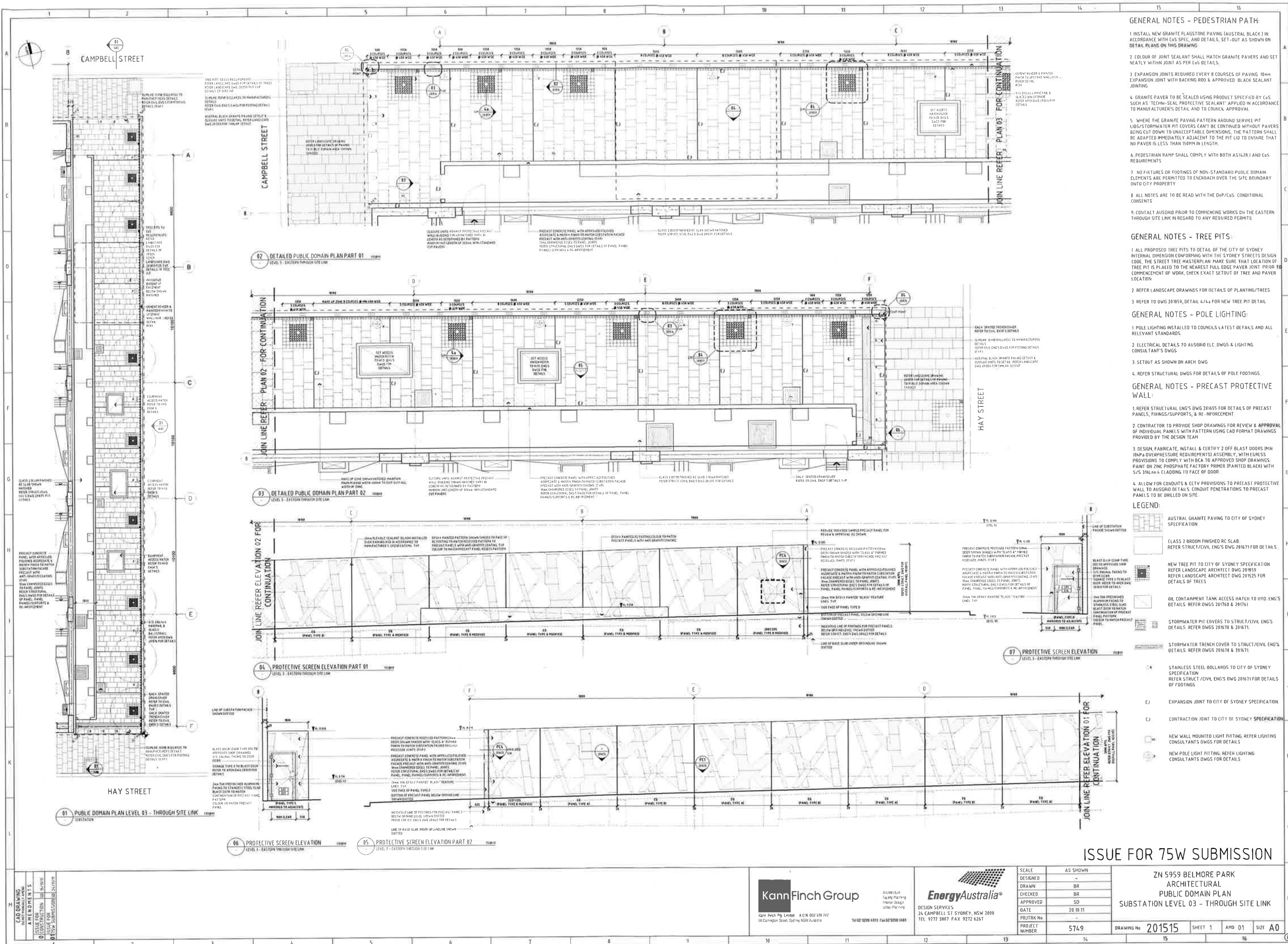
☐ EXTENT OF CONCRETE WALL WHERE ARCHITECTURAL LOUVRE OVERLAPS STRUCTURAL OPENING TO BE PAINTED "MATT BLACK"



ZN 5959 BELMORE PARK
ARCHITECTURAL
GENERAL ARRANGEMENT
SUBSTATION - EAST ELEVATION 2

SCALE	1:100
DESIGNED	-
DRAWN	MT
CHECKED	BR
APPROVED	SD
DATE	29.07.08
PRJTRK No	-
PROJECT NUMBER	5749

DRAWING No	201483	SHEET 1	AMD 03	SIZE A0
------------	--------	---------	--------	---------



GENERAL NOTES - PEDESTRIAN PATH:

1. INSTALL NEW GRANITE FLAGSTONE PAVING (AUSTRAL BLACK) IN ACCORDANCE WITH C&S SPEC, AND DETAILS, SET-OUT AS SHOWN ON DETAIL PLANS ON THIS DRAWING.
2. COLOUR OF JOINT SEALANT SHALL MATCH GRANITE PAVERS AND SET NEATLY WITHIN JOINT AS PER C&S DETAILS.
3. EXPANSION JOINTS REQUIRED EVERY 8 COURSES OF PAVING. 10mm EXPANSION JOINT WITH BACKING ROD & APPROVED BLACK SEALANT JOINTING.
4. GRANITE PAVES TO BE SEALED USING PRODUCT SPECIFIED BY C&S SUCH AS 'TECHNI-SEAL PROTECTIVE SEALANT' APPLIED IN ACCORDANCE TO MANUFACTURER'S DETAIL AND TO COUNCIL APPROVAL.
5. WHERE THE GRANITE PAVING PATTERN AROUND SERVICE PIT LIDS/STORMWATER PIT COVERS CAN'T BE CONTINUED WITH PAVERS BEING CUT DOWN TO UNACCEPTABLE DIMENSIONS, THE PATTERN SHALL BE ADAPTED IMMEDIATELY ADJACENT TO THE PIT LID TO ENSURE THAT NO PAVES ARE LESS THAN 150mm IN LENGTH.
6. PEDESTRIAN RAMP SHALL COMPLY WITH BOTH AS1428.1 AND C&S REQUIREMENTS.
7. NO FIXTURES OR FOOTINGS OF NON-STANDARD PUBLIC DOMAIN ELEMENTS ARE PERMITTED TO ENCRACH OVER THE SITE BOUNDARY ONTO CITY PROPERTY.
8. ALL NOTES ARE TO BE READ WITH THE D&P/C&S (CONDITIONAL) COMMENTS.
9. CONTACT AUSGRID PRIOR TO COMMENCING WORKS ON THE EASTERN THROUGH SITE LINK IN REGARD TO ANY REQUIRED PERMITS.

GENERAL NOTES - TREE PITS:

1. ALL PROPOSED TREE PITS TO DETAIL OF THE CITY OF SYDNEY INTERNAL DIMENSION CONFORMING WITH THE SYDNEY STREETS DESIGN CODE. THE STREET TREE MASTERPLAN MAKE SURE THAT LOCATION OF TREE PIT IS PLACED TO THE NEAREST FULL EDGE PAVES JOINT PRIOR TO COMMENCEMENT OF WORK, CHECK EXACT SETOUT OF TREE AND PAVES LOCATION.
2. REFER LANDSCAPE DRAWINGS FOR DETAILS OF PLANTING/TREES.
3. REFER TO DWG 201659, DETAIL 4/4a FOR NEW TREE PIT DETAIL.

GENERAL NOTES - POLE LIGHTING:

1. POLE LIGHTING INSTALLED TO COUNCILS LATEST DETAILS AND ALL RELEVANT STANDARDS.
2. ELECTRICAL DETAILS TO AUSGRID ELC DWGS & LIGHTING CONSULTANT'S DWGS.
3. SETOUT AS SHOWN ON ARCH DWG.
4. REFER STRUCTURAL DWGS FOR DETAILS OF POLE FOOTINGS.

GENERAL NOTES - PRECAST PROTECTIVE WALL:

1. REFER STRUCTURAL ENG'S DWG 201655 FOR DETAILS OF PRECAST PANELS, FIXINGS/SUPPORTS, & RE-INFORCEMENT.
2. CONTRACTOR TO PROVIDE SHOP DRAWINGS FOR REVIEW & APPROVAL OF INDIVIDUAL PANELS WITH PATTERN USING CAD FORMAT DRAWINGS PROVIDED BY THE DESIGN TEAM.
3. DESIGN, FABRICATE, INSTALL & CERTIFY 2 OFF BLAST DOORS (MIN 10kPa OVERPRESSURE REQUIREMENTS) ASSEMBLY, WITH EGRESS PROVISIONS TO COMPLY WITH BCA TO APPROVED SHOP DRAWINGS PAINT ON ZINC PHOSPHATE FACED PRIMER (PAINTED BLACK) WITH 5/5 S180m4 CLADDING TO FACE OF DOOR.
4. ALLOW FOR CONDUITS & CCTV PROVISIONS TO PRECAST PROTECTIVE WALL TO AUSGRID DETAIL: CONDUIT PENETRATIONS TO PRECAST PANELS TO BE DRILLED ON SITE.

LEGEND:

- AUSTRAL GRANITE PAVING TO CITY OF SYDNEY SPECIFICATION
- CLASS 2 BROOM FINISHED RC SLAB REFER STRUCT/CIVIL ENG'S DWG 201671 FOR DETAILS
- NEW TREE PIT TO CITY OF SYDNEY SPECIFICATION REFER LANDSCAPE ARCHITECT DWG 201859 REFER LANDSCAPE ARCHITECT DWG 201525 FOR DETAILS OF TREES
- OIL CONTAMINATION TANK ACCESS HATCH TO HYD. ENG'S DETAILS REFER DWGS 201769 & 201761
- STORMWATER PIT COVERS TO STRUCT/CIVIL ENG'S DETAILS REFER DWGS 201670 & 201671
- STORMWATER TRENCH COVER TO STRUCT/CIVIL ENG'S DETAILS REFER DWGS 201670 & 201671
- STAINLESS STEEL BOLLARDS TO CITY OF SYDNEY SPECIFICATION REFER STRUCT/CIVIL ENG'S DWG 201671 FOR DETAILS OF FOOTINGS
- EXPANSION JOINT TO CITY OF SYDNEY SPECIFICATION
- CONTRACTION JOINT TO CITY OF SYDNEY SPECIFICATION
- NEW WALL MOUNTED LIGHT FITTING REFER LIGHTING CONSULTANTS DWGS FOR DETAILS
- NEW POLE LIGHT FITTING REFER LIGHTING CONSULTANTS DWGS FOR DETAILS

ISSUE FOR 75W SUBMISSION

KannFinch Group

Architect
Facility Planning
Interior Design
Landscape Planning

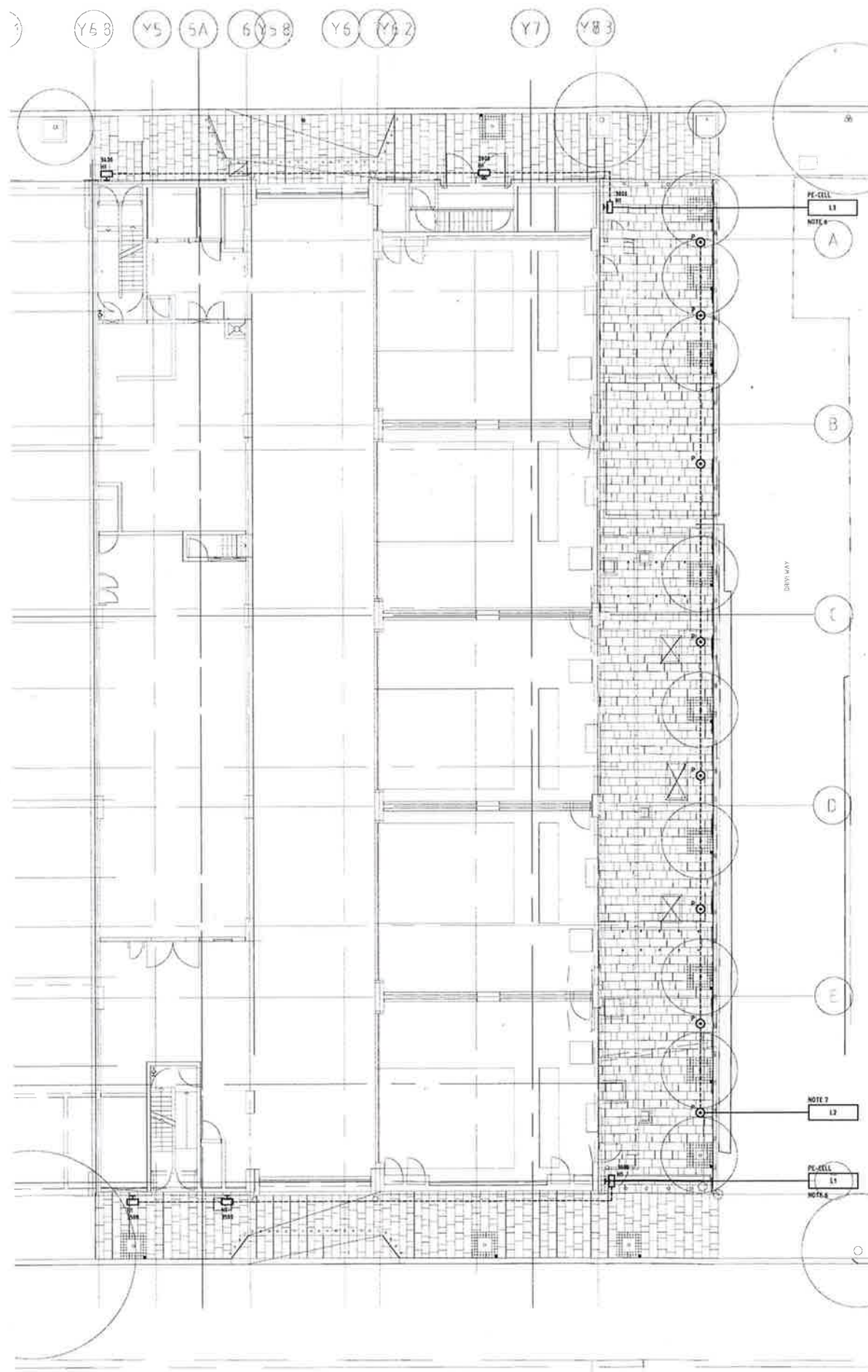
EnergyAustralia®

DESIGN SERVICES
24 CAMPBELL ST SYDNEY, NSW 2000
TEL 9272 3807 FAX 9272 6267

SCALE	AS SHOWN
DESIGNED	BR
DRAWN	BR
CHECKED	SD
APPROVED	SD
DATE	20.10.11
PROJECT No.	PRJTRK No.
PROJECT NUMBER	5749

ZN 5959 BELMORE PARK ARCHITECTURAL PUBLIC DOMAIN PLAN SUBSTATION LEVEL 03 - THROUGH SITE LINK			
DRAWING No	201515	SHEET 1	AMD 01
SIZE	A0		

PROJECT: ZN 3959 BELMORE PARK
SUBMITTAL: SUBMITTAL 1
DATE: 23.11.11
DRAWN BY: SIMON CHU
CHECKED BY: BILLY CHAN
APPROVED BY: SIMON CHU
PROJECT NO: 5769
SHEET NO: 01



- NOTES:
- THIS DRAWING SHALL BE READ IN CONJUNCTION WITH ARCHITECTURAL DRAWINGS, SPECIFICATIONS AND ALL OTHER RELEVANT SERVICES DRAWINGS.
 - ALL EQUIPMENT AND ACCESSORIES SHALL BE NEW.
 - FINAL POSITION OF ALL EQUIPMENT SHALL BE CO-ORDINATED ON SITE PRIOR TO INSTALLATION.
 - RATINGS AND TERMINATIONS OF ALL EQUIPMENT TO BE CONFIRMED WITH SUPPLIER/MANUFACTURERS RECOMMENDATIONS PRIOR TO INSTALLATION.
 - ALL WORKS SHALL BE CARRIED OUT IN ACCORDANCE WITH AUSTRALIAN STANDARDS AS3000 WIRING RULES.
 - LIGHTING SHALL BE SUPPLIED FROM THE SUBSTATION BY PANEL BOARD AND SWITCH ON/OFF VIA PE-CELL CONTROL, SWITCHING ON AT DUSK AND OFF AT DAWN.
 - TYPE P POLE TOP LUMINAIRES SHALL BE SUPPLIED AND CONNECTED TO THE NEAREST EXISTING STREETLIGHT CIRCUIT, SO THAT THE LIGHTING SHALL SWITCH ON AND OFF TOGETHER.

LEGEND			
TYPE	MANUFACTURER	DESCRIPTION	LAMP
W	WET-CLIP	IP65 RATED EXTERIOR WALL SURFACE MOUNTED LUMINAIRE WITH ASYMMETRIC, SIDE-THROW DISTRIBUTION, MARINE GRADE DIE-CAST ALUMINUM ALLOY, CORROSION RESISTANT, SILICONE RUBBER GASKETS, SAFETY GLASS, ANODIZED ALUMINUM REFLECTOR, QUARTER CIRCLE PROFILE WITH NO UPWARD LIGHT DISTRIBUTION, 220mm WIDE x 220mm DEEP x 220mm HIGH ELECTRONIC CONTROL GEAR.	1 x 35W HT-CE METAL HALIDE 4000°K
P	ARCHITECTURAL AREA LIGHTING AIL L'ARGENT SLVTTLED	IP65 RATED POLE TOP LUMINAIRE ON 6m HIGH STREET POLE TO CITY OF SYDNEY STANDARDS, TYPE 3 SPECULAR REFLECTOR AND FLAT GLASS LENS, FOR ASYMMETRIC SIDE-THROW DISTRIBUTION, ELECTRONIC DRIVER.	60W LED 5000°K

ISSUE FOR 75W SUBMISSION

REVISIONS
1. 23.11.11
2. 23.11.11
3. 23.11.11
4. 23.11.11
5. 23.11.11
6. 23.11.11
7. 23.11.11
8. 23.11.11
9. 23.11.11
10. 23.11.11
11. 23.11.11
12. 23.11.11
13. 23.11.11
14. 23.11.11
15. 23.11.11
16. 23.11.11

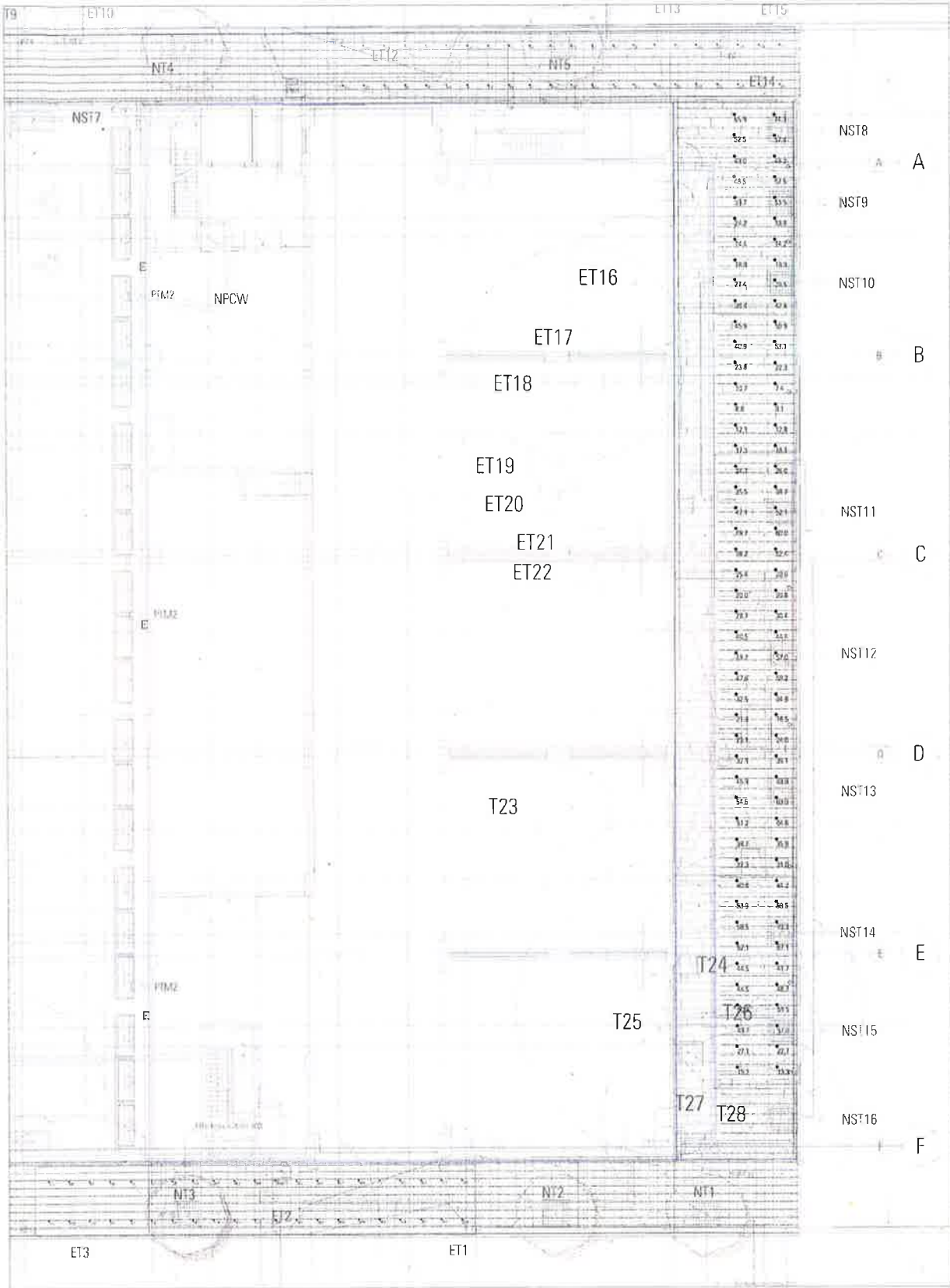
WIRING AUSTRALIA GROUP (PVT) LIMITED
100/101 KIRKPATRICK ROAD, SYDNEY NSW 2000
TELEPHONE: 02 9299 4111 FAX: 02 9299 1481
WWW.WIRINGAUSTRALIA.COM.AU

KannFinch Group
Kann Finch Pty Limited A.C.N. 102 170 747
50 Carrington Street, Sydney NSW Australia
Tel 02 9299 4111 Fax 02 9299 1481

EnergyAustralia
DESIGN SERVICES
24 CAMPBELL ST SYDNEY, NSW 2000
TEL: 9272 3007 FAX: 9272 6287

SCALE: 1:100
DESIGNED: SIMON CHU
DRAWN: BILLY CHAN
CHECKED: SIMON CHU
APPROVED: SIMON CHU
DATE: 23.11.11
PROJECT NO: 5769
PROJECT NUMBER: 5769





ZN 3959 BELMORE PARK
SUBSTATION EXTERNAL LIGHTING
PEDESTRIAN LIGHTING PLAN
DRAWING No: SHEET 01 AND 02 SIZE A0



LIGHTING DESIGN DISCLAIMER:

WEBB'S LIGHTING CALCULATIONS AND ASSESSMENT HAVE BEEN PRODUCED USING A COMPUTER MODEL. WHILE WE USE MOST SOPHISTICATED SOFTWARE, THE PROGRAMS OPERATE WITHIN THE LIMITATIONS OF THE PHOTOMETRIC DATA SUPPLIED BY MANUFACTURER, CALCULATION ALGORITHMS AND ASSUMPTIONS OF THE MODEL. THE RESULTS GIVE AN EXCELLENT INDICATION OF THE RELATIVITY AND MAGNITUDE OF ILLUMINANCE, HOWEVER, IT MUST BE EMPHASISED THAT THE FIGURES ARE DERIVED FROM A MODEL AND THE LEVELS MAY NOT EXACTLY CORRESPOND WITH ACTUAL MEASUREMENTS. THE CALCULATIONS ASSUME SURFACE FINISHES AND MAY NOT ALLOW FOR ACTUAL REFLECTANCE AND AMBIENT LIGHT, OR FOR SHADING OR OTHER BLOCKING OBJECTS.

Numeric Summary							
Label	Units	Avg	Max	Min	PtSpcLr	PtSpcTb	Max/Avg
Campbell St Footpath_Top	Lux	47.10	84	15	0.2	0.4	1.78
Campbell St Vertical	Lux	20.48	130	4.2	1.05	2	6.34
Hay St Footpath_Top_1	Lux	46.82	90.4	17.0	0.2	0.4	1.93
Hay St Vertical	Lux	24.23	83.1	5.5	1.05	2	3.43
Pedestrian Link Vertical	Lux	38.39	74.3	7.4	2	1.05	1.94
Pedestrian Link_Top_1	Lux	38.38	84.5	12.5	0.4	0.5	2.20

Luminaire Schedule						Total Lamp Lumens	Lum. Watts
Symbol	Qty	LLF	Description				
	3	0.700	Sylvania Nightstar (from previous design)			6000	77
	6	0.700	Rexel Optispan on CoS 9m SmartPole (as per previou			40000	440
	8	0.800	AAL L'Argent SLVT-T3-60LED-BW			N.A.	71.7
	6	0.700	we-ef-olv330-132-0334			3500	43

Exterior lighting design to AS2293.3.1
P1 subcategory parameters:
Eh = 7 lx
Eph = 2 lx
Ue2 < 10
Epv = 4 lx (City of Sydney requirements)

Reflectances:
Walls = 0.5
Ground = 0.2



WE-EF OLV330A



AAL L'Argent