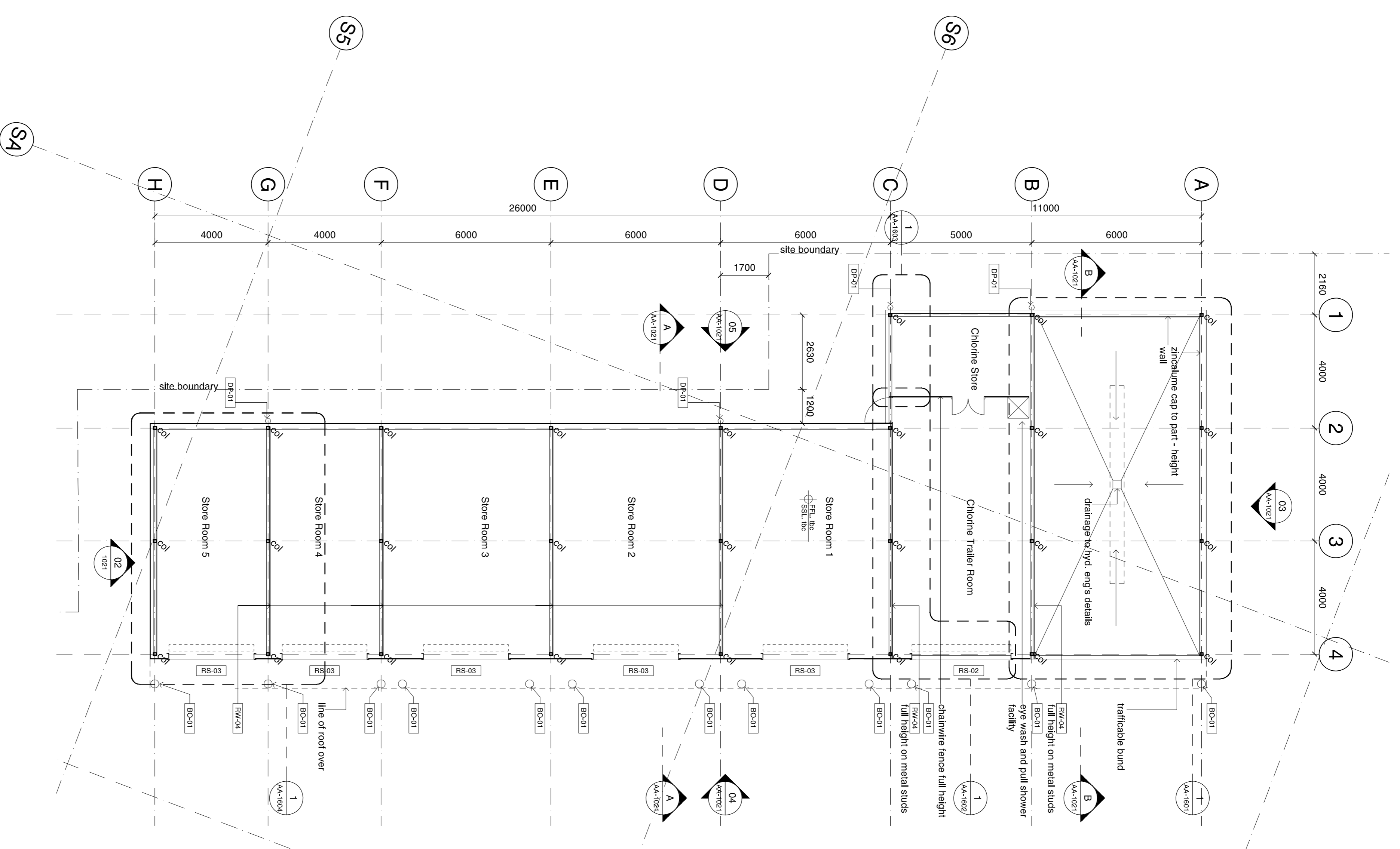
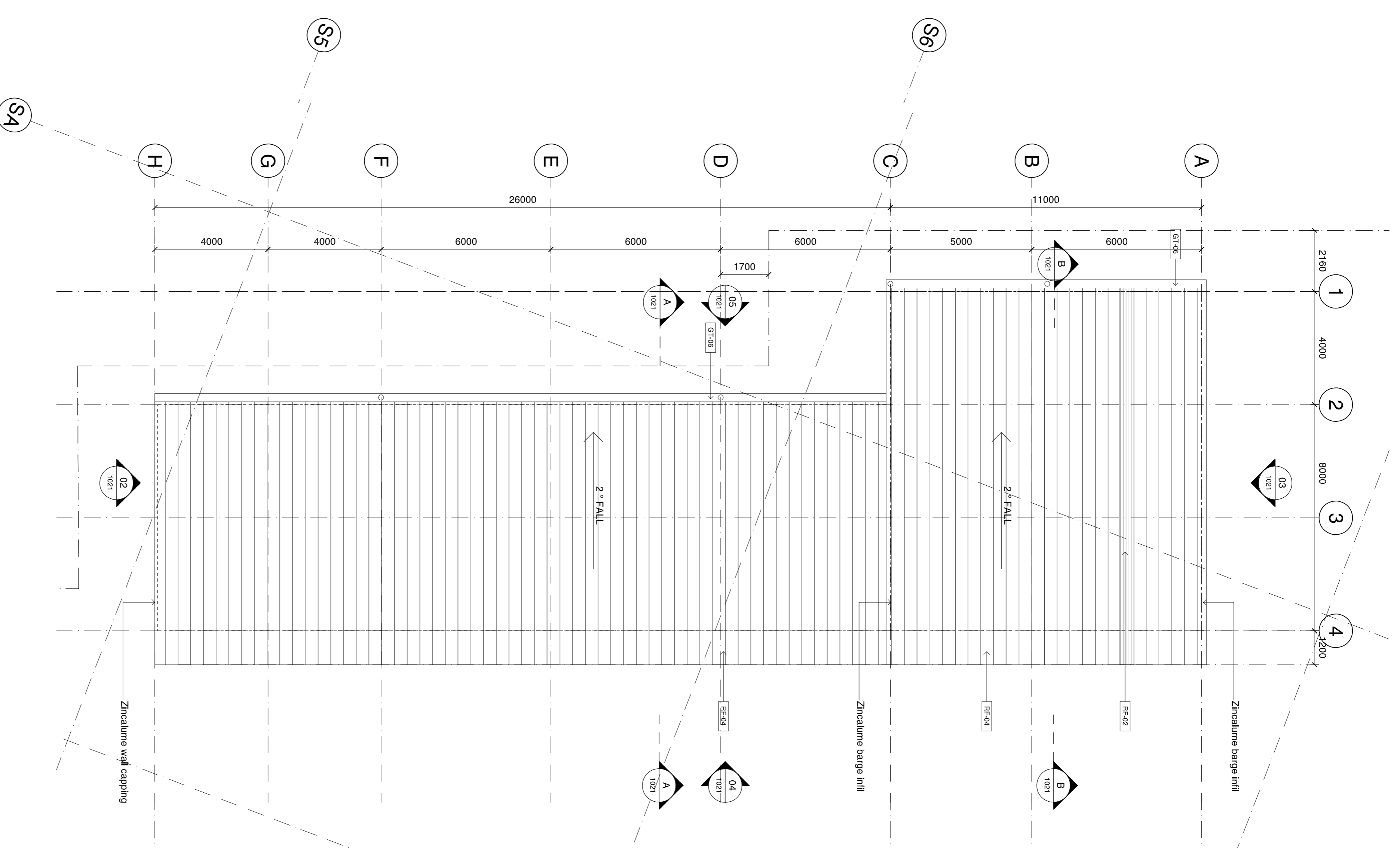


01 Concrete Outline Plan
1:100



02 Floor Plan
1:100



03 Roof Plan
1:100

Concept Design Review by Sydney Water
 Concept accepted:
 By: _____
 Date: _____

Document Review Stamp
 Checked by: _____
 Approved by: _____
 Date: _____

Rev.	Date	Description	By	Check
1	14/01/09	FOR FACADES + ROOFING TENDER	JT	RM
2	09/02/09	FOR FACADES + ROOFING TENDER	JT	RM
3	09/02/09	FOR STORES WATER REVIEW	JT	RM

Revision Summary
 - Revision 1, 2, 3 site house
 - Revision added



Sydney Water
 Potts Hill
 Truck Wash / Storage Sheds
 Plans

Scale: 1:100 @ B1 & 1:250 @ A3
 Drawn: JT
 Project No: S10955
 Status: Design Development
 Rev. Date: 9/3/2009 9:28:25 AM
 Rev. File: S:\10955\10955\10955_SWD_POTTS_HILL_03.dwg
 Drawing Title: TRUCK WASH / STORAGE SHEDS
 Project No: AA-1020
 Revision: 3

NOT FOR CONSTRUCTION

Melbourne 1 Nicholson Street
 East Sydney NSW 2010 Australia
 email: melb@batesmart.com.au
 http://www.batesmart.com.au

Sydney 1724 Liverpool Street
 East Sydney NSW 2010 Australia
 email: syd@batesmart.com.au
 http://www.batesmart.com.au

Bates Smart Pty Ltd ABN 70 004 989 400

BATESSMART