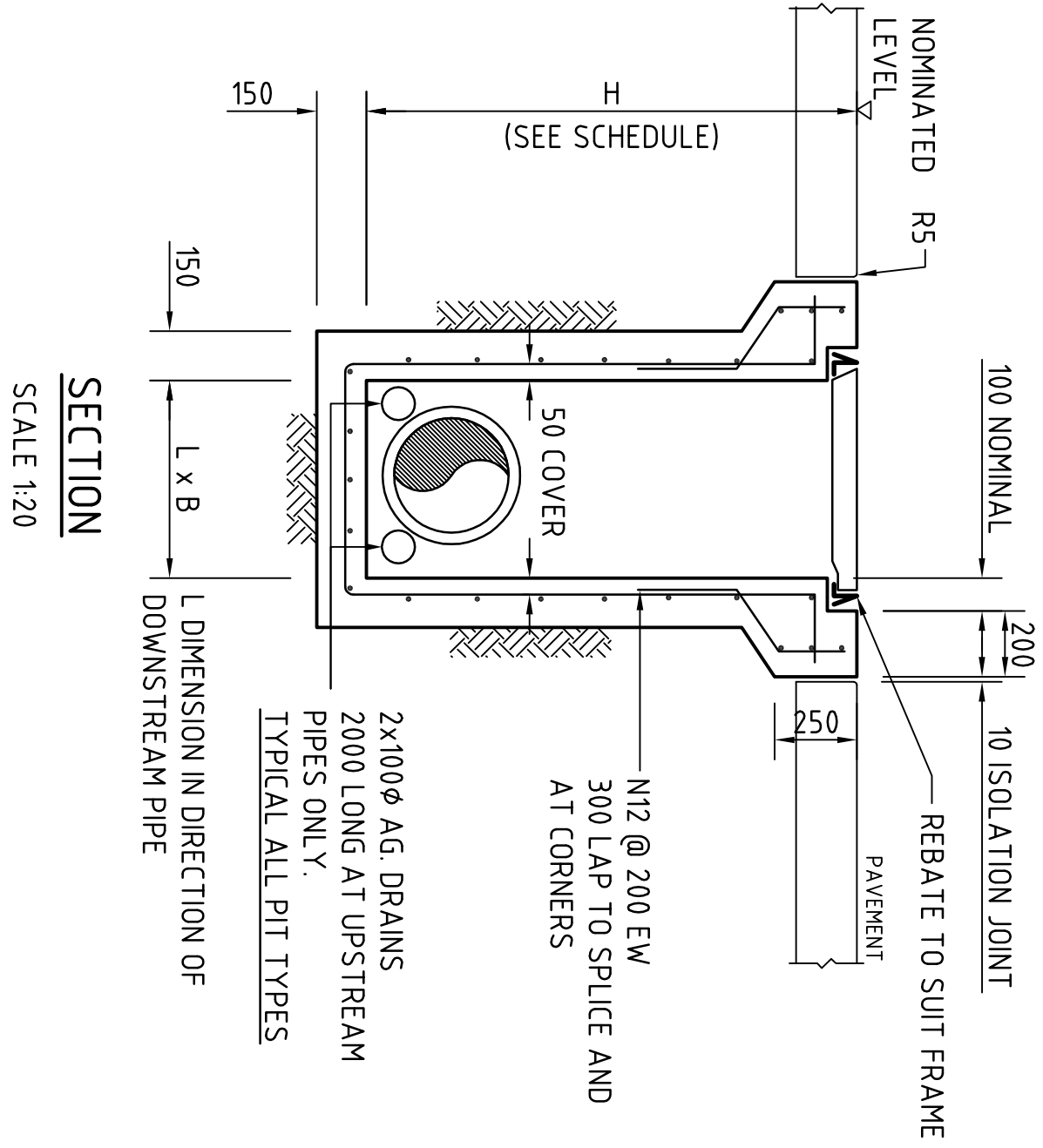
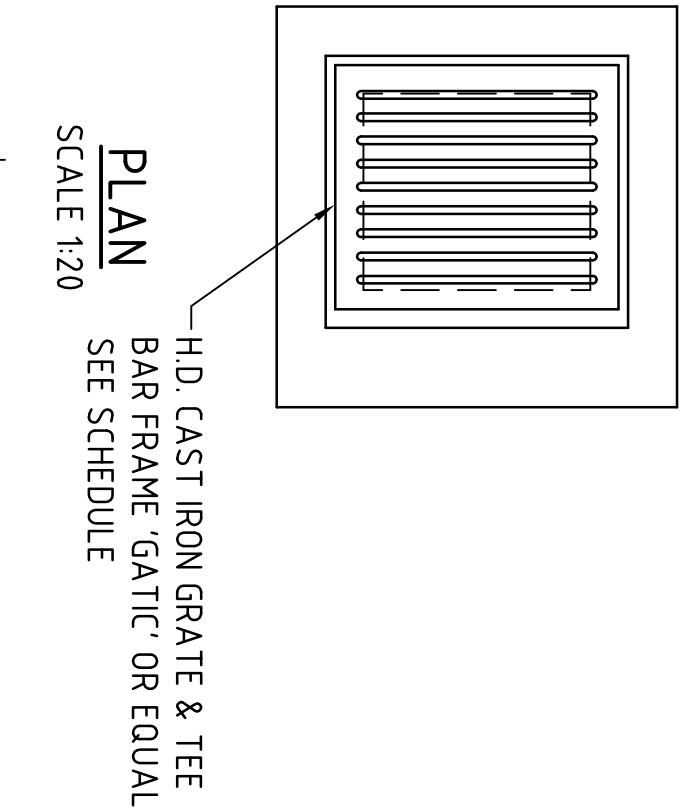
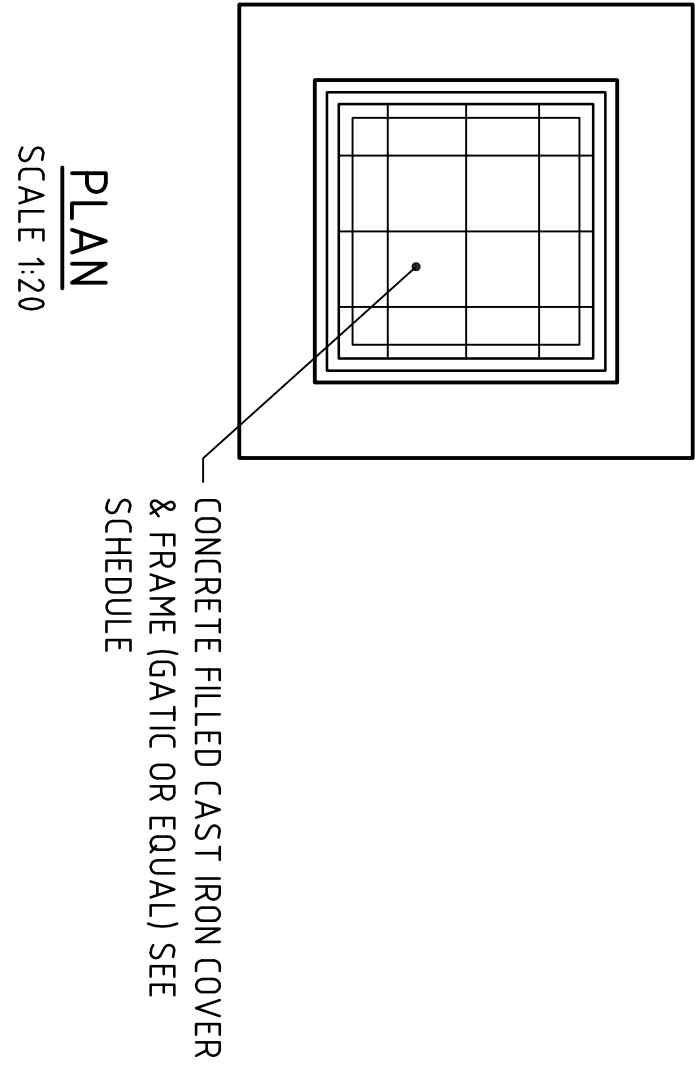


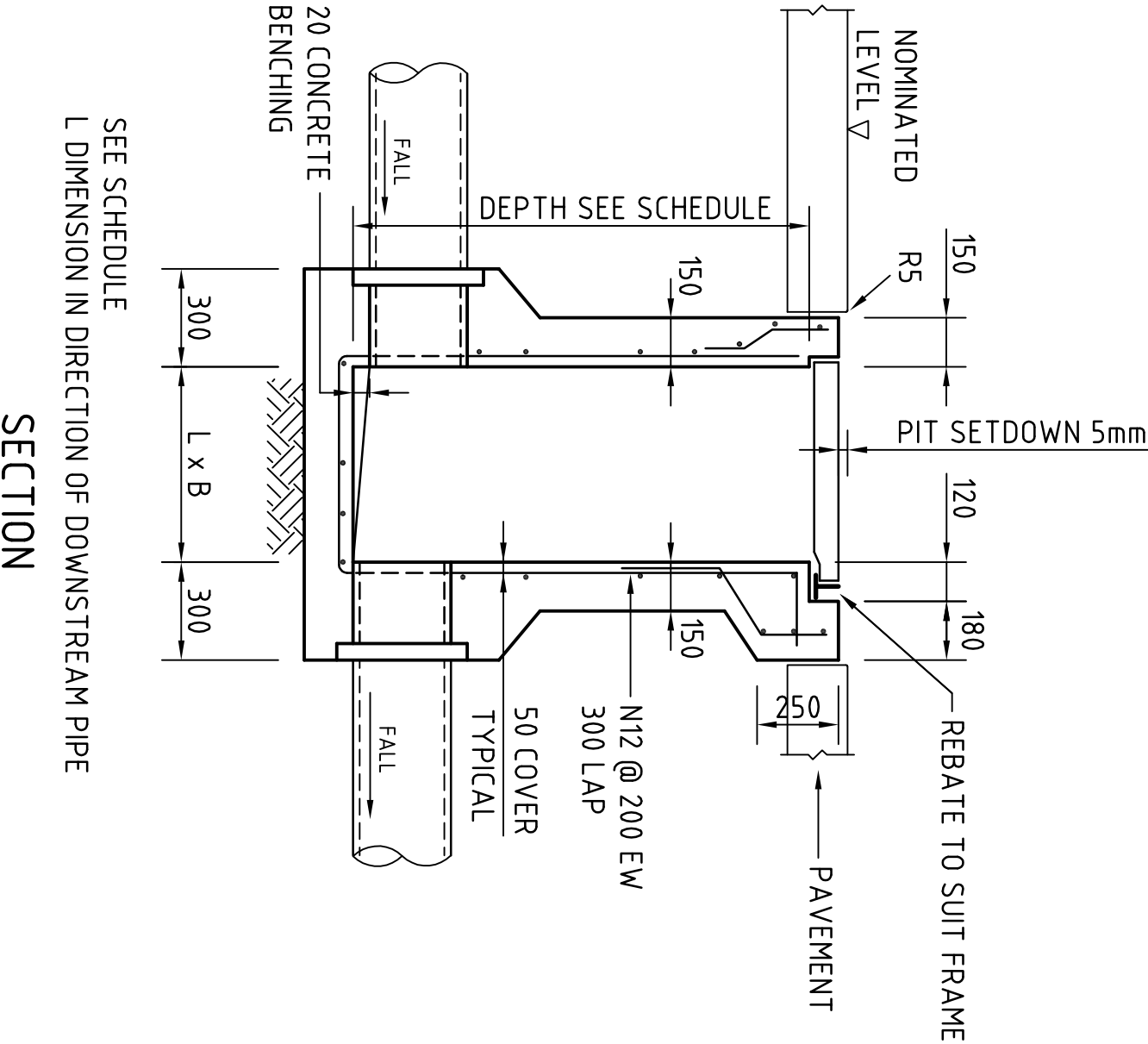
CONCRETE QUALITY				
ELEMENT	SLUMP	COMPRESSIVE STRENGTH	AD MIXTURE	F _{cu}
PIT	80	20	GP	NIL
				25

PIT NOTES:

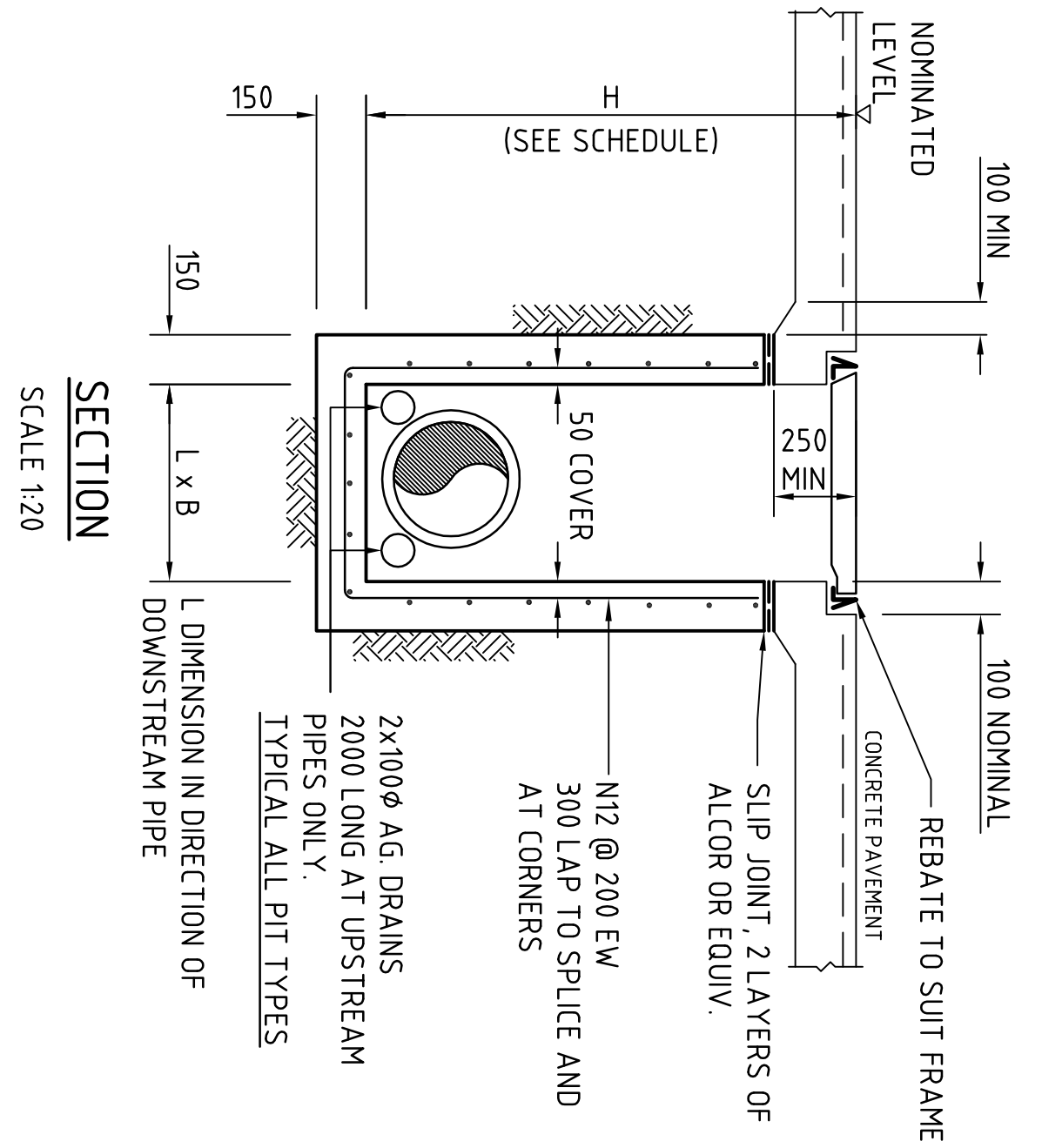
- WHERE GULLY PIT IS LOCATED ON KERB RETURNS OR BULB OF CUR-DE-SACS PROVIDE CURVED PRECAST CONCRETE LINTELS.
- SAG PIT'S SHALL HAVE LINTEL PLACED CENTRALLY ABOUT THE GRATE.
- ALL REINFORCING TO HAVE 30 MIN. CLEAR CONCRETE COVER.
- FOR PIT'S DEEPER THAN 1000mm CLIMB RAILS SHALL BE PROVIDED.



SEALED PIT - SJP



SINGLE GRATED GULLY PIT - SGGP



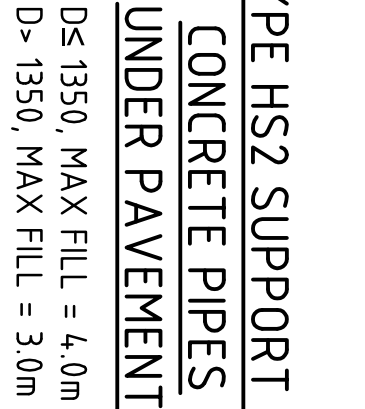
ALTERNATIVE PIT DETAIL
GRATE/COVER SUPPORT
CAST-INTO PAVEMENT SLAB
(ADOPT AS REQUIRED FOR SGGP's & SJP's)

BEDDING & HAUNCH MATERIAL GRADING	
SIEVE SIZE	WEIGHT PASSING(%)
19	100
2.36	100 TO 50
0.60	90 TO 20
0.30	60 TO 10
0.15	25 TO 0
0.075	10 TO 0

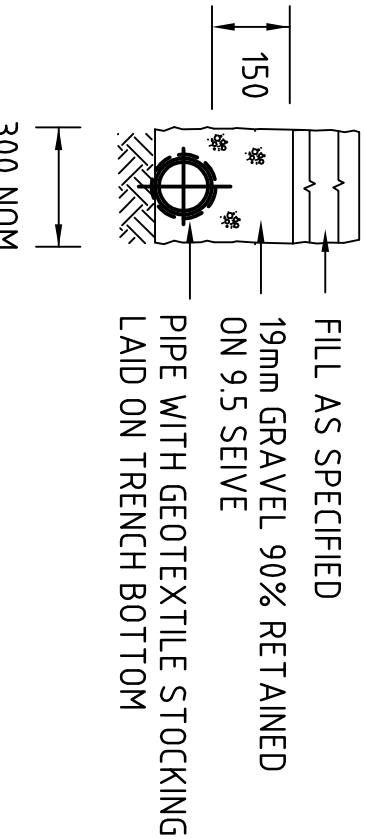
SIDE ZONE MATERIAL GRADING	
SIEVE SIZE	WEIGHT PASSING(%)
75	100 TO 50
9.5	100 TO 20
2.36	50 TO 25
0.60	25 TO 0
0.075	25 TO 0

SELECT FILL MATERIAL IN ACCORDANCE WITH
TABLE 1 AS 3725

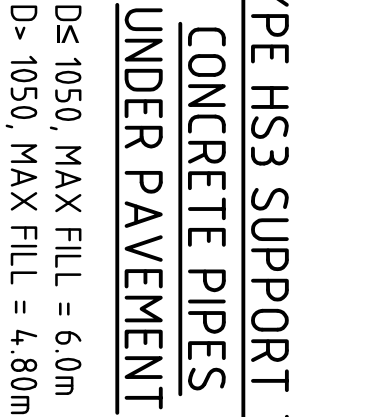
TYPE HS2 SUPPORT TO
CONCRETE PIPES
UNDER PAVEMENT



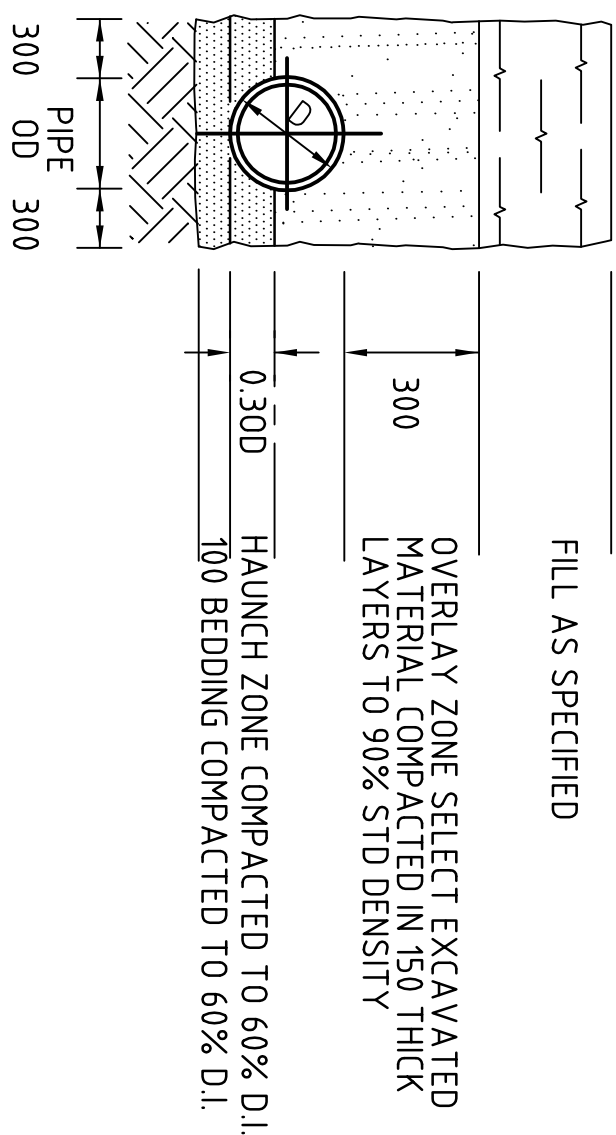
SUPPORT TO AG. DRAIN



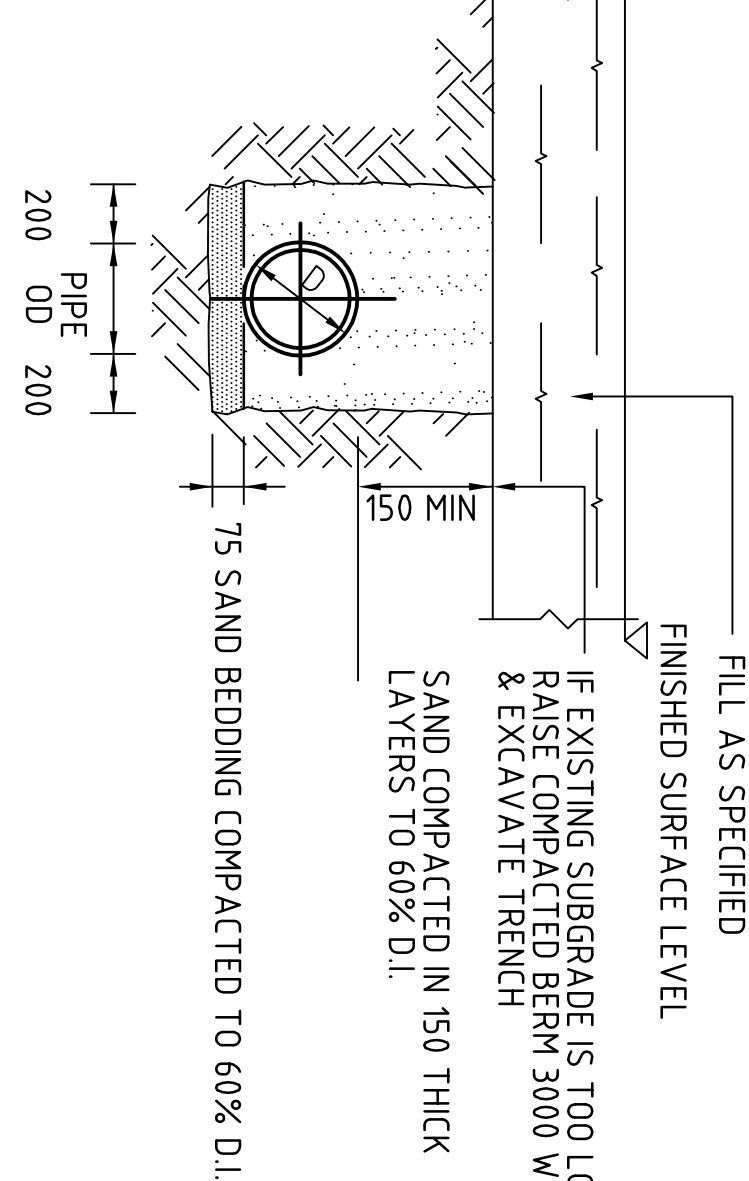
TYPE HS3 SUPPORT TO
CONCRETE PIPES
UNDER PAVEMENT



TYPE H1 SUPPORT TO
CONCRETE PIPES AT LANDSCAPED AREAS



SUPPORT TO UPVC PIPES



PIPE LAYING DETAILS

FOR S75W APPLICATION

FOR S75W APPLICATION
FOR INFORMATION ONLY

7.11.12
30.10.12

A
B

AMENDMENTS

ARCHITECT
AXIS ARCHITECTURE
4 / 112 GROUNDULA
GROUNDULA, NSW 2230

CLIENT
LOGOS PROPERTY GROUP
SUITE 1202 / 161 MACQUARIE STREET
SYDNEY, NSW 2000

PROJECT
PROPOSED WAREHOUSE
SUPER RETAIL GROUP
133-145 LENORE LANE, ERSKINE PARK, NSW

DESIGNED BY
H.W.
DATE
26.10.12

CHECKED BY
H.C.
DATE
26.10.12

SCALE
B1 AS SHOWN

QDA REF:
G01888-00-146

COSTIN ROE CONSULTING PTY LTD
Consulting Engineers
Level 1, 8 Windmill Street
Maitland Bay, Sydney NSW 2000
Phone: 02 9550 4444
email: maitland@costinroe.com.au @

Volume In Engineering and Management

DRAWING TITLE
CONCEPT STORMWATER DETAILS
SHEET 1

DRAWING No
C011888-00-C46

ISSUE
B