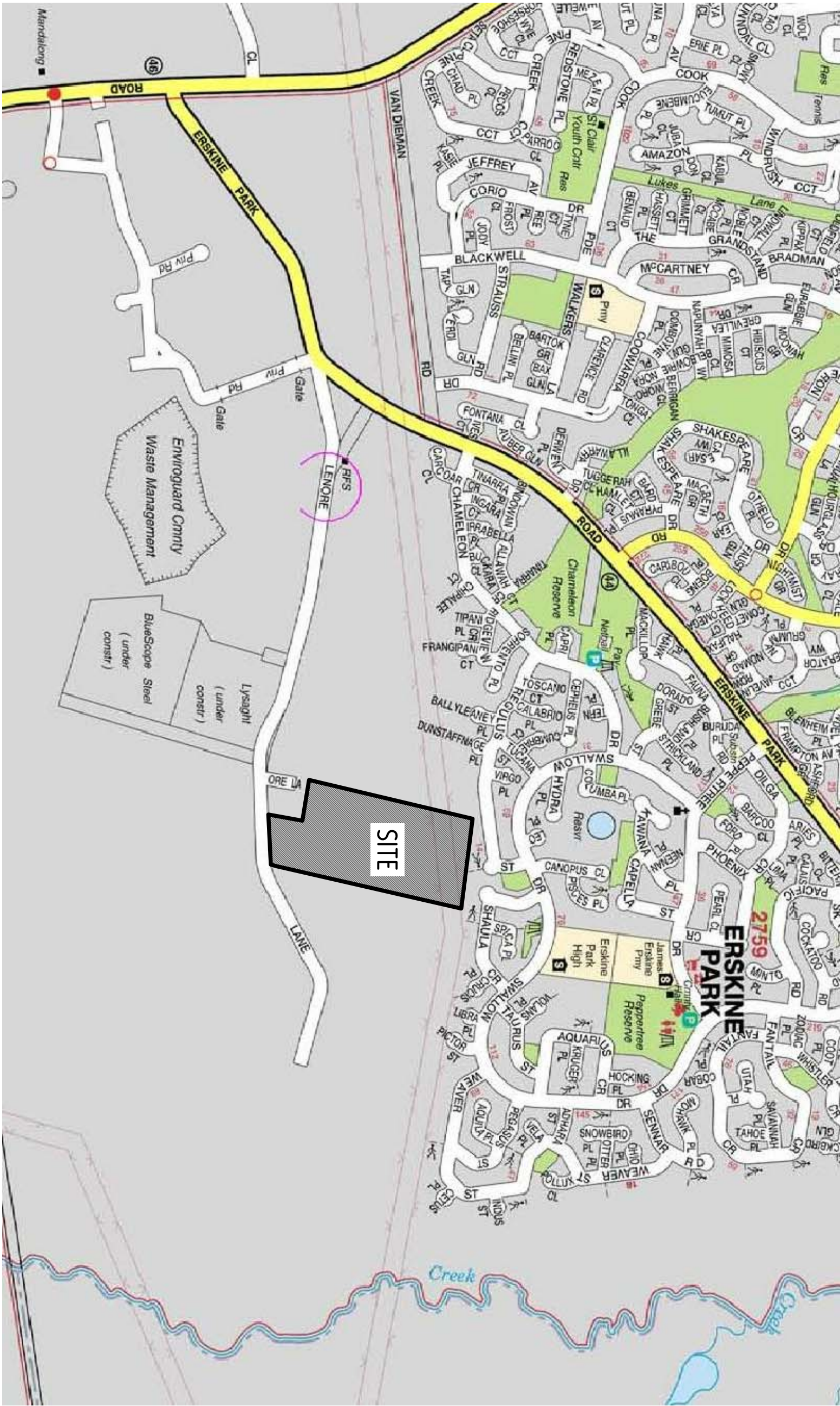
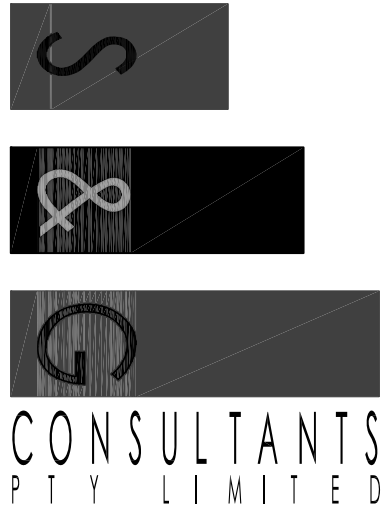


MAJOR PROJECT APPLICATION

PROPOSED INDUSTRIAL DEVELOPMENT

LOT 62 DP 1090695, LENORE DRIVE, ERSKINE PARK, NSW

STORMWATER DRAINAGE WORKS



LOCALITY PLAN

- LIST OF DRAWINGS**
- SW100 COVER SHEET - SITE LOCALITY
 - SW101 STORMWATER DRAINAGE CONCEPT PLAN - SITE LAYOUT PLAN - SHEET 1 OF 5
 - SW102 STORMWATER DRAINAGE CONCEPT PLAN - SITE LAYOUT PLAN - SHEET 2 OF 5
 - SW103 STORMWATER DRAINAGE CONCEPT PLAN - SITE LAYOUT PLAN - SHEET 3 OF 5
 - SW104 STORMWATER DRAINAGE CONCEPT PLAN - SITE LAYOUT PLAN - SHEET 4 OF 5
 - SW105 STORMWATER DRAINAGE CONCEPT PLAN - SITE LAYOUT PLAN - SHEET 5 OF 5
 - SW106 STORMWATER DRAINAGE CONCEPT PLAN - DETAILS SHEET 1 OF 2
 - SW107 STORMWATER DRAINAGE CONCEPT PLAN - DETAILS SHEET 2 OF 2
 - SW108 STORMWATER DRAINAGE CONCEPT PLAN - CATCHMENT PLAN
 - SW109 EROSION & SEDIMENT CONTROL PLAN - SITE LAYOUT PLAN - SHEET 1 OF 2
 - SW110 EROSION & SEDIMENT CONTROL PLAN - SITE LAYOUT PLAN - SHEET 2 OF 2 - TYPICAL DETAILS


Drawing Title			
COVER SHEET			
SITE LOCALITY			
Project No.	Drawing No.	Revision No.	
07081	SW100	B	
Sheet	1 of 11	Name	E.A.



Exercise completion ranking				
Discipline	Drawing Title and Number	Date	Rank	
Architecture	DA-001 - Site PLAN	7/23/19	6	
Structure				
Mechanical				
Survey	TR-001	3/6/19	-	
Hydraulic				

QUALITY CONTROL		
	INITIALS	SIGNATURE
DRAFTED		DATE
DESIGNED		
VERIFIED		
APPROVED		

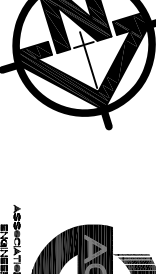
CONSULTING ENGINEER


S&G CONSULTANTS PTY LIMITED
CONSULTANTS IN CIVIL AND
STRUCTURAL ENGINEERING

Suite 4, Level 1, 41-45 PACIFIC HIGHWAY
WATKINS NSW 2077
T: (02) 948 5777 F: (02) 9487 5733
Email: same@spectra.com.au

A.B.N. 21 189 222 530

MAJOR PROJECT APPLICATION FOR PRINTING,
WAREHOUSE & DISTRIBUTION FACILITY
LOT 62 DP 1096095 LENORE DRIVE, BECKING PARK
Drawing Title
STORMWATER DRAINAGE CONCEPT PLAN
SITE LAYOUT PLAN
SHEET 1 OF 5

Project No.	07081	Drawn No.	SW101	Revision No.	C
Date	11/25/01	Scale	As Bldg	Grid	MDA 56
Sheet	1 of 1	Grid	MDA 56	Outline	A.L.D.
		Station FOR APPROVAL			
WHEREAS THE DESIGN, DRAWINGS, SPECIFICATIONS AND THE CONSTRUCTION OF THE SOLE INTELLECTUAL PROPERTY OF SDC CONSULTANTS LTD AND THE CONSTRUCTION OF THE ALTRIS OR REPRODUCED WHATEVER IN ANY FORM OR BY ANY MEANS IN ANY MANNER WITHOUT THE WRITTEN CONSENT OF SDC CONSULTANTS					

[illegible]

REFER TO SW102 FOR CONTINUATION



--	--	--	--	--	--	--	--	--	--	--	--	--	--	--	--	--	--	--	--	--	--	--	--	--	--	--	--	--	--	--	--	--	--	--	--	--	--	--	--	--	--	--	--	--	--	--	--	--	--	--	--	--	--	--	--	--	--	--	--	--	--	--	--	--	--	--	--	--	--	--	--	--	--	--	--	--	--	--	--	--	--	--	--	--	--	--	--	--	--	--	--	--	--	--	--	--	--	--	--	--	--	--	--	--	--	--	--	--	--	--	--	--	--	--	--	--	--	--	--	--	--	--	--	--	--	--	--	--	--	--	--	--	--	--	--	--	--	--	--	--	--	--	--	--	--	--	--	--	--	--	--	--	--	--	--	--	--	--	--	--	--	--	--	--	--	--	--	--	--	--	--	--	--	--	--	--	--	--	--	--	--	--	--	--	--	--	--	--	--	--	--	--	--	--	--	--	--	--	--	--	--	--	--	--	--	--	--	--	--	--	--	--	--	--	--	--	--	--	--	--	--	--	--	--	--	--	--	--	--	--	--	--	--	--	--	--	--	--	--	--	--	--	--	--	--	--	--	--	--	--	--	--	--	--	--	--	--	--	--	--	--	--	--	--	--	--	--	--	--	--	--	--	--	--	--	--	--	--	--	--	--	--	--	--	--	--	--	--	--	--	--	--	--	--	--	--	--	--	--	--	--	--	--	--	--	--	--	--	--	--	--	--	--	--	--	--	--	--	--	--	--	--	--	--	--	--	--	--	--	--	--	--	--	--	--	--	--	--	--	--	--	--	--	--	--	--	--	--	--	--	--	--	--	--	--	--	--	--	--	--	--	--	--	--	--	--	--	--	--	--	--	--	--	--	--	--	--	--	--	--	--	--	--	--	--	--	--	--	--	--	--	--	--	--	--	--	--	--	--	--	--	--	--	--	--	--	--	--	--	--	--	--	--	--	--	--	--	--	--	--	--	--	--	--	--	--	--	--	--	--	--	--	--	--	--	--	--	--	--	--	--	--	--	--	--	--	--	--	--	--	--	--	--	--	--	--	--	--	--	--	--	--	--	--	--	--	--	--	--	--	--	--	--	--	--	--	--	--	--	--	--	--	--	--	--	--	--	--	--	--	--	--	--	--	--	--	--	--	--	--	--	--	--	--	--	--	--	--	--	--	--	--	--	--	--	--	--	--	--	--	--	--	--	--	--	--	--	--	--	--	--	--	--	--	--	--	--	--	--	--	--	--	--	--	--	--	--	--	--	--	--	--	--	--	--	--	--	--	--	--	--	--	--	--	--	--	--	--	--	--	--	--	--	--	--	--	--	--	--	--	--	--	--	--	--	--	--	--	--	--	--	--	--	--	--	--	--	--	--	--	--	--	--	--	--	--	--	--	--	--	--	--	--	--	--	--	--	--	--	--	--	--	--	--	--	--	--	--	--	--	--	--	--	--	--	--	--	--	--	--	--	--	--	--	--	--	--	--	--	--	--	--	--	--	--	--	--	--	--	--	--	--	--	--	--	--	--	--	--	--	--	--	--	--	--	--	--	--	--	--	--	--	--	--	--	--	--	--	--	--	--	--	--	--	--	--	--	--	--	--	--	--	--	--	--	--	--	--	--	--	--	--	--	--	--	--	--	--	--	--	--	--	--	--	--	--	--	--	--	--	--	--	--	--	--	--	--	--	--	--	--	--	--	--	--	--	--	--	--	--	--	--	--	--	--	--	--	--	--	--	--	--	--	--	--	--	--	--	--	--	--	--	--	--	--	--	--	--	--	--	--	--	--	--	--	--	--	--	--	--	--	--	--	--	--	--	--	--	--	--	--	--	--	--	--	--	--	--	--	--	--	--	--	--	--	--	--	--	--	--	--	--	--	--	--	--	--	--	--	--	--	--	--	--	--	--	--	--	--	--	--	--	--	--	--	--	--	--	--	--	--	--	--	--	--	--	--	--	--	--	--	--	--	--	--	--	--	--	--	--	--	--	--	--	--	--	--	--	--	--	--	--	--	--	--	--	--	--	--	--	--	--	--	--	--	--	--	--	--	--	--	--	--	--	--	--	--	--	--	--	--	--	--	--	--	--	--	--	--	--	--	--	--	--	--	--	--	--	--	--	--	--	--	--	--	--	--	--	--	--	--	--	--	--	--	--	--	--	--	--	--	--	--	--	--	--	--	--	--	--	--	--	--	--	--	--	--	--	--	--	--	--	--	--	--	--	--	--	--	--	--	--	--	--	--	--	--	--	--	--	--	--	--	--	--	--	--	--	--	--	--	--	--	--	--	--	--	--	--	--	--	--	--	--	--	--	--	--	--	--	--	--	--	--	--	--	--	--	--	--	--	--	--	--	--	--	--	--	--	--	--	--	--	--	--	--	--	--	--	--	--	--	--	--	--	--	--	--	--	--	--	--	--	--	--	--	--	--	--	--	--	--	--	--	--	--	--	--	--	--	--	--	--	--	--	--	--	--	--	--	--	--	--	--	--	--	--	--	--	--	--	--	--	--	--	--	--	--	--	--	--	--	--	--	--	--	--	--	--	--	--	--	--	--	--	--	--	--	--	--	--	--	--	--	--	--	--	--	--	--	--	--	--	--	--	--	--	--	--	--	--	--	--	--	--	--	--	--	--	--	--	--	--	--	--	--	--	--	--	--	--	--	--	--	--	--	--	--	--	--	--	--	--	--	--	--	--	--	--	--	--	--	--	--	--	--	--	--	--	--	--	--	--	--	--	--	--	--	--	--	--	--	--	--	--	--	--	--	--	--	--	--	--	--	--	--	--	--	--	--	--	--	--	--	--	--	--	--	--	--	--	--	--	--	--	--	--	--	--	--	--	--	--	--	--	--	--	--	--	--	--	--	--	--	--	--	--	--	--	--	--	--	--	--	--	--	--	--	--	--	--	--	--	--	--	--	--	--	--	--	--	--	--	--	--	--	--	--	--	--	--	--	--	--	--	--	--	--	--	--	--	--	--	--	--	--	--	--	--	--	--	--	--	--	--	--	--	--	--	--	--	--	--	--	--	--	--	--	--	--	--	--	--	--	--	--	--	--	--	--	--	--	--	--	--	--	--	--	--	--	--	--	--	--

REFERENCE		LOADING/UNLOADING		UNLOADING	
Discipline	Drawing Title and Number	Date	Revision		
Architecture	BASEMENT PLAN	02/11/97	4		
Structure					
Mechanical					
Survey	TRIAL JIM	10/26/97	-		
Hydraulic					

QUALITY CONTROL			
	INITIALS	SIGNATURE	DATE
DRAFTED			
DESIGNED			
VERIFIED			
APPROVED			

CLIENT

PACILAB INDUSTRIAL P/L

LEVEL 4
67 EPPING ROAD
NORTH RYDE
NSW 2113

PHONE: (02) 9490 2200
FAX: (02) 9490 2300

 **Pacilab**
INDUSTRIAL

CONSULTING ENGINEER

S&G CONSULTANTS PTY LIMITED

A.B.N. 21 789 222 558

Suite 4, Level 1, 41-45 PACIFIC HIGHWAY
WATARA NSW 2077

T: (02) 9487 5077 F: (02) 9487 5733

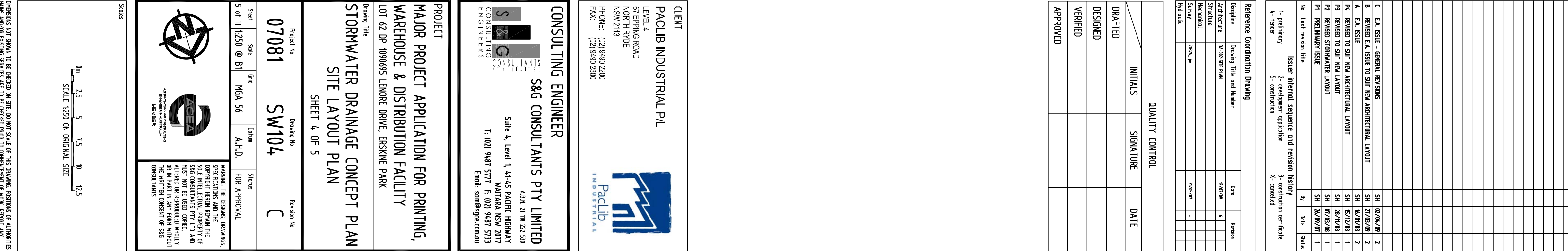
Email: sam@sgc.com.au

PROJECT
MAJOR PROJECT APPLICATION FOR PRINTING,
WAREHOUSE & DISTRIBUTION FACILITY
LOT 62 DP 1090695 LENORE DRIVE, ERSKINE PARK

STORMWATER DRAINAGE CONCEPT PLAN
SITE LAYOUT PLAN
SHEET 3 OF 5

[illegible]

DEPENDENCIES NOT SHOWN ON SITE, DO NOT SCALE OR THIS DRAWING, POSITIONS OF AUTHORITIES MAAS AND/OR EXISTING SERVICES ARE TO BE CHECKED PRIOR TO COMMENCEMENT OF WORK. REPORT ANY DISCREPANCIES TO THE CONSULTING ENGINEER FOR DESIGN/CLARIFICATION BEFORE PROCEEDING. WITH THE WORK THIS DRAWING IS TO BE READ IN CONJUNCTION WITH THE SPECIFICATIONS AND OTHER CONSULTANTS' DRAWINGS.



REFER TO SW105 FOR CONTINUATION

Reference Coordination Drawing			
Discipline	Drawing Title and Number	Date	Revision
Architecture	DA-80-201 A.M.	01/20/97	1
Structure			
Mechanical			
Electrical			
Plumbing			
Fire Protection			
Transportation			
Other			

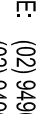
QUALITY CONTROL		
	INITIALS	SIGNATURE
DRAFTED		DATE
DESIGNED		
VERIFIED		
APPROVED		

CLIENT

PACILB INDUSTRIAL P/L

LEVEL 4
67 EPPING ROAD
NORTH RIDE
NSW 2113

PHONE: (02) 9440 2200
FAX: (02) 9450 2300

The logo for Pacilb Industrial features a stylized blue graphic of a building or industrial structure to the left of the company name. The name "Pacilb" is in a large, bold, sans-serif font, and "INDUSTRIAL" is in a smaller, all-caps, sans-serif font below it. The entire logo is set against a white background.

CONSULTING ENGINEER

S&G CONSULTANTS PTY LIMITED

A.B.N. 21 78 221 538



Suite 4, Level 1, 41-45 PACIFIC HIGHWAY
WATIDBA NSW 2077

T: (02) 9467 5777 F: (02) 9467 5733

Email: same@s-gc.com.au

PROJECT
MAJOR PROJECT APPLICATION FOR PRINTING,
WAREHOUSE & DISTRIBUTION FACILITY
LOT 62 DP 1090695 LENORE DRIVE, ERSKINE PARK

STORMWATER DRAINAGE CONCEPT PLAN
SITE LAYOUT PLAN
SHEET 4 OF 5

Project No.	07081	Drawing No.	SW104	Revision No.	C
Sheet	Size	Grid	Mea. Sd.	Delta	A.H.D.
5 of 11	11x20	@ 1"			
<div style="display: flex; justify-content: space-between;"> <div>   <p>AMERICAN COLLEGE OF EARTHQUAKE AND SEISMIC ENGINEERING MEMBER</p> </div> <div> <p>WORKING THE DESIGN, SHOWN, SPECIFICATIONS AND THE SOIL CONDITIONS PROVIDED AND THE SOIL INVESTIGATION REPORTS AND ALL ITEMS OR SUBSEQUENT WHAT IS IN PARTIAL OR FULL COMPLIANCE WITH THE PROVISIONS OF SBC CONSISTENTS</p> </div> </div>					
FOR APPROVAL					

DIMENSIONS NOT SHOWN TO BE CHECKED ON SITE. DO NOT SCALE OF THIS DRAWING. POSITIONS OF AUTHORITIES PLUMBS AND/OR EXISTING SERVICES ARE TO BE CHECKED PRIOR TO IMPLEMENTATION OF WORK. REPORT ANY DISCREPANCIES TO THE CONSULTING ENGINEER FOR DISCUSSION/CLARIFICATION BEFORE PROCEEDING WITH THE WORK. THIS DRAWING IS TO BE READ IN CONJUNCTION WITH THE SPECIFICATIONS AND OTHER CONSULTANTS' DRAWINGS.



Discipline	Drawing Title and Number	Date	Revision				
			1	2	3	4	5
Architecture	DA-001-001 R.A.H.	7/23/97	4				
Structure							
Mechanical							
Survey	7834 JP	3/26/87	-				
Hydraulic							

QUALITY CONTROL			
	INITIALS	SIGNATURE	DATE
DRAFTED			
DESIGNED			
VERIFIED			
APPROVED			

CLIENT

PACILB INDUSTRIAL P/L

LEVEL 4
57 SPRING ROAD
NORTH RYDE
NSW 2113

PHONE: (02) 9490 2200
FAX: (02) 9490 2300



The logo for Pacilb Industrial features a stylized blue graphic on the left, resembling a building or a stylized 'P' with a horizontal bar. To the right of the graphic, the word 'Pacilb' is written in a bold, sans-serif font, with 'INDUSTRIAL' in a smaller, all-caps, sans-serif font below it.

CONSULTING ENGINEER

S&G CONSULTANTS PTY LIMITED

CONSULTANTS
STRUCTURAL • CIVIL • GEOTECHNICAL • ENVIRONMENTAL

CONSULTING ENGINEERS



S&G

Suite 4, Level 1, 41-45 PACIFIC HIGHWAY
WATARA NSW 2077
T: (02) 9487 5777 F: (02) 9487 5733
Email: sand@sgc.com.au
A.B.N. 61 09 222 538

PROJECT
MAJOR PROJECT APPLICATION FOR PRINTING,
WAREHOUSE & DISTRIBUTION FACILITY
LOT 62 DP 1090695 LENORE DRIVE, ERSKINE PARK

Printed No.	07081	Expiry No.	SW105	Passport No.	C
Serial	Size	Grid	Mag. Size	Date	Status
6 of 11	1250	81	MSA 55	A.H.D.	TOP APPROVAL
<p>WARNING: THE EDITIONS, SHADOWS, SPECIFICATIONS AND THE SOLE INTELLECTUAL PROPERTY OF SAGE INDUSTRIES LTD AND SAGE INDUSTRIES LTD ARE NOT TO BE ALTERED OR REPRODUCED WHATEVER OR IN ANY MANNER WITHOUT THE WRITTEN CONSENT OF SAGE INDUSTRIES</p>					

Scales



0m 2.5 5 7.5 10 12.5

SCALE 1:250 ON ORIGINAL SIZE

DEPENDENCIES NOT SHOWN TO BE CHECKED ON SITE. DO NOT SCALE. THIS DRAWING, POSITIONS OF AUTHORITIES, MAAS AND/OR EXISTING SERVICES ARE TO BE CHECKED PRIOR TO COMMENCEMENT OF WORK. REPORT ANY DISCREPANCIES TO THE CONSULTING ENGINEER FOR DESIGN/CLARIFICATION BEFORE PROCEEDING WITH THE WORK. THIS DRAWING IS TO BE READ IN CONJUNCTION WITH THE SPECIFICATIONS AND OTHER CONSULTANTS' DRAWINGS.


Discipline	Drawing Title and Number	Date	Revision
Architecture	DA-400-001 P.1/1	0/23/07	6
Structure			
Mechanical			
Survey	7303.p	30/06/07	-
Hydraulic			

CLIENT

PACILB INDUSTRIAL P/L

LEVEL 4
67 EPPING ROAD
NORTH RYDE
NSW 2113

PHONE: (02) 9490 2200
FAX: (02) 9490 2200

 **Pacilb**
INDUSTRIAL

PROJECT
MAJOR PROJECT APPLICATION FOR PRINTING,
WAREHOUSE & DISTRIBUTION FACILITY
LOT 62 DP 1090695 LENORE DRIVE, ERSKINE PARK

MEASUREMENTS NOT SHOWN TO BE CHECKED ON SITE. DO NOT SCALE. THIS DRAWING, POSITIONS OF AUTHORITIES, MEASUREMENTS AND/OR EXISTING SERVICES ARE TO BE CHECKED PRIOR TO COMMENCEMENT OF WORK. REPORT ANY DISCREPANCIES TO THE CONSULTING ENGINEER FOR DESIGN/CLARIFICATION BEFORE PROCEEDING. WITH THE WORK, THIS DRAWING IS TO BE SEALD IN CONJUNCTION WITH THE SPECIFICATIONS AND OTHER CONSULTANT'S DRAWINGS.

