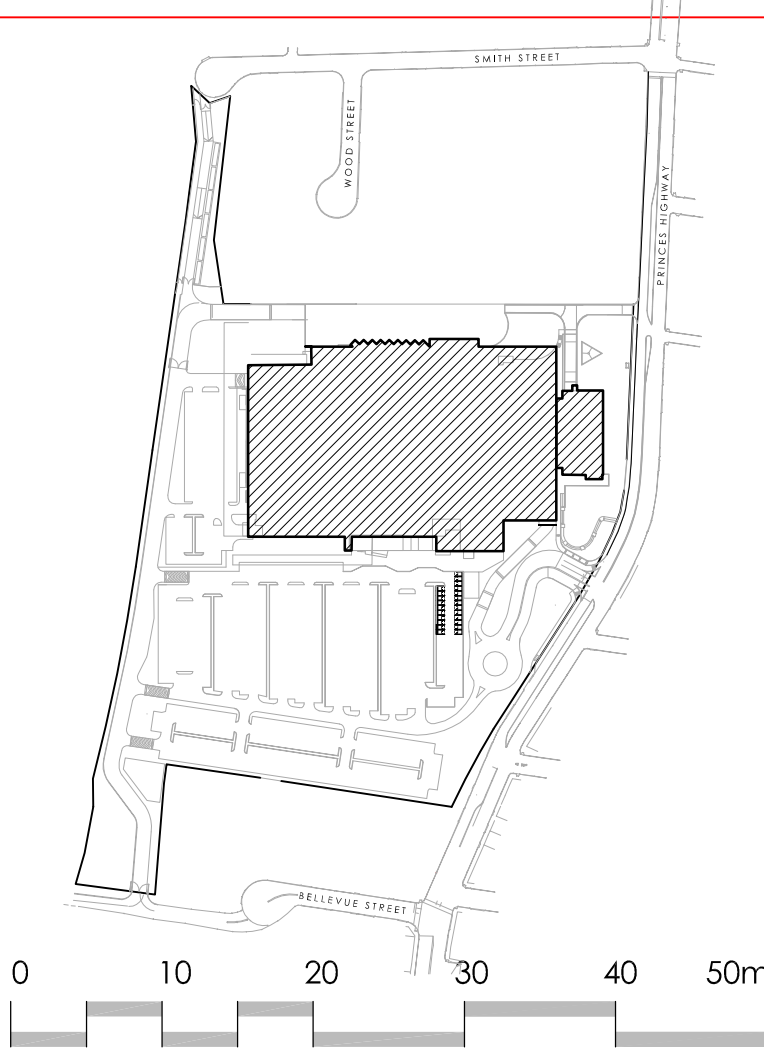


PRELIMINARY ISSUE
NOT FOR CONSTRUCTION

ISSUE	AMENDMENT	DATE	CHKD
1	REVISED DEVELOPMENT APPLICATION	04.03.10	SJM

NOTES OF MODIFICATIONS:

- 1 DELETION OF THE TWO BALCONIES FROM THE NORTH ELEVATION OF THE BUILDING
- 2 CHANGES TO THE CARPARK & ENTRANCE AREA FROM BELLEVUE STREET AS PER SACI ADVICE
- 3 LOCATING THE FIRE SPRINKLER TANKS EXTERNALLY
- 4 EXTENSION OF THE BUILDING FOR ESSENTIAL SERVICES AT GROUND & LOWER GROUND FLOOR LEVELS.
- 5 DELETION OF THE GLASS CANOPY BETWEEN THE HERITAGE BUILDING AND THE STORE
- 6 REVISED DESIGN OF THE CANOPY OVER THE FRONT ENTRY
- 7 CHANGE IN ROOF DESIGN
- 8 DELETION OF THE LIFT AT SOUTHERN END OF ATECO BUILDING
- 9 ADDITION OF THE OPEN MECHANICAL PLATFORMS AT ROOF LEVEL
- 10 ADDITION OF STAIR ACCESS UP TO ROOF LEVEL
- 11 RELOCATION OF THE FIG TREE
- 12 ADDITION OF THE LOWER GROUND FLOOR CARPARK EXHAUST TOWERS
- 13 ADDITION OF CARPARK EXHAUST PLENUM AT LOWER GROUND FLOOR LEVEL & RAIN WATER STORAGE TANKS UNDER THE LOADING DOCK SLAB
- 14 REVISED IKEA SIGNAGE LAYOUT/ DIMENSIONS
- 15 ADDITION OF IKEA WORDMARK AT ROOF LEVEL IN ROOF MEMBRANE MATERIAL
- 16 REVISED LANDSCAPING DESIGN
- 17 ADDITION OF MECHANICAL EQUIPMENT IN THE LOWER GROUND FLOOR OF ATECO BUILDING
- 18 ADDITION OF LOUVRES IN EXTERNAL WALL OF FIRST FLOOR MECHANICAL PLANTROOM



IKEA

LEFFLER SIMES ARCHITECTS

7 Young St, Neutral Bay
Sydney NSW 2089 AUSTRALIA
P +61 2 9509 3344
F +61 2 9509 3828
W www.lefflersimes.com.au

Level 2, 18 Oliver Lane
Melbourne VIC 3000 AUSTRALIA
P +61 3 9654 6344
F +61 3 9654 8244
E info@lefflersimes.com.au

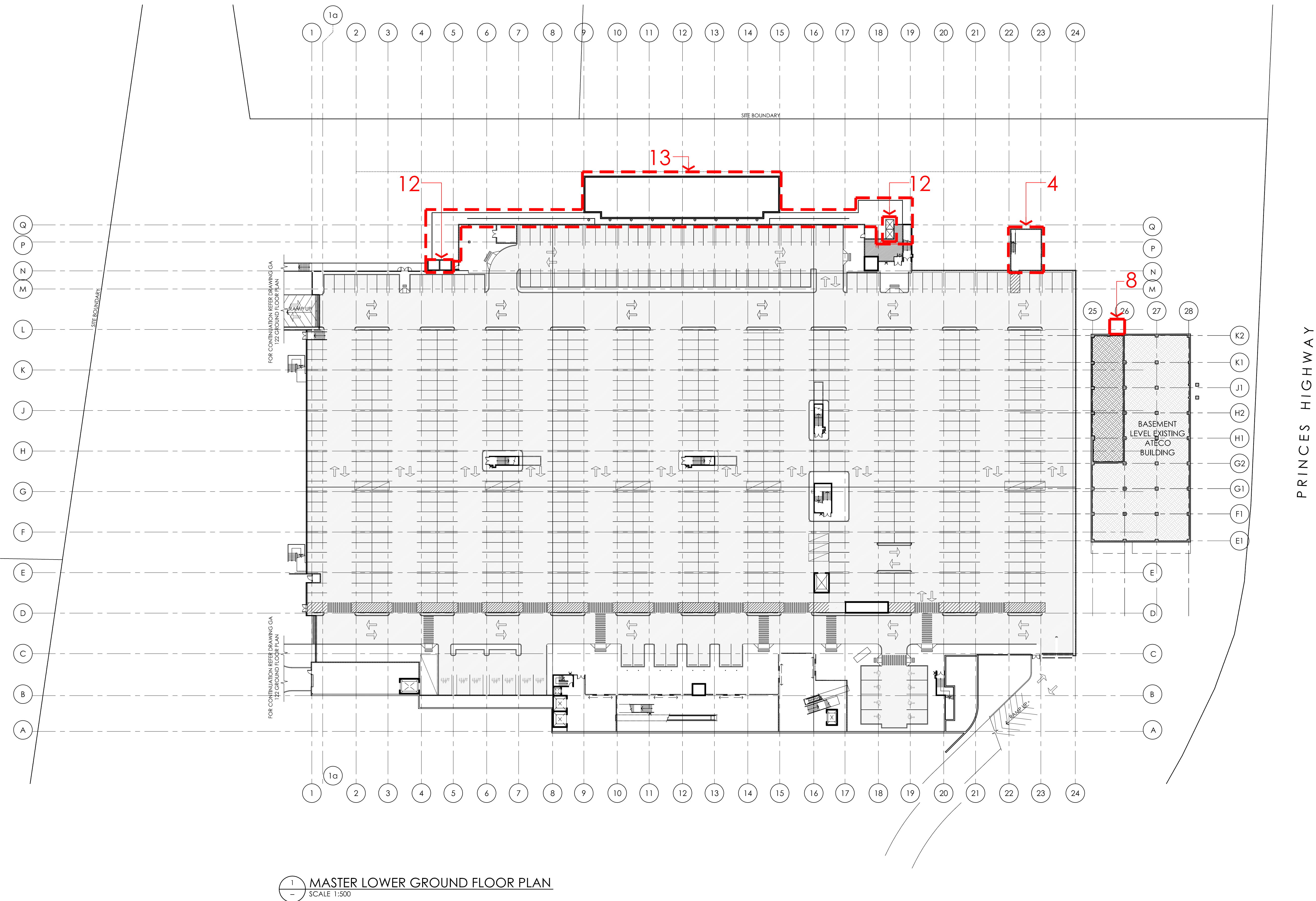
ACN 001 043 992 ABN 39 001 043 992

CLIENT
IKEA TEMPE

PROJECT
Proposed Bulky Goods
Development;
Princes Highway
Tempe, Sydney, NSW

DRAWING
Master Floor Plan
Lower Ground Floor

DATE February 2010	SCALE 1:500 @ A0	DRAWN CK/CW
PROJECT No. 2725	DRAWING No. DA 121	ISSUE 1



1 MASTER LOWER GROUND FLOOR PLAN
SCALE 1:500

PRELIMINARY