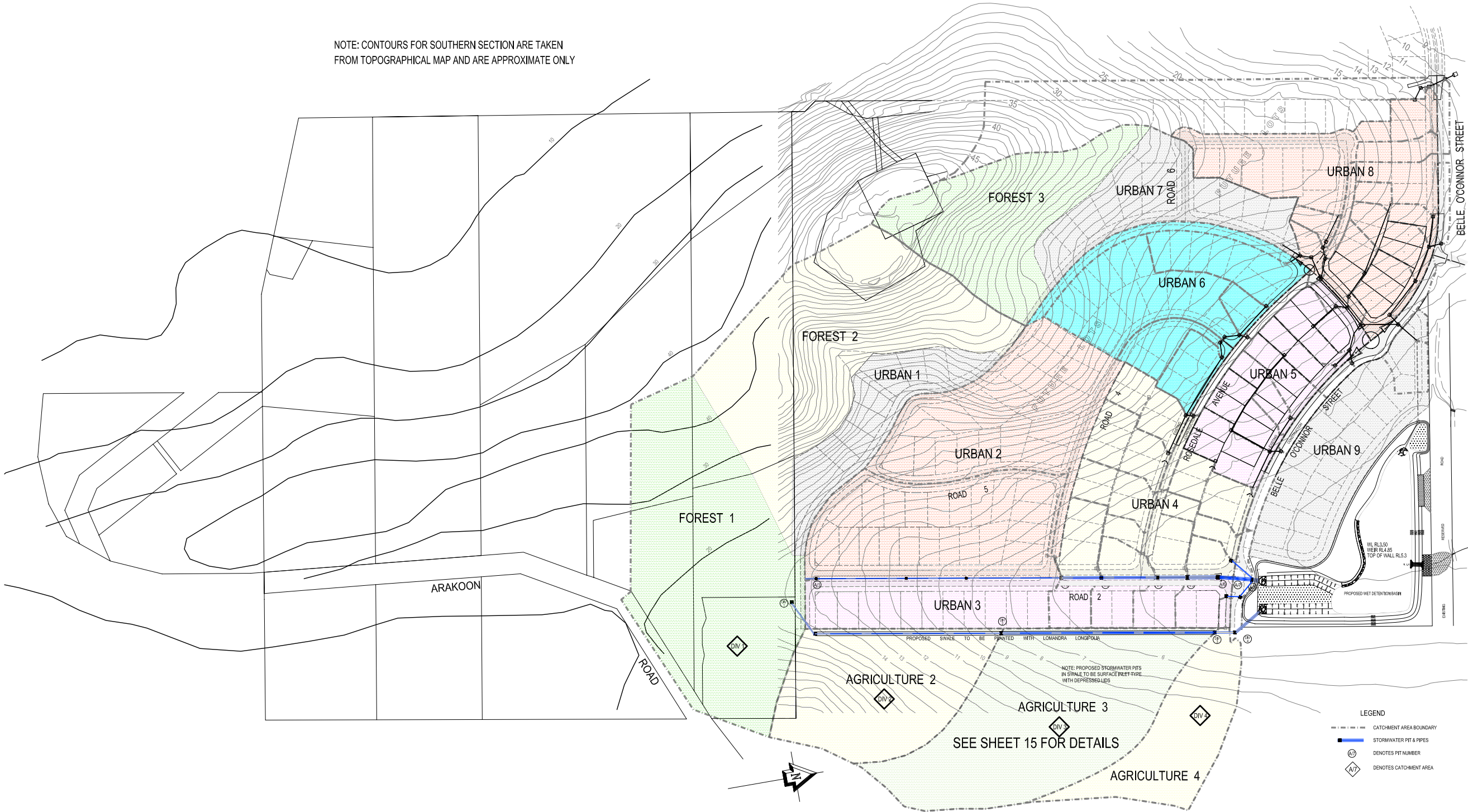


NOTE: CONTOURS FOR SOUTHERN SECTION ARE TAKEN FROM TOPOGRAPHICAL MAP AND ARE APPROXIMATE ONLY



SCALE 0 20 40 60 80 100 METRES  
1:2000 @ A1

**KING + CAMPBELL**  
with  
**craig teasdell**  
architect

1st Floor, Colonial Arcade  
25-27 Hay Street  
Port Macquarie NSW 2444  
  
PO Box 243  
Port Macquarie 2444  
  
T: 02 6586 2555  
F: 02 6583 4064  
  
E: info@kingcampbell.com.au

Rev A  
Date 13.07.06  
Description Issued for Approval

Scale AS SHOWN  
Datum AHD  
  
Caution: The stated scale of this drawing may have been altered by copying or other means. The scale should be verified prior to using the drawing to derive measurements.  
Copyright King & Campbell Pty Ltd

Project Number 14777  
Drawing Number 14777SMP1.DWG  
DA Number  
Drawn ES  
Checked PJR  
Date Created JUNE 2006

Drawing Title OVERALL STORMWATER MANAGEMENT PLAN  
Project LOT 124 DP 1097510 AND LOT 22 DP 1071657 SEASCAPE GROVE SOUTH WEST ROCKS  
Client WALDEL PARK PTY LTD  
Sheet 14 of 18  
Rev A