



**Coalpac Pty Ltd**

ABN: 91 003 558 914

# **Proposed Modification to Project Approval 07\_0127**

for the

## **Invincible Colliery Open Cut Mine**

Prepared by:



**R.W. CORKERY & CO. PTY. LIMITED**



R. W. CORKERY & CO. PTY. LIMITED





**Coalpac Pty Ltd**

ABN: 91 003 558 914

# **Proposed Modification to Project Approval 07\_0127**

**for the**

## **Invincible Colliery Open Cut Mine**

**Prepared for:**

Coalpac Pty Ltd  
Invincible Colliery  
Castlereagh Highway  
CULLEN BULLEN NSW 2790  
ABN: 91 003 558 914

Telephone: (02) 6359 0600  
Facsimile: (02) 6359 0608  
Email: mildon@cetresources.com

**Prepared by:**

R.W. Corkery & Co. Pty. Limited  
Geological & Environmental Consultants  
ABN: 31 002 033 712

Brooklyn Office:  
1st Floor, 12 Dangar Road  
PO Box 239  
BROOKLYN NSW 2083

Telephone: (02) 9985 8511  
Facsimile: (02) 9985 8208  
Email: admin@rwcorkery.com

February 2009

Orange Office:  
Suite 15, 256 Anson Street  
ORANGE NSW 2800

Telephone: (02) 6362 5411  
Facsimile: (02) 6361 3622  
Email: mail@rwcorkery.com

Ref No. 708/19



**R. W. CORKERY & CO. PTY. LIMITED**

This Copyright is included for the protection of this document

## **COPYRIGHT**

© R.W. Corkery & Co. Pty. Limited 2009  
and  
© Coalpac Pty Ltd 2009

**All intellectual property and copyright reserved.**

Apart from any fair dealing for the purpose of private study, research, criticism or review, as permitted under the Copyright Act, 1968, no part of this report may be reproduced, transmitted, stored in a retrieval system or adapted in any form or by any means (electronic, mechanical, photocopying, recording or otherwise) without written permission. Enquiries should be addressed to R.W. Corkery & Co. Pty. Limited.



**R. W. CORKERY & CO. PTY. LIMITED**

## 1 INTRODUCTION

Project Approval (PA) 07\_0127 for the Invincible Colliery open cut mine was issued to Coalpac Pty Ltd on 4 December 2008. PA 07\_0127 approves mining and processing of up to 1.2 million tonnes (t) of coal from an area of approximately 54ha, and the transport of up to 900 000t annually in accordance with 76 conditions of approval. PA 07\_0127 was subsequently modified on 12 January 2009 (PA 07\_0127 MOD 1) to correct an incorrect reference contained within the 'schedule of land' of PA 07\_0127.

Coalpac Pty Ltd ("Coalpac") is seeking a second modification to PA 07\_0127 to revise the "Project Site Boundary" identified in the Project Maps of *Appendix I*, ie. *Figure 1 – Project Site and Mine Layout* (p. 20), *Figure 2 – Coal Transport Routes* (p. 21), *Figure 5 – Proposed Final Landform and Mine Rehabilitation Plans* (p. 24). The proposed modification would be administrative in nature and has been proposed to rationalise the eastern boundary of the Invincible Colliery to aid in the definition, creation and management of mining tenure over the site.

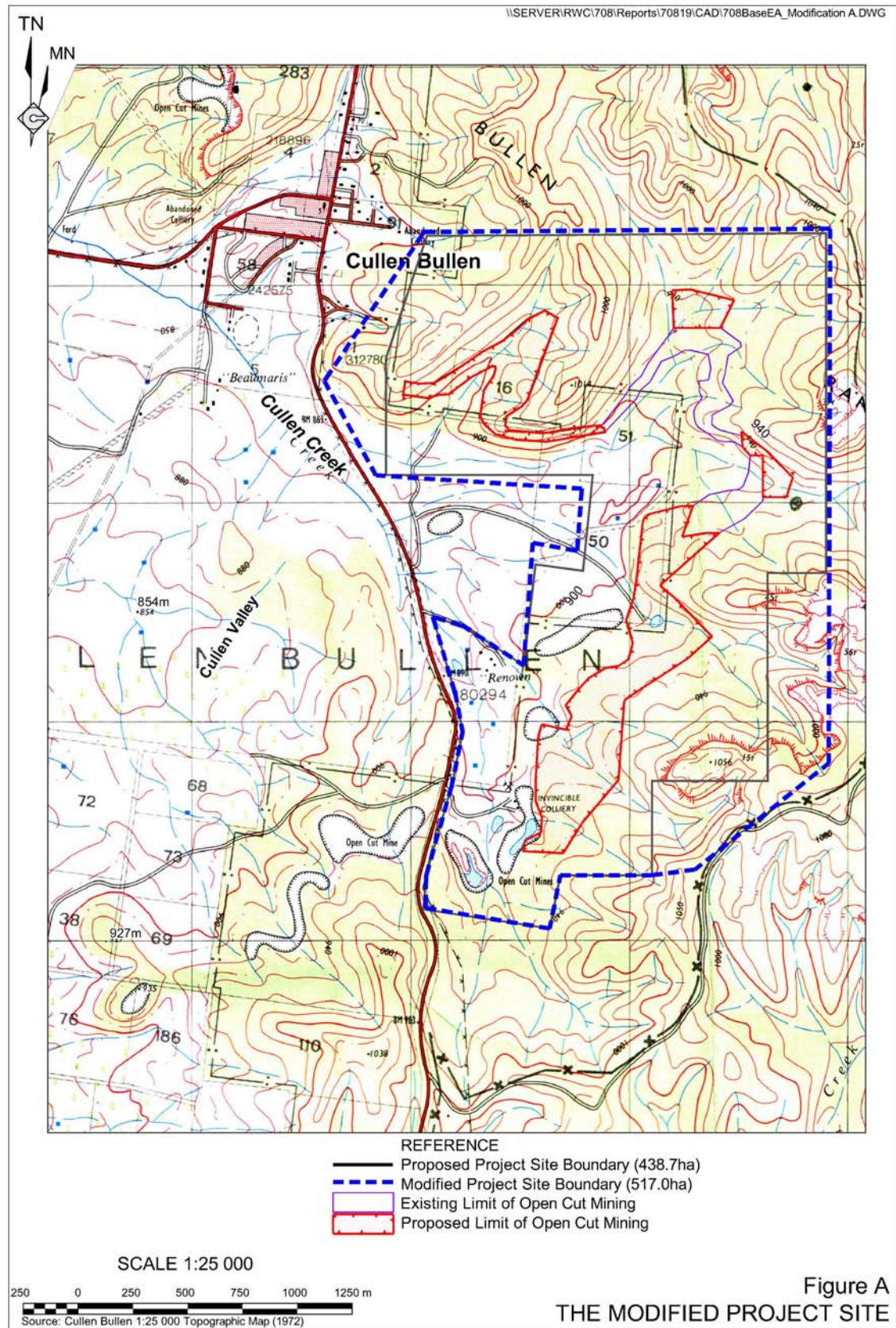
## 2 THE PROPOSED MODIFICATION

Coalpac proposes to rationalise the configuration of the eastern and northwestern boundaries of the Invincible Colliery as illustrated on **Figure A**.

The following provides a summary of the proposed modification to the configuration of the eastern boundary.

- The proposed modification to the configuration of the eastern boundary occurs only within the Ben Bullen State Forest, ie. there is no privately owned land involved.
- The proposed modification to the configuration of the eastern boundary would increase the area contained within the Project Site by 10.9ha.
- The proposed modification to the configuration of the northeastern boundary occurs within the Ben Bullen State Forest and freehold land for which purchase by Coalpac has been negotiated.
- The proposed modification to the configuration of the northeastern boundary would increase the area contained within the Project Site by 4.8ha.
- The modified Project Site boundary remains entirely within the Macquarie River catchment (with the triangular excision from the southeastern corner of the Project Site occurring (in part) within the Cox's River catchment, ie. the Sydney Drinking Water Catchment).
- The proposed modification would require no change to the operation of the Invincible Colliery, as described in the *Environmental Assessment* which accompanied the application for project approval and referenced in PA 07\_0127.





### 3 STATUTORY CONTEXT

#### 3.1 Approval Authority

PA 07\_0127 was approved by the Minister for Planning who is consequently the approval authority for the proposed modification. The Executive Director of the Department of Planning may, however, determine the application under delegation (7 June 2007) from the Minister for Planning.

#### 3.2 Requirements for Exhibition and/or Notification

It is considered that the proposed modification represents a very minor change to PA 07\_0127, resulting in no change to the environmental impact of the approved development, and as such no exhibition or notification is required prior to determination.

### 4 ASSESSMENT OF THE PROPOSED MODIFICATION

The following considers the potential for the proposed modification to alter the environmental impact of the approved development.

- Will the proposed modification require any change to the scale or type of activities undertaken on the Project Site?

*No. There would be no change to the type or scale of mining and related activities from those described in the Environmental Assessment which accompanied the application for project approval and referenced in PA 07\_0127.*

- Will the proposed modification increase the area of disturbance associated with the approved development?

*No. All mining and related activities would be restricted to those areas identified on Figures 1 to 5 of PA 07\_0127.*

- Will the proposed modification impact on any additional land owners or land uses?

*No. the modified configuration occurs within the Ben Bullen State Forest and freehold land to be purchased by Coalpac. The configuration of the modified eastern boundary of the Project Site remains within the Macquarie River catchment, ie. external to the Sydney Drinking Water Catchment.*

On the basis of the preceding, the proposed modification would have no influence on the environmental impact of the approved development. The modification would be administrative only and could be affected through revision to *Figures 1, 2 and 5* of PA 07\_0127. Modified versions of *Figures 1, 2 and 5* have been attached to this document and provided as individual electronic files for incorporation into the modified project approval.



## **5 CONCLUSION**

The rationalised configuration of the eastern boundary of the Project Site would simplify the configuration of future mining tenure over the Invincible Colliery site and it is concluded that the proposed modification would be purely administrative, resulting in no additional environmental impact and affecting no additional stakeholders.





# Attachments

1. **Figure 1:** Project Site and Mine Layout
2. **Figure 2:** Coal Transport Routes
3. **Figure 5:** Proposed Final Landform and Mine Rehabilitation Plans



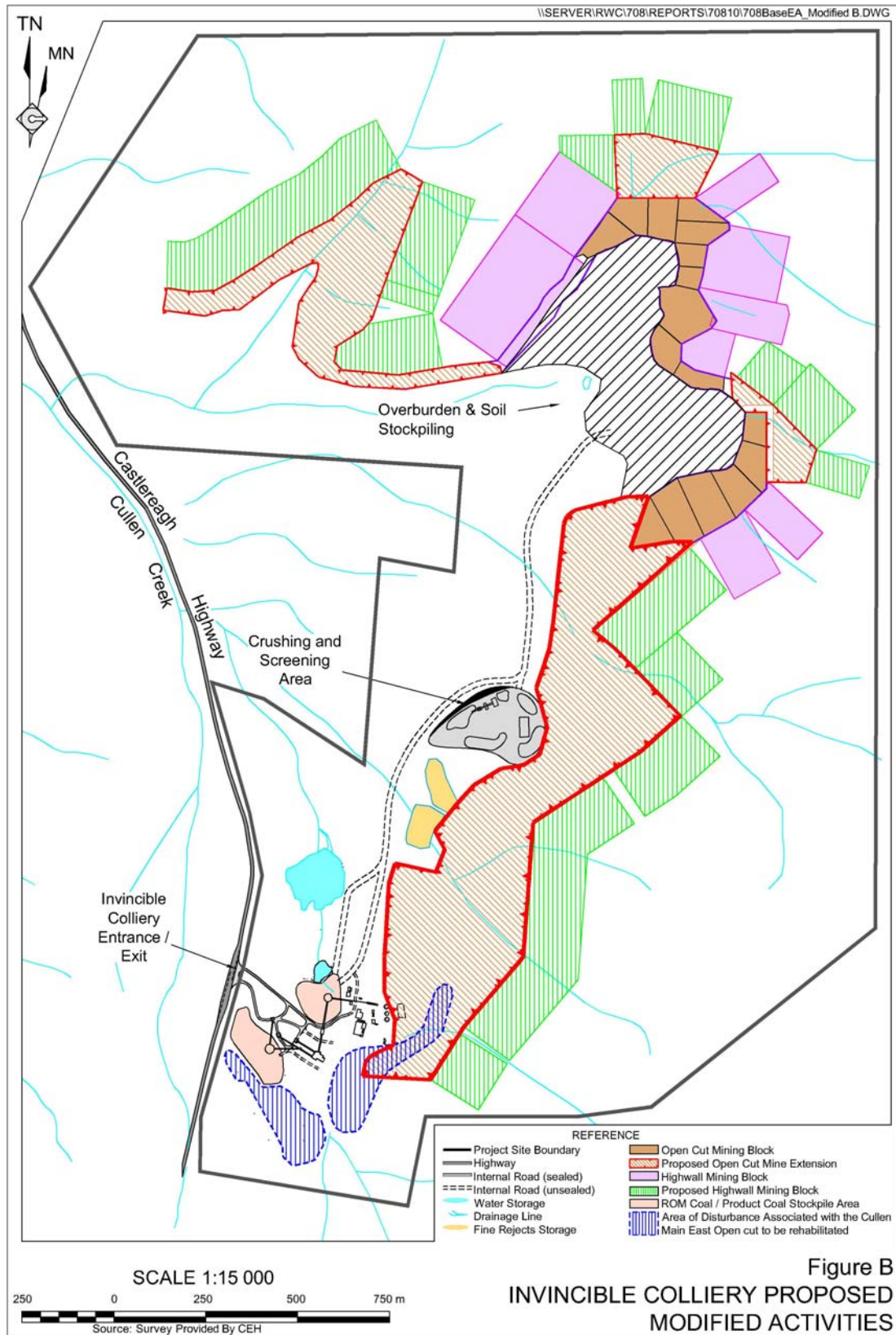


Figure 1: Project Site and Mine Layout





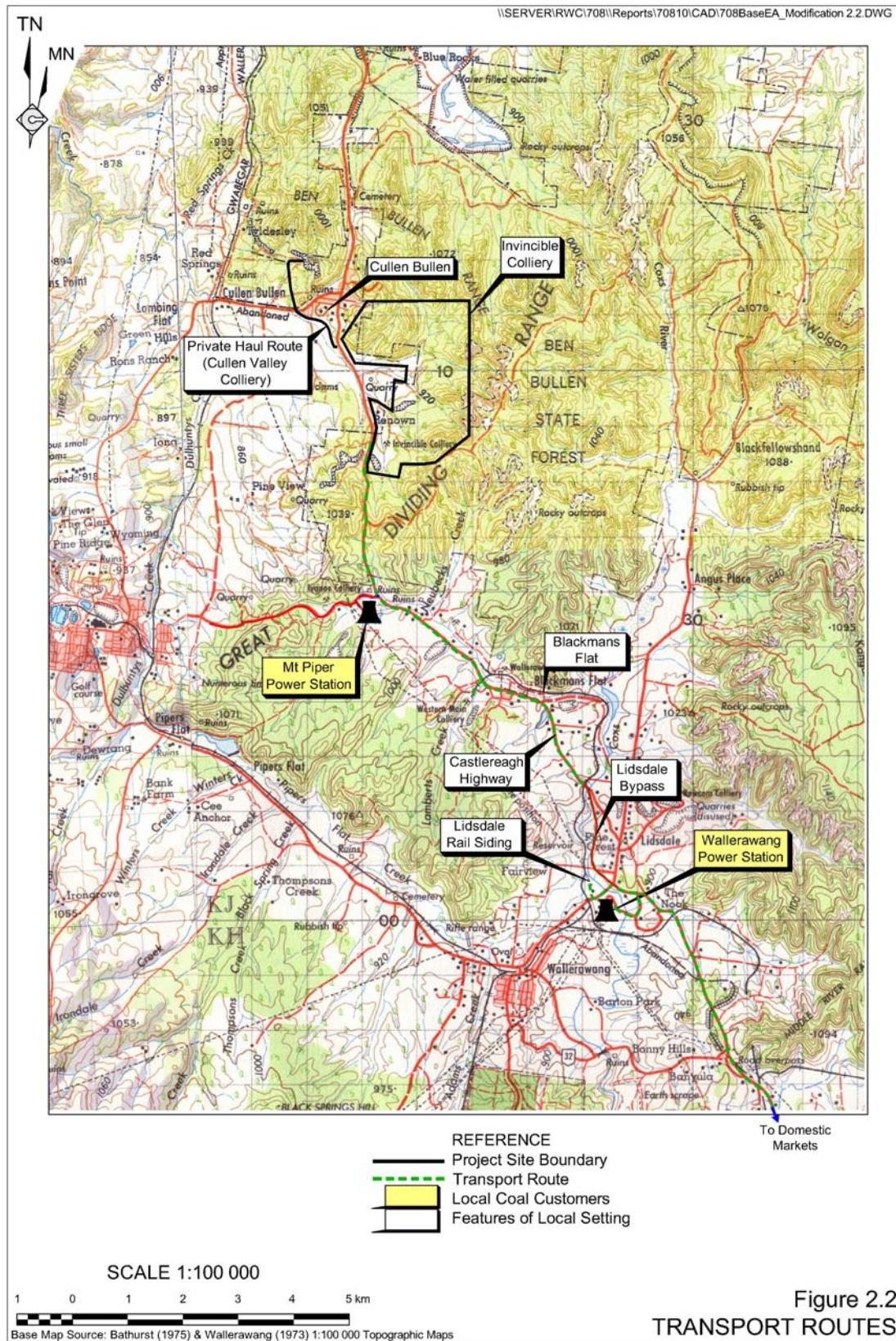


Figure 2: Coal Transport Routes





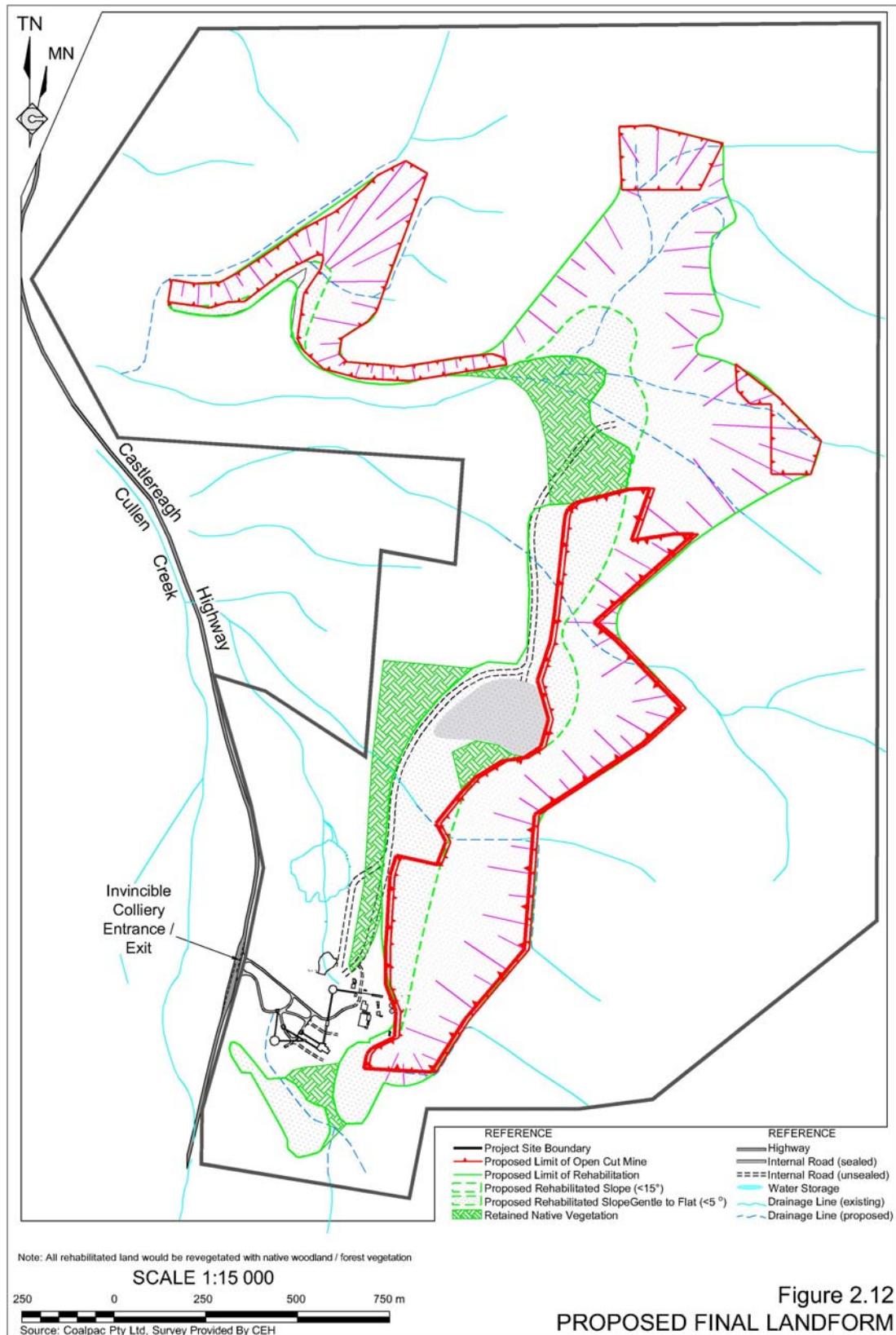


Figure 2.12  
PROPOSED FINAL LANDFORM

**Figure 5: Proposed Final Landform and Mine Rehabilitation Plans**

