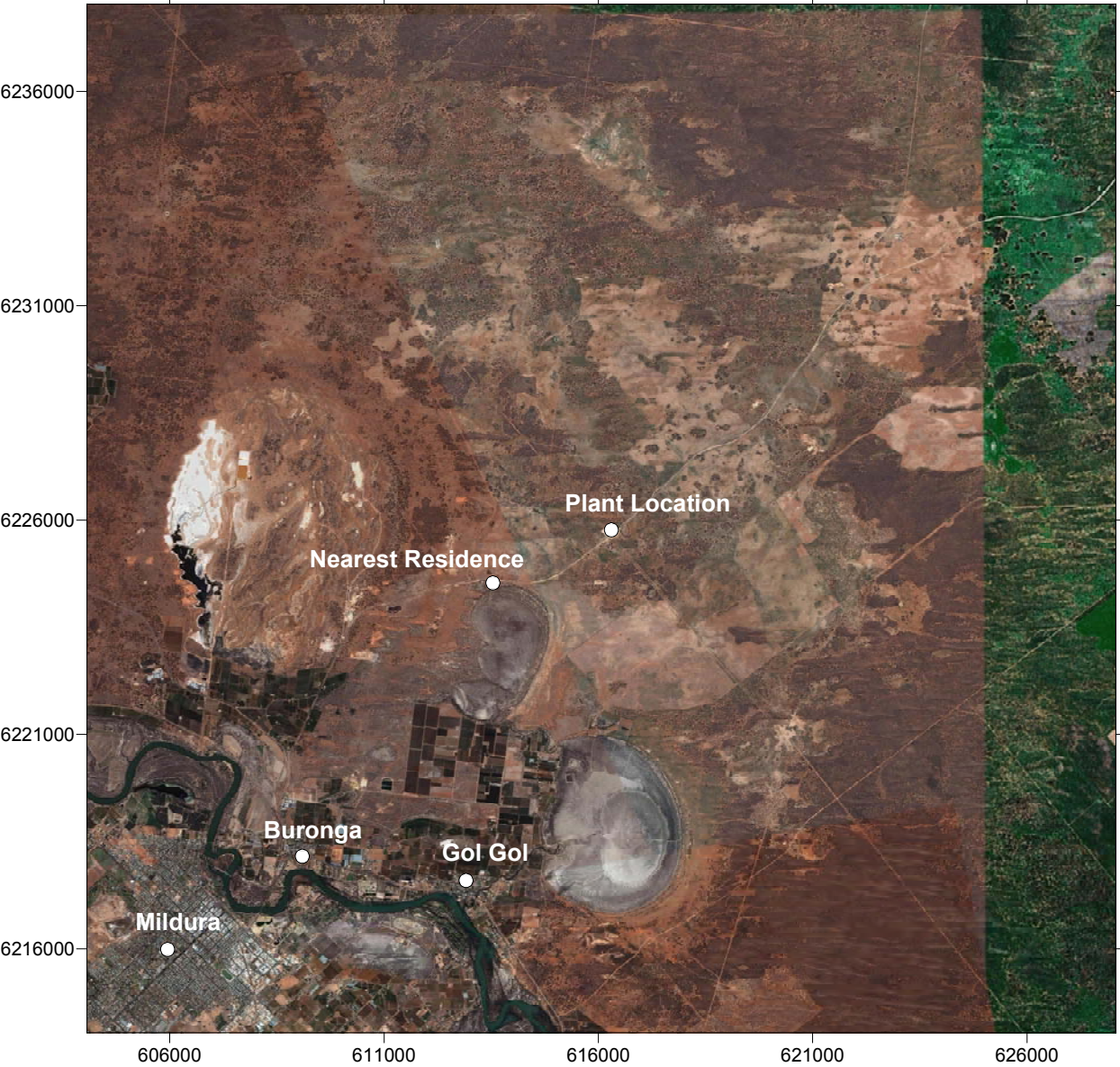



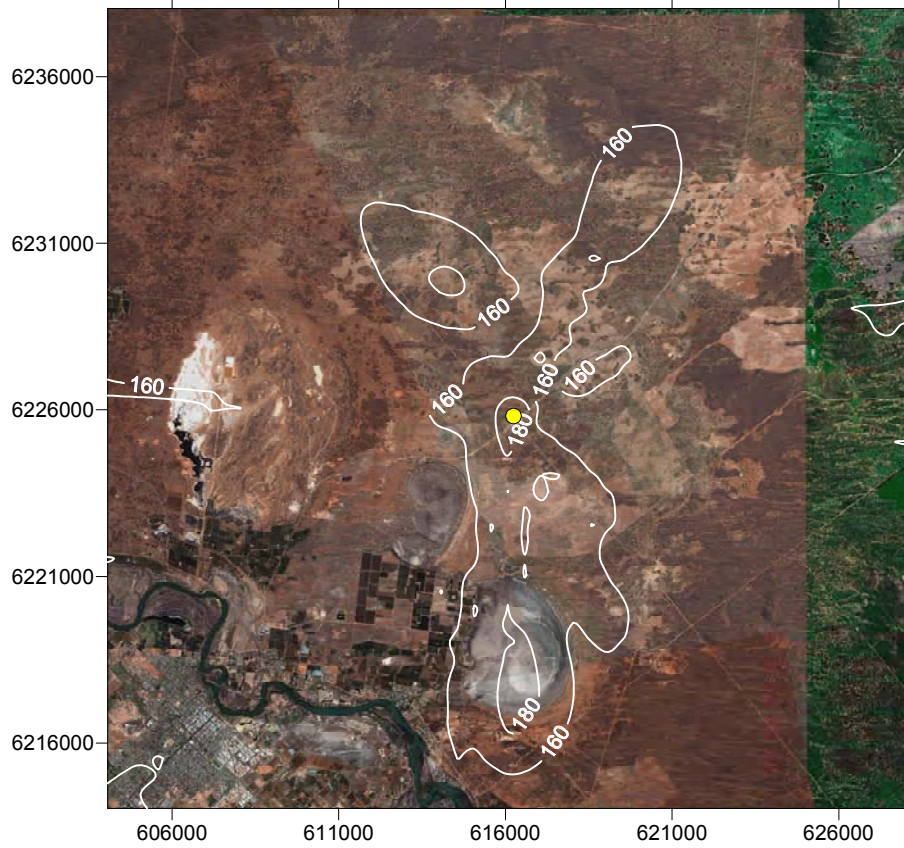
Figures

(Image sourced from GoogleEarth)



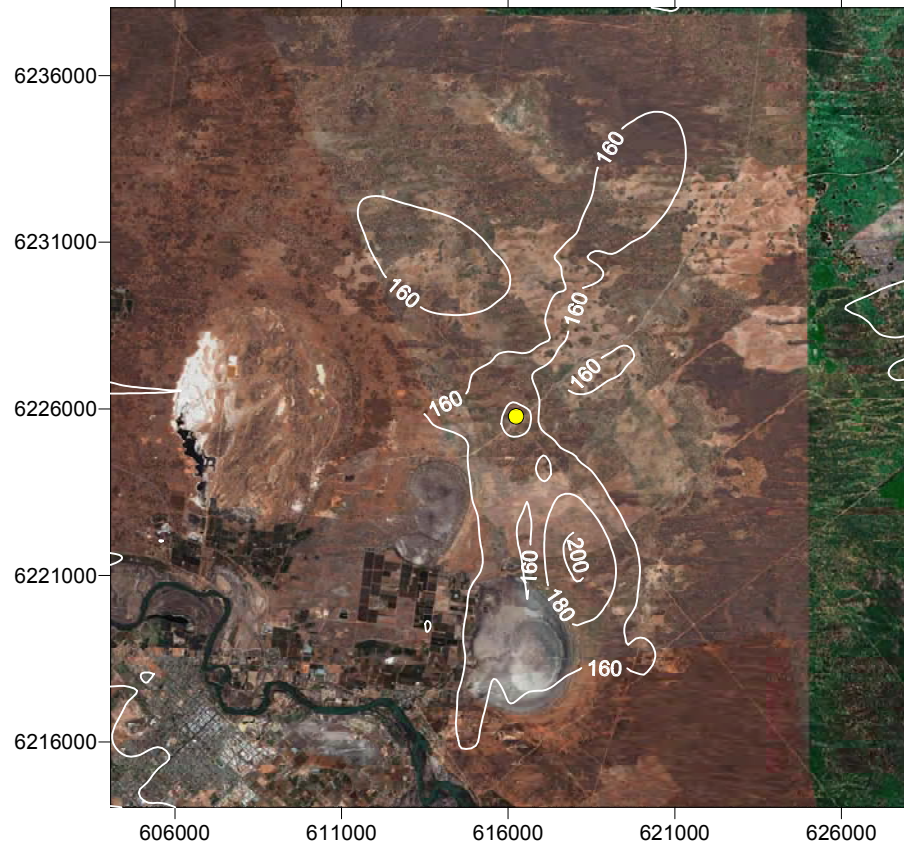
Client: INTERNATIONAL POWER (AUSTRALIA) PTY LTD		Project: ENVIRONMENTAL ASSESSMENT BURONGA PEAKING POWER STATION			Title: Modelling Domain 24 x 24km (MGA94 Coordinates)	
						
		Drawn: SWB	Approved: DRAFT	Date: November 2007	Figure: 1	Rev: A
		Job No: 43177457	File: 43177457 Figure 1.srf			A4

13m Stack Height




(Images sourced from GoogleEarth)

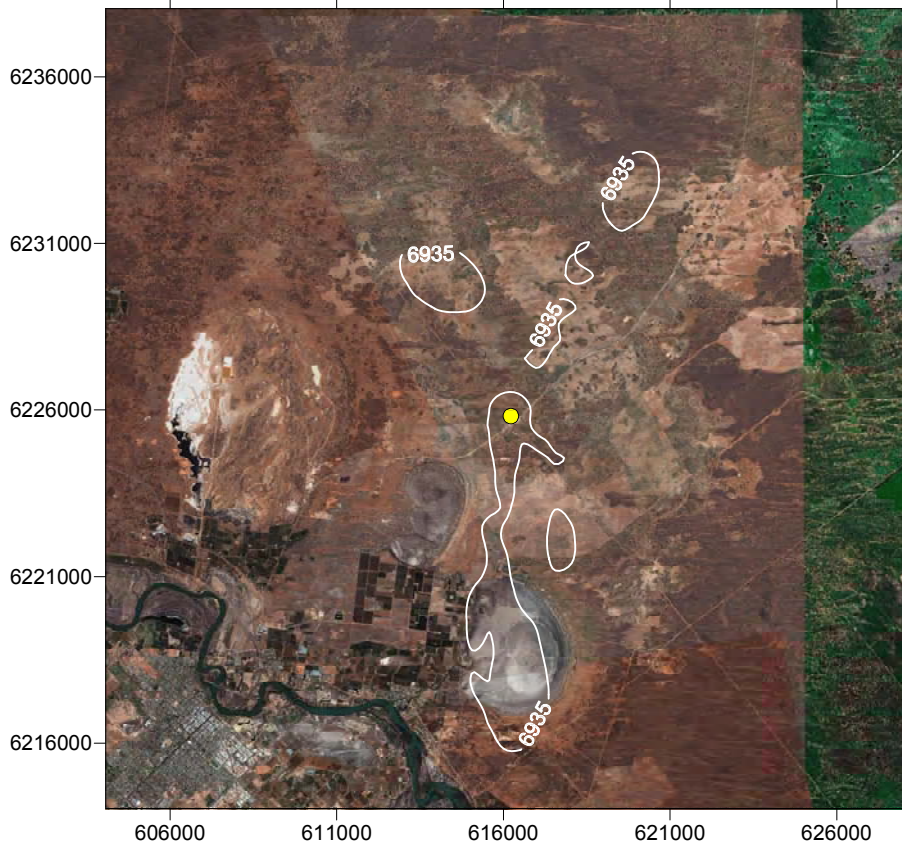
20m Stack Height



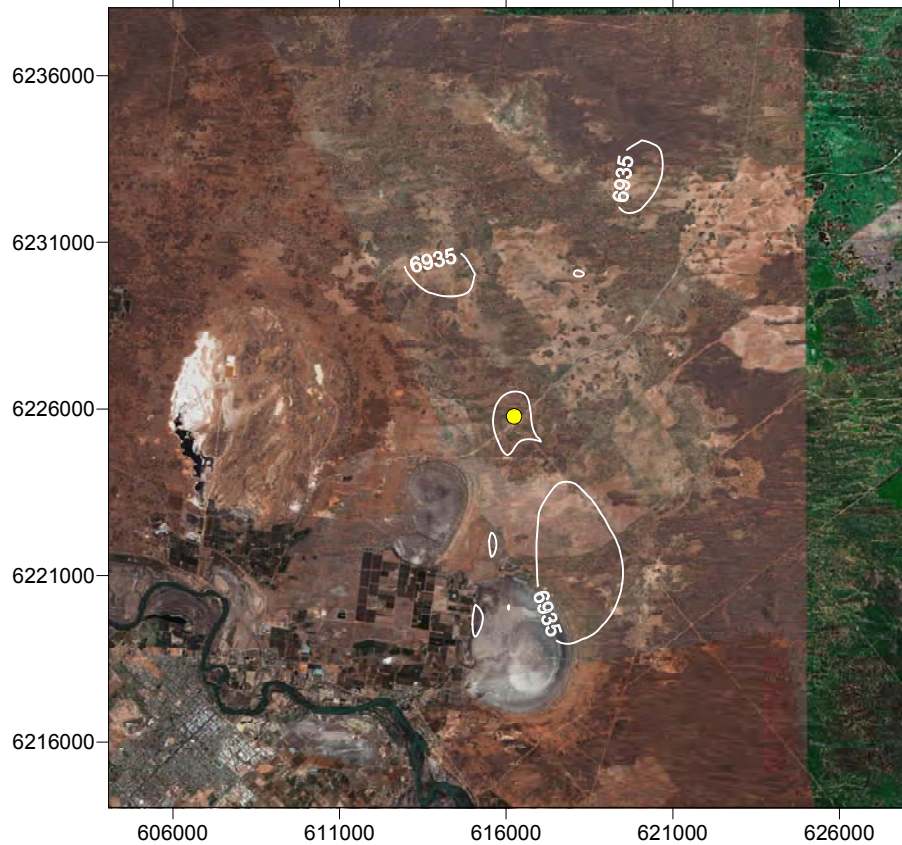
Contours in $\mu\text{g}/\text{m}^3$
 Background Concentration: $131.2\mu\text{g}/\text{m}^3$
 DECC Assessment Criteria: $246\mu\text{g}/\text{m}^3$
 ● Plant Location

Client: INTERNATIONAL POWER (AUSTRALIA) PTY LTD	Project: ENVIRONMENTAL ASSESSMENT BURONGA PEAKING POWER STATION			Title: NO₂ 1 Hour Averaging (All NO_x as NO₂) Maximum Cumulative Concentration	
	Drawn: SWB Job No: 43177457	Approved: DRAFT File: 43177457 Figure 1.srf	Date: November 2007	Figure: 2	Rev: A A4


13m Stack Height



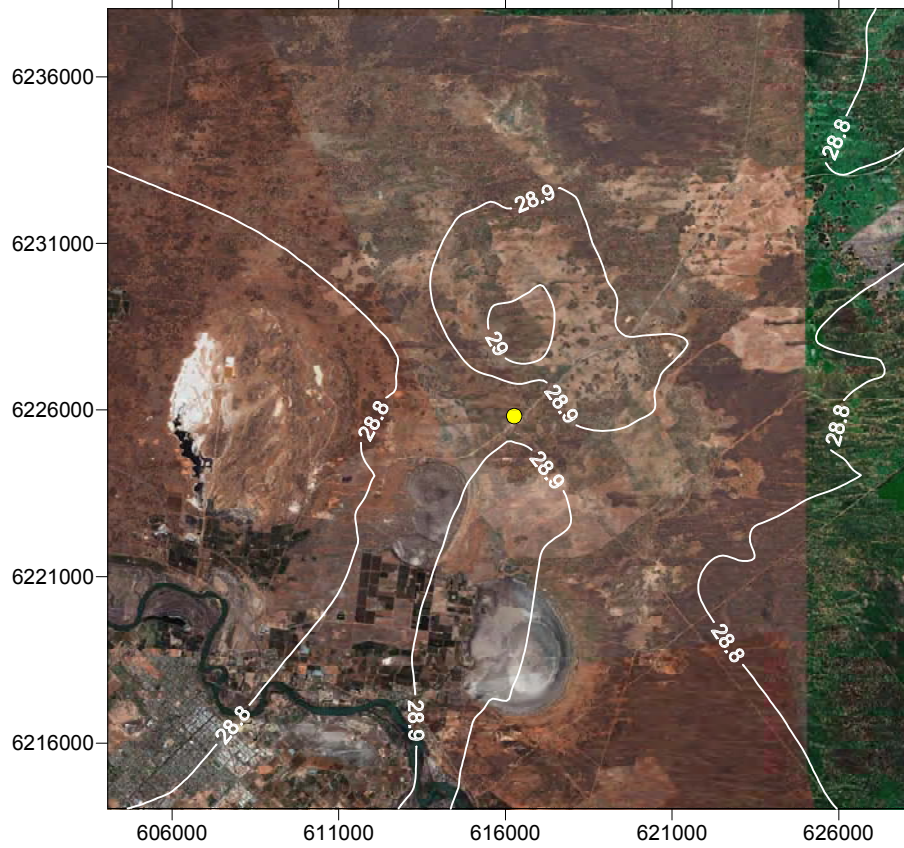
20m Stack Height



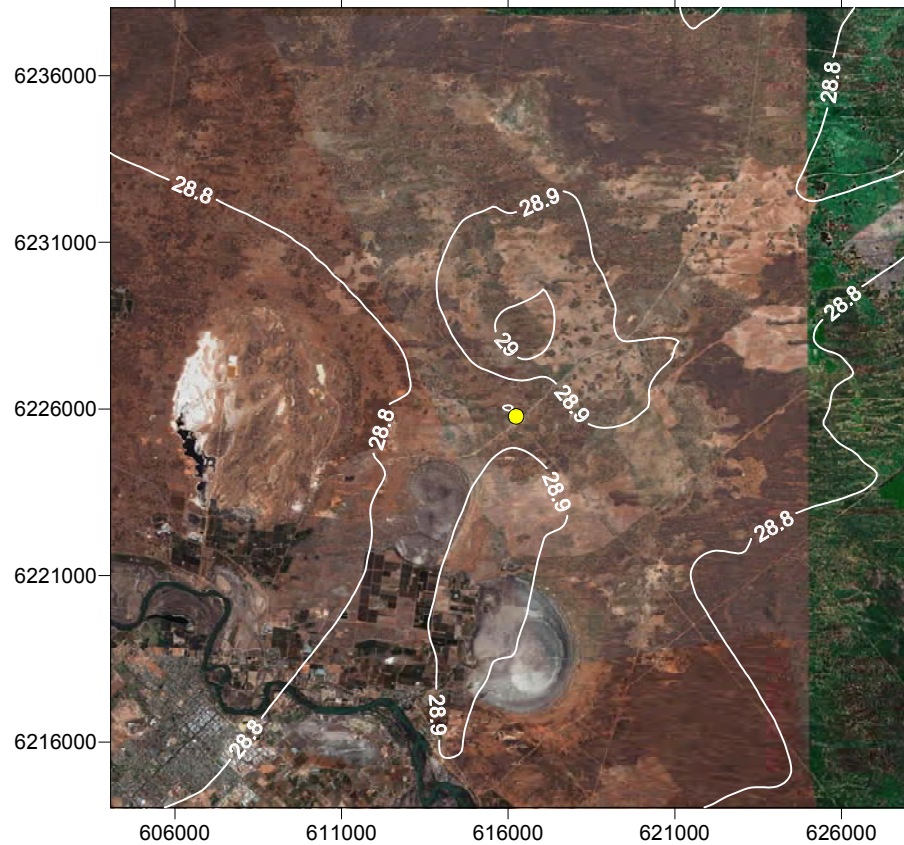
Contours in $\mu\text{g}/\text{m}^3$
 Background Concentration: $6,930\mu\text{g}/\text{m}^3$
 DECC Assessment Criteria: $100,000\mu\text{g}/\text{m}^3$
 ● Plant Location

Client: INTERNATIONAL POWER (AUSTRALIA) PTY LTD	Project: ENVIRONMENTAL ASSESSMENT BURONGA PEAKING POWER STATION		Title: CO 15 Minute Averaging Maximum Cumulative Concentration	
	Drawn: SWB Job No: 43177457	Approved: DRAFT File: 43177457 Figure 1.srf	Figure: 4	
			Rev: A A4	


13m Stack Height



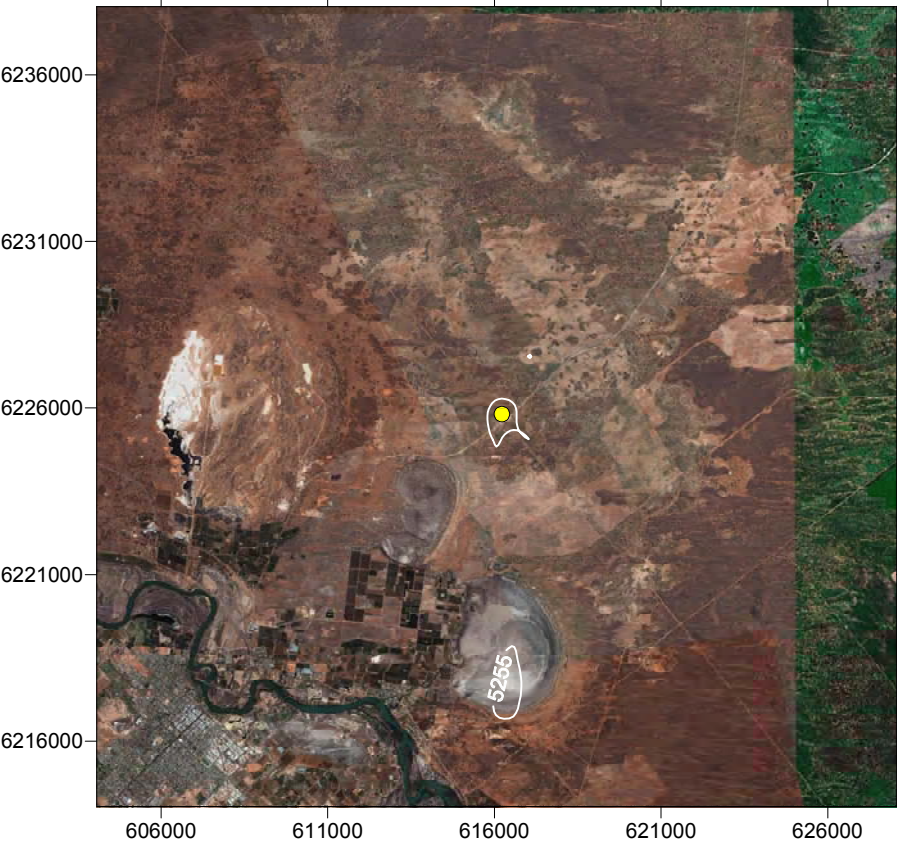
20m Stack Height



Contours in $\mu\text{g}/\text{m}^3$
 Background Concentration: $28.7\mu\text{g}/\text{m}^3$
 DECC Assessment Criteria: $60\mu\text{g}/\text{m}^3$
 ● Plant Location

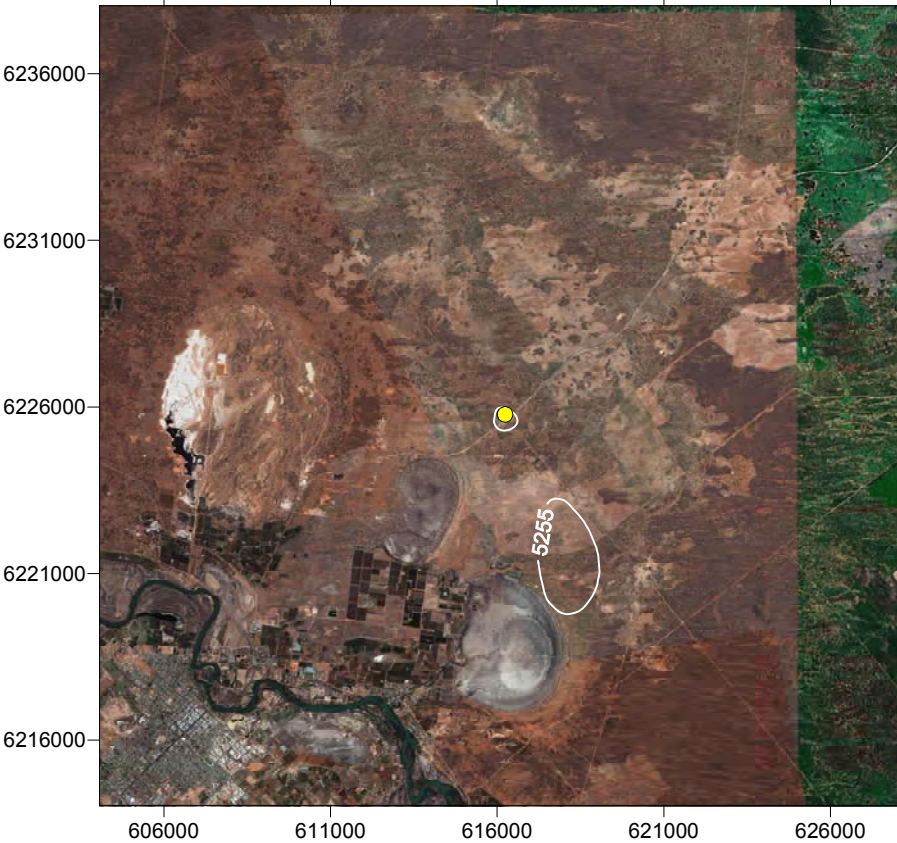
Client: INTERNATIONAL POWER (AUSTRALIA) PTY LTD		Project: ENVIRONMENTAL ASSESSMENT BURONGA PEAKING POWER STATION		Title: NO₂ Annual Averaging (All NO_x as NO₂) Cumulative Concentration	
	Drawn: SWB		Approved: DRAFT	Date: November 2007	Figure: 3
	Job No: 43177457		File: 43177457 Figure 1.srf		
				Rev: A	
				A4	

13m Stack Height




(Images sourced from GoogleEarth)

20m Stack Height



Contours in $\mu\text{g}/\text{m}^3$
Background Concentration: $5,250\mu\text{g}/\text{m}^3$
DECC Assessment Criteria: $30,000\mu\text{g}/\text{m}^3$
● Plant Location

Client:	INTERNATIONAL POWER (AUSTRALIA) PTY LTD		Project:	ENVIRONMENTAL ASSESSMENT BURONGA PEAKING POWER STATION			Title:	CO 1 Hour Averaging Maximum Cumulative Concentration	
				Drawn: SWB	Approved: DRAFT	Date: November 2007		Figure: 5	Rev: A
Job No: 43177457				File: 43177457 Figure 1.srf		A4			