

Notice of Modification

Section 75W of the *Environmental Planning and Assessment Act 1979*

As delegate of the Minister for Planning, I modify the project approval referred to in Schedule 1, as set out in Schedule 2.

David Kitto
Director
Mining & Industry Projects

Sydney

24 MAY

2010

SCHEDULE 1

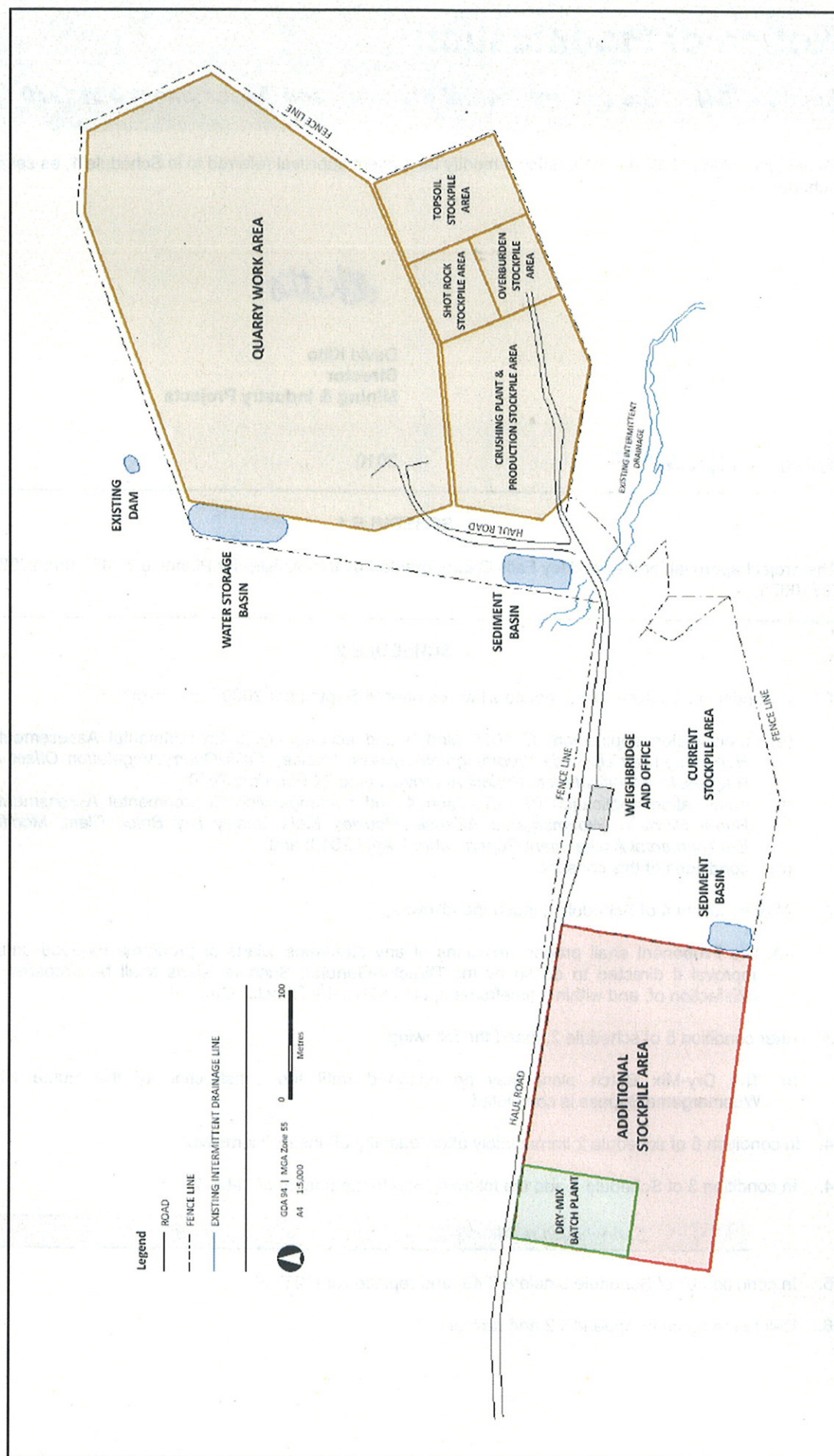
The project approval for the Rockley Falls Quarry granted by the Minister for Planning on 16 June 2008 (07_0078).

SCHEDULE 2

1. In condition 2 of Schedule 2, delete all words after "4 September 2009;" and insert:
 - (e) modification application 07_0078 Mod 3 and accompanying Environmental Assessment titled *Hume Highway Upgrade Woomargama Bypass, Rockley Falls Quarry Vegetation Offset Areas, Request for Modification to Project Approval* dated 24 February 2010;
 - (f) modification application 07_0078 Mod 4 and accompanying Environmental Assessment titled *Hume Highway Woomargama Alliance, Rockley Falls Quarry Dry Batch Plant, Modification Environmental Assessment Report* dated 7 April 2010; and
 - (g) conditions of this consent.
2. After condition 4 of Schedule 2 insert the following:
 - 4A. The Proponent shall prepare revisions of any strategies, plans or programs required under this approval if directed to do so by the Director-General. Such revisions shall be prepared to the satisfaction of, and within a timeframe approved by, the Director-General.
3. After condition 5 of schedule 2, insert the following:
 - 5A. The Dry-Mix Batch plant may be operated until the construction of the Hume Highway Woomargama Bypass is completed.
4. In condition 6 of schedule 2 immediately after "quantity of" insert "extractive".
4. In condition 3 of Schedule 3 add the following row to the bottom of Table 2:

Springhaven residence	35
-----------------------	----

5. In condition 27 of Schedule 3 delete "243" and replace with "258.8".
6. Delete the figure in Appendix 2 and replace with:



7. In dot point 8 of section 4 of Appendix 3 delete “; and” and replace with:

in accordance with the fencing strategy developed in consultation with the DECCW. The Rehabilitation and Vegetation Offset Area Management Plan will include details of this fencing strategy including a map;

8. In the last dot point of section 4 of Appendix 3, delete “.” and insert:

; and

- The farm dam located to the south west of the quarry extraction area within Vegetation Offset Area 3 and the associated in-stream structures within the banks of the creek line which divert water to this dam would be removed and rehabilitated following the completion of quarry activities.

9. Delete the figure in Appendix 4 and replace with:



Legend

- Offset Area 1
- Offset Area 2
- Offset Area 3
- Offset Area 4
- Farm Dams and Access Tracks

Data Sources:
Department of Lands (2006)
BluePrint Planning and Development (2007)
LPI (2009)



0 254
Metres

