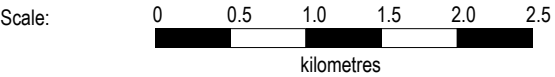
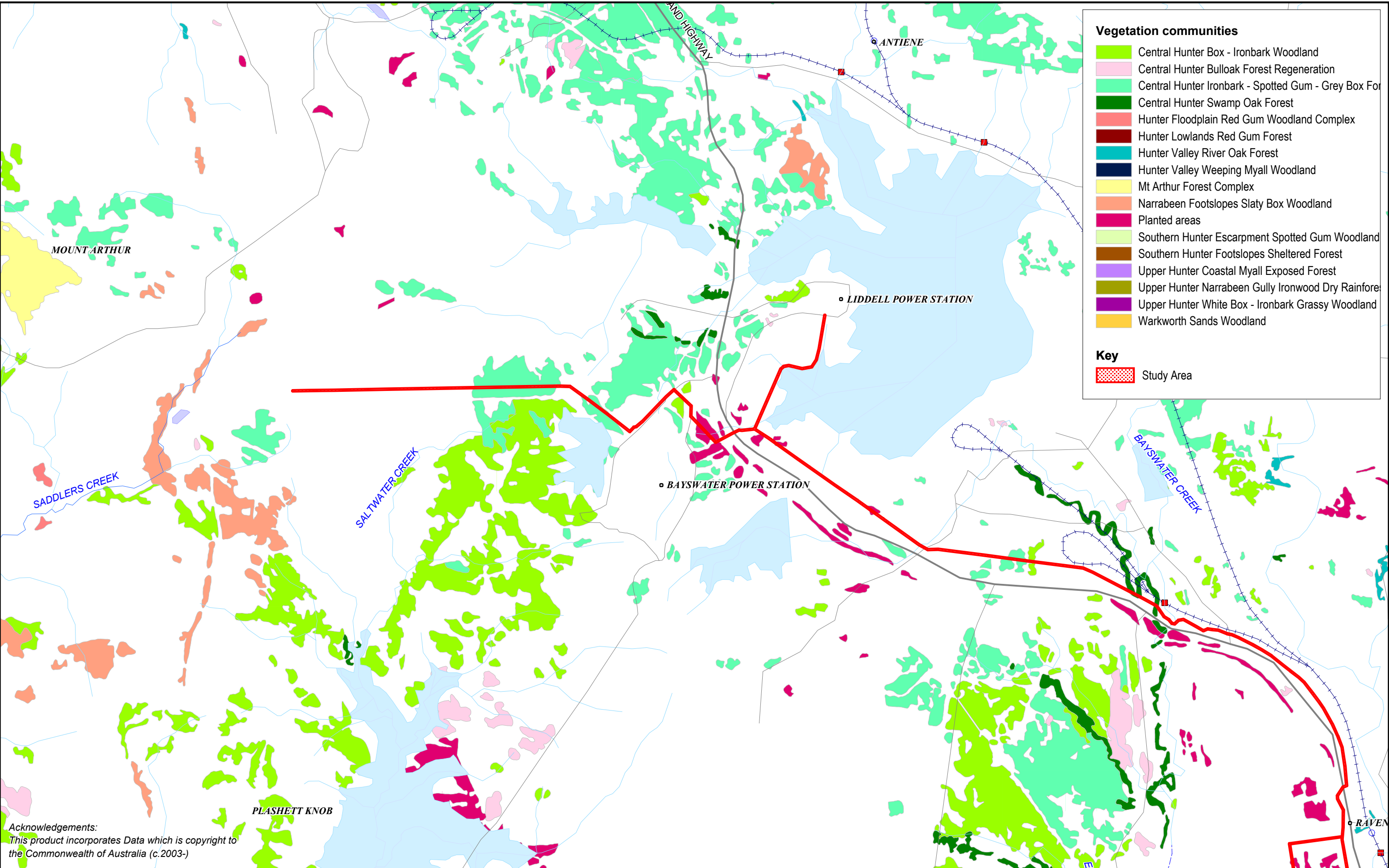


BIOSIS RESEARCH Pty. Ltd.
15 - 17 Henrietta Street
Chippendale
NEW SOUTH WALES 2008

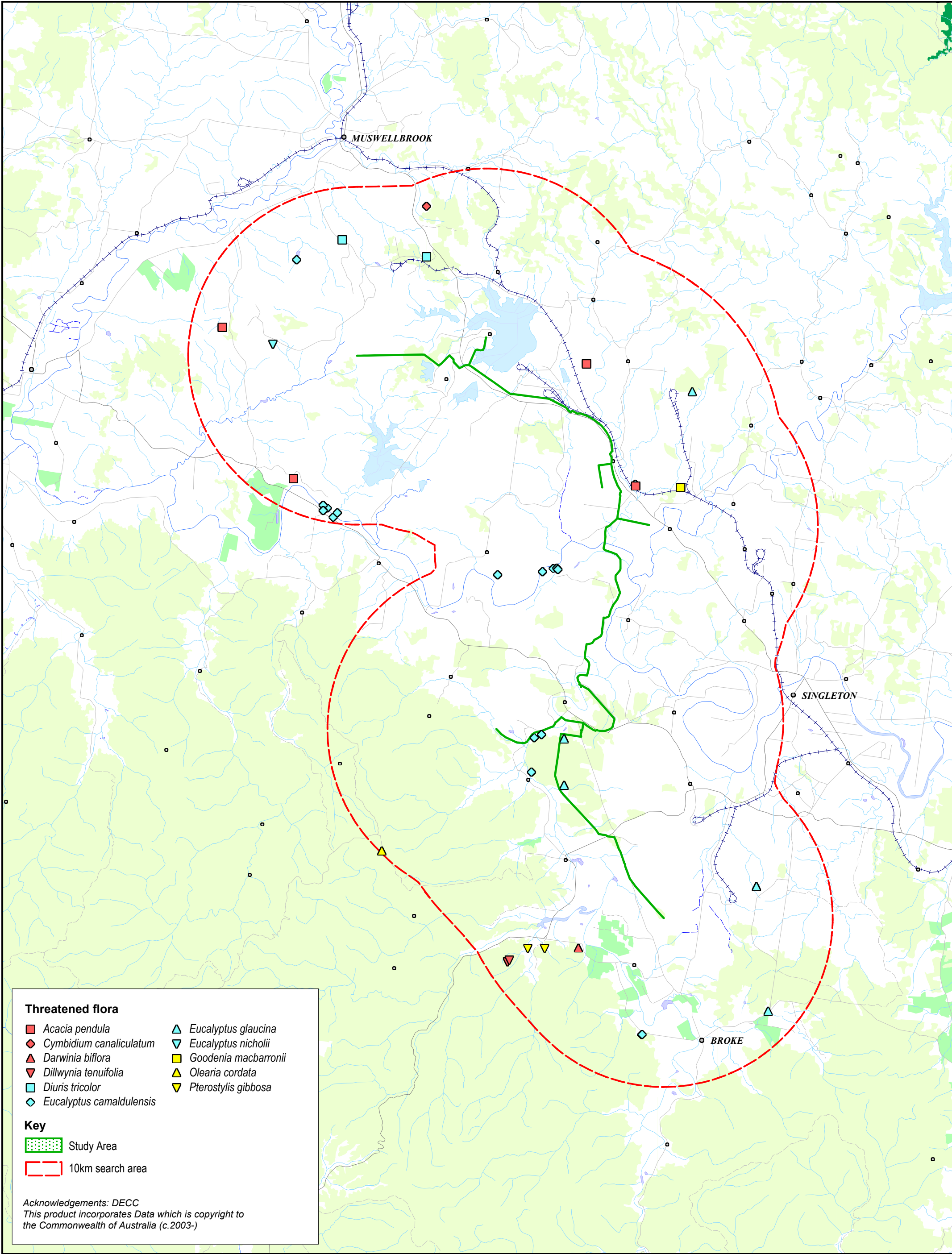
Figure 4b: Vegetation within the study area, as mapped by Peake (2005)

DATE: 9 August 2007	
Checked by: TE	File number: S4757
Location:~...4000\4700s\4757\Mapping\S4757 F4_veg.WOR	





Acknowledgements:
This product incorporates Data which is copyright to
the Commonwealth of Australia (c.2003-)



Threatened flora

- | | |
|-----------------------------------|-------------------------------|
| ■ <i>Acacia pendula</i> | ▲ <i>Eucalyptus glaucina</i> |
| ◆ <i>Cymbidium canaliculatum</i> | ▼ <i>Eucalyptus nicholii</i> |
| ▲ <i>Darwinia biflora</i> | ■ <i>Goodenia macbarronii</i> |
| ▼ <i>Dillwynia tenuifolia</i> | ▲ <i>Olearia cordata</i> |
| ■ <i>Diuris tricolor</i> | ▼ <i>Pterostylis gibbosa</i> |
| ◆ <i>Eucalyptus camaldulensis</i> | |

Key

- Study Area
- 10km search area

Acknowledgements: DECC
This product incorporates Data which is copyright to
the Commonwealth of Australia (c.2003-)

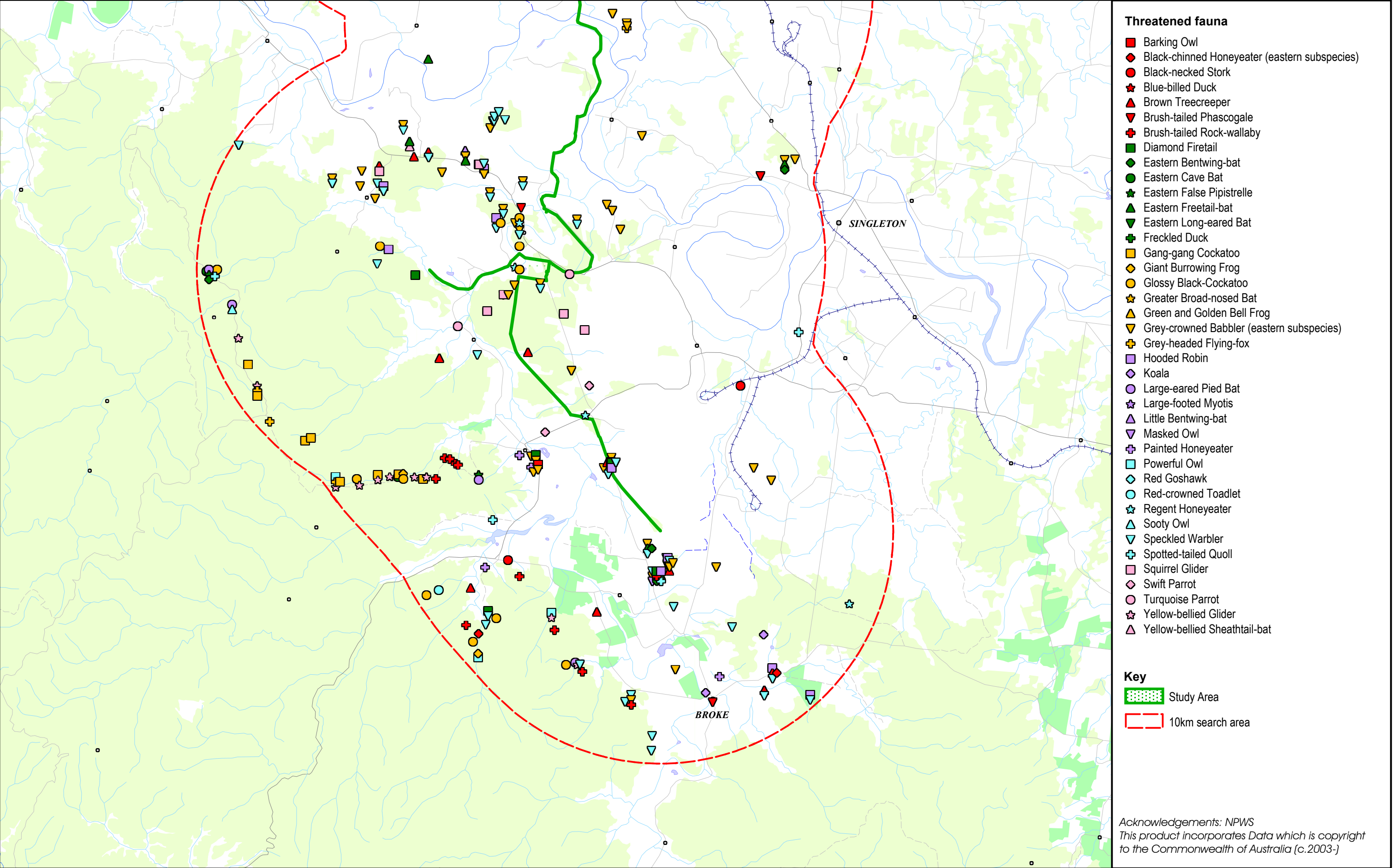
Figure 5: Threatened flora, listed on the TSC Act, recorded within 10km of the Study Area.

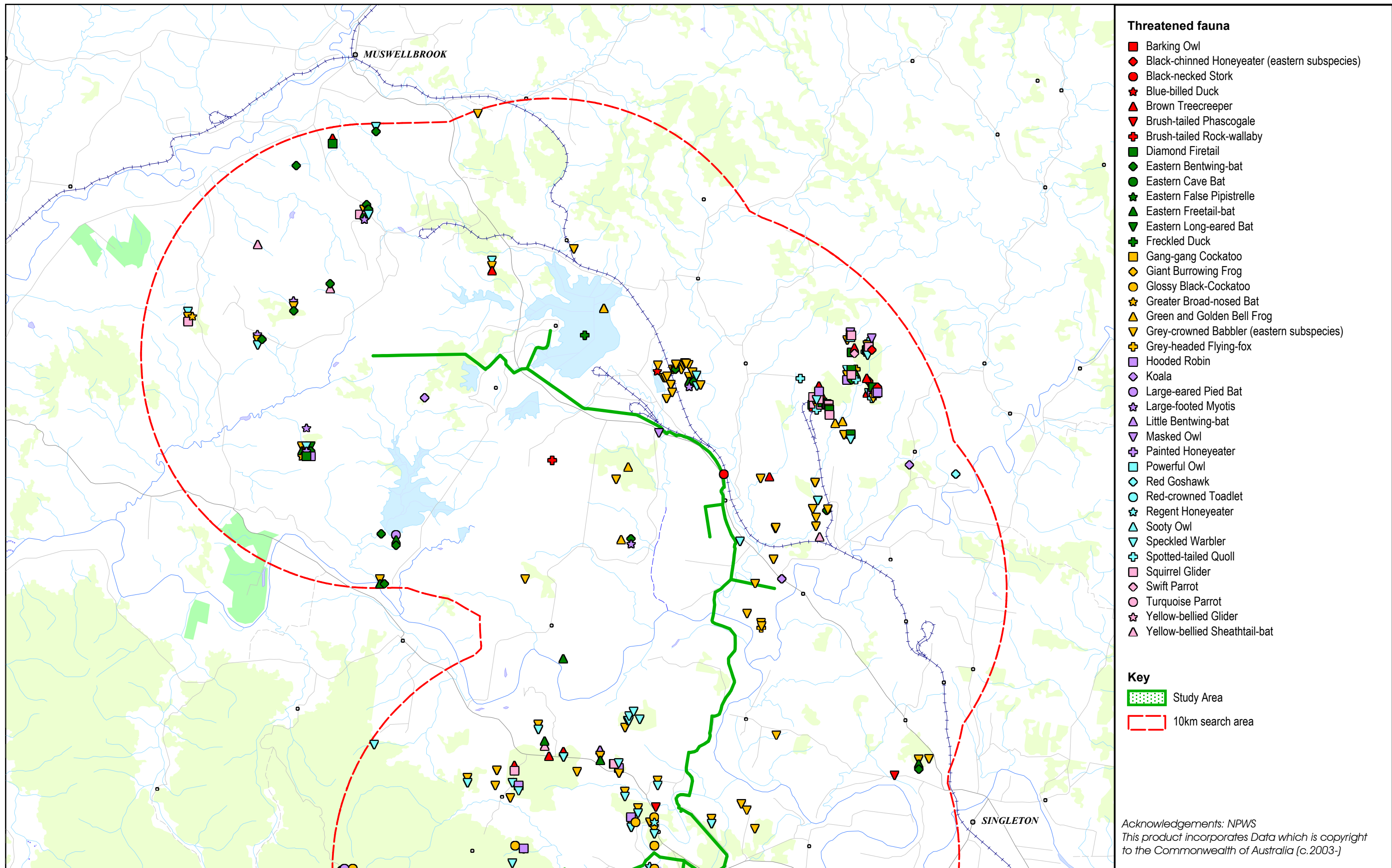
DATE: 9 August 2007
Checked by: TE File number: S4757
Location:~...4000\4700s\4757\Mapping\S4757 F5_flora.WOR

Scale: 0 2 4 6 8 10
kilometres



BIOSIS RESEARCH Pty. Ltd.
15 - 17 Henrietta Street
Chippendale
NEW SOUTH WALES 2008





BIOSIS RESEARCH Pty Ltd
15 - 17 Henrietta Street
Chippendale
NEW SOUTH WALES 2008

Figure 6b: Threatened fauna, listed on the TSC Act, recorded within 10km of the Study Area.

DATE: 9 August 2007

Checked by: RH

File number: S4757

Location: .\4000\4700s\4757\Mapping\S4757 F6_fauna.wor

Scale:

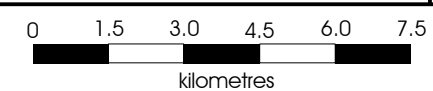


Figure 6b: Threatened fauna, listed on the TSC Act, recorded within 10km of the Study Area.



