

#### LEGEND

- SITE BOUNDARY
- INITIAL DEVELOPMENT STAGING AREA
- 10m BOUNDARY BUFFER
- SEPP 14 WETLAND
- 100m SEPP 26 BUFFER
- RETIREMENT COMMUNITY
- FUTURE RESIDENTIAL
- CONSERVATION / PARK / OPEN SPACE
- NEIGHBOURHOOD CENTRE
- RESIDENTIAL
- DRAINAGE RESERVE
- COMMUNITY USE

#### SOURCE:

Plans prepared by geolink - Pacific Pines Estate - Lennox Head 1675 - 1025 Illustration P1 Stage 1 project Application Plan Date October 2012.

#### NOTE:

This preliminary layout has been completed in accordance with the instructions provided by Epiq Lennox Head. In this respect preliminary desktop data has been used to form this layout. The final layout is subject to the completion of a detailed survey & engineering plans. Accordingly, the conclusions reached within this report may be modified by the author upon the completion of the final design plans & site inspection. Newton Denny Chapelle accepts no responsibility for any loss or damage suffered, however so arising, to any person or corporation who may use or rely on this report.

0 50 100 150 200 250  
1cm = 50m  
1:5000

REV	DATE	AMENDMENT
A		
B		
C		
D		
E		

SOURCE PLAN: [www.maps.six.nsw.gov.au](http://www.maps.six.nsw.gov.au) - accessed 14.11.16

k:\jobs\2014\14351 - clarence property\masterfile\planning\planning plans\ndc plans\cod files\geo link update\geo link plan set.dwg - p1

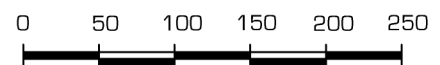
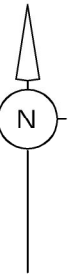
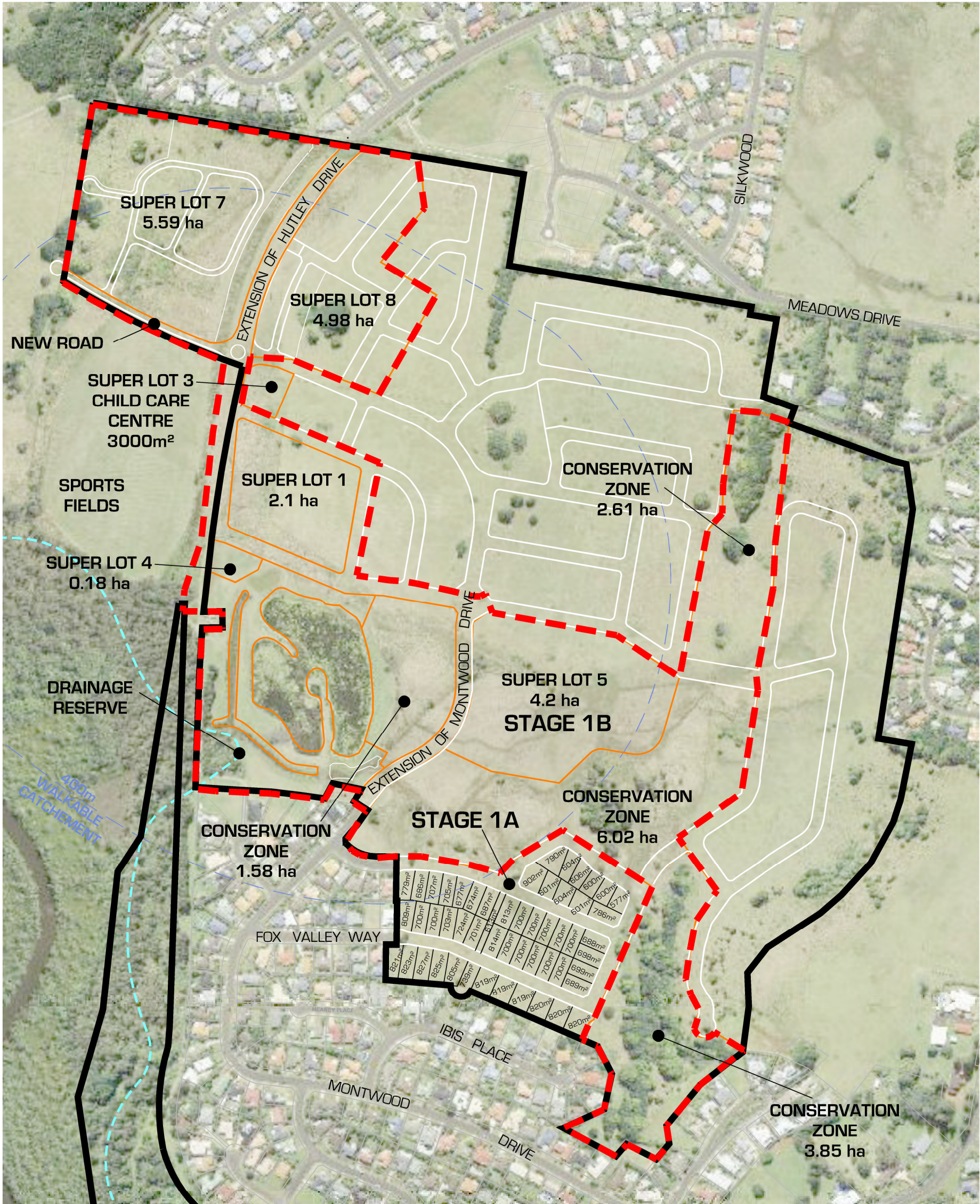
**NDS**  
**Newton Denny Chapelle**  
Surveyors Planners Engineers  
Email: [office@newtondennychapelle.com.au](mailto:office@newtondennychapelle.com.au)  
LISMORE 31 Carrington St. Lismore 2480 PH: 6622 1011  
CASINO 100 Barker St. Casino 2470 PH: 6662 5000  
ABN: 86 220 045 469

#### EPIQ LENNOX HEAD ILLUSTRATION P1 - STAGE 1 PROJECT APPLICATION PLAN

CLIENT: CLARENCE PROPERTY CORPORATION  
LOCATION: LOT 234 DP1104071  
LENNOX HEAD NSW

DATE: 16.11.16  
SCALE: 1 : 4000 @ A3  
REF: 14/351  
DRAWN: bk





1cm = 50m  
1:5000

**SOURCE:**  
Plans prepared by geolink - Pacific Pines Estate - Lennox Head 1675 - 1034  
Illustration P2 - Illustration p2 - stage 1 subdivision plan Date: September 2012

**NOTE:**  
This preliminary layout has been completed in accordance with the instructions provided by Epiq Lennox Head. In this respect preliminary desktop data has been used to form this layout. The final layout is subject to the completion of a detailed survey & engineering plans. Accordingly, the conclusions reached within this report may be modified by the author upon the completion of the final design plans & site inspection. Newton Denny Chapelle accepts no responsibility for any loss or damage suffered, however so arising, to any person or corporation who may use or rely on this report.

#### LEGEND

- SITE BOUNDARY**
- STAGE BOUNDARY**
- SUPERLOT BOUNDARY**

REV	DATE	AMENDMENT
A		
B		
C		
D		
E		

SOURCE PLAN: [www.maps.six.nsw.gov.au](http://www.maps.six.nsw.gov.au) - accessed 14.11.16

k:\jobs\2014\14351 - clarence property\masterfile\planning\planning plans\ndc plans\cad files\geo link update\cad files\geo link plan set.dwg - p2

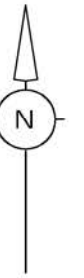
**NDC**  
**Newton Denny Chapelle**  
Surveyors Planners Engineers  
Email: [office@newtondennychapelle.com.au](mailto:office@newtondennychapelle.com.au)  
LISMORE 31 Carrington St. Lismore 2480 PH: 6622 1011  
CASINO 100 Barker St. Casino 2470 PH: 6662 5000  
ABN: 86 220 045 459

#### EPIQ LENNOX HEAD ILLUSTRATION P2 - STAGE 1 SUBDIVISION PLAN

CLIENT: CLARENCE PROPERTY CORPORATION  
LOCATION: LOT 234 DP1104071  
LENNOX HEAD NSW

DATE: 16.11.16  
SCALE: 1 : 4000 @ A3  
REF: 14/351  
DRAWN: bk





### LEGEND



EXISTING VEGETATION TO BE RETAINED



NEW NATIVE PLANTINGS



MAJOR STREET TREE / AVENUE PLANTING



DRAINAGE PONDS AND CREEKS



PEDESTRIAN / CYCLE PATHS



SITE BOUNDARY

BOUNDARY

BOUNDARY STAGE 1A

BOUNDARY STAGE 1B



BINS



FOUNTAINS



BENCHES



BIKE RACKS

### NOTE:

This preliminary layout has been completed in accordance with the instructions provided by Epiq Lennox Head. In this respect preliminary desktop data has been used to form this layout. The final layout is subject to the completion of a detailed survey & engineering plans. Accordingly, the conclusions reached within this report may be modified by the author upon the completion of the final design plans & site inspection. Newton Denny Chapelle accepts no responsibility for any loss or damage suffered, however so arising, to any person or corporation who may use or rely on this report.

REV	DATE	AMENDMENT
A		
B		
C		
D		
E		

**SOURCE:**  
Plans prepared by geolink - Pacific Pines Estate - Lennox Head  
Illustration C2 - green network plan Date: 17 July 2012

SOURCE PLAN: [www.maps.six.nsw.gov.au](http://www.maps.six.nsw.gov.au) - accessed 14.11.16

K:\jobs\2014\14351 - clarence property - masterfile - planning - planning plans - ndc plans - cad files - geo link update - geo link plan set.dwg - p3

**NDC**  
**Newton Denny Chapelle**  
Surveyors Planners Engineers  
Email: [office@newtondennychapelle.com.au](mailto:office@newtondennychapelle.com.au)  
LISMORE 31 Carrington St. Lismore 2480 PH: 6622 1011  
CASINO 100 Barker St. Casino 2470 PH: 6662 5000  
ABN: 86 220 045 469

**EPIQ LENNOX HEAD**  
**ILLUSTRATION P3**  
**STAGE 1 LANDSCAPE PLAN**

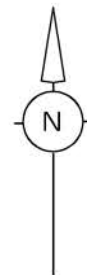
CLIENT: CLARENCE PROPERTY CORPORATION  
LOCATION: LOT 234 DP1104071  
LENNOX HEAD NSW

DATE: 16.11.16 REF: 14/351  
SCALE: 1 : 4000 @ A3 DRAWN: bk



WATER SENSITIVE URBAN DESIGN (WSUD) SYSTEMS

- 1 = PRIMARY TREATMENT - GROSS POLLUTANT TRAPS SILT SETTLEMENT.  
2 = SECONDARY TREATMENT - INFILTRATION & NUTRIENT STRIPPING VIA SWALES, BROOKS & PERMEABLE PAVEMENTS.  
3 = TERTIARY TREATMENT - SETTLEMENT & NUTRIENT PATHOGEN REMOVAL  
4 = ATTENUATION STORAGE



- LEGEND**
- SITE BOUNDARY
  - STAGE BOUNDARY
  - STORMWATER FLOW DIRECTION FOR MAJOR STORM EVENT
  - ONSITE DETENTION AND STORAGE BASIN
  - GROSS POLLUTANT AND SEDIMENT CONTROL BASIN
  - WATER QUALITY CONTROL POND
  - CATCHMENT BOUNDARY
  - CULVERTS
  - CATCHMENT '1'
  - CATCHMENT '2'
  - CATCHMENT '3'
  - SEPP 14 BOUNDARY
  - SEPP 14 - 50m BUFFER

**SOURCE:**  
Plans prepared by geolink - Pacific Pines Estate - Lennox Head 1675 - 1027  
Illustration C7 - Stormwater Concept Plan Dated: 28 June 2010.

**NOTE:**

This preliminary layout has been completed in accordance with the instructions provided by Epiq Lennox Head. In this respect preliminary desktop data has been used to form this layout. The final layout is subject to the completion of a detailed survey & engineering plans. Accordingly, the conclusions reached within this report may be modified by the author upon the completion of the final design plans & site inspection. Newton Denny Chapelle accepts no responsibility for any loss or damage suffered, however so arising, to any person or corporation who may use or rely on this report.

0 50 100 150 200 250  
1cm = 50m  
1:5000

REV	DATE	AMENDMENT
A		
B		
C		
D		
E		

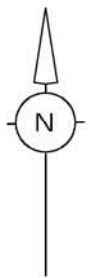
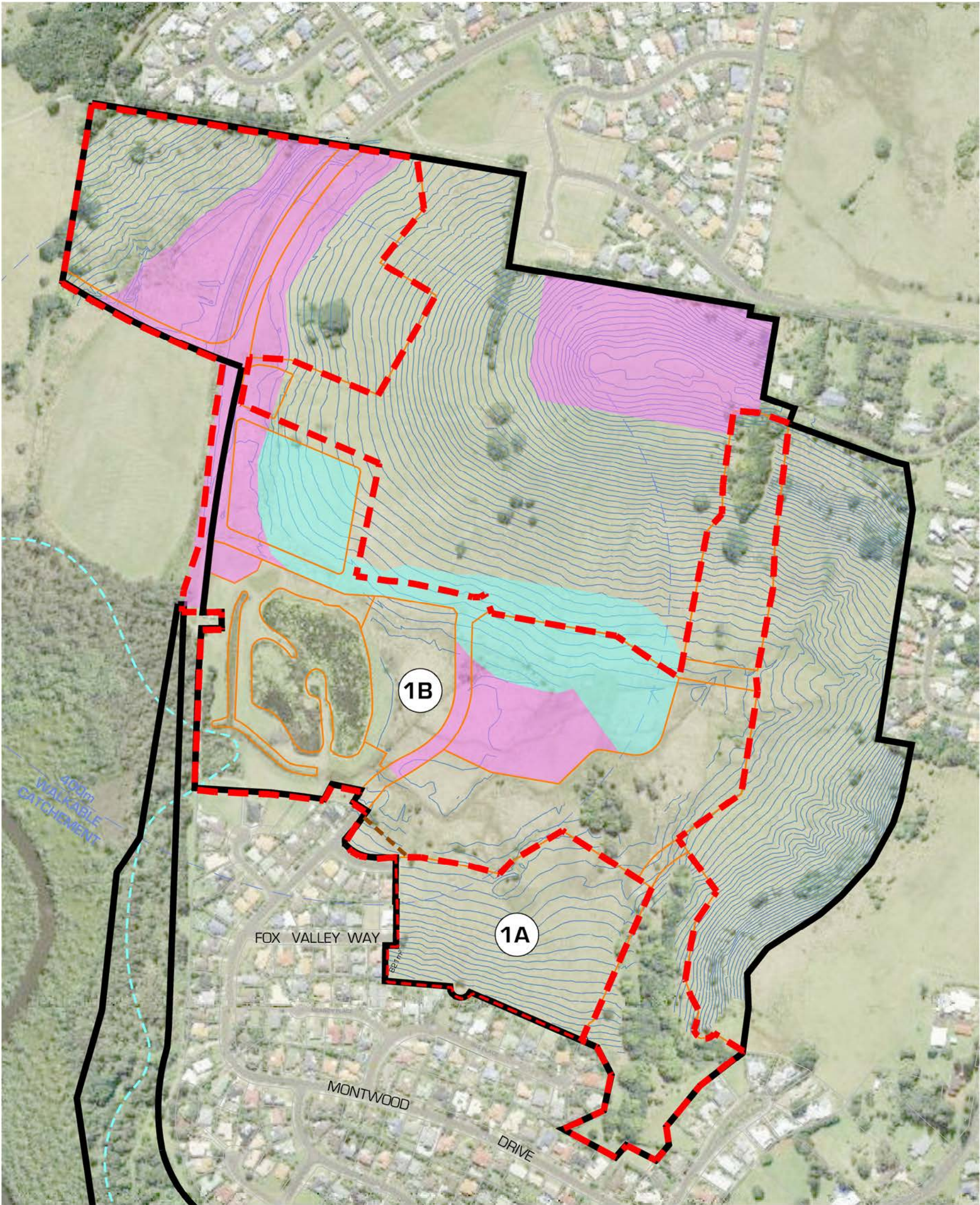
SOURCE PLAN: [www.maps.six.nsw.gov.au](http://www.maps.six.nsw.gov.au) - accessed 14.11.16

K:\jobs\2014\14351 - clarence property\masterfile\planning\planning plans\ndc plans\cod files\geo link update\geo link plan set.dwg - p4

**NDS**  
**Newton Denny Chapelle**  
Surveyors Planners Engineers  
Email: [office@newtondennychapelle.com.au](mailto:office@newtondennychapelle.com.au)  
LISMORE 31 Carrington St. Lismore 2480 PH: 6622 1011  
CASINO 100 Benker St. Casino 2470 PH: 6662 5000  
ABN: 86 220 045 469

**EPIQ LENNOX HEAD ILLUSTRATION**  
**P4 - STAGE 1 STORMWATER**  
**CONCEPT PLAN**  
CLIENT: CLARENCE PROPERTY CORPORATION  
LOCATION: LOT 234 DP1104071  
LENNOX HEAD NSW  
DATE: 16.11.16  
SCALE: 1 : 4000 @ A3  
REF: 14/351  
DRAWN: bk

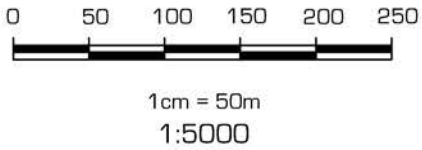




LEGEND	
	SITE BOUNDARY
	STAGE BOUNDARY
	SUPERLOT BOUNDARY
	PROPOSED SEWER
	PREVIOUSLY APPROVED
	ADDITIONAL REQUIRED

**SOURCE:**  
Plans prepared by geolink - Pacific Pines Estate - Lennox Head 1675 - 1034  
Illustration P5 - Illustration P5 Stage 1 Proposed Bulk Earthworks Date: August 2012

**NOTE:**  
This preliminary layout has been completed in accordance with the instructions provided by Epiq Lennox Head.  
In this respect preliminary desktop data has been used to form this layout. The final layout is subject to the completion of a detailed survey & engineering plans. Accordingly, the conclusions reached within this report may be modified by the author upon the completion of the final design plans & site inspection. Newton Denny Chapelle accepts no responsibility for any loss or damage suffered, however so arising, to any person or corporation who may use or rely on this report.



REV	DATE	AMENDMENT
A		
B		
C		
D		
E		

SOURCE PLAN: [www.maps.six.nsw.gov.au](http://www.maps.six.nsw.gov.au) - accessed 14.11.16  
k:\jobs\2014\14351 - clarence property\masterfile\planning\planning plans\ndc plans\cod files\geo link update\geo link plan set.dwg - p5

**NDC**  
**Newton Denny Chapelle**  
Surveyors Planners Engineers  
Email: [office@newtondennychapelle.com.au](mailto:office@newtondennychapelle.com.au)  
LISMORE 31 Carrington St. Lismore 2480 PH: 6622 1011  
CASINO 100 Barker St. Casino 2470 PH: 6662 5000  
ABN: 86 220 045 469

**EPIQ LENNOX HEAD**  
**ILLUSTRATION P5 - STAGE 1**  
**PROPOSED BULK EARTHWORKS**  
CLIENT: CLARENCE PROPERTY CORPORATION  
LOCATION: LOT 234 DP1104071  
LENNOX HEAD NSW  
DATE: 16.11.16  
SCALE: 1 : 4000 @ A3  
REF: 14/351  
DRAWN: bk