

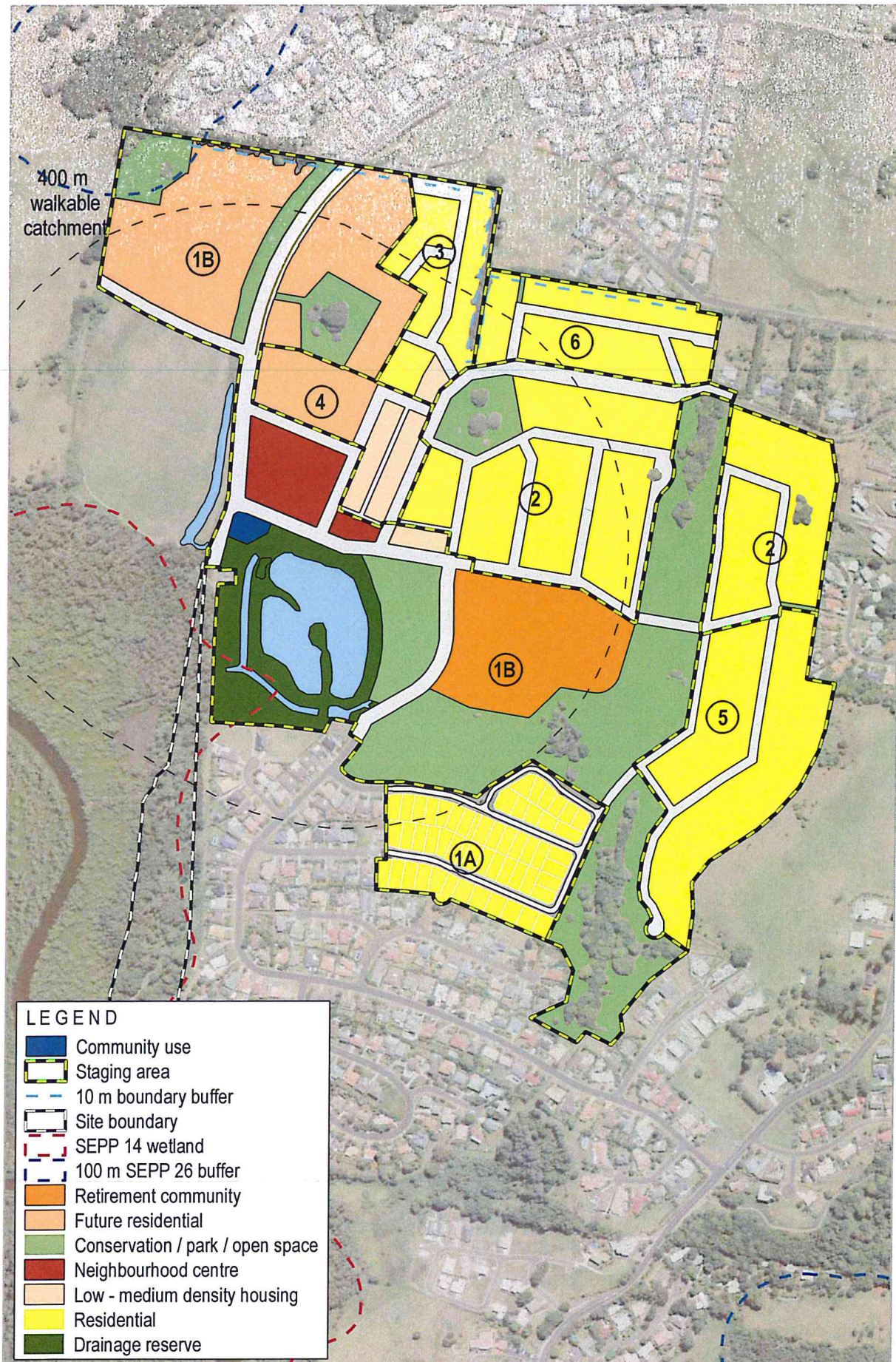
0 150

Illustration C1 - Concept Plan





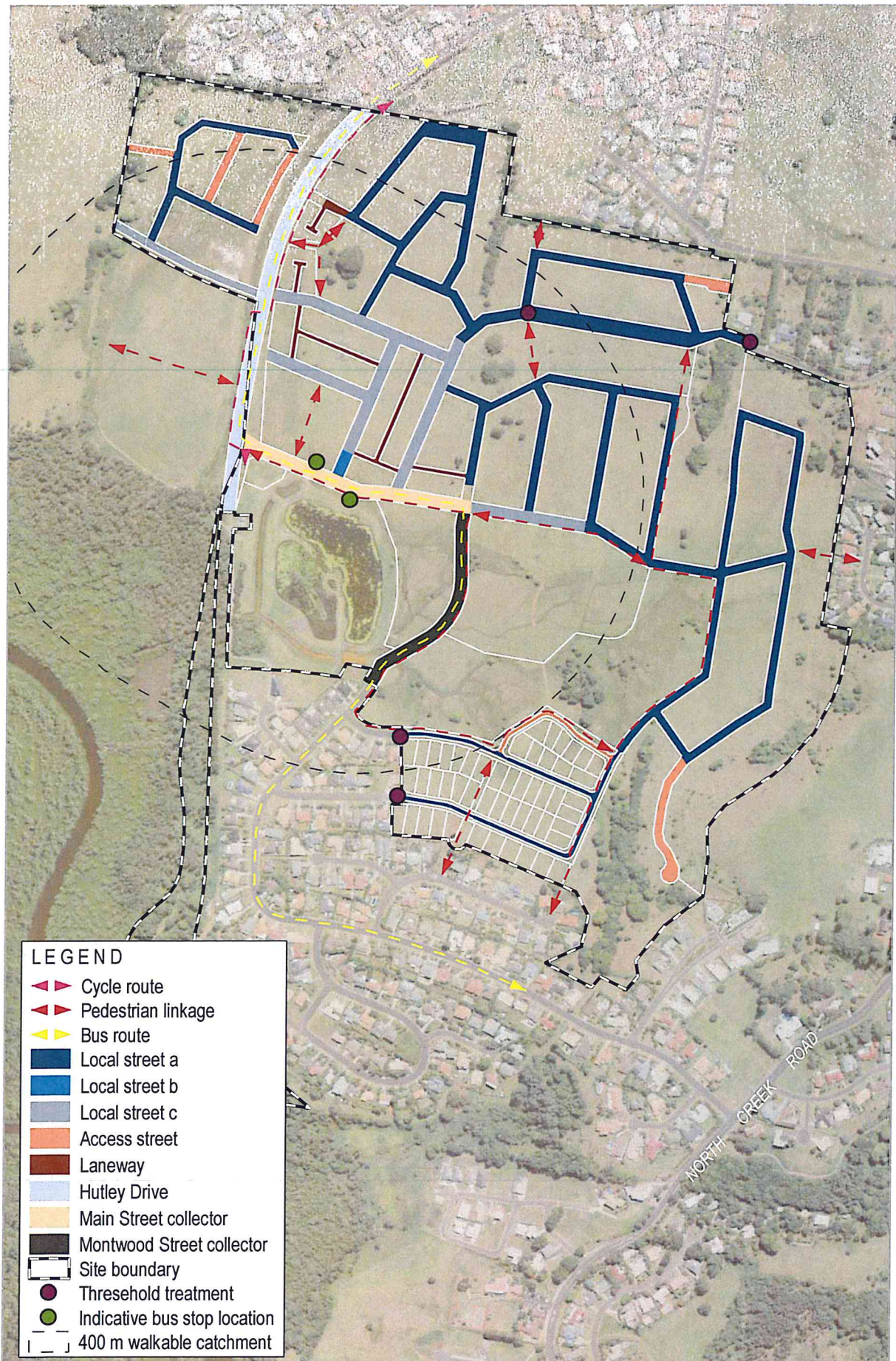
ILLUSTRATION C2 - GREEN NETWORK PLAN



0 140

Illustration C5 - Development Staging





0 150

Illustration C6 - Movement Network

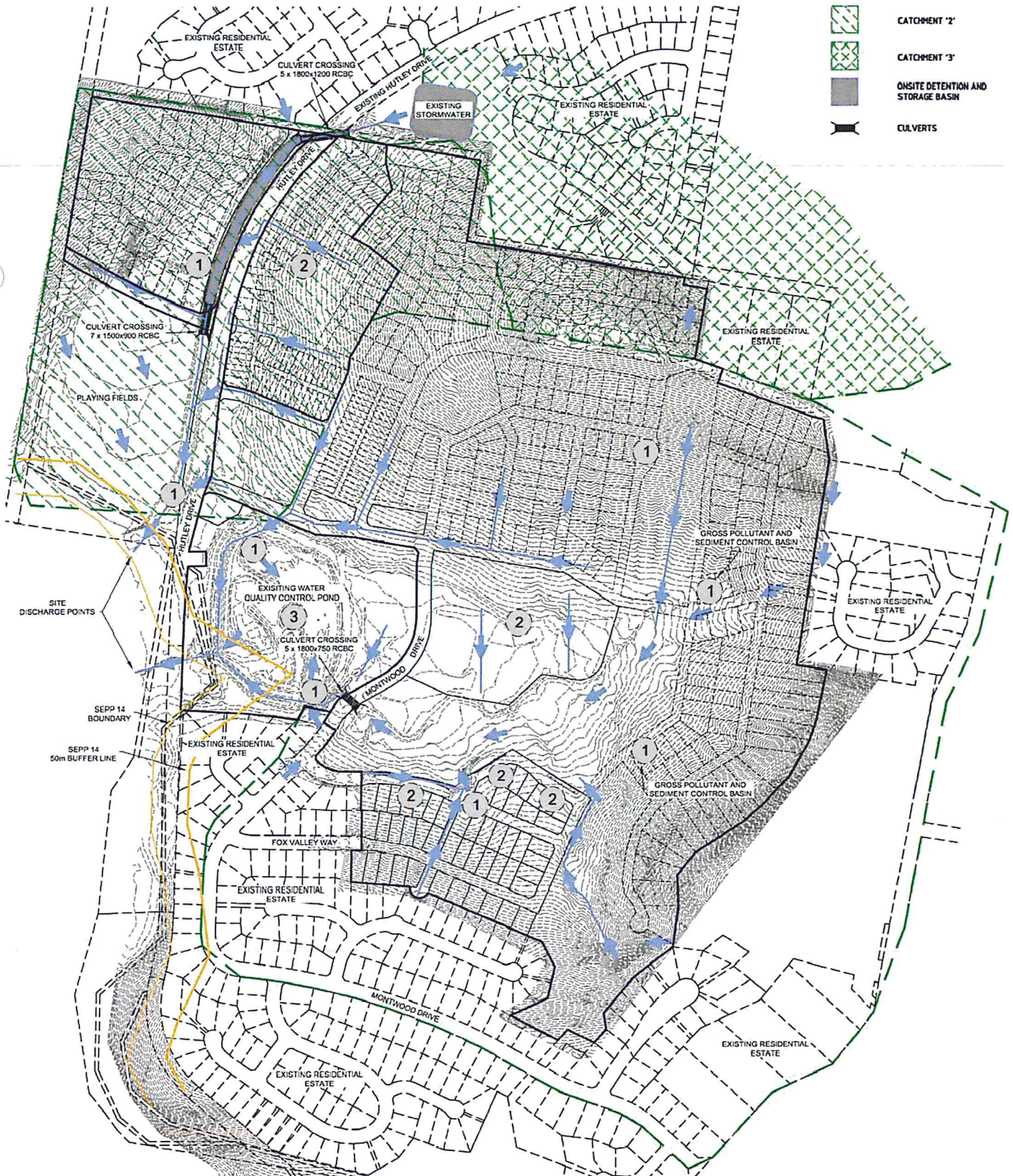


WATER SENSITIVE URBAN DESIGN (WSUD) SYSTEMS

- ① = PRIMARY TREATMENT - GROSS POLLUTANT TRAPS & SILT SETTLEMENT.
- ② = SECONDARY TREATMENT - INFILTRATION & NUTRIENT STRIPPING VIA SWALES, BUFFER & BIO RETENTION AREA.
- ③ = TERTIARY TREATMENT - SETTLEMENT & NUTRIENT REMOVAL.

LEGEND

- SITE BOUNDARY
- STORMWATER FLOW DIRECTION FOR MAJOR STORM EVENT
- CATCHMENT BOUNDARY
- SEPP 14 BOUNDARY
- SEPP 14 50m BUFFER LINE
- GROSS POLLUTANT AND SEDIMENT CONTROL BASIN
- CATCHMENT '1'
- CATCHMENT '2'
- CATCHMENT '3'
- ONSITE DETENTION AND STORAGE BASIN
- CULVERTS



0 150



0 150

GeoLINK
environmental management and design

Pacific Pines Estate - Lennox Head
1675-1029

Illustration C8 - Lot Typologies



Illustration C9 - Building Heights Plan



0 150

GeoLINK
environmental management and design

Pacific Pines Estate - Lennox Head
1675-1030



0 150



GeoLINK
environmental management and design

Pacific Pines Estate - Lennox Head
1675-1031

Illustration C10 - Setback Plan

